

**NEW MEXICO OIL CONSERVATION COMMISSION
WELL LOCATION AND ACERAGE DEDICATION PLAT**

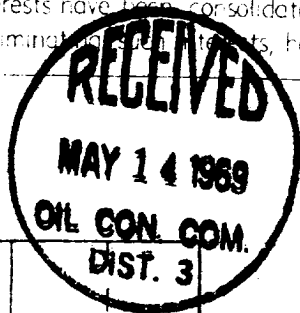
All distances must be from the outer boundaries of the Section

Operator COLONIAL PRODUCTION COMPANY Lease Jicarilla Well No 10
 Unit Letter C Section 15 Township 23 NORTH Range 4 WEST County RIO ARriba
 Actual Footage Location of Well: 690 feet from the NORTH line 1350 feet from the WEST line
 Ground Level Elev. 7282.0 Excluding Form No. Pictured Cliffs Ballard P. C. 160 Acres
 Dedicated Acreage

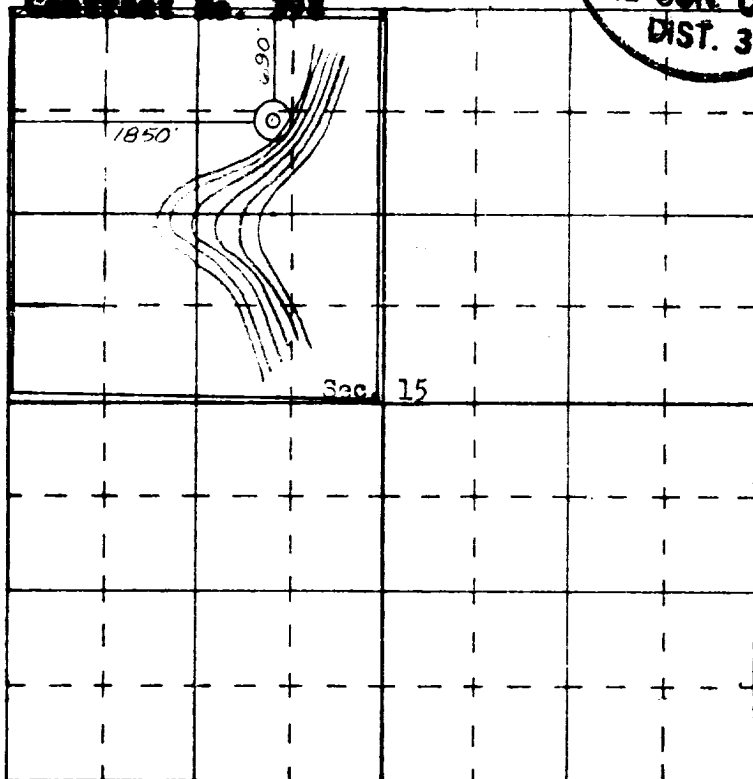
1. Outline the acreage dedicated to the subject well by colored pencil or hatchure marks on the plat below.
2. If more than one lease is dedicated to the well, outline each and identify the ownership thereof (both as to working interest and royalty).
3. If more than one lease of different ownership is dedicated to the well, have the interests of all owners been consolidated by communitization, unitization, force-pooling, etc?
☐ Yes ☐ No If answer is "yes," type of consolidation _____

If answer is "no," list the owners and tract descriptions which have actually consolidated (Use reverse side of this form if necessary) _____

No allowable will be assigned to the well until all interests have been consolidated (by communitization, unitization, forced-pooling, or otherwise) or until a non standard unit, eliminating such interests, has been approved by the Commission.



**Jicarilla Tribal
Contract No. 222**



CERTIFICATION

I hereby certify that the information contained herein is true and complete to the best of my knowledge and belief.

Dwight H. Walsh
Name

Dwight H. Walsh
Position

President
Company Walsh Engineering & Production Corporation
Dist.

May 13, 1969

I hereby certify that the well location shown on this plat was plotted from field notes of actual surveys made by me or under my supervision, and that the same is true and correct to the best of my knowledge and belief.

29 April, 1969
Date Surveyed

James F. Lease
Registered Professional Engineer
and/or Land Surveyor

JAMES F. LEASE

1463

Certificate No.

SCALE—4 INCHES EQUALS 1 MILE

SAN JUAN ENGINEERING COMPANY, FARMINGTON, N. M.

•

