

NEW MEXICO OIL CONSERVATION COMMISSION
Santa Fe, New Mexico

NOTICE OF INTENTION TO DRILL OR RECOMPLETE

Notice must be given to the District Office of the Oil Conservation Commission and approval obtained before drilling or recompletion begins. If changes in the proposed plan are considered advisable, a copy of this notice showing such changes will be returned to the sender. Submit this notice in QUINTUPLICATE. One copy will be returned following approval. See additional instructions in Rules and Regulations of the Commission.

Farmington, New Mexico
(Place)

August 5, 1953
(Date)

OIL CONSERVATION COMMISSION
SANTA FE, NEW MEXICO

Gentlemen:

You are hereby notified that it is our intention to commence the (Drilling) (Recompletion) of a well to be known as

El Paso Natural Gas Company
(Company or Operator)

Elliott State
(Lease)

1

NW

, Well No., in (Unit) The well is

located 1990 feet from the North line and 1930 feet from the

West line of Section 36, T. 19N, R. 2W, NMPM.

(GIVE LOCATION FROM SECTION LINE) Wildcat Pool, Sandoval County

If State Land the Oil and Gas Lease is No. E-63-56

If patented land the owner is

Address

We propose to drill well with drilling equipment as follows: Rotary tool to basement complex of T.D. of 7500'.

The status of plugging bond is Statewide

Drilling Contractor Company Tools

We intend to complete this well in the Any producible formation.

formation at an approximate depth of feet.

CASING PROGRAM

We propose to use the following strings of Casing and to cement them as indicated:

Size of Hole	Size of Casing	Weight per Foot	New or Second Hand	Depth	Sacks Cement
<u>17-3/4</u>	<u>13-3/8</u>	<u>54</u>	<u>New</u>	<u>200</u>	<u>Surface</u>
<u>8-3/4 *</u>	<u>7"</u>	<u>23</u>	<u>New</u>		<u>Prod.</u>

If changes in the above plans become advisable we will notify you immediately.

ADDITIONAL INFORMATION (If recompletion give full details of proposed plan of work.)

* In case of need of intermediate casing (9-5/8, 36#) hole will be reamed to 10-3/4".

It is intended to shoot the producing section with two quarts of S.N.G. per foot.

Approved August 10, 19 53
Except as follows:

Sincerely yours,

EL PASO NATURAL GAS COMPANY
(Company or Operator)

By

Position Petroleum Engineer

Send Communications regarding well to

Name E. J. Coel

Address Box 997 Farmington, New Mexico

OIL CONSERVATION COMMISSION

John J. Abendschan Original signed by

By John J. Abendschan
Oil and Gas Inspector Dist. #3

Title

OIL CONSERVATION COMMISSION		
AZTEC DISTRICT OFFICE		
No. Copies Received		
DISTRIBUTION		
	NO. FURNISHED	
Operator		
Santa Fe		
Exploration Office		
State Land Office		
U. S. G. S.		
Transporter		
File		

Locito
 Dakota
 Entrada
 Pennsylvania
 1850'
 2250'
 2625'
 6500'

Estimated depths of formations

It is planned to test and core any of the following formations that have likely shows:

COMPANY EL PASO NATURAL GAS COMPANY-J. GLENN TURNER

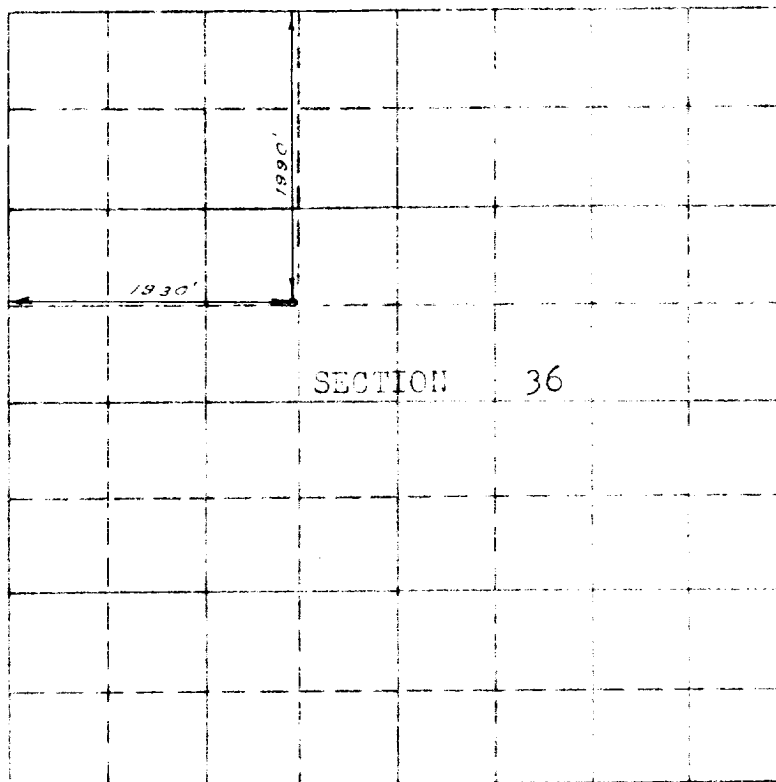
Well Name & No. Elliott-State # 1 Lease No. E 63-56

Location 1930 Feet from West Line 1990 Feet from North Line

Being in SE/4 of the NW/4

Sec. 36, T 19N., R 2W., N.M.P.M., SANDOVAL COUNTY, NEW MEXICO

Ground Elevation 6658.65



Scale -- 4 inches equals 1 mile

Surveyed July 31, 19 53

This is to certify that the above plat was prepared from field notes of actual surveys made by me or under my supervision and that the same are true and correct to the best of my knowledge and belief.

E. O. Walker
Registered Professional
Engineer and Land Surveyor.

Seal:

Farmington, New Mexico

OIL CONSERVATION COMMISSION		
AZTEC DISTRICT OFFICE		
No. Copies Received <i>7</i>		
DISTRIBUTION		
	NO. FURNISHED	
Operator	<i>2</i>	
Santa Fe	<i>1</i>	
Proration Office		
State Land Office	<i>1</i>	
U. S. G. S.	<i>2</i>	
Transporter		
File	<i>1</i>	<i>✓</i>