

UNITED STATES
DEPARTMENT OF THE INTERIOR
BUREAU OF LAND MANAGEMENT

APPLICATION FOR PERMIT TO DRILL, DEEPEN, OR PLUG BACK

1a. TYPE OF WORK

DRILL ☒

DEEPEN ☐

PLUG BACK ☐

b. TYPE OF WELL

OIL
WELL ☒

GAR
WELL ☐

OTHER

SINGLE
ZONE ☐

MULTIPLE
ZONE ☒

2. NAME OF OPERATOR

Amoco Production Company

3. ADDRESS OF OPERATOR

501 Airport Drive, Farmington, NM 87401

4. LOCATION OF WELL (Report location clearly and in accordance with any State requirements.)

At surface

810' FNL x 1650' FEL

At proposed prod. zone

Same

14. DISTANCE IN MILES AND DIRECTION FROM NEAREST TOWN OR POST OFFICE*

14 miles southeast of Farmington, NM

15. DISTANCE FROM PROPOSED*
LOCATION TO NEAREST
PROPERTY OR LEASE LINE, FT.
(Also to nearest drlg. unit line, if any)

810'

16. NO. OF ACRES IN LEASE

1440

18. DISTANCE FROM PROPOSED LOCATION*
TO NEAREST WELL, DRILLING, COMPLETED,
OR APPLIED FOR, ON THIS LEASE, FT.

2600' NE

19. PROPOSED DEPTH

6180'

21. ELEVATIONS (Show whether DF, RT, GR, etc.)

5609' GR

DRILLING OPERATIONS AUTHORIZED ARE
SUBJECT TO COMPLIANCE WITH ATTACHED

"GENERAL REQUIREMENTS"
PROPOSED CASING AND CEMENTING PROGRAM

17. NO. OF ACRES ASSIGNED
TO THIS WELL

N 320/80

20. ROTARY OR CABLE TOOLS

Rotary

22. APPROX. DATE WORK WILL START*

As soon as permitted

This action is subject to administrative
appeal pursuant to 30 CFR 290.

SIZE OF HOLE	SIZE OF CASING	WEIGHT PER FOOT	SETTING DEPTH	QUANTITY OF CEMENT
12-1/4"	9-5/8"	32, 3#, H-40	300'	354 c.f. Class B
8-3/4"	7"	20#, K-55	6180'	1398 c.f. Class B

Amoco proposes to drill the above well to further develop the Basin Dakota and Totah Gallup Extension. The well will be drilled to the surface casing point using native mud. The well will then be drilled to TD with a low solids nondispersed mud system. Completion design will be based on open hole logs. Copy of all logs will be filed upon completion. Amoco's standard blowout prevention will be employed; see attached drawing for blowout preventer design. Upon completion the well site will be cleaned and the reserve pit filled and leveled. The gas from this well is dedicated to El Paso Natural Gas under contract No. 56742.

IN ABOVE SPACE, DESCRIBE PROPOSED PROGRAM: If proposal is to deepen or plug back, give data on present productive zone and proposed new productive zone. If proposal is to drill or deepen directionally, give pertinent data on subsurface locations and measured and true vertical depths. Give blowout preventer program, if any.

24. Original Signed By
SIGNED B. D. Shaw TITLE Administrative Supervisor DATE 2/4/85

(This space for Federal or State office use)

PERMIT NO. _____ APPROVAL DATE _____

APPROVED BY _____ TITLE _____ DATE _____

CONDITIONS OF APPROVAL, IF ANY:

SEE ATTACHED FOR
CONDITIONS OF APPROVAL

NMOCC

*See Instructions On Reverse Side

Title 18 U.S.C. Section 1001, makes it a crime for any person knowingly and willfully to make to any department or agency of the United States any false, fictitious or fraudulent statements or representations as to any matter within its jurisdiction.

APPROVED
AS AMENDED

APR 11 1985

/s/ J. Stan McKee

M. MILLENBACH

AREA MANAGER

All distances must be from the outer boundaries of the Section.

Operator AMOCO PRODUCTION COMPANY			Lease GALLEGOS CANYON UNIT		Well No. 264E
Unit Letter B	Section 17	Township 28N	Range 12W	County San Juan	
Actual Footage Location of Well: 810 feet from the North line and 1650 feet from the East line					
Ground Level Elev: 5609	Producing Formation Dakota & Gallup		Pool Basin Dakota/Totah Gallup Ext.		Dedicated Acreage: 320/80 Acres

1. Outline the acreage dedicated to the subject well by colored pencil or hachure marks on the plat below.
2. If more than one lease is dedicated to the well, outline each and identify the ownership thereof (both as to working interest and royalty).
3. If more than one lease of different ownership is dedicated to the well, have the interests of all owners been consolidated by communitization, unitization, force-pooling, etc?

☒ Yes ☐ No If answer is "yes," type of consolidation Unitized

If answer is "no," list the owners and tract descriptions which have actually been consolidated. (Use reverse side of this form if necessary.)

No allowable will be assigned to the well until all interests have been consolidated (by communitization, unitization, forced-pooling, or otherwise) or until a non-standard unit, eliminating such interests, has been approved by the Commission.

Scale: 1"=1000'

<p align="center">CERTIFICATION</p> <p>I hereby certify that the information contained herein is true and complete to the best of my knowledge and belief.</p> <p align="center">Original Signed By B. D. Shaw</p>	
Name	B. D. Shaw
Position	Administrative Supervisor
Company	Amoco Production Company
Date	2/4/85
<p>I hereby certify that the well location shown on this plat was plotted from field notes of actual surveys made by me or under my supervision, and that the same is true and correct to the best of my knowledge and belief.</p>	
Date Surveyed	January 11, 1985
Registered Professional Engineer and Land Surveyor	<p>Fred B. Kerr Jr.</p>
Certificate No.	3950

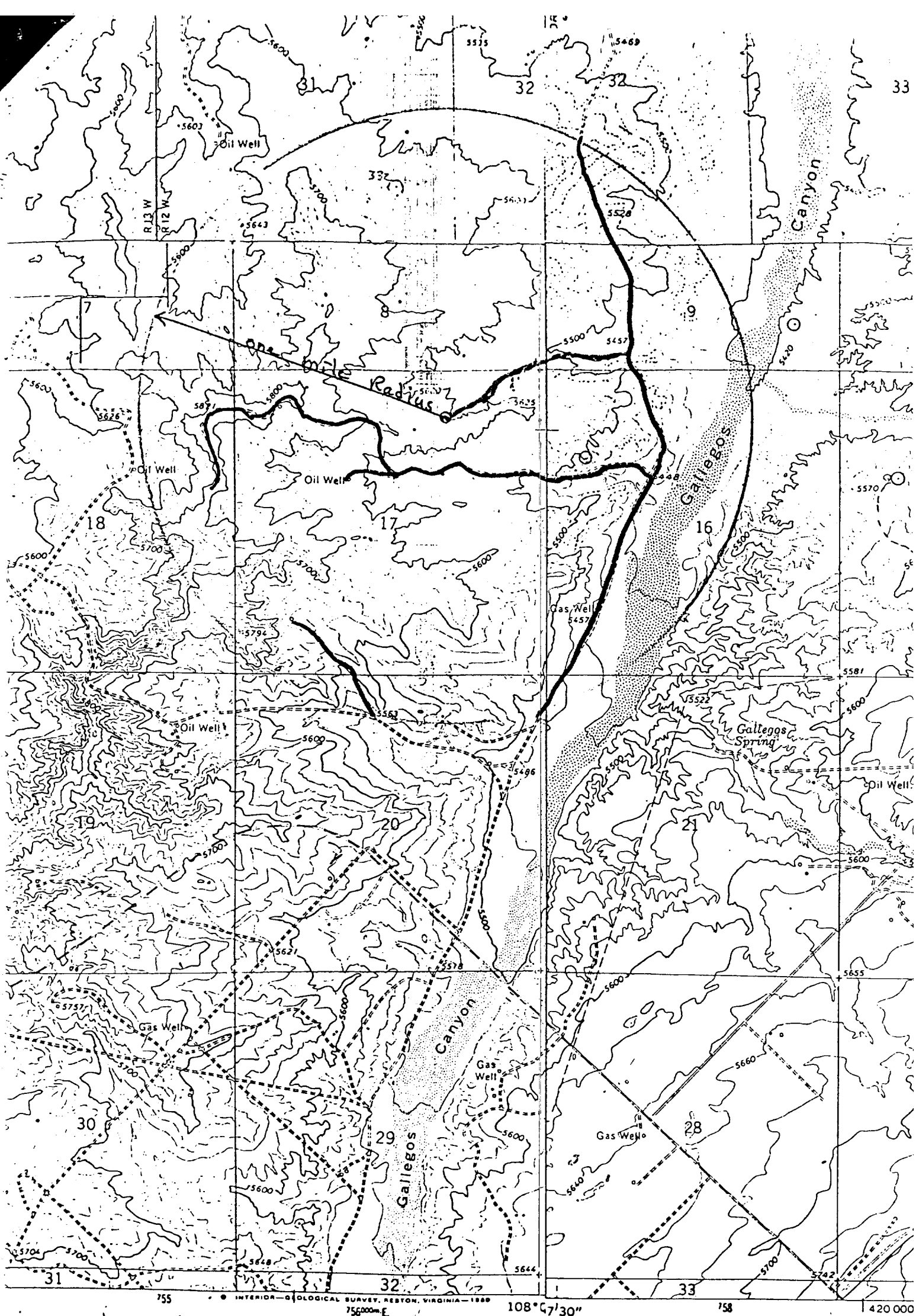


Exhibit B

ROAD CLASSIFICATION

Heavy-duty _____ Light-duty _____
Medium-duty _____ Unimproved dirt _____

Mapped, edited, and published by the Geological Survey
Control by USGS and NOS/NOAA, and U. S. Bureau of Reclamation

Topography by photogrammetric methods from aerial
photographs taken 1964 and by planimetric surveys of the
field checked by USGS 1965

North American datum
Mexico coordinate system,

see Material and notes,

Vicinity Map for
AMOCO PRODUCTION CO. #264E GALLEGOS CANYON UNIT
810'FNL 1650'FEL Sec. 17-T28N-R12W
SAN JUAN COUNTY, NEW MEXICO
FARMINGTON SOUTH, N. MEX.
N3637.5-W10807.5/7.5

Fine red dashed lines indicate selected fence lines
To place on the predicted North American Datum 1983

MEXICO

LE LOCATION