

UNITED STATES
DEPARTMENT OF THE INTERIOR
BUREAU OF LAND MANAGEMENT

SUBMIT IN TRIPLICATE*
(Other instructions on
reverse side)

Form approved,
Budget Bureau No. 1004-0136
Expires August 31, 1985

C14-BLM, Farmington
1004-26341

APPLICATION FOR PERMIT TO DRILL, DEEPEN, OR PLUG BACK

1a. TYPE OF WORK

DRILL ☒

DEEPEN ☐

PLUG BACK ☐

b. TYPE OF WELL

OIL
WELL ☒

GAS
WELL ☐

OTHER

SINGLE
ZONE ☐

MULTIPLE
ZONE ☒

2. NAME OF OPERATOR

Amoco Production Company

3. ADDRESS OF OPERATOR

501 Airport Drive, Farmington, New Mexico 87401

4. LOCATION OF WELL (Report location clearly and in accordance with any State requirements.)

At surface

850' FSL x 100' FWL

At proposed prod. zone

Same

14. DISTANCE IN MILES AND DIRECTION FROM NEAREST TOWN OR POST OFFICE*

9 miles south of Farmington, New Mexico

15. DISTANCE FROM PROPOSED*

LOCATION TO NEAREST
PROPERTY OR LEASE LINE, FT.
(Also to nearest drlg. unit line, if any)

100'

18. NO. OF ACRES IN LEASE

1760

16. DISTANCE FROM PROPOSED LOCATION*
TO NEAREST WELL, DRILLING COMPLETED,
OR APPLIED FOR, ON THIS LEASE, FT.

3300' E

19. PROPOSED DEPTH

6333'

17. NO. OF ACRES ASSIGNED
TO THIS WELL

366.46 ⁵/₈₀

20. ROTARY OR CABLE TOOLS

Rotary

21. ELEVATIONS (Show whether DF, RT, GR, etc.)

5683' GR

DRILLING OPERATIONS AUTHORIZED ARE

SUBJECT TO COMPLIANCE WITH ATTACHED

"GENERAL REQUIREMENTS" PROPOSED CASING AND CEMENTING PROGRAM

22. APPROX. DATE WORK WILL START*

As soon as permitted

23.

SIZE OF HOLE	SIZE OF CASING	WEIGHT PER FOOT	SETTING DEPTH	
12-1/4"	9-5/8"	32.3#, H-40	300'	234 cu. ft. Class B
8-3/4"	7"	20#, K-55	6333'	1,432 cu. ft. Class B

This action is subject to administrative
appeal pursuant to 30 CFR 290.

Amoco proposes to drill the above well to further develop the Basin Dakota and Pinon Gallup Extension reservoirs. The well will be drilled to the surface casing point using native mud. The well will then be drilled to TD with a low solids nondispersed mud system. Completion design will be based on open hole logs. Copy of all logs will be filed upon completion. Amoco's standard blowout prevention will be employed; see attached drawing for blowout preventer design. Upon completion the well site will be cleaned and the reserve pit filled and leveled. The gas from this well is dedicated to El Paso Natural Gas under contract No. 56,742.

Note: The on-site inspection was conducted under the well name
G.C.U. #266. We have since then changed the name to G.C.U. #206E.

IN ABOVE SPACE DESCRIBE PROPOSED PROGRAM: If proposal is to deepen or plug back, give data on present productive zone and proposed new productive zone. If proposal is to drill or deepen directionally, give pertinent data on subsurface locations and measured and true vertical depths. Give blowout preventer program, if any.

24.

SIGNED

[Signature]

District

Administrative Supervisor

DATE 1-11-85

(This space for Federal or State office use)

PERMIT NO.

APR 29 1985

APPROVAL DATE

APPROVED
AS AMENDED

APPROVED BY

CONDITIONS OF APPROVAL, IF ANY:

OIL CON. DIV.

DIST. 3

APR 25 1985

M. MILLENBACH
AREA MANAGER

*See Instructions On Reverse Side

OIL CONSERVATION DIVISION

STATE OF NEW MEXICO

P. O. BOX 2088

Form C-107
Revised 10-1-71

OIL AND MINERALS DEPARTMENT

SANTA FE, NEW MEXICO 87501

All distances must be from the outer boundaries of the Section.

Operator AMOCO PRODUCTION COMPANY			Lease GALLEGOS CANYO UNIT		Well No. 206E
Unit Letter M	Section 11	Township 28N	Range 12W	County San Juan	
Actual Footage Location of Well: 350 feet from the South line and 100 feet from the West line					
Ground Level Elev. 5683	Producing Formation Dakota		Pool Basin DK/Pinon GP Ext.		Dedicated Acreage: 320/80 Acres

1. Outline the acreage dedicated to the subject well by colored pencil or hachure marks on the plat below.
2. If more than one lease is dedicated to the well, outline each and identify the ownership thereof (both as to working interest and royalty).
3. If more than one lease of different ownership is dedicated to the well, have the interests of all owners been consolidated by communitization, unitization, force-pooling, etc?

☒ Yes ☐ No If answer is "yes," type of consolidation Unitized

If answer is "no," list the owners and tract descriptions which have actually been consolidated. (Use reverse side of this form if necessary.)

No allowable will be assigned to the well until all interests have been consolidated (by communitization, unitization, forced-pooling, or otherwise) or until a non-standard unit, eliminating such interests, has been approved by the Commission.

CERTIFICATION

I hereby certify that the information contained herein is true and complete to the best of my knowledge and belief.

B.D. Shaw
Name

B.D. Shaw

Position
Administrative Supervisor

Company
Amoco Production Co.

Date
11/15/84

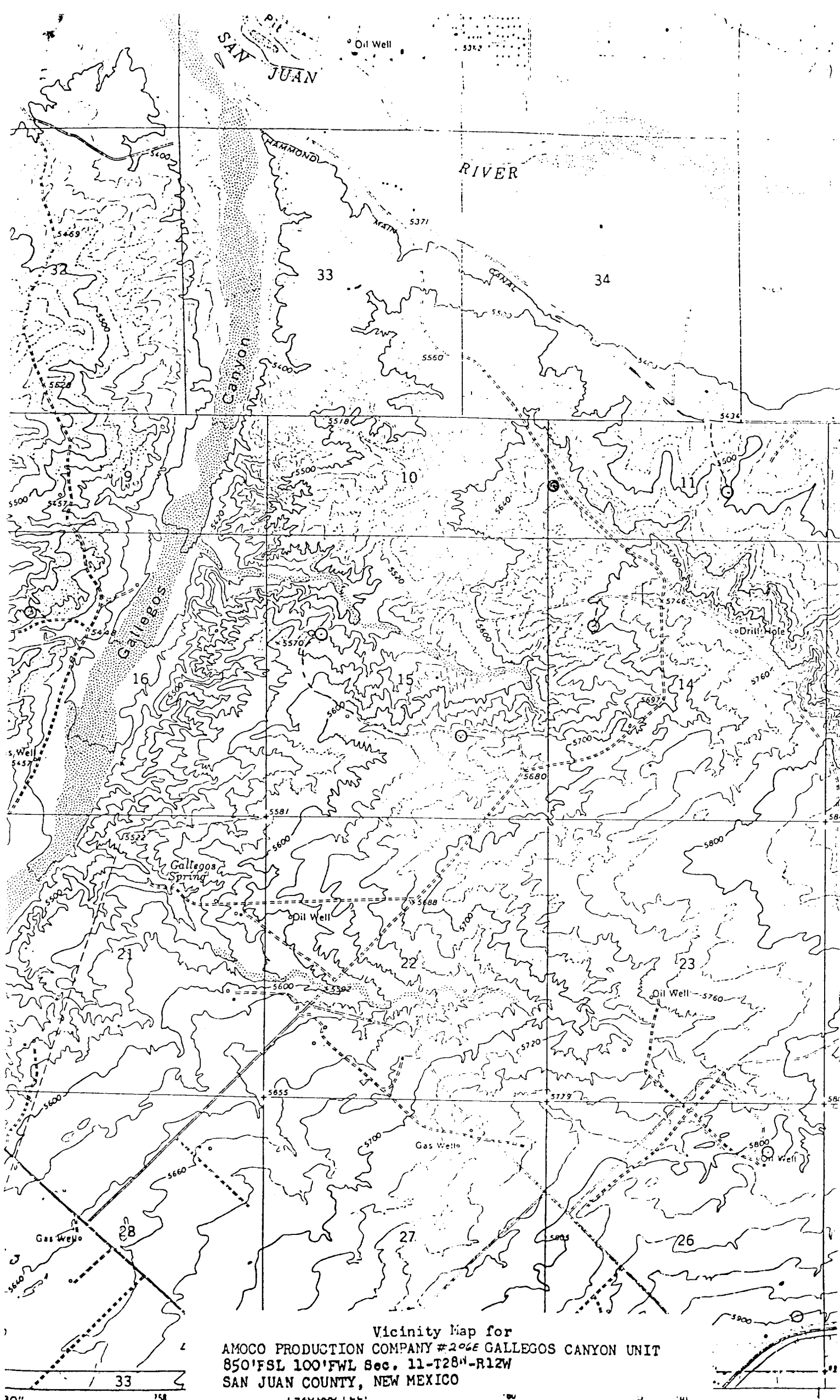
I hereby certify that the well location shown on this plat was plotted from field notes of actual surveys made by me or under my supervision, and that the same is true and correct to the best of my knowledge and belief.

Date Surveyed
October 13, 1984

Registered Professional Engineer
and Land Surveyor

Fred B. Kerr Jr.
Fred B. Kerr Jr.

850'	Sec.	11



Vicinity Map for
AMOCO PRODUCTION COMPANY #206E GALLEGOS CANYON UNIT
850'FSL 100'FWL Sec. 11-T28N-R12W
SAN JUAN COUNTY, NEW MEXICO