



February 7, 2017

#5B25501-BG4

NMOCD District I
Olivia Yu
1625 N. French Dr.
Hobbs, NM 88240

SUBJECT: FINAL CLOSURE REPORT FOR INCIDENT, BARR NONE FEDERAL #1
UNIT E SECTION 10-T22S-R32E NMPM, API# 30-025-32221, LEA COUNTY, NEW MEXICO

Dear Olivia Yu:

On behalf Judah Oil, LLC, Souder Miller & Associates (SMA) is pleased to submit Final Closure Report summarizing the remediation of the release site located at the Barr None Federal #1 in Lea County, New Mexico. The purpose of this Final Closure is to obtain closure from the New Mexico Oil Conservation Division (NMOCD) for the remediation of the release that occurred on Bureau of Land Management land.

SMA responded on December 3, 2016 at the request of Judah Oil, to assess and delineate the release of production fluids associated with the Barr None Federal #1 well location. The release was initially reported to NMOCD by Judah Oil. The table below summarizes information regarding the release. Results of the assessment and delineation are described in the following Soil Remediation Workplan.

Table 1: Release information and Site Ranking					
Name	Barr None Federal #1				
Location	Incident Number	API Number	Section, Township, Range		
	1RP-4574	30-025-32221	SW/NE (Unit)	Section 10	T22 S, R 32E NMPM
Estimated Date of Release	January 8, 2016				
Date Reported to NMOCD	January 23, 2017				
Reported by	James Campanella				
Land Owner	Bureau of Land Management				
Reported To	NM Oil Conservation Division (NMOCD)				
Source of Release	Flowline break				
Released Material	Produced Water and Crude Oil				
Released Volume	30 bbls Produced Water and 12 bbls Crude Oil				
Recovered Volume	0 bbls Produced Water and 0 bbls Crude Oil				

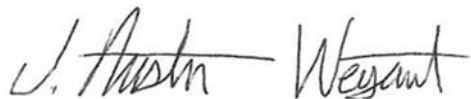


Net Release	30 bbls Produced Water and 12 bbls Crude Oil
Nearest Waterway	18.8 miles west of the location
Depth to Groundwater	Estimated to be 300 feet
Nearest Domestic Water Source	Greater than 1,000 feet
NMOCD Ranking	0
SMA Response Dates	Initial: Mitigation Activities:
Subcontractors	MMX
Disposal Facility	TBD
Estimated Yd ³ Contaminated Soil Excavated and Disposed	110

Attached is a copy of the C-141 initial located in Appendix B. For questions or comments pertaining to the release or the attached work plan please feel free to contact either of us.

Submitted by:

SOUDER, MILLER & ASSOCIATES



Austin Weyant
Project Scientist

Reviewed by:



Shawna Chubbuck
Senior Scientist

SOIL REMEDIATION FINAL CLOSURE REPORT FOR INCIDENT 1RP-TBD

JUDAH OIL, LLC

BARR NONE FEDERAL #1
UL E, SECTION 10, T22S R32E, NMPM
API #30-025-32221
LEA COUNTY, NM



Prepared for:
Judah Oil, LLC
611 West Mahone Drive # D
Artesia, NM 88210
Phone: (575) 746-1280

Prepared by:
Souder, Miller & Associates
201 S. Halagueno
Carlsbad, NM 88221
575-689-7040

February 7, 2017
SMA Reference
5B25501-BG4

Table of Contents

1.0	Introduction.....	3
2.0	Site Ranking and Land Jurisdiction	3
3.0	Assessment and Initial Results	3
4.0	Soil Remediation Summary	3
5.0	Conclusions and Recommendations.....	Error! Bookmark not defined.
6.0	Closure and Limitations.....	4

Figures:

Figure 1: Vicinity Map

Figure 2: Detailed Site and Sample Map

Tables:

Table 1: Release Information and Site Ranking

Table 2: Summary Chloride Field Screening Results

Table 3: Summary of Laboratory Analyses

Appendices:

Appendix A: Laboratory Analytical Reports

Appendix B: Form C141 Final

1.0 Introduction

On behalf of Judah Oil, LLC, Souder, Miller & Associates (SMA) has prepared this report that describes the assessment, initial delineation and remediation actions for a release associated with the Barr None Federal #1 location API# 30-025-32221. The site is located in Section 10, Township 22S, Range 32E NMPM, Lea County, New Mexico, on Bureau of Land Management property. Figure 1 illustrates the vicinity and location of the site.

2.0 Site Ranking and Land Jurisdiction

The release site is located approximately 11.5 miles east of Pecos River, with an elevation of approximately 3,805 feet above sea level. After evaluation of the site using aerial photography and topographic maps, depth to groundwater is estimated to be 350 feet below ground surface (bgs).

SMA searched the New Mexico State Engineer's Office online water well database for water wells in the vicinity of the release. Zero wells are located within a one-mile radius of the site. Figure 1 depicts the site vicinity and Figure 2 shows the site itself. The physical location of this release is within the jurisdiction of NMOCD.

Based on the NMOCD Guidelines Ranking Criteria, this release location has been assigned a NMOCD ranking of 0 which requires a soil remediation standard of 10 parts per million (ppm) benzene, 50 ppm combined benzene, toluene, ethyl-benzene, and total xylenes (BTEX), and 5000 ppm total petroleum hydrocarbons (TPH). Table 1 illustrates site ranking rationale.

3.0 Assessment and Initial Results

On November 9, 2016 after receiving 811 clearance, SMA field personnel assessed the release area with soil samples collected using a gas powered auger. Samples were screened for hydrocarbons using a calibrated Photo Ionization Detector (PID), and for chlorides using a mobile chlorides titration kit (EPA method 9045D) meter. Field screening results are included in Table 2. The potentially affected area was determined to be approximately 140 feet long and 20 feet wide. The site delineation samples were taken to depths of 1.5 feet bgs. In the north area of the spill over the old pit a plastic liner was found at 8 inches bgs. Samples indicate the impacted soil does not appear to extend past one foot bgs. Specific sample locations for all samples are depicted on Figure 2 (Sample Location Map). All samples were collected and processed according to NMOCD soil sampling procedures. The samples were sent under chain-of-custody protocols to Hall Environmental Analysis Laboratory for analyses of BTEX (EPA Method 8021B), TPH (EPA Method 8015) and/or total chlorides (EPA Method 300.0).

Soil contaminant concentrations found during the initial delineation are included in Table 3. Laboratory reports are included in Appendix A. Photo documentation is available by request.

4.0 Soil Remediation Summary

Judah and its subcontractors excavated the affected soils, with approval from area utilities owners via 811. SMA continuously guide the excavation activities by collecting composite soil samples for field screening with a mobile titration unit (NRCS1:1) and a calibrated PID. Excavation occur to depths to sufficient to delineate the plume, which was estimated to be 1 feet bgs. Excavation on

the pad was done to remove all the affected soils to 1 foot bgs. Excavation occurred in the north area over the old drill pit no more than 6" bgs to protect the underlying liner for the pit. Closure samples were collected at the final depth of excavation and sidewalls. Approximately 110 cubic yards of contaminated soil was removed and replaced with clean backfill material sufficient to return the contours to surface gradient. The contaminated soil was transported for proper disposal at an NMOCD permitted facility.

5.0 Conclusions and Recommendations

NMOCD Guidelines for Remediation of Leaks, Spills, and Releases have established the following action levels for contaminants of concern with a site ranking of 0: 10 ppm (mg/kg) Benzene, 50 ppm total BTEX, and 5000 ppm TPH.

Laboratory analytical results for the closure sample collected was below NMOCD closure standards for benzene, BTEX, and TPH. Chlorides ranged from below detection limits (30 mg/Kg) to 3,500 mg/Kg. No further remedial activities are recommended. Soil sample locations are illustrated in Figure 2. A summary of laboratory analytical results is included in Table 3. Laboratory reports are included in Appendix A.

6.0 Limitations

The scope of our services consisted of the performance of initial spill assessment sampling, verification of release stabilization, regulatory liaison, and preparation of this Closure Document. All work has been performed in accordance with generally accepted professional environmental consulting practices for oil and gas releases in the Permian Basin in New Mexico.

If there are any questions regarding this report, please contact either Austin Weyant at 575-689-7040 or Cindy Gray at 505-325-7535.

Submitted by:

Reviewed by:

SOUDER, MILLER & ASSOCIATES



Austin Weyant
Project Scientist



Shawna Chubbuck
Senior Scientist

Figures:

Figure 1: Vicinity Map

Figure 2: Detailed Site and Sample Map

Tables:

Table 1: Release Information and Site Ranking

Table 2: Summary of Chloride Field Screening Results

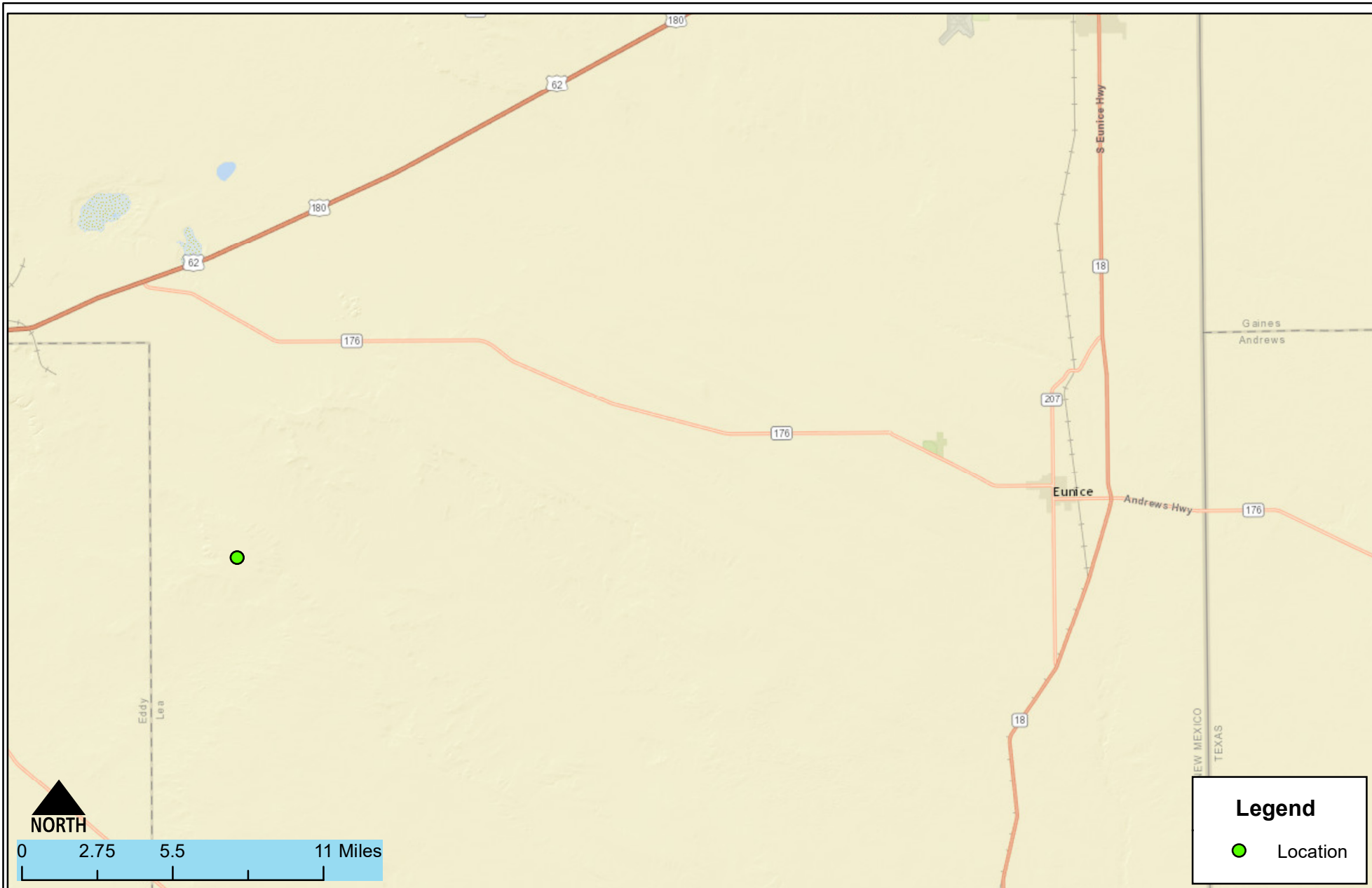
Table 3: Summary of Laboratory Analyses

Appendices:

Appendix A: Laboratory Analytical Reports

Appendix B: Form C141 Final

FIGURE 1 VICINITY MAP



Vicinity Map
Barr None Federal #1- Judah Oil
Eunice, New Mexico

Figure 1

Date Saved: 2/7/2017	By: _____	Date: _____	Revisions	Descr: _____
	By: _____	Date: _____		Descr: _____
Copyright 2015 Souder, Miller & Associates - All Rights Reserved				

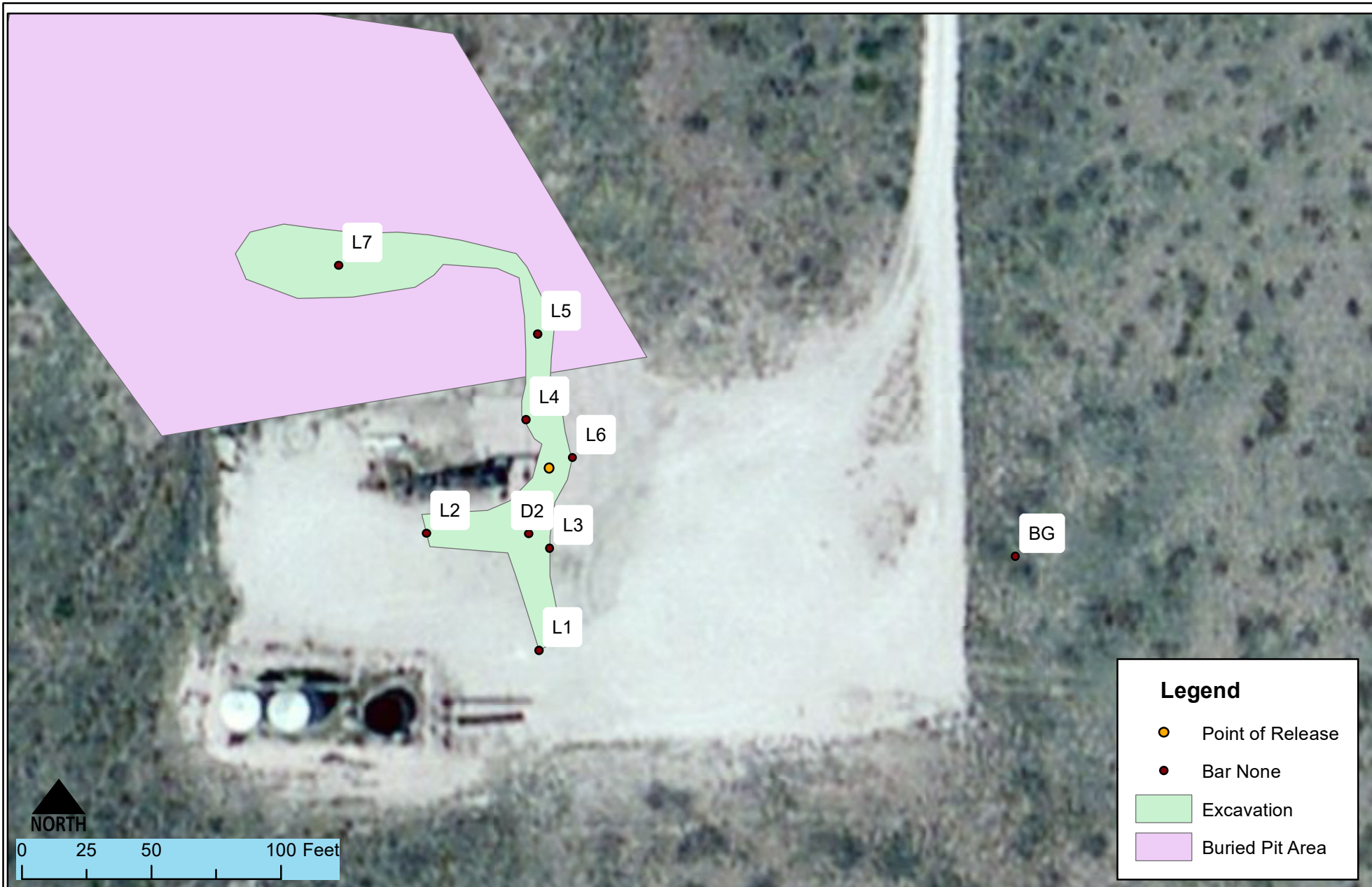
Drawn	Lucas Middleton
Checked	_____
Approved	_____



201 South Halaguena Street
Carlsbad, New Mexico 88221
(575) 689-7040
www.soudermiller.com
Serving the Southwest & Rocky Mountains

FIGURE 2

DETAILED SITE AND SAMPLE MAP



Detailed Site and Sample Map
Barr None Federal #1- Judah Oil
Loving, New Mexico

Figure 2

Date Saved:
2/7/2017

By: _____ Date: _____
By: _____ Date: _____
Copyright 2015 Souder, Miller & Associates - All Rights Reserved

Revisions
Descr: _____
Descr: _____
Drawn Lucas Middleton
Checked _____
Approved _____



201 South Halaguena Street
Carlsbad, New Mexico 88221
(575) 689-7040
www.soudermiller.com
Serving the Southwest & Rocky Mountains

TABLE 1

RELEASE INFORMATION AND SITE RANKING

Table 1: Release information and Site Ranking					
Name	Barr None Federal #1				
Location	Incident Number	API Number	Section, Township, Range		
	1RP-4574	30-025-32221	SW/NE (Unit)	Section 10	T22 S, R 32E NMPM
Estimated Date of Release	January 8, 2016				
Date Reported to NMOCD	January 23, 2017				
Reported by	James Campanella				
Land Owner	Bureau of Land Management				
Reported To	NM Oil Conservation Division (NMOCD)				
Source of Release	Flowline break				
Released Material	Produced Water and Crude Oil				
Released Volume	30 bbls Produced Water and 12 bbls Crude Oil				
Recovered Volume	0 bbls Produced Water and 0 bbls Crude Oil				
Net Release	30 bbls Produced Water and 12 bbls Crude Oil				
Nearest Waterway	18.8 miles west of the location				
Depth to Groundwater	Estimated to be 300 feet				
Nearest Domestic Water Source	Greater than 1,000 feet				
NMOCD Ranking	0				
SMA Response Dates	Initial: Mitigation Activities:				
Subcontractors	MMX				
Disposal Facility	TBD				
Estimated Yd ³ Contaminated Soil Excavated and Disposed	110				

TABLE 2

SUMMARY OF CHLORIDE FIELD SCREENING RESULTS

Table 2: Summary of Chloride Field Screening Results

Barr None Federal #1
Sample Event
12/13/2016

FIELD SCREENING RESULTS SUMMARY					
Date	Time	Field Screening Reference	Sample Depth (Feet BGS)	Chlorides Results	Lab Sample Collected Y/N
12/13/2016	10:00	L1	Surface	256	Y
12/13/2016	10:00	L2	Surface	244	Y
12/13/2016	10:00	L3	Surface	632	Y
12/13/2016	10:00	L5	Surface	575	Y
12/13/2016	10:00	L7	Surface	2870	Y
12/12/2016	10:00	D2-3	3 Feet	301	Y
12/12/2016	10:00	D2-2	2 Feet	313	Y
12/13/2016	10:00	L4	Surface	667	Y
12/13/2016	10:00	L6	Surface	530	Y



TABLE 3

SUMMARY OF LABORATORY ANALYSES

Table 3: Summary of Laboratory Analyses

Analytical Report- 1612A79	Sample Number on Figure 1 Map	Sample Date	Depth	BTEX ppm	Benzene mg/Kg	GRO mg/Kg	DRO mg/Kg	Cl- mg/Kg
1612B63-001	L1	12/13/2016	Surface	N/A	N/A	N/A	N/A	170
1612B63-002	L2	12/13/2016	Surface	N/A	N/A	N/A	N/A	210
1612B63-003	L3	12/13/2016	Surface	NA	N/A	N/A	N/A	290
1612B63-004	L5	12/13/2016	Surface	N/A	N/A	N/A	N/A	72
1612B63-005	L7	12/13/2016	Surface	N/A	N/A	N/A	N/A	4,500
1612B63-006	D2-3	12/13/2016	3 Feet	<0.055	<0.024	<4.9	<9.2	420
1612B63-007	D2-2	12/13/2016	2 Feet	N/A	N/A	N/A	N/A	230
1612B63-008	L4	12/13/2016	Surface	N/A	N/A	N/A	N/A	35
1612B63-009	L6	12/13/2016	Surface	N/A	N/A	N/A	N/A	600

APPENDIX A

LABORATORY ANALYTICAL REPORTS



Hall Environmental Analysis Laboratory
4901 Hawkins NE
Albuquerque, NM 87109
TEL: 505-345-3975 FAX: 505-345-4107
Website: www.hallenvironmental.com

January 06, 2017

Austin Weyant
Souder, Miller & Associates
201 S Halagueno
Carlsbad, NM 88221
TEL: (575) 689-7040
FAX

RE: Barr None

OrderNo.: 1612B53

Dear Austin Weyant:

Hall Environmental Analysis Laboratory received 9 sample(s) on 12/20/2016 for the analyses presented in the following report.

These were analyzed according to EPA procedures or equivalent. To access our accredited tests please go to www.hallenvironmental.com or the state specific web sites. In order to properly interpret your results it is imperative that you review this report in its entirety. See the sample checklist and/or the Chain of Custody for information regarding the sample receipt temperature and preservation. Data qualifiers or a narrative will be provided if the sample analysis or analytical quality control parameters require a flag. When necessary, data qualifiers are provided on both the sample analysis report and the QC summary report, both sections should be reviewed. All samples are reported, as received, unless otherwise indicated. Lab measurement of analytes considered field parameters that require analysis within 15 minutes of sampling such as pH and residual chlorine are qualified as being analyzed outside of the recommended holding time.

Please don't hesitate to contact HEAL for any additional information or clarifications.

ADHS Cert #AZ0682 -- NMED-DWB Cert #NM9425 -- NMED-Micro Cert #NM0190

Sincerely,

A handwritten signature in black ink, appearing to read 'Andy Freeman', is written over a horizontal line.

Andy Freeman
Laboratory Manager
4901 Hawkins NE
Albuquerque, NM 87109

Hall Environmental Analysis Laboratory, Inc.

Analytical Report

Lab Order **1612B53**

Date Reported: **1/6/2017**

CLIENT: Souder, Miller & Associates

Client Sample ID: L1

Project: Barr None

Collection Date: 12/13/2016 10:00:00 AM

Lab ID: 1612B53-001

Matrix: SOIL

Received Date: 12/20/2016 9:40:00 AM

Analyses	Result	PQL	Qual	Units	DF	Date Analyzed	Batch
EPA METHOD 300.0: ANIONS							Analyst: LGT
Chloride	170	30		mg/Kg	20	12/28/2016 4:11:45 PM	29432

Refer to the QC Summary report and sample login checklist for flagged QC data and preservation information.

Qualifiers:	*	Value exceeds Maximum Contaminant Level.	B	Analyte detected in the associated Method Blank
	D	Sample Diluted Due to Matrix	E	Value above quantitation range
	H	Holding times for preparation or analysis exceeded	J	Analyte detected below quantitation limits
	ND	Not Detected at the Reporting Limit	P	Sample pH Not In Range
	R	RPD outside accepted recovery limits	RL	Reporting Detection Limit
	S	% Recovery outside of range due to dilution or matrix	W	Sample container temperature is out of limit as specified

Hall Environmental Analysis Laboratory, Inc.

Analytical Report

Lab Order **1612B53**

Date Reported: **1/6/2017**

CLIENT: Souder, Miller & Associates

Client Sample ID: L2

Project: Barr None

Collection Date: 12/13/2016 10:00:00 AM

Lab ID: 1612B53-002

Matrix: SOIL

Received Date: 12/20/2016 9:40:00 AM

Analyses	Result	PQL	Qual	Units	DF	Date Analyzed	Batch
EPA METHOD 300.0: ANIONS							Analyst: LGT
Chloride	210	30		mg/Kg	20	12/28/2016 4:48:59 PM	29432

Refer to the QC Summary report and sample login checklist for flagged QC data and preservation information.

Qualifiers:	*	Value exceeds Maximum Contaminant Level.	B	Analyte detected in the associated Method Blank
	D	Sample Diluted Due to Matrix	E	Value above quantitation range
	H	Holding times for preparation or analysis exceeded	J	Analyte detected below quantitation limits
	ND	Not Detected at the Reporting Limit	P	Sample pH Not In Range
	R	RPD outside accepted recovery limits	RL	Reporting Detection Limit
	S	% Recovery outside of range due to dilution or matrix	W	Sample container temperature is out of limit as specified

Hall Environmental Analysis Laboratory, Inc.

Analytical Report

Lab Order **1612B53**

Date Reported: **1/6/2017**

CLIENT: Souder, Miller & Associates

Client Sample ID: L3

Project: Barr None

Collection Date: 12/13/2016 10:00:00 AM

Lab ID: 1612B53-003

Matrix: SOIL

Received Date: 12/20/2016 9:40:00 AM

Analyses	Result	PQL	Qual	Units	DF	Date Analyzed	Batch
EPA METHOD 300.0: ANIONS						Analyst: LGT	
Chloride	290	30		mg/Kg	20	12/28/2016 5:01:23 PM	29432

Refer to the QC Summary report and sample login checklist for flagged QC data and preservation information.

Qualifiers:	*	Value exceeds Maximum Contaminant Level.	B	Analyte detected in the associated Method Blank
	D	Sample Diluted Due to Matrix	E	Value above quantitation range
	H	Holding times for preparation or analysis exceeded	J	Analyte detected below quantitation limits
	ND	Not Detected at the Reporting Limit	P	Sample pH Not In Range
	R	RPD outside accepted recovery limits	RL	Reporting Detection Limit
	S	% Recovery outside of range due to dilution or matrix	W	Sample container temperature is out of limit as specified

Hall Environmental Analysis Laboratory, Inc.

Analytical Report

Lab Order **1612B53**

Date Reported: **1/6/2017**

CLIENT: Souder, Miller & Associates

Client Sample ID: L5

Project: Barr None

Collection Date: 12/13/2016 10:00:00 AM

Lab ID: 1612B53-004

Matrix: SOIL

Received Date: 12/20/2016 9:40:00 AM

Analyses	Result	PQL	Qual	Units	DF	Date Analyzed	Batch
EPA METHOD 300.0: ANIONS							Analyst: LGT
Chloride	72	30		mg/Kg	20	12/28/2016 5:13:48 PM	29432

Refer to the QC Summary report and sample login checklist for flagged QC data and preservation information.

Qualifiers:	*	Value exceeds Maximum Contaminant Level.	B	Analyte detected in the associated Method Blank
	D	Sample Diluted Due to Matrix	E	Value above quantitation range
	H	Holding times for preparation or analysis exceeded	J	Analyte detected below quantitation limits
	ND	Not Detected at the Reporting Limit	P	Sample pH Not In Range
	R	RPD outside accepted recovery limits	RL	Reporting Detection Limit
	S	% Recovery outside of range due to dilution or matrix	W	Sample container temperature is out of limit as specified

Hall Environmental Analysis Laboratory, Inc.

Analytical Report

Lab Order **1612B53**

Date Reported: **1/6/2017**

CLIENT: Souder, Miller & Associates

Client Sample ID: L7

Project: Barr None

Collection Date: 12/13/2016 10:00:00 AM

Lab ID: 1612B53-005

Matrix: SOIL

Received Date: 12/20/2016 9:40:00 AM

Analyses	Result	PQL	Qual	Units	DF	Date Analyzed	Batch
EPA METHOD 300.0: ANIONS							Analyst: MRA
Chloride	4500	150		mg/Kg	100	1/3/2017 1:32:17 PM	29432

Refer to the QC Summary report and sample login checklist for flagged QC data and preservation information.

Qualifiers:	*	Value exceeds Maximum Contaminant Level.	B	Analyte detected in the associated Method Blank
	D	Sample Diluted Due to Matrix	E	Value above quantitation range
	H	Holding times for preparation or analysis exceeded	J	Analyte detected below quantitation limits
	ND	Not Detected at the Reporting Limit	P	Sample pH Not In Range
	R	RPD outside accepted recovery limits	RL	Reporting Detection Limit
	S	% Recovery outside of range due to dilution or matrix	W	Sample container temperature is out of limit as specified

Hall Environmental Analysis Laboratory, Inc.

Analytical Report

Lab Order 1612B53

Date Reported: 1/6/2017

CLIENT: Souder, Miller & Associates

Client Sample ID: D2-3

Project: Barr None

Collection Date: 12/13/2016 10:00:00 AM

Lab ID: 1612B53-006

Matrix: SOIL

Received Date: 12/20/2016 9:40:00 AM

Analyses	Result	PQL	Qual	Units	DF	Date Analyzed	Batch
EPA METHOD 300.0: ANIONS							Analyst: LGT
Chloride	420	30		mg/Kg	20	12/28/2016 5:38:38 PM	29432
EPA METHOD 8015M/D: DIESEL RANGE ORGANICS							Analyst: TOM
Diesel Range Organics (DRO)	ND	9.2		mg/Kg	1	12/28/2016 1:01:51 PM	29384
Motor Oil Range Organics (MRO)	ND	46		mg/Kg	1	12/28/2016 1:01:51 PM	29384
Surr: DNOP	93.8	70-130		%Rec	1	12/28/2016 1:01:51 PM	29384
EPA METHOD 8015D: GASOLINE RANGE							Analyst: NSB
Gasoline Range Organics (GRO)	ND	4.9		mg/Kg	1	12/27/2016 10:25:59 AM	29391
Surr: BFB	96.3	68.3-144		%Rec	1	12/27/2016 10:25:59 AM	29391
EPA METHOD 8021B: VOLATILES							Analyst: NSB
Benzene	ND	0.024		mg/Kg	1	12/27/2016 10:25:59 AM	29391
Toluene	ND	0.049		mg/Kg	1	12/27/2016 10:25:59 AM	29391
Ethylbenzene	ND	0.049		mg/Kg	1	12/27/2016 10:25:59 AM	29391
Xylenes, Total	ND	0.098		mg/Kg	1	12/27/2016 10:25:59 AM	29391
Surr: 4-Bromofluorobenzene	110	80-120		%Rec	1	12/27/2016 10:25:59 AM	29391

Refer to the QC Summary report and sample login checklist for flagged QC data and preservation information.

Qualifiers:	*	Value exceeds Maximum Contaminant Level.	B	Analyte detected in the associated Method Blank
	D	Sample Diluted Due to Matrix	E	Value above quantitation range
	H	Holding times for preparation or analysis exceeded	J	Analyte detected below quantitation limits
	ND	Not Detected at the Reporting Limit	P	Sample pH Not In Range
	R	RPD outside accepted recovery limits	RL	Reporting Detection Limit
	S	% Recovery outside of range due to dilution or matrix	W	Sample container temperature is out of limit as specified

Hall Environmental Analysis Laboratory, Inc.

Analytical Report

Lab Order **1612B53**

Date Reported: **1/6/2017**

CLIENT: Souder, Miller & Associates

Client Sample ID: D2-2

Project: Barr None

Collection Date: 12/13/2016 10:00:00 AM

Lab ID: 1612B53-007

Matrix: SOIL

Received Date: 12/20/2016 9:40:00 AM

Analyses	Result	PQL	Qual	Units	DF	Date Analyzed	Batch
EPA METHOD 300.0: ANIONS							Analyst: LGT
Chloride	230	30		mg/Kg	20	12/28/2016 9:35:05 PM	29448

Refer to the QC Summary report and sample login checklist for flagged QC data and preservation information.

Qualifiers:	*	Value exceeds Maximum Contaminant Level.	B	Analyte detected in the associated Method Blank
	D	Sample Diluted Due to Matrix	E	Value above quantitation range
	H	Holding times for preparation or analysis exceeded	J	Analyte detected below quantitation limits
	ND	Not Detected at the Reporting Limit	P	Sample pH Not In Range
	R	RPD outside accepted recovery limits	RL	Reporting Detection Limit
	S	% Recovery outside of range due to dilution or matrix	W	Sample container temperature is out of limit as specified

Hall Environmental Analysis Laboratory, Inc.

Analytical Report

Lab Order **1612B53**

Date Reported: **1/6/2017**

CLIENT: Souder, Miller & Associates

Client Sample ID: L4

Project: Barr None

Collection Date: 12/13/2016 10:00:00 AM

Lab ID: 1612B53-008

Matrix: SOIL

Received Date: 12/20/2016 9:40:00 AM

Analyses	Result	PQL	Qual	Units	DF	Date Analyzed	Batch
EPA METHOD 300.0: ANIONS						Analyst: LGT	
Chloride	35	30		mg/Kg	20	12/28/2016 10:12:18 PM	29448

Refer to the QC Summary report and sample login checklist for flagged QC data and preservation information.

Qualifiers:	*	Value exceeds Maximum Contaminant Level.	B	Analyte detected in the associated Method Blank
	D	Sample Diluted Due to Matrix	E	Value above quantitation range
	H	Holding times for preparation or analysis exceeded	J	Analyte detected below quantitation limits
	ND	Not Detected at the Reporting Limit	P	Sample pH Not In Range
	R	RPD outside accepted recovery limits	RL	Reporting Detection Limit
	S	% Recovery outside of range due to dilution or matrix	W	Sample container temperature is out of limit as specified

Hall Environmental Analysis Laboratory, Inc.

Analytical Report

Lab Order **1612B53**

Date Reported: **1/6/2017**

CLIENT: Souder, Miller & Associates

Client Sample ID: L6

Project: Barr None

Collection Date: 12/13/2016 10:00:00 AM

Lab ID: 1612B53-009

Matrix: SOIL

Received Date: 12/20/2016 9:40:00 AM

Analyses	Result	PQL	Qual	Units	DF	Date Analyzed	Batch
EPA METHOD 300.0: ANIONS						Analyst: LGT	
Chloride	600	30		mg/Kg	20	12/28/2016 10:24:42 PM	29448

Refer to the QC Summary report and sample login checklist for flagged QC data and preservation information.

Qualifiers:	*	Value exceeds Maximum Contaminant Level.	B	Analyte detected in the associated Method Blank
	D	Sample Diluted Due to Matrix	E	Value above quantitation range
	H	Holding times for preparation or analysis exceeded	J	Analyte detected below quantitation limits
	ND	Not Detected at the Reporting Limit	P	Sample pH Not In Range
	R	RPD outside accepted recovery limits	RL	Reporting Detection Limit
	S	% Recovery outside of range due to dilution or matrix	W	Sample container temperature is out of limit as specified

QC SUMMARY REPORT

Hall Environmental Analysis Laboratory, Inc.

WO#: 1612B53

06-Jan-17

Client: Souder, Miller & Associates

Project: Barr None

Sample ID	MB-29448		SampType: MBLK		TestCode: EPA Method 300.0: Anions					
Client ID:	PBS		Batch ID: 29448		RunNo: 39709					
Prep Date:	12/28/2016		Analysis Date: 12/28/2016		SeqNo: 1244207		Units: mg/Kg			
Analyte	Result	PQL	SPK value	SPK Ref Val	%REC	LowLimit	HighLimit	%RPD	RPDLimit	Qual
Chloride	ND	1.5								

Sample ID	LCS-29448		SampType: LCS		TestCode: EPA Method 300.0: Anions					
Client ID:	LCSS		Batch ID: 29448		RunNo: 39709					
Prep Date:	12/28/2016		Analysis Date: 12/28/2016		SeqNo: 1244208		Units: mg/Kg			
Analyte	Result	PQL	SPK value	SPK Ref Val	%REC	LowLimit	HighLimit	%RPD	RPDLimit	Qual
Chloride	14	1.5	15.00	0	92.0	90	110			

Sample ID	MB-29432		SampType:	MBLK		TestCode:	EPA Method 300.0: Anions				
Client ID:	PBS		Batch ID:	29432		RunNo:	39711				
Prep Date:	12/28/2016		Analysis Date:	12/28/2016		SeqNo:	1244304		Units:	mg/Kg	
Analyte	Result	PQL	SPK value	SPK Ref Val	%REC	LowLimit	HighLimit	%RPD	RPDLimit	Qual	
Chloride	ND	1.5									

Sample ID	LCS-29432		SampType: LCS		TestCode: EPA Method 300.0: Anions					
Client ID:	LCSS		Batch ID: 29432		RunNo: 39711					
Prep Date:	12/28/2016		Analysis Date: 12/28/2016		SeqNo: 1244305		Units: mg/Kg			
Analyte	Result	PQL	SPK value	SPK Ref Val	%REC	LowLimit	HighLimit	%RPD	RPDLimit	Qual
Chloride	14	1.5	15.00	0	93.5	90	110			

Qualifiers:

* Value exceeds Maximum Contaminant Level.
D Sample Diluted Due to Matrix
H Holding times for preparation or analysis exceeded
ND Not Detected at the Reporting Limit
R RPD outside accepted recovery limits
S % Recovery outside of range due to dilution or matrix

B Analyte detected in the associated Method Blank
E Value above quantitation range
J Analyte detected below quantitation limits
P Sample pH Not In Range
RL Reporting Detection Limit
W Sample container temperature is out of limit as specified

QC SUMMARY REPORT

Hall Environmental Analysis Laboratory, Inc.

WO#: 1612B53

06-Jan-17

Client: Souder, Miller & Associates

Project: Barr None

Sample ID	LCS-29384		SampType: LCS		TestCode: EPA Method 8015M/D: Diesel Range Organics					
Client ID:	LCSS		Batch ID: 29384		RunNo: 39672					
Prep Date:	12/23/2016		Analysis Date: 12/28/2016		SeqNo: 1243438		Units: mg/Kg			
Analyte	Result	PQL	SPK value	SPK Ref Val	%REC	LowLimit	HighLimit	%RPD	RPDLimit	Qual
Diesel Range Organics (DRO)	45	10	50.00	0	89.2	63.8	116			
Surr: DNOP	4.1		5.000		82.6	70	130			

Sample ID	MB-29384		SampType:	MBLK		TestCode:	EPA Method 8015M/D: Diesel Range Organics				
Client ID:	PBS		Batch ID:	29384		RunNo:	39672				
Prep Date:	12/23/2016		Analysis Date:	12/28/2016		SeqNo:	1243440		Units: mg/Kg		
Analyte	Result	PQL	SPK value	SPK Ref Val	%REC	LowLimit	HighLimit	%RPD	RPDLimit	Qual	
Diesel Range Organics (DRO)	ND	10									
Motor Oil Range Organics (MRO)	ND	50									
Surr: DNOP	8.7		10.00		86.6	70	130				

Qualifiers:

* Value exceeds Maximum Contaminant Level.
D Sample Diluted Due to Matrix
H Holding times for preparation or analysis exceeded
ND Not Detected at the Reporting Limit
R RPD outside accepted recovery limits
S % Recovery outside of range due to dilution or matrix

B Analyte detected in the associated Method Blank
E Value above quantitation range
J Analyte detected below quantitation limits
P Sample pH Not In Range
RL Reporting Detection Limit
W Sample container temperature is out of limit as specified

QC SUMMARY REPORT

Hall Environmental Analysis Laboratory, Inc.

WO#: 1612B53

06-Jan-17

Client: Souder, Miller & Associates

Project: Barr None

Sample ID	MB-29391		SampType: MBLK		TestCode: EPA Method 8015D: Gasoline Range					
Client ID:	PBS		Batch ID: 29391		RunNo: 39665					
Prep Date:	12/23/2016		Analysis Date: 12/27/2016		SeqNo: 1242742		Units: mg/Kg			
Analyte	Result	PQL	SPK value	SPK Ref Val	%REC	LowLimit	HighLimit	%RPD	RPDLimit	Qual
Gasoline Range Organics (GRO)	ND	5.0								
Surr: BFB	950		1000		94.8	68.3	144			

Sample ID	LCS-29391		SampType: LCS		TestCode: EPA Method 8015D: Gasoline Range					
Client ID:	LCSS		Batch ID: 29391		RunNo: 39665					
Prep Date:	12/23/2016		Analysis Date: 12/27/2016		SeqNo: 1242743		Units: mg/Kg			
Analyte	Result	PQL	SPK value	SPK Ref Val	%REC	LowLimit	HighLimit	%RPD	RPDLimit	Qual
Gasoline Range Organics (GRO)	26	5.0	25.00	0	103	74.6	123			
Surr: BFB	1000		1000		99.6	68.3	144			

Qualifiers:

* Value exceeds Maximum Contaminant Level.
D Sample Diluted Due to Matrix
H Holding times for preparation or analysis exceeded
ND Not Detected at the Reporting Limit
R RPD outside accepted recovery limits
S % Recovery outside of range due to dilution or matrix

B Analyte detected in the associated Method Blank
E Value above quantitation range
J Analyte detected below quantitation limits
P Sample pH Not In Range
RL Reporting Detection Limit
W Sample container temperature is out of limit as specified

QC SUMMARY REPORT

Hall Environmental Analysis Laboratory, Inc.

WO#: 1612B53

06-Jan-17

Client: Souder, Miller & Associates

Project: Barr None

Sample ID MB-29391	SampType: MBLK		TestCode: EPA Method 8021B: Volatiles							
Client ID: PBS	Batch ID: 29391		RunNo: 39665							
Prep Date: 12/23/2016	Analysis Date: 12/27/2016		SeqNo: 1242788		Units: mg/Kg					
Analyte	Result	PQL	SPK value	SPK Ref Val	%REC	LowLimit	HighLimit	%RPD	RPDLimit	Qual
Benzene	ND	0.025								
Toluene	ND	0.050								
Ethylbenzene	ND	0.050								
Xylenes, Total	ND	0.10								
Surr: 4-Bromofluorobenzene	1.1		1.000		109	80	120			

Sample ID LCS-29391	SampType: LCS		TestCode: EPA Method 8021B: Volatiles							
Client ID: LCSS	Batch ID: 29391		RunNo: 39665							
Prep Date: 12/23/2016	Analysis Date: 12/27/2016		SeqNo: 1242789		Units: mg/Kg					
Analyte	Result	PQL	SPK value	SPK Ref Val	%REC	LowLimit	HighLimit	%RPD	RPDLimit	Qual
Benzene	1.0	0.025	1.000	0	103	75.2	115			
Toluene	0.96	0.050	1.000	0	96.4	80.7	112			
Ethylbenzene	0.94	0.050	1.000	0	93.6	78.9	117			
Xylenes, Total	2.8	0.10	3.000	0	94.4	79.2	115			
Surr: 4-Bromofluorobenzene	1.1		1.000		110	80	120			

Sample ID 1612B53-006AMS	SampType: MS		TestCode: EPA Method 8021B: Volatiles							
Client ID: D2-3	Batch ID: 29391		RunNo: 39665							
Prep Date: 12/23/2016	Analysis Date: 12/27/2016		SeqNo: 1242792		Units: mg/Kg					
Analyte	Result	PQL	SPK value	SPK Ref Val	%REC	LowLimit	HighLimit	%RPD	RPDLimit	Qual
Benzene	0.95	0.023	0.9183	0	104	61.5	138			
Toluene	0.88	0.046	0.9183	0	96.2	71.4	127			
Ethylbenzene	0.85	0.046	0.9183	0	92.0	70.9	132			
Xylenes, Total	2.5	0.092	2.755	0	92.1	76.2	123			
Surr: 4-Bromofluorobenzene	1.1		0.9183		115	80	120			

Sample ID 1612B53-006AMSD	SampType: MSD		TestCode: EPA Method 8021B: Volatiles							
Client ID: D2-3	Batch ID: 29391		RunNo: 39665							
Prep Date: 12/23/2016	Analysis Date: 12/27/2016		SeqNo: 1242793		Units: mg/Kg					
Analyte	Result	PQL	SPK value	SPK Ref Val	%REC	LowLimit	HighLimit	%RPD	RPDLimit	Qual
Benzene	0.85	0.023	0.9217	0	91.8	61.5	138	11.7	20	
Toluene	0.84	0.046	0.9217	0	90.8	71.4	127	5.43	20	
Ethylbenzene	0.83	0.046	0.9217	0	90.2	70.9	132	1.64	20	
Xylenes, Total	2.5	0.092	2.765	0	91.0	76.2	123	0.851	20	
Surr: 4-Bromofluorobenzene	1.1		0.9217		116	80	120	0	0	

Qualifiers:

- | | |
|---|---|
| * Value exceeds Maximum Contaminant Level. | B Analyte detected in the associated Method Blank |
| D Sample Diluted Due to Matrix | E Value above quantitation range |
| H Holding times for preparation or analysis exceeded | J Analyte detected below quantitation limits |
| ND Not Detected at the Reporting Limit | P Sample pH Not In Range |
| R RPD outside accepted recovery limits | RL Reporting Detection Limit |
| S % Recovery outside of range due to dilution or matrix | W Sample container temperature is out of limit as specified |



Hall Environmental Analysis Laboratory
4901 Hawkins NE
Albuquerque, NM 87109
TEL: 505-345-3975 FAX: 505-345-4107
Website: www.hallenvironmental.com

Sample Log-In Check List

Client Name: SMA-CARLSBAD

Work Order Number: 1612B53

RcptNo: 1

Received by/date: AJ 12/20/16

Logged By: Lindsey Concha 12/20/2016 9:40:00 AM

Completed By: Lindsey Concha 12/21/16

Reviewed By: AJ 12/22/16

Chain of Custody

1. Custody seals intact on sample bottles? Yes ☐ No ☐ Not Present ☒
2. Is Chain of Custody complete? Yes ☒ No ☐ Not Present ☐
3. How was the sample delivered? Courier

Log In

4. Was an attempt made to cool the samples? Yes ☒ No ☐ NA ☐
5. Were all samples received at a temperature of $>0^{\circ}\text{C}$ to 6.0°C ? Yes ☒ No ☐ NA ☐
6. Sample(s) in proper container(s)? Yes ☒ No ☐
7. Sufficient sample volume for indicated test(s)? Yes ☒ No ☐
8. Are samples (except VOA and ONG) properly preserved? Yes ☒ No ☐
9. Was preservative added to bottles? Yes ☐ No ☒ NA ☐
10. VOA vials have zero headspace? Yes ☐ No ☐ No VOA Vials ☒
11. Were any sample containers received broken? Yes ☐ No ☒
12. Does paperwork match bottle labels?
(Note discrepancies on chain of custody) Yes ☒ No ☐
13. Are matrices correctly identified on Chain of Custody? Yes ☒ No ☐
14. Is it clear what analyses were requested? Yes ☒ No ☐
15. Were all holding times able to be met?
(If no, notify customer for authorization.) Yes ☒ No ☐

of preserved
bottles checked
for pH: _____
(<2 or >12 unless noted)
Adjusted? _____
Checked by: _____

Special Handling (if applicable)

16. Was client notified of all discrepancies with this order? Yes ☐ No ☐ NA ☒

Person Notified: _____ Date: _____
By Whom: _____ Via: ☐ eMail ☐ Phone ☐ Fax ☐ In Person
Regarding: _____
Client Instructions: _____

17. Additional remarks:

18. Cooler Information

Cooler No	Temp $^{\circ}\text{C}$	Condition	Seal Intact	Seal No	Seal Date	Signed By
1	1.1	Good	Yes			

Turn-Around Time:

☒ Standard ☐ Rush

Project Name:

Project #:

Project Manager:

Sampler: 1-10X

On Ice: ☒ Yes ☐ No

Sample Temperature: 110°C

--	--	--

Container	Preservative	HEAL No.
-----------	--------------	----------

☐ EDD (Type)

Date	Time	Matrix	Sample Request ID	Container Type and #	Preservative Type	HEAL No.	BTEX + MTE	BTEX + MTE	TPH Method	TPH (Method)	EDB (Method)	3310 (PNA)	RCRA 8 Met	Anions (F, Cl)	8081 Pesticide	8260B (VOA)	8270 (Semi-V)	Air Bubbles
2-13-16	17:00	Soil	L1	402		1612B53									X			
			L2			-001									X			
			L3			-002									X			
			L5			-003									X			
			L7			-004									X			
			D2-3			-005									X			
			D2-2			-006	X	X							X			
			L4			-007									X			
			L6			-008									X			
						-009									X			

Received by: Date _____ Time _____

Received by: _____ Date _____ Time _____



HALL ENVIRONMENTAL ANALYSIS LABORATORY

www.hallenvironmental.com

4901 Hawkins NE - Albuquerque, NM 87109

Tel. 505-345-3975 Fax 505-345-4107

Analysis Request

[illegible]

Remarks:

Received by: andrew Date 12/20/16 Time 0946

Received by: _____ Date _____ Time _____

If necessary, samples submitted to Hall Environmental may be subcontracted to other accredited laboratories. This serves as notice of this possibility. Any sub-contracted data will be clearly noted on the analytical report.

APPENDIX B

FORM C141 FINAL

District I
1625 N. French Dr., Hobbs, NM 88240
District II
811 S. First St., Artesia, NM 88210
District III
1000 Rio Brazos Road, Aztec, NM 87410
District IV
1220 S. St. Francis Dr., Santa Fe, NM 87505

State of New Mexico
Energy Minerals and Natural Resources

Form C-141
Revised August 8, 2011

Oil Conservation Division
1220 South St. Francis Dr.
Santa Fe, NM 87505

Submit 1 Copy to appropriate District Office in
accordance with 19.15.29 NMAC.

Release Notification and Corrective Action

OPERATOR

☐ Initial Report ☒ Final Report

Name of Company Juhad Oil, LLC	Contact James Campanella
Address P.O. Box 568	Telephone No. 575-748-1280
Facility Name Barr None Federal #1	Facility Type Oil Well

Surface Owner BLM	Mineral Owner BLM	API No. 30-025-32221
-------------------	-------------------	----------------------

LOCATION OF RELEASE

Unit Letter E	Section 10	Township 22S	Range 32E	Feet from the 1980'	North/South Line North	Feet from the 660'	East/West Line West	County Lea
------------------	---------------	-----------------	--------------	------------------------	---------------------------	-----------------------	------------------------	---------------

Latitude 32.407936° Longitude -103.668888°

NATURE OF RELEASE

Type of Release Crude oil and Produced water	Volume of Release 12 bbl oil, 30 bbl produced water	Volume Recovered 0 bbl oil, 0 bbl produced water
Source of Release Broken Flowline	Date and Hour of Occurrence 11-8-16, 11:00 am	Date and Hour of Discovery 11-8-16, 9:00 am
Was Immediate Notice Given? <input checked="" type="checkbox"/> Yes <input type="checkbox"/> No <input type="checkbox"/> Not Required	If YES, To Whom? Division 1	
By Whom? James B Campanella	Date and Hour	
Was a Watercourse Reached? <input type="checkbox"/> Yes <input checked="" type="checkbox"/> No	If YES, Volume Impacting the Watercourse.	

If a Watercourse was Impacted, Describe Fully.*

No


Describe Cause of Problem and Remedial Action Taken.*

A flow line boke causing fluids to leak on pad and over old drill pit.

Describe Area Affected and Cleanup Action Taken.*

The affected area was to be 220 feet long by 35 feet wide. Samples will be taken and work plan submitted for clean up.

I hereby certify that the information given above is true and complete to the best of my knowledge and understand that pursuant to NMOCD rules and regulations all operators are required to report and/or file certain release notifications and perform corrective actions for releases which may endanger public health or the environment. The acceptance of a C-141 report by the NMOCD marked as "Final Report" does not relieve the operator of liability should their operations have failed to adequately investigate and remediate contamination that pose a threat to ground water, surface water, human health or the environment. In addition, NMOCD acceptance of a C-141 report does not relieve the operator of responsibility for compliance with any other federal, state, or local laws and/or regulations.

 Signature:		OIL CONSERVATION DIVISION	
Printed Name: James B Campanella		Approved by Environmental Specialist:	
Title: Member/ Manager		Approval Date:	Expiration Date:
E-mail Address: jbc@judahoil.com		Conditions of Approval:	
Date: 2/6/17 Phone:		Attached <input type="checkbox"/>	

* Attach Additional Sheets If Necessary