

DISTRICT I  
P.O. Box 1880, Hobbs, NM 88241-1880

State of New Mexico

Energy, Minerals and Natural Resources Department

Form C-102  
Revised February 10, 1994  
Submit to Appropriate District Office  
State Lease - 4 Copies  
Fee Lease - 3 Copies

DISTRICT II  
P.O. Drawer DD, Artesia, NM 88211-0719

OIL CONSERVATION DIVISION

P.O. Box 2088

Santa Fe, New Mexico 87504-2088

DISTRICT III  
1000 Rio Brazos Rd., Aztec, NM 87410

DISTRICT IV  
P.O. BOX 2068, SANTA FE, N.M. 87504-2068

WELL LOCATION AND ACREAGE DEDICATION PLAT

AMENDED REPORT

API Number 30-025-36541	Pool Code 50540	Pool Name Querecho Plains Strawn
Property Code 32086	Property Name QUERECHO PLAINS Federal Com	Well Number 2
OGRID No. 215758	Operator Name PECOS PRODUCTION COMPANY	Elevation 3773'

Surface Location

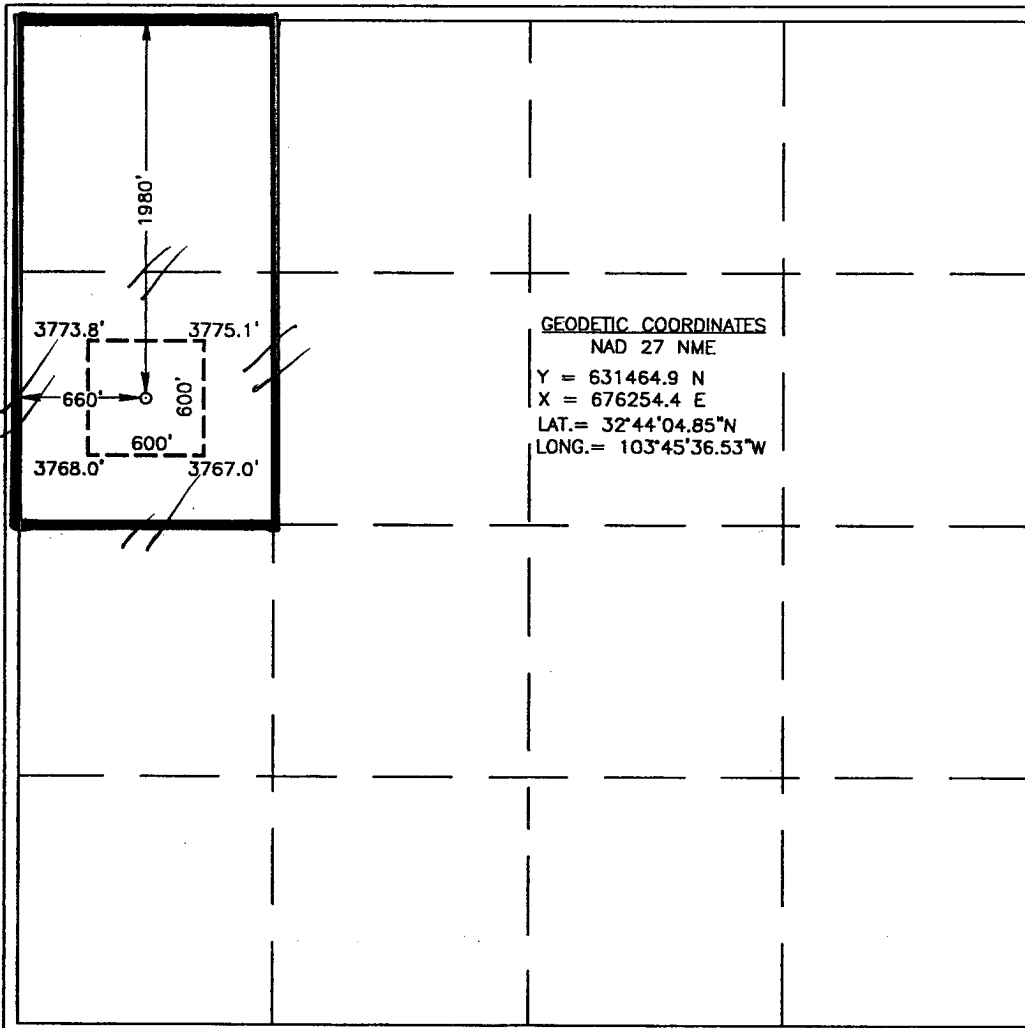
UL or lot No.	Section	Township	Range	Lot Idn	Feet from the	North/South line	Feet from the	East/West line	County
E	22	18-S	32-E		1980'	NORTH	660'	WEST	LEA

Bottom Hole Location If Different From Surface

UL or lot No.	Section	Township	Range	Lot Idn	Feet from the	North/South line	Feet from the	East/West line	County

Dedicated Acres 80 <del>40</del>	Joint or Infill	Consolidation Code	Order No.
-------------------------------------	-----------------	--------------------	-----------

NO ALLOWABLE WILL BE ASSIGNED TO THIS COMPLETION UNTIL ALL INTERESTS HAVE BEEN CONSOLIDATED OR A NON-STANDARD UNIT HAS BEEN APPROVED BY THE DIVISION



GEODEIC COORDINATES  
NAD 27 NME  
Y = 631464.9 N  
X = 676254.4 E  
LAT.= 32°44'04.85"N  
LONG.= 103°45'36.53"W

OPERATOR CERTIFICATION

I hereby certify the the information contained herein is true and complete to the best of my knowledge and belief.

*William R. Huck*  
Signature

William R. Huck  
Printed Name

VP-Operations & Engr.  
Title

5-19-04  
Date

SURVEYOR CERTIFICATION

I hereby certify that the well location shown on this plat was plotted from field notes of actual surveys made by me or under my supervision, and that the same is true and correct to the best of my belief.

November 14, 2003

Date Surveyed  
Signature & Seal of Professional Surveyor

*Gary Edson*  
GARY EDSON  
03.11.1267  
Certificate No. GARY EDSON 12641