

District I  
1625 N. French Dr., Hobbs, NM 88240  
District II  
1301 W. Grand Avenue, Artesia, NM 88210  
District III  
1000 Rio Brazos Rd., Aztec, NM 87410  
District IV  
1220 S. St. Francis Dr., Santa Fe, NM 87505

State of New Mexico  
Energy, Minerals & Natural Resources

Form C-101  
May 27, 2004

Oil Conservation Division  
1220 S. St. Francis Dr.  
Santa Fe, NM 87505

Submit to appropriate District Office

☐ AMENDED REPORT

**APPLICATION FOR PERMIT TO DRILL, RE-ENTER, DEEPEN, PLUGBACK, OR ADD A ZONE**

<sup>1</sup> Operator Name and Address MISSION RESOURCES CORPORATION 1331 LAMAR, SUITE 1455 HOUSTON, TEXAS 77010-3039		<sup>2</sup> OGRID Number 148381
<sup>4</sup> Property Code 33493	<sup>5</sup> Property Name STATE A A/C 2	<sup>3</sup> API Number 30-025-36910
<sup>9</sup> Proposed Pool 1 JALMAT;TANSILL-YATES-7RIVERS (GAS)79240		<sup>6</sup> Well No. 083
<sup>10</sup> Proposed Pool 2		

**<sup>7</sup>Surface Location**

UL or lot no.	Section	Township	Range	Lot. Idn	Feet from the	North/South Line	Feet from the	East/West line	County
N	11	22S	36E		660	SOUTH	1980	WEST	LEA

**<sup>8</sup>Proposed Bottom Hole Location If Different From Surface**

UL or lot no.	Section	Township	Range	Lot. Idn	Feet from the	North/South Line	Feet from the	East/West line	County
SAME									

**Additional Well Location**

<sup>11</sup> Work Type Code N	<sup>12</sup> Well Type Code G	<sup>13</sup> Cable/Rotary R	<sup>14</sup> Lease Type Code S	<sup>15</sup> Ground Level Elevation 3539
<sup>16</sup> Multiple NO	<sup>17</sup> Proposed Depth 4000'	<sup>18</sup> Formation Queen	<sup>19</sup> Contractor To be Determined	<sup>20</sup> Spud Date Dec. 2004
Depth to ground water 137'		Distance from nearest fresh water well 1000+		Distance from nearest surface water 1000+
Pit: Liner: Synthetic <input checked="" type="checkbox"/> 12 mils thick Clay <input checked="" type="checkbox"/> Pit Volume 5704 bbls Drilling Method: Rotary				
Closed-Loop System <input type="checkbox"/> Fresh Water <input checked="" type="checkbox"/> Brine <input checked="" type="checkbox"/> Diesel/Oil-based <input type="checkbox"/> Gas/Air <input type="checkbox"/>				

**<sup>21</sup>Proposed Casing and Cement Program**

Hole Size	Casing Size	Casing weight/foot	Setting Depth	Sacks of Cement	Estimated TOC
12-1/4"	8-5/8"	24#	600'	325	SURFACE
7-7/8"	4-1/2"	11.6#	4000'	655	SURFACE

<sup>22</sup> Describe the proposed program. If this application is to DEEPEN or PLUG BACK, give the data on the present productive zone and proposed new productive zone. Describe the blowout prevention program, if any. Use additional sheets if necessary.

Please see Attached:

Well Location & Acreage Dedication Plat (C-102)  
Proposed Well Plan  
Casing/Cementing Program

<sup>23</sup> I hereby certify that the information given above is true and complete to the best of my knowledge and belief. I further certify that the drilling pit will be constructed according to NMOCD guidelines ☒ a general permit ☐, or an (attached) alternative OCD-approved plan ☐  
Signature: *Nancy K. Gatti*

Printed name: Nancy K. Gatti

Title: Regulatory Coordinator

E-mail Address: nancy.gatti@mrccorp.com

Date: 10/11/04

Phone: 713-495-3128

**OIL CONSERVATION DIVISION**

Approved by:

Title:

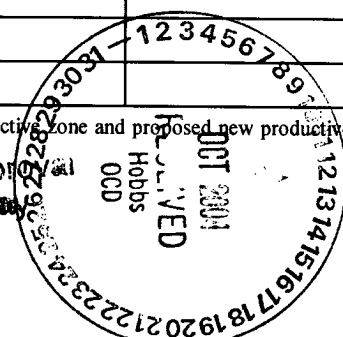
Approval Date:

Expiration Date:

OCT 13 2004

Conditions of Approval:

Attached ☐



DISTRICT I  
P.O. Box 1980, Hobbs, NM 88241-1980

State of New Mexico

Energy, Minerals and Natural Resources CORPORATION Department

Form C-102  
Revised February 10, 1994  
Submit to Appropriate District Office  
State Lease - 4 Copies  
Fee Lease - 3 Copies

DISTRICT II  
P.O. Drawer DD, Artesia, NM 88211-0719

DISTRICT III  
1000 Rio Brazos Rd., Aztec, NM 87410

DISTRICT IV  
P.O. BOX 2088, SANTA FE, N.M. 87504-2088

OIL CONSERVATION DIVISION

P.O. Box 2088

Santa Fe, New Mexico 87504-2088

☐ AMENDED REPORT

WELL LOCATION AND ACREAGE DEDICATION PLAT

API Number <b>30-025-3691D</b>	Pool Code 79240	Pool Name Jalmat;Tansill-Yates-7Rivers (Gas) 79240
Property Code 33493	Property Name STATE A A/C 2 LOC N	Well Number #83
GRID No. 148381	Operator Name MISSION RESOURCES CORPORATION	Elevation 3539

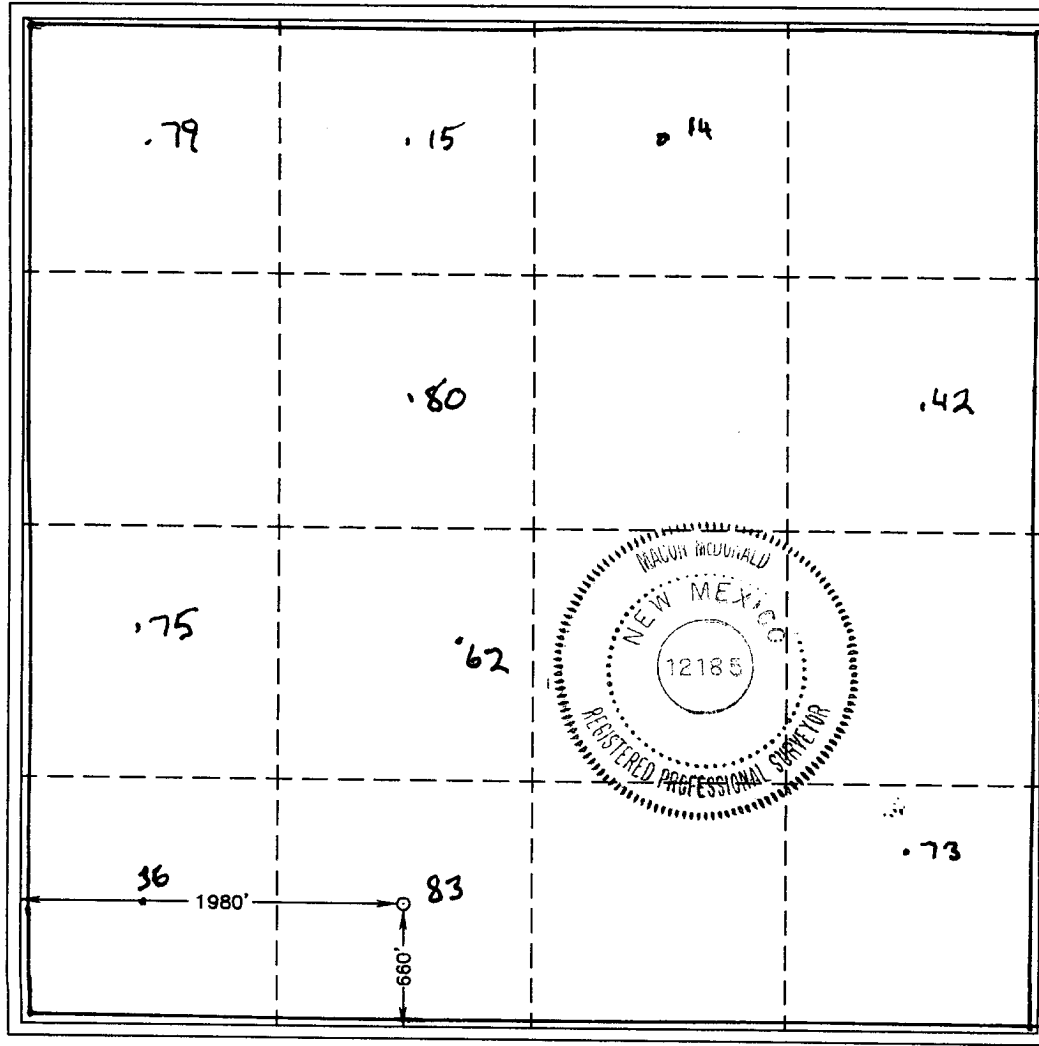
Surface Location

UL or lot No. N	Section 11	Township 22 S	Range 36 E	Lot Idn	Feet from the 660	North/South line SOUTH	Feet from the 1980	East/West line WEST	County LEA
--------------------	---------------	------------------	---------------	---------	----------------------	---------------------------	-----------------------	------------------------	---------------

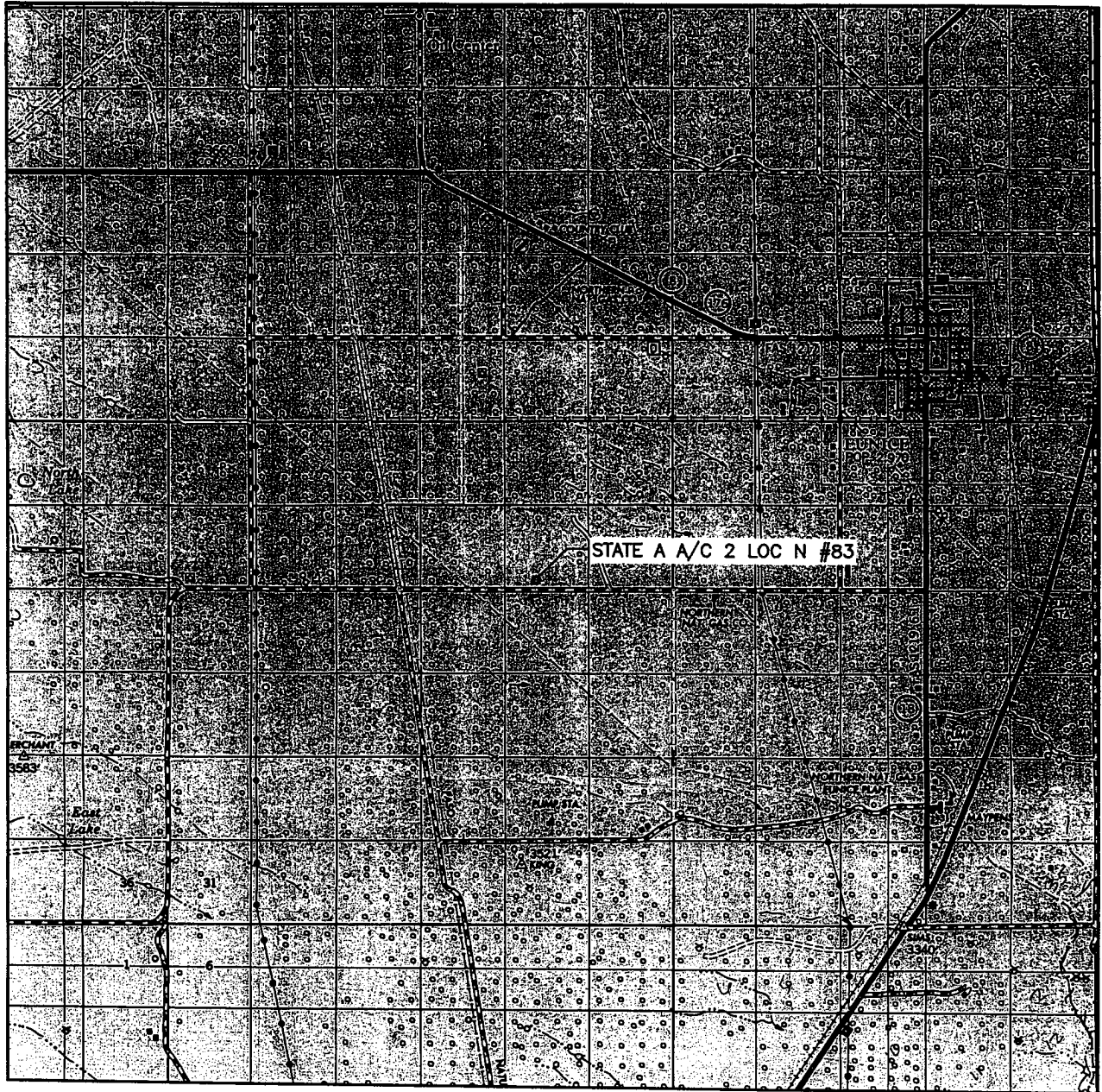
Bottom Hole Location If Different From Surface

UL or lot No. SAME	Section	Township	Range	Lot Idn	Feet from the	North/South line	Feet from the	East/West line	County
Dedicated Acres .40	Joint or Infill	Consolidation Code	Order No. R-6483-C & R-8575-C						

NO ALLOWABLE WILL BE ASSIGNED TO THIS COMPLETION UNTIL ALL INTERESTS HAVE BEEN CONSOLIDATED  
OR A NON-STANDARD UNIT HAS BEEN APPROVED BY THE DIVISION

	<p>OPERATOR CERTIFICATION</p> <p>I hereby certify the the information contained herein is true and complete to the best of my knowledge and belief.</p> <p><i>Nancy K. Gatti</i> Signature Nancy K. Gatti Printed Name Regulatory Coord. Title 10/11/04 Date</p> <p>SURVEYOR CERTIFICATION</p> <p>I hereby certify that the well location shown on this plat was plotted from field notes of actual surveys made by me or under my supervision, and that the same is true and correct to the best of my belief.</p> <p>February 10, 2004 Date Surveyed Signature &amp; Seal of Professional Surveyor <i>Macon McDonald</i> W.O. Num. 2004-0117 Certificate No. MACON McDONALD N.M. P.L.S. No. 12185</p>
---	---

# VICINITY MAP



SCALE: 1" = 2 MILES

SEC. 11 TWP. 22-S RGE. 36-E

SURVEY N.M.P.M.

COUNTY LEA

DESCRIPTION 660' FSL & 1980' FWL

ELEVATION 3539'

OPERATOR MISSION RESOURCES CORPORATION

LEASE STATE A A/C 2 LOC N

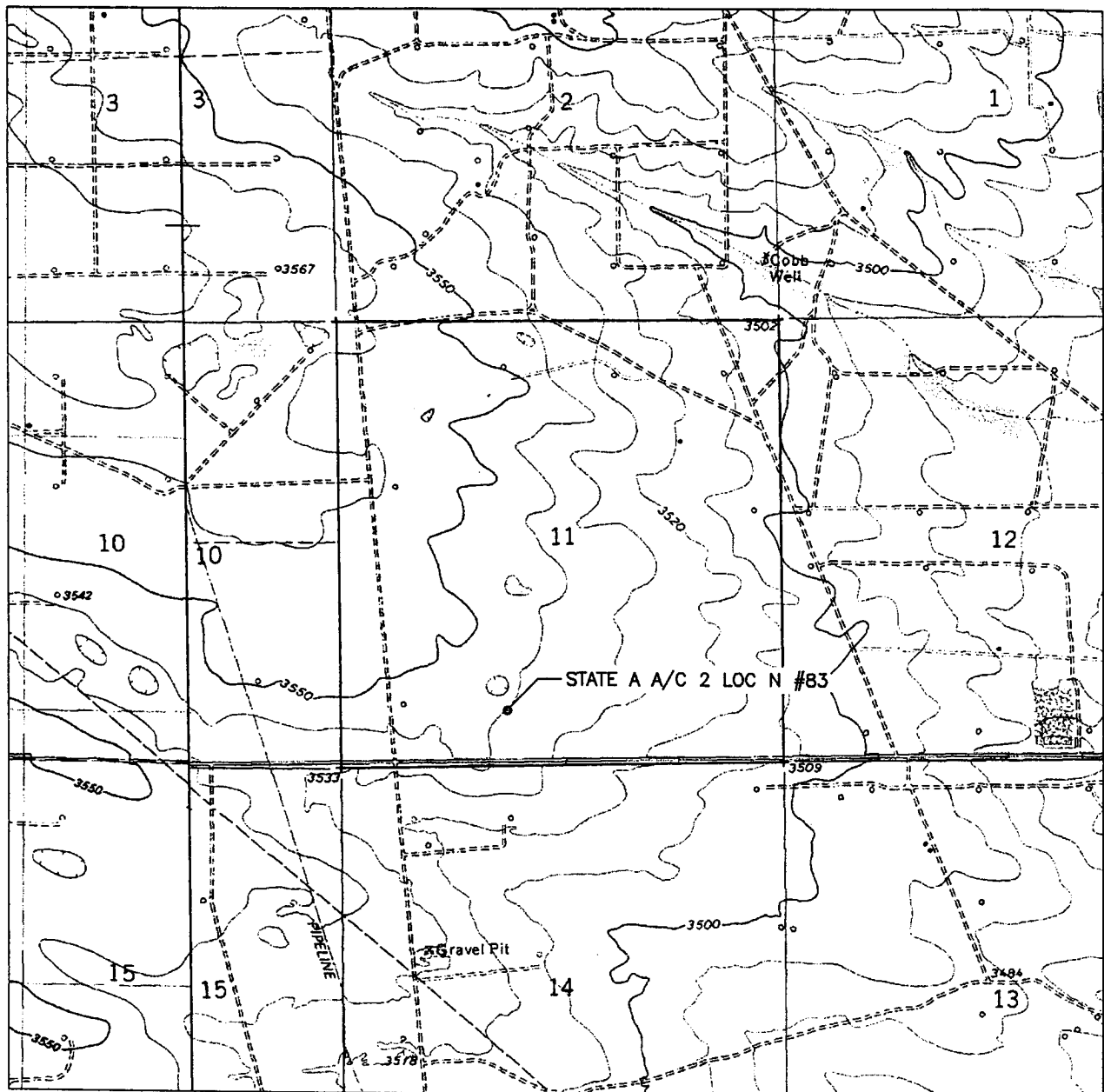
**WEST COMPANY**  
of Midland, Inc.

110 W. LOUISIANA, STE. 110

MIDLAND TEXAS, 79701

(432) 687-0865 - (432) 687-0868 FAX

# LOCATION VERIFICATION MAP



SCALE: 1" = 2000'

CONTOUR INTERVAL = 10'

SEC. 11 TWP. 22-S RGE. 36-E

SURVEY N.M.P.M.

COUNTY LEA

DESCRIPTION 660' FSL & 1980' FWL

ELEVATION 3539'

OPERATOR MISSION RESOURCES CORPORATION

LEASE STATE A A/C 2 LOC N

U.S.G.S. TOPOGRAPHIC MAP  
EUNICE, N.M.



**WEST COMPANY**  
**of Midland, Inc.**

110 W. LOUISIANA, STE. 110  
MIDLAND TEXAS, 79701  
(432) 687-0865 - (432) 687-0868 FAX

**STATE A A/C 2, WELL NO. 83  
660' FSL & 1980' FWL, SECTION 11, T-22S-R36E, UNIT LETTER "N"  
LEA COUNTY, NM**

**PROPOSED WELL PLAN**

1. Drill 12-1/4" hole from surface to 600'.
2. Run 8-5/8" 24# casing to 600', cement w/ 240 sx cement with additives to surface.
3. Drill 7-7/8" hole to 4000'
4. Run 4-1/2" 11.6# casing to 4000' w/ 655 sx cement with additives to surface.
5. Perforate Yates/7-Rivers from 3000' to 3500'
6. Acid and Frac treatment will be determined after looking at the logs.
7. Complete and put on production.

**CASING PROGRAM:**

**SURFACE:** 8-5/8" Casing in 12-1/4" Hole at 600'.

**PRODUCTION:** 4-1/2" casing in 7-7/8" Hole at 4000'.

**CEMENTING PROGRAM:**

**SURFACE:**

Lead: 125 sacks Class C Mixed at 12.7 ppg  
Additives: 0.25 pps Cello-Flake + 6% Bentonite

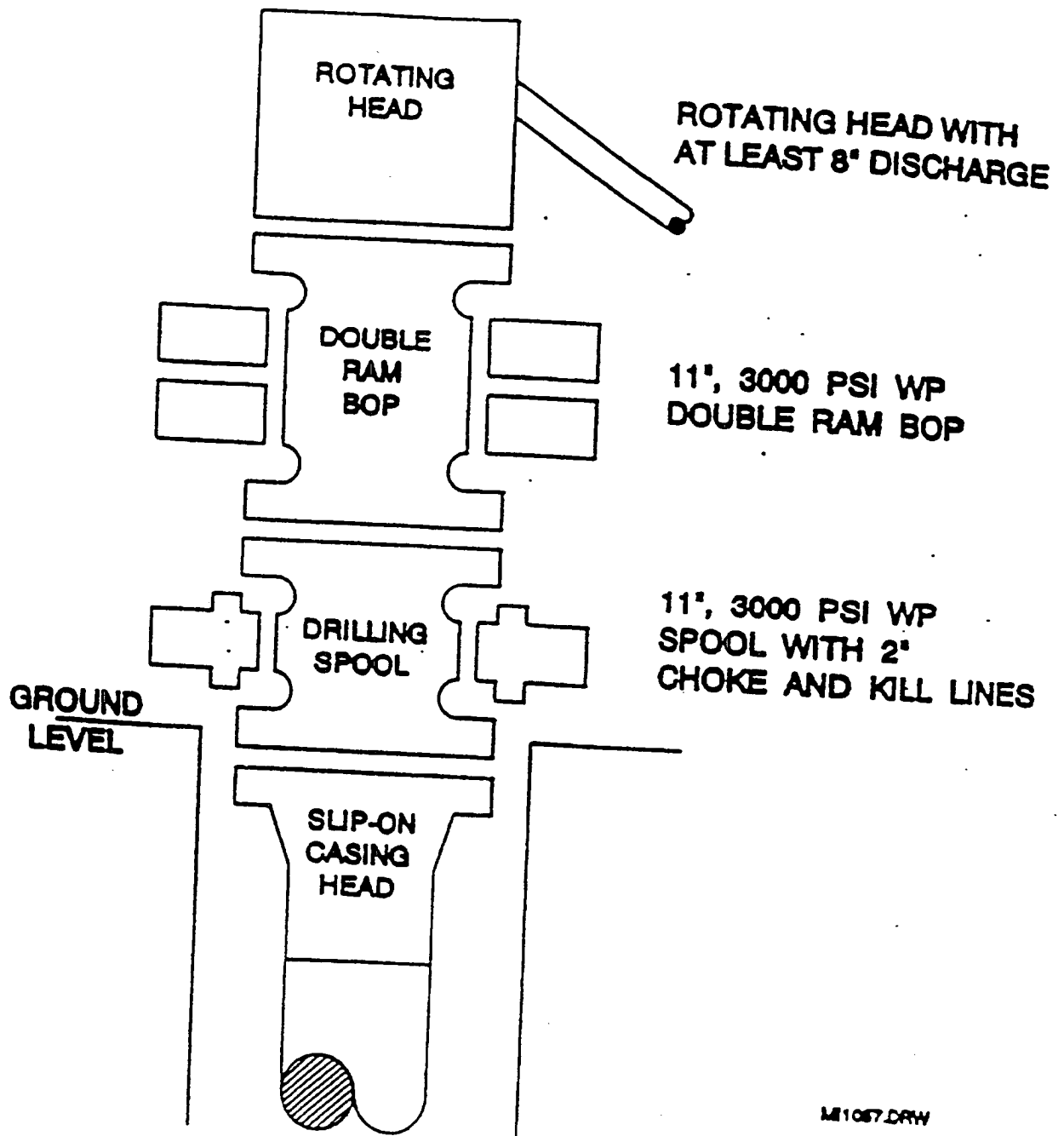
Tail: 200 sacks Class C Mixed at 14.8 ppg  
Additives: 2% CACL2

**PRODUCTION:**

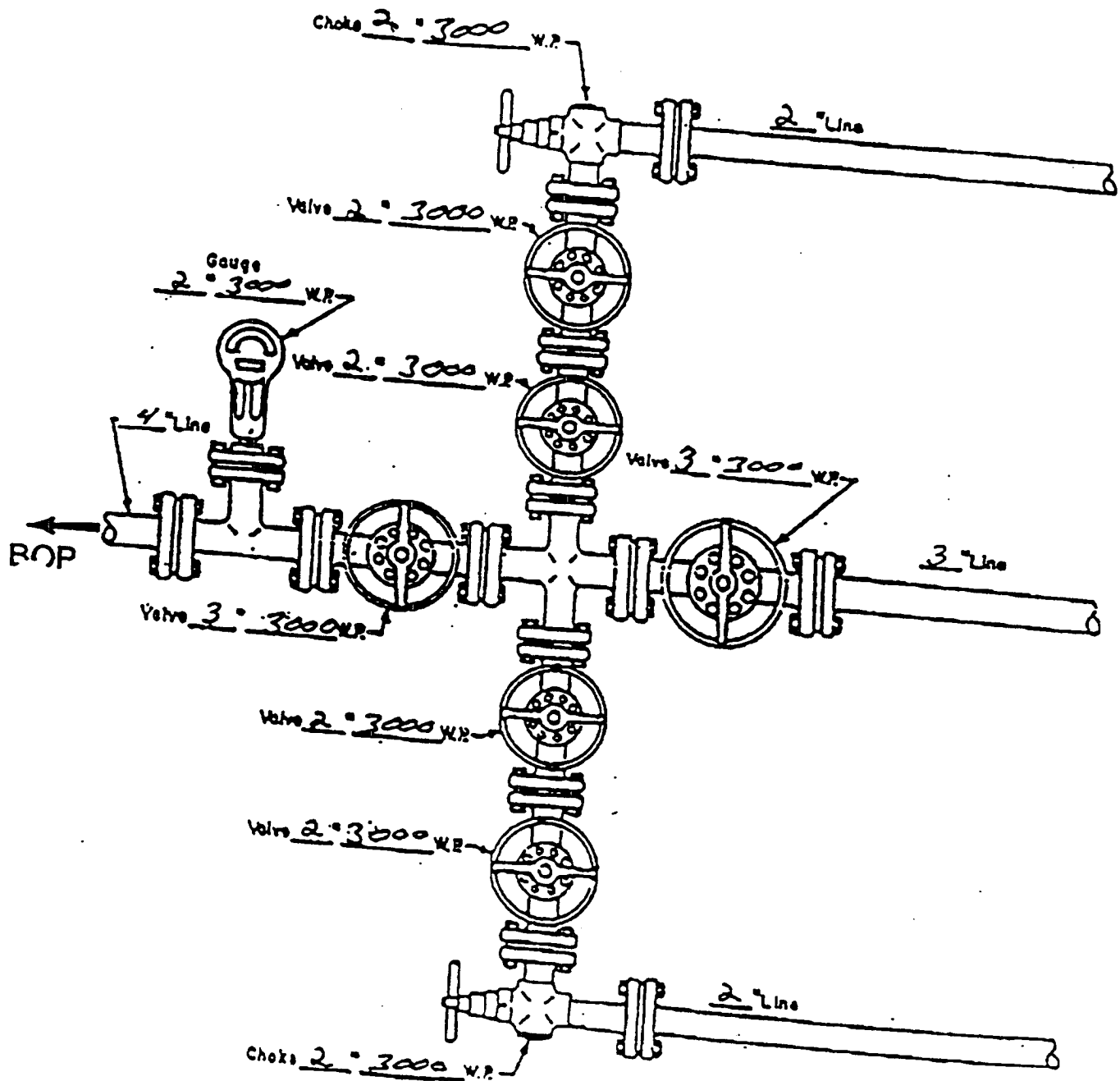
Lead: 320 sacks Class C Mixed at 11.9 ppg  
Additives: 35:65 Poz (Fly Ash) + 6% Bentointe

Tail: 335 sacks Class C Mixed at 14.0 ppg  
Additives: 50:50 Poz (Fly Ash) + 2% Gel

# BOP SPECIFICATIONS



# CHOKE MANIFOLD DIAGRAM



MANIFOLD  
3000 W.P.

- ☒ Manual
- ☐ Hydraulic