

District I  
1625 N. French Dr., Hobbs, NM 88240  
District II  
1301 W. Grand Avenue, Artesia, NM 88210  
District III  
1000 Rio Brazos Road, Aztec, NM 87410  
District IV  
1220 S. St. Francis Dr., Santa Fe, NM 87505

State of New Mexico  
Energy Minerals and Natural Resources

Form C-101  
May 27, 2004

Oil Conservation Division  
1220 South St. Francis Dr.  
Santa Fe, NM 87505

Submit to appropriate District Office

☐ AMENDED REPORT

APPLICATION FOR PERMIT TO DRILL, RE-ENTER, DEEPEN, PLUGBACK, OR ADD A ZONE

Operator Name and Address LATIGO PETROLEUM, INC. 550 WEST TEXAS SUITE 700 MIDLAND, TEXAS 79701		2 OGRID Number 227001
Property Code 35103		3 Property Name ANDERSON RANCH "9" STATE
Proposed Pool 1 ANDERSON RANCH-MORROW (GAS) (70240)		Well No. 1
Proposed Pool 2		

7 Surface Location									
UL or lot no. A	Section 9	Township 16S	Range 32E	Lot Idn	Feet from the 1305	North-South line NORTH	Feet from the 1305	East-West line EAST	County LEA

8 Proposed Bottom Hole Location If Different From Surface									
UL or lot no.	Section	Township	Range	Lot Idn	Feet from the	North-South line	Feet from the	East-West line	County

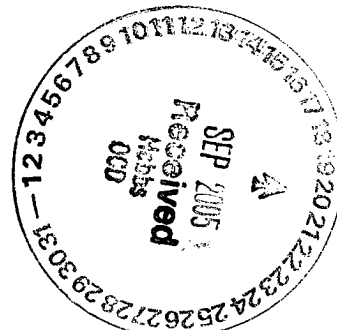
Additional Well Information				
11 Work Type Code N	12 Well Type Code G	13 Cable/Rotary ROTARY	14 Lease Type Code S	15 Ground Level Elevation 43.30
16 Multiple NO	17 Proposed Depth 12,500'	18 Formation MORROW	19 Contractor UNKNOWN	20 Spud Date WHEN APPROVED
Depth to Groundwater 65' +		Distance from nearest fresh water well 3000'		Distance from nearest surface water PLAYA 1600' NORTHEAST
Pit Liner: Synthetic <input checked="" type="checkbox"/> 12 mils thick Clay <input type="checkbox"/> Pit Volume: 20M bbls				
Drilling Method: Fresh Water <input checked="" type="checkbox"/> Brine <input checked="" type="checkbox"/> Diesel/Oil-based <input type="checkbox"/> Gas/Air <input type="checkbox"/>				
Closed-Loop System <input type="checkbox"/>				

21 Proposed Casing and Cement Program					
Hole Size	Casing Size	Casing weight/foot	Setting Depth	Sacks of Cement	Estimated TOC
26"	20"	NA Conductor	40'	Redi-mix	Surface
17 1/2"	13 3/8"	48#	500'	525 Sx.	Surface
12 1/4"	9 5/8"	36 & 40#	4500'	1275 Sx.	Surface
7 7/8"	5 1/2"	20#	12,500'	1400 Sx.	Est TOC 4000'

22 Describe the proposed program. If this application is to DEEPEN or PLUG BACK, give the data on the present productive zone and proposed new productive zone. Describe the blowout prevention program, if any. Use additional sheets if necessary.

SEE ATTACHED SHEET

Permit Expires 1 Year From Approval  
Date Unless Drilling Underway



I hereby certify that the information given above is true and complete to the best of my knowledge and belief. I further certify that the drilling pit will be constructed according to NMOC guidelines <input checked="" type="checkbox"/> a general permit <input type="checkbox"/> or an (attached) alternative OCD-approved plan <input type="checkbox"/> .		OIL CONSERVATION DIVISION	
Printed name: Joe T. Janica		Approved by: [Signature]	
Title: Agent		Approval Date: SEP 22 2005	
E-mail Address:		Expiration Date: PETROLEUM ENGINEER	
Date: 09/21/05		Conditions of Approval Attached <input type="checkbox"/>	
Phone: 505-391-8503			

1. DRILL 26" hole to 40'. Set 40' of 20" conductor pipe and cement to surface with Redi-mix.
2. Drill 17½" hole to 500'. Run and set 500' of 13 3/8" 48# H-40 ST&C casing. Cement with 525 Sx. of Class "C" cement + 2% CaCl, + ¼# Flocele/Sx. Circulate cement to surface.
3. Drill 12¼" hole to 4500'. Run and set 4500' of 9 5/8" 36 & 40# J-55 ST&C casing. Cement with 1275 Sx. of Class "C" cement + additives, circulate cement to surface.
4. Drill 7 7/8" hole to 12,500'. Run and set 12,500' of 5½" 20# P-110 LT&C,BTC casing. Cement with 1400 Sx. of Class "H" Premeium Plus cement + additives. estimate top of cement 4000' from surface.

## DISTRICT I

1625 N. FRENCH DR., HOBBS, NM 88240

## DISTRICT II

1301 W. GRAND AVENUE, ARTESIA, NM 88210

## DISTRICT III

1000 Rio Brazos Rd., Aztec, NM 87410

## DISTRICT IV

1220 S. ST. FRANCIS DR., SANTA FE, NM 87505

## State of New Mexico

Energy, Minerals and Natural Resources Department

## OIL CONSERVATION DIVISION

1220 SOUTH ST. FRANCIS DR.  
Santa Fe, New Mexico 87505

Form C-102

Revised JUNE 10, 2003

Submit to Appropriate District Office

State Lease - 4 Copies

Fee Lease - 3 Copies

## WELL LOCATION AND ACREAGE DEDICATION PLAT

☐ AMENDED REPORT

API Number <b>30-025-37461</b>	Pool Code <b>70240</b>	Pool Name <b>ANDERSON RANCH-MORROW (GAS)</b>
Property Code <b>35103</b>	Property Name <b>ANDERSON RANCH 9 STATE</b>	Well Number <b>1</b>
OGRID No. <b>227001</b>	Operator Name <b>LATIGO PETROLEUM, INC.</b>	Elevation <b>4330'</b>

## Surface Location

UL or lot No.	Section	Township	Range	Lot Idn	Feet from the	North/South line	Feet from the	East/West line	County
A	9	16-S	32-E		1305	NORTH	1305	EAST	LEA

## Bottom Hole Location If Different From Surface

UL or lot No.	Section	Township	Range	Lot Idn	Feet from the	North/South line	Feet from the	East/West line	County
Dedicated Acres 320	Joint or Infill	Consolidation Code	Order No.						

NO ALLOWABLE WILL BE ASSIGNED TO THIS COMPLETION UNTIL ALL INTERESTS HAVE BEEN CONSOLIDATED  
OR A NON-STANDARD UNIT HAS BEEN APPROVED BY THE DIVISION

N/2 of NW/4 OG-6013	NW/4 of NE/4 V-5232	NE/4 of NE/4 VB-0681
S/2 of N/2 V-5232		
GEODETIC COORDINATES NAD 27 NME Y=706051.4 N X=673845.5 E LAT.=32°56'23.01" N LONG.=103°46'00.05" W		

## OPERATOR CERTIFICATION

I hereby certify the the information  
contained herein is true and complete to the  
best of my knowledge and belief.

Signature

Joe T. Janica

Printed Name

Agent

Title

09/19/05

Date

## SURVEYOR CERTIFICATION

I hereby certify that the well location shown  
on this plat was plotted from field notes of  
actual surveys made by me or under my  
supervision, and that the same is true and  
correct to the best of my belief.

SEPTEMBER 13, 2005

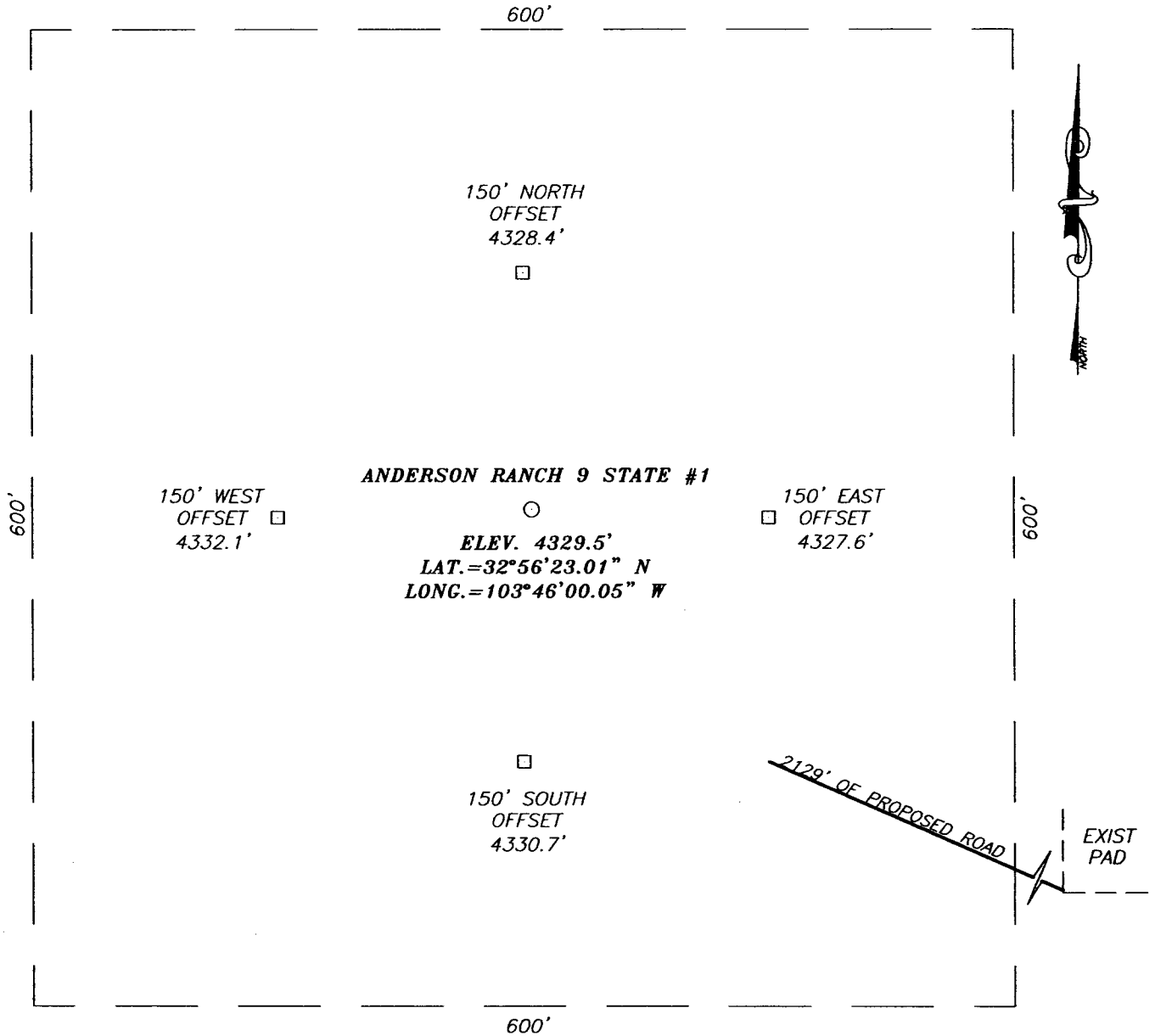
Date Surveyed

JR

Signature & Seal of  
Professional Surveyor

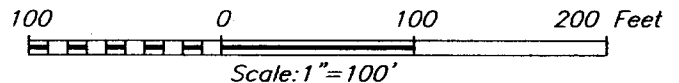
GARY EIDSON  
NEW MEXICO  
REGISTERED PROFESSIONAL SURVEYOR  
05.11.1371  
Certificate No. GARY EIDSON 12641

**SECTION 9, TOWNSHIP 16 SOUTH, RANGE 32 EAST, N.M.P.M.,**  
 LEA COUNTY, NEW MEXICO



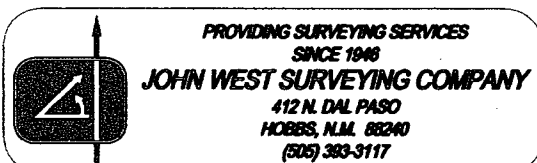
**DIRECTIONS TO LOCATION**

FROM THE INTERSECTION OF ST. HWY. #82 AND  
 CO. RD. L-121 (MENDEL RD.) GO NW ON CO. RD.  
 L-121 APPROX. 5.2 MILES. TURN LEFT (SOUTH)  
 AND GO APPROX. 0.5 MILES. TURN RIGHT (WEST)  
 AND GO APPROX. 0.1 MILES TO THE NEARBURG  
 RANCHO VERDE 10 ST. #2 WELL. FROM THE SW  
 CORNER OF EXIST PAD FOLLOW PROPOSED ROAD  
 SURVEY NW APPROX. 2129' TO THIS LOCATION.



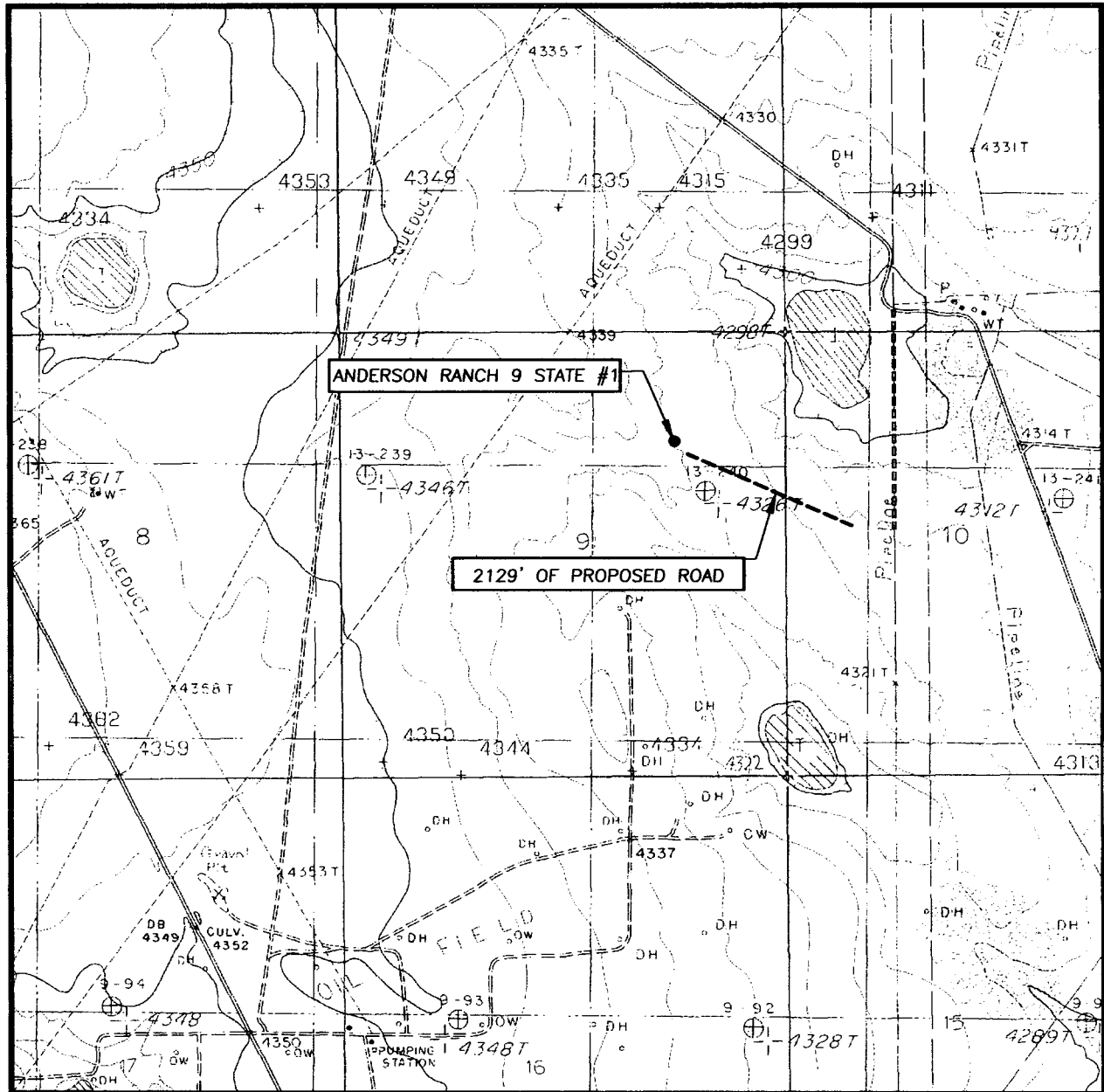
**LATIGO PETROLEUM, INC.**

ANDERSON RANCH 9 STATE #1 WELL  
 LOCATED 1305 FEET FROM THE NORTH LINE  
 AND 1305 FEET FROM THE EAST LINE OF SECTION 9,  
 TOWNSHIP 16 SOUTH, RANGE 32 EAST, N.M.P.M.,  
 LEA COUNTY, NEW MEXICO.



Survey Date: 09/13/05	Sheet 1 of 1 Sheets
W.O. Number: 05.11.1371	Dr By: J.R.
Date: 09/14/05	Disk: CD#5
05111371	Scale: 1"=100'

# LOCATION VERIFICATION MAP



SCALE: 1" = 2000'

CONTOUR INTERVAL:  
MALJAMAR NE, N.M. - 10'

SEC. 9 TWP. 16-S RGE. 32-E

SURVEY N.M.P.M.

COUNTY LEA

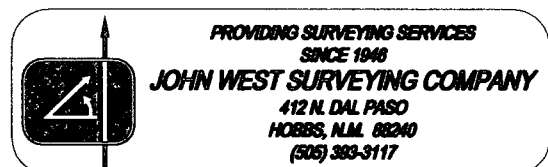
DESCRIPTION 1305' FNL & 1305' FEL

ELEVATION 4330'

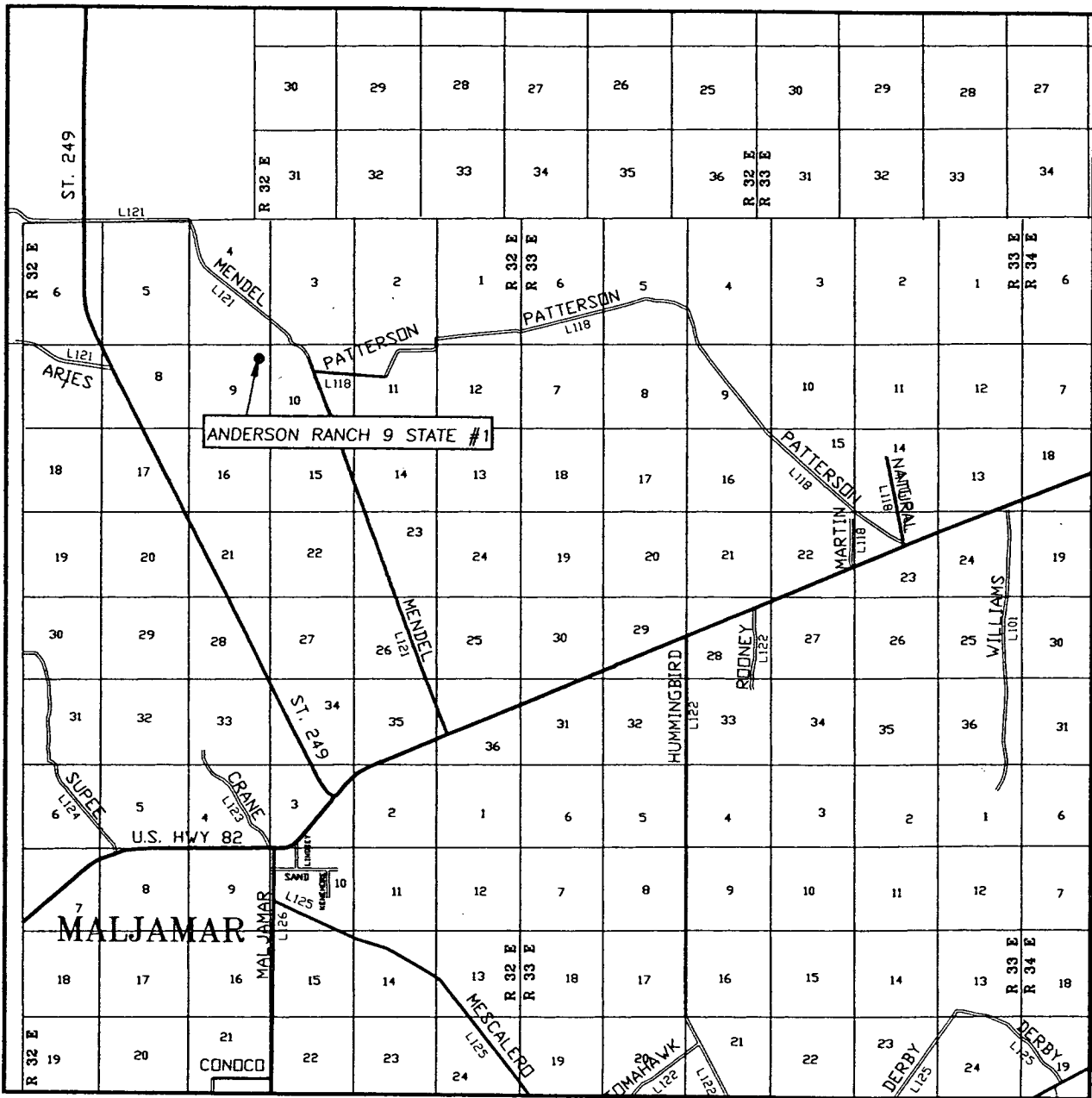
OPERATOR LATIGO PETROLEUM, INC.

LEASE ANDERSON RANCH 9 STATE

U.S.G.S. TOPOGRAPHIC MAP  
MALJAMAR NE, N.M.



# VICINITY MAP



SCALE: 1" = 2 MILES

SEC. 9 TWP. 16-S RGE. 32-E

SURVEY N.M.P.M.

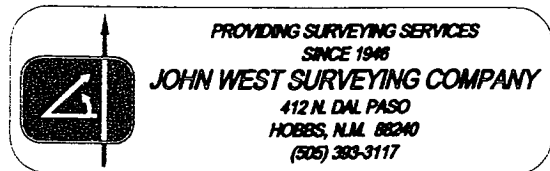
COUNTY LEA

DESCRIPTION 1305' FNL & 1305' FEL

ELEVATION 4330'

OPERATOR LATIGO PETROLEUM, INC.

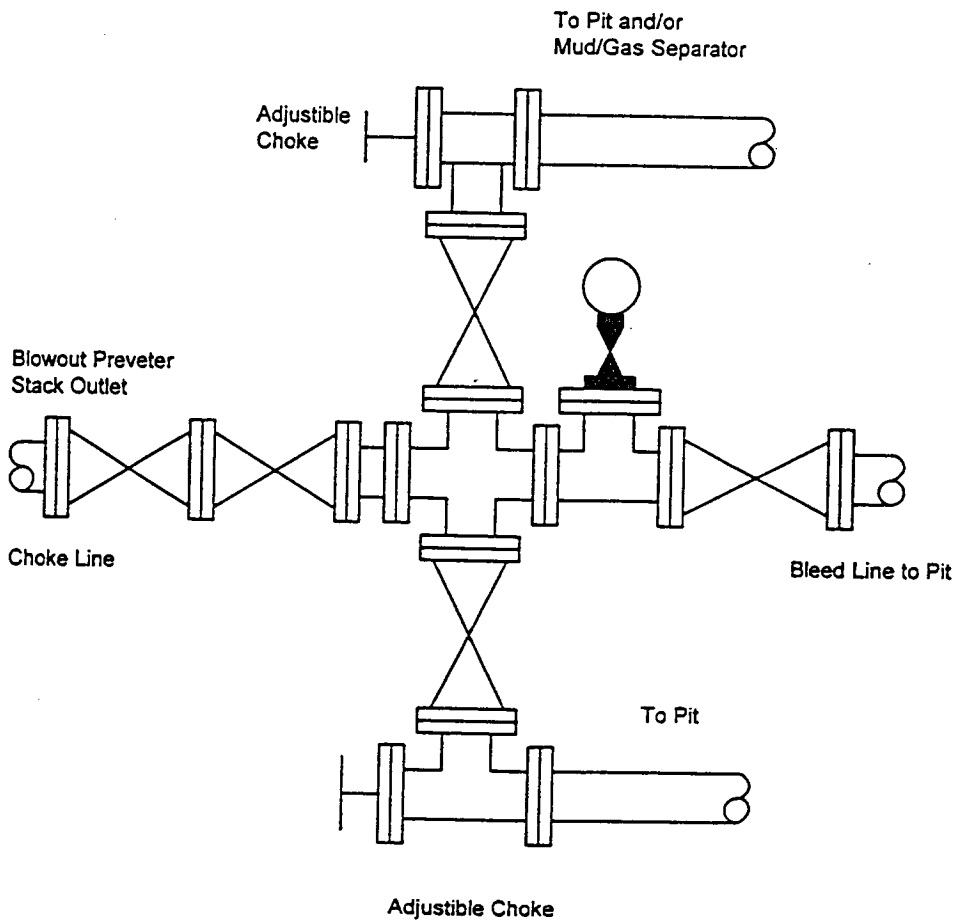
LEASE ANDERSON RANCH 9 STATE



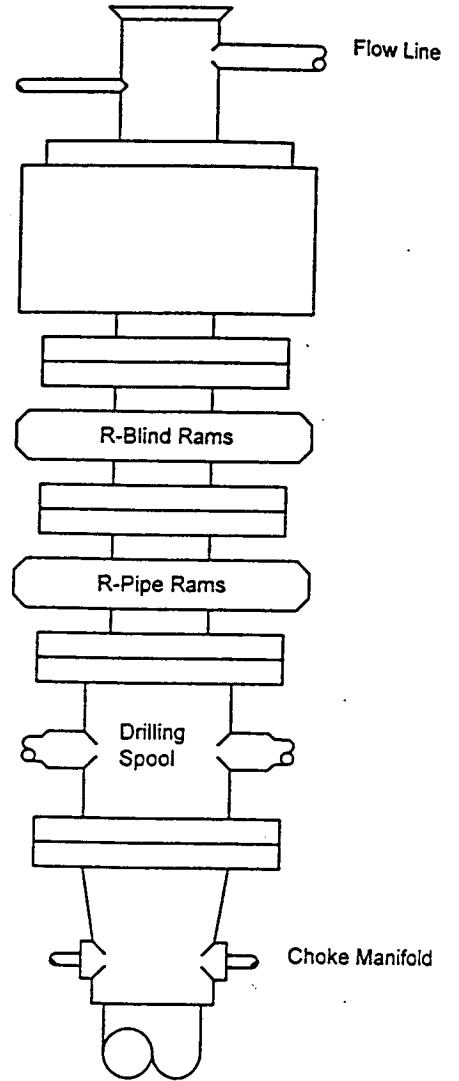
# BLOWOUT PREVENTER SYSTEM

5000 PSI

Choke Manifold Assembly for 5M WP System



Fill Line



TYPE 1500 SERIES  
5000 psi WP