

UNITED STATES
DEPARTMENT OF THE INTERIOR
BUREAU OF LAND MANAGEMENT

APPLICATION FOR PERMIT TO DRILL OR REENTER

FORM APPROVED
OMB No. 1004-0136
Expires November 30, 2000

RECEIVED

AUG 29 2005

OOD-ARTECO

1a. Type of Work: <input checked="" type="checkbox"/> DRILL <input type="checkbox"/> REENTER		7. If Unit or CA Agreement, Name and No. NMNM71016 X
1b. Type of Well: <input checked="" type="checkbox"/> Oil Well <input type="checkbox"/> Gas Well <input type="checkbox"/> Other <input type="checkbox"/> Single Zone <input type="checkbox"/> Multiple Zone		8. Lease Name and Well No. 1796 POKER LAKE UNIT 228
2. Name of Operator Bass Enterprises Production Co.		9. API Well No. 30-015-34307
3a. Address P. O. Box 2760 Midland, TX 79702	3b. Phone No. (include area code) (432)683-2277	10. Field and Pool, or Exploratory NASH DRAW - DELAWARE
4. Location of Well (Report location clearly and in accordance with any State requirements. *) At surface NENW, UL C, 330 FNL, 1650 FWL, 32.10489 LAT, 103.55268 W LON At proposed prod. zone		11. Sec., T., R., M., or Blk, and Survey or Area SEC 31, T24S, R30E, MER NMP
14. Distance in miles and direction from nearest town or post office* 14 MILES EAST OF MALAGA NM		12. County or Parish EDDY
15. Distance from proposed* location to nearest property or lease line, ft. (Also to nearest drig. unit line, if any) 330'		13. State NM
16. No. of Acres in lease 1922		17. Spacing Unit dedicated to this well 40.00
18. Distance from proposed location* to nearest well, drilling, completed, applied for, on this lease, ft. 933'		20. BLM/BIA Bond No. on file
19. Proposed Depth 7650'		21. Elevations (Show whether DF, KDB, RT, GL, etc.) 3180 GL
22. Approximate date work will start* 08/15/2005		23. Estimated duration 12 DAYS

24. Attachments CARLSBAD CONTROLLED WATER BASIN

The following, completed in accordance with the requirements of Onshore Oil and Gas Order No. 1, shall be attached to this form:

- | | |
|---|--|
| 1. Well plat certified by a registered surveyor. | 4. Bond to cover the operations unless covered by an existing bond on file (see Item 20 above). |
| 2. A Drilling Plan | 5. Operation certification. |
| 3. A Surface Use Plan (if the location is on National Forest System Lands, the SUPO shall be filed with the appropriate Forest Service Office). | 6. Such other site specific information and/or plans as may be required by the authorized officer. |

25. Signature 	Name (Printed/Typed) Cindi Goodman	Date 06/17/2005
Title Production Clerk		
Approved by (Signature) /s/ Joe G. Lara	Name (Printed/Typed) /s/ Joe G. Lara	Date AUG 24 2005
Title ACTING FIELD MANAGER		
Office CARLSBAD FIELD OFFICE		

Application approval does not warrant or certify the the applicant holds legal or equitable title to those rights in the subject lease which would entitle the applicant to conduct operations thereon.

Conditions of approval, if any, are attached.

APPROVAL FOR 1 YEAR

Title 18 U.S.C Section 1001 and Title 43 U.S.C. Section 1212, make it a crime for any person knowingly and willfully to make to any department or agency of the United States and false, fictitious or fraudulent statements or representations as to any matter within its jurisdiction.

*(Instructions on reverse)

5-17
79.5

APPROVAL SUBJECT TO
GENERAL REQUIREMENTS
AND SPECIAL STIPULATIONS
ATTACHED

Witness Surface Casing

Surface casing to be set into the Rustler below all fresh water sands.

Production casing will be cemented using Zone Seal cement.

Drilling Procedure, BOP Diagram, Anticipated tops and surface plans attached.

This well is located outside the Secretary's Potash area and outside the R-111 Potash area. There are no potash leases within 1 mile of the location.

DISTRICT I
1825 N. French Dr., Hobbs, NM 88240
DISTRICT II
811 South First, Artesia, NM 88210
DISTRICT III
1000 Rio Brazos Rd., Artec, NM 87410
DISTRICT IV
2040 South Pacheco, Santa Fe, NM 87505

State of New Mexico
Energy, Minerals and Natural Resources Department

Form C-102
Revised March 17, 1999

Submit to Appropriate District Office
State Lease - 4 Copies
Fee Lease - 3 Copies

OIL CONSERVATION DIVISION

2040 South Pacheco
Santa Fe, New Mexico 87504-2088

☐ AMENDED REPORT

WELL LOCATION AND ACREAGE DEDICATION PLAT

API Number	Pool Code 47545	Pool Name NASH DRAW DELAWARE
Property Code 001796	Property Name POKER LAKE UNIT	Well Number 228
OGRID No. 001801	Operator Name BASS ENTERPRISES PRODUCTION COMPANY	Elevation 3180'

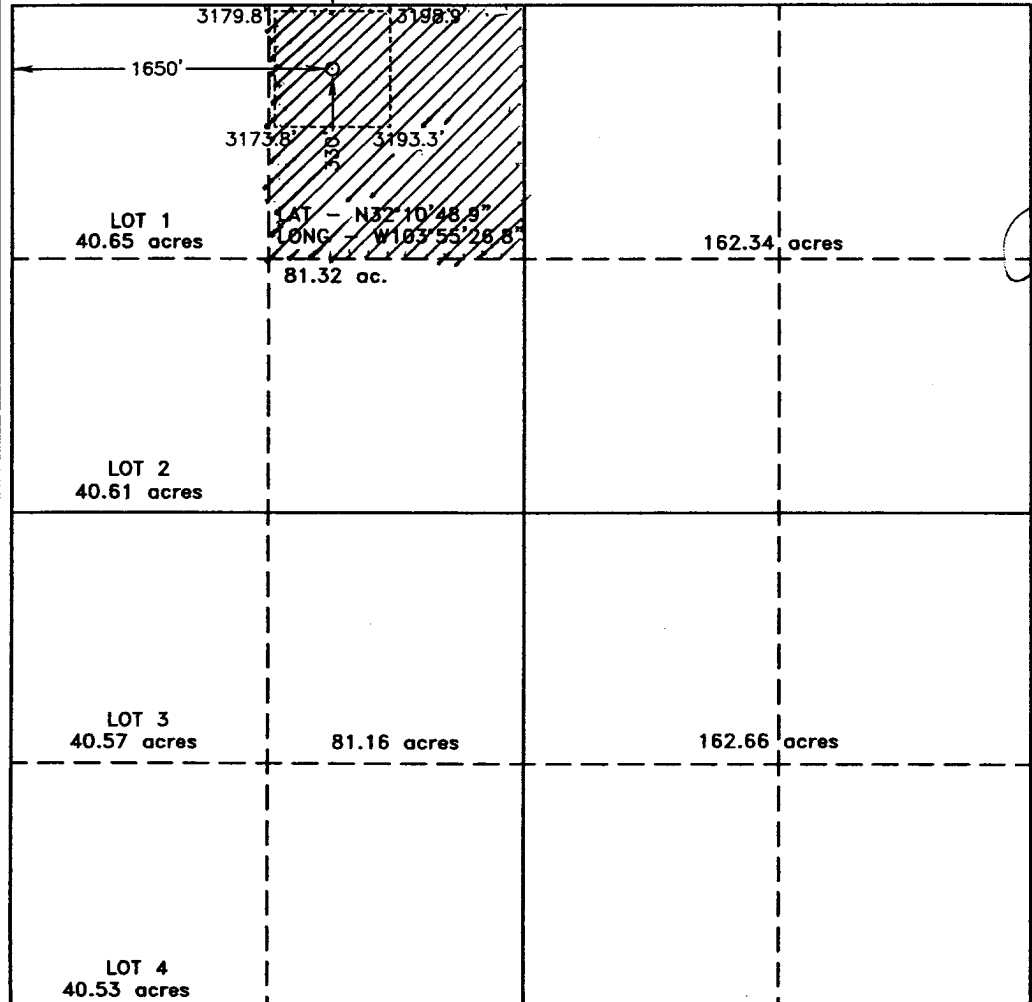
Surface Location

UL or lot No.	Section	Township	Range	Lot Idn	Feet from the	North/South line	Feet from the	East/West line	County
C	31	24 S	30 E		330	NORTH	1650	WEST	EDDY

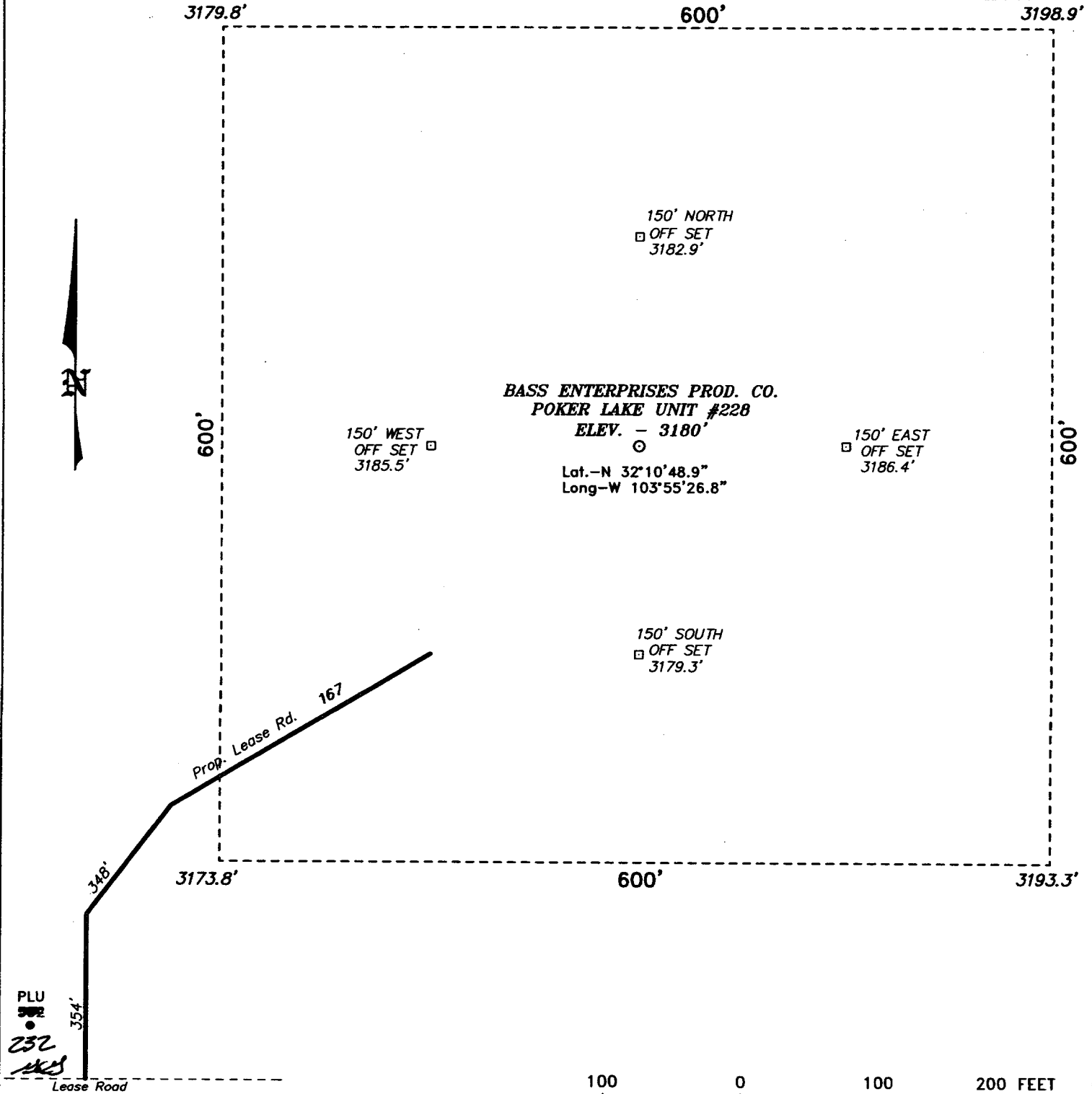
Bottom Hole Location If Different From Surface

UL or lot No.	Section	Township	Range	Lot Idn	Feet from the	North/South line	Feet from the	East/West line	County
Dedicated Acres 40	Joint or Infill N	Consolidation Code	Order No.						

NO ALLOWABLE WILL BE ASSIGNED TO THIS COMPLETION UNTIL ALL INTERESTS HAVE BEEN CONSOLIDATED
OR A NON-STANDARD UNIT HAS BEEN APPROVED BY THE DIVISION

	<p>OPERATOR CERTIFICATION</p> <p>I hereby certify the the information contained herein is true and complete to the best of my knowledge and belief.</p> <p><i>W.R. DANNELS</i> Signature W.R. DANNELS Printed Name DIVISION DRILLING SUPT. Title 6-21-05 Date</p> <p>SURVEYOR CERTIFICATION</p> <p>I hereby certify that the well location shown on this plat was plotted from field notes of actual surveys made by me or under my supervision, and that the same is true and correct to the best of my belief.</p> <p>JUNE 06 2005 Date Surveyed Signature & Seal of Professional Surveyor 7977 Certificate No. 5477 BASIN SURVEYS</p>
---	--

SECTION 31, TOWNSHIP 24 SOUTH, RANGE 30 EAST, N.M.P.M.,
EDDY COUNTY, NEW MEXICO.



DIRECTIONS TO LOCATION:

FROM THE JUNCTION OF CO. R. 793 AND STATE HWY 128, GO SOUTH ON 793 FOR APPROX. 4.0 MILES TO LEASE ROAD; THENCE EAST ON LEASE ROAD FOR 0.25 MILE; THENCE SOUTH 0.9 MILE; THENCE EAST 0.3 MILE; THENCE SOUTHERLY FOR APPROX. 5.0 MILES; THENCE WESTERLY FOR 1.2 MILE TO CO. RD. 748; THENCE SOUTHEASTERLY FOR APPROX. 2.1 MILES TO LEASE ROAD; THENCE WESTERLY FOR 0.5 MILE TO PROPOSED LEASE ROAD.

BASIN SURVEYS P.O. BOX 1786-HOBBS, NEW MEXICO

W.O. Number: 5477

Drawn By: K. GOAD

Date: 06-07-2005

Disk: KJG CD#7 - 5477A.DWG

BASS ENTERPRISES PRODUCTION CO.

REF: POKER LAKE UNIT No. 228 / Well Pad Topo

THE POKER LAKE UNIT No. 228 LOCATED 330' FROM
THE NORTH LINE AND 1650' FROM THE WEST LINE OF
SECTION 31, TOWNSHIP 24 SOUTH, RANGE 30 EAST,
N.M.P.M., EDDY COUNTY, NEW MEXICO.

Survey Date: 06-06-2005

Sheet 1 of 1 Sheets

**EIGHT POINT DRILLING PROGRAM
BASS ENTERPRISES PRODUCTION CO.**

NAME OF WELL: Poker Lake Unit #228

LEGAL DESCRIPTION - SURFACE: 330' FNL & 1650' FWL, Section 31, T-24-S, R-30-E, Eddy County, New Mexico.

POINT 1: ESTIMATED FORMATION TOPS

(See No. 2 Below)

POINT 2: WATER, OIL, GAS AND/OR MINERAL BEARING FORMATIONS

Anticipated Formation Tops: KB 3200' (est) GL 3180'

<u>FORMATION</u>	<u>ESTIMATED TOP FROM KB</u>	<u>ESTIMATED SUBSEA TOP</u>	<u>BEARING</u>
B/Rustler	470'	+2730'	Barren
T/Salt	500'	+2700'	Barren
T/Lamar	3425'	-225'	Oil/Gas
T/Bone Spring	7230'	-4030'	Oil/Gas
T/Avalon	7405'	-4205'	Oil/Gas
TD	7650'	-4450'	

POINT 3: CASING PROGRAM

<u>TYPE</u>	<u>INTERVALS</u>	<u>PURPOSE</u>	<u>CONDITION</u>
16"	0'- 40'	Conductor	Contractor Discretion
11-3/4", 42#, H-40, ST&C	0'- 490'	Surface	New
*8-5/8", 32#, J-55, LT&C	0'- 3425'	Intermediate	New
5-1/2", 15.5#, J-55, LT&C	0' -6300'	Production	New
5-1/2", 17#, J-55, LT&C	6300' -7650'	Production	New

*If there is no flowing sand or Loss Circulation this string will not be run.

POINT 4: PRESSURE CONTROL EQUIPMENT (SEE ATTACHED DIAGRAM)

A BOPE equivalent to requirements of Onshore Oil & Gas Order No. 2 – 2000 psi system (Diagram 1) will be nipped up on the surface casing head. The BOP stack, choke, kill lines, kelly cocks, inside BOP, etc. when installed on the surface casing head will be hydro-tested to 70% of internal yield pressure of casing or 1000 psig whichever is less with the rig pump. The BOPE when rigged up on the intermediate casing spool will be as described in Diagram 2 and will be tested to 3000 psig by independent tester. (As per Onshore Oil & Gas Order No 2 – 3000 psig system) In addition to the high pressure test, a low pressure (200 psig) test will be required. These tests will be performed: These tests will be performed:

- a) Upon installation
- b) After any component changes
- c) Fifteen days after a previous test
- d) As required by well conditions

A function test to insure that the preventers are operating correctly will be performed on each trip.

POINT 5: MUD PROGRAM

DEPTH	MUD TYPE	WEIGHT	FV	PV	YP	FL	Ph
0' - 490'	FW Spud Mud	8.5 - 9.2	38-70	NC	NC	NC	10.0
490' - 3425'	Brine Water	9.8 -10.2	28-30	NC	NC	NC	9.5 - 10.5**
3425' - 6000'	FW	8.8 - 9.2	30-34	NC	NC	NC	9.5 - 10.5**
6000' - 6300'	FW/Starch	8.8 - 9.2	30-34	8	2	<100 cc	9.5 - 10.5**
6300' - TD	FW/Starch	8.8 - 9.2	30-34	8	2	<25 cc	9.5 - 10.5**

**** If there is no intermediate casing set @ 3425', the drilling fluid will be 10 ppg BW to 5600' where it will be converted to BW/Diesel with properties as follows: 8.8 – 9 ppg, 32 – 40 funnel secs vis, YP2, PV 8, FL 25 cc or less, Ph 9.5 – 10.**

NOTE: May increase vis for logging purposes only.

POINT 6: TECHNICAL STAGES OF OPERATION

A) TESTING

None anticipated.

B) LOGGING

GR-CNL-LDT-AIT from TD to base of Salt (+/- 3300').
GR-CNL-CAL from base of Salt to surface.

C) CONVENTIONAL CORING

None anticipated.

D) CEMENT

INTERVAL	AMOUNT SXS	FT OF FILL	TYPE	GALS/SX	PPG	FT ³ /SX
SURFACE:						
Lead 0 – 290' (100% excess circ to surface)	200	290	Prem Plus + 2% CaCl ₂ + ½# Flocele	10.4	12.8	1.90
Tail 290' – 490' (100% excess circ to surface)	175	200	Prem Plus + 2% CaCl ₂	6.33	14.8	1.35
INTERMEDIATE:						
Lead 1000' – 3125' (200% excess)	750	2125	Interfill C	14.11	11.9	2.45
Tail 3125' – 3425' (200% excess)	200	300	Prem Plus + 2% CaCl ₂	6.37	14.8	1.35

PRODUCTION:

							Nitrogen	COMPRESSIVE Strength
Base Slurry w/nitrogen 2960-7650' (50% excess)	750	4690	Premium Plus + 2% Zone Sealant 2000	6.76	9.1-14.5	2.3-1.39	300/600 scf/bbl	1200

E) DIRECTIONAL DRILLING

No directional services anticipated.

POINT 7: ANTICIPATED RESERVOIR CONDITIONS

Normal pressures are anticipated throughout Delaware section. A BHP of 3285 psi (max) or MWE of 8.7 ppg is expected. Lost circulation may exist in the Delaware Section from 3425-7650'. No H₂S is anticipated.

POINT 8: OTHER PERTINENT INFORMATION**A) Auxiliary Equipment**

Upper and lower kelly cocks. Full opening stab in valve on the rig floor.

B) Anticipated Starting Date

Upon approval

12 days drilling operations

14 days completion operations

GEG/cdg
June 17, 2005

MULTI-POINT SURFACE USE PLAN

NAME OF WELL: Poker Lake Unit #228

LEGAL DESCRIPTION - SURFACE: 330 FNL & 1650' FWL, Section 31, T-24-S, R-30-E, Eddy County, New Mexico.

POINT 1: EXISTING ROADS

A) Proposed Well Site Location:

See Exhibit A and Survey Plats

B) Existing Roads:

From Carlsbad, New Mexico, go 8 miles south on Highway 285 to Highway 31. Turn north and go 7 miles on Highway 31. Turn east on Highway 128 and go 4 miles to Rawhide Road (located between mile markers 4 and 5). Turn southeast onto Rawhide Road and go approximately 14.0 miles southerly. Turn west for ½ mile to location on north side of lease road.

C) Existing Road Maintenance or Improvement Plan:

See Exhibit A,B and Survey Plats.

POINT 2: NEW PLANNED ACCESS ROUTE

A) Route Location:

See Exhibit A, B and Survey Plats. Proposed new road is approximately 869' in length.

B) Width

12' wide

C) Maximum Grade

Not applicable.

D) Turnout Ditches

Spaced per BLM requirements.

E) Culverts, Cattle Guards, and Surfacing Equipment

If required, culverts and cattle guards will be set per BLM Specs.

POINT 3: LOCATION OF EXISTING WELLS

Exhibits A,B & C indicates existing wells within the surrounding area.

POINT 12: OPERATOR'S FIELD REPRESENTATIVE

Page 6

(Field personnel responsible for compliance with development plan for surface use).

DRILLING

William R. Dannels
Box 2760
Midland, Texas 79702
(432) 683-2277

PRODUCTION

Mike Waygood
3104 East Green Street
Carlsbad, New Mexico 88220
(505) 887-7329

Kent A. Adams
Box 2760
Midland, Texas 79702
(432) 683-2277

POINT 13: CERTIFICATION

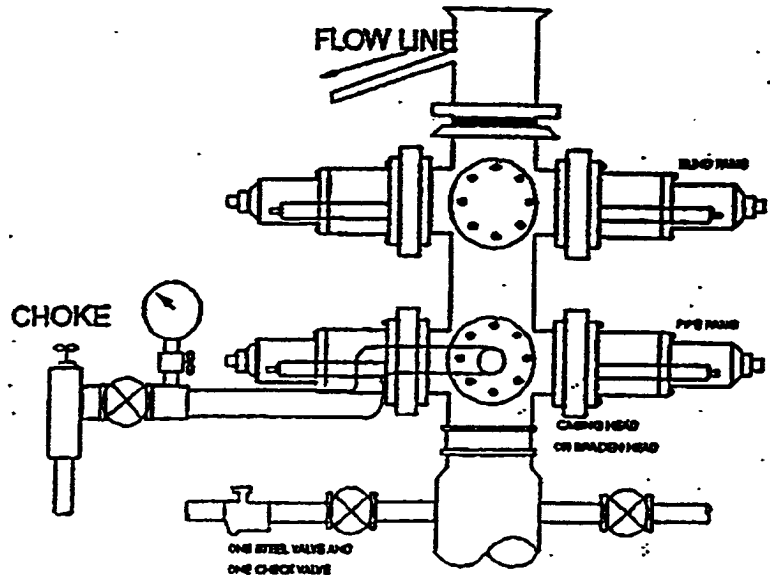
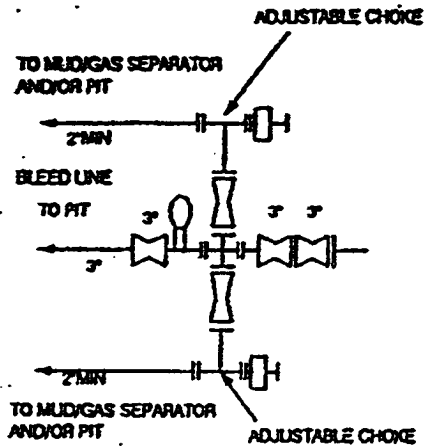
I hereby certify that I, or persons under my direct supervision have inspected the proposed drill site and access route; that I am familiar with the conditions which currently exist; that the statements made in the plan are, to the best of my knowledge, true and correct; and that the work associated with operations proposed herein will be performed by Bass Enterprises Production Co. and it's contractors and subcontractors in conformity with this plan and the terms and conditions under which it is approved. This statement is subject to the provisions of 18 U.S.C. 1001 for the filing of a false statement.

6-21-05
Date

William R. Dannels
William R. Dannels

GEG/cdg

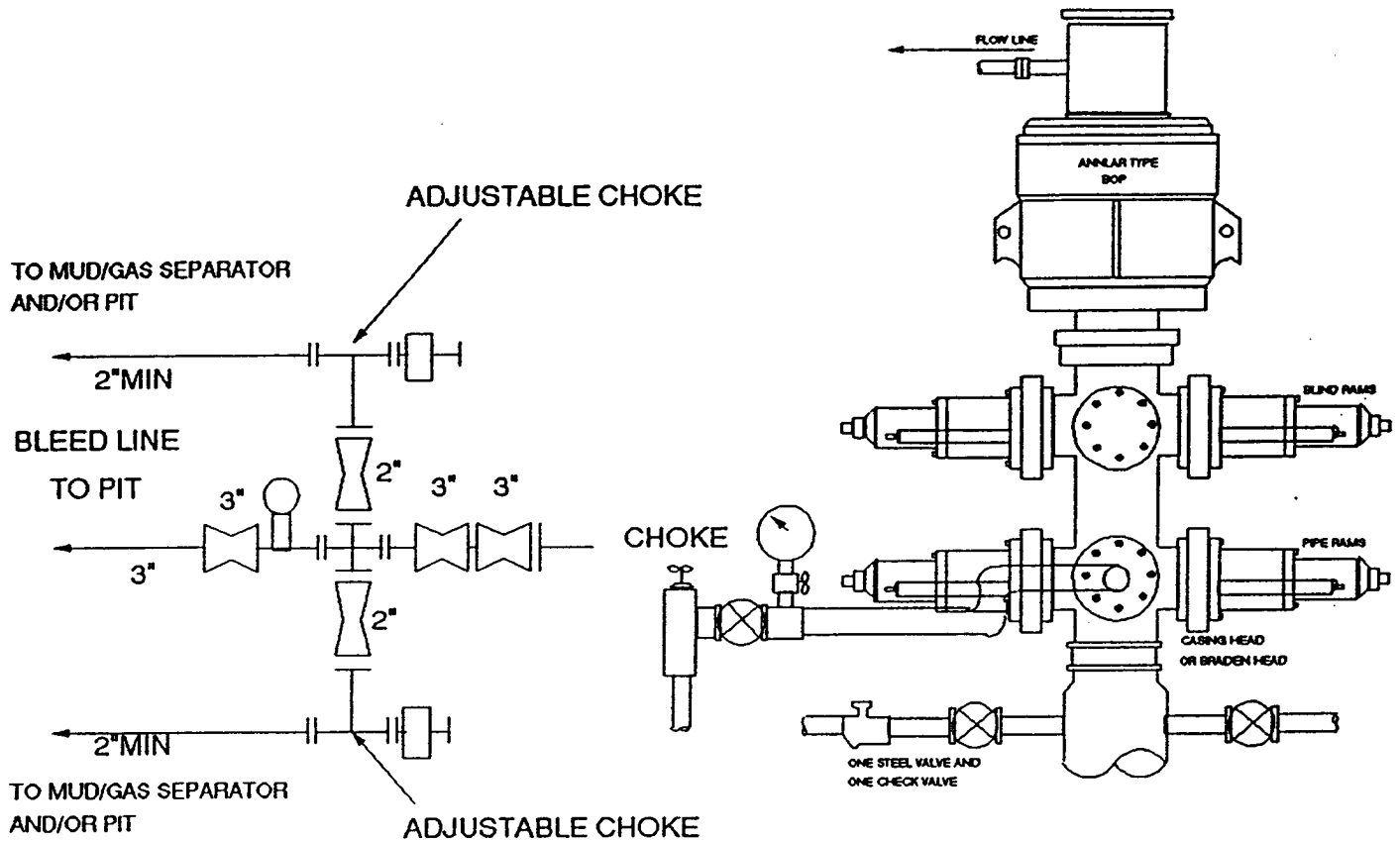
2000 PSI WP



THE FOLLOWING CONSTITUTE MINIMUM BLOWOUT PREVENTER REQUIREMENTS

- A. One double gate blowout preventer with lower rams for pipe and upper rams blind, all hydraulically controlled.
- B. Opening on preventers between rams to be flanged, studded or clamped and at least two inches in diameter.
- C. All connections from operating manifold to preventers to be all steel hose or tube a minimum of one inch in diameter.
- D. The available closing pressure shall be at least 15% in excess of that required with sufficient volume to operate (close, open, and re-close) the preventers.
- E. All connections to and from preventers to have a pressure rating equivalent to that of the BOP's.
- F. Manual controls to be installed before drilling cement plug.
- G. Valve to control flow through drill pipe to be located on rig floor.
- H. All chokes will be adjustable. Choke spool may be used between rams.

3000 PSI WP



THE FOLLOWING CONSTITUTE MINIMUM BLOWOUT PREVENTER REQUIREMENTS

- A. One double gate blowout preventer with lower rams for pipe and upper rams blind, all hydraulically controlled.
- B. Opening on preventers between rams to be flanged, studded or clamped and at least two inches in diameter.
- C. All connections from operating manifold to preventers to be all steel hose or tube a minimum of one inch in diameter.
- D. The available closing pressure shall be at least 15% in excess of that required with sufficient volume to operate (close, open, and re-close) the preventers.
- E. All connections to and from preventers to have a pressure rating equivalent to that of the BOP's.
- F. Manual controls to be installed before drilling cement plug.
- G. Valve to control flow through drill pipe to be located on rig floor.
- H. All chokes will be adjustable. Choke spool may be used between rams.

CONDITIONS OF APPROVAL - DRILLING

Operator's Name: Bass Enterprises Production Company
Well Name & No. Poker Lake Unit #228
Location: 330' FNL, 1650' FWL, Section 31, T. 24 S., R. 30 E., Eddy County, New Mexico
Lease: LC-069627-A

I. DRILLING OPERATIONS REQUIREMENTS:

1. The Bureau of Land Management (BLM) is to be notified at the Carlsbad Field Office, 620 East Greene St., Carlsbad, NM 88220, (505) 361-2822 for wells in Eddy County in sufficient time for a representative to witness:
 - A. Well spud
 - B. Cementing casing: 11-3/4 inch 8-5/8 inch (if needed) 5-1/2 inch
 - C. BOP tests
2. Unless the production casing has been run and cemented or the well has been properly plugged, the drilling rig shall not be removed from over the hole without prior approval.
3. Submit a Sundry Notice (Form 3160-5, one original and five copies) for each casing string, describing the casing and cementing operations. Include pertinent information such as; spud date, hole size, casing (size, weight, grade and thread type), cement (type, quantity and top), water zones and problems or hazards encountered. The Sundry shall be submitted within 15 days of completion of each casing string. The reports may be combined into the same Sundry if they fall within the same 15 day time frame.
4. The API No. assigned to the well by NMOCD shall be included on the subsequent report of setting the first casing string.

II. CASING:

1. The 11-3/4 inch surface casing shall be set at approximately 490 feet and cement circulated to the surface. If cement does not circulate to the surface the appropriate BLM office shall be notified and a temperature survey or cement bond log shall be run to verify the top of the cement. Remedial cementing shall be completed prior to drilling out that string.
2. The 8-5/8 inch intermediate casing (if needed) shall be set at approximately 3425 feet and cement circulated to the surface. If cement does not circulate to the surface the appropriate BLM office shall be notified and a temperature survey or cement bond log shall be run to verify the top of the cement. Remedial cementing shall be completed prior to drilling out that string.
3. The minimum required fill of cement behind the 5-1/2 inch production casing is to be sufficient to reach at least 500 feet above the top of the uppermost productive hydrocarbon bearing interval.

III. PRESSURE CONTROL:

1. All BOP systems and related equipment shall comply with well control requirements as described in Onshore Oil and Gas Order No. 2. The BOP and related equipment shall be installed and operational before drilling below the 8-5/8 inch casing shoe and shall be tested as described in Onshore Order No. 2. Any equipment failing to test satisfactorily shall be repaired or replaced.
2. Minimum working pressure of the blowout preventer and related equipment (BOPE) shall be 2000 psi. Surface casing may be tested with the rig pumps.
3. The appropriate BLM office shall be notified in sufficient time for a representative to witness the tests.
 - The results of the test shall be reported to the appropriate BLM office.
 - Testing fluid must be water or an appropriate clear liquid suitable for sub-freezing temperatures. Use of drilling mud for testing is not permitted since it can mask small leaks.
 - Testing must be done in a safe workman-like manner. Hard line connections shall be required.