

District I  
1625 N French Dr., Hobbs, NM 88240  
Phone: (575) 393-6161 Fax: (575) 393-0720  
District II  
811 S. First St., Artesia, NM 88210  
Phone: (575) 748-1283 Fax: (575) 748-9720  
District III  
1000 Rio Brazos Road, Aztec, NM 87410  
Phone: (505) 334-6178 Fax: (505) 334-6170  
District IV  
1220 S. St. Francis Dr., Santa Fe, NM 87505  
Phone: (505) 476-3460 Fax: (505) 476-3462

State of New Mexico  
Energy, Minerals & Natural Resources  
Department  
OIL CONSERVATION DIVISION  
1220 South St. Francis Dr.  
Santa Fe, NM 87505

FORM C-102  
Revised August 1, 2011  
Submit one copy to appropriate  
District Office  
 AMENDED REPORT

WELL LOCATION AND ACREAGE DEDICATION PLAT

<sup>1</sup> API Number 30-025-46335	<sup>2</sup> Pool Code 96228	<sup>3</sup> Pool Name PRONGHORN;BONE SPRING
<sup>4</sup> Property Code 326002	<sup>5</sup> Property Name RODNEY ROBINSON FEDERAL	
<sup>7</sup> OGRID No. 228937	<sup>8</sup> Operator Name MATADOR PRODUCTION COMPANY	<sup>6</sup> Well Number 122H <sup>9</sup> Elevation 3732'

<sup>10</sup>Surface Location

UL or lot no.	Section	Township	Range	Lot Idn	Feet from the	North/South line	Feet from the	East/West line	County
3	6	23-S	33-E	-	240'	NORTH	1927'	WEST	LEA

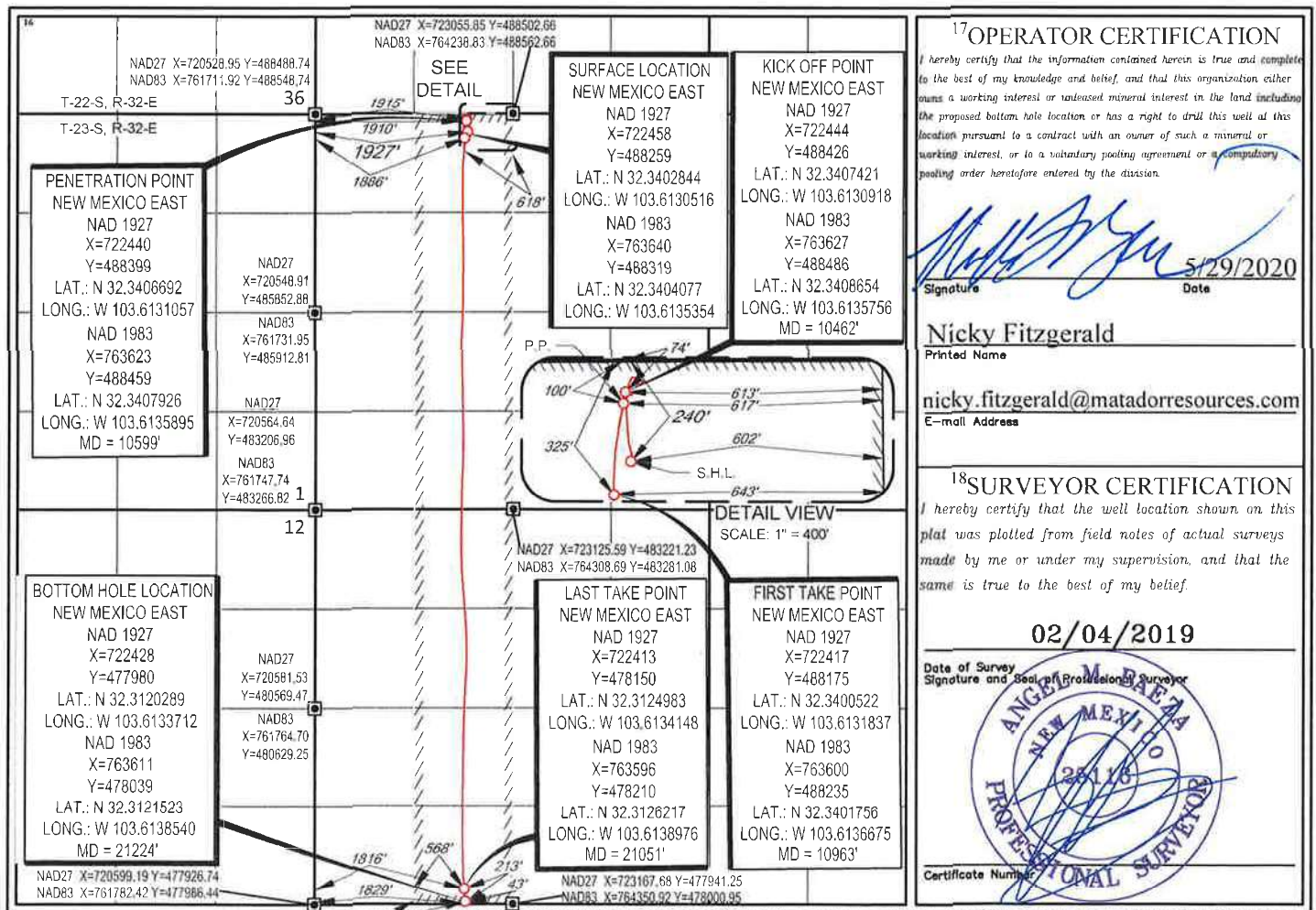
<sup>11</sup>Bottom Hole Location If Different From Surface

UL or lot no.	Section	Township	Range	Lot Idn	Feet from the	North/South line	Feet from the	East/West line	County
N	7	23-S	33-E	-	43'	SOUTH	1829'	WEST	LEA

<sup>12</sup> Dedicated Acres 320.03	<sup>13</sup> Joint or Infill	<sup>14</sup> Consolidation Code	<sup>15</sup> Order No.
---	-------------------------------	----------------------------------	-------------------------

No allowable will be assigned to this completion until all interests have been consolidated or a non-standard unit has been approved by the division.

SL ✓





SECTION 6, TOWNSHIP 23-S, RANGE 33-E, N.M.P.M.  
LEA COUNTY, NEW MEXICO



**PENETRATION POINT**  
NEW MEXICO EAST  
NAD 1927  
X=722440  
Y=488399  
LAT.: N 32.3406692  
LONG.: W 103.6131057  
NAD 1983  
X=763623  
Y=488459  
LAT.: N 32.3407926  
LONG.: W 103.6135895  
MD = 10599'

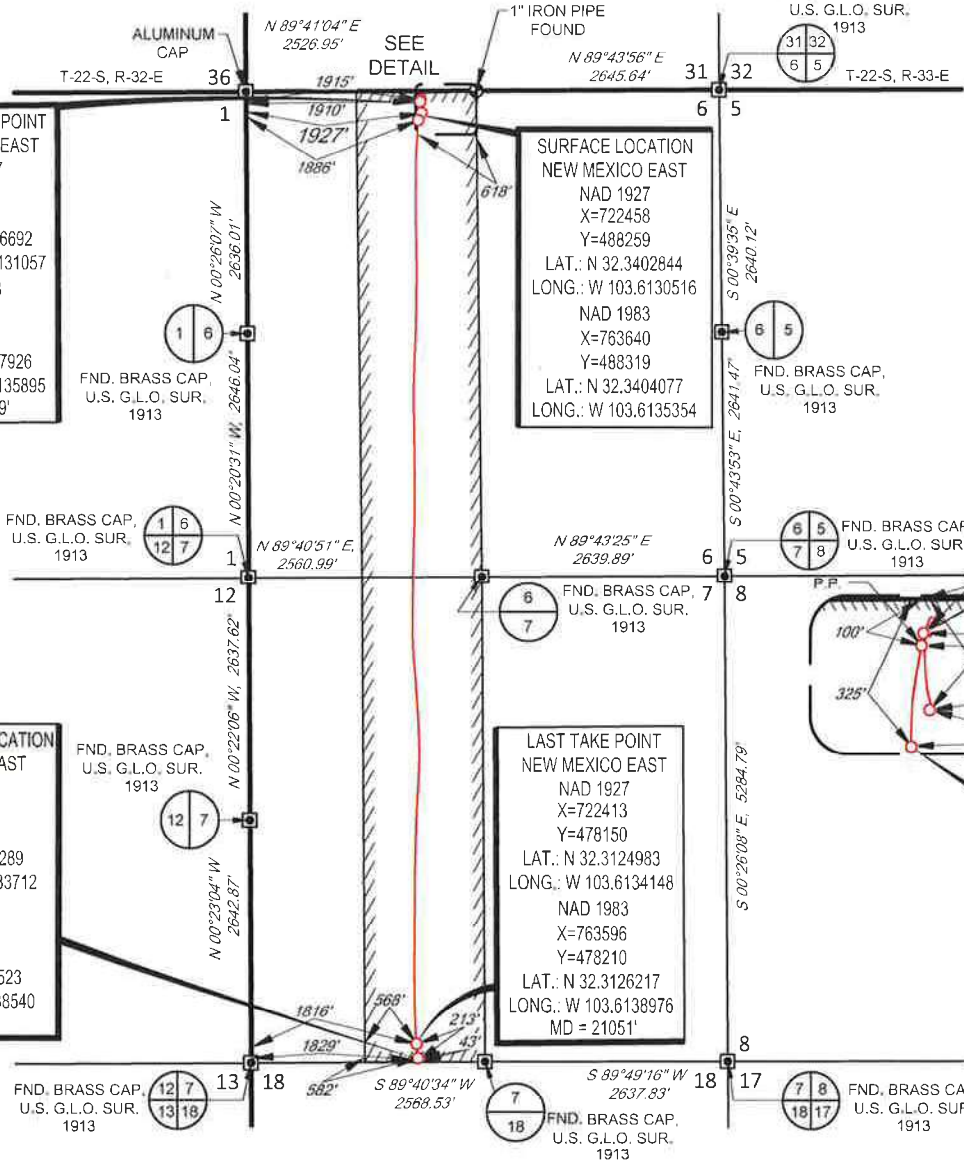
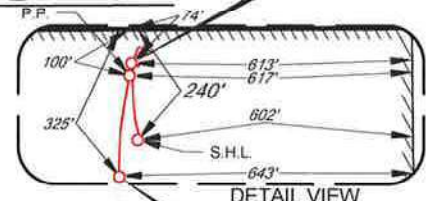
**SURFACE LOCATION**  
NEW MEXICO EAST  
NAD 1927  
X=722458  
Y=488259  
LAT.: N 32.3402844  
LONG.: W 103.6130516  
NAD 1983  
X=763640  
Y=488319  
LAT.: N 32.3404077  
LONG.: W 103.6135354

**KICK OFF POINT**  
NEW MEXICO EAST  
NAD 1927  
X=722444  
Y=488426  
LAT.: N 32.3407421  
LONG.: W 103.6130918  
NAD 1983  
X=763627  
Y=488486  
LAT.: N 32.3408654  
LONG.: W 103.6135756  
MD = 10462'

**BOTTOM HOLE LOCATION**  
NEW MEXICO EAST  
NAD 1927  
X=722428  
Y=477980  
LAT.: N 32.3120289  
LONG.: W 103.6133712  
NAD 1983  
X=763611  
Y=478039  
LAT.: N 32.3121523  
LONG.: W 103.6138540  
MD = 21224'

**LAST TAKE POINT**  
NEW MEXICO EAST  
NAD 1927  
X=722413  
Y=478150  
LAT.: N 32.3124983  
LONG.: W 103.6134148  
NAD 1983  
X=763596  
Y=478210  
LAT.: N 32.3126217  
LONG.: W 103.6138976  
MD = 21051'

**FIRST TAKE POINT**  
NEW MEXICO EAST  
NAD 1927  
X=722417  
Y=488175  
LAT.: N 32.3400522  
LONG.: W 103.6131837  
NAD 1983  
X=763600  
Y=488235  
LAT.: N 32.3401756  
LONG.: W 103.6136675  
MD = 10963'



LEASE NAME & WELL NO.: RODNEY ROBINSON FEDERAL 122H  
SECTION 6 TWP 23-S RGE 33-E SURVEY N.M.P.M.  
COUNTY LEA STATE NM ELEVATION 3732'  
DESCRIPTION 1927' FWL & 240' FNL



Angel M. Baeza, P.S. No. 25116  
MAY 27, 2020



**TOPOGRAPHIC**  
LOYALTY INNOVATION LEGACY  
1400 EVERMAN PARKWAY, Ste. 146 • FT. WORTH, TEXAS 76140  
TELEPHONE: (817) 744-7512 • FAX (817) 744-7554  
2903 NORTH BIG SPRING • MIDLAND, TEXAS 79705  
TELEPHONE: (432) 682-1653 OR (800) 767-1653 • FAX (432) 682-1743  
WWW.TOPOGRAPHIC.COM

RODNEY ROBINSON FEDERAL 122H AS-COMPLETED	REVISION:	
	INT	DATE
DATE: 5/27/2020		
AD_RODNEY_ROBINSON_FEDERAL_122H		
DRAWN BY: JDR		
SHEET: 1 OF 1		

NOTES:  
1. ORIGINAL DOCUMENT SIZE: 8.5" X 11"  
2. ALL BEARINGS, DISTANCES, AND COORDINATE VALUES CONTAINED HEREIN ARE GRID BASED UPON THE NEW MEXICO STATE PLANE COORDINATE SYSTEM, EAST ZONE, U.S. SURVEY FEET, NORTH AMERICAN DATUM 1983.  
3. CERTIFICATION IS MADE ONLY TO THE LOCATION OF THIS EASEMENT, IN RELATION TO THE EVIDENCE FOUND DURING A FIELD SURVEY. MADE ON THE GROUND, UNDER MY SUPERVISION, AND USING DOCUMENTATION PROVIDED BY MATADOR PRODUCTION COMPANY. ONLY UTILITIES/EASEMENTS THAT WERE VISIBLE ON THE DATE OF THIS SURVEY, WITHIN/ADJOINING THIS EASEMENT, HAVE BEEN LOCATED AS SHOWN HEREON OF WHICH I HAVE KNOWLEDGE. THIS CERTIFICATION IS LIMITED TO THOSE PERSONS OR ENTITIES SHOWN ON THE FACE OF THIS PLAT AND IS NON-TRANSFERABLE, AND MADE FOR THIS TRANSACTION ONLY.