

HOBBS OCD

DISTRICT I

1625 N. French Dr., Hobbs, NM 88240

DISTRICT II

1301 W. Grand Avenue, Artesia, NM 88210

DISTRICT III

1000 Rio Brazos Rd., Aztec, NM 87410

DISTRICT IV

1220 S. St. Francis Dr., Santa Fe, NM 87505

AUG 17 2011

State of New Mexico
Energy, Minerals and Natural Resources DepartmentForm C-102
Revised July 16, 2010Submit one copy to appropriate
District OfficeRECEIVED OIL CONSERVATION DIVISION
1220 South St. Francis Dr.
Santa Fe, New Mexico 87505

WELL LOCATION AND ACREAGE DEDICATION PLAT

☐ AMENDED REPORT

API Number 30-025-40262	Pool Code 78760	Pool Name House; Tubb
Property Code 303220	Property Name L&M	Well Number 8
OGRID No. 873	Operator Name APACHE CORPORATION	Elevation 3438'

Surface Location

UL or lot No.	Section	Township	Range	Lot Idn	Feet from the	North/South line	Feet from the	East/West line	County
N	2	20 S	38 E		330	SOUTH	2310	WEST	LEA

Bottom Hole Location If Different From Surface

UL or lot No.	Section	Township	Range	Lot Idn	Feet from the	North/South line	Feet from the	East/West line	County

Dedicated Acres 40	Joint or Infill	Consolidation Code	Order No.
------------------------------	-----------------	--------------------	-----------

NO ALLOWABLE WILL BE ASSIGNED TO THIS COMPLETION UNTIL ALL INTERESTS HAVE BEEN CONSOLIDATED
OR A NON-STANDARD UNIT HAS BEEN APPROVED BY THE DIVISION

	<p>SURFACE LOCATION Lat - N 32°35'45.03" Long - W 103°07'13.26" NMSPCE- N 582628.790 E 914907.661 (NAD-83)</p> <p>SURFACE LOCATION Lat - N 32°35'44.62" Long - W 103°07'11.54" NMSPCE- N 582569.731 E 873725.667 (NAD-27)</p> <p>32.595728 103.119872</p>	<p>OPERATOR CERTIFICATION I hereby certify that the information contained herein is true and complete to the best of my knowledge and belief, and that this organization either owns a working interest or unleased mineral interest in the land including the proposed bottom hole location or has a right to drill this well at this location pursuant to a contract with an owner of such a mineral or working interest, or to a voluntary pooling agreement or a compulsory pooling order heretofore entered by the division.</p> <p><i>Sorina L. Flores</i> 8/15/11 Signature Date Sorina L. Flores Printed Name sorina.flores@apachecorp.com Email Address</p>
	<p>SURVEYOR CERTIFICATION I hereby certify that the well location shown on this plat was plotted from field notes of actual surveys made by me or under my supervision, and that the same is true and correct to the best of my belief</p> <p>GARY L. JONES Date Surveyed GARY L. JONES Signature & Seal of Professional Surveyor</p>	<p>Certificate No. Gary L. Jones 7977</p> <p>BASIN SURVEYS 24999</p>

DISTRICT I
1625 N. French Dr., Hobbs, NM 88240

DISTRICT II
1301 W. Grand Avenue, Artesia, NM 88210

DISTRICT III
1000 Rio Brazos Rd., Aztec, NM 87410

DISTRICT IV
1220 S. St. Francis Dr., Santa Fe, NM 87505

State of New Mexico
Energy, Minerals and Natural Resources Department

Form C-102
Revised July 16, 2010

Submit one copy to appropriate
District Office

OIL CONSERVATION DIVISION

1220 South St. Francis Dr.
Santa Fe, New Mexico 87505

WELL LOCATION AND ACREAGE DEDICATION PLAT

☐ AMENDED REPORT

API Number 30-025-40262	Pool Code 33250	Pool Name House; Drinkard
Property Code 303220	Property Name L&M	Well Number 8
OGRID No. 873	Operator Name APACHE CORPORATION	Elevation 3438'

Surface Location

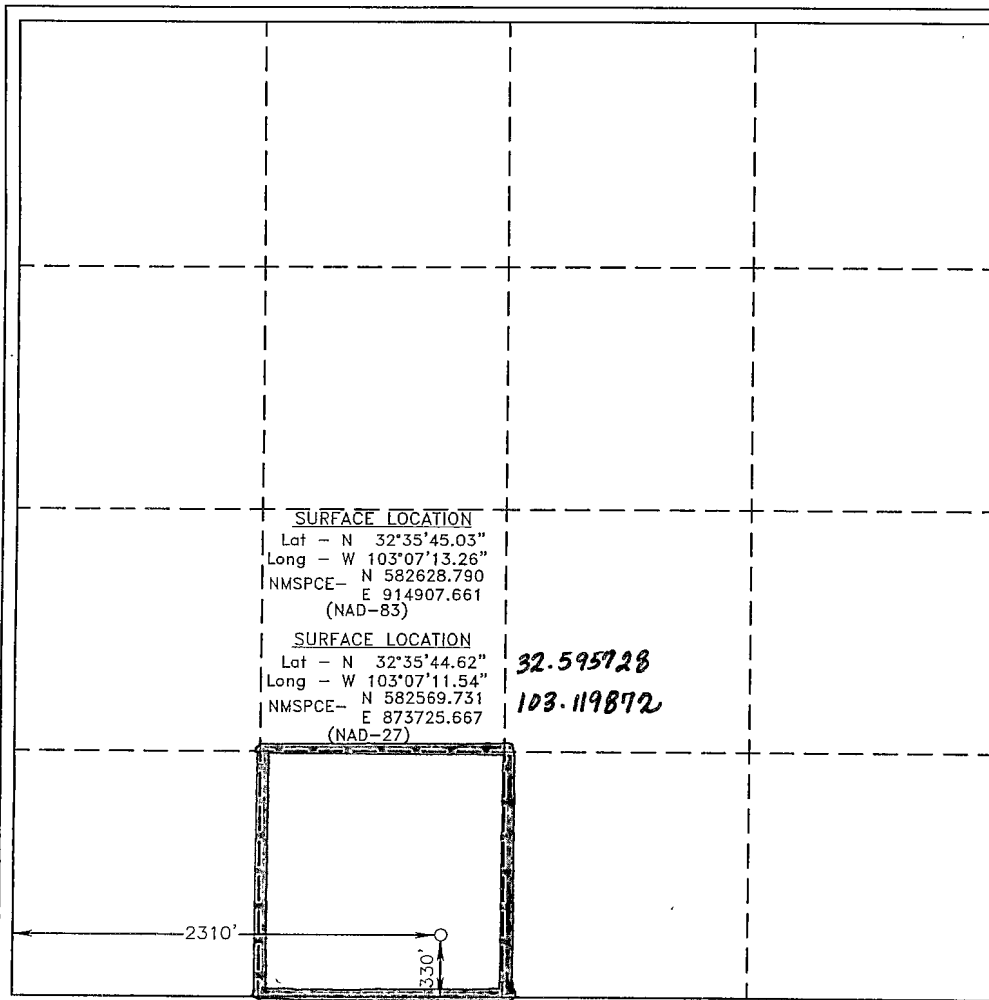
UL or lot No.	Section	Township	Range	Lot Idn	Feet from the	North/South line	Feet from the	East/West line	County
N	2	20 S	38 E		330	SOUTH	2310	WEST	LEA

Bottom Hole Location If Different From Surface

UL or lot No.	Section	Township	Range	Lot Idn	Feet from the	North/South line	Feet from the	East/West line	County

Dedicated Acres 40	Joint or Infill	Consolidation Code	Order No.
------------------------------	-----------------	--------------------	-----------

NO ALLOWABLE WILL BE ASSIGNED TO THIS COMPLETION UNTIL ALL INTERESTS HAVE BEEN CONSOLIDATED
OR A NON-STANDARD UNIT HAS BEEN APPROVED BY THE DIVISION



OPERATOR CERTIFICATION

I hereby certify that the information contained herein is true and complete to the best of my knowledge and belief, and that this organization either owns a working interest or unleased mineral interest in the land including the proposed bottom hole location or has a right to drill this well at this location pursuant to a contract with an owner of such a mineral or working interest, or to a voluntary pooling agreement or a compulsory pooling order heretofore entered by the division.

Sorina L. Flores 8/15/11
Signature Date

Sorina L. Flores
Printed Name

sorina.flores@apachecorp.com
Email Address

SURVEYOR CERTIFICATION

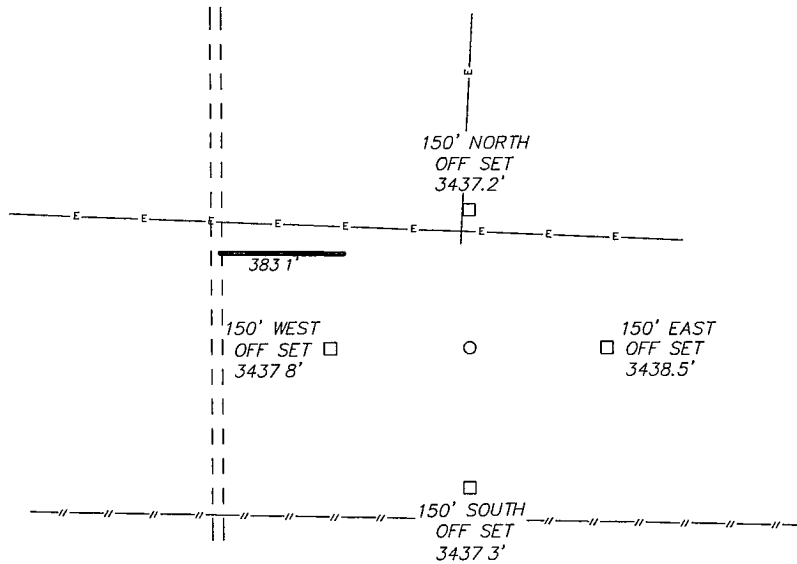
I hereby certify that the well location shown on this plat was plotted from field notes of actual surveys made by me or under my supervision and that the same is true and correct to the best of my belief.

GARY L. JONES
20, 2011
NEW MEXICO
Professional Surveyor
Date Surveyed
Signature & Seal of
Professional Surveyor

Certificate No. Gary L. Jones 7977

BASIN SURVEYS 24999

SECTION 2, TOWNSHIP 20 SOUTH, RANGE 38 EAST, N.M.P.M.,
LEA COUNTY, NEW MEXICO.



APACHE CORPORATION
L&M #8
ELEV. - 3438'

Lat - N 32°35'45.03"
Long - W 103°07'13.26"
NMSPCE- N 582628.790
E 914907.661
(NAD-83)

Lat - N 32°35'44.62"
Long - W 103°07'11.54"
NMSPCE- N 582569.731
E 873725.667
(NAD-27)

200 0 200 400 FEET
SCALE: 1" = 200'

Directions to Location:

FROM THE JUNCTION OF STARLITE AND THE EUNICE
HWY, TO EAST ON STARLITE FOR 0.3 MILES TO
LEASE ROAD, ON LEASE ROAD GO NORTH 0.2 MILES
TO PROPOSED LEASE ROAD.

BASIN SURVEYS P.O. BOX 1786 - HOBBS, NEW MEXICO

W.O. Number: 24999 Drawn By: J. SMALL

Date: 08-06-2011 Disk: JMS 24999

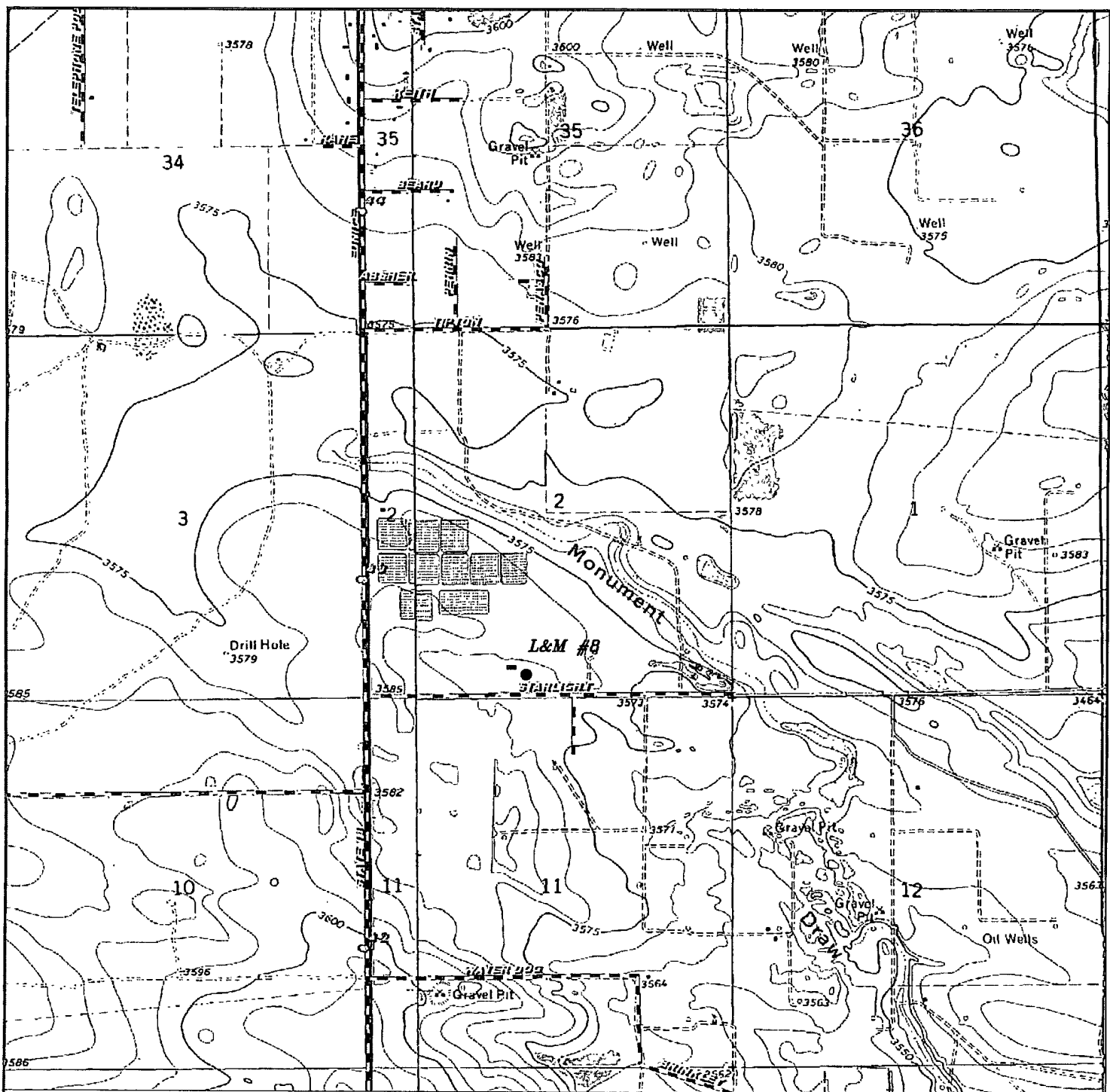
APACHE CORPORATION

REF: L&M #5 / WELL PAD TOPO

THE L&M #8 LOCATED 330'

FROM THE SOUTH LINE AND 2310' FROM THE WEST LINE OF
SECTION 2, TOWNSHIP 20 SOUTH, RANGE 38 EAST,
N.M.P.M., LEA COUNTY, NEW MEXICO.

Survey Date: 07-26-2011 Sheet 1 of 1 Sheets



L&M #8

Located 330' FSL and 2310' FWL
 Section 2, Township 20 South, Range 38 East,
 N.M.P.M., Lea County, New Mexico.

basin
surveys

focused on excellence
 in the oilfield

P.O. Box 1786
 1120 N. West County Rd.
 Hobbs, New Mexico 88241
 (575) 393-7316 - Office
 (575) 392-2206 - Fax
 basinsurveys.com

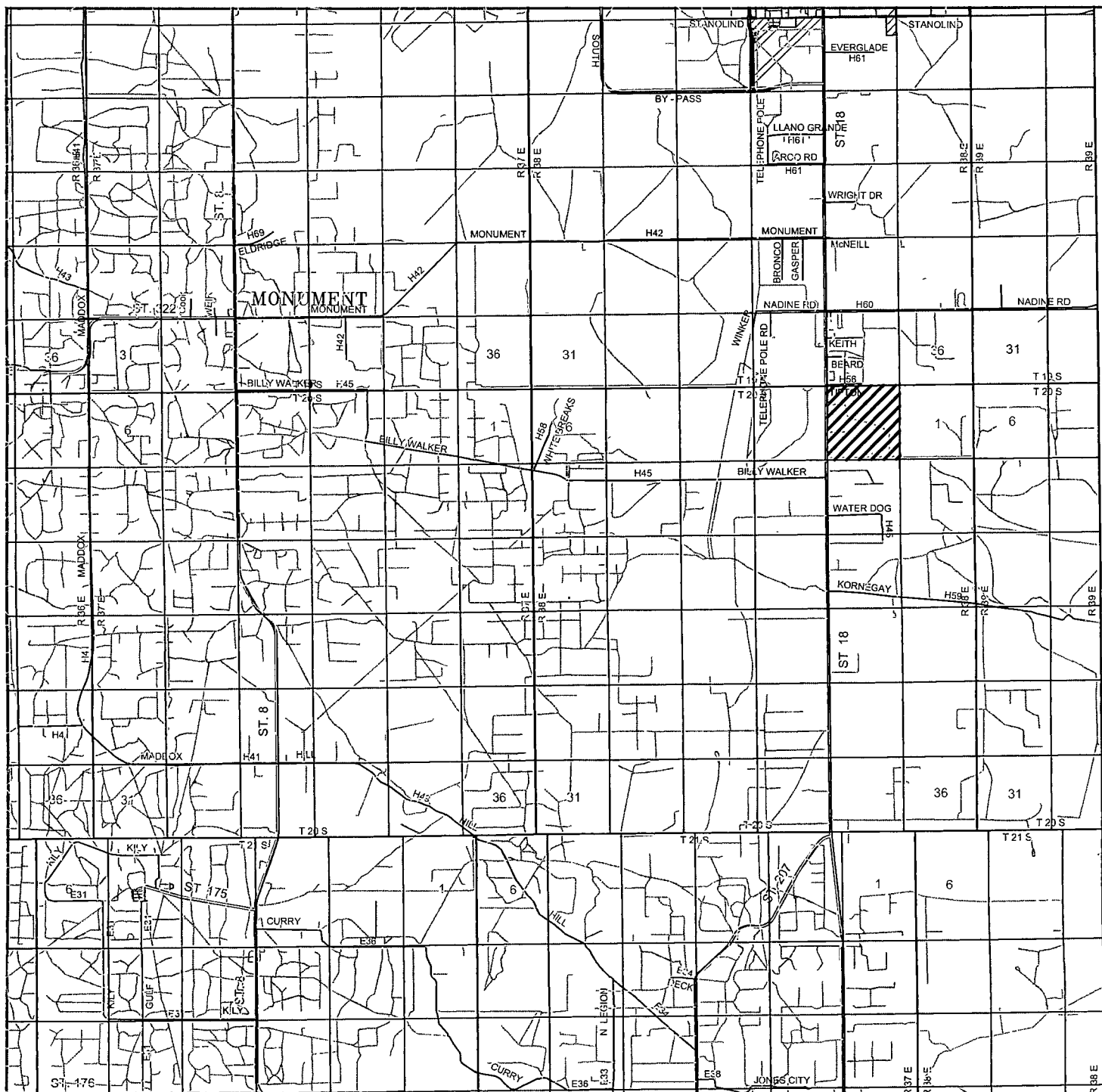
W.O. Number: JMS 24999

Survey Date: 07-26-2011

Scale: 1" = 2000'

Date: 08-06-2011

APACHE
CORPORATION



L&M #8

Located 330' FSL and 2310' FWL

Section 2, Township 20 South, Range 38 East,
N.M.P.M., Lea County, New Mexico.

**basin
surveys**
focused on excellence
in the oilfield

P.O. Box 1786
1120 N. West County Rd.
Hobbs, New Mexico 88241
(575) 393-7316 - Office
(575) 392-2206 - Fax
basinsurveys.com

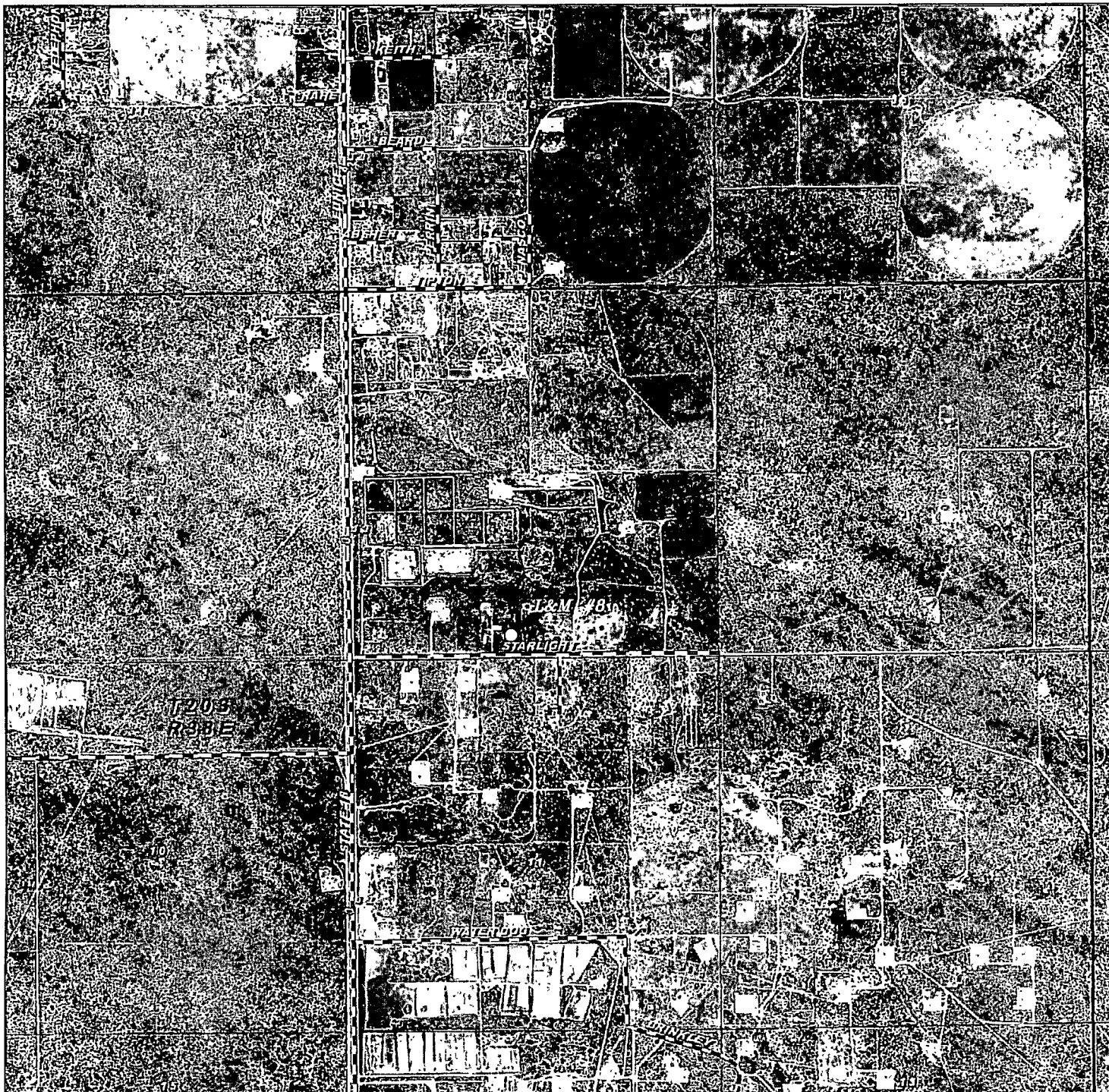
W.O. Number: JMS 24999

Survey Date: 07-26-2011

Scale: 1" = 2 Miles

Date: 08-06-2011

**APACHE
CORPORATION**



L&M #8

Located 330' FSL and 2310' FWL

Section 2, Township 20 South, Range 38 East,
N.M.P.M., Lea County, New Mexico.

**basin
surveys**
focused on excellence
in the oilfield

P.O. Box 1786
1120 N. West County Rd.
Hobbs, New Mexico 88241
(575) 393-7316 - Office
(575) 392-2206 - Fax
basinsurveys.com

W.O. Number: JMS 24999

Scale: 1" = 2000'

YELLOW TINT - USA LAND
BLUE TINT - STATE LAND
NATURAL COLOR - FEE LAND

**APACHE
CORPORATION**