

District I
1625 N French Dr., Hobbs, NM 88240
District II
1301 W. Grand Avenue, Artesia, NM 88210
District III
1000 Rio Brazos Rd., Aztec, NM 87410
District IV
1220 S St. Francis Dr., Santa Fe, NM 87505

State of New Mexico
Energy, Minerals & Natural Resources Department
OIL CONSERVATION DIVISION
1220 South St. Francis Dr.
Santa Fe, NM 87505

Form C-402
Revised October 12, 2005
Submit to Appropriate District Office
State Lease- 4 Copies
Fee Lease- 3 Copies

HOBBS OCD

DEC 12 2011

☐ AMENDED REPORT

WELL LOCATION AND ACREAGE DEDICATION PLAT

API Number 30-015-11166	Pool Code 33820	Well Name JALMAT; TAN-YATES-7 RVRS (OIL)
Property Code	Property Name COOPER JAL UNIT	Well Number 147
OGRID No 263848	Operator Name RESACA OPERATING CO.	Elevation 3294.4'

Surface Location

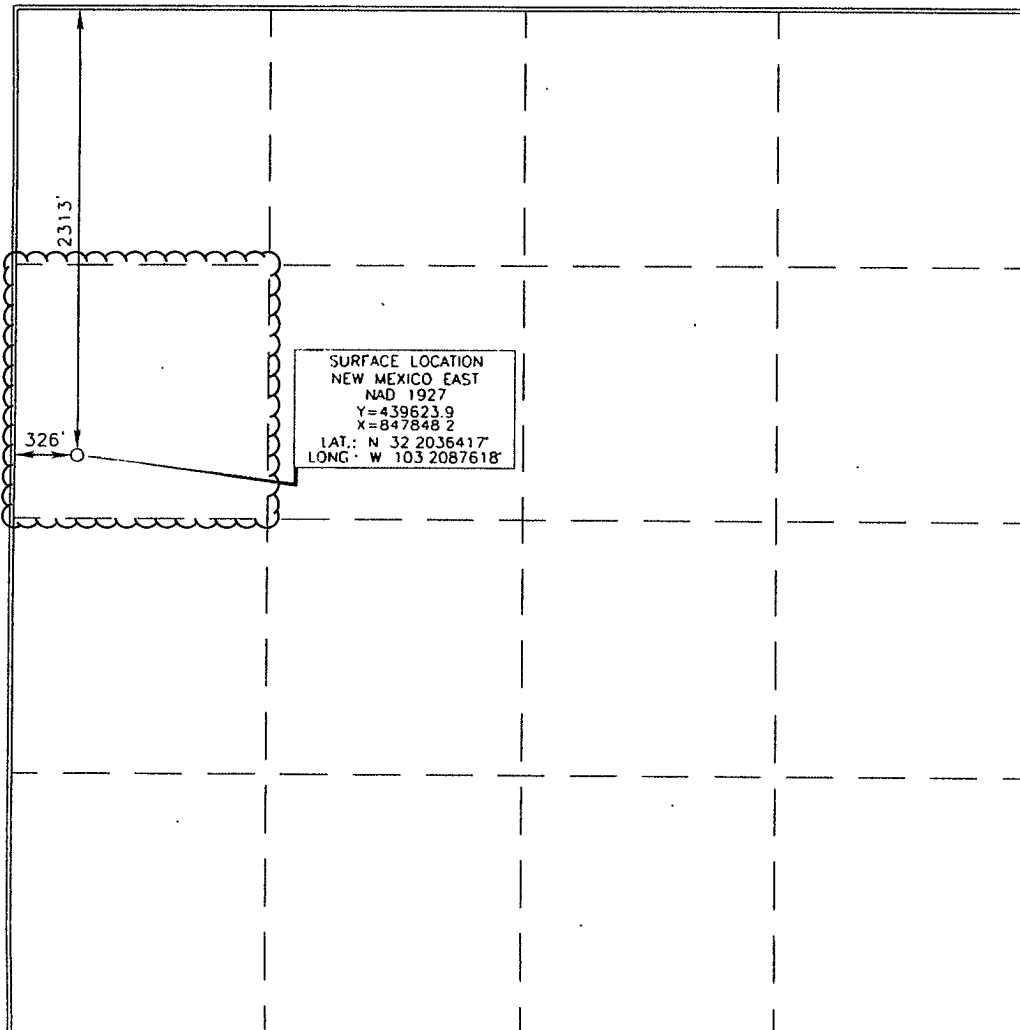
UL or lot no. E2	Section 19	Township 24 SOUTH	Range 37 EAST, N.M.P.M.	Lot Idn	Feet from the	North/South line	Feet from the	East/West line	County
					2313'	NORTH	326'	WEST	LEA

Oil operator ☒

Bottom Hole Location If Different From Surface

UL or lot no.	Section	Township	Range	Lot Idn	Feet from the	North/South line	Feet from the	East/West line	County
Dedicated Acres 38.10	Joint or Infill	Consolidation Code	Order No.						

No allowable will be assigned to this completion until all interests have been consolidated or a non-standard unit has been approved by the division.



OPERATOR CERTIFICATION

I hereby certify that the information contained herein is true and complete to the best of my knowledge and belief, and that this organization either owns a working interest or unleased mineral interest in the land including the proposed bottom hole location or has a right to drill this well at this location pursuant to a contract with an owner of such a mineral or working interest, or to a voluntary pooling agreement or a compulsory pooling order heretofore entered by the division

Brian Wood 7-25-11
Signature Date

BRIAN WOOD

Printed Name

SURVEYOR CERTIFICATION

I hereby certify that the well location shown on this plat was plotted from field notes of actual surveys made by me or under my supervision, and that the same is true and correct to the best of my belief.

Terry J. Abel 4/25/2011
Date of Survey Certificate Number 15079
Signature and Seal of Professional Surveyor
TERRY J. ABEL
15079
APRIL 11, 2011
NEW MEXICO
SURVEYOR

WO# 110411WL-g (KA)

DEC 13 2011