

DISTRICT I  
1625 N FRENCH DR., HOBBS, NM 88240  
DISTRICT II  
1301 W. GRAND AVENUE, ARTESIA, NM 88210  
DISTRICT III  
1000 RIO BRAZOS RD., AZTEC, NM 87410  
DISTRICT IV  
11885 S. ST FRANCIS DR., SANTA FE, NM 87505

HOBBS OCD

FEB 29 2012

RECEIVED

State of New Mexico  
Energy, Minerals & Natural Resources Department  
OIL CONSERVATION DIVISION  
1220 South St. Francis Dr.  
Santa Fe, New Mexico 87505

Form C-102  
Revised July 16, 2010  
Submit to Appropriate  
District Office

AMENDED REPORT

WELL LOCATION AND ACREAGE DEDICATION PLAT

API Number 30-025-40466	Pool Code 61280	Pool Name Vacuum Grayburg San Andres
Property Code 29923	Property Name C.V.U.	Well Number 274
OGRID No. 4323	Operator Name CHEVRON USA INC.	Elevation 3975'

Surface Location

UL or lot No.	Section	Township	Range	Lot Idn	Feet from the	North/South line	Feet from the	East/West line	County
E	31	17-S	35-E		2033'	NORTH	1187'	WEST	LEA

Bottom Hole Location If Different From Surface

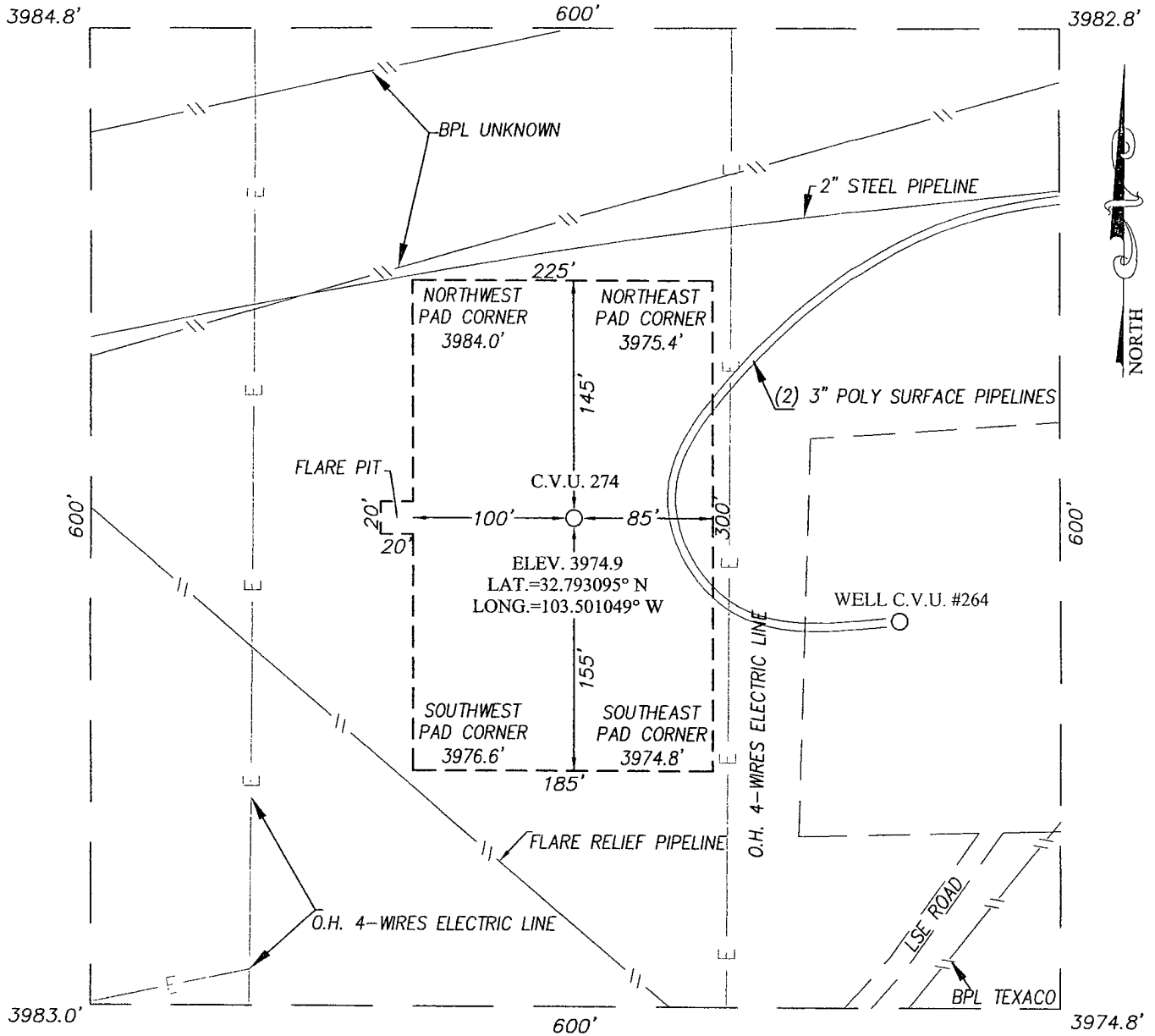
UL or lot No.	Section	Township	Range	Lot Idn	Feet from the	North/South line	Feet from the	East/West line	County
Dedicated Acres 40		Joint or Infill		Consolidation Code		Order No.			

NO ALLOWABLE WILL BE ASSIGNED TO THIS COMPLETION UNTIL ALL INTERESTS HAVE BEEN CONSOLIDATED OR A NON-STANDARD UNIT HAS BEEN APPROVED BY THE DIVISION

	<p>GEODETC COORDINATES NAD 27 NME</p> <p>SURFACE LOCATION Y=653245.3' N X=755762.0' E</p> <p>LAT.=32.793096' N LONG.=103.501049' W</p>	<p><b>OPERATOR CERTIFICATION</b></p> <p>I hereby certify that the information herein is true and complete to the best of my knowledge and belief, and that this organization either owns a working interest or unleased mineral interest in the land including the proposed bottom hole location or has a right to drill this well at this location pursuant to a contract with an owner of such mineral or working interest, or to a voluntary pooling agreement or a compulsory pooling order heretofore entered by the division.</p> <p><i>Denise Pinkerton 2-24-12</i> Signature Date</p> <p>Denise Pinkerton Printed Name</p> <p>Lea.kid@chevron.com E-mail Address</p>
		<p><b>SURVEYOR CERTIFICATION</b></p> <p>I hereby certify that the well location shown on this plat was plotted from field notes of actual surveys made by me or under my supervision, and that the same is true and correct to the best of my belief.</p> <p>JULY 27, 2011</p> <p>Date of Survey</p> <p>Signature &amp; Seal of Professional Surveyor</p> <p><i>Ronald J. Eidson</i> RONALD J. EIDSON NEW MEXICO 3239 30117/2011</p> <p>Certificate Number Gary G. Eidson 12641 Ronald J. Eidson 3239</p> <p>CMH JWSC W O 11.11.1244</p>

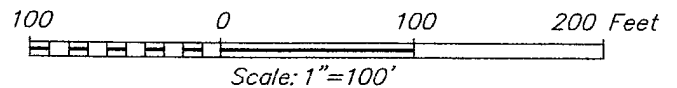
MAR 05 2012

SECTION 31, TOWNSHIP 17 SOUTH, RANGE 35 EAST, N.M.P.M.  
LEA COUNTY NEW MEXICO



DIRECTIONS TO LOCATION

FROM THE INTERSECTION OF COUNTY ROAD #50 (BUCKEYE ROAD) AND NM 238, GO SOUTH 0.7 MILE. TURN LEFT AND GO EAST 0.2 MILE. TURN LEFT AND GO NORTH TO C.V.U. #264 WELL PAD. THE LOCATION STAKE IS 210' WEST OF THE #264 WELL HEAD.



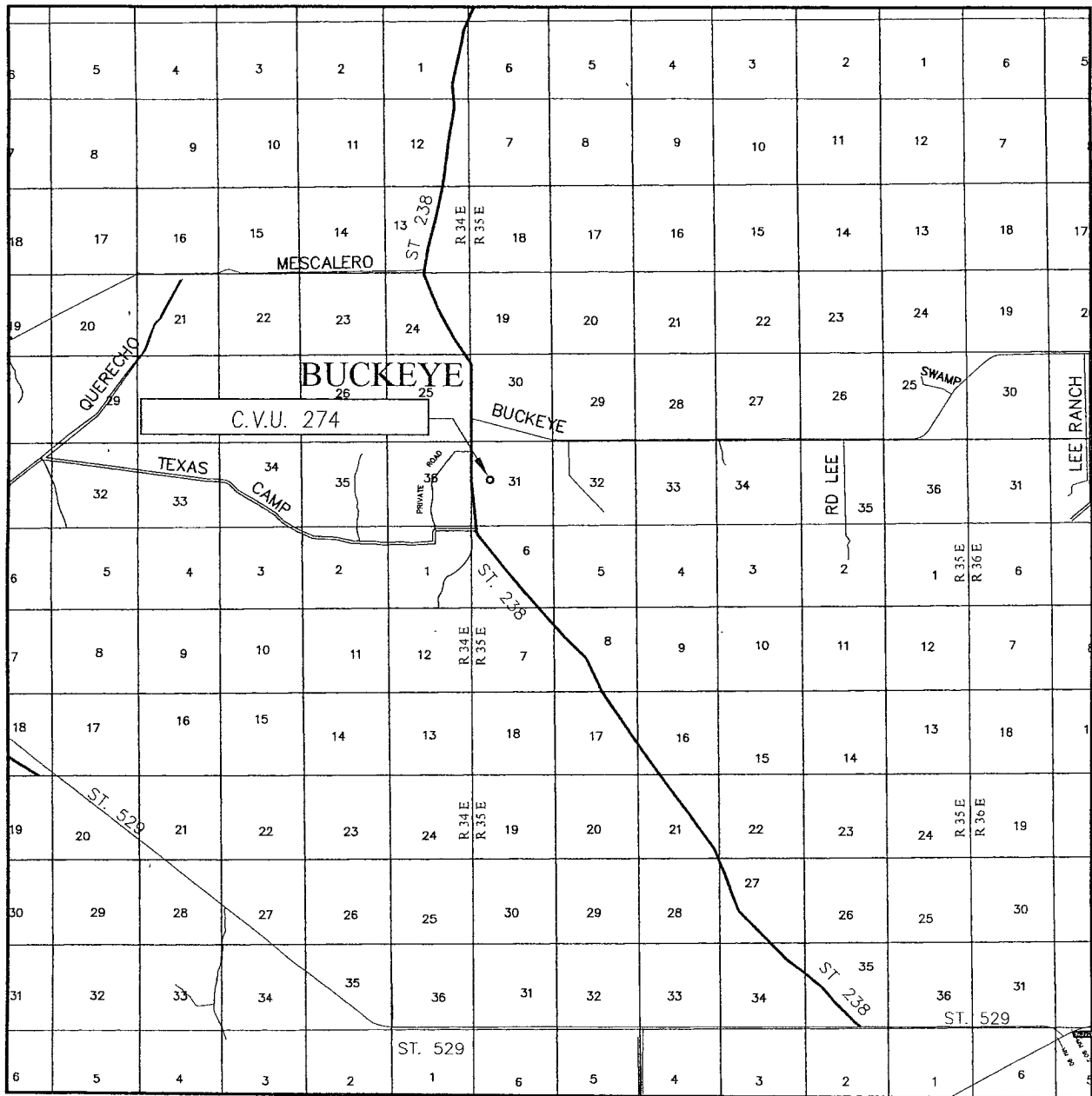
PROVIDING SURVEYING SERVICES SINCE 1946  
**JOHN WEST SURVEYING COMPANY**  
 412 N DAL PASO  
 HOBBS, NM 88240  
 (575) 393-3117

CHEVRON USA INC.

C.V.U. 274  
 LOCATED 2033 FEET FROM THE NORTH LINE  
 AND 1187 FEET FROM THE WEST LINE OF SECTION 31,  
 TOWNSHIP 17 SOUTH, RANGE 35 EAST, N.M.P.M.,  
 LEA COUNTY, NEW MEXICO

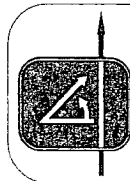
Survey Date: 07/13/11	Sheet 1 of 1 Sheets
W.O. Number: 11.11.1244	Dr. By: CMH
Date: 07/27/11	Rel. W.O.: 11111244
	Scale: 1"=100'

# VICINITY MAP



SCALE: 1" = 2 MILES

SEC. 31 TWP. 17-S RGE. 35-E  
 SURVEY N.M.P.M.  
 COUNTY LEA STATE NEW MEXICO  
 DESCRIPTION 2033' FNL & 1187' FWL  
 ELEVATION 3975'  
 OPERATOR CHEVRON USA INC.  
 LEASE C.V.U.



PROVIDING SURVEYING SERVICES  
 SINCE 1946  
**JOHN WEST SURVEYING COMPANY**  
 412 N DAL PASO  
 HOBBS, N.M. 88240  
 (575) 393-3117

# LOCATION VERIFICATION MAP



SCALE: 1" = 2000'

CONTOUR INTERVAL:  
 BASIN WELL, NM - 5'  
 BUCKEYE, NM - 5'

SEC. 31 TWP. 17-S RGE. 35-E

SURVEY N.M.P.M.

COUNTY LEA STATE NEW MEXICO

DESCRIPTION 2033' FNL & 1187' FWL

ELEVATION 3975'

OPERATOR CHEVRON USA, INC.

LEASE C.V.U.

U.S.G.S. TOPOGRAPHIC MAP  
 BUCKEYE AND BASIN WELL, NM

PROVIDING SURVEYING SERVICES  
 SINCE 1946  
**JOHN WEST SURVEYING COMPANY**  
 412 N. DAL PASO  
 HOBBS, N.M. 88240  
 (575) 393-3117