

District I
1625 N French Dr., Hobbs, NM 88240
District II
811 S. First St., Artesia, NM 88210
District III
1000 Rio Brazos Road, Aztec, NM 87410
District IV
1220 S St Francis Dr., Santa Fe, NM 87500

State of New Mexico
Energy Minerals and Natural Resources
Department
Oil Conservation Division
1220 South St. Francis Dr.
Santa Fe, NM 87505

Form C-144 CLEZ
Revised August 1, 2011

For closed-loop systems that only use above ground steel tanks or haul-off bins and propose to implement waste removal for closure, submit to the appropriate NMOCD District Office.

Closed-loop System Permit or Closure Plan Application

(that only use above ground steel tanks or haul-off bins and propose to implement waste removal for closure)

Type of action: ☒ Permit ☐ Closure

Instructions: Please submit one application (Form C-144 CLEZ) per individual closed-loop system request. For any application request other than for a closed-loop system that only use above ground steel tanks or haul-off bins and propose to implement waste removal for closure, please submit a Form C-144.

Please be advised that approval of this request does not relieve the operator of liability should operations result in pollution of surface water, ground water or the environment. Nor does approval relieve the operator of its responsibility to comply with any other applicable governmental authority's rules, regulations or ordinances.


1.
Operator: CHEVRON U.S.A. INC. OGRID #: 4323
Address: 15 SMITH ROAD, MIDLAND, TEXAS 79705
Facility or well name: CENTRAL VACUUM UNIT #274 (NEW DRILL)
API Number: 30-025-40466 OCD Permit Number: P1-04259
U/L or Qtr/Qtr E Section 31 Township 17S Range 35E County: LEA
Center of Proposed Design: Latitude _____ Longitude _____ NAD: ☐ 1927 ☐ 1983
Surface Owner: ☐ Federal ☒ State ☐ Private ☐ Tribal Trust or Indian Allotment

2.
☐ **Closed-loop System:** Subsection H of 19.15.17.11 NMAC
Operation: ☒ Drilling a new well ☐ Workover or Drilling (Applies to activities which require prior approval of a permit or notice of intent) ☐ P&A
☐ Above Ground Steel Tanks or ☐ Haul-off Bins

3.
Signs: Subsection C of 19.15.17.11 NMAC
☐ 12"x 24", 2" lettering, providing Operator's name, site location, and emergency telephone numbers
☐ Signed in compliance with 19.15.16.8 NMAC

4.
Closed-loop Systems Permit Application Attachment Checklist: Subsection B of 19.15.17.9 NMAC
Instructions: Each of the following items must be attached to the application. Please indicate, by a check mark in the box, that the documents are attached.
☒ Design Plan - based upon the appropriate requirements of 19.15.17.11 NMAC
☒ Operating and Maintenance Plan - based upon the appropriate requirements of 19.15.17.12 NMAC
☒ Closure Plan (Please complete Box 5) - based upon the appropriate requirements of Subsection C of 19.15.17.9 NMAC and 19.15.17.13 NMAC
☐ Previously Approved Design (attach copy of design) API Number: _____
☐ Previously Approved Operating and Maintenance Plan API Number: _____

5.
Waste Removal Closure For Closed-loop Systems That Utilize Above Ground Steel Tanks or Haul-off Bins Only: (19.15.17.13.D NMAC)
Instructions: Please identify the facility or facilities for the disposal of liquids, drilling fluids and drill cuttings. Use attachment if more than two facilities are required.
Disposal Facility Name: CONTROLLED RECOVERY INC. (CRI) Disposal Facility Permit Number: R9166-NM-01-0006
Disposal Facility Name: _____ Disposal Facility Permit Number: _____
Will any of the proposed closed-loop system operations and associated activities occur on or in areas that will not be used for future service and operations?
☐ Yes (If yes, please provide the information below) ☐ No
Required for impacted areas which will not be used for future service and operations:
☐ Soil Backfill and Cover Design Specifications - based upon the appropriate requirements of Subsection H of 19.15.17.13 NMAC
☐ Re-vegetation Plan - based upon the appropriate requirements of Subsection I of 19.15.17.13 NMAC
☐ Site Reclamation Plan - based upon the appropriate requirements of Subsection G of 19.15.17.13 NMAC

6.
Operator Application Certification:
I hereby certify that the information submitted with this application is true, accurate and complete to the best of my knowledge and belief.
Name (Print): DENISE PINKERTON Title: REGULATORY SPECIALIST
Signature:  Date: 02-27-2012
e-mail address: leakejd@chevron.com Telephone: 432-687-7375

7. **OCD Approval:** ☐ Permit Application (including closure plan) ☐ Closure Plan (only)

OCD Representative Signature: _____

Approval Date: _____

Title: _____

PETROLEUM ENGINEER

OCD Permit Number: _____

9104259

8. **Closure Report (required within 60 days of closure completion):** Subsection K of 19.15.17.13 NMAC

Instructions: Operators are required to obtain an approved closure plan prior to implementing any closure activities and submitting the closure report. The closure report is required to be submitted to the division within 60 days of the completion of the closure activities. Please do not complete this section of the form until an approved closure plan has been obtained and the closure activities have been completed.

☐ Closure Completion Date: _____

9. **Closure Report Regarding Waste Removal Closure For Closed-loop Systems That Utilize Above Ground Steel Tanks or Haul-off Bins Only:**

Instructions: Please indentify the facility or facilities for where the liquids, drilling fluids and drill cuttings were disposed. Use attachment if more than two facilities were utilized.

Disposal Facility Name: _____

Disposal Facility Permit Number: _____

Disposal Facility Name: _____

Disposal Facility Permit Number: _____

Were the closed-loop system operations and associated activities performed on or in areas that *will not* be used for future service and operations?

☐ Yes (If yes, please demonstrate compliance to the items below) ☐ No

Required for impacted areas which will not be used for future service and operations

☐ Site Reclamation (Photo Documentation)

☐ Soil Backfilling and Cover Installation

☐ Re-vegetation Application Rates and Seeding Technique

10.

Operator Closure Certification:

I hereby certify that the information and attachments submitted with this closure report is true, accurate and complete to the best of my knowledge and belief. I also certify that the closure complies with all applicable closure requirements and conditions specified in the approved closure plan.

Name (Print): _____

Title: _____

Signature: _____

Date: _____

e-mail address: _____

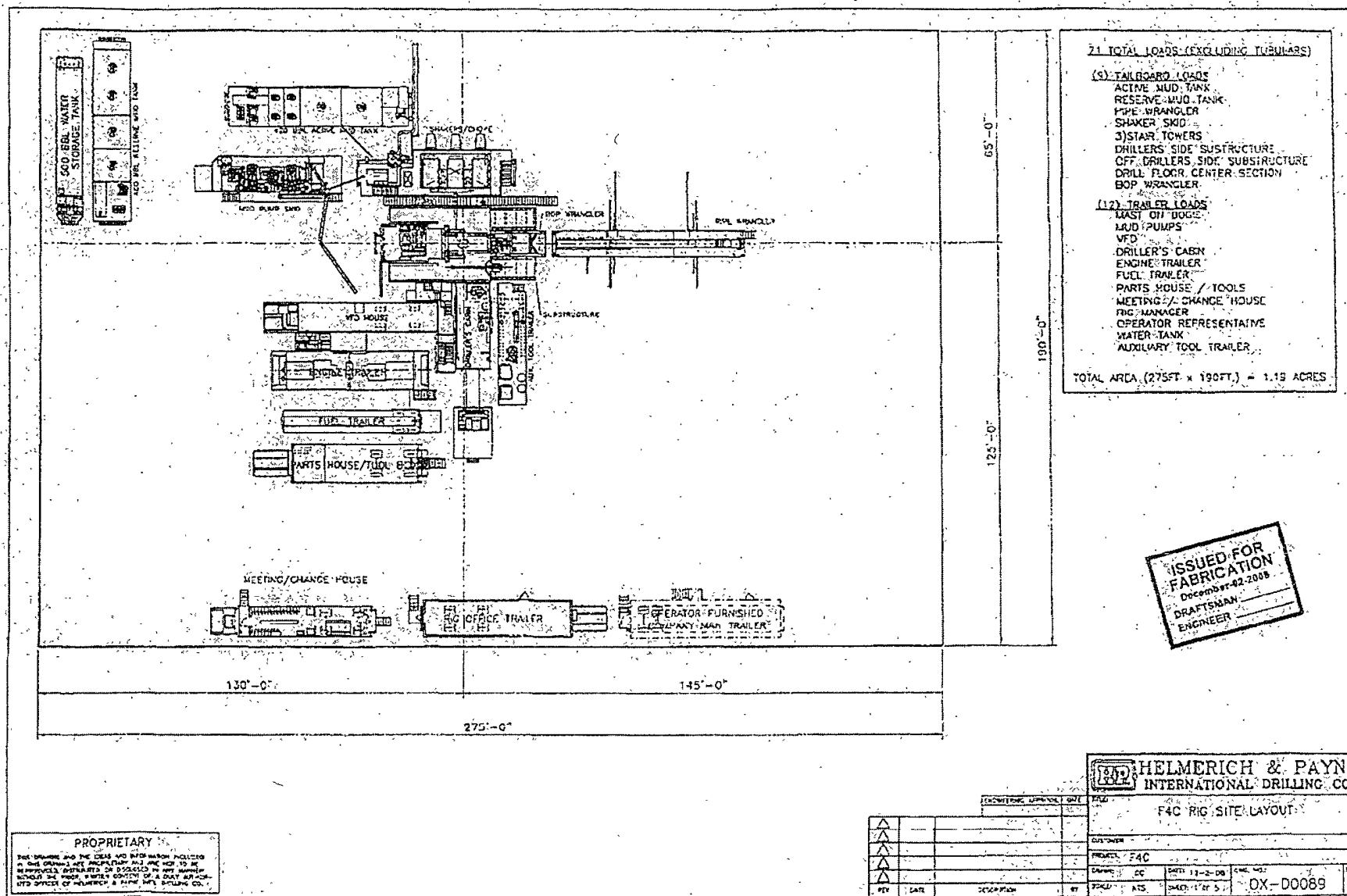
Telephone: _____

Operating & Maintenance Plan & Closure Plan

1. 250 bbl, 1/2 frac. Tank, cutting tank w/dimensions of 32'x10.5'x6' tall will be installed on top of 20 mil plastic barrier.
2. Cuttings will be discharged from shaker into cuttings tank.
3. Cuttings tank will be continuously monitored by designated roughneck so that cuttings tank will not be overfilled.
4. Rig crew will visually inspect fluid integrity of cuttings tank on a daily basis.
5. Documentation of visual inspection of cuttings tank will be captured on IADC Drilling Report.

Closure Plan

1. Drilled cuttings will be dipped out of tank with backhoe bucket and placed in suitable transport container (dump truck tank or cuttings bin)
2. Drill cuttings will be disposed of at a suitable off-location waste facility.



- 21 TOTAL LOADS (EXCLUDING TUBULARS)**
- (9) TAILBOARD LOADS**
- ACTIVE MUD TANK
 - RESERVE MUD TANK
 - PIPE WRANGLER
 - SHAKER SMD
 - 3) STAIR TOWERS
 - DRILLERS' SIDE SUBSTRUCTURE
 - OFF DRILLERS' SIDE SUBSTRUCTURE
 - DRILL FLOOR CENTER SECTION
 - BOP WRANGLER
- (12) TRAILER LOADS**
- LAST ON DOGS
 - MUD PUMPS
 - VFD
 - DRILLER'S CABIN
 - ENGINE TRAILER
 - FUEL TRAILER
 - PARTS HOUSE / TOOLS
 - MEETING / CHANGE HOUSE
 - RIG MANAGER
 - OPERATOR REPRESENTATIVE
 - WATER TANK
 - AUXILIARY TOOL TRAILER
- TOTAL AREA (275FT x 190FT.) = 1.19 ACRES

ISSUED FOR
FABRICATION
December 02-2008
DRAFTSMAN
ENGINEER

PROPRIETARY

THE DRAWING AND THE DATA AND INFORMATION CONTAINED HEREIN ARE THE PROPERTY OF HELMERICH & PAYNE INTERNATIONAL DRILLING CO. AND ARE NOT TO BE REPRODUCED, COPIED, OR DISCLOSED IN ANY MANNER WITHOUT THE WRITTEN CONSENT OF A DRAFTER OR THE OFFICE OF HELMERICH & PAYNE INTERNATIONAL DRILLING CO.

HELMERICH & PAYNE INTERNATIONAL DRILLING CO.	
F4C RIG SITE LAYOUT	
CUSTOMER	
PROJECT	F4C
DRAWN	CC
DATE	12-2-08
SCALE	AS SHOWN
BY	NTS
DATE	12-2-08
DESCRIPTION	OX-00089

