

DISTRICT I
1625 N. FRENCH DR., HOBBS, NM 88240

DISTRICT II
1301 W. GRAND AVENUE, ARTESIA, NM 88210

DISTRICT III
1000 RIO BRAZOS RD., AZTEC, NM 87410

DISTRICT IV
11885 S. ST. FRANCIS DR., SANTA FE, NM 87505

State of New Mexico
Energy, Minerals & Natural Resources Department
OIL CONSERVATION DIVISION
1220 South St. Francis Dr.
Santa Fe, New Mexico 87505

HOBBS OCD
FEB 29 2012
RECEIVED

Form C-102
Revised July 16, 2010
Submit to Appropriate
District Office

☐ AMENDED REPORT

WELL LOCATION AND ACREAGE DEDICATION PLAT

API Number 30-025-40468	Pool Code 61280	Pool Name VACUUM GRAYBURG SAN ANDRES
Property Code 29923	Property Name CVU	Well Number 284
OGRID No. 4323	Operator Name CHEVRON USA INC.	Elevation 3986'

Surface Location

UL or lot No.	Section	Township	Range	Lot Idn	Feet from the	North/South line	Feet from the	East/West line	County
M	31	17-S	35-E		1070	SOUTH	665	WEST	LEA

Bottom Hole Location If Different From Surface

UL or lot No.	Section	Township	Range	Lot Idn	Feet from the	North/South line	Feet from the	East/West line	County
Dedicated Acres 40	Joint or Infill	Consolidation Code	Order No.						

NO ALLOWABLE WILL BE ASSIGNED TO THIS COMPLETION UNTIL ALL INTERESTS HAVE BEEN CONSOLIDATED OR A NON-STANDARD UNIT HAS BEEN APPROVED BY THE DIVISION

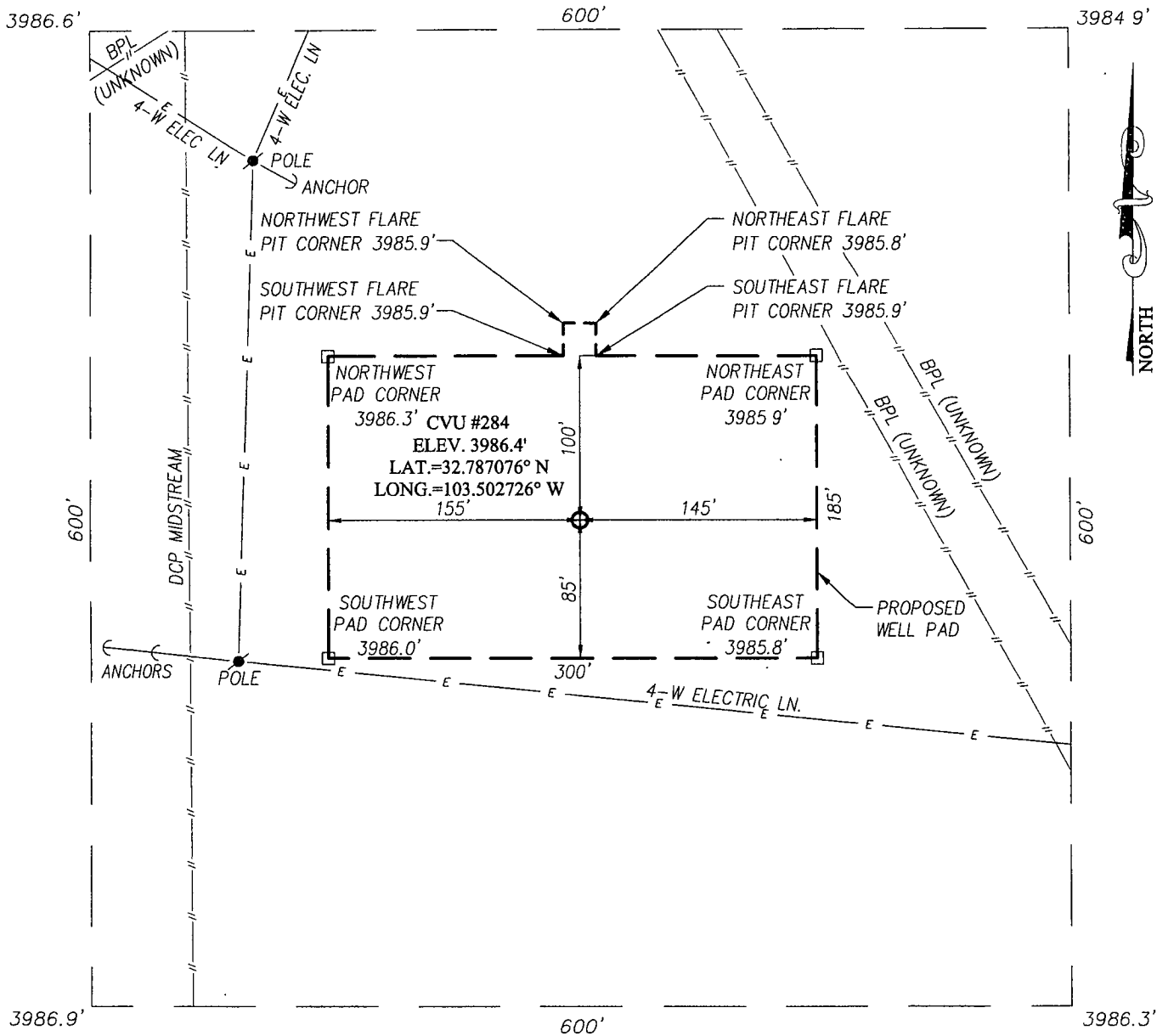
<p>665'</p> <p>1070'</p> <p>DETAIL</p> <p>3986.6' 3984.9'</p> <p>600'</p> <p>3986.9' 3986.3'</p>	<p>OPERATOR CERTIFICATION</p> <p>I hereby certify that the information herein is true and complete to the best of my knowledge and belief, and that this organization either owns a working interest or unleased mineral interest in the land including the proposed bottom hole location or has a right to drill this well at this location pursuant to a contract with an owner of such mineral or working interest, or to a voluntary pooling agreement or a compulsory pooling order heretofore entered by the division.</p> <p><i>Denise Pinkerton</i> 2-24-12 Signature Date</p> <p>Denise Pinkerton Printed Name</p> <p>Leakid@chevron.com E-mail Address</p>
	<p>SURVEYOR CERTIFICATION</p> <p>I hereby certify that the well location shown on this plat was plotted from field notes of actual surveys made by me or under my supervision, and that the same is true and correct to the best of my belief.</p> <p>JUNE 17, 2011</p> <p>Date of Survey</p> <p>Signature & Seal of Professional Surveyor: RONALD E. EIDSON</p> <p>NEW MEXICO REGISTERED SURVEYOR 3239</p> <p>Certificate Number: 12641 Surveyor: Ronald E. Eidson JWSC W.O.: 11.11.1246</p>

MAR 05 2012

SECTION 31, TOWNSHIP 17 SOUTH, RANGE 35 EAST, N.M.P.M.

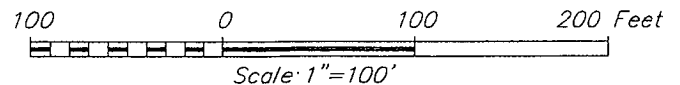
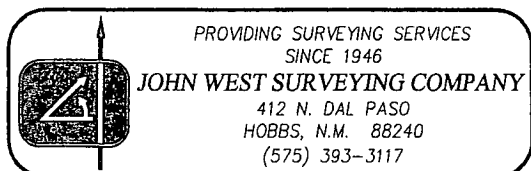
LEA COUNTY

NEW MEXICO



DIRECTIONS TO LOCATION

FROM THE INTERSECTION OF ST. HWY. #238 AND CO. RD. #150 (BUCKEYE RD.), GO SOUTH ON ST. HWY. #238 APPROX. 1.0 MILE. TURN LEFT AND GO EAST APPROX. 400 FEET. THIS LOCATION STAKE IS APPROX. 400 FEET SOUTHEAST OF LEASE ROAD.

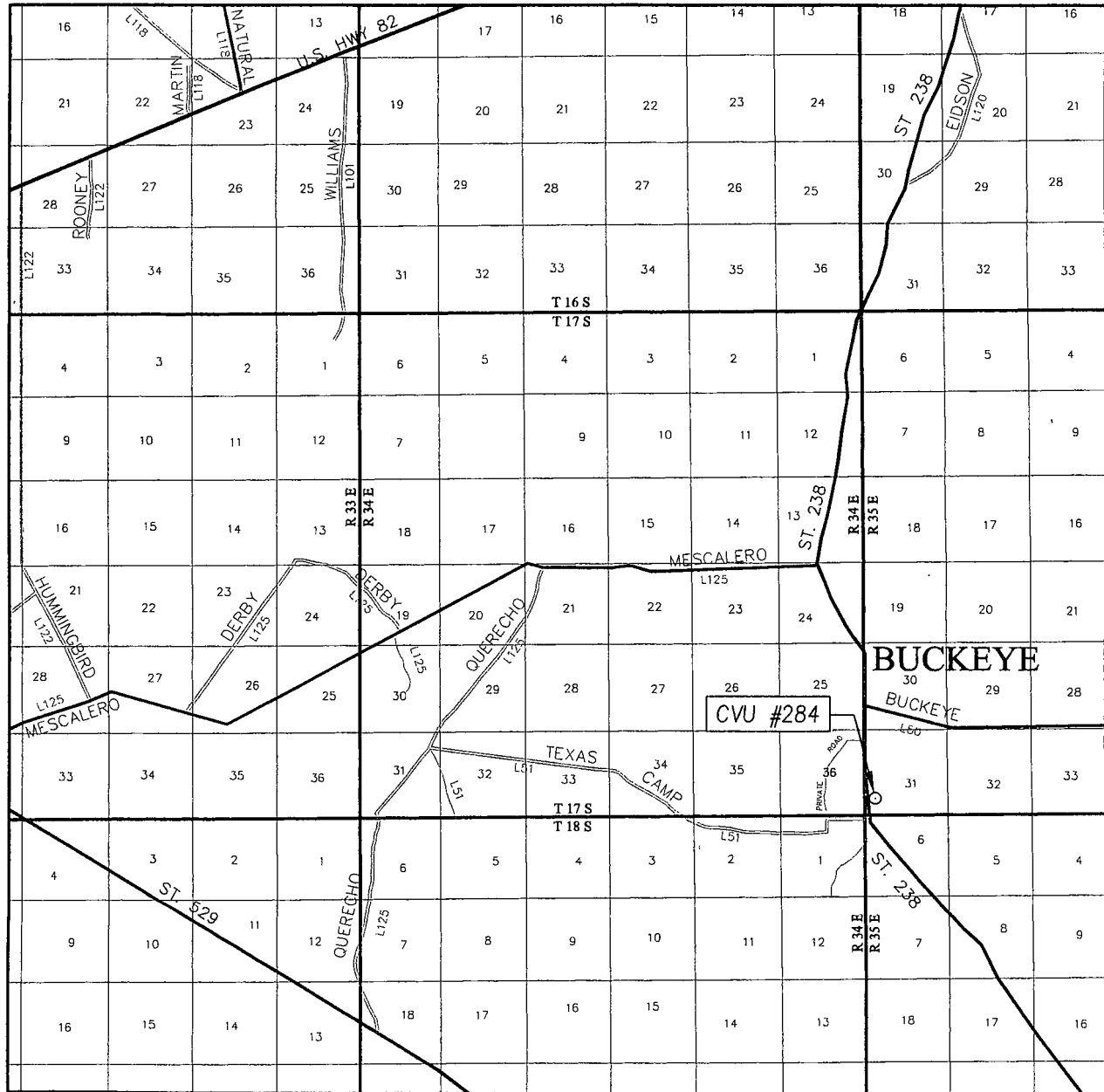


CHEVRON USA INC.

CVU #284 WELL
LOCATED 1070 FEET FROM THE SOUTH LINE
AND 665 FEET FROM THE WEST LINE OF SECTION 31,
TOWNSHIP 17 SOUTH, RANGE 35 EAST, N.M.P.M.,
LEA COUNTY, NEW MEXICO

Survey Date: 6/17/11	Sheet 1 of 1 Sheets
W.O. Number. 11.11.1246	Dr. By: DSS
Date: 7/20/11	Rel. W.O..
1111246	Scale: 1"=100'

VICINITY MAP



SCALE: 1" = 2 MILES

SEC. 31 TWP. 17-S RGE. 35-E

SURVEY N.M.P.M.


COUNTY LEA STATE NEW MEXICO

DESCRIPTION 1070' FSL & 665' FWL

ELEVATION 3986'

OPERATOR CHEVRON USA INC.

LEASE CVU

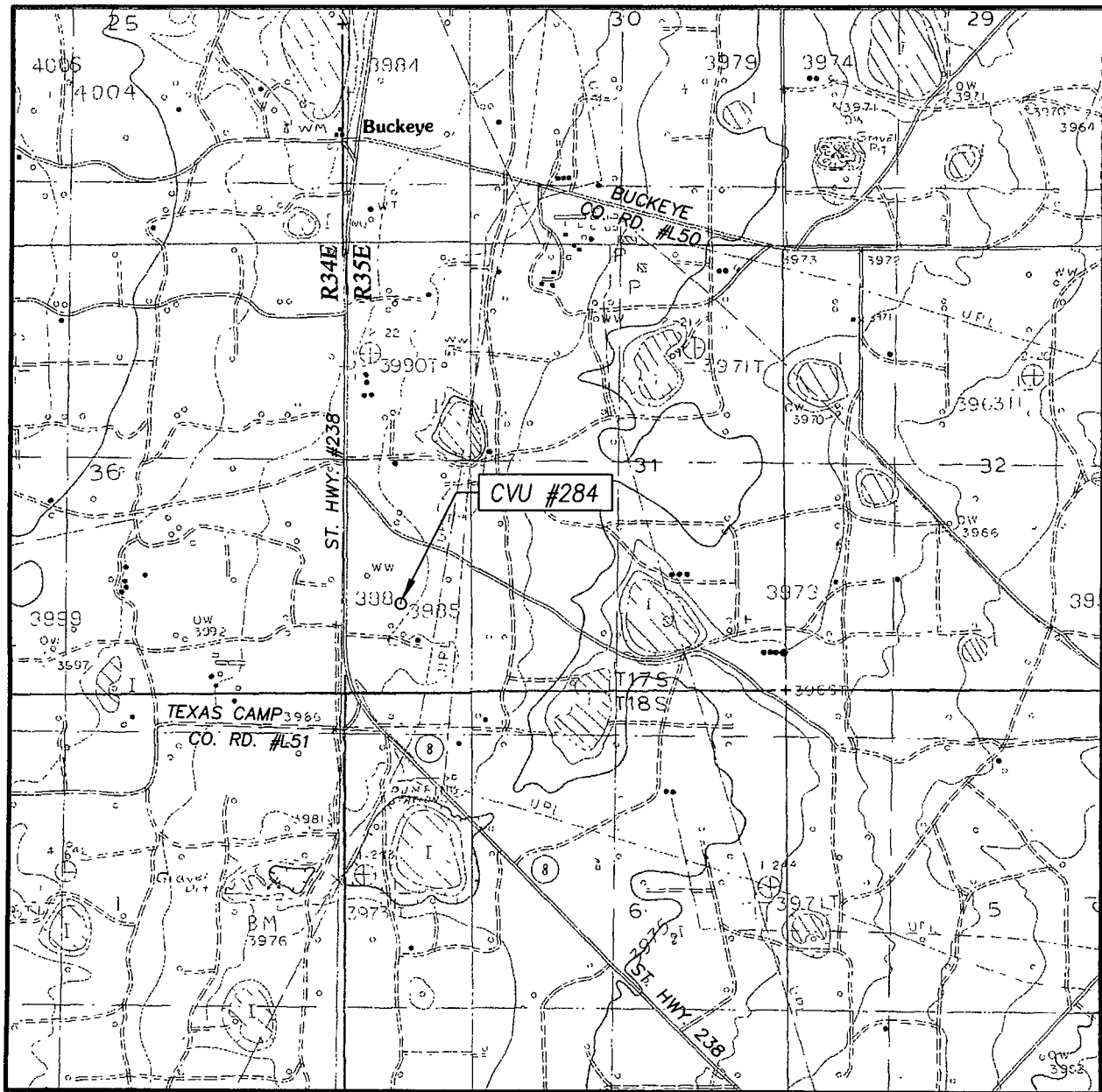


PROVIDING SURVEYING SERVICES
SINCE 1946

JOHN WEST SURVEYING COMPANY

412 N. DAL PASO
HOBBS, N.M. 88240
(575) 393-3117

LOCATION VERIFICATION MAP



SCALE: 1" = 2000'

CONTOUR INTERVAL:
BUCKEYE, N.M. - 5'

SEC. 31 TWP. 17-S RGE. 35-E

LOVINGTON SW, N.M. - 5'

SURVEY N.M.P.M.

COUNTY LEA STATE NEW MEXICO


DESCRIPTION 1070' FSL & 665' FWL

ELEVATION 3986'

OPERATOR CHEVRON USA INC.

LEASE CVU

U.S.G.S. TOPOGRAPHIC MAP
BUCKEYE, N.M.



PROVIDING SURVEYING SERVICES
SINCE 1946
JOHN WEST SURVEYING COMPANY
412 N. DAL PASO
HOBBS, N.M. 88240
(575) 393-3117