

DISTRICT I  
1625 N. FRENCH DR., HOBBES, NM 88240

HOBBES OCD

State of New Mexico  
Energy, Minerals and Natural Resources Department

*[Handwritten Signature]*

Form C-102

Revised October 12, 2005

Submit to Appropriate District Office

State Lease - 4 Copies

Fee Lease - 3 Copies

DISTRICT II  
1301 W. GRAND AVENUE, ARTESIA, NM 88211

FEB 29 2012

OIL CONSERVATION DIVISION

1220 SOUTH ST. FRANCIS DR.

Santa Fe, New Mexico 87505

DISTRICT III  
1000 Rio Brazos Rd., Aztec, NM 87410

RECEIVED

DISTRICT IV  
1220 S. ST. FRANCIS DR., SANTA FE, NM 87505

WELL LOCATION AND ACREAGE DEDICATION PLAT

☐ AMENDED REPORT

API Number <b>30-025-40268</b>	Pool Code <b>22900</b>	Pool Name <b>EWICE; BLI-TUBB- DR, NORTH</b>
Property Code <b>35023</b>	Property Name <b>EAST BLINEBRY DRINKARD UNIT</b>	Well Number <b>116</b>
OGRID No. <b>873</b>	Operator Name <b>APACHE CORPORATION</b>	Elevation <b>3549'</b>

Surface Location

UL or lot No.	Section	Township	Range	Lot Idn	Feet from the	North/South line	Feet from the	East/West line	County
15	1	21-S	37-E		3630	SOUTH	1760	EAST	LEA

Bottom Hole Location If Different From Surface

UL or lot No.	Section	Township	Range	Lot Idn	Feet from the	North/South line	Feet from the	East/West line	County
Dedicated Acres <b>40</b>		Joint or Infill	Consolidation Code	Order No.					

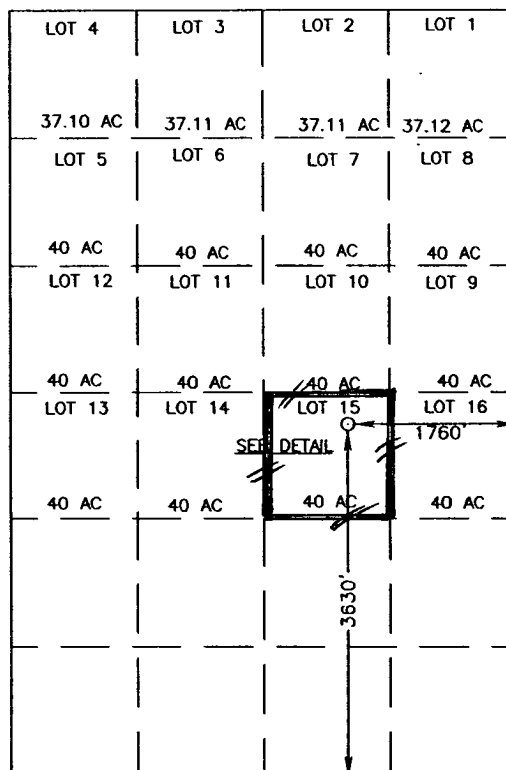
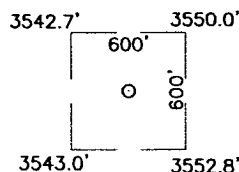
NO ALLOWABLE WILL BE ASSIGNED TO THIS COMPLETION UNTIL ALL INTERESTS HAVE BEEN CONSOLIDATED  
OR A NON-STANDARD UNIT HAS BEEN APPROVED BY THE DIVISION

GEODETIC COORDINATES  
NAD 27 NME

Y=551622.3 N  
X=876094.7 E

LAT.=32.510603° N  
LONG.=103.113334° W  
LAT. = 32°30'38" N  
LONG. = 103°06'48" W

DETAIL



SCALE: 1" = 2000'

OPERATOR CERTIFICATION

I hereby certify that the information herein is true and complete to the best of my knowledge and belief, and that this organization either owns a working interest or unleased mineral interest in the land including the proposed bottom hole location or has a right to drill this well at this location pursuant to a contract with an owner of such mineral or working interest, or to a voluntary pooling agreement or a compulsory pooling order heretofore entered by the division.

*[Handwritten Signature: Reesa Holland]*  
Signature Date  
**REESA HOLLAND**  
Printed Name

SURVEYOR CERTIFICATION

I hereby certify that the well location shown on this plat was plotted from field notes of actual surveys made by me or under my supervision, and that the same is true and correct to the best of my belief.

*[Circular Seal: RONALD J. EIDSON, AUGUST 2010, PROFESSIONAL SURVEYOR, LA]*  
Date Surveyed  
Signature & Seal of Professional Surveyor  
*[Handwritten Signature: Ronald J. Eidson]*  
10-11-1174  
Certificate No. GARY EIDSON 12641  
RONALD J. EIDSON 3239

MAR 21 2012