

30-025-40538

District I  
1625 N. French Dr., Hobbs, NM 88240  
District II  
1301 W. Grand Avenue, Artesia, NM 88210  
District III  
1000 Rio Brazos Rd., Aztec, NM 87410  
District IV  
1220 S. St. Francis Dr., Santa Fe, NM 87505

HOBBES OIL

APR 20 2012

State of New Mexico  
Energy, Minerals & Natural Resources Department  
OIL CONSERVATION DIVISION  
1220 South St. Francis Dr.  
Santa Fe, NM 87505

Form C-102  
Revised October 12, 2005  
Submit to Appropriate District Office  
State Lease- 4 Copies  
Fee Lease- 3 Copies

☐ AMENDED REPORT

## RECEIVED LOCATION AND ACREAGE DEDICATION PLAT

API Number 30-025- <b>40538</b>	Pool Code <b>51020 97900 WC</b>	Pool Name Red Hills; Bone Spring <b>UPPER SHALE</b>
Property Code <b>39180</b>	Property Name <b>VACA "24" FED. COM</b>	Well Number <b>7H</b>
OGRID No. <b>7377</b>	Operator Name <b>EOG RESOURCES, INC.</b>	Elevation <b>3338.0'</b>

## Surface Location

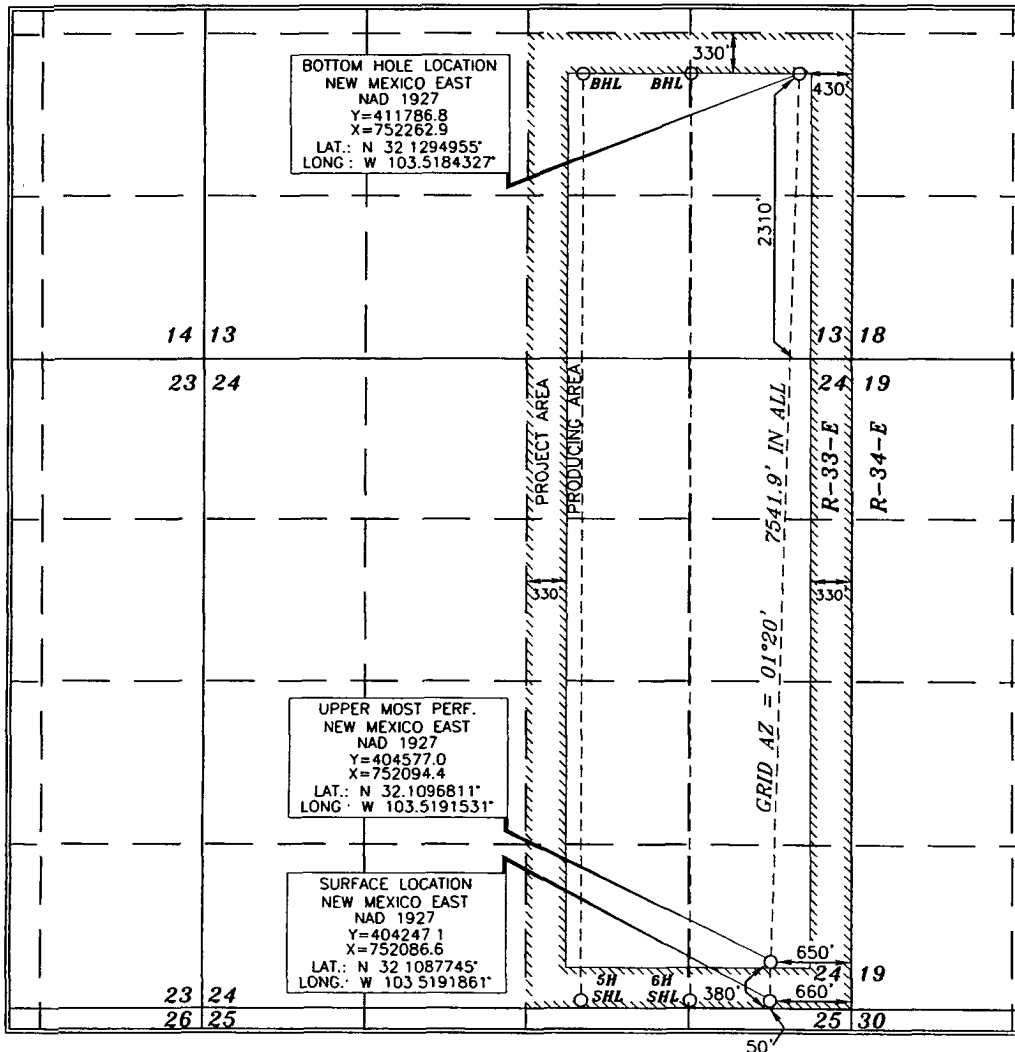
UL or lot no.	Section	Township	Range	Lot Idn	Feet from the	North/South line	Feet from the	East/West line	County
<b>P</b>	<b>24</b>	<b>25 SOUTH</b>	<b>33 EAST, N.M.P.M.</b>		<b>50'</b>	<b>SOUTH</b>	<b>660'</b>	<b>EAST</b>	<b>LEA</b>

## Bottom Hole Location If Different From Surface

UL or lot no.	Section	Township	Range	Lot Idn	Feet from the	North/South line	Feet from the	East/West line	County
<b>I</b>	<b>13</b>	<b>25 SOUTH</b>	<b>33 EAST, N.M.P.M.</b>		<b>2310'</b>	<b>SOUTH</b>	<b>430'</b>	<b>EAST</b>	<b>LEA</b>

Dedicated Acres	Joint or Infill	Consolidation Code	Order No.
<b>480</b>			

No allowable will be assigned to this completion until all interests have been consolidated or a non-standard unit has been approved by the division.



## OPERATOR CERTIFICATION

I hereby certify that the information contained herein is true and complete to the best of my knowledge and belief, and that this organization either owns a working interest or unleased mineral interest in the land including the proposed bottom hole location or has a right to drill this well at this location pursuant to a contract with an owner of such a mineral or working interest, or to a voluntary pooling agreement or a compulsory pooling order heretofore entered by the division.

*Roger Motley* 10-12-2011  
Signature Date

*Roger Motley*  
Printed Name

## SURVEYOR CERTIFICATION

I hereby certify that the well location shown on this plat was plotted from field notes or actual survey made by me or under my supervision and that the same is true and correct to the best of my belief.

SEPTEMBER 15, 2011  
Date of Survey

Signature and Seal of Professional Surveyor

*Terry J. Asel* 10/4/2011  
Certificate Number 15079

WO# 110915WL-a (KA)

APR 25 2012