

Submit 3 Copies To Appropriate District
Office
District I
1625 N. French Dr., Hobbs, NM 87240
District II
1301 W. Grand Ave., Artesia, NM 88210
District III
1000 Rio Brazos Rd., Aztec, NM 87401
District IV
1220 S. St. Francis Dr., Santa Fe, NM
87505

State of New Mexico
Energy, Minerals and Natural Resources

Form C-103

June 19, 2008

HOBBS OGD

OIL CONSERVATION DIVISION

1220 South St. Francis Dr.
Santa Fe, NM 87505

MAY 08 2012

WELL API NO. 30-025-07010
5. Indicate Type of Lease STATE <input type="checkbox"/> FEE <input checked="" type="checkbox"/>
6. State Oil & Gas Lease No.
7. Lease Name or Unit Agreement Name: FF HARDISON B
8. Well Number 3
9. OGRID Number 005380
10. Pool name or Wildcat BLINEBRY
11. Elevation (Show whether DR, RKB, RT, GR, etc.) 3429 GL

SUNDRY NOTICES AND REPORTS ON WELLS
(DO NOT USE THIS FORM FOR PROPOSALS TO DRILL OR TO DEEPEN OR PLUG BACK TO A DIFFERENT RESERVOIR. USE "APPLICATION FOR PERMIT" (FORM C-101) FOR SUCH PROPOSALS.)

1. Type of Well: Oil Well <input type="checkbox"/> Gas Well <input checked="" type="checkbox"/> Other <input type="checkbox"/>	7. Lease Name or Unit Agreement Name: FF HARDISON B
2. Name of Operator XTO Energy, Inc.	8. Well Number 3
3. Address of Operator 200 N. Loraine, Ste. 800 Midland, TX 79701	9. OGRID Number 005380
4. Well Location Unit Letter <u>G</u> : <u>2015</u> feet from the <u>N</u> line and <u>1980</u> feet from the <u>E</u> line Section <u>34</u> Township <u>21S</u> Range <u>37E</u> NMPM County <u>LEA</u>	10. Pool name or Wildcat BLINEBRY
11. Elevation (Show whether DR, RKB, RT, GR, etc.) 3429 GL	

12. Check Appropriate Box to Indicate Nature of Notice, Report, or Other Data

NOTICE OF INTENTION TO:

PERFORM REMEDIAL WORK ☐ PLUG AND ABANDON ☒
TEMPORARILY ABANDON ☐ CHANGE PLANS ☐
PULL OR ALTER CASING ☐ MULTIPLE COMPL ☐
DOWNHOLE COMMINGLE ☐

OTHER: ☐

SUBSEQUENT REPORT OF:

REMEDIAL WORK ☐ ALTERING CASING ☐
COMMENCE DRILLING OPNS. ☐ P AND A ☐
CASING/CEMENT JOB ☐

OTHER: ☐

13. Describe proposed or completed operations. (Clearly state all pertinent details, and give pertinent dates, including estimated date of starting any proposed work). SEE RULE 1103. For Multiple Completions: Attach wellbore diagram of proposed completion or recompletion.

XTO ENERGY, INC WOULD LIKE TO REQUEST TO P&A HARDISON B-3 w. THE FOLLOWING INTENT:

1. SET CIBP @ 5390'. LOAD & TEST CSG TO 350 PSI FOR 30 MINS.
2. SPOT CMT PLUG (25 SXS) CLASS 'C' FROM PBTD (5390') TO 5180'. WAIT ON CMT & TAG.
3. SPOT CMT PLUG (30 SXS) CLASS C FR 2930' TO 2700'. WAIT ON CMT & TAG.
4. PERF FR 1890'-1880', ESTABLISH CIRC W/ 9PPG PLUG MUD.
5. SET CIGR @ 1840', SQZ CMT PLUG FROM 1840' THROUGH PERFS @ 1890'.
6. SPOT CMT PLUG (25 SXS) FR 200' TO SURF.

Spud Date:

09/1946

Rig Release Date:

I hereby certify that the information above is true and complete to the best of my knowledge and belief.

SIGNATURE Stephanie Rabadue TITLE Regulatory Analyst DATE 05/02/2012
Type or print name STEPHANIE RABADUE E-mail address: stephanie_rabadue@xtoenergy.com PHONE 432-620-6714

For State Use Only

APPROVED BY [Signature] TITLE STAFF MGR DATE 5-8-2012
Conditions of Approval (if any):

MAY 08 2012

HARDISON B 3 WELLBORE DIAGRAM

DATA

LOCATION: 2015' FNL, 1980' FEL
UNIT 'G', SEC 34, T21S, R37E

COUNTY/STATE: LEA, NM

FIELD: BDT

FORMATION: BLINEBRY

SPUD DATE:

COMPLETION DATE: 09/1946

API#: 30-025-07010

STATUS:

IP:

WELL HISTORY

COMPLETION DATA:

09/1946: D&C. LOWER CSG IN 2 STAGES: 1st 100 SX TO 5170', 2nd 300 SX TO 1890'. PERF DRINKARD 6448'-6577'. AC W/3000 HSL

WORKOVER HISTORY:

01/1954: WORKOVER TO MAKE DUAL COMPLETION W/BLINEBRY 5500'-5530', 5580'-5620', 5640'-5680'. AC W/3000 GAL THEN 6000 GAL.

12/1955: ADD PERF IN BLINEBRY 5500'-5530', 5680'-5715'. AC W/500 GAL. FRAC F/5555'-5715' W/20,000 GAL OIL & 10,000# SAND.

01/1976: SET CIBP @ 6445'. PERF DRINKARD FROM 6303'-6394'. ACFRAC W/15,000 GAL K1 PAD, 17,000 GAL 20% HCL, 4,000 GAL FLUSH.

12/06/90: AC PERF FROM 5907'-5676. FLUSH W/40 BBLs WATER.

01/17/91: SET CIBP @ 6200'. DUMP 20' CMT ON TOP. PERF BLINEBRY FROM 5676'-5907 W/ 1 SPF FOR 56 SHOTS'. AC W/100BBLs 15% HCL. FRAC W/110 RESIN SAND/2080/681 KCF/20BW.

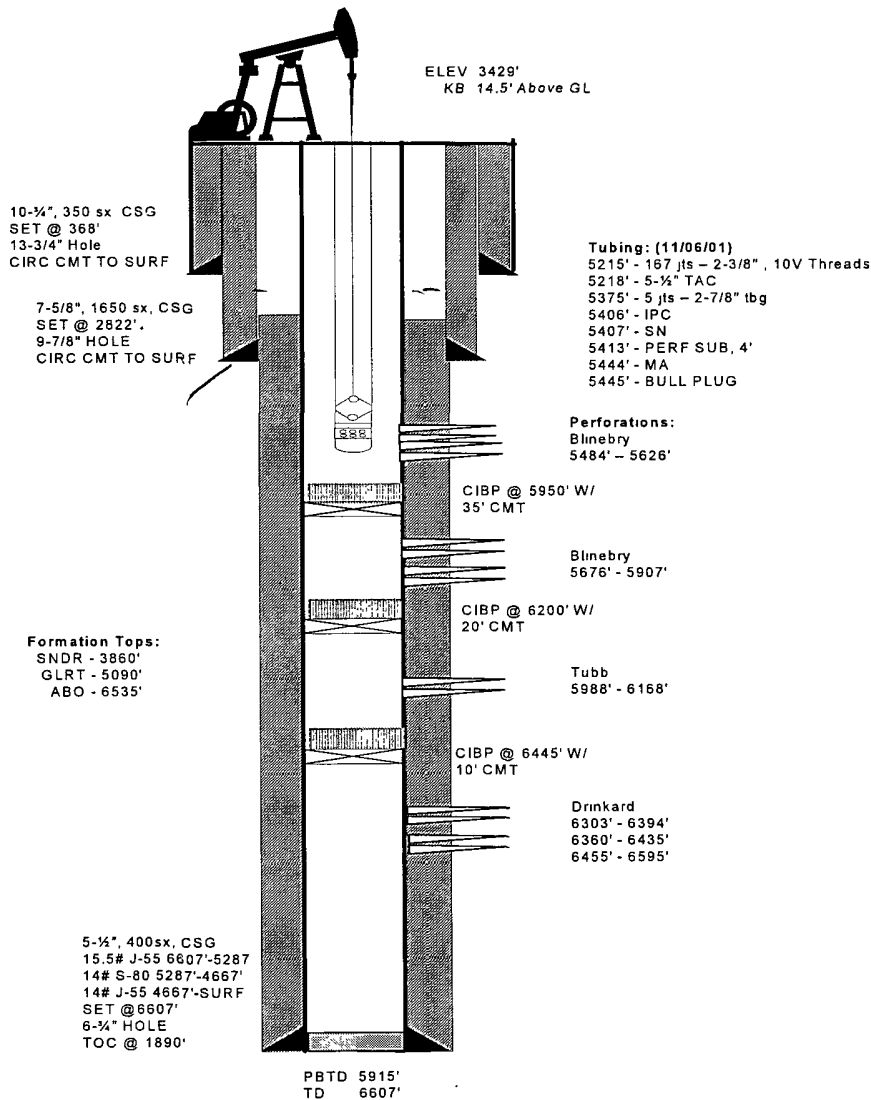
04/01/95: FRAC. 2 STAGES W/2000H15 15X W/335 GAL GEL USING BALL DIVERSION. FLUSH W/294 GAL 15% HCL

04/27/95: AC FLUSH W/50 BBL. FRAC WELL. FLUSH W/7 BBL AC & 51 BBL WATER.

08/21/95: PERF SELECTIVELY FROM 5988'-6168' @ 1 SPF FOR 110 SHOTS. FRAC'S W/41,000 GAL & 153,000# 20/40 SAND.

02/11/00: ACFRAC FROM 5484'-5626' W/4500 GAL 15% NEFE. USED BALLS FOR DIVERSION.

02/12/00: PERF FROM 5484'-5626. ACFRAC W/ 174k # 20/40 SAND. TAILED IN W/18K # RESINCOATED. FLUSHED 2 BBL SHORT OF TOP PERF. TOTAL LOAD 1724 BBL.



HARDISON B 3 WELLBORE DIAGRAM

DATA

LOCATION: 2015' FNL, 1980' FEL
UNIT 'G', SEC 34, T21S, R37E
COUNTY/STATE: LEA, NM
FIELD: BDT
FORMATION: BLINEBRY
SPUD DATE:
API#: 30-025-07010
STATUS:
IP:

COMPLETION DATE: 09/1946

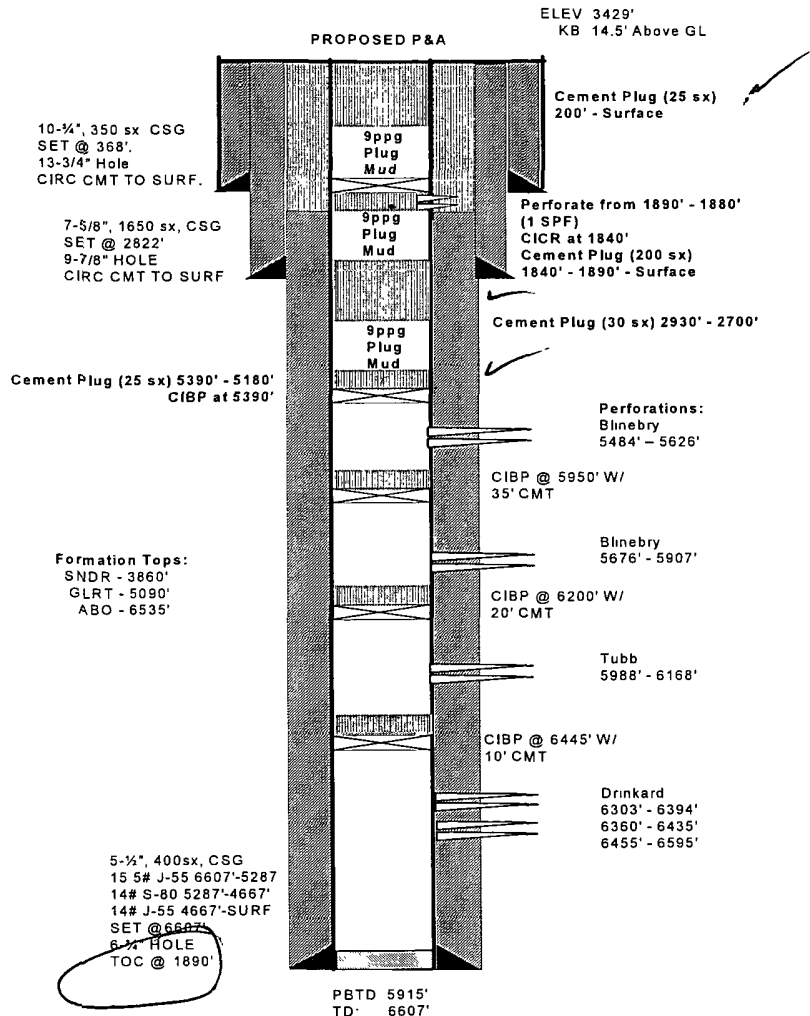
WELL HISTORY

COMPLETION DATA:

09/1946: D&C. LOWER CSG IN 2 STAGES: 1st 100 SX TO 5170', 2nd 300 SX TO 1890'. PERF DRINKARD 6448'-6577'. AC W/3000 HSL

WORKOVER HISTORY:

01/1954: WORKOVER TO MAKE DUAL COMPLETION W/BLINEBRY 5500'-5530', 5580'-5620', 5640'-5680'. AC W/3000 GAL THEN 6000 GAL.
12/1955: ADD PERF IN BLINEBRY 5500'-5530', 5680'-5715'. AC W/500 GAL. FRAC F/5555'-5715' W/20,000 GAL OIL & 10,000# SAND.
01/1976: SET CIBP @ 6445'. PERF DRINKARD FROM 6303'-6394'. ACFRAC W/15,000 GAL K1 PAD, 17,000 GAL 20% HCL, 4,000 GAL FLUSH.
12/06/90: AC PERF FROM 5907'-5676. FLUSH W/40 BBLs WATER.
01/17/91: SET CIBP @ 6200'. DUMP 20' CMT ON TOP. PERF BLINEBRY FROM 5676'-5907 W/ 1 SPF FOR 56 SHOTS'. AC W/100BBLs 15% HCL. FRAC W/110 RESIN SAND/2080/681 KCF/20BW.
04/01/95: FRAC. 2 STAGES W/2000H15 15X W/335 GAL GEL USING BALL DIVERSION. FLUSH W/294 GAL 15% HCL
04/27/95: AC FLUSH W/50 BBL. FRAC WELL. FLUSH W/7 BBL AC & 51 BBL WATER.
08/21/95: PERF SELECTIVELY FROM 5988'-6168' @ 1 SPF FOR 110 SHOTS. FRAC'S W/41,000 GAL & 153,000# 20/40 SAND.
02/11/00: ACFRAC FROM 5484'-5626' W/4500 GAL 15% NEFE. USED BALLS FOR DIVERSION.
02/12/00: PERF FROM 5484'-5626. ACFRAC W/ 174k # 20/40 SAND. TAILED IN W/18K # RESINCOATED. FLUSHED 2 BBL SHORT OF TOP PERF. TOTAL LOAD 1724 BBL.





**FF Hardison B #3
Plug and Abandon Procedure
Lea County, New Mexico
April 23, 2012**

ELEVATION: GL – 3429' TD – 6607'
 KB – 3443' PBTD – 5915'

WELL DATA:

Current Status: Shut in.

Last Well Test: 2011 – 0.5 BO / 1 BW / 0.5 MCF

Surface Casing: 10-3/4" csg set at 368' cemented with 350 sx. Cement circ to surface.

Intermediate Csg: 7-5/8" csg set at 2822' cemented with 1650 sx. Cement circ to surface.

Prod. Casing: 5-1/2" 14 ppf and 15.5 ppf set at 6607' cemented with 400 sx. TOC at 1890' by TS.

COMPLETION:

Top	Bottom	Length	Type	Formation	SPF	Shots	Date	Comments
5484	5626	142	Perf	Blinebry	1	54	2000	Shut In
5950	5953	3	CIBP	Blinebry	0	0		CIBP
5676	5907	231	Perf	Blinebry	1	56	1991	Isolated
6200	6203	3	CIBP	Tubb	0	0		CIBP
5988	6168	180	Perf	Tubb	1	110	1995	Isolated
6445	6448	3	CIBP	Drinkard	0	0		CIBP
6303	6394	91	Perf	Drinkard	1	91	1976	Isolated
6360	6435	75	Perf	Drinkard	1	75	1946	Isolated
6445	6595	150	Perf	Drinkard	1	150	1946	Isolated
					Total Holes =		536	

OBJECTIVE: **Permanently Plug and Abandon Well.**



**FF Hardison B #3
Plug and Abandon Procedure
Lea County, New Mexico
April 23, 2012**

RECOMMENDED PROCEDURE

*(Verify that anchors have been set and tested per NMOCD and OSHA guidelines)
This is a PRIVATE well.*

1. Notify OCD of intent to plug and abandon well.
2. MIRU PU. MI and rack 6000' of 2-3/8" 4.7ppf, N-80 WS. ND WH. NU BOP.
POH LD Prod Equipment.
3. PU and RIH with 2-3/8" notched collar and 5-1/2" casing scraper on 2-3/8" WS to PBTD at 5915'. POOH and LD notched collar and scraper.

Note: Space casing scraper above notched collar to keep above top perforation at 5484'.
4. RIH with 5-1/2" CIBP on 2-3/8" WS to 5390'. Set 5-1/2" CIBP at 5390'.
5. RU pump truck with chart recorder to WH. Load and test casing with brine to 350 psig and hold for 30 minutes for MIT. RD pump truck. *POOH with 2 3/8" WS.*
6. RIH with 2-3/8" notched collar on 2-3/8" WS to 5390'.
7. MIRU cement company. Circulate 5-1/2" production casing with 9ppg plug mud (min 135 bbls).
8. RU cement truck. Spot balanced cement plug (25 sx) of class 'C' cement from PBTD (5390') to 5180'. PUH to 4500' and reverse circulate WS clean with plug mud. WOC for 4 hours. RIH and tag cement at 5180'.
9. PUH to 2930'. Spot balanced cement plug (30 sx) from 2930' to 2700'. PUH to 2000' and reverse circulate tbg clean with plug mud. WOC for 4 hours. RIH and tag cement at 2700'. POOH with 2-3/8" WS.
10. MIRU wireline company. RIH with 3-1/8" casing gun loaded with 19gm charges at 1 SPF and 120 degree phasing for 10' to 1890'. Perforate from 1890' to 1880'. POOH and LD spent casing gun.

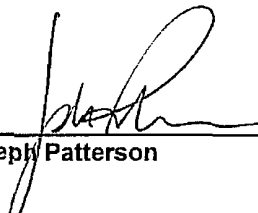
Note: Do not release wireline company until circulation is established down 5-1/2" casing and out 7-5/8" x 5-1/2" annulus.



FF Hardison B #3
Plug and Abandon Procedure
Lea County, New Mexico
April 23, 2012

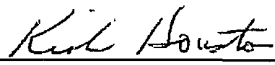
11. RU pump truck to WH. Establish circulation with 9ppg plug mud (40 bbls min.) down 5-1/2" casing and out 7-5/8" x 5-1/2" annulus. If circulation is established, RDMO wireline company and proceed with next step. If no circulation is established, contact Midland engineering.
12. PU and RIH with 5-1/2" CICR on 2-3/8" WS. Set 5-1/2" CICR at 1840'. Squeeze cement plug (200 sx min.) from 1840', through perforations at 1890' and out 7-5/8" x 5-1/2" annulus at surface. Sting out of CICR, PUH and reverse circulate WS clean with plug mud. PUH to 200'.
13. Spot balanced cement plug (25 sx) from 200' to surface. POOH and LD 2-3/8" WS.
14. RDMO cement company. RDMO PU.
15. Cut off WH and anchors, install dry hole marker, re-seed and reclaim location.

Prepared by:

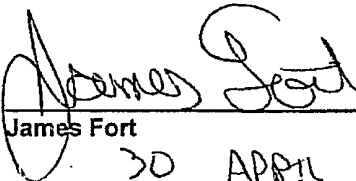


Joseph Patterson 4/23/2012
Date

Approved by:



Kirk Houston 4/27/2012
Date



James Fort 30 APRIL 2012
Date