

30025-40791
Surface Use Plan
Dos Equis 12 Federal Com No. 2
Cimarex Energy Co. of Colorado
Unit B, Section 12
T23S-R32E, Lea County, NM

HOBBS OCD

SEP 18 2012

RECEIVED

1. **Existing Roads:** Area maps, Exhibit "A" shows the proposed well site as staked. Exhibit "B" is a reproduction of Lea Co. General Highway Map. Exhibit "C" is a reproduction of a USGS Topographic Map, and Exhibit "C-1" is a well site layout map, showing proposed road to location and existing road.

A. The maximum width of the driving surface will be 15.' The road will be crowned and ditched with a 2% slope from the tip of the crown to the edge of the driving surface. The ditches will be 1' deep with 3:1 slopes. The driving surface will be made of 6" rolled and compacted caliche.

B. At mile marker 127 of Hwy 128, go North for 2.25 miles to lease road. On lease road, go West 0.4 mi. to lease road, on lease road go North 0.1 mi. turning West on ranch road, 0.5 mi. to proposed lease road.

2. **Planned Access Roads:** Approximately 1500' of existing ranch road will be upgraded and 177' of new access road into SE corner of location is proposed.

Planned E-Line: Approximately 177' of 4 wire 3 phase E-line to the E-line trunk along lease road. Line we be 1 span with a 40' pole built to BLM Raptor specs.

3. **Location of Existing Wells in a One-Mile Radius - Exhibit A**

- | | |
|----------------------|-------------------------|
| A. Water wells - | None known |
| B. Disposal wells - | None known |
| C. Drilling wells - | None known |
| D. Producing wells - | As shown on Exhibit "A" |
| E. Abandoned wells - | As shown on Exhibit "A" |

4. **Location of Proposed Production Facilities:**

If, upon completion this well is a producer; approximately 2000' of 4" SDR-11 poly oil, gas, water flowline will be laid on surface to the tank battery located at Well No. 1 pad site. Any changes to the facilities or off-site facilities will be accompanied by a Sundry Notice.

5. **Location and Type of Water Supply:**

Water will be purchased locally from a commercial source and trucked over the access roads.

6. **Source of Construction Material:**

If possible, native caliche will be obtained from the excavation of drill site. Topsoil will be pushed back from the drill site and existing caliche will be ripped and compacted. Then topsoil will be stockpiled on location as depicted on Exhibit "D" (rig layout). If additional material is needed, it will be purchased from a BLM-approved pit as near as possible to the well

7. **Methods of Handling Waste Material:**

- A. Drill cuttings will be separated by a series of solids removal equipment and stored in steel containment pits and then hauled to a state-approved disposal facility.
- B. All trash, junk and other waste material will be contained in trash cages or bins to prevent scattering. When the job is completed all contents will be removed and disposed of in an approved sanitary land fill.
- C. Salts remaining after completion of well will be picked up by supplier including broken sacks.
- D. Sewage from living quarters will drain into holding tanks and be cleaned out periodically and hauled to a waste disposal facility. A Porta-John will be provided for the rig crews. This equipment will be properly maintained during the drilling operations and removed upon completion of the well.
- E. Drilling fluids will be contained in steel pits in a closed circulating system. Fluids will be cleaned and reused. Water produced during testing will be contained in the steel pits and disposed of at a state approved disposal facility. Any oil or condensate produced will be stored in test tanks until sold and hauled from the site.

Surface Use Plan
Dos Equis 12 Federal Com No. 2
Cimarex Energy Co. of Colorado
Unit B, Section 12
T23S-R32E, Lea County, NM

8. Ancillary Facilities:

- A. No camps or airstrips to be constructed.

9. Well Site Layout:

- A. Exhibit "D" shows location and rig layout.
- C. Mud pits in the closed circulating system will be steel pits and the cuttings will be stored in steel containment pits.
- D. Cuttings will be stored in steel pits until they are hauled to a state-approved disposal facility.
- E. If the well is a producer, those areas of the location not essential to production facilities will be reclaimed and seeded per BLM requirements.

10. Plans for Restoration of Surface:

Rehabilitation of the location will start in a timely manner after all drilling operations cease. The type of reclamation will depend on whether the well is a producer or a dry hole.

Drainage systems, if any, will be reshaped to the original configuration with provisions made to alleviate erosion. These may need to be modified in certain circumstances to prevent inundation of the location's pad and surface facilities. After the area has been shaped and contoured, topsoil from the spoil pile will be placed over the disturbed area to the extent possible. Revegetation procedures will comply with BLM standards.

If the well is a dry hole, the pad and road area will be recountoured to match the existing terrain. Topsoil will be spread to the extent possible. Revegetation will comply with BLM standards.

Should the well be a producer, those areas of the location not essential to production facilities and operations will be reclaimed and seeded per BLM requirements. Please see Production Facilities Layout Diagram, exhibit D-1.

11. Other Information

- A. Topography consists of a sloping plane with loose tan sands. Vegetation is mainly yucca, mesquite and shin oak.
- B. The wellsite is on surface owned by Department of the Interior, Bureau of Land Management. The land is used mainly for farming, cattle ranching, recreational use, and oil and gas production.
- C. An Archaeological survey will be conducted on the location and proposed roads, and this report will be filed with the Bureau of Land Management in the Carlsbad BLM office.
- D. There are no known dwellings within 1½ miles of this location.

Operator Certification Statement
Dos Equis 12 Federal Com No. 2
Cimarex Energy Co. of Colorado
Unit B, Section 12
T23S-R32E, Lea County, NM

Operator's Representative

Cimarex Energy Co. of Colorado
600 N Marienfeld St Ste 600
Midland TX 79701
Office Phone: (432) 571-7800
Zeno Farris

CERTIFICATION: I hereby certify that I, or someone under my direct supervision, have inspected the drill site and access route proposed herein; that I am familiar with the conditions which currently exist; that I have full knowledge of state and Federal laws applicable to this operation; that the statements made in this APD package are, to the best of my knowledge, true and correct; and that the work associated with the operations proposed herein will be performed in conformity with this APD package and the terms and conditions under which it is approved. I also certify that I, or the company I represent, am responsible for the operations conducted under this application. These statements are subject to the provisions of 18 U.S.C. 1001 for the filing of false statements.

Executed this 26th day of April, 2012

NAME: Zeno Farris
Zeno Farris

TITLE: Manager Operations Administration

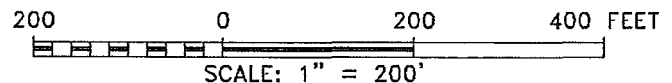
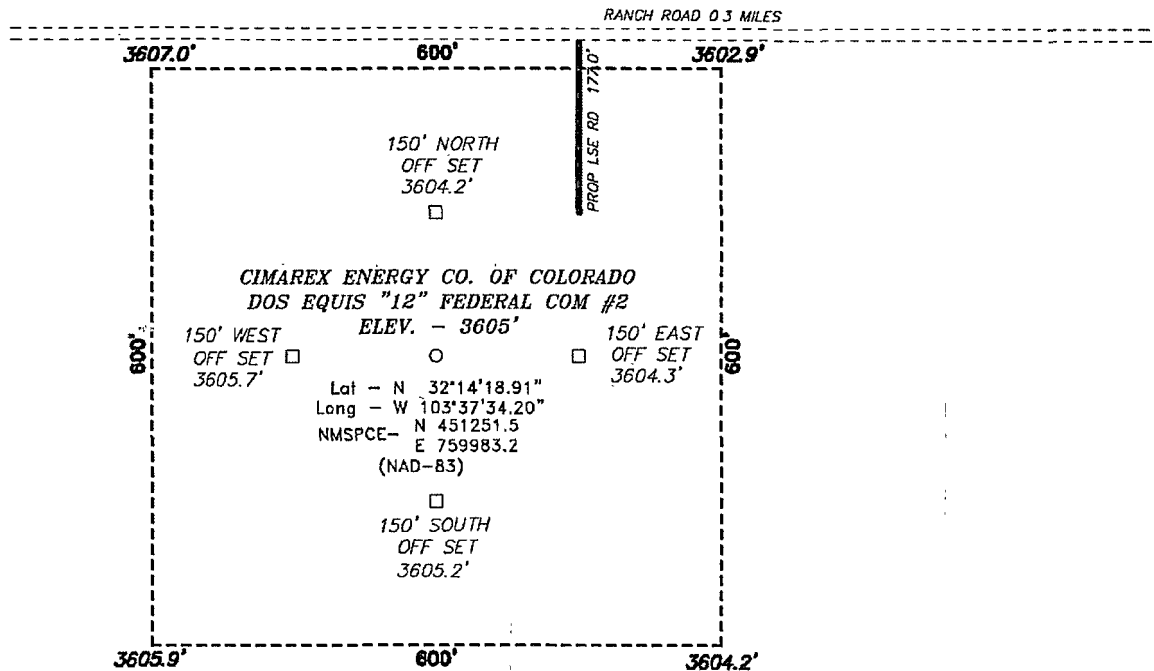
ADDRESS: 600 N Marienfeld St Ste 600
Midland TX 79701

TELEPHONE: Office Phone: (432) 571-7800

EMAIL: zfarris@cimarex.com

Field Representative: Same as above

SECTION 12, TOWNSHIP 24 SOUTH, RANGE 32 EAST, N.M.P.M.,
LEA COUNTY, NEW MEXICO.



Directions to Location:

FROM MILE MARKER OF 127 OF HWY 128, GO NORTH 2.25 MILES TO LEASE ROAD, ON LEASE ROAD GO WEST 0.4 MILES TO LEASE ROAD, ON LEASE ROAD GO NORTH 0.1 MILE TURNING WEST ON RANCH ROAD 0.3 MILES TO PROPOSED LEASE ROAD.

BASIN SURVEYS P.O. BOX 1786-HOBBS, NEW MEXICO

W.O. Number: 25877 Drawn By: **J. SMALL**

Date: 12-29-2011 Disk: JMS 25877

CIMAREX ENERGY CO. OF COLORADO

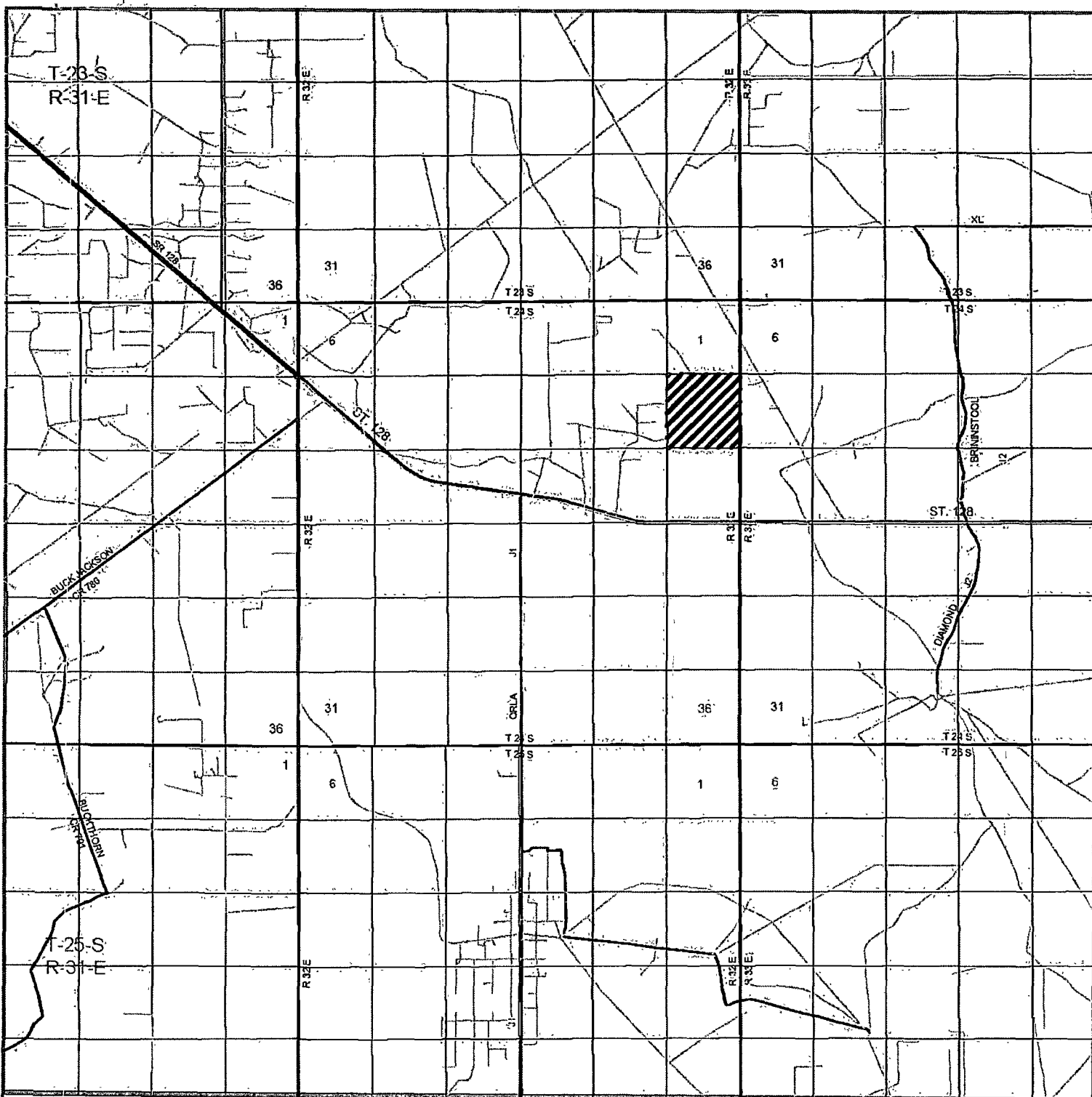
REF: DOS EQUIS "12" FEDERAL COM #2 / WELL PAD TOPO

THE DOS EQUIS "12" FEDERAL COM #2 LOCATED 330'

FROM THE NORTH LINE AND 1980' FROM THE EAST LINE OF
SECTION 12, TOWNSHIP 24 SOUTH, RANGE 32 EAST,

N.M.P.M., LEA COUNTY, NEW MEXICO.

Survey Date: 12-28-2011 Sheet 1 of 1 Sheets



DOS EQUIS "12" FEDERAL COM #2
 Located 330' FNL and 1980' FEL
 Section 12, Township 24 South, Range 32 East,
 N.M.P.M., Lea County, New Mexico.

basin
surveys
 focused on excellence
 in the oilfield

P.O. Box 1786
 1120 N. West County Rd.
 Hobbs, New Mexico 88241
 (575) 393-7316 - Office
 (575) 392-2206 - Fax
 basinsurveys.com

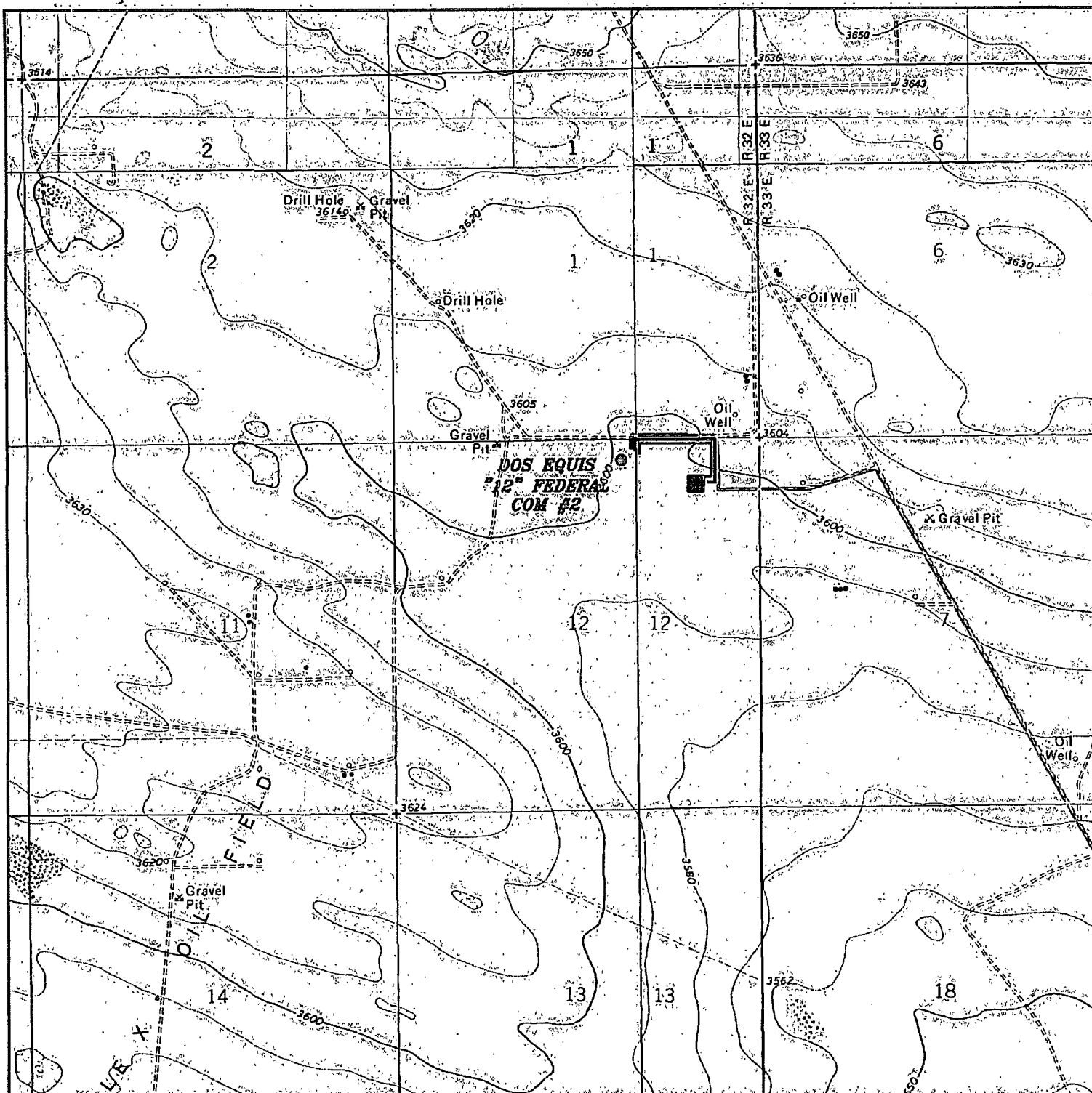
W.O. Number: JMS 25877

Survey Date: 12-28-2011

Scale: 1" = 2 Miles

Date: 12-29-2011

CIMAREX
ENERGY CO.
OF COLORADO



DOS EQUIS "12" FEDERAL COM #2
 Located 330' FNL and 1980' FEL
 Section 12, Township 24 South, Range 32 East,
 N.M.P.M., Lea County, New Mexico.

■ Battery
 — E-line
 — Flowline

basin
SURVEYS
 focused on excellence
 in the oilfield

P.O. Box 1786
 1120 N. West County Rd.
 Hobbs, New Mexico 88241
 (575) 393-7318 - Office
 (575) 392-2206 - Fax
 basin-surveys.com

W.O. Number: JMS 25877

Survey Date: 12-28-2011

Scale: 1" = 2000'

Date: 12-29-2011

CIMAREX
ENERGY CO.
OF COLORADO

