

OCT 15 2012

**District I**  
1625 N French Dr, Hobbs, NM 88240  
Phone (575) 393-6161 Fax (575) 393-0720  
**District II**  
811 S First St., Artesia, NM 88210  
Phone (575) 748-1283 Fax (575) 748-9720  
**District III**  
1000 Rio Brazos Rd., Aztec, NM 87410  
Phone (505) 334-6178 Fax (505) 334-6170  
**District IV**  
1220 S. St Francis Dr., Santa Fe, NM 87505  
Phone (505) 476-3470 Fax (505) 476-3462

State of New Mexico

Form C-102  
August 1, 2011

**RECEIVED**  
Energy, Minerals and Natural Resources  
Oil Conservation Division  
1220 S. St Francis Dr.  
Santa Fe, NM 87505

Permit 156295

**WELL LOCATION AND ACREAGE DEDICATION PLAT**

1 API Number <b>3D-025-40818</b>	2 Pool Code <b>5535 90674</b>	3 Pool Name <b>Triple X BERRY; BONE SPRING, NORTH West</b>
4 Property Code 39181	5 Property Name TRES EQUIS 5 STATE	6 Well No 002Y
7 OGRID No 215099	8 Operator Name CIMAREX ENERGY CO.	9 Elevation 3662

**10. Surface Location**

UL - Lot	Section	Township	Range	Lot Idn	Feet From	N/S Line	Feet From	E/W Line	County
C	5	24S	33E		330	N	2130	W	LEA

**11. Bottom Hole Location If Different From Surface**

UL - Lot	Section	Township	Range	Lot Idn	Feet From	N/S Line	Feet From	E/W Line	County
N	5	24S	33E	N	330	S	2040	W	LEA

12 Dedicated Acres 159.79	13 Joint or Infill	14 Consolidation Code	15 Order No.
------------------------------	--------------------	-----------------------	--------------

**NO ALLOWABLE WILL BE ASSIGNED TO THIS COMPLETION UNTIL ALL INTERESTS HAVE BEEN CONSOLIDATED OR A NON-STANDARD UNIT HAS BEEN APPROVED BY THE DIVISION**

	<p><b>OPERATOR CERTIFICATION</b></p> <p><i>I hereby certify that the information contained herein is true and complete to the best of my knowledge and belief, and that this organization either owns a working interest or unleased mineral interest in the land including the proposed bottom hole location(s) or has a right to drill this well at this location pursuant to a contract with an owner of such a mineral or working interest, or to a voluntary pooling agreement or a compulsory pooling order heretofore entered by the division</i></p> <p>E-Signed By: Title: Date:</p> <hr/> <p><b>SURVEYOR CERTIFICATION</b></p> <p><i>I hereby certify that the well location shown on this plat was plotted from field notes of actual surveys made by me or under my supervision, and that the same is true and correct to the best of my belief</i></p> <p>Surveyed By: gary jones Date of Survey: 10/12/2012 Certificate Number 7977</p>
--	---

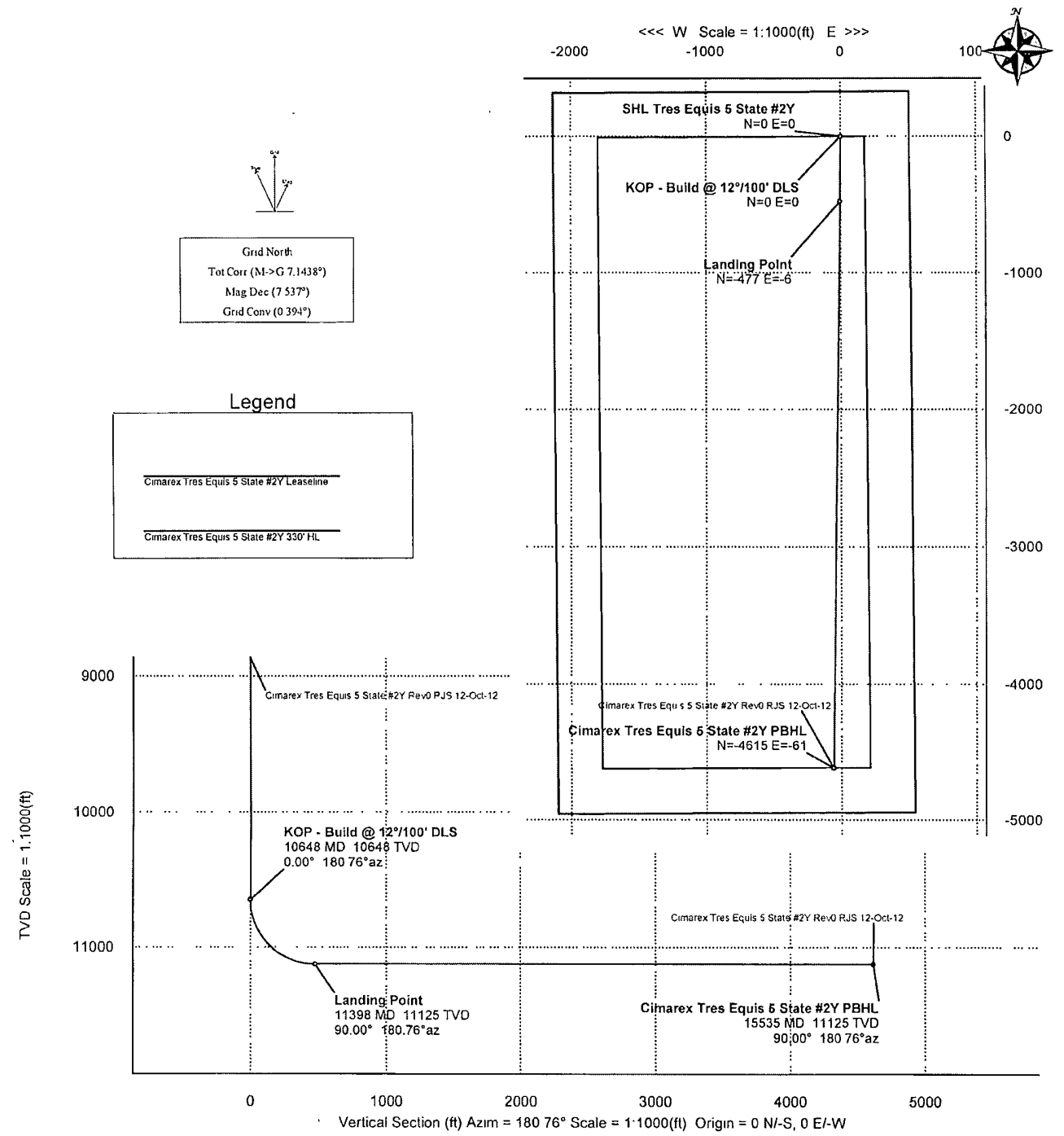


Cimarex

**PATHFINDER**  
A Schlumberger Company

WELL	Tres Equis 5 State #2Y	FIELD	NM Lea County	STRUCTURE	TBD
------	------------------------	-------	---------------	-----------	-----

Magnetic Parameters	Dip 60.138° Mag Dec 7.537°	Date October 12 2012 FS 48486.3m	Surface Location Lat 31 32 15 11.032 Lon W 103 35 45.507	Northings 458550.90 RJS Easting 769282.70 RJS	UTM Zone 12AD83 UTM Mexico State Plane - Eastern Zone, US Feet Grid Conv 0.314° Scale Fact 0.99996160	Thickness Srv Tres Equis 5 State #2Y Plan Rev 0 RJS 12-Oct-12	TVD Ref Ground Level (3562ft above FLS) Srv Date October 12 2012
---------------------	-------------------------------	-------------------------------------	--	---	--	---	--



Grid North:  
Tot Corr (M->G 7.1438°)  
Mag Dec (7.537°)  
Grid Conv (0.394°)

Legend

	Cimarex Tres Equis 5 State #2Y Lease Line
	Cimarex Tres Equis 5 State #2Y 330' HL

Critical Point	MD	INCL	AZIM	TVD	YSEC	N(+)/S(-)	E(+)/W(-)	DLS
SHL Tres Equis 5 State #2Y	0 00	0 00	180.76	0 00	0 00	0 00	0 00	0 00
KOP - Build @ 12°/100' DLS	10647.50	0 00	180.76	10647.50	0 00	0 00	0 00	0 00
Landing Point	11397.56	90 00	180.76	11125.00	477.50	-477.46	-6.29	12 00
Cimarex Tres Equis 5 State #2Y PBHL	15533.31	90 00	180.76	11125.00	4615.26	-4614.85	-60.90	0 00



## Cimarex Tres Equis 5 State #2Y Rev0 RJS 12-Oct-12 Proposal Report (Non-Def Plan)

**Report Date:** October 12, 2012 - 04:52 PM  
**Client:** Cimarex  
**Field:** NM Lea County (NAD 83)  
**Structure / Slot:** Cimarex Tres Equis 5 State #2Y / Cimarex Tres Equis 5 State #2Y  
**Well:** Cimarex Tres Equis 5 State #2Y  
**Borehole:** Original Borehole  
**UWI / API#:** Unknown / Unknown  
**Survey Name:** Cimarex Tres Equis 5 State #2Y Rev0 RJS 12-Oct-12  
**Survey Date:** October 12, 2012  
**Tort / AHD / DDI / ERD Ratio:** 90.002 ° / 4615.256 ft / 5.763 / 0.415  
**Coordinate Reference System:** NAD83 New Mexico State Plane, Eastern Zone, US Feet  
**Location Lat / Long:** N 32° 15' 11 03190", W 103° 35' 45.50749"  
**Location Grid N/E Y/X:** N 456580.900 ftUS, E 769282.700 ftUS  
**CRS Grid Convergence Angle:** 0.3935 °  
**Grid Scale Factor:** 0.9999686

**Survey / DLS Computation:** Minimum Curvature / Lubinski  
**Vertical Section Azimuth:** 180.756 ° (Grid North)  
**Vertical Section Origin:** 0.000 ft, 0.000 ft  
**TVD Reference Datum:** Ground Level  
**TVD Reference Elevation:** 3662.000 ft above MSL  
**Seabed / Ground Elevation:** 3662.000 ft above MSL  
**Magnetic Declination:** 7.537 °  
**Total Gravity Field Strength:** 999.1425 mgn (9.8 based)  
**Total Magnetic Field Strength:** 48486.266 nT  
**Magnetic Dip Angle:** 60.138 °  
**Declination Date:** October 12, 2012  
**Magnetic Declination Model:** BGGM 2012  
**North Reference:** Grid North  
**Grid Convergence Used:** 0.3935 °

**Total Corr Mag North->Grid North:** 7.1438 °

**Local Coord Referenced To:** Structure Reference Point

Comments	MD (ft)	Incl (°)	Azim Grid (°)	TVD (ft)	VSEC (ft)	NS (ft)	EW (ft)	DLS (°/100ft)	Northing (ftUS)	Easting (ftUS)	Latitude (N/S ° ' ")	Longitude (E/W ° ' ")
SHL Tres Equis 5 State #2Y	0.00	0.00	180.76	0.00	0.00	0.00	0.00	N/A	456580.90	769282.70	N 32 15 11.03	W 103 35 45.51
	100.00	0.00	180.76	100.00	0.00	0.00	0.00	0.00	456580.90	769282.70	N 32 15 11.03	W 103 35 45.51
	200.00	0.00	180.76	200.00	0.00	0.00	0.00	0.00	456580.90	769282.70	N 32 15 11.03	W 103 35 45.51
	300.00	0.00	180.76	300.00	0.00	0.00	0.00	0.00	456580.90	769282.70	N 32 15 11.03	W 103 35 45.51
	400.00	0.00	180.76	400.00	0.00	0.00	0.00	0.00	456580.90	769282.70	N 32 15 11.03	W 103 35 45.51
	500.00	0.00	180.76	500.00	0.00	0.00	0.00	0.00	456580.90	769282.70	N 32 15 11.03	W 103 35 45.51
	600.00	0.00	180.76	600.00	0.00	0.00	0.00	0.00	456580.90	769282.70	N 32 15 11.03	W 103 35 45.51
	700.00	0.00	180.76	700.00	0.00	0.00	0.00	0.00	456580.90	769282.70	N 32 15 11.03	W 103 35 45.51
	800.00	0.00	180.76	800.00	0.00	0.00	0.00	0.00	456580.90	769282.70	N 32 15 11.03	W 103 35 45.51
	900.00	0.00	180.76	900.00	0.00	0.00	0.00	0.00	456580.90	769282.70	N 32 15 11.03	W 103 35 45.51
	1000.00	0.00	180.76	1000.00	0.00	0.00	0.00	0.00	456580.90	769282.70	N 32 15 11.03	W 103 35 45.51
	1100.00	0.00	180.76	1100.00	0.00	0.00	0.00	0.00	456580.90	769282.70	N 32 15 11.03	W 103 35 45.51
	1200.00	0.00	180.76	1200.00	0.00	0.00	0.00	0.00	456580.90	769282.70	N 32 15 11.03	W 103 35 45.51
	1300.00	0.00	180.76	1300.00	0.00	0.00	0.00	0.00	456580.90	769282.70	N 32 15 11.03	W 103 35 45.51
	1400.00	0.00	180.76	1400.00	0.00	0.00	0.00	0.00	456580.90	769282.70	N 32 15 11.03	W 103 35 45.51
	1500.00	0.00	180.76	1500.00	0.00	0.00	0.00	0.00	456580.90	769282.70	N 32 15 11.03	W 103 35 45.51
	1600.00	0.00	180.76	1600.00	0.00	0.00	0.00	0.00	456580.90	769282.70	N 32 15 11.03	W 103 35 45.51
	1700.00	0.00	180.76	1700.00	0.00	0.00	0.00	0.00	456580.90	769282.70	N 32 15 11.03	W 103 35 45.51
	1800.00	0.00	180.76	1800.00	0.00	0.00	0.00	0.00	456580.90	769282.70	N 32 15 11.03	W 103 35 45.51
	1900.00	0.00	180.76	1900.00	0.00	0.00	0.00	0.00	456580.90	769282.70	N 32 15 11.03	W 103 35 45.51
	2000.00	0.00	180.76	2000.00	0.00	0.00	0.00	0.00	456580.90	769282.70	N 32 15 11.03	W 103 35 45.51
	2100.00	0.00	180.76	2100.00	0.00	0.00	0.00	0.00	456580.90	769282.70	N 32 15 11.03	W 103 35 45.51
	2200.00	0.00	180.76	2200.00	0.00	0.00	0.00	0.00	456580.90	769282.70	N 32 15 11.03	W 103 35 45.51
	2300.00	0.00	180.76	2300.00	0.00	0.00	0.00	0.00	456580.90	769282.70	N 32 15 11.03	W 103 35 45.51
	2400.00	0.00	180.76	2400.00	0.00	0.00	0.00	0.00	456580.90	769282.70	N 32 15 11.03	W 103 35 45.51

Comments	MD (ft)	Incl (°)	Azim Grid (°)	TVD (ft)	VSEC (ft)	NS (ft)	EW (ft)	DLS (°/100ft)	Northing (ftUS)	Easting (ftUS)	Latitude (N/S ° ' ")	Longitude (E/W ° ' ")
	2500.00	0.00	180.76	2500.00	0.00	0.00	0.00	0.00	456580.90	769282.70	N 32 15 11.03	W 103 35 45.51
	2600.00	0.00	180.76	2600.00	0.00	0.00	0.00	0.00	456580.90	769282.70	N 32 15 11.03	W 103 35 45.51
	2700.00	0.00	180.76	2700.00	0.00	0.00	0.00	0.00	456580.90	769282.70	N 32 15 11.03	W 103 35 45.51
	2800.00	0.00	180.76	2800.00	0.00	0.00	0.00	0.00	456580.90	769282.70	N 32 15 11.03	W 103 35 45.51
	2900.00	0.00	180.76	2900.00	0.00	0.00	0.00	0.00	456580.90	769282.70	N 32 15 11.03	W 103 35 45.51
	3000.00	0.00	180.76	3000.00	0.00	0.00	0.00	0.00	456580.90	769282.70	N 32 15 11.03	W 103 35 45.51
	3100.00	0.00	180.76	3100.00	0.00	0.00	0.00	0.00	456580.90	769282.70	N 32 15 11.03	W 103 35 45.51
	3200.00	0.00	180.76	3200.00	0.00	0.00	0.00	0.00	456580.90	769282.70	N 32 15 11.03	W 103 35 45.51
	3300.00	0.00	180.76	3300.00	0.00	0.00	0.00	0.00	456580.90	769282.70	N 32 15 11.03	W 103 35 45.51
	3400.00	0.00	180.76	3400.00	0.00	0.00	0.00	0.00	456580.90	769282.70	N 32 15 11.03	W 103 35 45.51
	3500.00	0.00	180.76	3500.00	0.00	0.00	0.00	0.00	456580.90	769282.70	N 32 15 11.03	W 103 35 45.51
	3600.00	0.00	180.76	3600.00	0.00	0.00	0.00	0.00	456580.90	769282.70	N 32 15 11.03	W 103 35 45.51
	3700.00	0.00	180.76	3700.00	0.00	0.00	0.00	0.00	456580.90	769282.70	N 32 15 11.03	W 103 35 45.51
	3800.00	0.00	180.76	3800.00	0.00	0.00	0.00	0.00	456580.90	769282.70	N 32 15 11.03	W 103 35 45.51
	3900.00	0.00	180.76	3900.00	0.00	0.00	0.00	0.00	456580.90	769282.70	N 32 15 11.03	W 103 35 45.51
	4000.00	0.00	180.76	4000.00	0.00	0.00	0.00	0.00	456580.90	769282.70	N 32 15 11.03	W 103 35 45.51
	4100.00	0.00	180.76	4100.00	0.00	0.00	0.00	0.00	456580.90	769282.70	N 32 15 11.03	W 103 35 45.51
	4200.00	0.00	180.76	4200.00	0.00	0.00	0.00	0.00	456580.90	769282.70	N 32 15 11.03	W 103 35 45.51
	4300.00	0.00	180.76	4300.00	0.00	0.00	0.00	0.00	456580.90	769282.70	N 32 15 11.03	W 103 35 45.51
	4400.00	0.00	180.76	4400.00	0.00	0.00	0.00	0.00	456580.90	769282.70	N 32 15 11.03	W 103 35 45.51
	4500.00	0.00	180.76	4500.00	0.00	0.00	0.00	0.00	456580.90	769282.70	N 32 15 11.03	W 103 35 45.51
	4600.00	0.00	180.76	4600.00	0.00	0.00	0.00	0.00	456580.90	769282.70	N 32 15 11.03	W 103 35 45.51
	4700.00	0.00	180.76	4700.00	0.00	0.00	0.00	0.00	456580.90	769282.70	N 32 15 11.03	W 103 35 45.51
	4800.00	0.00	180.76	4800.00	0.00	0.00	0.00	0.00	456580.90	769282.70	N 32 15 11.03	W 103 35 45.51
	4900.00	0.00	180.76	4900.00	0.00	0.00	0.00	0.00	456580.90	769282.70	N 32 15 11.03	W 103 35 45.51
	5000.00	0.00	180.76	5000.00	0.00	0.00	0.00	0.00	456580.90	769282.70	N 32 15 11.03	W 103 35 45.51
	5100.00	0.00	180.76	5100.00	0.00	0.00	0.00	0.00	456580.90	769282.70	N 32 15 11.03	W 103 35 45.51
	5200.00	0.00	180.76	5200.00	0.00	0.00	0.00	0.00	456580.90	769282.70	N 32 15 11.03	W 103 35 45.51
	5300.00	0.00	180.76	5300.00	0.00	0.00	0.00	0.00	456580.90	769282.70	N 32 15 11.03	W 103 35 45.51
	5400.00	0.00	180.76	5400.00	0.00	0.00	0.00	0.00	456580.90	769282.70	N 32 15 11.03	W 103 35 45.51
	5500.00	0.00	180.76	5500.00	0.00	0.00	0.00	0.00	456580.90	769282.70	N 32 15 11.03	W 103 35 45.51
	5600.00	0.00	180.76	5600.00	0.00	0.00	0.00	0.00	456580.90	769282.70	N 32 15 11.03	W 103 35 45.51
	5700.00	0.00	180.76	5700.00	0.00	0.00	0.00	0.00	456580.90	769282.70	N 32 15 11.03	W 103 35 45.51
	5800.00	0.00	180.76	5800.00	0.00	0.00	0.00	0.00	456580.90	769282.70	N 32 15 11.03	W 103 35 45.51
	5900.00	0.00	180.76	5900.00	0.00	0.00	0.00	0.00	456580.90	769282.70	N 32 15 11.03	W 103 35 45.51
	6000.00	0.00	180.76	6000.00	0.00	0.00	0.00	0.00	456580.90	769282.70	N 32 15 11.03	W 103 35 45.51
	6100.00	0.00	180.76	6100.00	0.00	0.00	0.00	0.00	456580.90	769282.70	N 32 15 11.03	W 103 35 45.51
	6200.00	0.00	180.76	6200.00	0.00	0.00	0.00	0.00	456580.90	769282.70	N 32 15 11.03	W 103 35 45.51
	6300.00	0.00	180.76	6300.00	0.00	0.00	0.00	0.00	456580.90	769282.70	N 32 15 11.03	W 103 35 45.51
	6400.00	0.00	180.76	6400.00	0.00	0.00	0.00	0.00	456580.90	769282.70	N 32 15 11.03	W 103 35 45.51
	6500.00	0.00	180.76	6500.00	0.00	0.00	0.00	0.00	456580.90	769282.70	N 32 15 11.03	W 103 35 45.51
	6600.00	0.00	180.76	6600.00	0.00	0.00	0.00	0.00	456580.90	769282.70	N 32 15 11.03	W 103 35 45.51
	6700.00	0.00	180.76	6700.00	0.00	0.00	0.00	0.00	456580.90	769282.70	N 32 15 11.03	W 103 35 45.51
	6800.00	0.00	180.76	6800.00	0.00	0.00	0.00	0.00	456580.90	769282.70	N 32 15 11.03	W 103 35 45.51
	6900.00	0.00	180.76	6900.00	0.00	0.00	0.00	0.00	456580.90	769282.70	N 32 15 11.03	W 103 35 45.51
	7000.00	0.00	180.76	7000.00	0.00	0.00	0.00	0.00	456580.90	769282.70	N 32 15 11.03	W 103 35 45.51
	7100.00	0.00	180.76	7100.00	0.00	0.00	0.00	0.00	456580.90	769282.70	N 32 15 11.03	W 103 35 45.51
	7200.00	0.00	180.76	7200.00	0.00	0.00	0.00	0.00	456580.90	769282.70	N 32 15 11.03	W 103 35 45.51

Comments	MD (ft)	Incl (°)	Azim Grid (°)	TVD (ft)	VSEC (ft)	NS (ft)	EW (ft)	DLS (°/100ft)	Northing (ftUS)	Easting (ftUS)	Latitude (N/S ° ' ")	Longitude (E/W ° ' ")
	7300.00	0.00	180.76	7300.00	0.00	0.00	0.00	0.00	456580.90	769282.70	N 32 15 11.03	W 103 35 45.51
	7400.00	0.00	180.76	7400.00	0.00	0.00	0.00	0.00	456580.90	769282.70	N 32 15 11.03	W 103 35 45.51
	7500.00	0.00	180.76	7500.00	0.00	0.00	0.00	0.00	456580.90	769282.70	N 32 15 11.03	W 103 35 45.51
	7600.00	0.00	180.76	7600.00	0.00	0.00	0.00	0.00	456580.90	769282.70	N 32 15 11.03	W 103 35 45.51
	7700.00	0.00	180.76	7700.00	0.00	0.00	0.00	0.00	456580.90	769282.70	N 32 15 11.03	W 103 35 45.51
	7800.00	0.00	180.76	7800.00	0.00	0.00	0.00	0.00	456580.90	769282.70	N 32 15 11.03	W 103 35 45.51
	7900.00	0.00	180.76	7900.00	0.00	0.00	0.00	0.00	456580.90	769282.70	N 32 15 11.03	W 103 35 45.51
	8000.00	0.00	180.76	8000.00	0.00	0.00	0.00	0.00	456580.90	769282.70	N 32 15 11.03	W 103 35 45.51
	8100.00	0.00	180.76	8100.00	0.00	0.00	0.00	0.00	456580.90	769282.70	N 32 15 11.03	W 103 35 45.51
	8200.00	0.00	180.76	8200.00	0.00	0.00	0.00	0.00	456580.90	769282.70	N 32 15 11.03	W 103 35 45.51
	8300.00	0.00	180.76	8300.00	0.00	0.00	0.00	0.00	456580.90	769282.70	N 32 15 11.03	W 103 35 45.51
	8400.00	0.00	180.76	8400.00	0.00	0.00	0.00	0.00	456580.90	769282.70	N 32 15 11.03	W 103 35 45.51
	8500.00	0.00	180.76	8500.00	0.00	0.00	0.00	0.00	456580.90	769282.70	N 32 15 11.03	W 103 35 45.51
	8600.00	0.00	180.76	8600.00	0.00	0.00	0.00	0.00	456580.90	769282.70	N 32 15 11.03	W 103 35 45.51
	8700.00	0.00	180.76	8700.00	0.00	0.00	0.00	0.00	456580.90	769282.70	N 32 15 11.03	W 103 35 45.51
	8800.00	0.00	180.76	8800.00	0.00	0.00	0.00	0.00	456580.90	769282.70	N 32 15 11.03	W 103 35 45.51
	8900.00	0.00	180.76	8900.00	0.00	0.00	0.00	0.00	456580.90	769282.70	N 32 15 11.03	W 103 35 45.51
	9000.00	0.00	180.76	9000.00	0.00	0.00	0.00	0.00	456580.90	769282.70	N 32 15 11.03	W 103 35 45.51
	9100.00	0.00	180.76	9100.00	0.00	0.00	0.00	0.00	456580.90	769282.70	N 32 15 11.03	W 103 35 45.51
	9200.00	0.00	180.76	9200.00	0.00	0.00	0.00	0.00	456580.90	769282.70	N 32 15 11.03	W 103 35 45.51
	9300.00	0.00	180.76	9300.00	0.00	0.00	0.00	0.00	456580.90	769282.70	N 32 15 11.03	W 103 35 45.51
	9400.00	0.00	180.76	9400.00	0.00	0.00	0.00	0.00	456580.90	769282.70	N 32 15 11.03	W 103 35 45.51
	9500.00	0.00	180.76	9500.00	0.00	0.00	0.00	0.00	456580.90	769282.70	N 32 15 11.03	W 103 35 45.51
	9600.00	0.00	180.76	9600.00	0.00	0.00	0.00	0.00	456580.90	769282.70	N 32 15 11.03	W 103 35 45.51
	9700.00	0.00	180.76	9700.00	0.00	0.00	0.00	0.00	456580.90	769282.70	N 32 15 11.03	W 103 35 45.51
	9800.00	0.00	180.76	9800.00	0.00	0.00	0.00	0.00	456580.90	769282.70	N 32 15 11.03	W 103 35 45.51
	9900.00	0.00	180.76	9900.00	0.00	0.00	0.00	0.00	456580.90	769282.70	N 32 15 11.03	W 103 35 45.51
	10000.00	0.00	180.76	10000.00	0.00	0.00	0.00	0.00	456580.90	769282.70	N 32 15 11.03	W 103 35 45.51
	10100.00	0.00	180.76	10100.00	0.00	0.00	0.00	0.00	456580.90	769282.70	N 32 15 11.03	W 103 35 45.51
	10200.00	0.00	180.76	10200.00	0.00	0.00	0.00	0.00	456580.90	769282.70	N 32 15 11.03	W 103 35 45.51
	10300.00	0.00	180.76	10300.00	0.00	0.00	0.00	0.00	456580.90	769282.70	N 32 15 11.03	W 103 35 45.51
	10400.00	0.00	180.76	10400.00	0.00	0.00	0.00	0.00	456580.90	769282.70	N 32 15 11.03	W 103 35 45.51
	10500.00	0.00	180.76	10500.00	0.00	0.00	0.00	0.00	456580.90	769282.70	N 32 15 11.03	W 103 35 45.51
	10600.00	0.00	180.76	10600.00	0.00	0.00	0.00	0.00	456580.90	769282.70	N 32 15 11.03	W 103 35 45.51
KOP - Build @ 12°/100' DLS	10647.50	0.00	180.76	10647.50	0.00	0.00	0.00	0.00	456580.90	769282.70	N 32 15 11.03	W 103 35 45.51
	10700.00	6.30	180.76	10699.89	2.88	-2.88	-0.04	12.00	456578.02	769282.66	N 32 15 11.00	W 103 35 45.51
	10800.00	18.30	180.76	10797.42	24.15	-24.14	-0.32	12.00	456556.76	769282.38	N 32 15 10.79	W 103 35 45.51
	10900.00	30.30	180.76	10888.40	65.22	-65.21	-0.86	12.00	456515.69	769281.84	N 32 15 10.39	W 103 35 45.52
	11000.00	42.30	180.76	10968.84	124.31	-124.30	-1.64	12.00	456456.61	769281.06	N 32 15 9.80	W 103 35 45.54
	11100.00	54.30	180.76	11035.25	198.83	-198.81	-2.62	12.00	456382.09	769280.08	N 32 15 9.06	W 103 35 45.55
	11200.00	66.30	180.76	11084.71	285.53	-285.51	-3.76	12.00	456295.40	769278.94	N 32 15 8.21	W 103 35 45.57
	11300.00	78.29	180.76	11115.07	380.62	-380.59	-5.02	12.00	456200.32	769277.68	N 32 15 7.27	W 103 35 45.60
Landing Point	11397.56	90.00	180.76	11125.00	477.50	-477.46	-6.29	12.00	456103.46	769276.41	N 32 15 6.31	W 103 35 45.62
	11400.00	90.00	180.76	11125.00	479.94	-479.90	-6.32	0.00	456101.01	769276.38	N 32 15 6.28	W 103 35 45.62
	11500.00	90.00	180.76	11125.00	579.94	-579.89	-7.64	0.00	456001.02	769275.06	N 32 15 5.29	W 103 35 45.64
	11600.00	90.00	180.76	11125.00	679.94	-679.89	-8.96	0.00	455901.04	769273.74	N 32 15 4.31	W 103 35 45.67
	11700.00	90.00	180.76	11125.00	779.94	-779.88	-10.28	0.00	455801.05	769272.42	N 32 15 3.32	W 103 35 45.69

Comments	MD (ft)	Incl (°)	Azim Grid (°)	TVD (ft)	VSEC (ft)	NS (ft)	EW (ft)	DLS (°/100ft)	Northing (ftUS)	Easting (ftUS)	Latitude (N/S ° ' ")	Longitude (E/W ° ' ")
	11800.00	90.00	180.76	11125.00	879.94	-879.87	-11.60	0.00	455701.06	769271.10	N 32 15 2 33	W 103 35 45.71
	11900.00	90.00	180.76	11125.00	979.94	-979.86	-12.91	0.00	455601.07	769269.79	N 32 15 1.34	W 103 35 45.74
	12000.00	90.00	180.76	11125.00	1079.94	-1079.85	-14.23	0.00	455501.09	769268.47	N 32 15 0.35	W 103 35 45.76
	12100.00	90.00	180.76	11125.00	1179.94	-1179.84	-15.55	0.00	455401.10	769267.15	N 32 14 59.36	W 103 35 45.78
	12200.00	90.00	180.76	11125.00	1279.94	-1279.83	-16.87	0.00	455301.11	769265.83	N 32 14 58.37	W 103 35 45.81
	12300.00	90.00	180.76	11125.00	1379.94	-1379.82	-18.19	0.00	455201.12	769264.51	N 32 14 57.38	W 103 35 45.83
	12400.00	90.00	180.76	11125.00	1479.94	-1479.82	-19.51	0.00	455101.13	769263.19	N 32 14 56.39	W 103 35 45.85
	12500.00	90.00	180.76	11125.00	1579.94	-1579.81	-20.82	0.00	455001.15	769261.88	N 32 14 55.40	W 103 35 45.88
	12600.00	90.00	180.76	11125.00	1679.94	-1679.80	-22.14	0.00	454901.16	769260.56	N 32 14 54.41	W 103 35 45.90
	12700.00	90.00	180.76	11125.00	1779.94	-1779.79	-23.46	0.00	454801.17	769259.24	N 32 14 53.42	W 103 35 45.92
	12800.00	90.00	180.76	11125.00	1879.94	-1879.78	-24.78	0.00	454701.18	769257.92	N 32 14 52.43	W 103 35 45.95
	12900.00	90.00	180.76	11125.00	1979.94	-1979.77	-26.10	0.00	454601.19	769256.60	N 32 14 51.44	W 103 35 45.97
	13000.00	90.00	180.76	11125.00	2079.94	-2079.76	-27.42	0.00	454501.21	769255.28	N 32 14 50.45	W 103 35 45.99
	13100.00	90.00	180.76	11125.00	2179.94	-2179.76	-28.74	0.00	454401.22	769253.96	N 32 14 49.47	W 103 35 46.02
	13200.00	90.00	180.76	11125.00	2279.94	-2279.75	-30.06	0.00	454301.23	769252.64	N 32 14 48.48	W 103 35 46.04
	13300.00	90.00	180.76	11125.00	2379.94	-2379.74	-31.38	0.00	454201.24	769251.32	N 32 14 47.49	W 103 35 46.06
	13400.00	90.00	180.76	11125.00	2479.94	-2479.73	-32.70	0.00	454101.25	769250.00	N 32 14 46.50	W 103 35 46.09
	13500.00	90.00	180.76	11125.00	2579.94	-2579.72	-34.02	0.00	454001.27	769248.68	N 32 14 45.51	W 103 35 46.11
	13600.00	90.00	180.76	11125.00	2679.94	-2679.71	-35.34	0.00	453901.28	769247.36	N 32 14 44.52	W 103 35 46.13
	13700.00	90.00	180.76	11125.00	2779.94	-2779.70	-36.66	0.00	453801.29	769246.04	N 32 14 43.53	W 103 35 46.16
	13800.00	90.00	180.76	11125.00	2879.94	-2879.69	-37.98	0.00	453701.30	769244.72	N 32 14 42.54	W 103 35 46.18
	13900.00	90.00	180.76	11125.00	2979.94	-2979.69	-39.30	0.00	453601.31	769243.40	N 32 14 41.55	W 103 35 46.20
	14000.00	90.00	180.76	11125.00	3079.94	-3079.68	-40.62	0.00	453501.33	769242.08	N 32 14 40.56	W 103 35 46.23
	14100.00	90.00	180.76	11125.00	3179.94	-3179.67	-41.94	0.00	453401.34	769240.76	N 32 14 39.57	W 103 35 46.25
	14200.00	90.00	180.76	11125.00	3279.94	-3279.66	-43.26	0.00	453301.35	769239.44	N 32 14 38.58	W 103 35 46.27
	14300.00	90.00	180.76	11125.00	3379.94	-3379.65	-44.58	0.00	453201.36	769238.12	N 32 14 37.59	W 103 35 46.30
	14400.00	90.00	180.76	11125.00	3479.94	-3479.64	-45.90	0.00	453101.37	769236.80	N 32 14 36.60	W 103 35 46.32
	14500.00	90.00	180.76	11125.00	3579.94	-3579.63	-47.22	0.00	453001.39	769235.48	N 32 14 35.62	W 103 35 46.34
	14600.00	90.00	180.76	11125.00	3679.94	-3679.62	-48.54	0.00	452901.40	769234.16	N 32 14 34.63	W 103 35 46.37
	14700.00	90.00	180.76	11125.00	3779.94	-3779.62	-49.86	0.00	452801.41	769232.84	N 32 14 33.64	W 103 35 46.39
	14800.00	90.00	180.76	11125.00	3879.94	-3879.61	-51.18	0.00	452701.42	769231.52	N 32 14 32.65	W 103 35 46.41
	14900.00	90.00	180.76	11125.00	3979.94	-3979.60	-52.51	0.00	452601.43	769230.20	N 32 14 31.66	W 103 35 46.44
	15000.00	90.00	180.76	11125.00	4079.94	-4079.59	-53.83	0.00	452501.45	769228.87	N 32 14 30.67	W 103 35 46.46
	15100.00	90.00	180.76	11125.00	4179.94	-4179.58	-55.15	0.00	452401.46	769227.55	N 32 14 29.68	W 103 35 46.48
	15200.00	90.00	180.76	11125.00	4279.94	-4279.57	-56.47	0.00	452301.47	769226.23	N 32 14 28.69	W 103 35 46.51
	15300.00	90.00	180.76	11125.00	4379.94	-4379.56	-57.79	0.00	452201.48	769224.91	N 32 14 27.70	W 103 35 46.53
	15400.00	90.00	180.76	11125.00	4479.94	-4479.55	-59.11	0.00	452101.49	769223.59	N 32 14 26.71	W 103 35 46.55
	15500.00	90.00	180.76	11125.00	4579.94	-4579.55	-60.44	0.00	452001.51	769222.27	N 32 14 25.72	W 103 35 46.58
Cimarex Tres Equis 5 State #2Y PBHL	15535.31	90.00	180.76	11125.00	4615.26	-4614.85	-60.90	0.00	451966.20	769221.80	N 32 14 25.37	W 103 35 46.59

Survey Type: Non-Def Plan

Survey Error Model: ISCWSA Rev 0 \*\*\* 3-D 95 000% Confidence 2 7955 sigma  
Survey Program:

Comments	MD (ft)	Incl (°)	Azim Grid (°)	TVD (ft)	VSEC (ft)	NS (ft)	EW (ft)	DLS (°/100ft)	Northing (ftUS)	Easting (ftUS)	Latitude (N/S ° ' ")	Longitude (E/W ° ' ")
Description	MD From (ft)		MD To (ft)	EOU Freq (ft)		Hole Size (in)	Casing Diameter (in)	Survey Tool Type	Borehole / Survey			
	0.000		10600.000		1/100.000	30.000	30.000	SLB_NSG+MSHOT	Original Borehole / Cimarex Tres Equis 5 State #2Y Rev0 RJS 12-			
	10600.000		15535.311		1/100.000	30.000	30.000	SLB_MWD-STD	Original Borehole / Cimarex Tres Equis 5 State #2Y Rev0 RJS 12-			



**Cimarex Tres Equis 5 State #2Y Rev0 RJS 12-Oct-12 Proposal Report**  
(Non-Def Plan)



<b>Report Date:</b>	October 12, 2012 - 04 10 PM	<b>Survey / DLS Computation</b>	Minimum Curvature / Lubinski
<b>Client:</b>	Cimarex	<b>Vertical Section Azimuth:</b>	180 756 ° (Gnd North)
<b>Field:</b>	NM Lea County (NAD 83)	<b>Vertical Section Origin:</b>	0 000 ft, 0 000 ft
<b>Structure / Slot:</b>	TBD / Cimarex Tres Equis 5 State #2Y	<b>TVD Reference Datum:</b>	Ground Level
<b>Well:</b>	Cimarex Tres Equis 5 State #2Y	<b>TVD Reference Elevation:</b>	3662 000 ft above MSL
<b>Borehole:</b>	Original Borehole	<b>Seabed / Ground Elevation:</b>	3662 000 ft above MSL
<b>UWI / API#:</b>	Unknown / Unknown	<b>Magnetic Declination:</b>	7 537 °
<b>Survey Name:</b>	Cimarex Tres Equis 5 State #2Y Rev0 RJS 12-Oct-12	<b>Total Gravity Field Strength:</b>	999 1425 mgn (9.8 based)
<b>Survey Date:</b>	October 12, 2012	<b>Total Magnetic Field Strength:</b>	48466 268 nT
<b>Ten / AHD / DDI / ERD Ratio:</b>	90 002 / 4815 258 ft / 5 783 / 0 415	<b>Magnetic Dip Angle:</b>	60 138 °
<b>Coordinate Reference System:</b>	NAD83 New Mexico State Plane, Eastem Zone US Feet	<b>Declination Date:</b>	October 12, 2012
<b>Location Lat / Long:</b>	N 32° 15' 11 03190", W 103° 35' 45 50749"	<b>Magnetic Declination Model:</b>	BGG11.2012
<b>Location Grid N/E Y/X:</b>	N 456580 900 NUS, E 769282 700 NUS	<b>North Reference:</b>	Gnd North
<b>CRS Grid Convergence Angle:</b>	0 3935 °	<b>Grid Convergence Used:</b>	0 3935 °
<b>Grid Scale Factor:</b>	0 9999886	<b>Total Corr Mag North-&gt;Grid North:</b>	7.1438 °

Local Coord Referenced To: Structure Reference Point

Comments	MD (ft)	Incl (°)	Azim Grid (°)	TVD (ft)	VSEC (ft)	NS (ft)	EW (ft)	Northing (ftUS)	Easting (ftUS)	Latitude (NS ° ' '')	Longitude (EAW ° ' '')	Closure (ft)	Closure Azimuth (°)	DLS (ft/100ft)
SHL Tres Equis 5 State #2Y	0 00	0 00	180 76	0 00	0 00	0 00	0 00	456580 90	769282 70	N 32 15 11 03	W 103 35 45 51	0 00	0 00	N/A
KOP - Build @ 12"/100' DLS Landing Point	10647 50	0 00	180 /6	10647 50	0 00	0 00	0 00	456580 90	769282 70	N 32 15 11 03	W 103 35 45 51	0 00	0 00	0 00
Cimarex Tres Equis 5 State #2Y PBHL	11397 56	90 00	180 76	11125 00	477 50	-477 46	-6 29	456103 46	769276 41	N 32 15 6 31	W 103 35 45 62	477 50	180 76	12 00
	15535 31	80 00	180 76	11125 00	4615 26	-4614 85	-60 90	451866 20	769221 80	N 32 14 25 37	W 103 35 46 59	4615 26	180 76	0 00

Survey Type: Non-Def Plan

Survey Error Model: ISCWSA Rev 0 \*\*\* 3 D 55 000% Confidence 2 7955 sigma

Description	MD From (ft)	MD To (ft)	EQU Freq (ft)	Hole Size (in)	Casing Diameter (in)	Survey Tool Type	Borehole / Survey
	0 000	10600 000		1/100 000	30 000	30 000	SLB_HSG+MSHOT
	10600 000	15535 311		1/100 000	30 000	30 000	SLB_MWD-STD