

District I
1625 N French Dr., Hobbs, NM 88240
Phone (575) 393-6161 Fax (575) 393-0720
District II
811 S First St., Artesia, NM 88210
Phone (575) 748-1283 Fax (575) 748-9720
District III
1000 Rio Brazos Road, Aztec, NM 87410
Phone (505) 334-6178 Fax (505) 334-6170
District IV
1220 S St Francis Dr., Santa Fe, NM 87505
Phone (505) 476-3460 Fax (505) 476-3462

State of New Mexico
Energy, Minerals & Natural Resources Department
HOBBS OCD
OIL CONSERVATION DIVISION
1220 South St. Francis Dr.
Santa Fe, NM 87505

Form C-102
Revised August 1, 2011
Submit one copy to appropriate
District Office

OCT 11 2012

AMENDED REPORT

RECEIVED

WELL LOCATION AND ACREAGE DEDICATION PLAT

API Number 30-025-40816		Pool Code 31920	Pool Name HOBBS; GRAYBURG-SAN ANDRES
Property Code 19520	Property Name NORTH HOBBS G/SA UNIT		Well Number 831
OGRID No. 157984	Operator Name OCCIDENTAL PERMIAN LTD.		Elevation 3679.4'

Surface Location

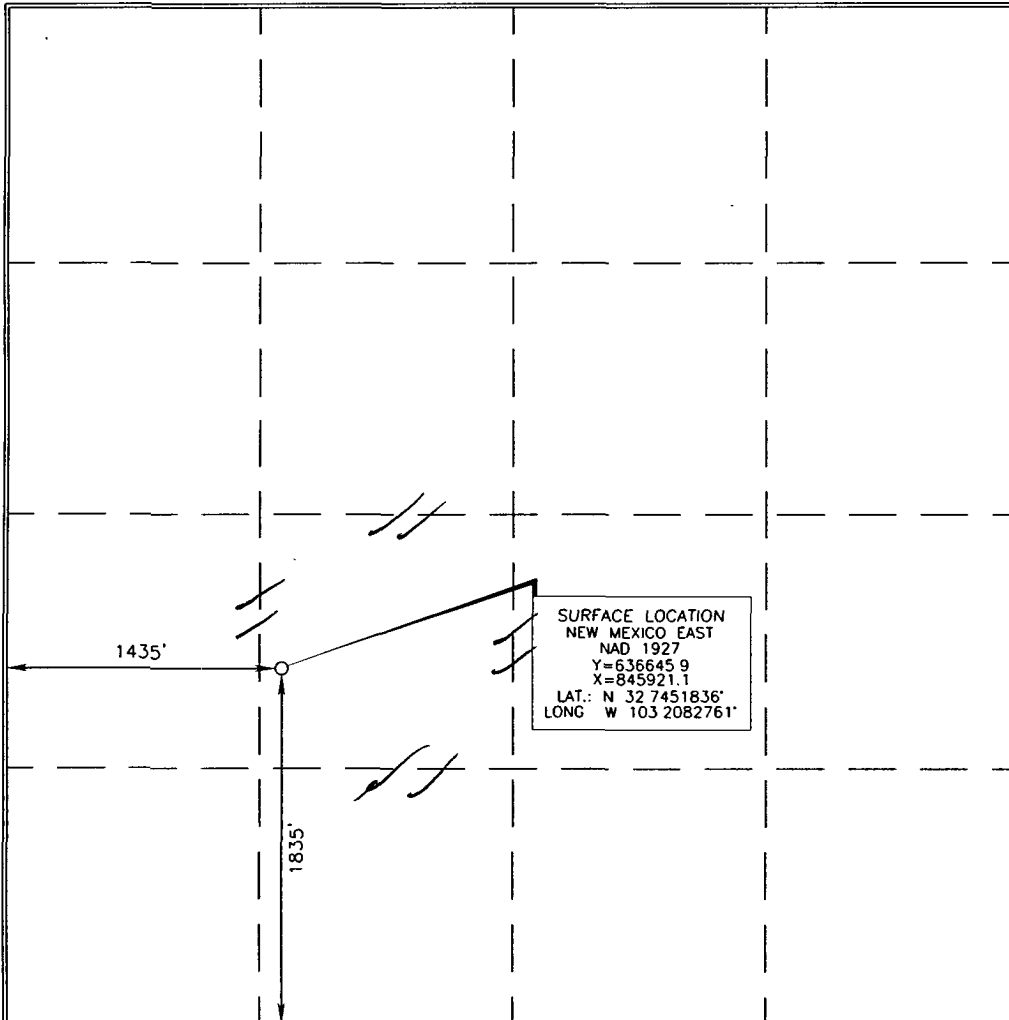
UL or lot no.	Section	Township	Range	Lot Idn	Feet from the	North/South line	Feet from the	East/West line	County
K	13	18 SOUTH	37 EAST, N.M.P.M.		1835'	SOUTH	1435'	WEST	LEA

Bottom Hole Location If Different From Surface

UL or lot no.	Section	Township	Range	Lot Idn	Feet from the	North/South line	Feet from the	East/West line	County

Dedicated Acres 40	Joint or Infill I	Consolidation Code	Order No.
-----------------------	----------------------	--------------------	-----------

No allowable will be assigned to this completion until all interests have been consolidated or a non-standard unit has been approved by the division.



OPERATOR CERTIFICATION

I hereby certify that the information contained herein is true and complete to the best of my knowledge and belief, and that this organization either owns a working interest or unleased mineral interest in the land including the proposed bottom hole location or has a right to drill this well at this location pursuant to a contract with an owner of such a mineral or working interest, or to a voluntary pooling agreement or a compulsory pooling order heretofore entered by the division.

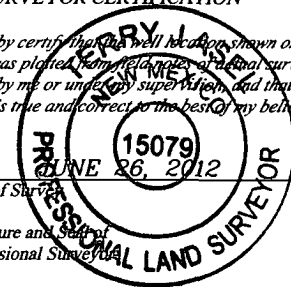
Mark Stephens 10/9/12
Signature Date

Mark Stephens
Printed Name

Mark Stephens@oxy.com
E-mail Address

SURVEYOR CERTIFICATION

I hereby certify that the well location shown on this plat was plotted from field notes and final surveys made by me or under my supervision, and that the same is true and correct to the best of my belief.



Date of Survey

Signature and Seal of Professional Surveyor

Terry J. Paul 8/6/2012
Certificate Number 15079

WO# 120626WL-b (KA)

OCT 16 2012