

John H. Hendrix, Corp.
PO Box 910
Eunice, NM 88231

Mr. Buddy Hill
NMOCD
Hobbs, NM
Re : Inspection # iLWH0511539306

Dear Buddy :

Please be advised that on 5/9/05, we rigged up on our Britt B 18 # 5 well, which is located just southwest of Monument (E-18-20-37, API # 30-025-06158-00-00). We pulled all rods and tubing, then ran and set a retrievable bridge plug @ 3425'. We then pulled one joint and set a Model R double grip packer @ 3395'. The tubing, packer, and bridge plug tested good to 1000# with no leak off. We then released the packer, and displaced the hole with packer fluid. After displacing and loading the hole, the BOP was closed, then the casing / tubing annulus was pressure tested to 520# for 30 minutes with no leak off. During the pressure test, both the intermediate and surface risers were open. An expansion volume of clear water was noted out of the intermediate riser, however, that volume of water amounted to only about 2 gallons. The intermediate riser flow ceased as soon as target pressure was obtained on the production casing.

Since the BLM requires a 30 minute test, rather than the 15 minute test that is required by the OCD, we called a BLM rep to witness the test. Patricia Hutchins was on location before and during testing, and signed off on the chart. I am forwarding you a copy of the chart with this letter.

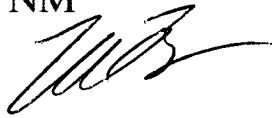


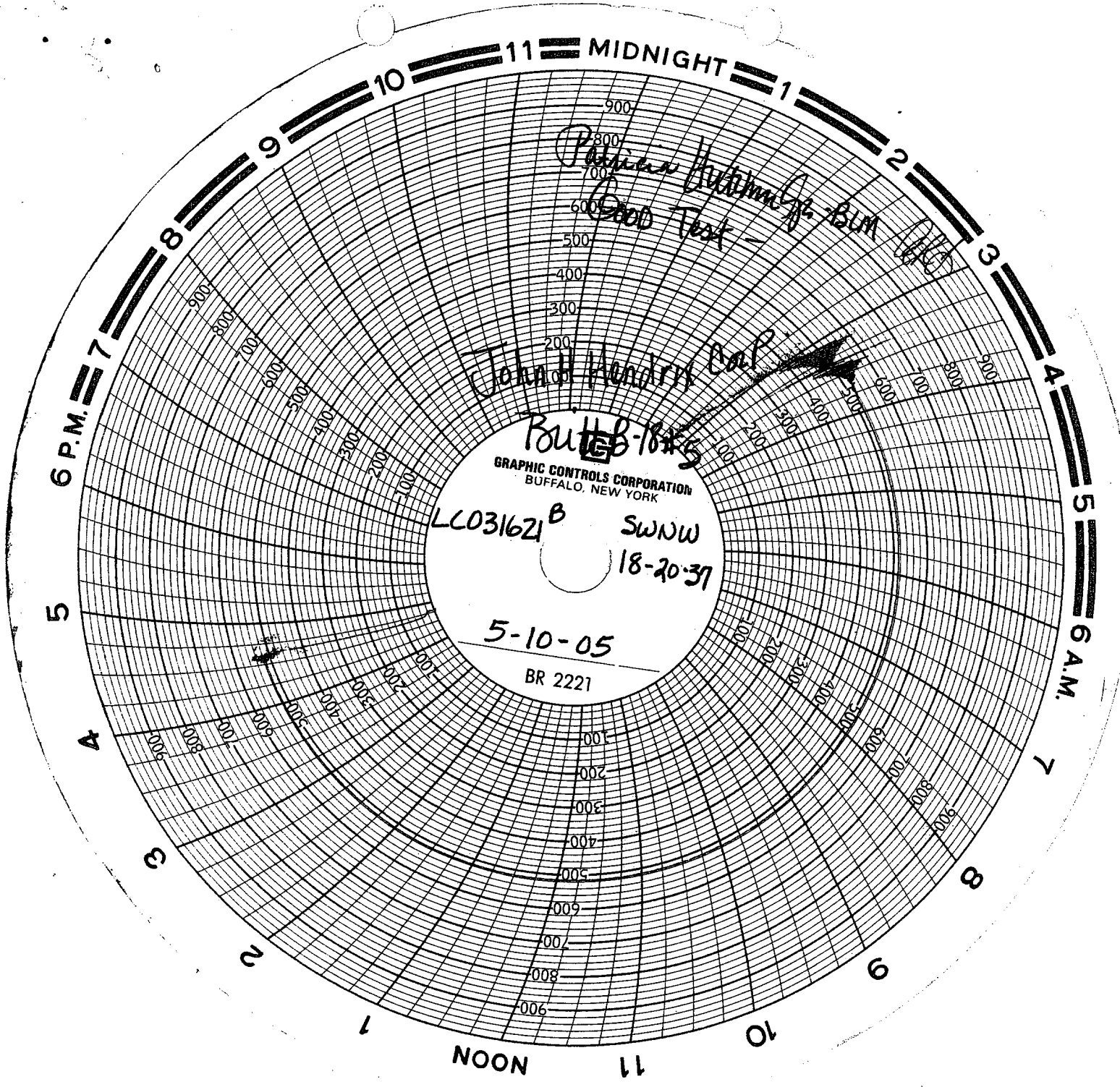
Page 2

Also, please be advised that we are in receipt of your letter requesting similar tests on our Britt B 18 # 1 and # 2 wells. We will do those as soon as we are able to schedule rig time.

Thank you for working with us on this project.

Marvin Burrows
JHH, Corp.
Eunice, NM





John H. Hendry
 Butter-1845
 GRAPHIC CONTROLS CORPORATION
 BUFFALO, NEW YORK
 LC031621 B
 SWNW
 18-20-37
 5-10-05
 BR 2221

Patricia Anderson
 Good Test
 JUN 18 1905

