

District I
1623 N. French Dr., Hobbs, NM 88240
Phone: (575) 393-6161 Fax: (575) 393-0720
District II
511 S. First St., Artesia, NM 88210
Phone: (575) 748-1233 Fax: (575) 748-0720
District III
1000 Rio Brazos Road, Aztec, NM 87410
Phone: (505) 334-6173 Fax: (505) 331-6170
District IV
1220 S. St. Francis Dr., Santa Fe, NM 87505
Phone: (505) 476-1460 Fax: (505) 476-3462

State of New Mexico
Energy, Minerals & Natural Resources Department
OIL CONSERVATION DIVISION
1220 South St. Francis Dr.
Santa Fe, NM 87505

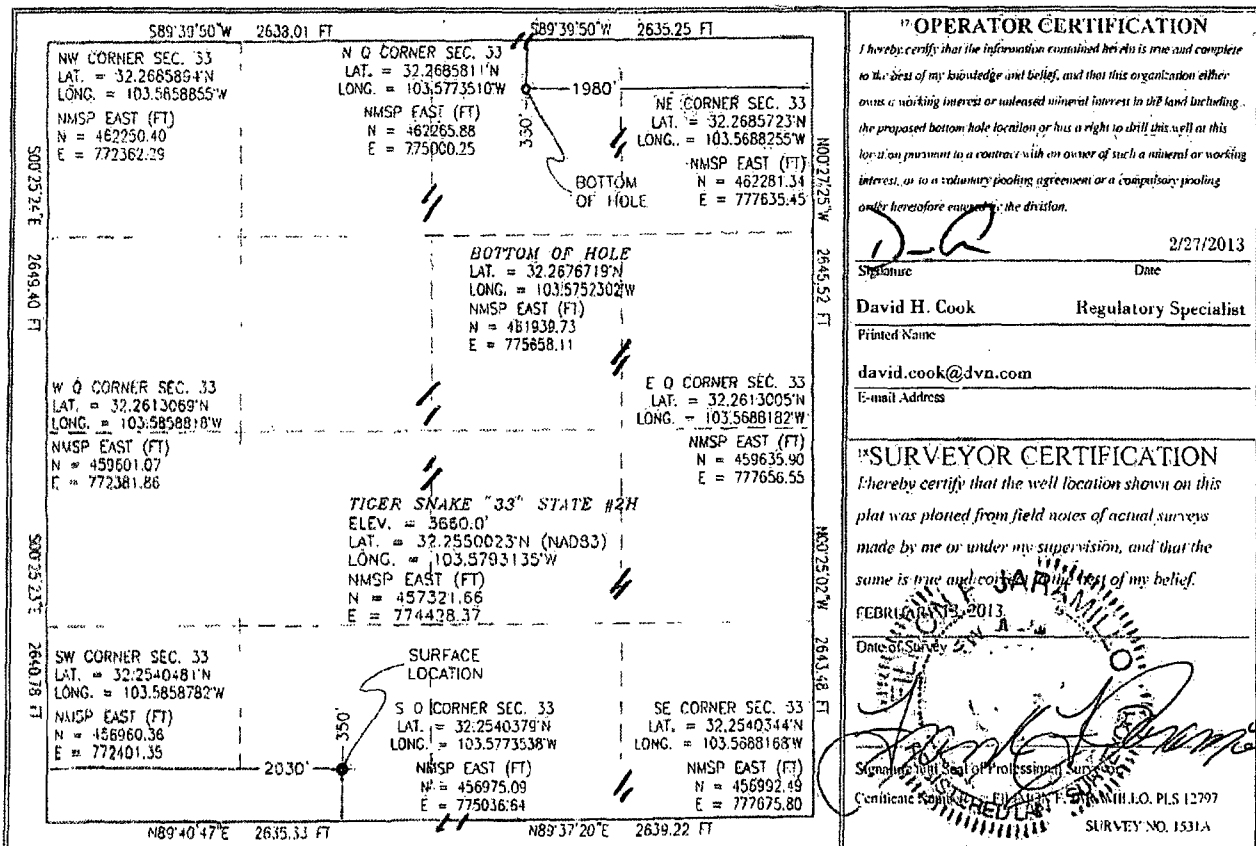
Form C-102
Revised August 1, 2011
Submit one copy to appropriate
District Office

AMENDED REPORT

WELL LOCATION AND ACREAGE DEDICATION PLAT

¹ API Number 30025-41027		² Pool Code 59900		³ Pool Name TRIPLE X; BONE SPRING					
⁴ Property Code 39750		⁵ Property Name TIGER SNAKE "33" STATE			⁶ Well Number 2H				
⁷ OGRID No. 6137		⁸ Operator Name DEVON ENERGY PRODUCTION COMPANY, L.P.			⁹ Elevation 3660.0				
¹⁰ Surface Location									
U.I. or lot no. N	Section 33	Township 23 S	Range 33 E	Lot Idn	Feet from the 350	North/South line SOUTH	Feet from the 2030	East/West line WEST	County LEA
¹¹ Bottom Hole Location If Different From Surface									
U.I. or lot no. B	Section 33	Township 23 S	Range 33 E	Lot Idn	Feet from the 330	North/South line NORTH	Feet from the 1980	East/West line EAST	County LEA
¹² Dedicated Acres 200		¹³ Joint or Infill		¹⁴ Consolidation Code		¹⁵ Order No.			

No allowable will be assigned to this completion until all interests have been consolidated or a non-standard unit has been approved by the division.

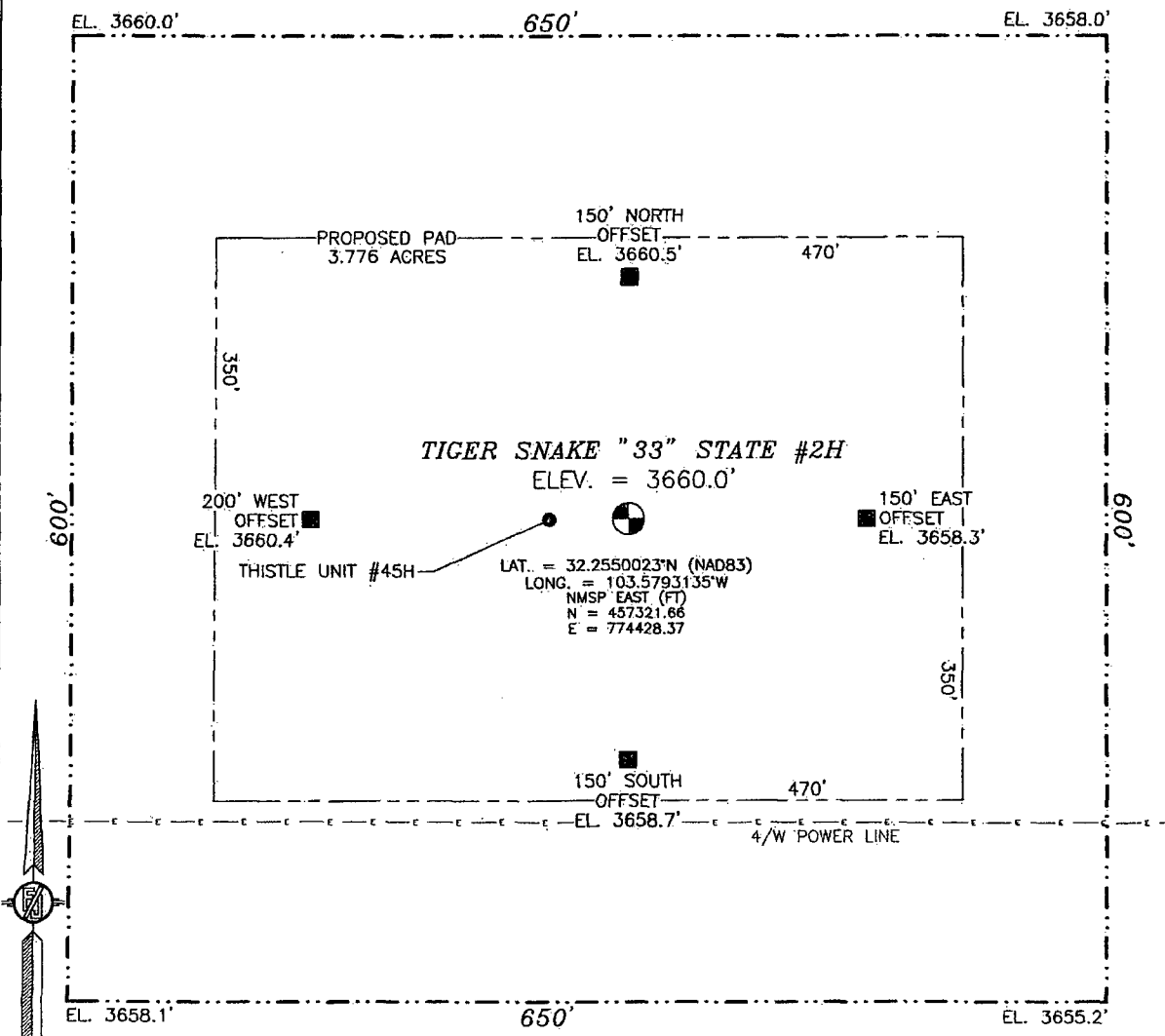


PP: 200 FSL & 1980 FEL; 33-23S-33E

ELG 3-5-2013

MAR 05 2013

SECTION 33, TOWNSHIP 23 SOUTH, RANGE 33 EAST, N.M.P.M.
LEA COUNTY, STATE OF NEW MEXICO



010 50 100 200
SCALE 1" = 100'

DIRECTIONS TO LOCATION
FROM THE INTERSECTION OF STATE HIGHWAY 128 AND BRINNSTOOL ROAD GO NORTH ON BRINNSTOOL ROAD APPROX. 3.0 MILES, CROSS CATTLE GUARD ON LEFT SIDE (WEST). TURN ON LEASE ROAD (WEST) GO APPROX. 0.1 MILES TO AN EXISTING PAD FOR THE DEVON THISTLE UNIT #17H ON THE NORTHWEST CORNER OF PAD. IS A LEASE ROAD GOING WEST, GO APPROX. 0.3 MILES TO LOCATION NORTH OF ROAD.

SEC 33
SEC 4

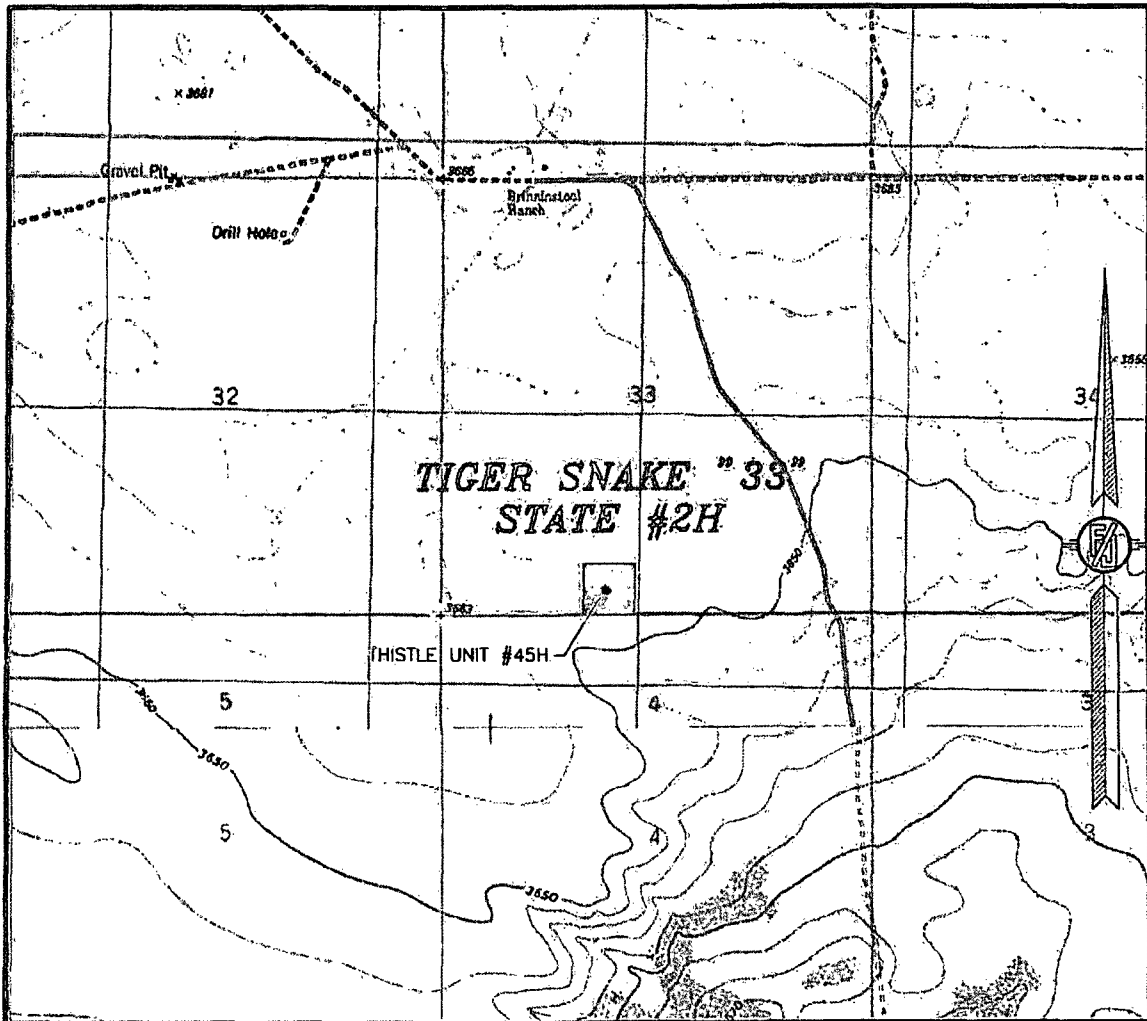
DEVON ENERGY PRODUCTION COMPANY, L.P.
TIGER SNAKE "33" STATE #2H
LOCATED 350 FT. FROM THE SOUTH LINE
AND 2030 FT. FROM THE WEST LINE OF
SECTION 33, TOWNSHIP 23 SOUTH,
RANGE 33 EAST, N.M.P.M.
LEA COUNTY, STATE OF NEW MEXICO

FEBRUARY 13, 2013

SURVEY NO. 1531A

MADRON SURVEYING, INC. 301 SOUTH CANAL (575) 234-3341 CARLSBAD, NEW MEXICO

SECTION 33, TOWNSHIP 23 SOUTH, RANGE 33 EAST, N.M.P.M.
 LEA COUNTY, STATE OF NEW MEXICO
 LOCATION VERIFICATION MAP



USGS QUAD MAP:
 TIP TOP WELLS

NOT TO SCALE

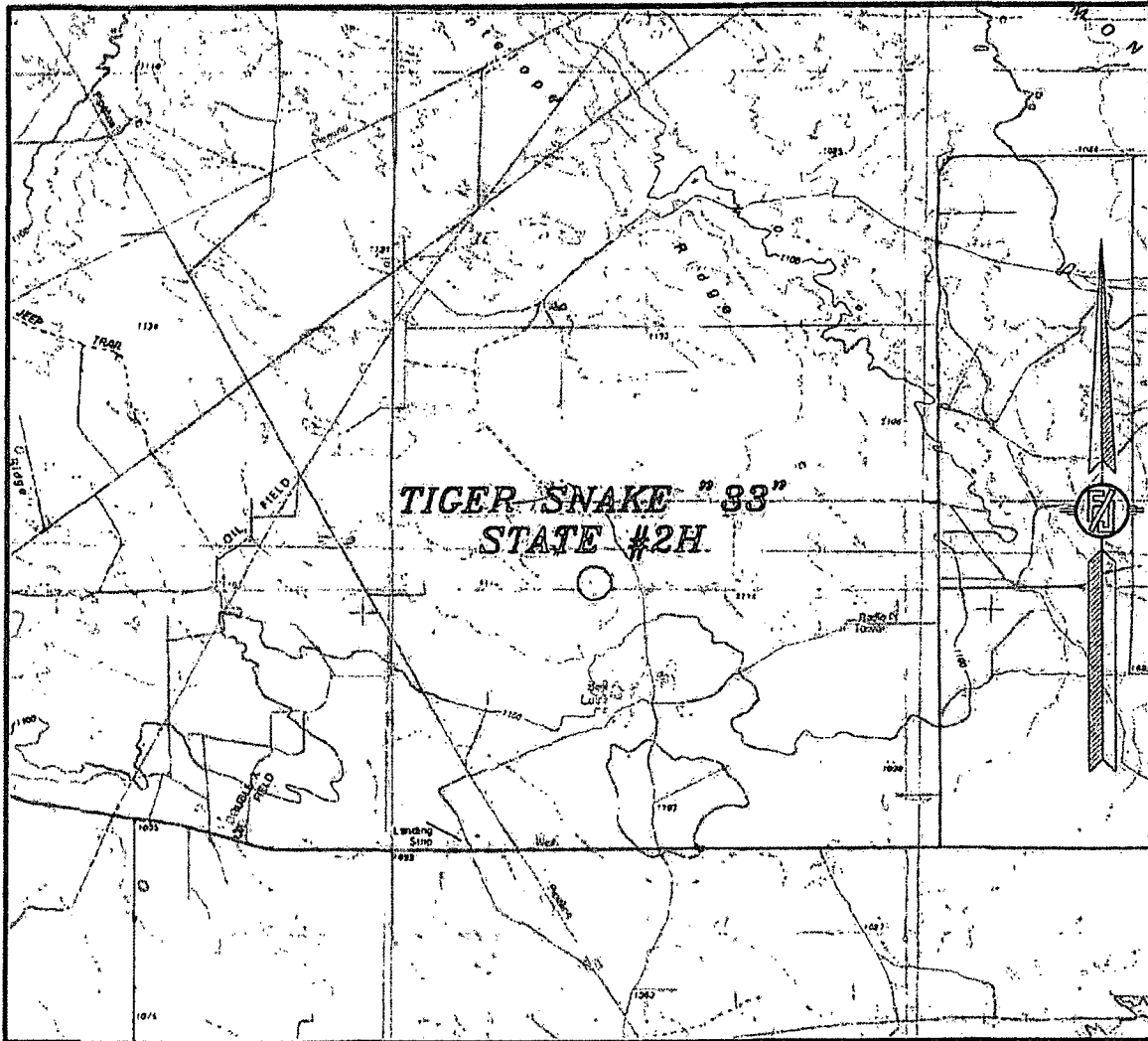
DEVON ENERGY PRODUCTION COMPANY, L.P.
TIGER SNAKE "33" STATE #2H
 LOCATED 350 FT. FROM THE SOUTH LINE
 AND 2030 FT. FROM THE WEST LINE OF
 SECTION 33, TOWNSHIP 23 SOUTH,
 RANGE 33 EAST, N.M.P.M.
 LEA COUNTY, STATE OF NEW MEXICO

FEBRUARY 13, 2013

SURVEY NO. 1531A

MADRON SURVEYING, INC. 301 SOUTH CANAL CARLSBAD, NEW MEXICO
 (575) 234-3341

SECTION 33, TOWNSHIP 23 SOUTH, RANGE 33 EAST, N.M.P.M.
LEA COUNTY, STATE OF NEW MEXICO
VICINITY MAP



NOT TO SCALE

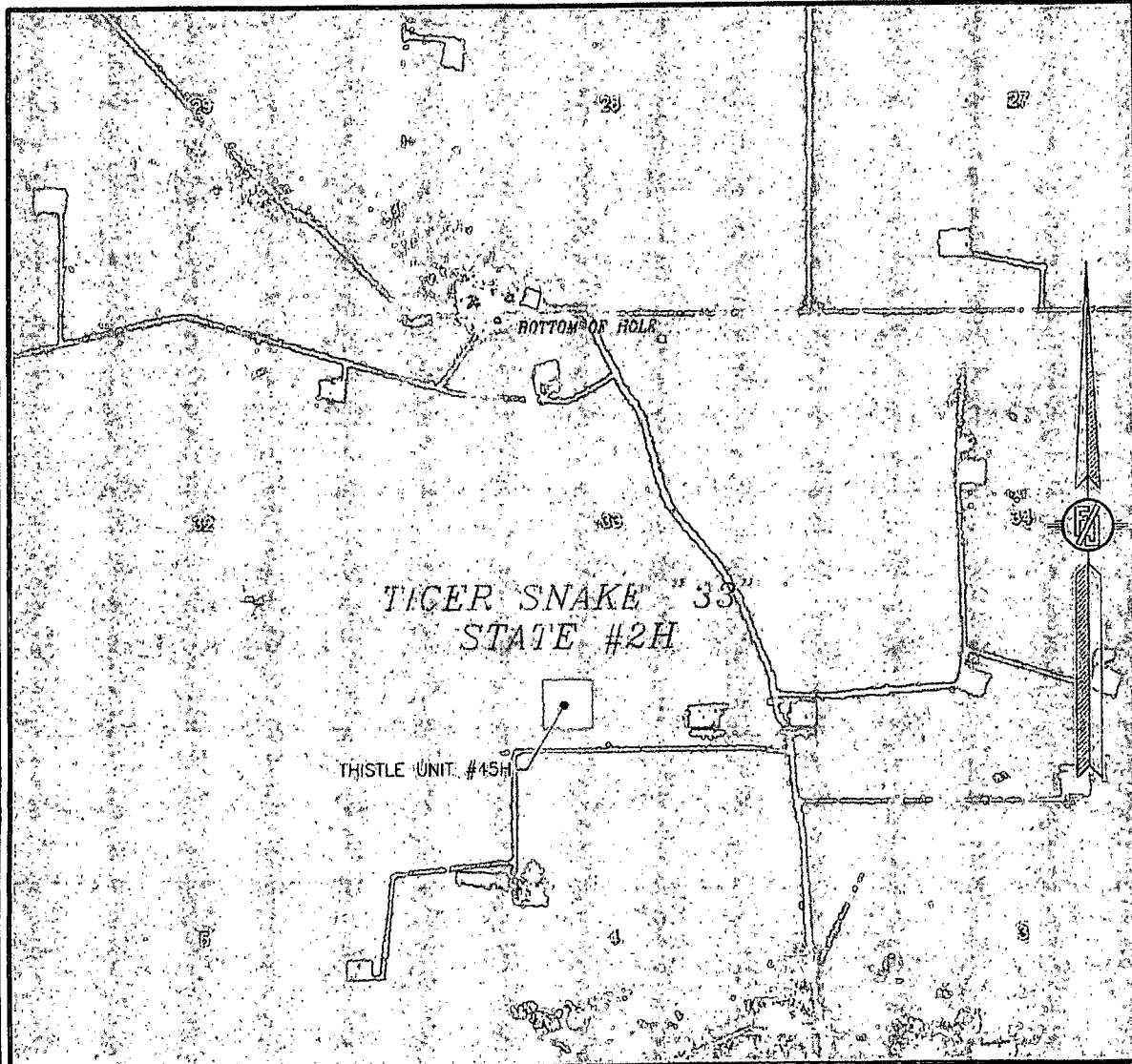
DEVON ENERGY PRODUCTION COMPANY, L.P.
TIGER SNAKE "33" STATE #2H
LOCATED 350 FT. FROM THE SOUTH LINE
AND 2030 FT. FROM THE WEST LINE OF
SECTION 33, TOWNSHIP 23 SOUTH,
RANGE 33 EAST, N.M.P.M.
LEA COUNTY, STATE OF NEW MEXICO

FEBRUARY 13, 2013

SURVEY NO. 1531A

MADRON SURVEYING, INC. 301 SOUTH CANAL CARLSBAD, NEW MEXICO
(575) 234-3341

SECTION 33, TOWNSHIP 23 SOUTH, RANGE 33 EAST, N.M.P.M.
LEA COUNTY, STATE OF NEW MEXICO
AERIAL PHOTO



NOT TO SCALE
AERIAL PHOTO:
GOOGLE EARTH
MARCH 2012

DEVON ENERGY PRODUCTION COMPANY, L.P.

TIGER SNAKE "33" STATE #2H
LOCATED 350 FT. FROM THE SOUTH LINE
AND 2030 FT. FROM THE WEST LINE OF
SECTION 33, TOWNSHIP 23 SOUTH,
RANGE 33 EAST, N.M.P.M.
LEA COUNTY, STATE OF NEW MEXICO

FEBRUARY 13, 2013

SURVEY NO. 1531A

MADRON SURVEYING, INC. 301 SOUTH CANAL CARLSBAD, NEW MEXICO
(575) 234-3341