

District I
1625 N. French Dr., Hobbs, NM 88240
Phone: (575) 393-6161 Fax: (575) 393-0720
District II
811 S. First St., Artesia, NM 88210
Phone: (575) 748-1283 Fax: (575) 748-9723
District III
1000 Rio Brazos Road, Aztec, NM 87410
Phone: (505) 334-6178 Fax: (505) 334-6170
District IV
1220 S. St. Francis Dr., Santa Fe, NM 87505
Phone: (505) 476-3460 Fax: (505) 476-3462

State of New Mexico
Energy, Minerals & Natural Resources Department
OIL CONSERVATION DIVISION
1220 South St. Francis Dr.
Santa Fe, NM 87505

Form C-102
Revised August 1, 2011
Submit one copy to appropriate
District Office
 AMENDED REPORT

HOBBS OCD
NOV 26 2013

RECEIVED LOCATION AND ACREAGE DEDICATION PLAT

| | | | |
|---|---|---------------------------------|---|
| ¹ API Number 30-025-41515 | | ² Pool Code 97964 | ³ Pool Name WC-025 G-07 S243225C; LOWER BONE SPRING |
| ⁴ Property Code 39747 | ⁵ Property Name BELL LAKE "19" STATE | | ⁶ Well Number 2H |
| ⁷ OGRID No. 6137 | ⁸ Operator Name DEVON ENERGY PRODUCTION COMPANY, L.P. | | ⁹ Elevation 3548.2 |

¹⁰ Surface Location

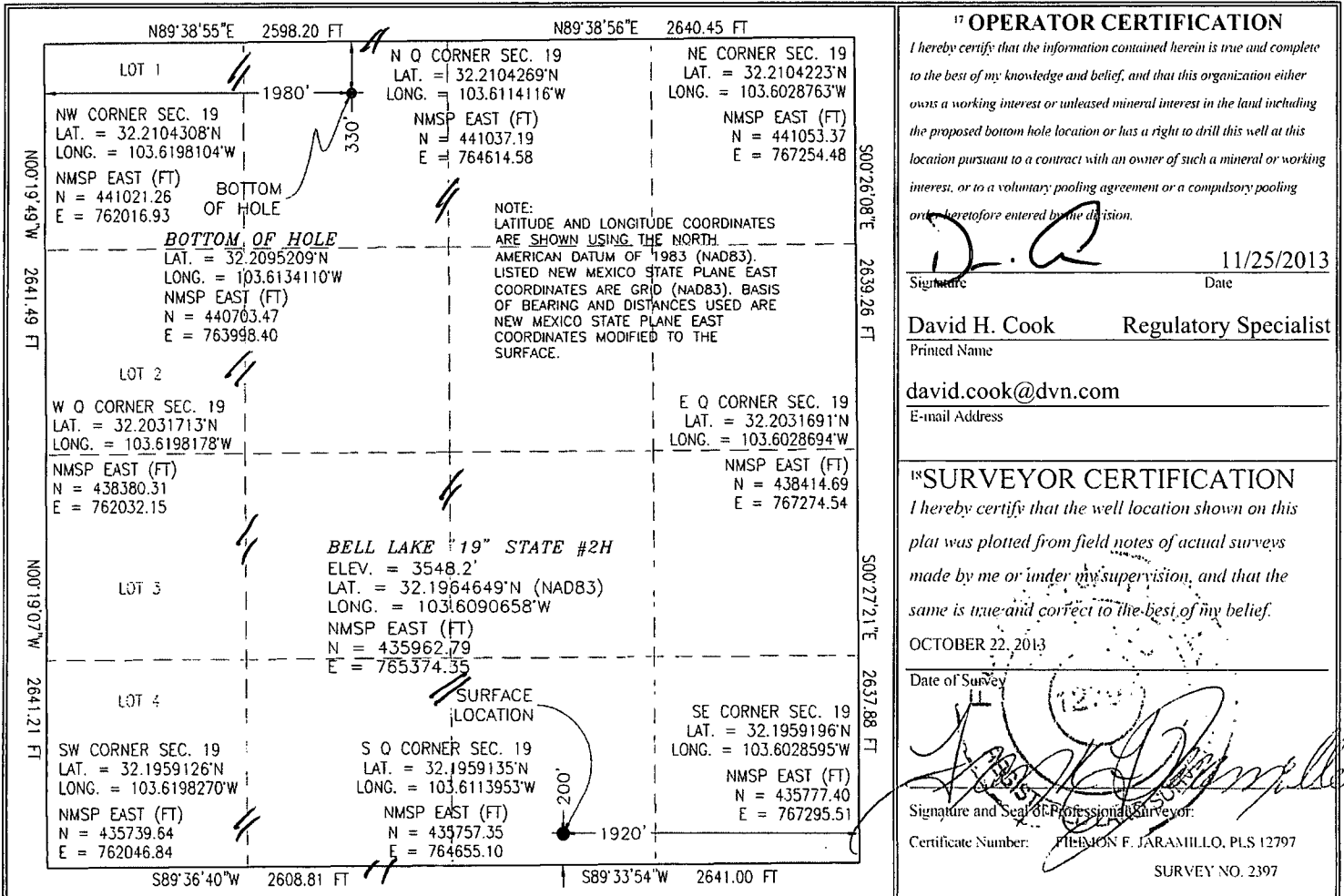
| UL or lot no. | Section | Township | Range | Lot Idn | Feet from the | North/South line | Feet from the | East/West line | County |
|---------------|---------|----------|-------|---------|---------------|------------------|---------------|----------------|--------|
| O | 19 | 24 S | 33 E | | 200 | SOUTH | 1920 | EAST | LEA |

¹¹ Bottom Hole Location If Different From Surface

| UL or lot no. | Section | Township | Range | Lot Idn | Feet from the | North/South line | Feet from the | East/West line | County |
|---------------|---------|----------|-------|---------|---------------|------------------|---------------|----------------|--------|
| C | 19 | 24 S | 33 E | | 330 | NORTH | 1980 | WEST | LEA |

| | | | |
|--------------------------------------|-------------------------------|----------------------------------|-------------------------|
| ¹² Dedicated Acres 160 | ¹³ Joint or Infill | ¹⁴ Consolidation Code | ¹⁵ Order No. |
|--------------------------------------|-------------------------------|----------------------------------|-------------------------|

No allowable will be assigned to this completion until all interests have been consolidated or a non-standard unit has been approved by the division.



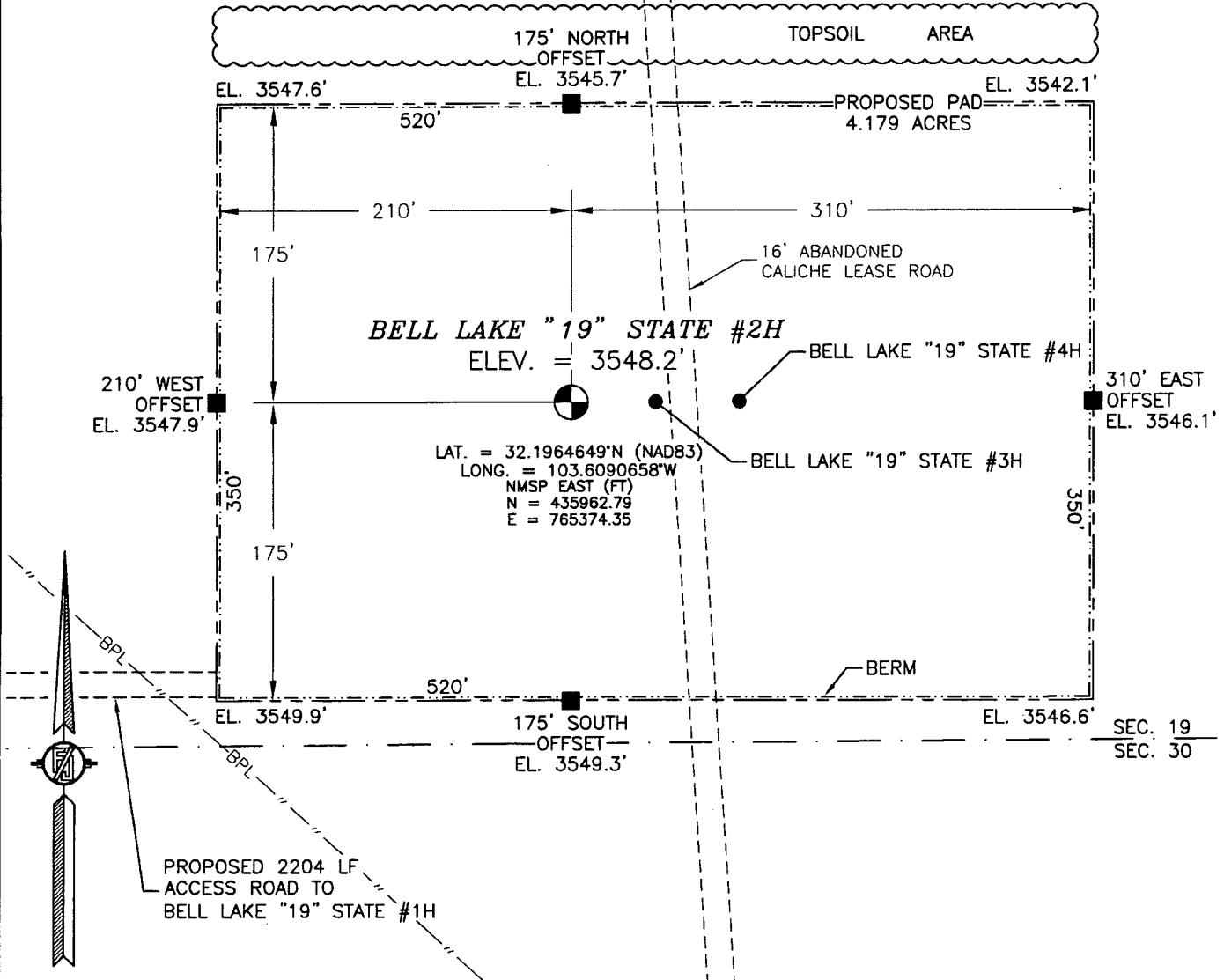
PP: 200 FSL & 2250 FEL

DEC 02 2013

SECTION 19, TOWNSHIP 24 SOUTH, RANGE 33 EAST, N.M.P.M.
LEA COUNTY, STATE OF NEW MEXICO

SITE MAP

NOTE: LATITUDE AND LONGITUDE COORDINATES ARE SHOWN USING THE NORTH AMERICAN DATUM OF 1983 (NAD83). LISTED NEW MEXICO STATE PLANE EAST COORDINATES ARE GRID (NAD83). BASIS OF BEARING AND DISTANCES USED ARE NEW MEXICO STATE PLANE EAST COORDINATES MODIFIED TO THE SURFACE



010 50 100 200

SCALE 1" = 100'

DIRECTIONS TO LOCATION

FROM MILE MARKER 25 ON STATE HIGHWAY 128 (JAL HIGHWAY) GO EAST 0.45 MILES TO CALICHE LEASE ROAD ON RIGHT, GO SOUTH 1.0 MILES TO CALICHE LEASE ROAD ON LEFT, GO EAST 0.15 MILES TO SOUTHEAST CORNER OF PAD OF BELL LAKE "19" STATE #1H. FROM HERE FOLLOW LATH EAST 2204', 0.42 MILES TO SOUTHWEST CORNER OF PAD.

DEVON ENERGY PRODUCTION COMPANY, L.P.

BELL LAKE "19" STATE #2H

LOCATED 200 FT. FROM THE SOUTH LINE

AND 1920 FT. FROM THE EAST LINE OF

SECTION 19, TOWNSHIP 24 SOUTH,

RANGE 33 EAST, N.M.P.M.

LEA COUNTY, STATE OF NEW MEXICO

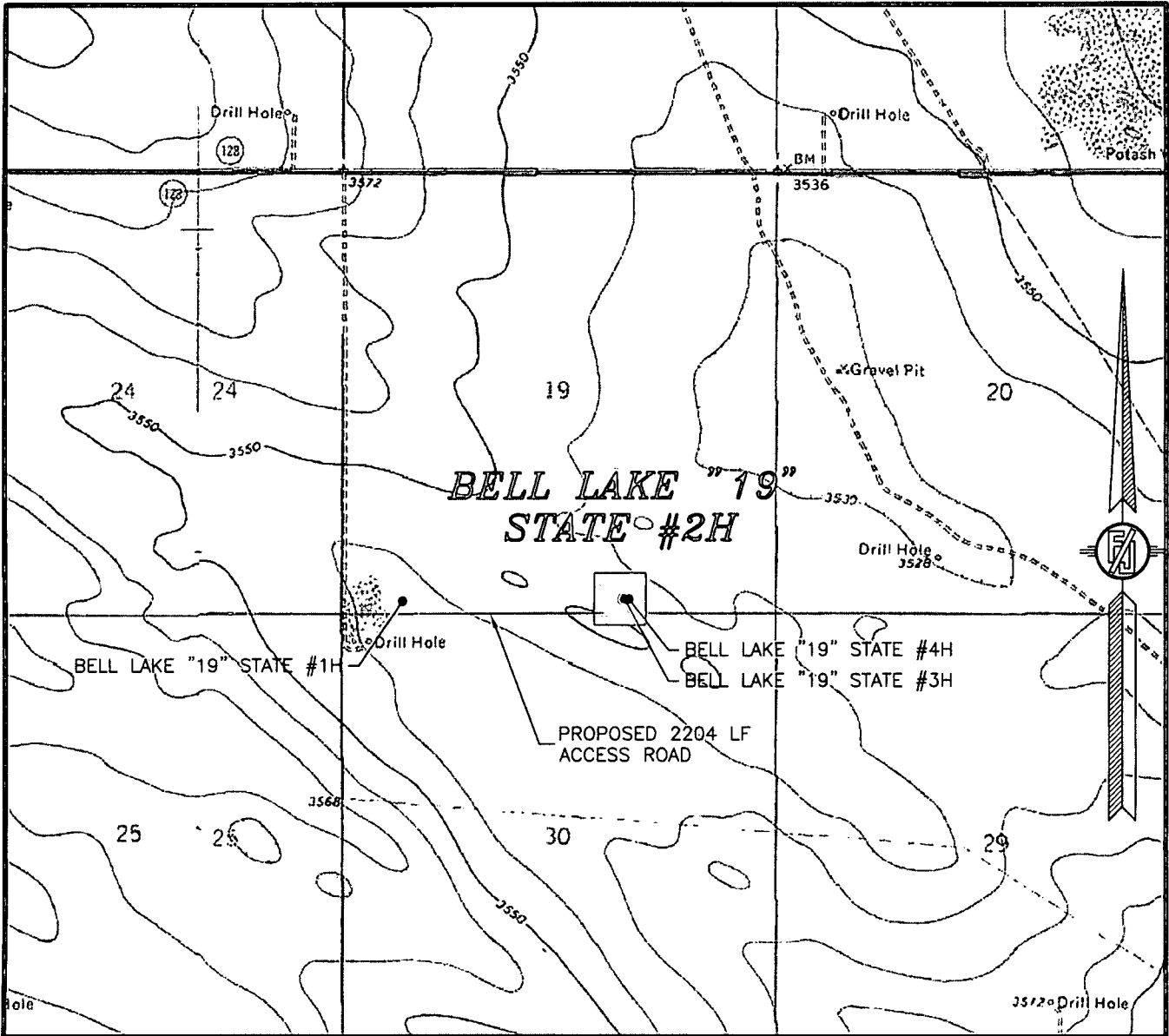
OCTOBER 22, 2013

SURVEY NO. 2397

MADRON SURVEYING, INC. 301 SOUTH CANAL (575) 234-3341

CARLSBAD, NEW MEXICO

SECTION 19, TOWNSHIP 24 SOUTH, RANGE 33 EAST, N.M.P.M.
 LEA COUNTY, STATE OF NEW MEXICO
 LOCATION VERIFICATION MAP



USGS QUAD MAP:
 BELL LAKE

NOT TO SCALE

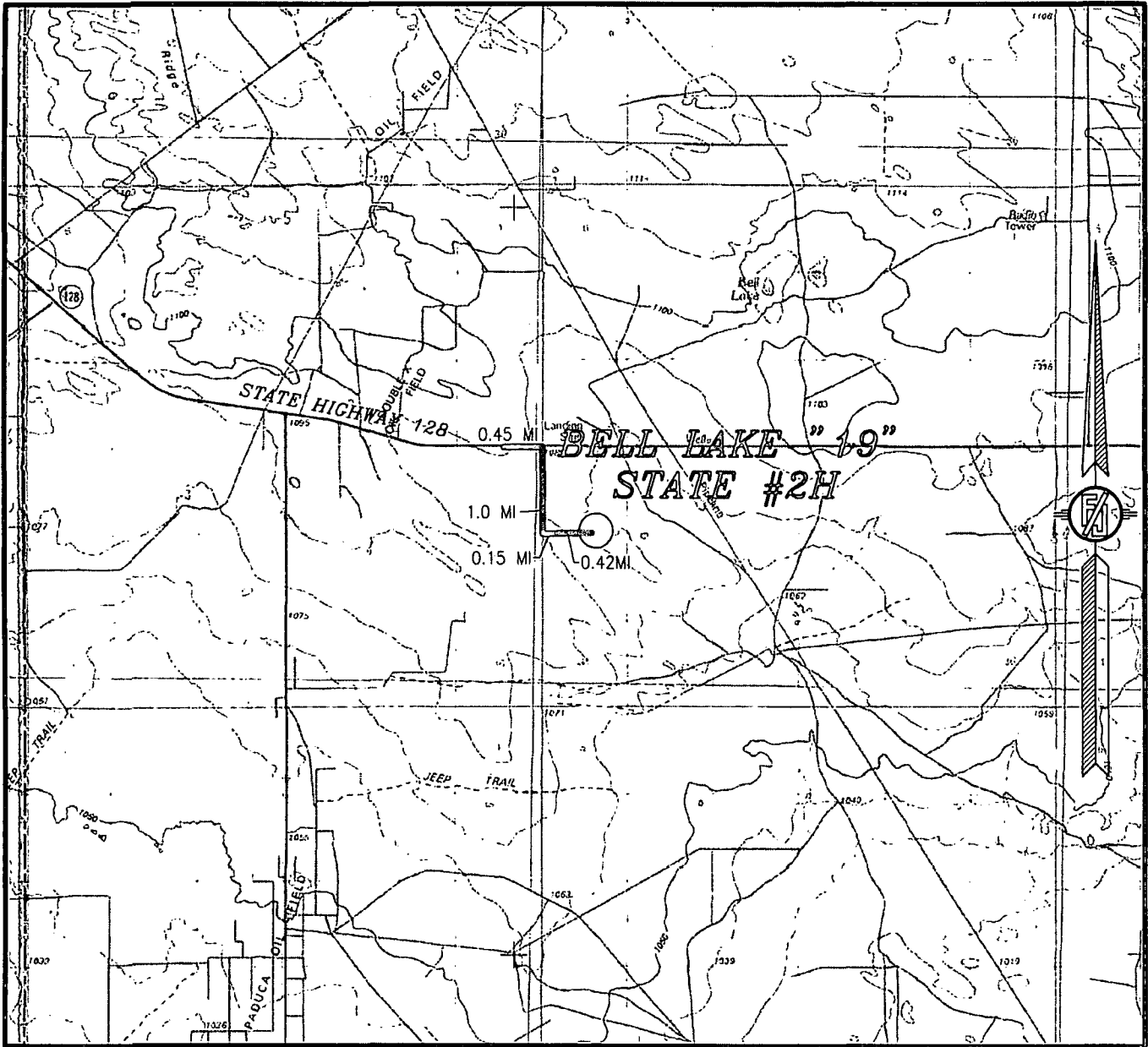
DEVON ENERGY PRODUCTION COMPANY, L.P.
BELL LAKE "19" STATE #2H
 LOCATED 200 FT. FROM THE SOUTH LINE
 AND 1920 FT. FROM THE EAST LINE OF
 SECTION 19, TOWNSHIP 24 SOUTH,
 RANGE 33 EAST, N.M.P.M.
 LEA COUNTY, STATE OF NEW MEXICO

OCTOBER 22, 2013

SURVEY NO. 2397

MADRON SURVEYING, INC. 301 SOUTH CANAL CARLSBAD, NEW MEXICO
 (575) 234-3341

SECTION 19, TOWNSHIP 24 SOUTH, RANGE 33 EAST, N.M.P.M.
 LEA COUNTY, STATE OF NEW MEXICO
 VICINITY MAP



NOT TO SCALE

DEVON ENERGY PRODUCTION COMPANY, L.P.

BELL LAKE "19" STATE #2H
 LOCATED 200 FT. FROM THE SOUTH LINE
 AND 1920 FT. FROM THE EAST LINE OF
 SECTION 19, TOWNSHIP 24 SOUTH,
 RANGE 33 EAST, N.M.P.M.
 LEA COUNTY, STATE OF NEW MEXICO

DIRECTIONS TO LOCATION

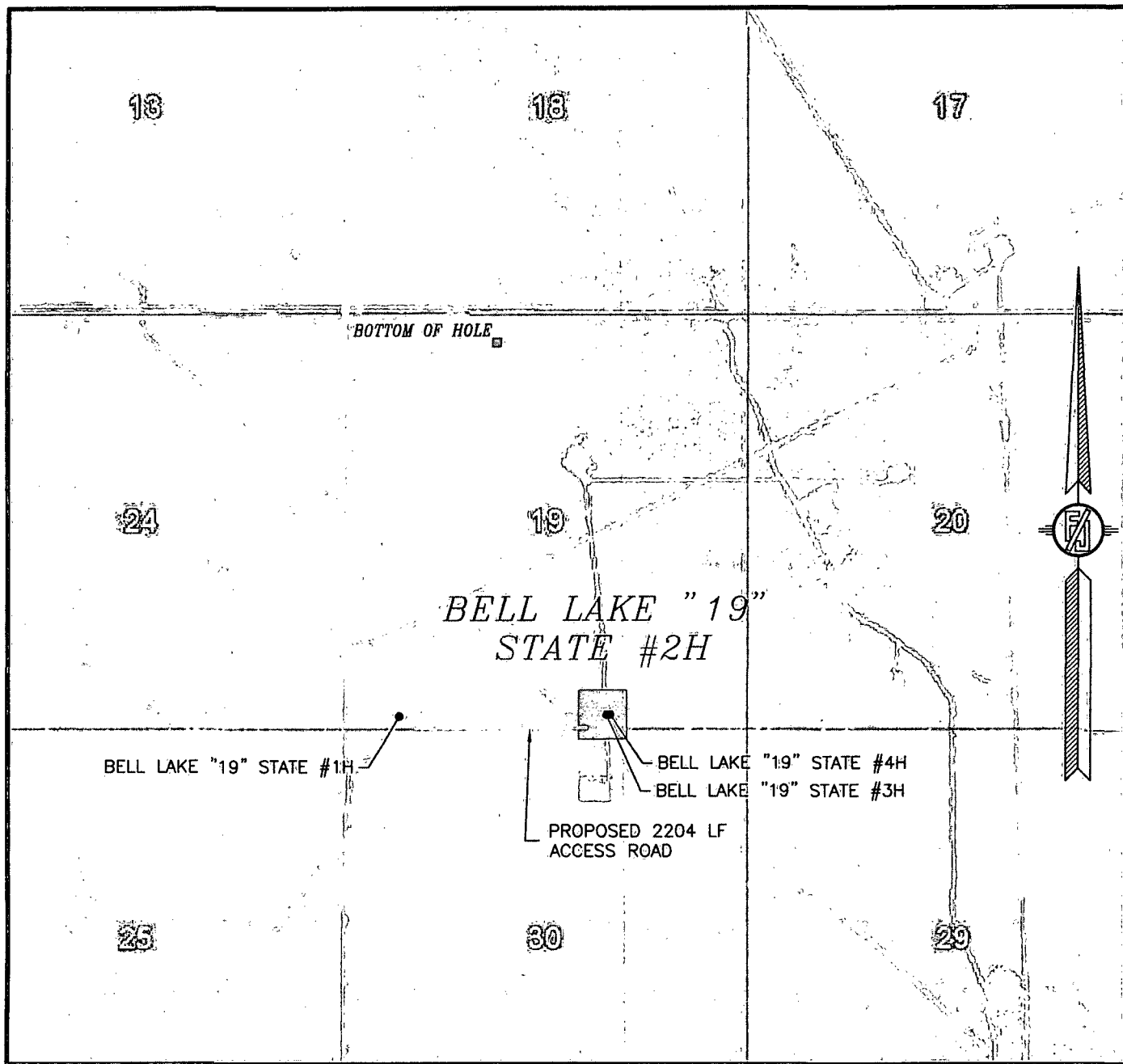
FROM MILE MARKER 25 ON STATE HIGHWAY 128 (JAL HIGHWAY) GO EAST 0.45 MILES TO CALICHE LEASE ROAD ON RIGHT, GO SOUTH 1.0 MILES TO CALICHE LEASE ROAD ON LEFT, GO EAST 0.15 MILES TO SOUTHEAST CORNER OF PAD OF BELL LAKE "19" STATE #1H. FROM HERE FOLLOW LATH EAST 2204', 0.42 MILES TO SOUTHWEST CORNER OF PAD.

OCTOBER 22, 2013

MADRON SURVEYING, INC. 301 SOUTH CANAL CARLSBAD, NEW MEXICO
 (575) 234-3341

SURVEY NO. 2397

SECTION 19, TOWNSHIP 24 SOUTH, RANGE 33 EAST, N.M.P.M.
 LEA COUNTY, STATE OF NEW MEXICO
 AERIAL PHOTO



NOT TO SCALE
 AERIAL PHOTO:
 GOOGLE EARTH
 MARCH 2012

DEVON ENERGY PRODUCTION COMPANY, L.P.

BELL LAKE "19" STATE #2H

LOCATED 200 FT. FROM THE SOUTH LINE
 AND 1920 FT. FROM THE EAST LINE OF
 SECTION 19, TOWNSHIP 24 SOUTH,
 RANGE 33 EAST, N.M.P.M.
 LEA COUNTY, STATE OF NEW MEXICO

OCTOBER 22, 2013

SURVEY NO. 2397

MADRON SURVEYING, INC. 301 SOUTH CANAL CARLSBAD, NEW MEXICO
(575) 234-3341