

Wellbore Diagram

Lease & Well No. **State A A/C 1 # 121 WIW**
Field Name **Jalmat**
Location **25' FSL 1460' FEL; Unit O, Sec. 03, T23S, R36E**

Status **TA'd**
County & State **Lea County, NM**
API No. **30-025-28516**
Pool Name **Jalmat: Tansill Yates Seven Rivers**

Well Information

Spud: **2/18/1984** Ground Elevation: **3,452'** D.F. Elevation: _____
Completed: **3/29/84** KB Elevation: **3,464'** Total Depth: **3,800'**

Pipe Data

Surface						
Hole size	Depth	Size (OD)	Weight	Grade	Sx. Cmt	Comments
12-1/4"	498'	8-5/8"	24.0#		275 sx	CTS
Production						
Hole size	Depth	Size (OD)	Weight	Grade	Sx. Cmt	Comments
7-7/8"	3,800'	5-1/2"	14.0#		900 sx	TOC @ 600' (temp survey)

Downhole Tubulars (Top to Bttm):

2-3/8" cement lined tubing, on/off tool, Otis perma-latch packer

Well History

3/20/1984 Perf 3701-11, 1 SPF, 11 holes. Acdz w/ 1000 gals 15%. Sqz perfs w/ 200 sx cement.
3/24/1984 Perf 3659-3687, 1 SPF, 29 holes. Acdz w/ 3000 gals 15%.
3/29/1984 Run injection string (pkr @ 3591') and turn to injection (rate of 1 BPM @ 0#)
2/17/1987 Repair pkr leak. Set pkr @ 3525'. Return to injection.
3/16/1992 Earliest record of Temporary Abandonment status. Says TA'd with Pkr @ 3528'
8/12/2013 Most recent passing pressure test. Extension of 6 months granted.

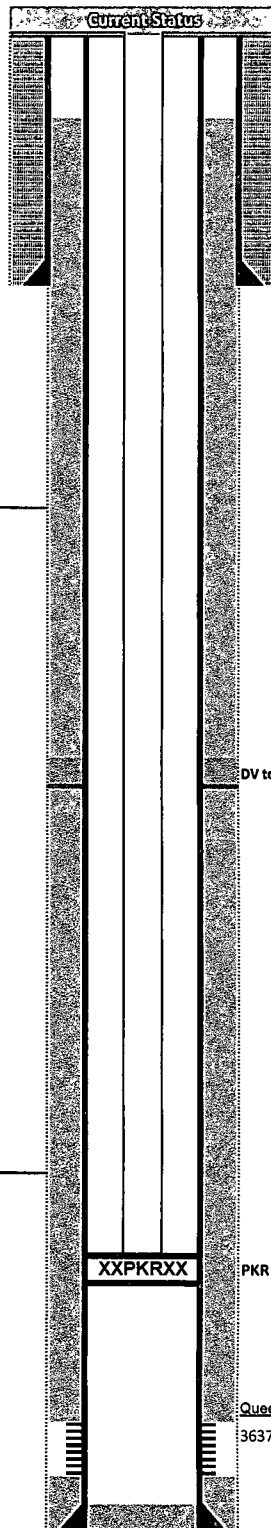
TA expiration expires 12/16/2013

POTENTIAL Injection well for Queen waterflood?

HOBBS OCD
FEB 03 2014
RECEIVED

Procedures

1
2
3
4
5
6
7
8
9
10



OCD Tops (MD)	
Tansill	2,833'
Yates	2,992'
7 Rivers	3,170'
Queen	3,536'
San Andres	
Glorieta	
Bone Spring	
Bone SS	
Abo	
Wolfcamp	
Strawn	
Atoka	

PBTD	3695
Total Depth	3,800

FEB 03 2014