

Submit To Appropriate District Office
Two Copies
District I
1625 N. French Dr., Hobbs, NM 88240
District II
811 S. First St., Artesia, NM 88210
District III
1000 Rio Brazos Rd., Aztec, NM 87410
District IV
1220 S. St. Francis Dr., Santa Fe, NM 87505

State of New Mexico
Energy, Minerals and Natural Resources
Oil Conservation Division
1220 South St. Francis Dr.
Santa Fe, NM 87505

Form C-105
Revised August 1, 2011

1. WELL API NO. ²⁵
30-015-41084 ⁴¹²¹⁰

2. Type of Lease
 STATE FEE FED/INDIAN

3. State Oil & Gas Lease No.

RECEIVED
APR 22 2014

WELL COMPLETION OR RECOMPLETION REPORT AND LOG

4. Reason for filing:
 COMPLETION REPORT (Fill in boxes #1 through #31 for State and Fee wells only)
 C-144 CLOSURE ATTACHMENT (Fill in boxes #1 through #9, #15 Date Rig Released and #32 and/or #33; attach this and the plat to the C-144 closure report in accordance with 19.15.17.13.K NMAC)

5. Lease Name or Unit Agreement Name
Quail II State

6. Well Number:
4H

7. Type of Completion:
 NEW WELL WORKOVER DEEPENING PLUGBACK DIFFERENT RESERVOIR OTHER

8. Name of Operator
Cimarex Energy Co.

9. OGRID
215099

10. Address of Operator
600 N. Marienfeld Street, Suite 600, Midland, TX 79701

11. Pool name or Wildcat
Scharb; Bone Spring

12. Location	Unit Ltr	Section	Township	Range	Lot	Feet from the	N/S Line	Feet from the	E/W Line	County
Surface:	N	11	19S	34E		330	South	1980	West	Lea
BH:	C	11	19S	34E		351	North	2052	West	Lea

13. Date Spudded: 9/28/13
14. Date T.D. Reached: 10/27/13
15. Date Rig Released: 10/29/13
16. Date Completed (Ready to Produce): 12/15/13
17. Elevations (DF and RKB, RT, GR, etc.): 3973' GR

18. Total Measured Depth of Well: 15162'
19. Plug Back Measured Depth: 15140'
20. Was Directional Survey Made? Yes
21. Type Electric and Other Logs Run: DSN & DLL

22. Producing Interval(s), of this completion - Top, Bottom, Name
10680-15125 Bone Spring

23. CASING RECORD (Report all strings set in well)

CASING SIZE	WEIGHT LB./FT.	DEPTH SET	HOLE SIZE	CEMENTING RECORD	AMOUNT PULLED
13 3/8"	54.5#	1935'	17 1/2"	1640 sx	170 bbls
9 5/8"	36#	3900'	12 1/4"	1255 sx	313 bbls
5 1/2"	17#	15153'	8 1/2"	2230 sx	0

24. LINER RECORD				25. TUBING RECORD			
SIZE	TOP	BOTTOM	SACKS CEMENT	SCREEN	SIZE	DEPTH SET	PACKER SET
					2 7/8"	10300	

26. Perforation record (interval, size, and number) 10680-15125, .42", 336 holes	27. ACID, SHOT, FRACTURE, CEMENT, SQUEEZE, ETC.	
	DEPTH INTERVAL	AMOUNT AND KIND MATERIAL USED
	10680-15125	1,566,923 gals total fluid & 2,351,747 # sand

28. PRODUCTION

Date First Production: 11/22/13
Production Method: *Flowing, gas lift, pumping - Size and type pump*
pumping
Well Status: *Prod. or Shut-in*
Producing

Date of Test: 12/27/13	Hours Tested: 24	Choke Size: 48/64	Prod'n For Test Period	Oil - Bbl: 595	Gas - MCF: 1844	Water - Bbl: 118	Gas - Oil Ratio: 3099.15
Flow Tubing Press.: 250	Casing Pressure: 200	Calculated 24-Hour Rate	Oil - Bbl: 595	Gas - MCF: 1844	Water - Bbl: 118	Oil Gravity - API - (Corr.): 42.43	

29. Disposition of Gas (*Sold, used for fuel, vented, etc.*)
Sold

30. Test Witnessed By

31. List Attachments
C-102, C-104, C-144, directional survey

32. If a temporary pit was used at the well, attach a plat with the location of the temporary pit.

33. If an on-site burial was used at the well, report the exact location of the on-site burial:
Latitude Longitude NAD 1927 1983

I hereby certify that the information shown on both sides of this form is true and complete to the best of my knowledge and belief

Signature: *Aricka Easterling*
Printed Name: Aricka Easterling Title: Regulatory Analyst Date: 04/17/2014
E-mail Address: aeasterling@cimarex.com

MAY 05 2014

INSTRUCTIONS

This form is to be filed with the appropriate District Office of the Division not later than 20 days after the completion of any newly-drilled or deepened well and not later than 60 days after completion of closure. When submitted as a completion report, this shall be accompanied by one copy of all electrical and radio-activity logs run on the well and a summary of all special tests conducted, including drill stem tests. All depths reported shall be measured depths. In the case of directionally drilled wells, true vertical depths shall also be reported. For multiple completions, items 11, 12 and 26-31 shall be reported for each zone.

INDICATE FORMATION TOPS IN CONFORMANCE WITH GEOGRAPHICAL SECTION OF STATE

Southeastern New Mexico		Northwestern New Mexico	
T. Anhy	CherryCanyon 5556	T. Ojo Alamo	T. Penn A"
T. Salt 2100	Brushy Canyon 6680	T. Kirtland	T. Penn. "B"
B. Salt 6300	Basal Brush Canyon	T. Fruitland	T. Penn. "C"
T. Yates 3510	T. Miss	T. Pictured Cliffs	T. Penn. "D"
T. 7 Rivers 4019	T. Devonian	T. Cliff House	T. Leadville
T. Queen	T. Silurian	T. Menefee	T. Madison
T. Grayburg	T. Montoya	T. Point Lookout	T. Elbert
T. San Andres	T. Simpson	T. Mancos	T. McCracken
T. Glorieta	T. McKee	T. Gallup	T. Ignacio Otzte
T. Paddock	T. Ellenburger	Base Greenhorn	T. Granite
T. Blinebry	T. Gr. Wash	T. Dakota	
T. Tubb	T. Delaware Sand 5840	T. Morrison	
T. Drinkard	T. Bone Springs 7954	T. Todilto	
T. Abo	T. Rustler 1852	T. Entrada	
T. Wolfcamp	1 st bone Spring 9576	T. Wingate	
T. Penn	2 nd Bone Spring 10087	T. Chinle	
T. Cisco (Bough C)	3 rd Bone Spring 10637	T. Permian	

OIL OR GAS SANDS OR ZONES

No. 1, from.....to..... No. 3, from.....to.....
 No. 2, from.....to..... No. 4, from.....to.....

IMPORTANT WATER SANDS

Include data on rate of water inflow and elevation to which water rose in hole:

No. 1, from.....to..... feet.....
 No. 2, from.....to..... feet.....
 No. 3, from.....to..... feet.....

LITHOLOGY RECORD (Attach additional sheet if necessary)

From	To	Thickness In Feet	Lithology	From	To	Thickness In Feet	Lithology



Cimarex

Rev3



NorAm 26

WELL Quail 11 State #4H		FIELD NM Lea County		STRUCTURE NorAm 26	
Magnetic Parameters Model: IBCGN 2013 Dip: 60.519° Mag Dec: 7.463°		Surface Location Lat: N 32 40 6.552 Long: W 103 31 59.243		Magnetic Location State: Cimarex Quail 11 State #4H TVD Ref: 63.8(3990) above SHL Plan: STD1 Rev3 WEB: 13-Oct-2013 Date: June 06, 2013	

Legend

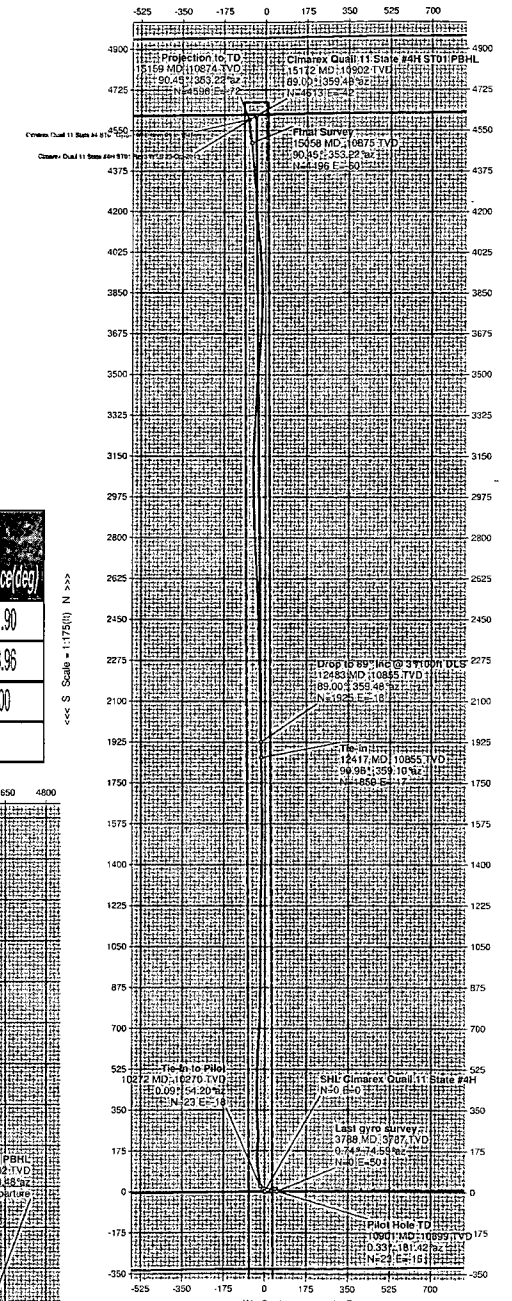
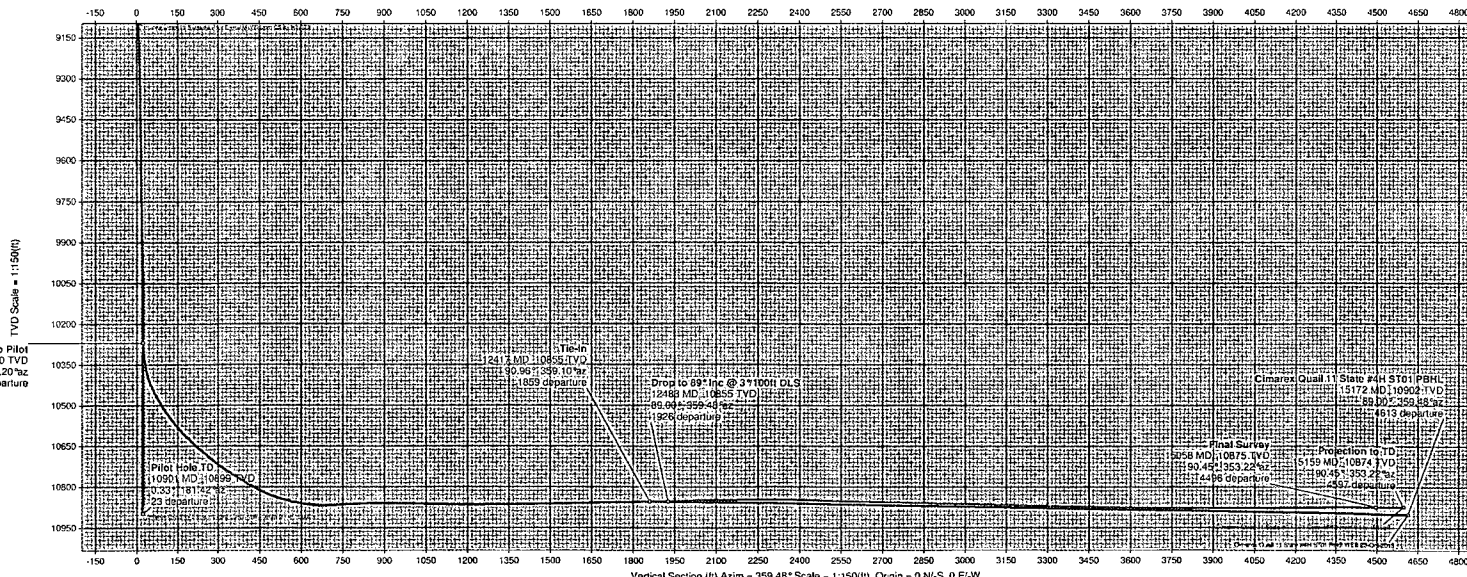
- SHL Cimarex Quail 11 State #4H
- Tie-in to Pilot
- Drop to 89° Inc @ 3°/100ft DLS
- Cimarex Quail 11 State #4H ST01 PBHL
- Final Survey
- Projection to TD
- Pilot Hole TD
- Last gyro survey



Grid North
Tot Corr (M->G 7.0309°)
Mag Dec (7.463°)
Grid Conv (0.432°)

Critical Points

Comments	Survey (MD)(ft)	Inclination(deg)	Azimuth(deg)	TVD(ft)	Sub-Sea TVD	VS(ft)	NS(ft)	EW(ft)	Latitude(deg)	Longitude(deg)	Easting(ftUS)	Northing(ftUS)	Closure(ft)	Closure Azimuth(deg)	DLS(°/100ft)	Tool Face(deg)
SHL Cimarex Quail 11 State #4H	0.00	0.00	0.00	0.00	-3999.00	0.00	0.00	0.00	N 32 40 6.552	W 103 31 59.243	787579.90	607854.70	0.00	0.00		201.90
Tie-in	12417.00	90.96	359.10	10855.18	6856.18	1859.06	1858.98	-16.77	N 32 40 24.945	W 103 31 59.275	787563.13	608713.64	1859.06	359.48	0.49	168.96
Drop to 89° Inc @ 3°/100ft DLS	12483.48	89.00	359.48	10855.21	6856.21	1925.53	1925.45	-17.60	N 32 40 25.604	W 103 31 59.279	787562.30	609780.11	1925.53	359.48	3.00	0.00
Cimarex Quail 11 State #4H ST01 PBHL	15171.65	89.00	359.48	10902.00	6903.00	4613.30	4613.11	-41.90	N 32 40 52.198	W 103 31 59.326	787538.00	612467.70	4613.30	359.48	0.00	



Drawn By: J.W. Blackman
Date Created: October 23, 2013 10:24:43 AM
Checked By:
Created Date:
Approved By:
Approved Date:

CIMAREX ENERGY CO. Quail 11 State #4H Gyro+MWD

Report Date: 4/17/2014	Survey / DLS Computation Method: Minimum Curvature / Lubinski
Client: CIMAREX ENERGY CO.	Vertical Section Azimuth: 359.7° (GridNorth)
Field: NM Lea County (NAD 83)	Vertical Section Origin: 0 ft, 0 ft
Structure / Slot: CIMAREX ENERGY CO. Quail 11 State #4H / CIMAREX ENERGY CO. Quail 11 State #4H	TVD Reference Datum: DF
Well: Quail 11 State #4H	TVD Reference Elevation: 3999 ft above MSL
Borehole: Original Borehole	Sea Bed / Ground Level Elevation: 3974 ft above MSL
UWI/API#: Unknown / 30-025-41210-0000	Magnetic Declination: 7.28012 °
Survey Name / Date: CIMAREX ENERGY CO. Quail 11 State #4H Gyro+MWD 26-Oct-2013	Total Field Strength: 48042.66 nT
Grid Coordinate System: NAD83 New Mexico State Pla	Magnetic Dip: 59.45113 °
Location Lat/Long: 32° 40' 6.55" N, 103° 31' 59.24" W	Declination Date: 11/9/2012
Location Grid N/E Y/X: Y: 787579.9X: 607854.7	Magnetic Declination Model: BGGM 2012
Grid Convergence Angle: 0.43196 °	North Reference: GridNorth
Grid Scale Factor: 0.99994154	Total Corr Mag North -> Grid North: 8.75482 °
	Local Coordinates Referenced To: Structure Reference Point

MD	INCL	AZIM	TVD	VSEC	ND	ED	DLS	RUNNO	TOOLTYPE	CLOSURE	ATAZIM	DATE
0.00	0.00	0.00	0.00	0.00	0.00	0.00	0.00	-999.25	TIP	0.00	90	18-Oct-13
100.00	0.36	201.90	100.00	-0.29	-0.29	-0.12	0.36	Run1	GyroTool	0.31	201.9	19-Oct-13
200.00	0.54	240.89	200.00	-0.81	-0.81	-0.65	0.34	Run1	GyroTool	1.04	218.5	19-Oct-13
300.00	0.41	205.35	299.99	-1.36	-1.36	-1.21	0.32	Run1	GyroTool	1.82	221.58	19-Oct-13
400.00	0.37	201.41	399.99	-1.98	-1.99	-1.48	0.05	Run1	GyroTool	2.48	216.69	19-Oct-13
500.00	0.25	196.25	499.99	-2.49	-2.50	-1.66	0.12	Run1	GyroTool	3.00	213.61	19-Oct-13
600.00	0.27	14.02	599.99	-2.47	-2.48	-1.66	0.52	Run1	GyroTool	2.99	213.88	19-Oct-13
700.90	0.13	47.94	700.89	-2.16	-2.17	-1.52	0.18	Run1	GyroTool	2.65	215.02	19-Oct-13
790.90	0.06	31.04	790.89	-2.06	-2.06	-1.42	0.08	Run1	GyroTool	2.51	214.58	19-Oct-13
882.70	0.16	60.92	882.69	-1.95	-1.96	-1.29	0.12	Run1	GyroTool	2.34	213.26	19-Oct-13
970.90	0.18	71.87	970.89	-1.85	-1.86	-1.05	0.04	Run1	GyroTool	2.13	209.39	19-Oct-13
1062.80	0.25	75.48	1062.79	-1.76	-1.76	-0.71	0.08	Run1	GyroTool	1.90	202.08	19-Oct-13
1151.70	0.32	101.42	1151.69	-1.76	-1.76	-0.28	0.16	Run1	GyroTool	1.79	189.15	19-Oct-13
1243.00	0.31	123.08	1242.98	-1.95	-1.95	0.17	0.13	Run1	GyroTool	1.96	174.92	19-Oct-13

1332.80	0.32	128.14	1332.78	-2.24	-2.24	0.57	0.03	Run1	GyroTool	2.31	165.6	19-Oct-13
1427.20	0.28	105.76	1427.18	-2.47	-2.46	1.00	0.13	Run1	GyroTool	2.66	157.82	19-Oct-13
1521.70	0.39	99.71	1521.68	-2.59	-2.58	1.54	0.12	Run1	GyroTool	3.00	149.1	19-Oct-13
1616.10	0.50	103.06	1616.08	-2.74	-2.72	2.26	0.12	Run1	GyroTool	3.54	140.32	19-Oct-13
1710.50	0.53	104.58	1710.47	-2.94	-2.93	3.08	0.03	Run1	GyroTool	4.25	133.51	19-Oct-13
1804.90	0.62	98.48	1804.87	-3.13	-3.11	4.01	0.12	Run1	GyroTool	5.08	127.81	19-Oct-13
1899.30	0.80	99.69	1899.26	-3.33	-3.30	5.17	0.19	Run1	GyroTool	6.13	122.56	19-Oct-13
1993.80	0.88	98.85	1993.75	-3.56	-3.52	6.53	0.09	Run1	GyroTool	7.42	118.33	19-Oct-13
2088.20	0.98	97.44	2088.14	-3.78	-3.74	8.05	0.11	Run1	GyroTool	8.88	114.91	19-Oct-13
2182.60	1.04	97.01	2182.52	-4.00	-3.95	9.70	0.06	Run1	GyroTool	10.47	112.14	19-Oct-13
2277.00	1.18	97.11	2276.91	-4.23	-4.17	11.52	0.15	Run1	GyroTool	12.25	109.91	19-Oct-13
2371.40	1.31	97.20	2371.28	-4.50	-4.43	13.55	0.14	Run1	GyroTool	14.26	108.09	19-Oct-13
2465.90	1.28	97.26	2465.76	-4.78	-4.70	15.67	0.03	Run1	GyroTool	16.36	106.68	19-Oct-13
2560.30	1.36	97.04	2560.14	-5.06	-4.97	17.83	0.08	Run1	GyroTool	18.51	105.57	19-Oct-13
2654.70	1.50	92.95	2654.51	-5.27	-5.17	20.17	0.18	Run1	GyroTool	20.83	104.37	19-Oct-13
2749.10	1.65	91.18	2748.87	-5.38	-5.26	22.77	0.17	Run1	GyroTool	23.37	103.01	19-Oct-13
2843.50	1.79	84.70	2843.23	-5.29	-5.15	25.59	0.25	Run1	GyroTool	26.11	101.38	19-Oct-13
2938.00	2.14	80.56	2937.67	-4.88	-4.73	28.80	0.40	Run1	GyroTool	29.19	99.32	19-Oct-13
3032.40	2.35	80.40	3032.00	-4.28	-4.11	32.45	0.22	Run1	GyroTool	32.71	97.22	19-Oct-13
3126.80	2.32	80.11	3126.32	-3.65	-3.46	36.24	0.03	Run1	GyroTool	36.41	95.46	19-Oct-13
3221.20	2.06	77.80	3220.65	-2.98	-2.78	39.78	0.29	Run1	GyroTool	39.88	93.99	19-Oct-13
3315.60	1.63	72.88	3315.00	-2.25	-2.02	42.72	0.49	Run1	GyroTool	42.77	92.71	19-Oct-13
3410.10	1.41	73.96	3409.47	-1.54	-1.31	45.12	0.23	Run1	GyroTool	45.14	91.66	19-Oct-13
3504.50	0.79	75.27	3503.85	-1.06	-0.82	46.87	0.66	Run1	GyroTool	46.88	91	19-Oct-13
3598.90	0.72	78.70	3598.24	-0.79	-0.54	48.08	0.09	Run1	GyroTool	48.08	90.64	19-Oct-13
3693.30	0.76	78.32	3692.64	-0.55	-0.29	49.28	0.04	Run1	GyroTool	49.28	90.34	19-Oct-13
3787.70	0.74	74.59	3787.03	-0.27	-0.01	50.48	0.06	Run1	GyroTool	50.48	90.01	19-Oct-13
3942.00	1.01	53.02	3941.31	0.80	1.08	52.52	0.27	Run1	GyroTool	52.53	88.82	19-Oct-13
4037.00	1.10	53.63	4036.29	1.84	2.12	53.93	0.10	Run1	GyroTool	53.97	87.75	19-Oct-13
4130.00	1.19	47.92	4129.28	3.01	3.30	55.36	0.16	Run1	GyroTool	55.46	86.59	19-Oct-13
4225.00	0.88	47.13	4224.26	4.16	4.46	56.63	0.33	Run1	GyroTool	56.80	85.5	19-Oct-13
4318.00	1.01	52.09	4317.25	5.14	5.45	57.80	0.17	Run1	GyroTool	58.06	84.62	19-Oct-13
4415.00	1.10	55.70	4414.23	6.18	6.50	59.24	0.12	Run1	GyroTool	59.60	83.74	19-Oct-13

4509.00	0.09	37.59	4508.22	6.75	7.06	60.03	1.08	Run1	GyroTool	60.45	83.29	19-Oct-13
4604.00	0.40	286.89	4603.22	6.90	7.22	59.76	0.46	Run1	GyroTool	60.20	83.11	19-Oct-13
4697.00	0.31	256.79	4696.22	6.94	7.25	59.21	0.22	Run1	GyroTool	59.65	83.01	19-Oct-13
4791.00	0.40	282.32	4790.22	6.96	7.27	58.64	0.19	Run1	GyroTool	59.09	82.94	19-Oct-13
4885.00	0.40	271.82	4884.22	7.04	7.35	57.99	0.08	Run1	GyroTool	58.45	82.78	19-Oct-13
4978.00	0.48	305.00	4977.22	7.28	7.58	57.35	0.28	Run1	GyroTool	57.84	82.47	19-Oct-13
5168.00	0.48	312.12	5167.21	8.28	8.57	56.10	0.03	Run1	GyroTool	56.75	81.31	19-Oct-13
5262.00	0.62	320.51	5261.20	8.94	9.23	55.49	0.17	Run1	GyroTool	56.25	80.56	19-Oct-13
5356.00	0.48	321.39	5355.20	9.64	9.93	54.92	0.15	Run1	GyroTool	55.81	79.75	19-Oct-13
5450.00	0.62	306.80	5449.20	10.26	10.54	54.27	0.21	Run1	GyroTool	55.28	79.01	19-Oct-13
5545.00	0.48	317.39	5544.19	10.86	11.14	53.59	0.18	Run1	GyroTool	54.73	78.26	19-Oct-13
5639.00	0.62	320.73	5638.19	11.55	11.82	53.00	0.15	Run1	GyroTool	54.30	77.42	19-Oct-13
5737.00	0.62	318.71	5736.18	12.36	12.63	52.31	0.02	Run1	GyroTool	53.81	76.42	19-Oct-13
5831.00	0.79	316.20	5830.17	13.21	13.48	51.53	0.18	Run1	GyroTool	53.26	75.34	19-Oct-13
5925.00	0.70	321.39	5924.17	14.13	14.40	50.72	0.12	Run1	GyroTool	52.72	74.15	19-Oct-13
6020.00	0.79	323.72	6019.16	15.12	15.38	49.97	0.10	Run1	GyroTool	52.28	72.89	19-Oct-13
6114.00	0.88	325.39	6113.15	16.24	16.50	49.18	0.10	Run1	GyroTool	51.87	71.46	19-Oct-13
6207.00	1.10	290.01	6206.13	17.14	17.39	47.93	0.69	Run1	GyroTool	50.99	70.06	19-Oct-13
6302.00	1.58	265.71	6301.11	17.36	17.60	45.77	0.77	Run1	GyroTool	49.04	68.96	19-Oct-13
6396.00	1.58	263.60	6395.07	17.14	17.36	43.19	0.06	Run1	GyroTool	46.55	68.1	19-Oct-13
6490.00	1.49	235.61	6489.04	16.31	16.53	40.89	0.80	Run1	GyroTool	44.11	67.99	19-Oct-13
6585.00	1.49	237.02	6584.01	14.95	15.16	38.84	0.04	Run1	GyroTool	41.69	68.68	19-Oct-13
6677.00	1.49	237.10	6675.98	13.66	13.86	36.83	0.00	Run1	GyroTool	39.35	69.38	19-Oct-13
6773.00	1.32	233.10	6771.95	12.33	12.52	34.90	0.20	Run1	GyroTool	37.07	70.27	19-Oct-13
6866.00	1.49	228.93	6864.92	10.90	11.08	33.13	0.21	Run1	GyroTool	34.93	71.51	19-Oct-13
6961.00	1.71	230.29	6959.88	9.20	9.36	31.11	0.23	Run1	GyroTool	32.49	73.25	19-Oct-13
7056.00	1.71	231.70	7054.84	7.43	7.58	28.91	0.04	Run1	GyroTool	29.88	75.31	19-Oct-13
7150.00	1.80	224.49	7148.80	5.51	5.65	26.77	0.25	Run1	GyroTool	27.36	78.07	19-Oct-13
7244.00	1.89	231.13	7242.75	3.50	3.63	24.53	0.25	Run1	GyroTool	24.80	81.59	19-Oct-13
7339.00	1.10	243.69	7337.72	2.12	2.24	22.49	0.90	Run1	GyroTool	22.60	84.31	19-Oct-13
7437.00	1.19	239.30	7435.70	1.20	1.30	20.77	0.13	Run1	GyroTool	20.81	86.41	19-Oct-13
7531.00	1.10	232.23	7529.68	0.15	0.25	19.22	0.18	Run1	GyroTool	19.22	89.24	19-Oct-13
7625.00	1.10	235.39	7623.66	-0.90	-0.81	17.77	0.06	Run1	GyroTool	17.78	92.61	19-Oct-13

7719.00	1.10	235.39	7717.64	-1.92	-1.84	16.28	0.00	Run1	GyroTool	16.38	96.44	19-Oct-13
7813.00	1.01	239.92	7811.63	-2.84	-2.76	14.82	0.13	Run1	GyroTool	15.08	100.56	19-Oct-13
7908.00	1.01	238.29	7906.61	-3.69	-3.62	13.38	0.03	Run1	GyroTool	13.87	105.15	19-Oct-13
8002.00	0.88	251.43	8000.60	-4.35	-4.29	11.99	0.27	Run1	GyroTool	12.74	109.68	19-Oct-13
8096.00	1.01	249.01	8094.59	-4.87	-4.82	10.54	0.14	Run1	GyroTool	11.59	114.56	19-Oct-13
8191.00	0.88	253.49	8189.57	-5.37	-5.32	9.06	0.16	Run1	GyroTool	10.50	120.45	19-Oct-13
8285.00	1.01	270.41	8283.56	-5.56	-5.52	7.54	0.33	Run1	GyroTool	9.34	126.24	19-Oct-13
8380.00	1.01	275.12	8378.55	-5.47	-5.44	5.86	0.09	Run1	GyroTool	8.00	132.86	19-Oct-13
8473.00	1.01	295.20	8471.53	-5.04	-5.02	4.31	0.38	Run1	GyroTool	6.61	139.37	19-Oct-13
8568.00	1.32	300.30	8566.51	-4.12	-4.11	2.60	0.34	Run1	GyroTool	4.87	147.65	19-Oct-13
8663.00	1.41	318.71	8661.49	-2.68	-2.68	0.89	0.47	Run1	GyroTool	2.82	161.68	19-Oct-13
8757.00	1.58	325.92	8755.45	-0.73	-0.74	-0.60	0.27	Run1	GyroTool	0.95	219.19	19-Oct-13
8850.00	1.58	325.83	8848.42	1.40	1.38	-2.04	0.00	Run1	GyroTool	2.47	304.16	19-Oct-13
8944.00	1.49	317.83	8942.39	3.38	3.36	-3.59	0.25	Run1	GyroTool	4.92	313.14	19-Oct-13
9039.00	1.49	326.62	9037.35	5.34	5.31	-5.10	0.24	Run1	GyroTool	7.36	316.17	19-Oct-13
9137.00	1.41	325.83	9135.32	7.40	7.37	-6.48	0.08	Run1	GyroTool	9.81	318.7	19-Oct-13
9172.00	1.49	324.03	9170.31	8.13	8.10	-6.98	0.26	Run1	GyroTool	10.69	319.21	19-Oct-13
9324.00	1.41	324.03	9322.26	11.26	11.21	-9.24	0.05	Run1	GyroTool	14.53	320.49	19-Oct-13
9419.00	1.32	325.83	9417.24	13.11	13.06	-10.54	0.10	Run1	GyroTool	16.79	321.08	19-Oct-13
9518.00	1.01	323.90	9516.21	14.77	14.71	-11.70	0.32	Run1	GyroTool	18.79	321.5	19-Oct-13
9612.00	1.10	326.53	9610.20	16.20	16.13	-12.69	0.11	Run1	GyroTool	20.52	321.82	19-Oct-13
9707.00	1.10	311.59	9705.18	17.57	17.50	-13.87	0.30	Run1	GyroTool	22.33	321.59	19-Oct-13
9801.00	1.32	319.59	9799.16	19.00	18.92	-15.25	0.29	Run1	GyroTool	24.30	321.14	19-Oct-13
9894.00	1.32	324.19	9892.14	20.69	20.60	-16.57	0.11	Run1	GyroTool	26.44	321.2	19-Oct-13
9988.00	1.41	324.60	9986.11	22.52	22.42	-17.87	0.10	Run1	GyroTool	28.67	321.45	19-Oct-13
10083.00	0.09	183.90	10081.10	23.40	23.30	-18.55	1.56	Run1	GyroTool	29.79	321.47	19-Oct-13
10177.00	0.00	350.70	10175.10	23.33	23.23	-18.56	0.10	Run1	GyroTool	29.73	321.38	19-Oct-13
10272.00	0.09	54.20	10270.10	23.37	23.27	-18.50	0.09	Run1	GyroTool	29.73	321.52	19-Oct-13
10369.00	11.14	351.96	10366.49	32.73	32.63	-19.75	11.44	Run1	SlimPulse	38.14	328.81	19-Oct-13
10401.00	17.08	349.01	10397.51	40.42	40.31	-21.08	18.68	Run1	SlimPulse	45.49	332.39	20-Oct-13
10432.00	22.80	350.71	10426.64	50.84	50.72	-22.92	18.55	Run1	SlimPulse	55.65	335.68	20-Oct-13
10464.00	27.44	353.09	10455.60	64.29	64.16	-24.81	14.82	Run1	SlimPulse	68.79	338.86	20-Oct-13
10496.00	29.65	354.37	10483.71	79.50	79.36	-26.47	7.18	Run1	SlimPulse	83.66	341.55	20-Oct-13

N E

10527.00	32.47	355.37	10510.27	95.43	95.29	-27.90	9.26	Run1	SlimPulse	99.29	343.68	20-Oct-13
10559.00	35.79	356.07	10536.75	113.34	113.19	-29.23	10.43	Run1	SlimPulse	116.91	345.52	20-Oct-13
10590.00	38.53	357.56	10561.45	132.04	131.89	-30.26	9.31	Run1	SlimPulse	135.31	347.08	20-Oct-13
10622.00	40.72	359.74	10586.10	152.44	152.29	-30.73	8.10	Run1	SlimPulse	155.36	348.59	20-Oct-13
10653.00	43.94	2.79	10609.02	173.30	173.15	-30.26	12.32	Run1	SlimPulse	175.77	350.09	20-Oct-13
10685.00	46.29	4.02	10631.60	195.93	195.78	-28.91	7.83	Run1	SlimPulse	197.90	351.6	20-Oct-13
10716.00	48.47	2.50	10652.59	218.69	218.55	-27.61	7.92	Run1	SlimPulse	220.29	352.8	20-Oct-13
10748.00	49.66	358.73	10673.56	242.86	242.72	-27.36	9.63	Run1	SlimPulse	244.25	353.57	20-Oct-13
10779.00	50.13	357.41	10693.53	266.56	266.41	-28.16	3.61	Run1	SlimPulse	267.90	353.97	20-Oct-13
10811.00	52.30	356.69	10713.57	291.47	291.32	-29.44	6.98	Run1	SlimPulse	292.81	354.23	20-Oct-13
10842.00	55.28	357.26	10731.88	316.45	316.30	-30.76	9.73	Run1	SlimPulse	317.79	354.45	20-Oct-13
10873.00	56.26	357.98	10749.32	342.07	341.90	-31.83	3.72	Run1	SlimPulse	343.38	354.68	20-Oct-13
10905.00	58.33	359.18	10766.61	368.99	368.82	-32.49	7.19	Run1	SlimPulse	370.25	354.97	20-Oct-13
10937.00	59.54	0.17	10783.12	396.40	396.23	-32.64	4.61	Run1	SlimPulse	397.57	355.29	20-Oct-13
10968.00	60.07	0.40	10798.71	423.19	423.02	-32.51	1.83	Run1	SlimPulse	424.27	355.61	21-Oct-13
10999.00	62.45	0.23	10813.62	450.37	450.20	-32.36	7.70	Run1	SlimPulse	451.36	355.89	21-Oct-13
11031.00	66.94	0.84	10827.29	479.28	479.12	-32.09	14.13	Run1	SlimPulse	480.20	356.17	21-Oct-13
11062.00	71.26	1.29	10838.35	508.23	508.07	-31.55	14.01	Run1	SlimPulse	509.05	356.45	21-Oct-13
11094.00	74.57	1.71	10847.75	538.80	538.64	-30.75	10.39	Run1	SlimPulse	539.52	356.73	21-Oct-13
11125.00	77.38	1.68	10855.26	568.85	568.70	-29.86	9.09	Run1	SlimPulse	569.49	356.99	21-Oct-13
11156.00	79.28	2.55	10861.53	599.18	599.04	-28.74	6.72	Run1	SlimPulse	599.73	357.25	21-Oct-13
11188.00	84.35	2.30	10866.08	630.81	630.68	-27.40	15.85	Run1	SlimPulse	631.27	357.51	21-Oct-13
11251.00	91.96	2.59	10868.11	693.66	693.54	-24.72	12.09	Run1	SlimPulse	693.98	357.96	21-Oct-13
11285.00	92.96	2.35	10866.65	727.59	727.48	-23.25	3.04	Run2	SlimPulse	727.85	358.17	22-Oct-13
11379.00	92.65	1.35	10862.05	821.41	821.31	-20.23	1.12	Run2	SlimPulse	821.56	358.59	22-Oct-13
11474.00	89.21	359.83	10860.50	916.37	916.28	-19.25	3.96	Run2	SlimPulse	916.48	358.8	22-Oct-13
11568.00	88.00	359.89	10862.79	1010.34	1010.25	-19.49	1.29	Run2	SlimPulse	1010.44	358.89	22-Oct-13
11663.00	88.69	0.11	10865.53	1105.30	1105.21	-19.49	0.76	Run2	SlimPulse	1105.38	358.99	23-Oct-13
11757.00	90.34	0.26	10866.32	1199.29	1199.20	-19.19	1.77	Run2	SlimPulse	1199.36	359.08	23-Oct-13
11851.00	90.58	1.32	10865.56	1293.26	1293.19	-17.90	1.16	Run2	SlimPulse	1293.31	359.21	23-Oct-13
11946.00	90.62	1.45	10864.57	1388.22	1388.16	-15.60	0.15	Run2	SlimPulse	1388.24	359.36	23-Oct-13
12040.00	91.17	1.16	10863.10	1482.17	1482.12	-13.46	0.66	Run2	SlimPulse	1482.18	359.48	23-Oct-13
12135.00	91.17	0.05	10861.16	1577.14	1577.09	-12.45	1.17	Run2	SlimPulse	1577.14	359.55	23-Oct-13

12229.00	91.27	358.89	10859.15	1671.11	1671.07	-13.32	1.24	Run2	SlimPulse	1671.12	359.54	23-Oct-13
12323.00	91.38	358.90	10856.98	1765.08	1765.02	-15.13	0.11	Run2	SlimPulse	1765.09	359.51	23-Oct-13
12417.00	90.96	359.10	10855.06	1859.05	1858.99	-16.77	0.49	Run2	SlimPulse	1859.06	359.48	23-Oct-13
12512.00	91.13	359.03	10853.32	1954.03	1953.96	-18.31	0.19	Run2	SlimPulse	1954.05	359.46	23-Oct-13
12606.00	91.20	359.52	10851.40	2048.01	2047.93	-19.50	0.52	Run2	SlimPulse	2048.03	359.45	23-Oct-13
12700.00	90.86	358.44	10849.71	2141.98	2141.90	-21.18	1.20	Run2	SlimPulse	2142.01	359.43	23-Oct-13
12794.00	90.38	358.33	10848.69	2235.95	2235.86	-23.82	0.52	Run3	SlimPulse	2235.99	359.39	24-Oct-13
12888.00	89.07	358.79	10849.14	2329.93	2329.83	-26.18	1.47	Run3	SlimPulse	2329.97	359.36	25-Oct-13
12982.00	88.59	358.65	10851.06	2423.90	2423.78	-28.28	0.53	Run3	SlimPulse	2423.95	359.33	25-Oct-13
13076.00	88.59	358.62	10853.37	2517.85	2517.73	-30.51	0.03	Run3	SlimPulse	2517.91	359.31	25-Oct-13
13171.00	88.69	356.70	10855.62	2612.76	2612.62	-34.39	2.03	Run3	SlimPulse	2612.84	359.25	25-Oct-13
13265.00	88.69	356.61	10857.77	2706.60	2706.43	-39.87	0.09	Run3	SlimPulse	2706.73	359.16	25-Oct-13
13360.00	88.66	357.53	10859.97	2801.48	2801.28	-44.72	0.96	Run3	SlimPulse	2801.64	359.09	25-Oct-13
13454.00	88.66	358.50	10862.17	2895.41	2895.20	-47.98	1.04	Run3	SlimPulse	2895.60	359.05	25-Oct-13
13548.00	88.73	358.83	10864.32	2989.37	2989.15	-50.18	0.36	Run3	SlimPulse	2989.57	359.04	25-Oct-13
13643.00	88.83	359.78	10866.34	3084.34	3084.12	-51.33	1.01	Run3	SlimPulse	3084.55	359.05	25-Oct-13
13737.00	88.69	1.82	10868.37	3178.30	3178.08	-50.02	2.17	Run3	SlimPulse	3178.48	359.1	25-Oct-13
13832.00	88.93	4.28	10870.34	3273.11	3272.92	-44.97	2.60	Run3	SlimPulse	3273.23	359.21	25-Oct-13
13926.00	88.80	2.68	10872.20	3366.88	3366.73	-39.27	1.71	Run3	SlimPulse	3366.95	359.33	25-Oct-13
14020.00	88.62	2.89	10874.32	3460.72	3460.59	-34.70	0.29	Run3	SlimPulse	3460.76	359.43	25-Oct-13
14114.00	88.69	4.39	10876.52	3554.47	3554.37	-28.73	1.60	Run3	SlimPulse	3554.49	359.54	25-Oct-13
14209.00	89.38	4.10	10878.12	3649.16	3649.10	-21.70	0.79	Run3	SlimPulse	3649.16	359.66	25-Oct-13
14303.00	89.52	2.64	10879.02	3742.96	3742.93	-16.17	1.55	Run3	SlimPulse	3742.96	359.75	25-Oct-13
14397.00	90.07	0.16	10879.36	3836.91	3836.89	-13.88	2.71	Run3	SlimPulse	3836.92	359.79	25-Oct-13
14492.00	90.62	356.82	10878.79	3931.87	3931.84	-16.38	3.55	Run3	SlimPulse	3931.88	359.76	25-Oct-13
14586.00	90.14	354.94	10878.16	4025.66	4025.59	-23.13	2.07	Run3	SlimPulse	4025.66	359.67	25-Oct-13
14681.00	90.45	355.33	10877.68	4120.36	4120.25	-31.20	0.53	Run3	SlimPulse	4120.37	359.57	25-Oct-13
14775.00	90.41	357.12	10876.97	4214.18	4214.04	-37.39	1.90	Run3	SlimPulse	4214.20	359.49	26-Oct-13
14870.00	90.62	356.40	10876.12	4309.05	4308.88	-42.76	0.79	Run3	SlimPulse	4309.09	359.43	26-Oct-13
14964.00	90.31	354.52	10875.36	4402.78	4402.58	-50.20	2.03	Run3	SlimPulse	4402.87	359.35	26-Oct-13
15058.00	90.45	353.22	10874.74	4496.29	4496.04	-60.23	1.39	Run3	SlimPulse	4496.44	359.23	26-Oct-13
15162.00	90.45	353.22	10873.92	4599.62	4599.31	-72.51	0.00	Run3	PROJECTION	4599.88	359.1	26-Oct-13