

DISTRICT I
1625 N. French Dr., Hobbs, NM 88240
Phone (575) 393-6161 Fax: (575) 393-6162

DISTRICT II
811 S. First St., Artesia, NM 88210
Phone (575) 748-1283 Fax: (575) 748-9220

DISTRICT III
1000 Rio Brazos Rd., Aztec, NM 87410
Phone (505) 394-6178 Fax: (505) 394-6170

DISTRICT IV
1220 S. St. Francis Dr., Santa Fe, NM 87505
Phone (505) 476-3460 Fax: (505) 476-3462

HOBBS OCD
NOV 12 2014
RECEIVED

State of New Mexico
Energy, Minerals and Natural Resources Department

Form C-102
Revised August 1, 2011

Submit one copy to appropriate District Office

OIL CONSERVATION DIVISION
1220 South St. Francis Dr.
Santa Fe, New Mexico 87505

WELL LOCATION AND ACREAGE DEDICATION PLAT **AMENDED REPORT**

API Number 30-025-42205		Pool Code 52766	Pool Name Rock Lake; Bone Spring
Property Code 313821	Property Name TRUSS BVT STATE		Well Number 1H
OGRID No. 025575	Operator Name YATES PETROLEUM CORPORATION		Elevation 3536

Surface Location

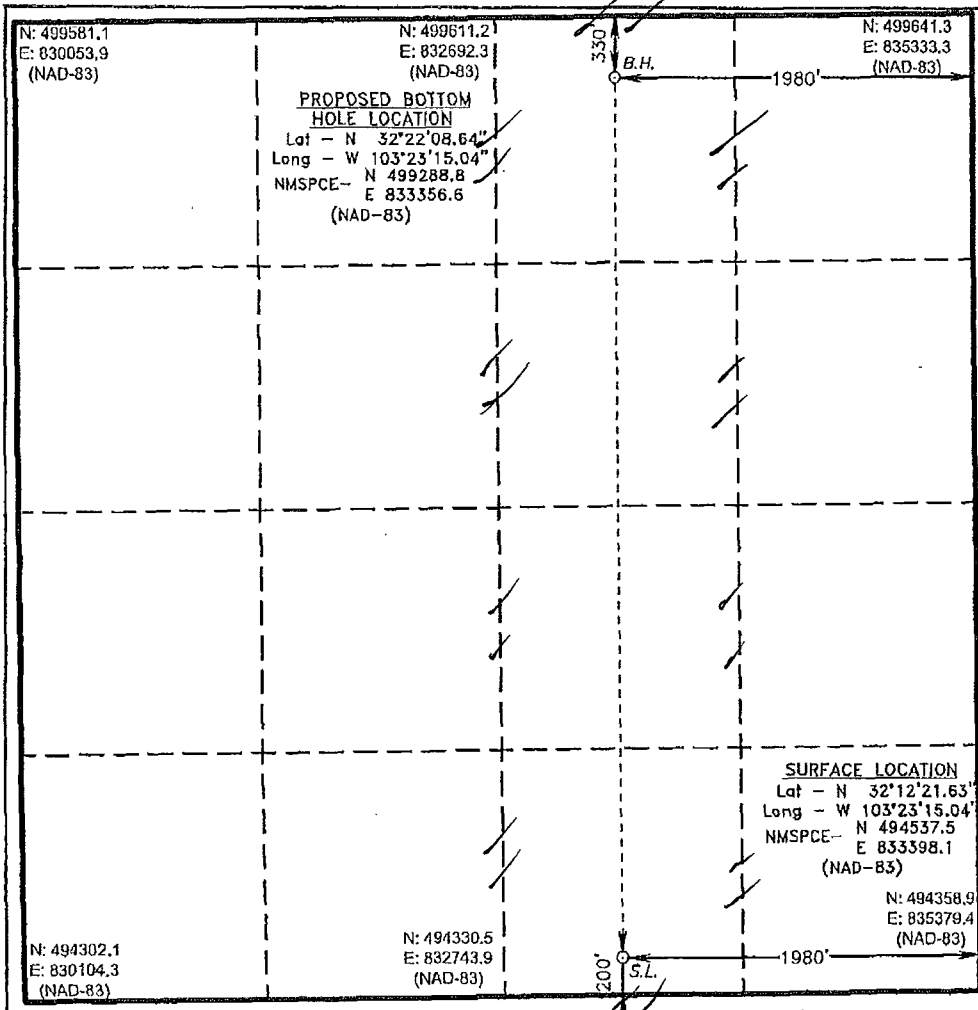
UL or lot No.	Section	Township	Range	Lot Idn	Feet from the	North/South line	Feet from the	East/West line	County
0	29	22 S	35 E		200	SOUTH	1980	EAST	LEA

Bottom Hole Location If Different From Surface

UL or lot No.	Section	Township	Range	Lot Idn	Feet from the	North/South line	Feet from the	East/West line	County
B	29	22 S	35 E		330	NORTH	1980	EAST	LEA

Dedicated Acres 160.00	Joint or Infill	Consolidation Code	Order No.
----------------------------------	-----------------	--------------------	-----------

NO ALLOWABLE WILL BE ASSIGNED TO THIS COMPLETION UNTIL ALL INTERESTS HAVE BEEN CONSOLIDATED OR A NON-STANDARD UNIT HAS BEEN APPROVED BY THE DIVISION



OPERATOR CERTIFICATION

I hereby certify that the information contained herein is true and complete to the best of my knowledge and belief, and that this organization either owns a working interest or unleased mineral interest in the land including the proposed bottom hole location or has a right to drill this well at this location pursuant to a contract with an owner of such a mineral or working interest, or to a voluntary pooling agreement or a compulsory pooling order heretofore entered by the division.

Ysenia Navarrette
 Signature Date

Ysenia Navarrette
 Printed Name
 ynavarrette@yatespetroleum.com
 Email Address

SURVEYOR CERTIFICATION

I hereby certify that the well location shown on this plat was plotted from field notes of actual surveys made by me or under my supervision, and that the same is true and correct to the best of my belief.

OCTOBER 17 2014
 Date Surveyed

[Signature]
 Signature of Professional Surveyor

7977
 Certificate No. (Professional Land Surveyor)

GOV. MONTE G. LEITCH
 GOVERNOR

0' 500' 1000' 1500' 2000'
 SCALE: 1" = 1000'
 WO Num.: 31121

NOV 13 2014