

District I
1625 N. French Dr. Hobbs, NM 88240
Phone: (575) 393-6161 Fax: (575) 393-0720
District II
811 S. First St., Artesia, NM 88210
Phone: (575) 748-1283 Fax: (575) 748-9720
District III
1000 Rio Brazos Road, Aztec, NM 87410
Phone: (505) 334-6178 Fax: (505) 334-6170
District IV
1230 S. St. Francis Dr., Sante Fe, NM 87505
Phone: (505) 476-3460 Fax: (505) 476-3462

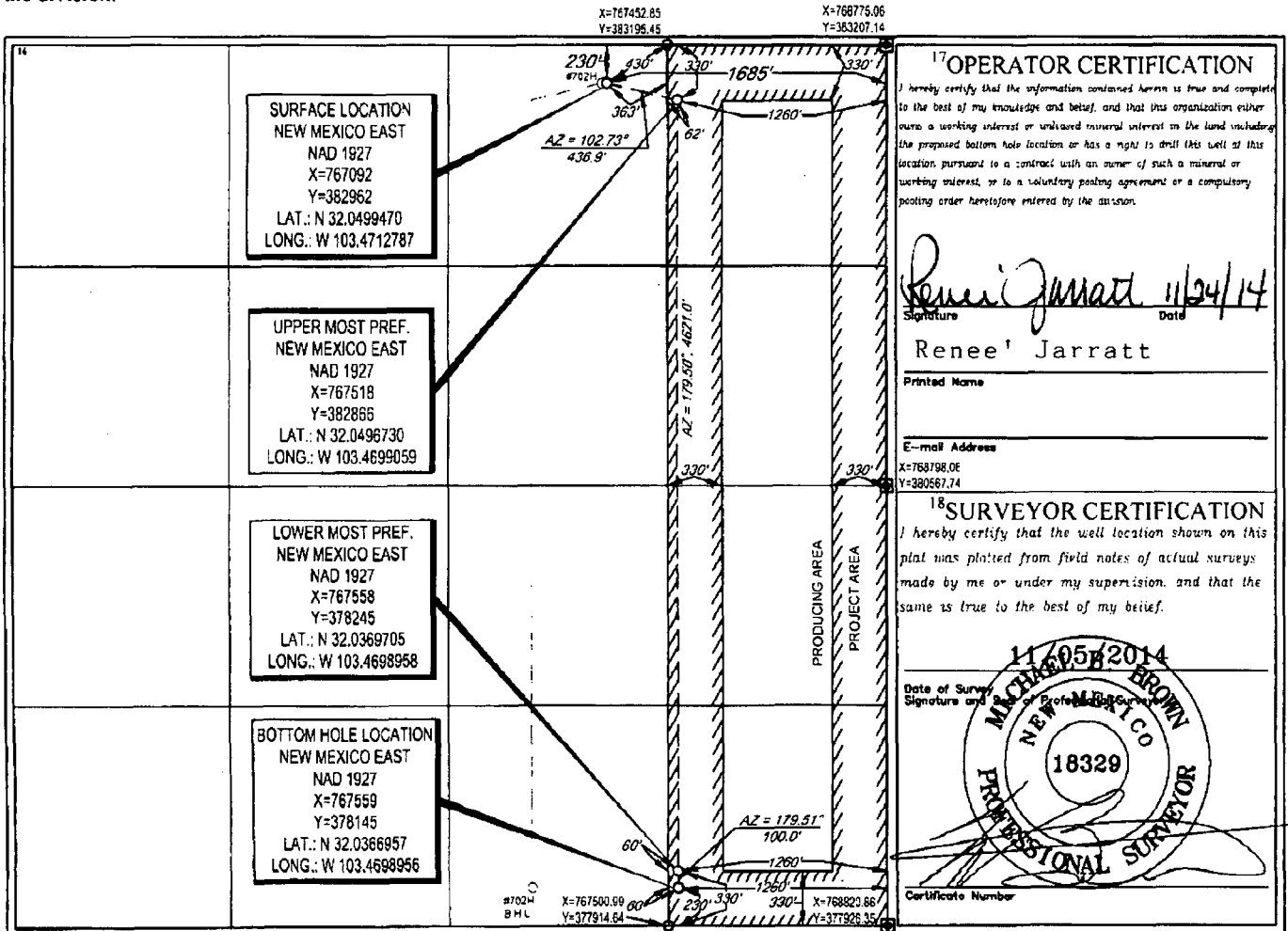
State of New Mexico
Energy, Minerals & Natural Resources
Department
OIL CONSERVATION DIVISION
1220 South St. Francis Dr.
Sante Fe, NM 87505

FORM C-102
Revised August 1, 2011
Submit one copy to appropriate
District Office
 AMENDED REPORT

WELL LOCATION AND ACREAGE DEDICATION PLAT

¹ API Number 30-025 42286		² Pool Code 98105		³ Pool Name WC-025 G-09 5283416 B; UPPER WC					
⁴ Property Code 40383		⁵ Property Name NAUTILUS 16 STATE COM			⁶ Well Number #701H				
⁷ GRID No. 7377		⁸ Operator Name EOG RESOURCES, INC.			⁹ Elevation 3375'				
¹⁰ Surface Location									
¹¹ U/L or lot no. B	¹² Section 16	¹³ Township 26-S	¹⁴ Range 34-E	¹⁵ Lot Idn -	¹⁶ Feet from the 230'	¹⁷ North/South line NORTH	¹⁸ Feet from the 1685'	¹⁹ East/West line EAST	²⁰ County LEA
¹¹ U/L or lot no. P	¹² Section 16	¹³ Township 26-S	¹⁴ Range 34-E	¹⁵ Lot Idn -	¹⁶ Feet from the 230'	¹⁷ North/South line SOUTH	¹⁸ Feet from the 1260'	¹⁹ East/West line EAST	²⁰ County LEA
²¹ Dedicated Acres 160.00		²² Joint or Infill		²³ Consolidation Code		²⁴ Order No.			

No allowable will be assigned to this completion until all interests have been consolidated or a non-standard unit has been approved by the division.



Permit Information:

Well Name: Nautilus 16 State Com No. 701H

Location:

SL: 230' FNL & 1685' FEL, Section 16, T-26-S, R-34-E, Lea Co., N.M.

BHL: 230' FSL & 1260' FEL, Section 16, T-26-S, R-34-E, Lea Co., N.M.

Casing Program:

Hole Size	Interval	Csg OD	Weight	Grade	Conn	DF _{min} Collapse	DF _{min} Burst	DF _{min} Tension
12.25"	0 - 1,000'	9.625"	40#	J55	STC	1.125	1.25	1.60
8.75"	0-11,500'	7"	26#	HCP-110	LTC	1.125	1.25	1.60
6.125"	0'-17,656'	4.5"	13.5#	HCP-110	BTC	1.125	1.25	1.60

Cement Program:

Depth	No. Sacks	Wt. ppg	Yld Ft ³ /ft	Slurry Description
1,000'	350	13.5	1.73	Class C + 4.0% Bentonite + 0.6% CD-32 + 0.5% CaCl ₂ + 0.25 lb/sk Cello-Flake (TOC @ Surface)
	200	14.8	1.34	Class C + 0.6% FL-62 + 0.25 lb/sk Cello-Flake + 0.2% Sodium Metasilicate
11,500' DV Tool @ 5,200'	300	10.8	3.68	Stage 1 Lead: Class C + 15.00 lbs/sk BA-90 + 4.00% MPA-5 + 3.00% SMS + 5.00% A-10 + 1.00% BA-10A + 0.80% ASA-301 + 2.90% R-21 + 8.00 lb/sk LCM-1 + 0.005 lb/sx Static Free
	200	14.2	1.32	Stage 1 Tail: Class H + 0.65% FL-52 + 0.6% CD-32 + 1.0% EC-1 + 0.65% SMS + 2.0% Salt + 0.2% R-21 + 0.005 gps FP-6L + 0.005 pps Static Free
	400	12.7	2.22	Stage 2 Lead: Class 'C' + 2.0% SMS + 10.0% Slat + 0.55% R-21 + 0.25 pps Celloflake + 0.005 pps Static Free (TOC @ Surface)
	200	14.8	1.35	Stage 2 Tail: Class 'C' + 0.60% FL-62 + 0.7% CD-32 + 0.3% SMS + 2.0% Salt + 0.10% R-3 + 0.005 pps Static Free + 0.005 gps FP-6L
17,656'	575	11.9	2.36	50:50:6 Class H + 0.20% FL-52 + 0.75% CD-32 + 1.0% EC-1 + 0.15% ASA-301 + 1.60% SMS + 5.0% Salt + 0.50% R-21 + 5.0 pps LCM-1 (TOC @ 10,250')
	450	14.2	1.35	50:50:2 Class H + 0.65% FL-52 + 0.70% CD-32 + 1.0% EC-1 + 0.40% SMS + 2.0% Salt + 0.05% R-3 + 0.005 pps Static Free + 0.005 gps FP-6L

Mud Program:

Depth	Type	Weight (ppg)	Viscosity	Water Loss
0 - 1,000'	Fresh - Gel	8.6-8.8	28-34	N/c
1,000' - 11,500'	Oil Base	8.7-9.4	58-68	N/c - 6
11,500' - 12,374'	Oil Base	8.7-9.4	58-68	N/c - 6
12,374' - 17,656' Lateral	Oil Base	9.0-9.5	58-68	N/c - 6

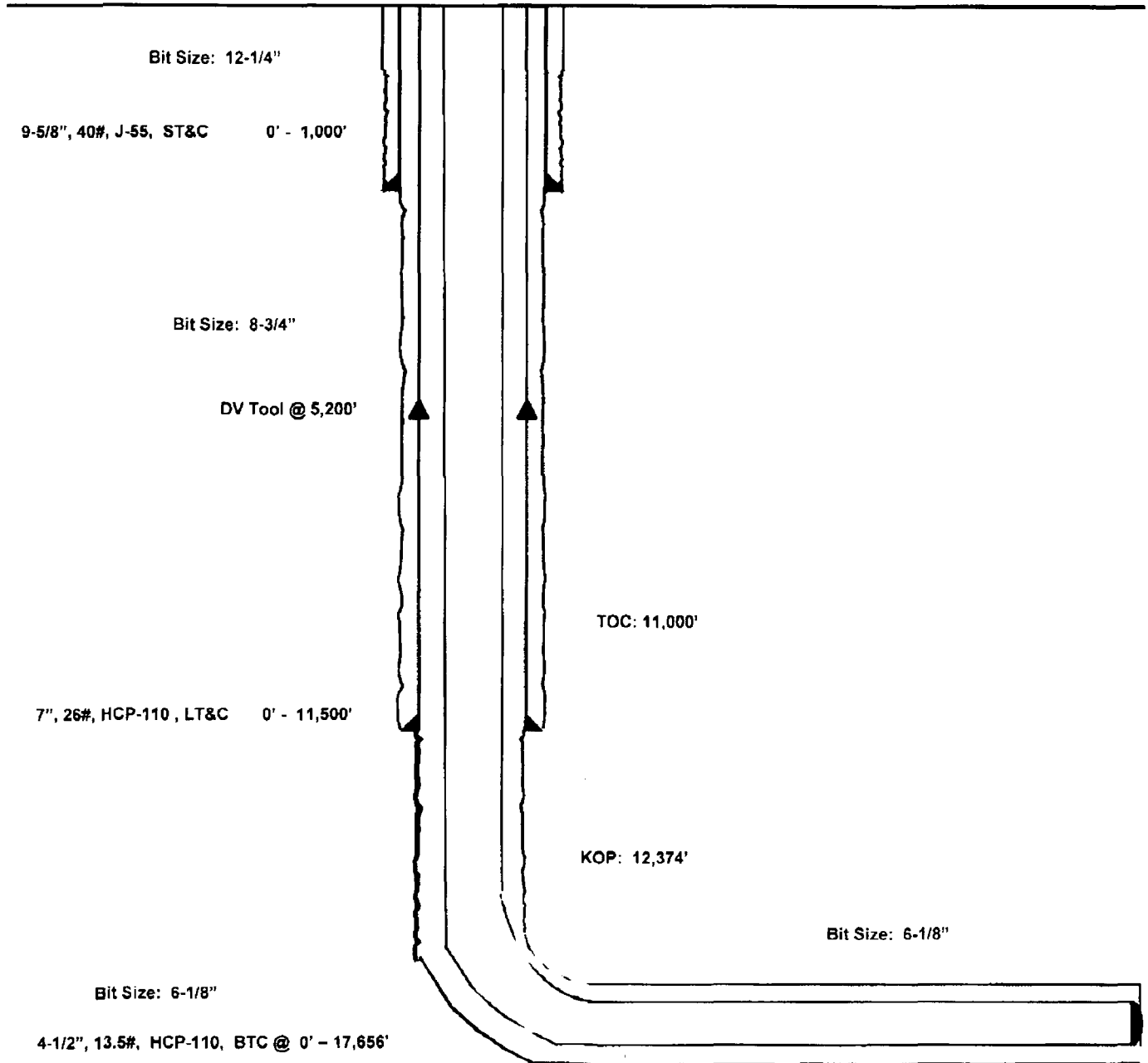
Nautilus 16 State Com #701H

Lea County, New Mexico
Proposed Wellbore

230' FNL
1685' FEL
Section 16
T-26-S, R-34-E

API: 30-025-*****

KB: 3,400'
GL: 3,375'



Lateral: 17,656' MD, 12,850' TVD
BH Location: 230' FSL & 1260' FEL
Section 16
T-26-S, R-34-E



Lea County, NM (NAD 27 NME)

Nautilus 16 State Com #701H

Plan #1

PROJECT DETAILS: Lea County, NM (NAD 27 NME)

Geodetic System: US State Plane 1927 (Exact solution)
Datum: NAD 1927 (NAODCON CONUS)
Ellipsoid: Clarke 1866
Zone: New Mexico East 3001
System Datum: Mean Sea Level

WELL DETAILS: #701H

Ground Level: 3378.0
KB = 25 @ 3400 DuR
Northing 387962.00 Easting 787092.00 LATITUDE 32° 2' 59.806 N Longitude 103° 28' 16.501 W



Admuths to Grid North
True North: -0.48°
Magnetic North: 6.56°

Magnetic Field
Strength: 48178.6 nT
Dip Angle: -59.30°
Date: 11/2/2014
Model: IGRF201014

To convert a Magnetic Direction to a Grid Direction: Add 6.56°
To convert a Magnetic Direction to a True Direction: Add 7.10° East
To convert a True Direction to a Grid Direction: Subtract 0.46°

SECTION DETAILS

Sec	MD	Inc	Azi	TVD	46-U	46-JW	Dlog	TFace	VFace	Target	Amortization
1	0.0	0.00	0.00	0.0	0.0	0.0	0.00	0.00	0.0		
2	3000.0	0.00	0.00	8000.0	0.0	0.0	0.00	0.00	0.0		
3	8344.7	3.47	65.59	5346.5	4.5	8.5	1.00	88.88	3.4		
4	12374.7	3.47	65.59	12381.8	100.0	339.5	0.89	0.00	-149.3		
5	19338.4	90.00	179.50	12850.0	-297.1	427.7	17.00	113.88	337.0		
6	17662.5	90.00	179.50	12850.0	-4817.0	487.4	0.89	0.00	-4839.4		

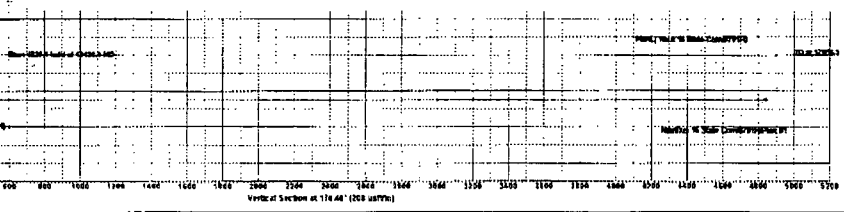
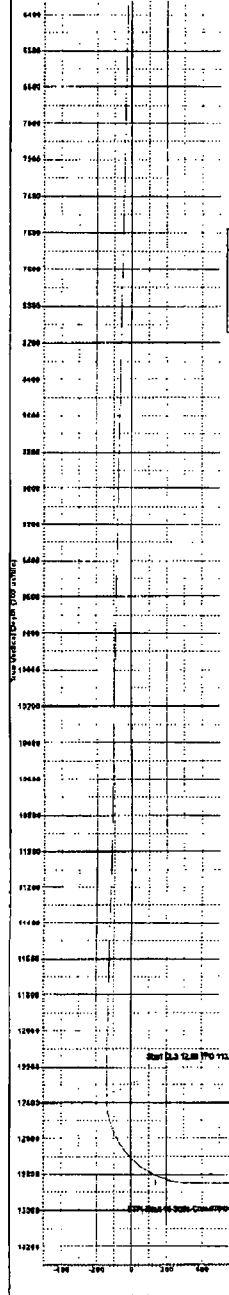
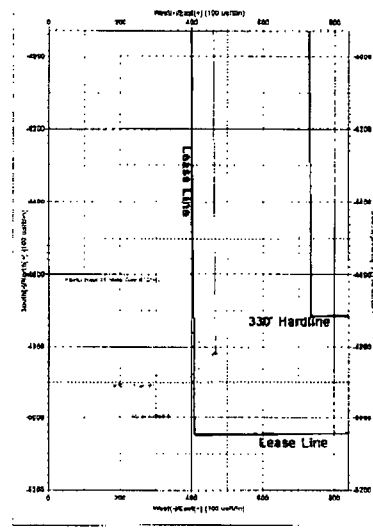
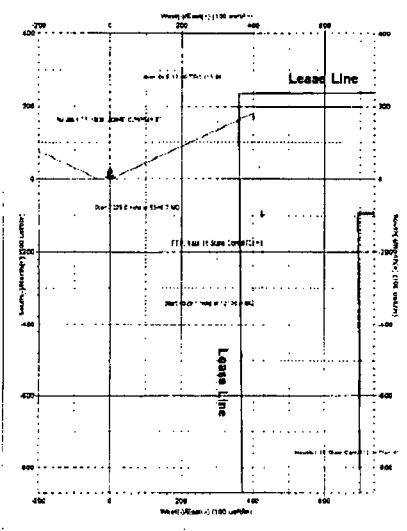
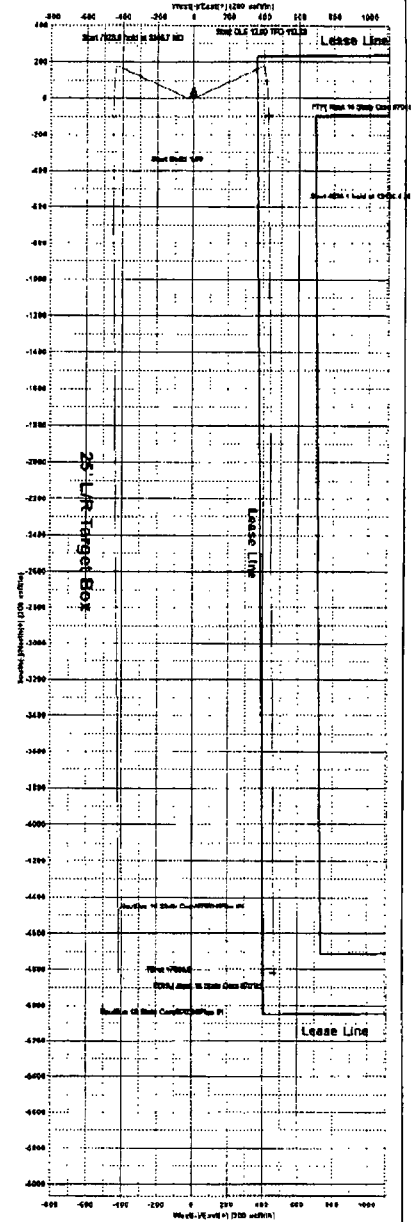
PBHL (Nautilus 16 State Com #701H)

CASING DETAILS

No casing data is available

WELLDONE TARGET DETAILS (MAP COORDINATES)

Name	TVD	46-U	46-JW	Northing	Easting
FTY Nautilus 16 State Com #701H	12850.0	-98.0	428.0	387962.00	787092.00
PBHL Nautilus 16 State Com #701H	12850.0	-4817.0	487.0	378145.00	767568.00





EOG Resources - Midland

Lea County, NM (NAD 27 NME)

Nautilus 16 State Com

#701H

OH

Plan: Plan #1

EOG PVA

24 November, 2014



EOG Resources, Inc.
EOG PVA

Company: EOG Resources - Midland
Project: Lea County, NM (NAD 27 NME)
Site: Nautilus 16 State Com
Well: #701H
Wellbore: OH
Design: Plan #1

Local Co-ordinate Reference: Well #701H
TVD Reference: KB = 25 @ 3400.0usft
MD Reference: KB = 25 @ 3400.0usft
North Reference: Grid
Survey Calculation Method: Minimum Curvature
Database: EDM 5000.1 Single User Db

Project	Lea County, NM (NAD 27 NME)		
Map System:	US State Plane 1927 (Exact solution)	System Datum:	Mean Sea Level
Geo Datum:	NAD 1927 (NADCON CONUS)		
Map Zone:	New Mexico East 3001		

Site	Nautilus 16 State Com		
Site Position:		Northing:	382,984.00 usft
From:	Map	Easting:	768,397.00 usft
Position Uncertainty:	0.0 usft	Slot Radius:	13-3/16 "
		Latitude:	32° 2' 59.921 N
		Longitude:	103° 28' 1.438 W
		Grid Convergence:	0.46 °

Well	#701H		
Well Position	+N-S	0.0 usft	Northing: 382,962.00 usft
	+E-W	0.0 usft	Easting: 767,092.00 usft
Position Uncertainty		0.0 usft	Wellhead Elevation: 0.0 usft
			Latitude: 32° 2' 59.806 N
			Longitude: 103° 28' 16.601 W
			Ground Level: 3,375.0 usft

Wellbore	OH				
Magnetics	Model Name	Sample Date	Declination (°)	Dip Angle (°)	Field Strength (nT)
	IGRF201014	11/21/2014	7.10	59.96	48,179

Design	Plan #1			
Audit Notes:				
Version:	Phase:	PLAN	Tie On Depth: 0.0	
Vertical Section:	Depth From (TVD) (usft)	+N-S (usft)	+E-W (usft)	Direction (°)
	0.0	0.0	0.0	174.46

Survey Tool Program	Date	11/21/2014		
From (usft)	To (usft)	Survey (Wellbore)	Tool Name	Description
0.0	17,656.5	Plan #1 (OH)	MWD	MWD - Standard



EOG Resources, Inc.
EOG PVA

Company: EOG Resources - Midland
 Project: Lea County, NM (NAD 27 NME)
 Site: Nautilus 16 State Com
 Well: #701H
 Wellbore: OH
 Design: Plan #1

Local Co-ordinate Reference: Well #701H
 TVD Reference: KB = 25 @ 3400.0usft
 MD Reference: KB = 25 @ 3400.0usft
 North Reference: Grid
 Survey Calculation Method: Minimum Curvature
 Database: EDM 5000.1 Single User Db

Planned Survey

MD (usft)	Inc (°)	Azi (grid_north_azim)	TVD (usft)	N/S (usft)	E/W (usft)	DLeg (°/100usft)	Build (°/100usft)	Turn (°/100usft)	High to Plan (usft)	Right to Plan (usft)
0.0	0.00	0.00	0.0	0.0	0.0	0.00	0.00	0.00		
100.0	0.00	0.00	100.0	0.0	0.0	0.00	0.00	0.00		
200.0	0.00	0.00	200.0	0.0	0.0	0.00	0.00	0.00		
300.0	0.00	0.00	300.0	0.0	0.0	0.00	0.00	0.00		
400.0	0.00	0.00	400.0	0.0	0.0	0.00	0.00	0.00		
500.0	0.00	0.00	500.0	0.0	0.0	0.00	0.00	0.00		
600.0	0.00	0.00	600.0	0.0	0.0	0.00	0.00	0.00		
700.0	0.00	0.00	700.0	0.0	0.0	0.00	0.00	0.00		
800.0	0.00	0.00	800.0	0.0	0.0	0.00	0.00	0.00		
900.0	0.00	0.00	900.0	0.0	0.0	0.00	0.00	0.00		
1,000.0	0.00	0.00	1,000.0	0.0	0.0	0.00	0.00	0.00		
1,100.0	0.00	0.00	1,100.0	0.0	0.0	0.00	0.00	0.00		
1,200.0	0.00	0.00	1,200.0	0.0	0.0	0.00	0.00	0.00		
1,300.0	0.00	0.00	1,300.0	0.0	0.0	0.00	0.00	0.00		
1,400.0	0.00	0.00	1,400.0	0.0	0.0	0.00	0.00	0.00		
1,500.0	0.00	0.00	1,500.0	0.0	0.0	0.00	0.00	0.00		
1,600.0	0.00	0.00	1,600.0	0.0	0.0	0.00	0.00	0.00		
1,700.0	0.00	0.00	1,700.0	0.0	0.0	0.00	0.00	0.00		
1,800.0	0.00	0.00	1,800.0	0.0	0.0	0.00	0.00	0.00		
1,900.0	0.00	0.00	1,900.0	0.0	0.0	0.00	0.00	0.00		
2,000.0	0.00	0.00	2,000.0	0.0	0.0	0.00	0.00	0.00		
2,100.0	0.00	0.00	2,100.0	0.0	0.0	0.00	0.00	0.00		
2,200.0	0.00	0.00	2,200.0	0.0	0.0	0.00	0.00	0.00		
2,300.0	0.00	0.00	2,300.0	0.0	0.0	0.00	0.00	0.00		
2,400.0	0.00	0.00	2,400.0	0.0	0.0	0.00	0.00	0.00		
2,500.0	0.00	0.00	2,500.0	0.0	0.0	0.00	0.00	0.00		
2,600.0	0.00	0.00	2,600.0	0.0	0.0	0.00	0.00	0.00		



EOG Resources, Inc.
EOG PVA

Company: EOG Resources - Midland
 Project: Lea County, NM (NAD 27 NME)
 Site: Nautilus 16 State Com
 Well: #701H
 Wellbore: OH
 Design: Plan #1

Local Co-ordinate Reference: Well #701H
 TVD Reference: KB = 25 @ 3400.0usft
 MD Reference: KB = 25 @ 3400.0usft
 North Reference: Grid
 Survey Calculation Method: Minimum Curvature
 Database: EDM 5000.1 Single User Db

Planned Survey

MD (usft)	Inc (°)	Azi (grid_north_azim)	TVD (usft)	N/S (usft)	E/W (usft)	DLeg (°/100usft)	Build (°/100usft)	Turn (°/100usft)	High to Plan (usft)	Right to Plan (usft)
2,700.0	0.00	0.00	2,700.0	0.0	0.0	0.00	0.00	0.00		
2,800.0	0.00	0.00	2,800.0	0.0	0.0	0.00	0.00	0.00		
2,900.0	0.00	0.00	2,900.0	0.0	0.0	0.00	0.00	0.00		
3,000.0	0.00	0.00	3,000.0	0.0	0.0	0.00	0.00	0.00		
3,100.0	0.00	0.00	3,100.0	0.0	0.0	0.00	0.00	0.00		
3,200.0	0.00	0.00	3,200.0	0.0	0.0	0.00	0.00	0.00		
3,300.0	0.00	0.00	3,300.0	0.0	0.0	0.00	0.00	0.00		
3,400.0	0.00	0.00	3,400.0	0.0	0.0	0.00	0.00	0.00		
3,500.0	0.00	0.00	3,500.0	0.0	0.0	0.00	0.00	0.00		
3,600.0	0.00	0.00	3,600.0	0.0	0.0	0.00	0.00	0.00		
3,700.0	0.00	0.00	3,700.0	0.0	0.0	0.00	0.00	0.00		
3,800.0	0.00	0.00	3,800.0	0.0	0.0	0.00	0.00	0.00		
3,900.0	0.00	0.00	3,900.0	0.0	0.0	0.00	0.00	0.00		
4,000.0	0.00	0.00	4,000.0	0.0	0.0	0.00	0.00	0.00		
4,100.0	0.00	0.00	4,100.0	0.0	0.0	0.00	0.00	0.00		
4,200.0	0.00	0.00	4,200.0	0.0	0.0	0.00	0.00	0.00		
4,300.0	0.00	0.00	4,300.0	0.0	0.0	0.00	0.00	0.00		
4,400.0	0.00	0.00	4,400.0	0.0	0.0	0.00	0.00	0.00		
4,500.0	0.00	0.00	4,500.0	0.0	0.0	0.00	0.00	0.00		
4,600.0	0.00	0.00	4,600.0	0.0	0.0	0.00	0.00	0.00		
4,700.0	0.00	0.00	4,700.0	0.0	0.0	0.00	0.00	0.00		
4,800.0	0.00	0.00	4,800.0	0.0	0.0	0.00	0.00	0.00		
4,900.0	0.00	0.00	4,900.0	0.0	0.0	0.00	0.00	0.00		
5,000.0	0.00	0.00	5,000.0	0.0	0.0	0.00	0.00	0.00		
5,100.0	1.00	65.59	5,100.0	0.4	0.8	1.00	1.00	0.00		
5,200.0	2.00	65.59	5,200.0	1.4	3.2	1.00	1.00	0.00		
5,300.0	3.00	65.59	5,299.9	3.2	7.2	1.00	1.00	0.00		



EOG Resources, Inc.
EOG PVA

Company: EOG Resources - Midland
Project: Lea County, NM (NAD 27 NME)
Site: Nautilus 16 State Com
Well: #701H
Wellbore: OH
Design: Plan #1

Local Co-ordinate Reference: Well #701H
TVD Reference: KB = 25 @ 3400.0usft
MD Reference: KB = 25 @ 3400.0usft
North Reference: Grid
Survey Calculation Method: Minimum Curvature
Database: EDM 5000.1 Single User Db

Planned Survey

MD (usft)	inc (°)	Azi (grid_north_azim)	TVD (usft)	N/S (usft)	E/W (usft)	DLeg (°/100usft)	Build (°/100usft)	Turn (°/100usft)	High to Plan (usft)	Right to Plan (usft)
5,346.7	3.47	65.59	5,346.5	4.3	9.5	1.00	1.00	0.00		
5,400.0	3.47	65.59	5,399.7	5.7	12.5	0.00	0.00	0.00		
5,500.0	3.47	65.59	5,499.5	8.2	18.0	0.00	0.00	0.00		
5,600.0	3.47	65.59	5,599.3	10.7	23.5	0.00	0.00	0.00		
5,700.0	3.47	65.59	5,699.1	13.2	29.0	0.00	0.00	0.00		
5,800.0	3.47	65.59	5,799.0	15.7	34.5	0.00	0.00	0.00		
5,900.0	3.47	65.59	5,898.8	18.2	40.0	0.00	0.00	0.00		
6,000.0	3.47	65.59	5,998.6	20.7	45.5	0.00	0.00	0.00		
6,100.0	3.47	65.59	6,098.4	23.2	51.0	0.00	0.00	0.00		
6,200.0	3.47	65.59	6,198.2	25.7	56.5	0.00	0.00	0.00		
6,300.0	3.47	65.59	6,298.0	28.2	62.0	0.00	0.00	0.00		
6,400.0	3.47	65.59	6,397.9	30.7	67.6	0.00	0.00	0.00		
6,500.0	3.47	65.59	6,497.7	33.2	73.1	0.00	0.00	0.00		
6,600.0	3.47	65.59	6,597.5	35.7	78.6	0.00	0.00	0.00		
6,700.0	3.47	65.59	6,697.3	38.2	84.1	0.00	0.00	0.00		
6,800.0	3.47	65.59	6,797.1	40.7	89.6	0.00	0.00	0.00		
6,900.0	3.47	65.59	6,896.9	43.2	95.1	0.00	0.00	0.00		
7,000.0	3.47	65.59	6,996.8	45.7	100.6	0.00	0.00	0.00		
7,100.0	3.47	65.59	7,096.6	48.2	106.1	0.00	0.00	0.00		
7,200.0	3.47	65.59	7,196.4	50.7	111.6	0.00	0.00	0.00		
7,300.0	3.47	65.59	7,296.2	53.2	117.1	0.00	0.00	0.00		
7,400.0	3.47	65.59	7,396.0	55.7	122.6	0.00	0.00	0.00		
7,500.0	3.47	65.59	7,495.8	58.2	128.1	0.00	0.00	0.00		
7,600.0	3.47	65.59	7,595.7	60.7	133.6	0.00	0.00	0.00		
7,700.0	3.47	65.59	7,695.5	63.2	139.1	0.00	0.00	0.00		
7,800.0	3.47	65.59	7,795.3	65.7	144.6	0.00	0.00	0.00		
7,900.0	3.47	65.59	7,895.1	68.2	150.1	0.00	0.00	0.00		



EOG Resources, Inc.
EOG PVA

Company: EOG Resources - Midland
 Project: Lea County, NM (NAD 27 NME)
 Site: Nautilus 16 State Com
 Well: #701H
 Wellbore: OH
 Design: Plan #1

Local Co-ordinate Reference: Well #701H
 TVD Reference: KB = 25 @ 3400.0usft
 MD Reference: KB = 25 @ 3400.0usft
 North Reference: Grid
 Survey Calculation Method: Minimum Curvature
 Database: EDM 5000.1 Single User Db

Planned Survey

MD (usft)	Inc (")	Azi (grid_north_azim)	TVD (usft)	N/S (usft)	E/W (usft)	DLeg ("/100usft)	Build ("/100usft)	Turn ("/100usft)	High to Plan (usft)	Right to Plan (usft)
8,000.0	3.47	65.59	7,994.9	70.7	155.7	0.00	0.00	0.00		
8,100.0	3.47	65.59	8,094.7	73.2	161.2	0.00	0.00	0.00		
8,200.0	3.47	65.59	8,194.6	75.7	166.7	0.00	0.00	0.00		
8,300.0	3.47	65.59	8,294.4	78.2	172.2	0.00	0.00	0.00		
8,400.0	3.47	65.59	8,394.2	80.7	177.7	0.00	0.00	0.00		
8,500.0	3.47	65.59	8,494.0	83.2	183.2	0.00	0.00	0.00		
8,600.0	3.47	65.59	8,593.8	85.7	188.7	0.00	0.00	0.00		
8,700.0	3.47	65.59	8,693.7	88.1	194.2	0.00	0.00	0.00		
8,800.0	3.47	65.59	8,793.5	90.6	199.7	0.00	0.00	0.00		
8,900.0	3.47	65.59	8,893.3	93.1	205.2	0.00	0.00	0.00		
9,000.0	3.47	65.59	8,993.1	95.6	210.7	0.00	0.00	0.00		
9,100.0	3.47	65.59	9,092.9	98.1	216.2	0.00	0.00	0.00		
9,200.0	3.47	65.59	9,192.7	100.6	221.7	0.00	0.00	0.00		
9,300.0	3.47	65.59	9,292.6	103.1	227.2	0.00	0.00	0.00		
9,400.0	3.47	65.59	9,392.4	105.6	232.7	0.00	0.00	0.00		
9,500.0	3.47	65.59	9,492.2	108.1	238.3	0.00	0.00	0.00		
9,600.0	3.47	65.59	9,592.0	110.6	243.8	0.00	0.00	0.00		
9,700.0	3.47	65.59	9,691.8	113.1	249.3	0.00	0.00	0.00		
9,800.0	3.47	65.59	9,791.6	115.6	254.8	0.00	0.00	0.00		
9,900.0	3.47	65.59	9,891.5	118.1	260.3	0.00	0.00	0.00		
10,000.0	3.47	65.59	9,991.3	120.6	265.8	0.00	0.00	0.00		
10,100.0	3.47	65.59	10,091.1	123.1	271.3	0.00	0.00	0.00		
10,200.0	3.47	65.59	10,190.9	125.6	276.8	0.00	0.00	0.00		
10,300.0	3.47	65.59	10,290.7	128.1	282.3	0.00	0.00	0.00		
10,400.0	3.47	65.59	10,390.5	130.6	287.8	0.00	0.00	0.00		
10,500.0	3.47	65.59	10,490.4	133.1	293.3	0.00	0.00	0.00		
10,600.0	3.47	65.59	10,590.2	135.6	298.8	0.00	0.00	0.00		



EOG Resources, Inc.
EOG PVA

Company: EOG Resources - Midland
 Project: Lea County, NM (NAD 27 NME)
 Site: Nautilus 16 State Com
 Well: #701H
 Wellbore: OH
 Design: Plan #1

Local Co-ordinate Reference: Well #701H
 TVD Reference: KB = 25 @ 3400.0usft
 MD Reference: KB = 25 @ 3400.0usft
 North Reference: Grid
 Survey Calculation Method: Minimum Curvature
 Database: EDM 5000.1 Single User Db

Planned Survey

MD (usft)	Inc (°)	Azi (grid_north_azim)	TVD (usft)	N/S (usft)	E/W (usft)	DLeg (°/100usft)	Build (°/100usft)	Turn (°/100usft)	High to Plan (usft)	Right to Plan (usft)
10,700.0	3.47	65.59	10,690.0	138.1	304.3	0.00	0.00	0.00		
10,800.0	3.47	65.59	10,789.8	140.6	309.8	0.00	0.00	0.00		
10,900.0	3.47	65.59	10,889.6	143.1	315.3	0.00	0.00	0.00		
11,000.0	3.47	65.59	10,989.4	145.6	320.9	0.00	0.00	0.00		
11,100.0	3.47	65.59	11,089.3	148.1	326.4	0.00	0.00	0.00		
11,200.0	3.47	65.59	11,189.1	150.6	331.9	0.00	0.00	0.00		
11,300.0	3.47	65.59	11,288.9	153.1	337.4	0.00	0.00	0.00		
11,400.0	3.47	65.59	11,388.7	155.6	342.9	0.00	0.00	0.00		
11,500.0	3.47	65.59	11,488.5	158.1	348.4	0.00	0.00	0.00		
11,600.0	3.47	65.59	11,588.3	160.6	353.9	0.00	0.00	0.00		
11,700.0	3.47	65.59	11,688.2	163.1	359.4	0.00	0.00	0.00		
11,800.0	3.47	65.59	11,788.0	165.6	364.9	0.00	0.00	0.00		
11,900.0	3.47	65.59	11,887.8	168.1	370.4	0.00	0.00	0.00		
12,000.0	3.47	65.59	11,987.6	170.6	375.9	0.00	0.00	0.00		
12,100.0	3.47	65.59	12,087.4	173.1	381.4	0.00	0.00	0.00		
12,200.0	3.47	65.59	12,187.2	175.6	386.9	0.00	0.00	0.00		
12,300.0	3.47	65.59	12,287.1	178.1	392.4	0.00	0.00	0.00		
12,374.7	3.47	65.59	12,361.6	180.0	396.6	0.00	0.00	0.00		
12,400.0	3.57	116.83	12,386.9	180.0	398.0	12.00	0.40	202.17		
12,425.0	5.61	145.22	12,411.8	178.6	399.3	12.00	8.19	113.54		
12,450.0	8.27	157.09	12,436.6	175.9	400.7	12.00	10.60	47.50		
12,475.0	11.09	163.10	12,461.3	172.0	402.1	12.00	11.32	24.02		
12,500.0	13.99	166.66	12,485.7	166.7	403.5	12.00	11.60	14.26		
12,525.0	16.93	169.02	12,509.8	160.2	404.9	12.00	11.74	9.42		
12,550.0	19.88	170.69	12,533.5	152.5	406.3	12.00	11.81	6.70		
12,575.0	22.85	171.95	12,556.8	143.5	407.7	12.00	11.86	5.02		
12,600.0	25.82	172.93	12,579.5	133.2	409.0	12.00	11.89	3.92		



EOG Resources, Inc.
EOG PVA

Company: EOG Resources - Midland
Project: Lea County, NM (NAD 27 NME)
Site: Nautilus 16 State Com
Well: #701H
Wellbore: OH
Design: Plan #1

Local Co-ordinate Reference: Well #701H
TVD Reference: KB = 25 @ 3400.0usft
MD Reference: KB = 25 @ 3400.0usft
North Reference: Grid
Survey Calculation Method: Minimum Curvature
Database: EDM 5000.1 Single User Db

Planned Survey

MD (usft)	Inc (°)	Azi (grid_north_azim)	TVD (usft)	N/S (usft)	E/W (usft)	DLeg (°/100usft)	Build (°/100usft)	Turn (°/100usft)	High to Plan (usft)	Right to Plan (usft)
12,825.0	28.80	173.72	12,601.7	121.9	410.4	12.00	11.91	3.16		
12,850.0	31.78	174.37	12,623.3	109.3	411.7	12.00	11.93	2.61		
12,875.0	34.76	174.93	12,644.2	95.7	412.9	12.00	11.94	2.21		
12,700.0	37.75	175.40	12,664.4	80.9	414.2	12.00	11.95	1.90		
12,725.0	40.74	175.82	12,683.7	65.2	415.4	12.00	11.95	1.66		
12,750.0	43.73	176.18	12,702.3	48.4	416.6	12.00	11.96	1.47		
12,775.0	46.72	176.51	12,719.9	30.7	417.7	12.00	11.96	1.32		
12,800.0	49.71	176.81	12,736.5	12.1	418.8	12.00	11.97	1.19		
12,825.0	52.70	177.08	12,752.2	-7.4	419.8	12.00	11.97	1.09		
12,850.0	55.70	177.34	12,766.8	-27.6	420.8	12.00	11.97	1.01		
12,875.0	58.69	177.57	12,780.3	-48.6	421.7	12.00	11.97	0.94		
12,900.0	61.68	177.79	12,792.8	-70.3	422.6	12.00	11.98	0.88		
12,925.0	64.68	178.00	12,804.0	-92.6	423.4	12.00	11.98	0.83		
12,950.0	67.67	178.20	12,814.1	-115.4	424.2	12.00	11.98	0.79		
12,975.0	70.67	178.39	12,823.0	-138.8	424.9	12.00	11.98	0.76		
13,000.0	73.66	178.57	12,830.7	-162.6	425.5	12.00	11.98	0.73		
13,025.0	76.66	178.75	12,837.1	-186.7	426.1	12.00	11.98	0.71		
13,050.0	79.65	178.92	12,842.2	-211.2	426.6	12.00	11.98	0.69		
13,075.0	82.65	179.09	12,846.1	-235.9	427.0	12.00	11.98	0.68		
13,100.0	85.64	179.26	12,848.6	-260.7	427.4	12.00	11.98	0.67		
13,125.0	88.64	179.43	12,849.9	-285.7	427.6	12.00	11.98	0.67		
13,136.4	90.00	179.50	12,850.0	-297.1	427.7	12.00	11.98	0.66		
13,200.0	90.00	179.50	12,850.0	-360.7	428.3	0.00	0.00	0.00		
13,300.0	90.00	179.50	12,850.0	-460.7	429.2	0.00	0.00	0.00		
13,400.0	90.00	179.50	12,850.0	-560.7	430.0	0.00	0.00	0.00		
13,500.0	90.00	179.50	12,850.0	-660.7	430.9	0.00	0.00	0.00		
13,600.0	90.00	179.50	12,850.0	-760.7	431.8	0.00	0.00	0.00		



EOG Resources, Inc.
EOG PVA

Company: EOG Resources - Midland
 Project: Lea County, NM (NAD 27 NME)
 Site: Nautilus 16 State Com
 Well: #701H
 Wellbore: OH
 Design: Plan #1

Local Co-ordinate Reference: Well #701H
 TVD Reference: KB = 25 @ 3400.0usft
 MD Reference: KB = 25 @ 3400.0usft
 North Reference: Grid
 Survey Calculation Method: Minimum Curvature
 Database: EDM 5000.1 Single User Db

Planned Survey

MD (usft)	Inc (°)	Azi (grid_north_azim)	TVD (usft)	N/S (usft)	E/W (usft)	DLog (°/100usft)	Buid (°/100usft)	Turn (°/100usft)	High to Plan (usft)	Right to Plan (usft)
13,700.0	90.00	179.50	12,850.0	-860.7	432.6	0.00	0.00	0.00		
13,800.0	90.00	179.50	12,850.0	-960.7	433.5	0.00	0.00	0.00		
13,900.0	90.00	179.50	12,850.0	-1,060.7	434.4	0.00	0.00	0.00		
14,000.0	90.00	179.50	12,850.0	-1,160.7	435.2	0.00	0.00	0.00		
14,100.0	90.00	179.50	12,850.0	-1,260.7	436.1	0.00	0.00	0.00		
14,200.0	90.00	179.50	12,850.0	-1,360.7	437.0	0.00	0.00	0.00		
14,300.0	90.00	179.50	12,850.0	-1,460.7	437.9	0.00	0.00	0.00		
14,400.0	90.00	179.50	12,850.0	-1,560.7	438.7	0.00	0.00	0.00		
14,500.0	90.00	179.50	12,850.0	-1,660.7	439.6	0.00	0.00	0.00		
14,600.0	90.00	179.50	12,850.0	-1,760.7	440.5	0.00	0.00	0.00		
14,700.0	90.00	179.50	12,850.0	-1,860.7	441.3	0.00	0.00	0.00		
14,800.0	90.00	179.50	12,850.0	-1,960.6	442.2	0.00	0.00	0.00		
14,900.0	90.00	179.50	12,850.0	-2,060.6	443.1	0.00	0.00	0.00		
15,000.0	90.00	179.50	12,850.0	-2,160.6	443.9	0.00	0.00	0.00		
15,100.0	90.00	179.50	12,850.0	-2,260.6	444.8	0.00	0.00	0.00		
15,200.0	90.00	179.50	12,850.0	-2,360.6	445.7	0.00	0.00	0.00		
15,300.0	90.00	179.50	12,850.0	-2,460.6	446.5	0.00	0.00	0.00		
15,400.0	90.00	179.50	12,850.0	-2,560.6	447.4	0.00	0.00	0.00		
15,500.0	90.00	179.50	12,850.0	-2,660.6	448.3	0.00	0.00	0.00		
15,600.0	90.00	179.50	12,850.0	-2,760.6	449.1	0.00	0.00	0.00		
15,700.0	90.00	179.50	12,850.0	-2,860.6	450.0	0.00	0.00	0.00		
15,800.0	90.00	179.50	12,850.0	-2,960.6	450.9	0.00	0.00	0.00		
15,900.0	90.00	179.50	12,850.0	-3,060.6	451.7	0.00	0.00	0.00		
16,000.0	90.00	179.50	12,850.0	-3,160.6	452.6	0.00	0.00	0.00		
16,100.0	90.00	179.50	12,850.0	-3,260.6	453.5	0.00	0.00	0.00		
16,200.0	90.00	179.50	12,850.0	-3,360.6	454.4	0.00	0.00	0.00		
16,300.0	90.00	179.50	12,850.0	-3,460.6	455.2	0.00	0.00	0.00		



EOG Resources, Inc.
EOG PVA

Company: EOG Resources - Midland
Project: Lea County, NM (NAD 27 NME)
Site: Nautilus 16 State Com
Well: #701H
Wellbore: OH
Design: Plan #1

Local Co-ordinate Reference: Well #701H
TVD Reference: KB = 25 @ 3400.0usft
MD Reference: KB = 25 @ 3400.0usft
North Reference: Grid
Survey Calculation Method: Minimum Curvature
Database: EDM 5000.1 Single User Db

Planned Survey

MD (usft)	Inc (°)	Azi (grid_north_azim)	TVD (usft)	N/S (usft)	E/W (usft)	DLeg (°/100usft)	Build (°/100usft)	Turn (°/100usft)	High to Plan (usft)	Right to Plan (usft)
16,400.0	90.00	179.50	12,850.0	-3,560.6	456.1	0.00	0.00	0.00		
16,500.0	90.00	179.50	12,850.0	-3,660.6	457.0	0.00	0.00	0.00		
16,600.0	90.00	179.50	12,850.0	-3,760.6	457.8	0.00	0.00	0.00		
16,700.0	90.00	179.50	12,850.0	-3,860.6	458.7	0.00	0.00	0.00		
16,800.0	90.00	179.50	12,850.0	-3,960.6	459.6	0.00	0.00	0.00		
16,900.0	90.00	179.50	12,850.0	-4,060.6	460.4	0.00	0.00	0.00		
17,000.0	90.00	179.50	12,850.0	-4,160.6	461.3	0.00	0.00	0.00		
17,100.0	90.00	179.50	12,850.0	-4,260.6	462.2	0.00	0.00	0.00		
17,200.0	90.00	179.50	12,850.0	-4,380.6	463.0	0.00	0.00	0.00		
17,300.0	90.00	179.50	12,850.0	-4,480.6	463.9	0.00	0.00	0.00		
17,400.0	90.00	179.50	12,850.0	-4,560.6	464.8	0.00	0.00	0.00		
17,500.0	90.00	179.50	12,850.0	-4,660.5	465.6	0.00	0.00	0.00		
17,600.0	90.00	179.50	12,850.0	-4,760.5	466.5	0.00	0.00	0.00		
17,656.5	90.00	179.50	12,850.0	-4,817.0	467.0	0.00	0.00	0.00		

Checked By: _____ Approved By: _____ Date: _____

EOG RESOURCES, INC.
NAUTILUS 16 STATE COM #701H

Hydrogen Sulfide Plan Summary

- A. All personnel shall receive proper H₂S training in accordance with Onshore Order III.C.3.a.
- B. Briefing Area: two perpendicular areas will be designated by signs and readily accessible.
- C. Required Emergency Equipment:

- Well control equipment
 - a. Flare line 150' from wellhead to be ignited by flare gun.
 - b. Choke manifold with a remotely operated choke.
 - c. Mud/gas separator

- Protective equipment for essential personnel.

Breathing apparatus:

- a. Rescue Packs (SCBA) — 1 unit shall be placed at each breathing area, 2 shall be stored in the safety trailer.
- b. Work/Escape packs — 4 packs shall be stored on the rig floor th sufficient air hose not to restrict work activity.
- c. Emergency Escape Packs — 4 packs shall be stored in the doghouse for emergency evacuation.

Auxiliary Rescue Equipment:

- a. Stretcher
- b. Two OSHA full body harness
- c. 100 ft 5/8 inch OSHA approved rope
- d. 1-20# class ABC fire extinguisher

- H₂S detection and monitoring equipment:

The stationary detector with three sensors will be placed in the upper dog house if equipped, set to visually alarm @ 10 ppm and audible @ 14 ppm. Calibrate a minimum of every 30 days or as needed. The sensors will be placed in the following places: Rig floor / Bell nipple / End of flow line or where well bore fluid is being discharged.

(Gas sample tubes will be stored in the safety trailer)

- Visual warning systems.
 - a. One color code condition sign will be placed at the entrance to the site reflecting the possible conditions at the site.
 - b. A colored condition flag will be on display, reflecting the current condition at the site at the time.
 - c. Two wind socks will be placed in strategic locations, visible from all angles.

EOG RESOURCES, INC.
NAUTILUS 16 STATE COM #701H

- **Mud program:**
The mud program has been designed to minimize the volume of H₂S circulated to surface. The operator will have the necessary mud products to minimize hazards while drilling in H₂S bearing zones.

- **Metallurgy:**
All drill strings, casings, tubing, wellhead, blowout preventer, drilling spool, kill lines, choke manifold and lines, and valves shall be suitable for H₂S service.

- **Communication:**
Communication will be via cell phones and land lines where available.

**EOG RESOURCES, INC.
NAUTILUS 16 STATE COM #701H**

Emergency Assistance Telephone List

PUBLIC SAFETY: 911 or

Lea County Sheriff's Department	(575) 396-3611
Rod Coffman	
Fire Department:	
Carlsbad	(575) 885-3125
Artesia	(575) 746-5050
Hospitals:	
Carlsbad	(575) 887-4121
Artesia	(575) 748-3333
Hobbs	(575) 392-1979
Dept. of Public Safety/Carlsbad	(575) 748-9718
Highway Department	(575) 885-3281
New Mexico Oil Conservation	(575) 476-3440
U.S. Dept. of Labor	(575) 887-1174

EOG Resources, Inc.

EOG / Midland	Office (432) 686-3600
---------------	-----------------------

Company Drilling Consultants:

Jett Ducitt	Cell (432) 230-4840
Blake Burney	

Drilling Engineer

Robert Brosig	Office (432) 686-3737
	Cell (432) 770-0705

Drilling Manager

Lee Lohoefer	Office (432) 686-6716
	Cell (817) 374-9686

Drilling Superintendent

Jason Richey	Office (432) 686-3665
	Cell (817) 879-6521

H&P Drilling

H&P Drilling	Office (432) 563-5757
H&P 415 Drilling Rig	Rig (432) 230-4840

Tool Pusher:

Johnathan Craig	Cell (817) 760-6374
Brad Garrett	

Safety

Reggie Phillips (HSE Manager)	Office (432) 686-3747
	Cell (432) 250-7507