

District I  
1625 N. French Dr., Hobbs, NM 88240  
Phone: (575) 393-6161 Fax: (575) 393-0720  
District II  
811 S. First St., Artesia, NM 88210  
Phone: (575) 748-1283 Fax: (575) 748-9720  
District III  
1000 Rio Brazos Road, Aztec, NM 87410  
Phone: (505) 334-6178 Fax: (505) 334-6170  
District IV  
1220 S. St. Francis Dr., Sante Fe, NM 87505  
Phone: (505) 476-3460 Fax: (505) 476-3462

State of New Mexico  
Energy, Minerals & Natural Resources  
Department  
OIL CONSERVATION DIVISION  
1220 South St. Francis Dr.  
Sante Fe, NM 87505

FORM C-102  
Revised August 1, 2011  
Submit one copy to appropriate  
District Office

AMENDED REPORT

WELL LOCATION AND ACREAGE DEDICATION PLAT

<sup>1</sup> API Number 30-025- <b>42466</b>		<sup>2</sup> Pool Code 96100	<sup>3</sup> Pool Name SWD; Delaware
<sup>4</sup> Property Code	<sup>5</sup> Property Name CONDOR 32 STATE SWD		<sup>6</sup> Well Number #1
<sup>7</sup> OGRID No. 7377	<sup>8</sup> Operator Name EOG RESOURCES, INC.		<sup>9</sup> Elevation 3320'

<sup>10</sup>Surface Location

UL or lot no.	Section	Township	Range	Lot Idn	Feet from the	North/South line	Feet from the	East/West line	County
G	32	25-S	34-E	-	1823'	NORTH	2200'	EAST	LEA

UL or lot no.	Section	Township	Range	Lot Idn	Feet from the	North/South line	Feet from the	East/West line	County
-	-	-	-	-	-	-	-	-	-

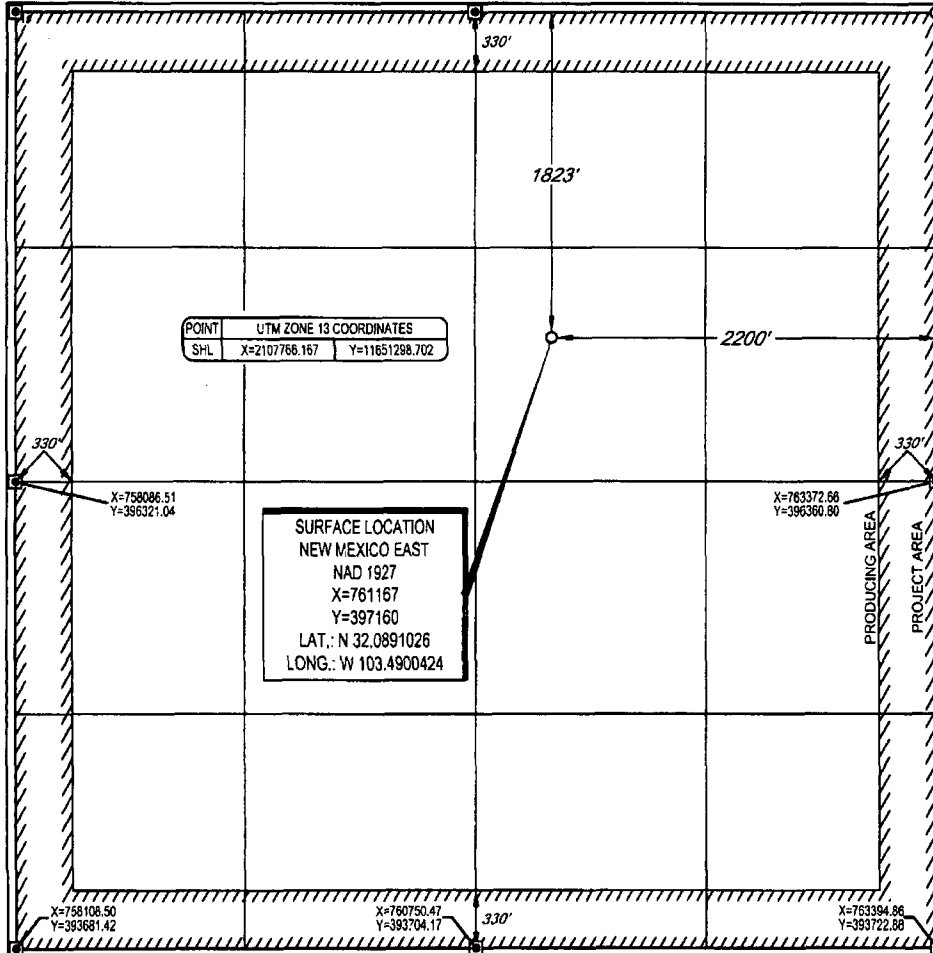
<sup>12</sup> Dedicated Acres <b>640.00</b>	<sup>13</sup> Joint or Infill	<sup>14</sup> Consolidation Code	<sup>15</sup> Order No.
--	-------------------------------	----------------------------------	-------------------------

No allowable will be assigned to this completion until all interests have been consolidated or a non-standard unit has been approved by the division.

X=758064.91  
Y=388959.96

X=760704.47  
Y=388979.90

X=763353.90  
Y=388999.80



POINT UTM ZONE 13 COORDINATES  
SHL X=2107766.157 Y=11651298.702

SURFACE LOCATION  
NEW MEXICO EAST  
NAD 1927  
X=761167  
Y=397160  
LAT.: N 32.0891026  
LONG.: W 103.4900424

<sup>17</sup>OPERATOR CERTIFICATION

I hereby certify that the information contained herein is true and complete to the best of my knowledge and belief, and that this organization either owns a working interest or unleased mineral interest in the land including the proposed bottom hole location or has a right to drill this well at this location pursuant to a contract with an owner of such a mineral or working interest, or to a voluntary pooling agreement or a compulsory pooling order heretofore entered by the division.

*Stan Wagner* 2/25/15  
Signature Date

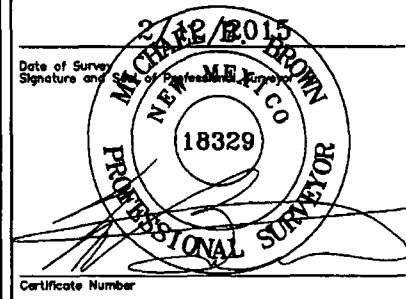
Stan Wagner  
Printed Name

E-mail Address

<sup>18</sup>SURVEYOR CERTIFICATION

I hereby certify that the well location shown on this plat was plotted from field notes of actual surveys made by me or under my supervision, and that the same is true to the best of my belief.

2/25/2015  
Date of Survey  
Signature and Title



Certificate Number

MAR 10 2015

**Permit Information:**

Well Name: Condor 32 State SWD No. 1

Location:

SL: 1,823' FNL & 2200' FEL, Section 32, T-25-S, R-34-E, Lea Co., N.M.

**Casing Program:**

Hole Size	Interval	Csg OD	Weight	Grade	Conn	DF <sub>min</sub> Collapse	DF <sub>min</sub> Burst	DF <sub>min</sub> Tension
17.5"	0 - 945'	13.375"	54.5#	J55	STC	1.125	1.25	1.60
12.25"	0-4,000'	9.625"	40#	J55	LTC	1.125	1.25	1.60
12.25"	4,000' - 5,150'	9.625"	40#	HCK55	LTC	1.125	1.25	1.60
8.750"	0'-8,200'	7"	26#	HCL80	LTC	1.125	1.25	1.60

**Cement Program:**

Depth	No. Sacks	Wt. ppg	Yld Ft <sup>3</sup> /ft	Slurry Description
945'	300	13.5	1.73	Lead: Class C + 4.0% Bentonite + 0.6% CD-32 + 0.5% CaCl <sub>2</sub> + 0.25 lb/sk Cello-Flake (TOC @ surface)
	200	14.8	1.34	Tail: Class C + 0.005 pps Static Free + 2% CaCl <sub>2</sub> + 0.25 pps CelloFlake + 0.005 gps FP-6L
5,150'	775	12.7	2.22	Class C + 2% SMS + 0.8% R-3 + 0.25 pps CelloFlake + 0.005 pps Static Free (TOC @ surface)
	200	14.8	1.32	Tail: Class 'C' + 0.25 lb/sk Cello Flake + 0.005 lb/sk Static Free
8,200' TOC @ 4650'	350	10.8	3.675	60:40:0 Class 'C' + 15.00 lb/sk BA-90 + 4.00% MPA-5 + 3.00% SMS + 5.00% A-10 + 1.00% BA-10A + 0.80% ASA-301 + 2.50% R-21 + 8.00 lb/sk LCM-1
	300	11.8	2.380	50:50:10 Class 'H' + 0.80% FL-52A + 0.50% ASA-301 + 1.30% SMS + 2.00% Salt (2.224 lb/sk) + 0.70% R-21 + 3.00 lb/sk LCM-1 + 0.25 lb/sk Cello Flake
	200	14.2	1.277	50:50:2 Class 'H' + 0.65% FL-52 + 0.20% CD-32 + 0.15% SMS + 2.00% Salt (0.962 lb/sk) + 0.05% R-3

**Mud Program:**

Depth	Type	Weight (ppg)	Viscosity	Water Loss
0 - 945'	Fresh - Gel	8.6-8.8	28-34	N/c
1235' - 5,150'	Brine	10.0-10.2	28-34	N/c
5,150' - 8,200'	Cut Brine	8.4 - 9.3	28-34	N/c

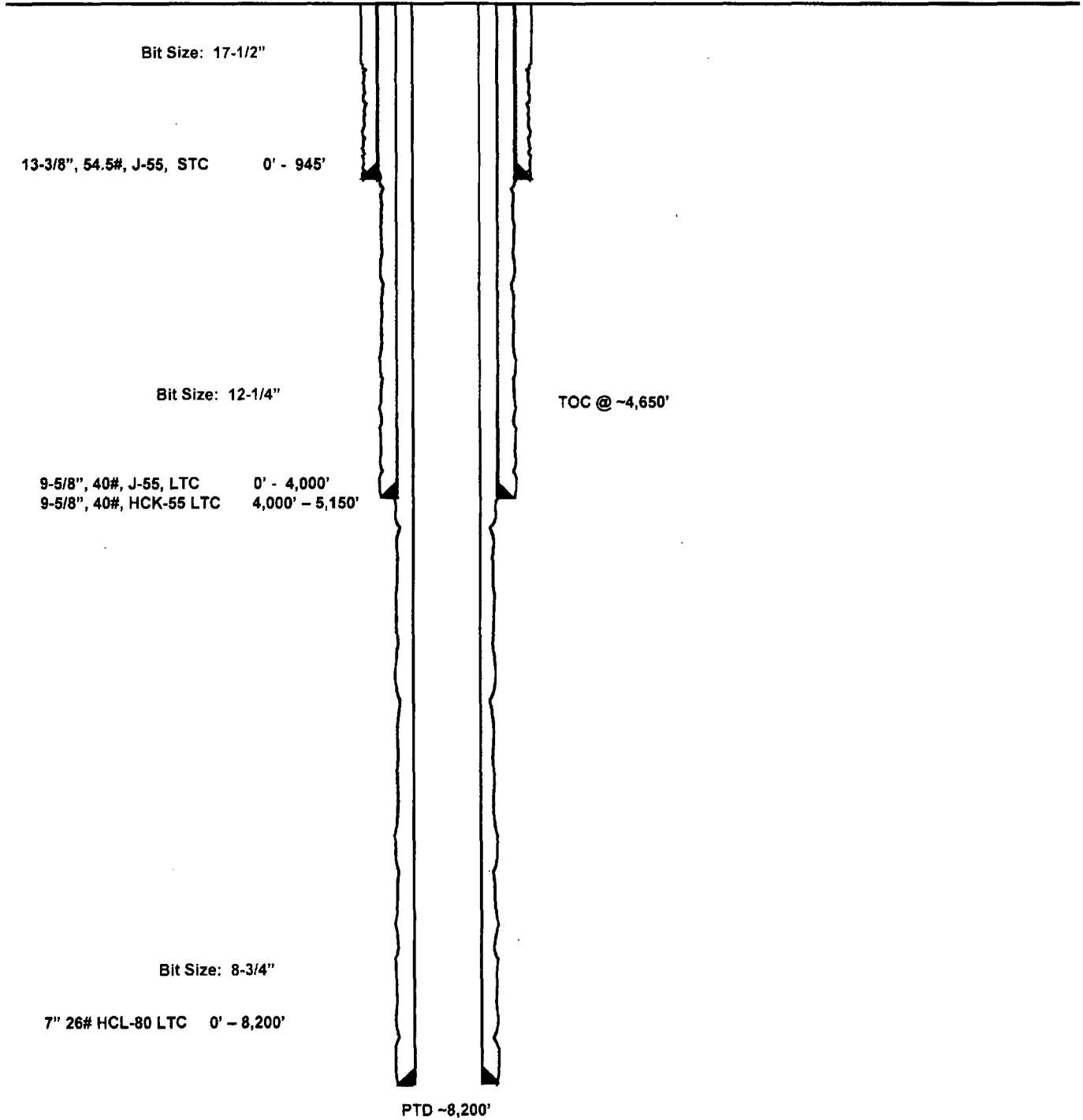
Condor 32 State SWD #1  
Lea County, New Mexico

1823' FNL  
2200' FEL  
Section 32  
T-25-S, R-34-E

Proposed Wellbore

API: 30-025-

KB: 3350'  
GL: 3320'



**EOG RESOURCES, INC.**  
**CONDOR 32 STATE SWD #1**

## **Hydrogen Sulfide Plan Summary**

- A. All personnel shall receive proper H<sub>2</sub>S training in accordance with Onshore Order III.C.3.a.
- B. Briefing Area: two perpendicular areas will be designated by signs and readily accessible.
- C. Required Emergency Equipment:
- Well control equipment
    - a. Flare line 150' from wellhead to be ignited by flare gun.
    - b. Choke manifold with a remotely operated choke.
    - c. Mud/gas separator
  - Protective equipment for essential personnel.

Breathing apparatus:

    - a. Rescue Packs (SCBA) — 1 unit shall be placed at each breathing area, 2 shall be stored in the safety trailer.
    - b. Work/Escape packs —4 packs shall be stored on the rig floor th sufficient air hose not to restrict work activity.
    - c. Emergency Escape Packs —4 packs shall be stored in the doghouse for emergency evacuation.

Auxiliary Rescue Equipment:

    - a. Stretcher
    - b. Two OSHA full body harness
    - c. 100 ft 5/8 inch OSHA approved rope
    - d. 1-20# class ABC fire extinguisher
  - H<sub>2</sub>S detection and monitoring equipment:

The stationary detector with three sensors will be placed in the upper dog house if equipped, set to visually alarm @ 10 ppm and audible @ 14 ppm. Calibrate a minimum of every 30 days or as needed. The sensors will be placed in the following places: Rig floor / Bell nipple / End of flow line or where well bore fluid is being discharged.  
(Gas sample tubes will be stored in the safety trailer)
  - Visual warning systems.
    - a. One color code condition sign will be placed at the entrance to the site reflecting the possible conditions at the site.
    - b. A colored condition flag will be on display, reflecting the current condition at the site at the time.
    - c. Two wind socks will be placed in strategic locations, visible from all angles.

**EOG RESOURCES, INC.**  
**CONDOR 32 STATE SWD #1**

- **Mud program:**  
The mud program has been designed to minimize the volume of H<sub>2</sub>S circulated to surface. The operator will have the necessary mud products to minimize hazards while drilling in H<sub>2</sub>S bearing zones.
  
- **Metallurgy:**  
All drill strings, casings, tubing, wellhead, blowout preventer, drilling spool, kill lines, choke manifold and lines, and valves shall be suitable for H<sub>2</sub>S service.
  
- **Communication:**  
Communication will be via cell phones and land lines where available.

**EOG RESOURCES, INC.  
CONDOR 32 STATE SWD #1**

**Emergency Assistance Telephone List**

<b>PUBLIC SAFETY:</b>	<b>911 or</b>
Lea County Sheriff's Department	(575) 396-3611
Rod Coffman	
Fire Department:	
Carlsbad	(575) 885-3125
Artesia	(575) 746-5050
Hospitals:	
Carlsbad	(575) 887-4121
Artesia	(575) 748-3333
Hobbs	(575) 392-1979
Dept. of Public Safety/Carlsbad	(575) 748-9718
Highway Department	(575) 885-3281
New Mexico Oil Conservation	(575) 476-3440
U.S. Dept. of Labor	(575) 887-1174
 <b>EOG Resources, Inc.</b>	
EOG / Midland	Office (432) 686-3600
 <b>Company Drilling Consultants:</b>	
Danny Kiser Will Henderson	Cell (432) 894-3417
Larry King	
 <b>Drilling Engineer</b>	
Robert Brosig	Office (432) 686-3737
	Cell (432) 770-0705
 <b>Drilling Manager</b>	
Lee Lohoefer	Office (432) 686-3716
	Cell (432) 557-3727
 <b>Drilling Superintendent</b>	
Ron Welch	Office (432) 686-3695
	Cell (432) 386-0592
 <b>Cactus Drilling</b>	
Cactus Drilling	Office (580) 799-2752
Cactus 123 Drilling Rig	Rig (432) 894-3417
 <b>Tool Pusher:</b>	
Jack Herndon	Cell (405) 519-6552
Larry Slife	Cell (405) 250-6368
 <b>Safety</b>	
Reggie Phillips (HSE Manager)	Office (432) 686-3747
	Cell (432) 250-7507