



HOBBS OCD
JAN 25 2016
RECEIVED

COG Operating LLC

Lea County, NM
Airbonita 12 Federal Com
#10H

OH

Plan: Plan #1

Standard Planning Report

08 March, 2015



JAN 27 2016



TDS
Planning Report



Database:	EDM 5000.1 Single User Db	Local Co-ordinate Reference:	Well #10H
Company:	COG Operating, LLC	TVD Reference:	KB @ 3671.5usft
Project:	Lea County, NM	MD Reference:	KB @ 3671.5usft
Site:	Airbonita 12 Federal Com	North Reference:	Grid
Well:	#10H	Survey Calculation Method:	Minimum Curvature
Wellbore:	OH		
Design:	Plan #1		

Project	Lea County, NM		
Map System:	US State Plane 1927 (Exact solution)	System Datum:	Mean Sea Level
Geo Datum:	NAD 1927 (NADCON CONUS)		
Map Zone:	New Mexico East 3001		

Site	Airbonita 12 Federal Com				
Site Position:	From: Map	Northing:	509,773.30 usft	Latitude:	32° 23' 58.202 N
		Easting:	718,065.70 usft	Longitude:	103° 37' 36.519 W
Position Uncertainty:	0.0 usft	Slot Radius:	13-3/16 "	Grid Convergence:	0.38 °

Well	#10H					
Well Position	+N/-S	-0.4 usft	Northing:	509,772.90 usft	Latitude:	32° 23' 58.200 N
	+E/-W	-30.1 usft	Easting:	718,035.60 usft	Longitude:	103° 37' 36.870 W
Position Uncertainty	0.0 usft	Wellhead Elevation:	0.0 usft	Ground Level:	3,640.4 usft	

Wellbore	OH				
Magnetics	Model Name	Sample Date	Declination (°)	Dip Angle (°)	Field Strength (nT)
	IGRF2010	3/7/2015	7.16	60.25	48,341

Design	Plan #1				
Audit Notes:					
Version:	Phase:	PLAN	Tie On Depth:	0.0	
Vertical Section:	Depth From (TVD) (usft)	+N/-S (usft)	+E/-W (usft)	Direction (°)	
	0.0	0.0	0.0	3.92	

Plan Sections										
Measured Depth (usft)	Inclination (°)	Azimuth (°)	Vertical Depth (usft)	+N/-S (usft)	+E/-W (usft)	Dogleg Rate (°/100usft)	Build Rate (°/100usft)	Turn Rate (°/100usft)	TFO (°)	Target
0.0	0.00	0.00	0.0	0.0	0.0	0.00	0.00	0.00	0.00	
10,362.5	0.00	0.00	10,362.5	0.0	0.0	0.00	0.00	0.00	0.00	
11,111.9	89.93	3.92	10,840.0	475.8	32.6	12.00	12.00	0.52	3.92	
15,406.4	89.93	3.92	10,845.0	4,760.2	326.1	0.00	0.00	0.00	0.00	PBHL (A12FC #10H/C)



TDS
Planning Report



Database:	EDM5000.1 Single User Db	Local Co-ordinate Reference:	Well #10H
Company:	COG Operating LLC	TVD Reference:	KB @ 3671.5usft
Project:	Lea County, NM	MD Reference:	KB @ 3671.5usft
Site:	Airbonita 12 Federal Com	North Reference:	Grid:
Well:	#10H	Survey Calculation Method:	Minimum Curvature
Wellbore:	OH		
Design:	Plan #1		

Planned Survey									
Measured Depth (usft)	Inclination (°)	Azimuth (°)	Vertical Depth (usft)	+N/-S (usft)	+E/-W (usft)	Vertical Section (usft)	Dogleg Rate (°/100usft)	Build Rate (°/100usft)	Turn Rate (°/100usft)
0.0	0.00	0.00	0.0	0.0	0.0	0.0	0.00	0.00	0.00
100.0	0.00	0.00	100.0	0.0	0.0	0.0	0.00	0.00	0.00
200.0	0.00	0.00	200.0	0.0	0.0	0.0	0.00	0.00	0.00
300.0	0.00	0.00	300.0	0.0	0.0	0.0	0.00	0.00	0.00
400.0	0.00	0.00	400.0	0.0	0.0	0.0	0.00	0.00	0.00
500.0	0.00	0.00	500.0	0.0	0.0	0.0	0.00	0.00	0.00
600.0	0.00	0.00	600.0	0.0	0.0	0.0	0.00	0.00	0.00
700.0	0.00	0.00	700.0	0.0	0.0	0.0	0.00	0.00	0.00
800.0	0.00	0.00	800.0	0.0	0.0	0.0	0.00	0.00	0.00
900.0	0.00	0.00	900.0	0.0	0.0	0.0	0.00	0.00	0.00
1,000.0	0.00	0.00	1,000.0	0.0	0.0	0.0	0.00	0.00	0.00
1,100.0	0.00	0.00	1,100.0	0.0	0.0	0.0	0.00	0.00	0.00
1,200.0	0.00	0.00	1,200.0	0.0	0.0	0.0	0.00	0.00	0.00
1,300.0	0.00	0.00	1,300.0	0.0	0.0	0.0	0.00	0.00	0.00
1,400.0	0.00	0.00	1,400.0	0.0	0.0	0.0	0.00	0.00	0.00
1,500.0	0.00	0.00	1,500.0	0.0	0.0	0.0	0.00	0.00	0.00
1,600.0	0.00	0.00	1,600.0	0.0	0.0	0.0	0.00	0.00	0.00
1,700.0	0.00	0.00	1,700.0	0.0	0.0	0.0	0.00	0.00	0.00
1,800.0	0.00	0.00	1,800.0	0.0	0.0	0.0	0.00	0.00	0.00
1,900.0	0.00	0.00	1,900.0	0.0	0.0	0.0	0.00	0.00	0.00
2,000.0	0.00	0.00	2,000.0	0.0	0.0	0.0	0.00	0.00	0.00
2,100.0	0.00	0.00	2,100.0	0.0	0.0	0.0	0.00	0.00	0.00
2,200.0	0.00	0.00	2,200.0	0.0	0.0	0.0	0.00	0.00	0.00
2,300.0	0.00	0.00	2,300.0	0.0	0.0	0.0	0.00	0.00	0.00
2,400.0	0.00	0.00	2,400.0	0.0	0.0	0.0	0.00	0.00	0.00
2,500.0	0.00	0.00	2,500.0	0.0	0.0	0.0	0.00	0.00	0.00
2,600.0	0.00	0.00	2,600.0	0.0	0.0	0.0	0.00	0.00	0.00
2,700.0	0.00	0.00	2,700.0	0.0	0.0	0.0	0.00	0.00	0.00
2,800.0	0.00	0.00	2,800.0	0.0	0.0	0.0	0.00	0.00	0.00
2,900.0	0.00	0.00	2,900.0	0.0	0.0	0.0	0.00	0.00	0.00
3,000.0	0.00	0.00	3,000.0	0.0	0.0	0.0	0.00	0.00	0.00
3,100.0	0.00	0.00	3,100.0	0.0	0.0	0.0	0.00	0.00	0.00
3,200.0	0.00	0.00	3,200.0	0.0	0.0	0.0	0.00	0.00	0.00
3,300.0	0.00	0.00	3,300.0	0.0	0.0	0.0	0.00	0.00	0.00
3,400.0	0.00	0.00	3,400.0	0.0	0.0	0.0	0.00	0.00	0.00
3,500.0	0.00	0.00	3,500.0	0.0	0.0	0.0	0.00	0.00	0.00
3,600.0	0.00	0.00	3,600.0	0.0	0.0	0.0	0.00	0.00	0.00
3,700.0	0.00	0.00	3,700.0	0.0	0.0	0.0	0.00	0.00	0.00
3,800.0	0.00	0.00	3,800.0	0.0	0.0	0.0	0.00	0.00	0.00
3,900.0	0.00	0.00	3,900.0	0.0	0.0	0.0	0.00	0.00	0.00
4,000.0	0.00	0.00	4,000.0	0.0	0.0	0.0	0.00	0.00	0.00
4,100.0	0.00	0.00	4,100.0	0.0	0.0	0.0	0.00	0.00	0.00
4,200.0	0.00	0.00	4,200.0	0.0	0.0	0.0	0.00	0.00	0.00
4,300.0	0.00	0.00	4,300.0	0.0	0.0	0.0	0.00	0.00	0.00
4,400.0	0.00	0.00	4,400.0	0.0	0.0	0.0	0.00	0.00	0.00
4,500.0	0.00	0.00	4,500.0	0.0	0.0	0.0	0.00	0.00	0.00
4,600.0	0.00	0.00	4,600.0	0.0	0.0	0.0	0.00	0.00	0.00
4,700.0	0.00	0.00	4,700.0	0.0	0.0	0.0	0.00	0.00	0.00
4,800.0	0.00	0.00	4,800.0	0.0	0.0	0.0	0.00	0.00	0.00
4,900.0	0.00	0.00	4,900.0	0.0	0.0	0.0	0.00	0.00	0.00
5,000.0	0.00	0.00	5,000.0	0.0	0.0	0.0	0.00	0.00	0.00
5,100.0	0.00	0.00	5,100.0	0.0	0.0	0.0	0.00	0.00	0.00
5,200.0	0.00	0.00	5,200.0	0.0	0.0	0.0	0.00	0.00	0.00
5,300.0	0.00	0.00	5,300.0	0.0	0.0	0.0	0.00	0.00	0.00



Database:	EDM 5000.1 Single User Db	Local Co-ordinate Reference:	Well #10H
Company:	COG Operating LLC	TVD Reference:	KB @ 367.1 5usft
Project:	Lea County, NM	MD Reference:	KB @ 367.1 5usft
Site:	Airbonita 12 Federal Com	North Reference:	Grid
Well:	#10H	Survey Calculation Method:	Minimum Curvature
Wellbore:	OH		
Design:	Plan #1		

Planned Survey									
Measured Depth (usft)	Inclination (°)	Azimuth (°)	Vertical Depth (usft)	+N-S (usft)	+E-W (usft)	Vertical Section (usft)	Dogleg Rate (°/100usft)	Build Rate (°/100usft)	Turn Rate (°/100usft)
5,400.0	0.00	0.00	5,400.0	0.0	0.0	0.0	0.00	0.00	0.00
5,500.0	0.00	0.00	5,500.0	0.0	0.0	0.0	0.00	0.00	0.00
5,600.0	0.00	0.00	5,600.0	0.0	0.0	0.0	0.00	0.00	0.00
5,700.0	0.00	0.00	5,700.0	0.0	0.0	0.0	0.00	0.00	0.00
5,800.0	0.00	0.00	5,800.0	0.0	0.0	0.0	0.00	0.00	0.00
5,900.0	0.00	0.00	5,900.0	0.0	0.0	0.0	0.00	0.00	0.00
6,000.0	0.00	0.00	6,000.0	0.0	0.0	0.0	0.00	0.00	0.00
6,100.0	0.00	0.00	6,100.0	0.0	0.0	0.0	0.00	0.00	0.00
6,200.0	0.00	0.00	6,200.0	0.0	0.0	0.0	0.00	0.00	0.00
6,300.0	0.00	0.00	6,300.0	0.0	0.0	0.0	0.00	0.00	0.00
6,400.0	0.00	0.00	6,400.0	0.0	0.0	0.0	0.00	0.00	0.00
6,500.0	0.00	0.00	6,500.0	0.0	0.0	0.0	0.00	0.00	0.00
6,600.0	0.00	0.00	6,600.0	0.0	0.0	0.0	0.00	0.00	0.00
6,700.0	0.00	0.00	6,700.0	0.0	0.0	0.0	0.00	0.00	0.00
6,800.0	0.00	0.00	6,800.0	0.0	0.0	0.0	0.00	0.00	0.00
6,900.0	0.00	0.00	6,900.0	0.0	0.0	0.0	0.00	0.00	0.00
7,000.0	0.00	0.00	7,000.0	0.0	0.0	0.0	0.00	0.00	0.00
7,100.0	0.00	0.00	7,100.0	0.0	0.0	0.0	0.00	0.00	0.00
7,200.0	0.00	0.00	7,200.0	0.0	0.0	0.0	0.00	0.00	0.00
7,300.0	0.00	0.00	7,300.0	0.0	0.0	0.0	0.00	0.00	0.00
7,400.0	0.00	0.00	7,400.0	0.0	0.0	0.0	0.00	0.00	0.00
7,500.0	0.00	0.00	7,500.0	0.0	0.0	0.0	0.00	0.00	0.00
7,600.0	0.00	0.00	7,600.0	0.0	0.0	0.0	0.00	0.00	0.00
7,700.0	0.00	0.00	7,700.0	0.0	0.0	0.0	0.00	0.00	0.00
7,800.0	0.00	0.00	7,800.0	0.0	0.0	0.0	0.00	0.00	0.00
7,900.0	0.00	0.00	7,900.0	0.0	0.0	0.0	0.00	0.00	0.00
8,000.0	0.00	0.00	8,000.0	0.0	0.0	0.0	0.00	0.00	0.00
8,100.0	0.00	0.00	8,100.0	0.0	0.0	0.0	0.00	0.00	0.00
8,200.0	0.00	0.00	8,200.0	0.0	0.0	0.0	0.00	0.00	0.00
8,300.0	0.00	0.00	8,300.0	0.0	0.0	0.0	0.00	0.00	0.00
8,400.0	0.00	0.00	8,400.0	0.0	0.0	0.0	0.00	0.00	0.00
8,500.0	0.00	0.00	8,500.0	0.0	0.0	0.0	0.00	0.00	0.00
8,600.0	0.00	0.00	8,600.0	0.0	0.0	0.0	0.00	0.00	0.00
8,700.0	0.00	0.00	8,700.0	0.0	0.0	0.0	0.00	0.00	0.00
8,800.0	0.00	0.00	8,800.0	0.0	0.0	0.0	0.00	0.00	0.00
8,900.0	0.00	0.00	8,900.0	0.0	0.0	0.0	0.00	0.00	0.00
9,000.0	0.00	0.00	9,000.0	0.0	0.0	0.0	0.00	0.00	0.00
9,100.0	0.00	0.00	9,100.0	0.0	0.0	0.0	0.00	0.00	0.00
9,200.0	0.00	0.00	9,200.0	0.0	0.0	0.0	0.00	0.00	0.00
9,300.0	0.00	0.00	9,300.0	0.0	0.0	0.0	0.00	0.00	0.00
9,400.0	0.00	0.00	9,400.0	0.0	0.0	0.0	0.00	0.00	0.00
9,500.0	0.00	0.00	9,500.0	0.0	0.0	0.0	0.00	0.00	0.00
9,600.0	0.00	0.00	9,600.0	0.0	0.0	0.0	0.00	0.00	0.00
9,700.0	0.00	0.00	9,700.0	0.0	0.0	0.0	0.00	0.00	0.00
9,800.0	0.00	0.00	9,800.0	0.0	0.0	0.0	0.00	0.00	0.00
9,900.0	0.00	0.00	9,900.0	0.0	0.0	0.0	0.00	0.00	0.00
10,000.0	0.00	0.00	10,000.0	0.0	0.0	0.0	0.00	0.00	0.00
10,100.0	0.00	0.00	10,100.0	0.0	0.0	0.0	0.00	0.00	0.00
10,200.0	0.00	0.00	10,200.0	0.0	0.0	0.0	0.00	0.00	0.00
10,300.0	0.00	0.00	10,300.0	0.0	0.0	0.0	0.00	0.00	0.00
10,362.5	0.00	0.00	10,362.5	0.0	0.0	0.0	0.00	0.00	0.00
KOP - Start DLS 12.00 TFO 3.92									
10,375.0	1.50	3.92	10,375.0	0.2	0.0	0.2	12.00	12.00	0.00



TDS
Planning Report



Table with 4 columns: Database/Company/Project/Site/Well/Wellbore/Design, EDM 5000.1-Single User Db/COG Operating LLC/Lea County, NM/Airbonita 12 Federal Com/#10H/OH/Plan.#1, Local Co-ordinate Reference: TVD Reference: MD Reference: North Reference: Survey Calculation Method:, Well #10H KB @ 3671.5usft KB @ 3671.5usft Grid: Minimum Curvature

Planned Survey

Main data table with 10 columns: Measured Depth (usft), Inclination (°), Azimuth (°), Vertical Depth (usft), +N/S (usft), +E/W (usft), Vertical Section (usft), Dogleg Rate (°/100usft), Build Rate (°/100usft), Turn Rate (°/100usft). Rows include depth measurements from 10,400.0 to 13,400.0.

EOC - Start 4294.5 hold at 11111.9 MD



TDS
Planning Report



Database:	EDM 5000.1 Single User Db	Local Co-ordinate Reference:	Well #10H
Company:	COG Operating LLC	TVD Reference:	KB @ 3671.5usft
Project:	Lea County, NM	MD Reference:	KB @ 3671.5usft
Site:	Airbonita 12 Federal Com	North Reference:	Grid
Well:	#10H	Survey Calculation Method:	Minimum Curvature
Wellbore:	OH		
Design:	Plan #1		

Planned Survey										
Measured Depth (usft)	Inclination (°)	Azimuth (°)	Vertical Depth (usft)	+N/-S (usft)	+E/-W (usft)	Vertical Section (usft)	Dogleg Rate (°/100usft)	Build Rate (°/100usft)	Turn Rate (°/100usft)	
13,500.0	89.93	3.92	10,842.8	2,858.3	195.8	2,865.0	0.00	0.00	0.00	
13,600.0	89.93	3.92	10,842.9	2,958.0	202.6	2,965.0	0.00	0.00	0.00	
13,700.0	89.93	3.92	10,843.0	3,057.8	209.5	3,065.0	0.00	0.00	0.00	
13,800.0	89.93	3.92	10,843.1	3,157.6	216.3	3,165.0	0.00	0.00	0.00	
13,900.0	89.93	3.92	10,843.2	3,257.3	223.1	3,265.0	0.00	0.00	0.00	
14,000.0	89.93	3.92	10,843.4	3,357.1	230.0	3,365.0	0.00	0.00	0.00	
14,100.0	89.93	3.92	10,843.5	3,456.9	236.8	3,465.0	0.00	0.00	0.00	
14,200.0	89.93	3.92	10,843.6	3,556.6	243.6	3,565.0	0.00	0.00	0.00	
14,300.0	89.93	3.92	10,843.7	3,656.4	250.5	3,665.0	0.00	0.00	0.00	
14,400.0	89.93	3.92	10,843.8	3,756.2	257.3	3,765.0	0.00	0.00	0.00	
14,500.0	89.93	3.92	10,843.9	3,855.9	264.2	3,865.0	0.00	0.00	0.00	
14,600.0	89.93	3.92	10,844.1	3,955.7	271.0	3,965.0	0.00	0.00	0.00	
14,700.0	89.93	3.92	10,844.2	4,055.5	277.8	4,065.0	0.00	0.00	0.00	
14,800.0	89.93	3.92	10,844.3	4,155.2	284.7	4,165.0	0.00	0.00	0.00	
14,900.0	89.93	3.92	10,844.4	4,255.0	291.5	4,265.0	0.00	0.00	0.00	
15,000.0	89.93	3.92	10,844.5	4,354.8	298.3	4,365.0	0.00	0.00	0.00	
15,100.0	89.93	3.92	10,844.6	4,454.5	305.2	4,465.0	0.00	0.00	0.00	
15,200.0	89.93	3.92	10,844.8	4,554.3	312.0	4,565.0	0.00	0.00	0.00	
15,300.0	89.93	3.92	10,844.9	4,654.1	318.8	4,665.0	0.00	0.00	0.00	
15,406.4	89.93	3.92	10,845.0	4,760.2	326.1	4,771.4	0.00	0.00	0.00	
TD at 15406.4										

Design Targets										
Target Name	Dip Angle (°)	Dip Dir. (°)	TVD (usft)	+N/-S (usft)	+E/-W (usft)	Northing (usft)	Easting (usft)	Latitude	Longitude	
EOC (A12FC #10H/OH I; - plan hits target center - Point	0.00	0.00	10,840.0	475.7	32.6	510,248.65	718,068.19	32° 24' 2.906 N	103° 37' 36.453 W	
PBHL (A12FC #10H/OH - plan hits target center - Point	0.00	0.01	10,845.0	4,760.2	326.1	514,533.10	718,361.70	32° 24' 45.283 N	103° 37' 32.699 W	

Plan Annotations					
Measured Depth (usft)	Vertical Depth (usft)	Local Coordinates		Comment	
		+N/-S (usft)	+E/-W (usft)		
10,362.5	10,362.5	0.0	0.0	KOP - Start DLS 12.00 TFO 3.92	
11,111.9	10,840.0	475.8	32.6	EOC - Start 4294.5 hold at 11111.9 MD	
15,406.4	10,845.0	4,760.2	326.1	TD at 15406.4	



COG Operating LLC
 Project: Lea County, NM
 Site: Airbonita 12 Federal Com
 Well: #10H

Wellbore: OH
 Plan: Plan #1 (#10H/OH)

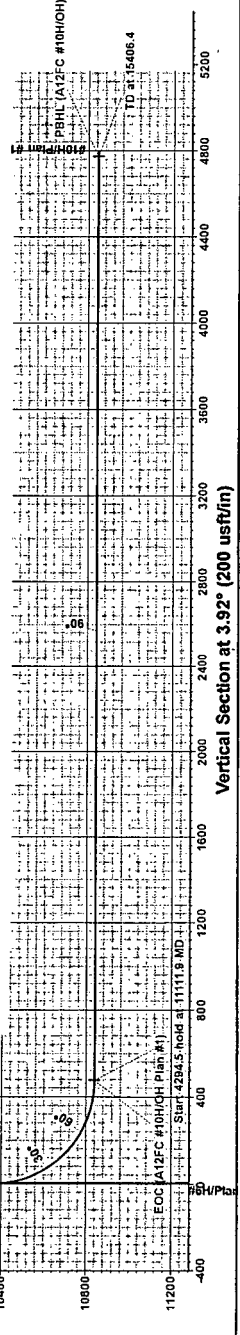
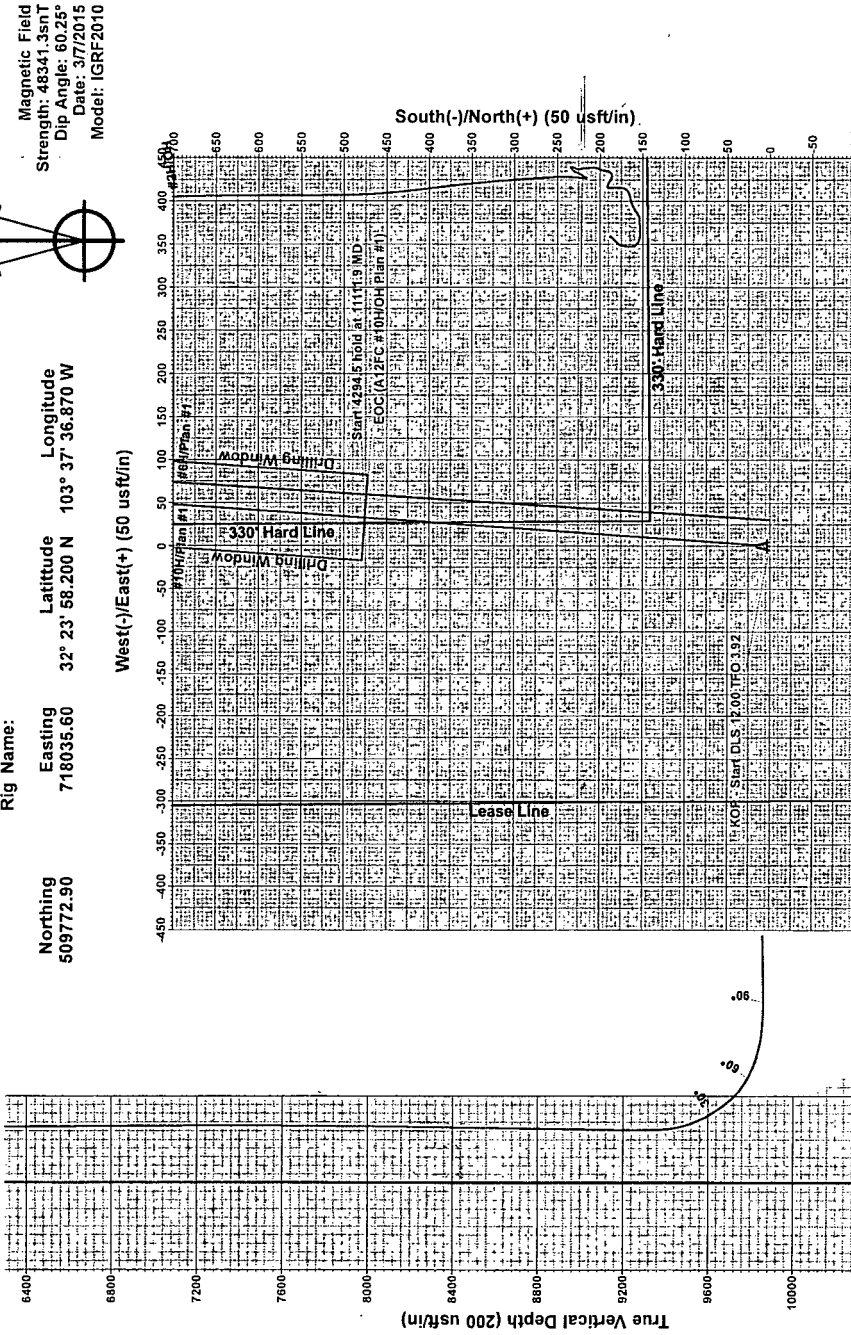
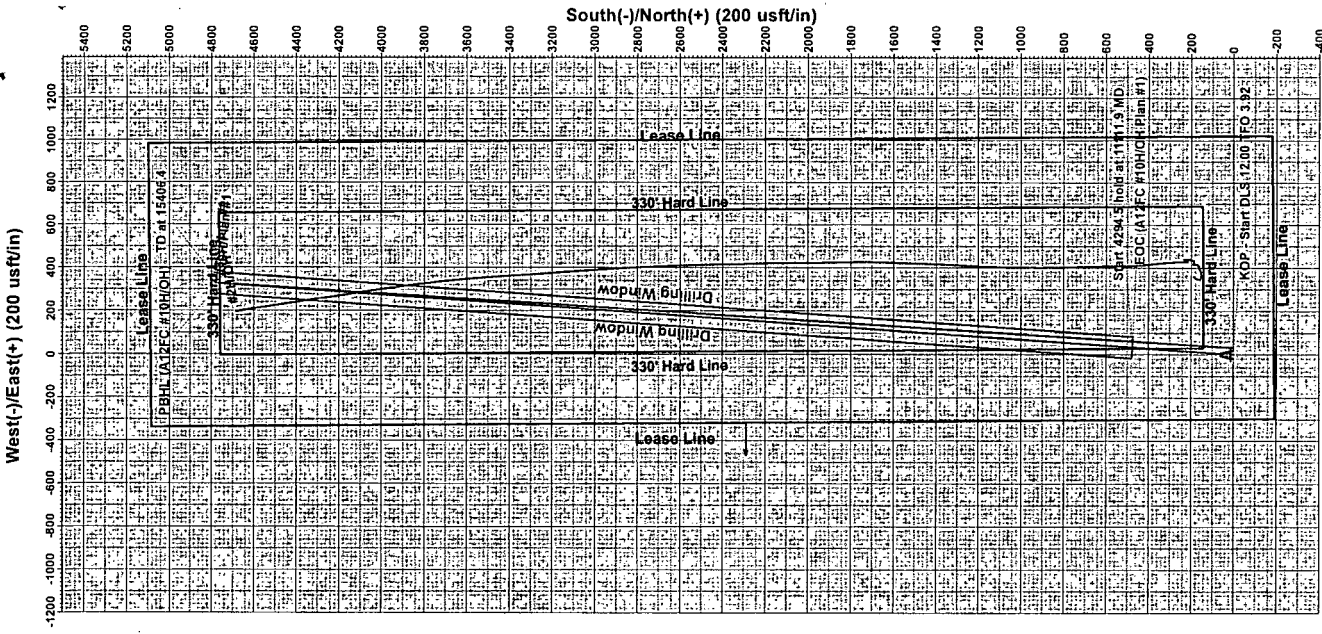
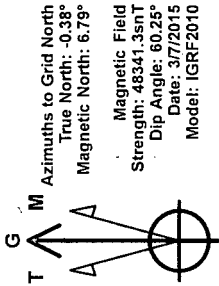
Section Details

Sec	MID	Inc	Azi	TVD	+N/-S	+E/-W	Dleg	TFace	Vsect	Target
1	0.0	0.00	0.00	0.00	0.0	0.0	0.00	0.00	0.0	0.0
2	10362.5	0.00	0.00	10362.5	0.0	0.0	0.00	0.00	0.0	0.0
3	11111.9	89.93	3.92	10840.0	475.8	32.6	12.00	3.92	476.9	
4	15406.4	89.93	3.92	10845.0	4760.2	326.1	0.00	0.00	4771.4	PBHL (A12FC #10H/OH)

WELL DETAILS: #10H

Ground Elevation: 3640.4
 RKB Elevation: KB @ 3671.5usft
 Rig Name:

Northing: 509772.90
 Easting: 718035.60
 Latitude: 32° 23' 58.200 N
 Longitude: 103° 37' 36.870 W

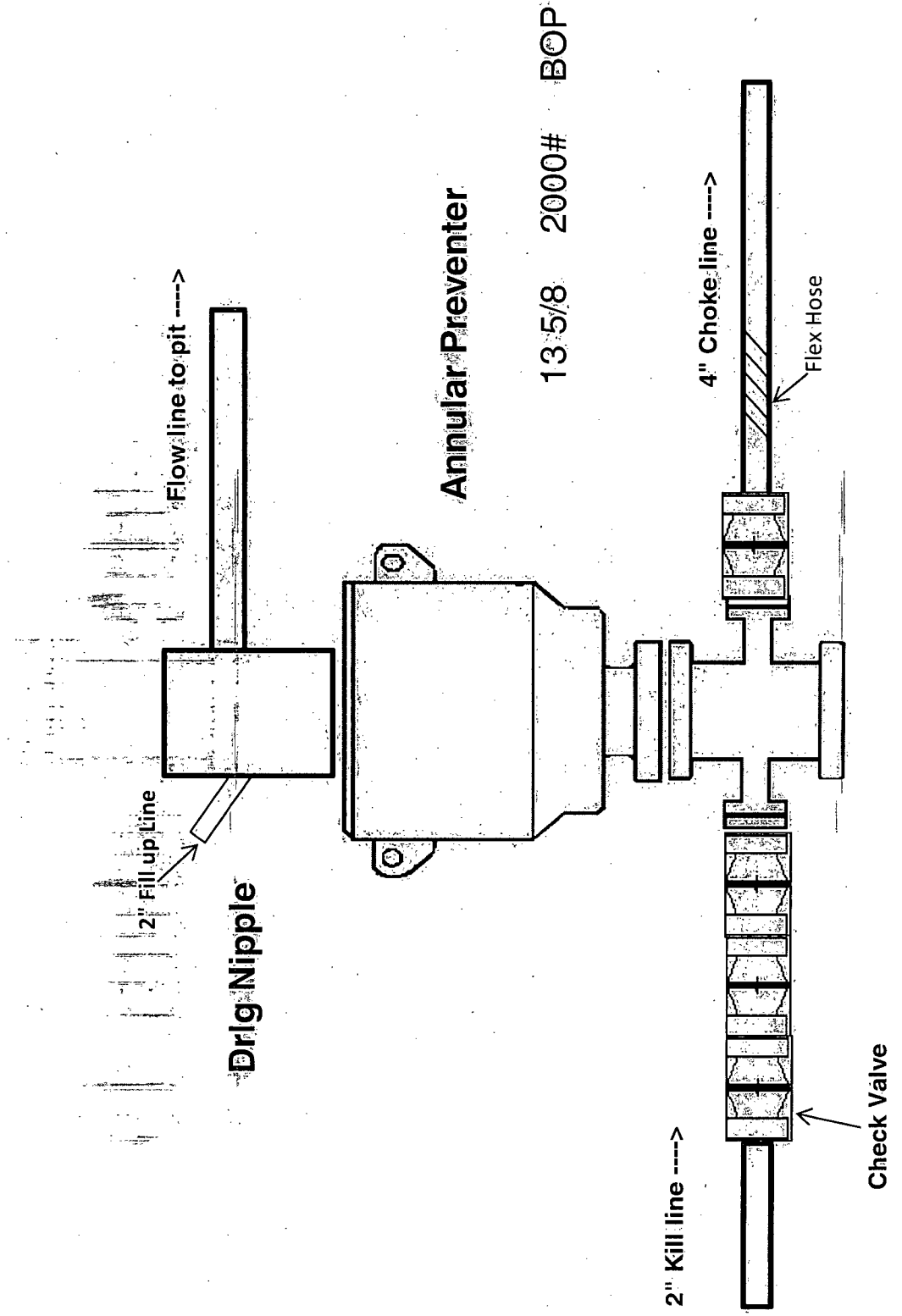


PROJECT DETAILS: Lea County, NM
 Geodetic System: US State Plane 1927 (Exact solution)
 Datum: NAD 1927 (NADCON CONUS)
 Ellipsoid: Clarke 1866
 Zone: New Mexico East 3001
 System Datum: Mean Sea Level
 Local North: Grid

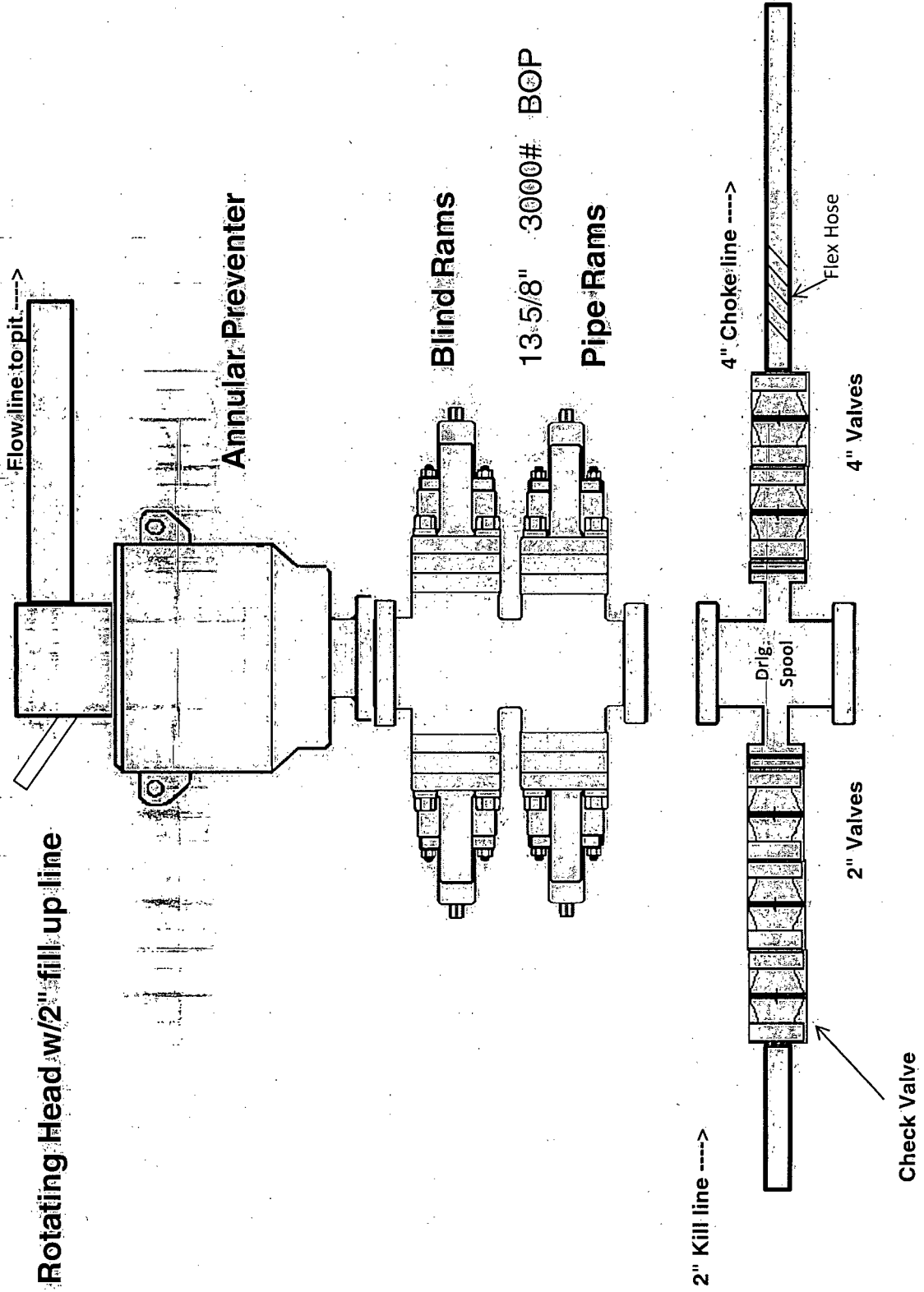
Terra Directional Services LLC
 322 Spring Hill Drive, Suite A300, Spring, Tx 77386
 Phone: 432-425-7532



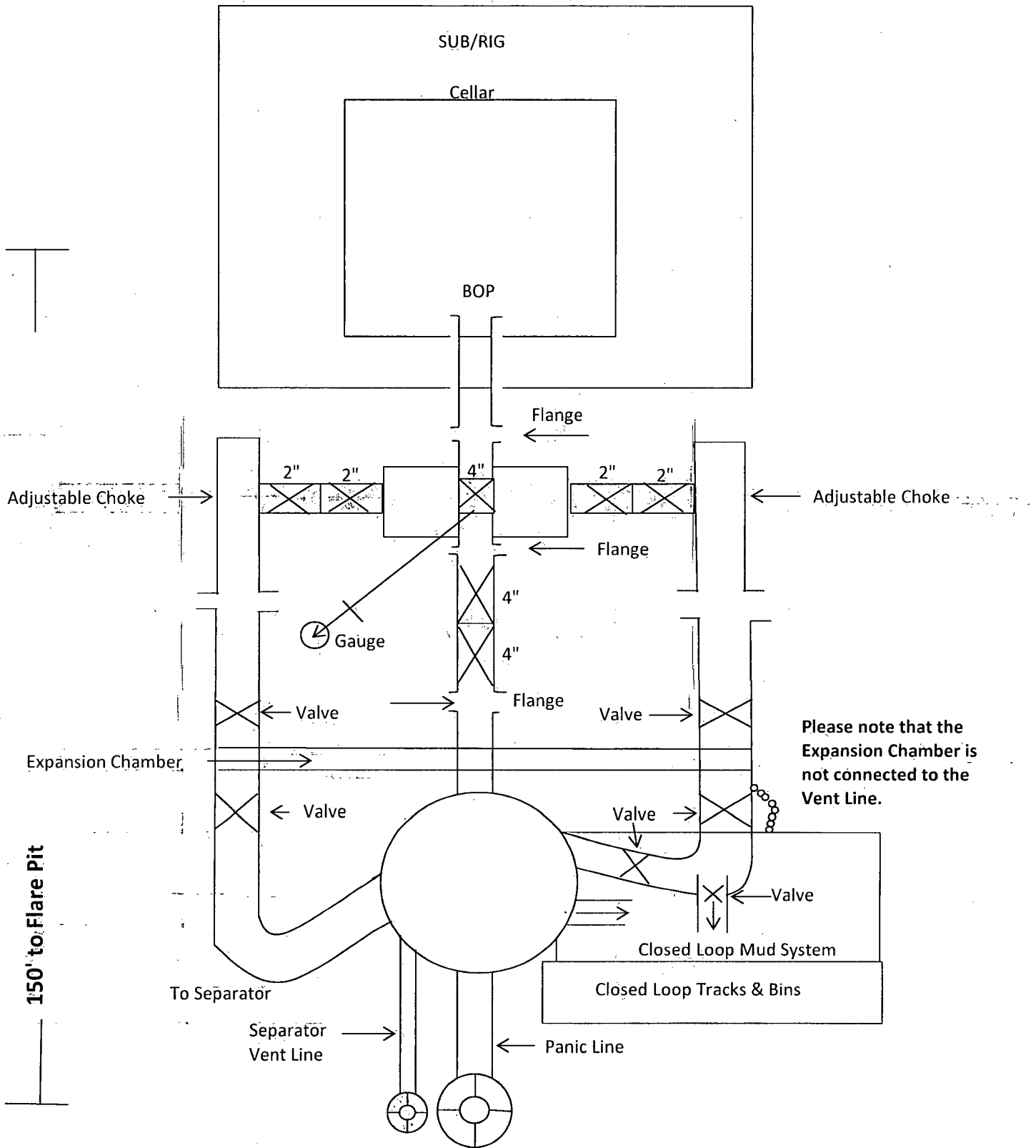
2,000 psi BOP Schematic



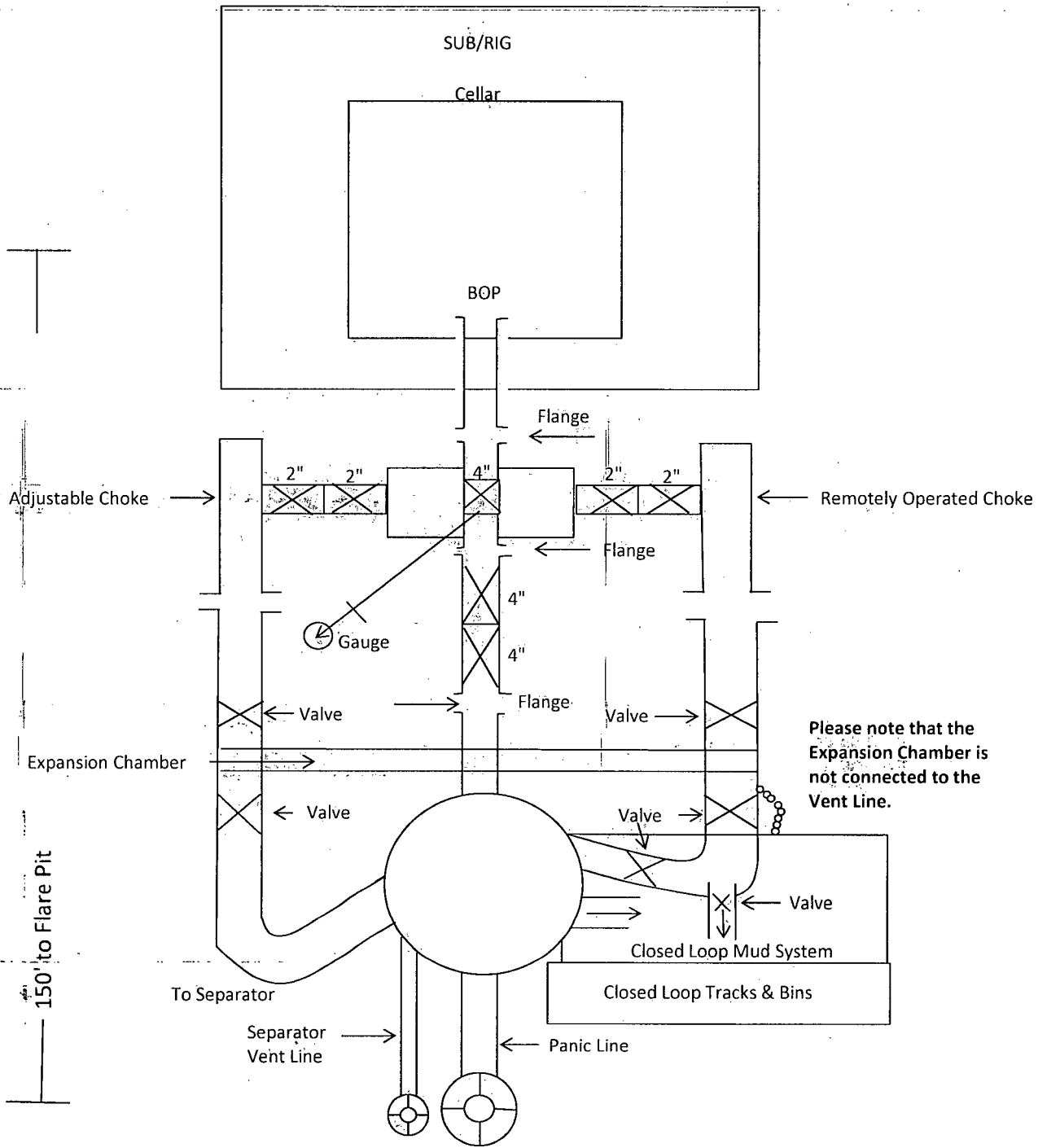
3,000 psi BOP Schematic



2M Choke Manifold Equipment



3M Choke Manifold Equipment



COG Operating LLC

Rig Plat & Closed Loop Equipment Diagram

Well pad will be 400' X 340'
with cellar in center of pad

Flare Lines will be from both Choke
Manifold & Separator to edge of
location.

NORTH
↑

170'

170'

170'

200'

Fluid
Storage
Tanks

Roll Off Cutting
Containers on
Tracks

Mud Pumps

Water Tanks

Centrifuge or
Solids Sep.

Shakers

Flow line →

Steel pits

Transfer Pump

Drig Separator

Choke
Manifold

Cellar

Pipe
Racks

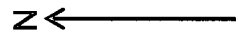
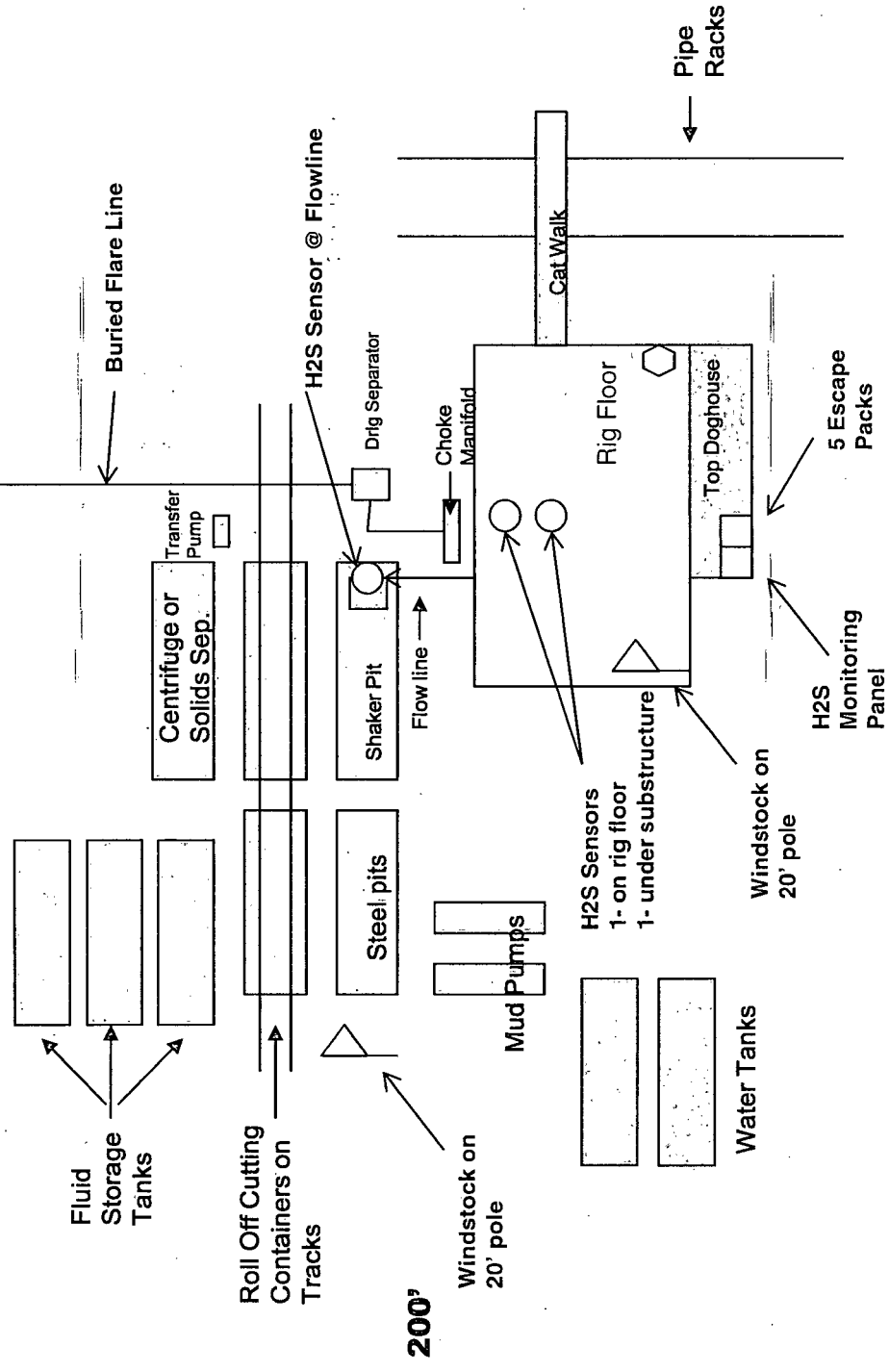
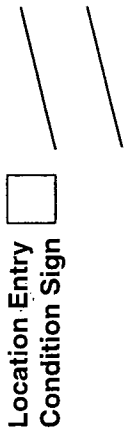
Trailer

"I further certify that COG will comply with Rule 19.15.17
NMAC by using a Closed Loop System."

Exhibit 1

COG Operating LLC
 H₂S Equipment Schematic
 Terrain: Shinnery sand hills.

Well pad will be 370' X 340'
 with cellar in center of pad



170'

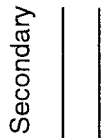
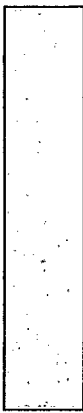


Prevailing Wind
 Direction in SENM

170'

Secondary egress.



Company Representative's Trailer





TECHNIP Umbilicals Inc.
COFLEXIP® Products Division

CERTIFICATE OF CONFORMITY

SUPPLIER	COFLEXIP® Products Division 16661 Jacintoport Blvd. Houston, Texas 77015	
CUSTOMER	OFS CANADA INC	
CUSTOMER PROJECT	OFS GLOBAL RIG 772 PROJECT 59	
CONTRACT NUMBER	OFS-012060-1	
COFLEXIP REFERENCE NUMBER	K12386	
COFLEXIP LINE DESCRIPTION	3" x 30' 10K CHOKE/KILL LINE	
COFLEXIP LINE SERIAL NUMBER	K12386-202	
WORKING / TEST PRESSURE (PSI)	10000 / 15000	
COFLEXIP ID (inches)/PART NUMBER	3 / 076 60414 13 13	
COFLEXIP STRUCTURE NUMBER	076 60414	
END FITTING REFERENCE NUMBER	EM 076 65000 13	EM 076 65000 13
END FITTING DESCRIPTION	4 1/16" 10K FLG BX 155 INC. 625 RG / 4 1/16" 10K FLG BX 155 INC. 625 RG	
IRC REFERENCE		
SAFE WORKING LOADS		
NOMINAL DAMAGING PULL (STRAIGHT LINE)		
MINIMUM BENDING RADIUS		
MAXIMUM DESIGN TEMPERATURE	-4 Deg. F To 212 Deg. F/B	
<p><i>We certify that the supply detailed above was manufactured and inspected in accordance with the technical specifications specified within the contract referenced above and any specifications checked below. This document serves as a Declaration and Confirmation from the Manufacturer, TECHNIP Umbilicals Inc., Houston, Texas, that asbestos materials are not utilized in any part(s) or sub-part(s) or component(s) during the assembly process of any of our Coflexip® flexible pipes.</i></p>		
Licence Number	16C-0001	(If Required)
TECHNIP QUALITY CONTROL		
		
Name/ Date/ Stamp		

Technip

TECHNIP Umbilicals Inc.
COFLEXIP® Products Division

Quality Control Department

Control Report Dated 4/28/2015

COFLEXIP FLEXIBLE PIPE TEST CERTIFICATE

Customer: OFS/CANADA INC Job Number: K12387
Address: Line Serial Number: K12387-202
Part Number: 076:60414:13 13

Application: 3" x 30' 10K CHOKE/KILL LINE

COFLEXIP certifies that the results of the test and controls performed on the above mentioned flexible pipe is as follows:

Internal Diameter	3	inches
Length	30.83	feet
Working Pressure	10000	psi
Test Pressure:	15000	psi
As per attached recorder chart	24	hours
Test Duration		

[Handwritten Signature]
Technip

THIRD PARTY INSPECTION FIRM OR CUSTOMER REPRESENTATIVE

TECHNIP INC. QUALITY CONTROL

Test Configuration 12 Zone

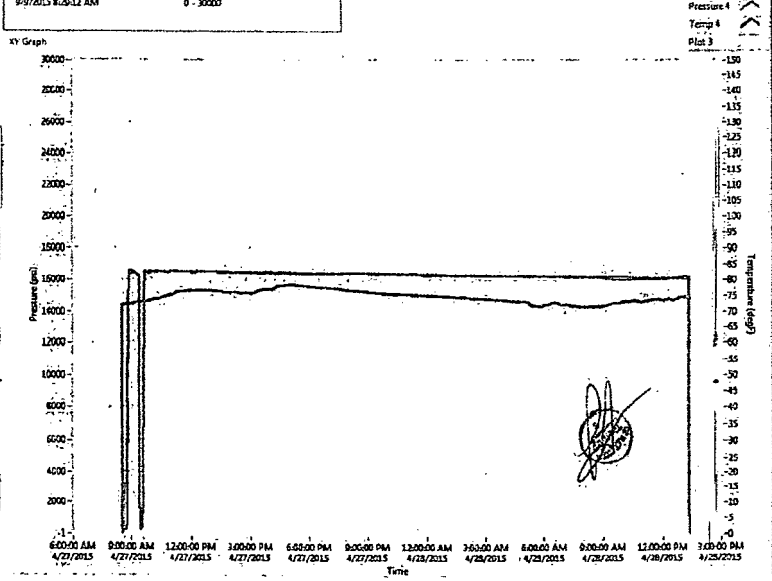
Production Information Input	
Customer ID OFS CANADA INC.	
Line S/N K12386-202 © K12387-202	Technician ROY

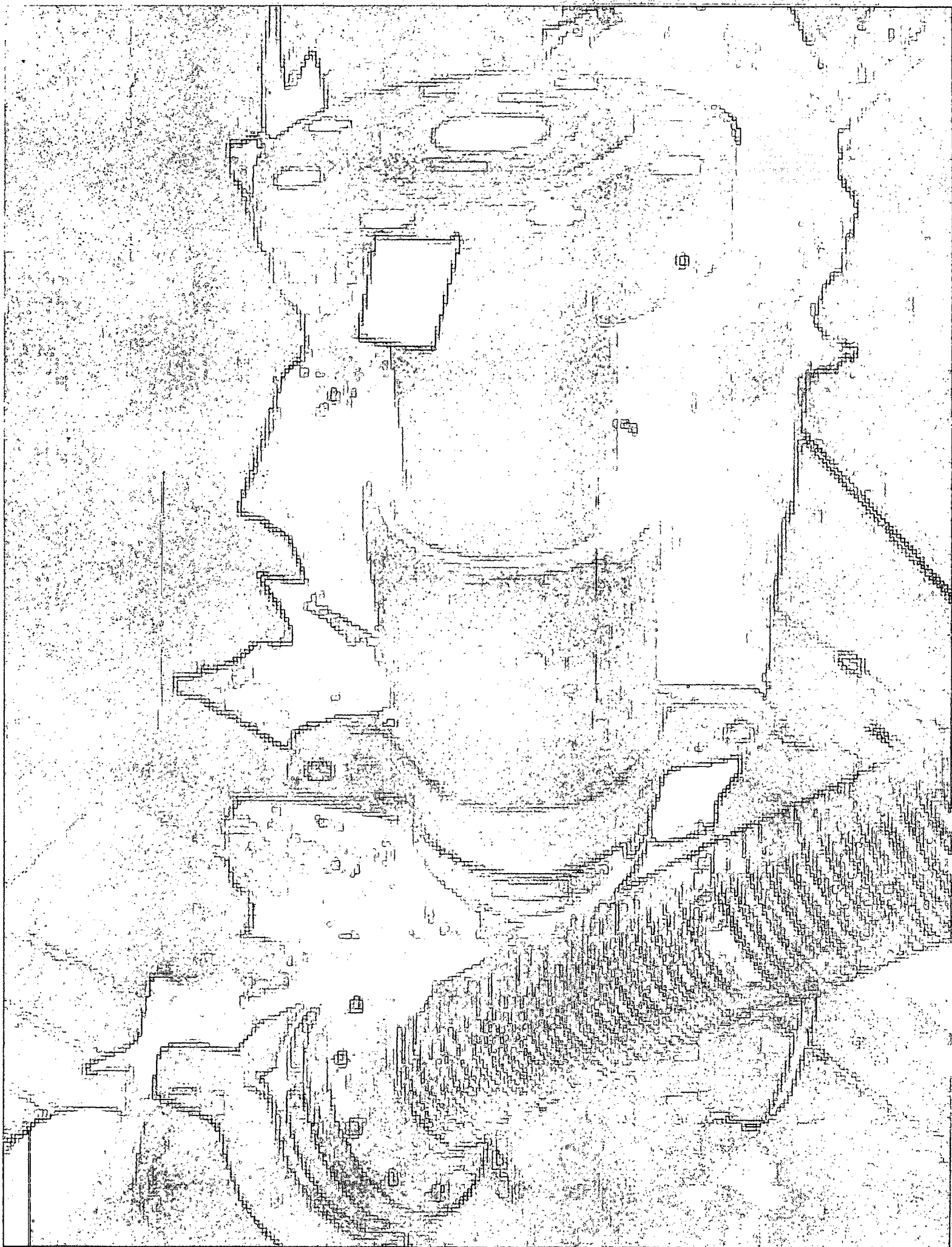
QC Information Input	
QC Insp PAT	Third Party BY
Witness? Yes	Test Procedure SIC 01 60
Special Instructions	

Station 04

Station Information	
Pressure Transducer S/N 1211570	Temperature S/N T13A
Scale Press 1500	Test Press 1900
Calib. Due 9/9/2015 8:29:11 AM	Pressure Range 0 - 3000

Calibration	
Raw Maximum 0.001000	Eng Maximum 0.000000
Raw Minimum 0.020000	Eng Minimum 30000.000000





SA K12387

5/17/15

WET

100

100

