

District I
1625 N. French Dr., Hobbs, NM 88240
Phone: (575) 393-6161 Fax: (575) 393-0720
District II
811 S. First St., Artesia, NM 88210
Phone: (575) 748-1283 Fax: (575) 748-9720
District III
1000 Rio Brazos Road, Aztec, NM 87410
Phone: (505) 334-6178 Fax: (505) 334-6170
District IV
1220 S. St. Francis Dr., Santa Fe, NM 87505
Phone: (505) 476-3460 Fax: (505) 476-3462

State of New Mexico
Energy, Minerals & Natural Resources
Department
OIL CONSERVATION DIVISION
1220 South St. Francis Dr.
Santa Fe, NM 87505

HOBBS OCD

FORM C-102

Revised August 1, 2011

Submit one copy to appropriate

District Office

JUL 30 2018

RECEIVED

AMENDED REPORT

As Drilled

WELL LOCATION AND ACREAGE DEDICATION PLAT

¹ API Number 30-015-44659		² Pool Code 97958		³ Pool Name WC-025 G-08 S233528D; LWR BONE SPRING	
⁴ Property Code 321163		⁵ Property Name IRVIN WALL STATE COM			⁶ Well Number #131H
⁷ OGRID No. 228937		⁸ Operator Name MATADOR PRODUCTION COMPANY			⁹ Elevation 3444'

¹⁰Surface Location

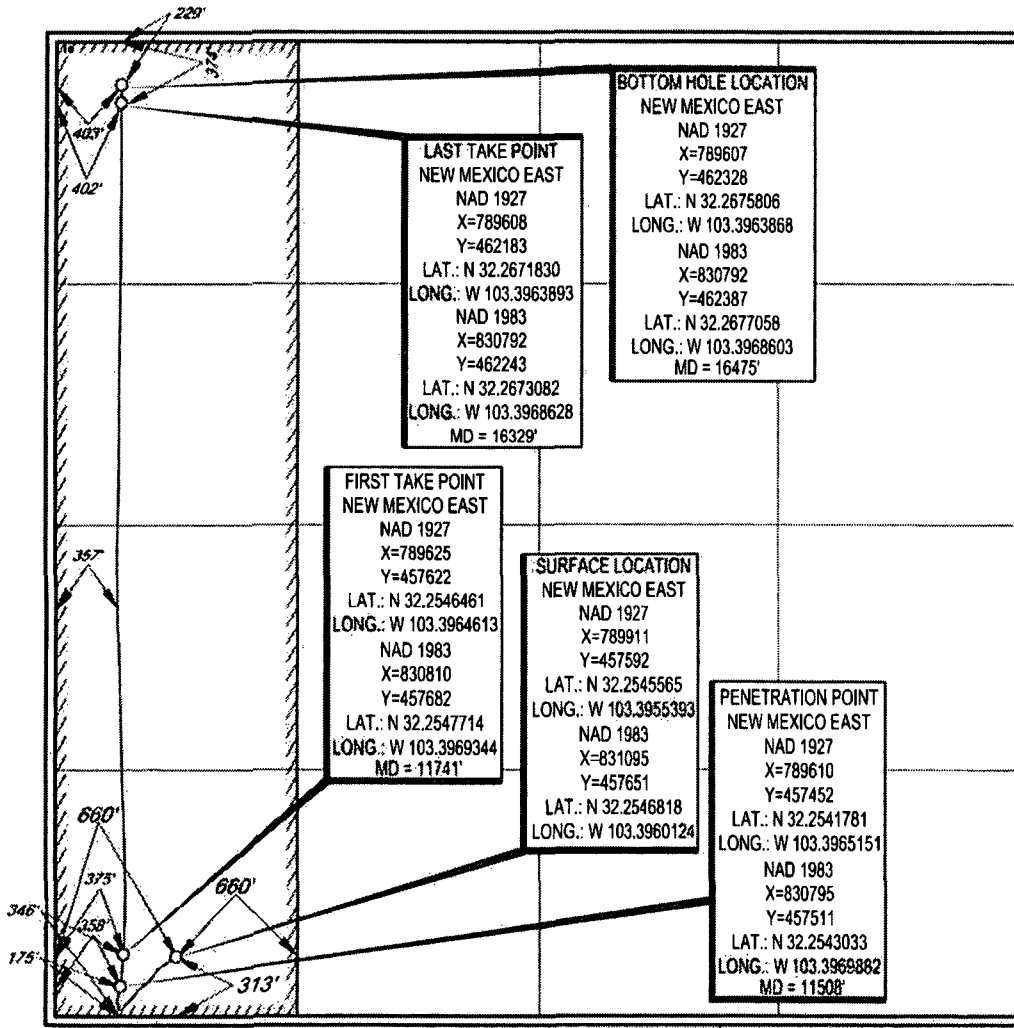
UL or lot no.	Section	Township	Range	Lot ldn	Feet from the	North/South line	Feet from the	East/West line	County
M	32	23-S	35-E	-	313'	SOUTH	660'	WEST	LEA

¹¹Bottom Hole Location If Different From Surface

UL or lot no.	Section	Township	Range	Lot ldn	Feet from the	North/South line	Feet from the	East/West line	County
D	32	23-S	35-E	-	229'	NORTH	403'	WEST	LEA

¹² Dedicated Acres 160	¹³ Joint or Infill	¹⁴ Consolidation Code	¹⁵ Order No.
--------------------------------------	-------------------------------	----------------------------------	-------------------------

No allowable will be assigned to this completion until all interests have been consolidated or a non-standard unit has been approved by the division.



¹⁷OPERATOR CERTIFICATION

I hereby certify that the information contained herein is true and complete to the best of my knowledge and belief, and that this organization either owns a working interest or unleased mineral interest in the land underlying the proposed bottom hole location or has a right to drill this well at this location pursuant to a contract with an owner of such a mineral or working interest, or to a voluntary pooling agreement or a compulsory pooling order heretofore entered by the division.

Sara Hartsfield 7/27/18
Signature Date

Sara Hartsfield
Printed Name

shartsfield@matadorresources.com
E-mail Address

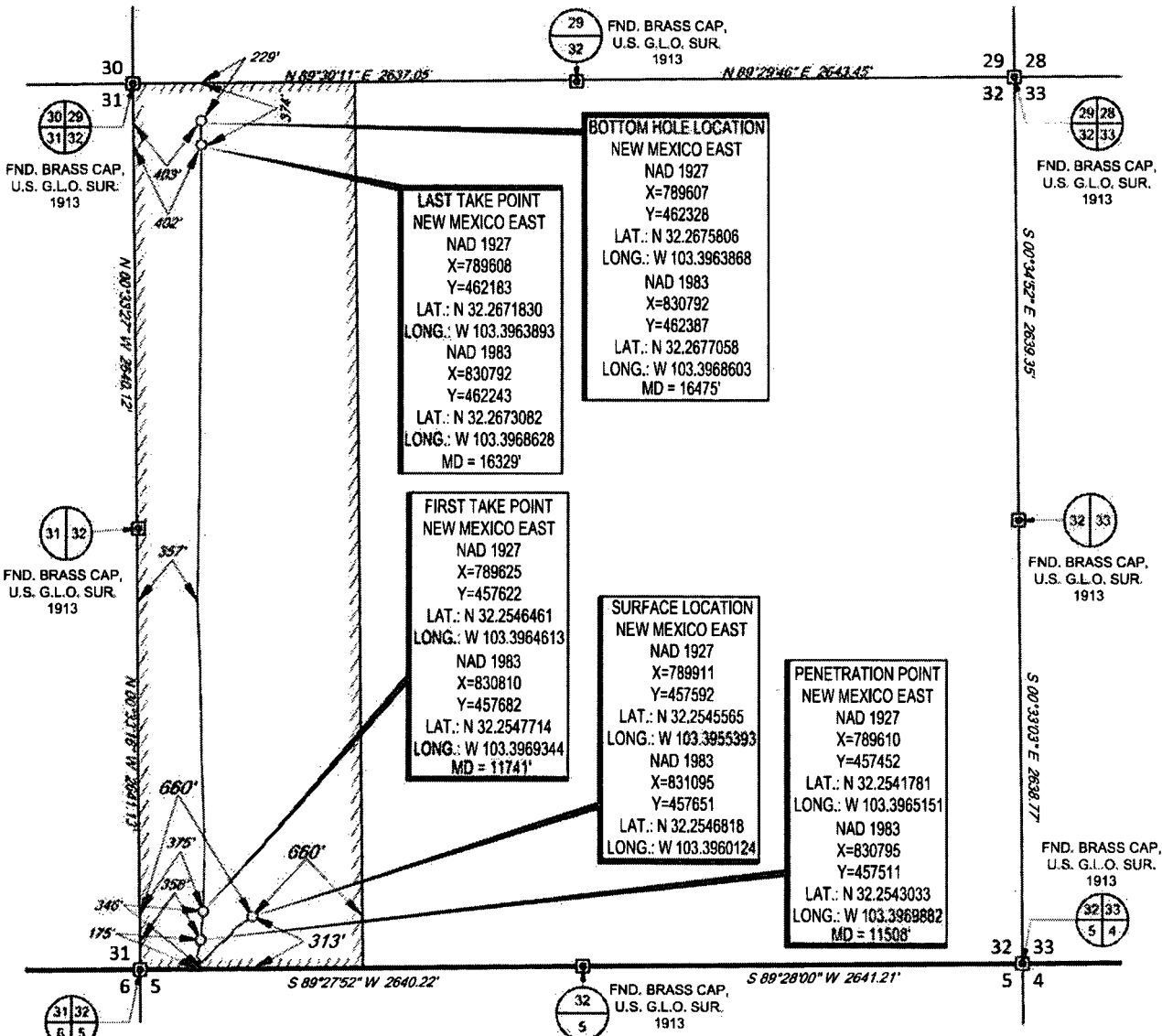
¹⁸SURVEYOR CERTIFICATION

I hereby certify that the well location shown on this plat was plotted from field notes of actual surveys made by me or under my supervision, and that the same is true to the best of my belief.

04/05/2018
Date of Survey
Signature and Seal of Professional Surveyor
MCTIAA 18329
NEW MEXICO
PROFESSIONAL SURVEYOR
Certificate Number

SCALE: 1" = 1000'
 0' 500' 1000'

SECTION 32, TOWNSHIP 23-S, RANGE 35-E, N.M.P.M.
 LEA COUNTY, NEW MEXICO



LAST TAKE POINT
 NEW MEXICO EAST
 NAD 1927
 X=789608
 Y=462183
 LAT.: N 32.2671830
 LONG.: W 103.3963893
 NAD 1983
 X=830792
 Y=462243
 LAT.: N 32.2673082
 LONG.: W 103.3968628
 MD = 16329'

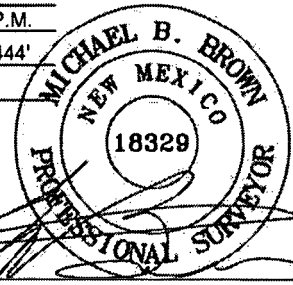
BOTTOM HOLE LOCATION
 NEW MEXICO EAST
 NAD 1927
 X=789607
 Y=462328
 LAT.: N 32.2675806
 LONG.: W 103.3963868
 NAD 1983
 X=830792
 Y=462387
 LAT.: N 32.2677058
 LONG.: W 103.3968603
 MD = 16475'

FIRST TAKE POINT
 NEW MEXICO EAST
 NAD 1927
 X=789625
 Y=457622
 LAT.: N 32.2546461
 LONG.: W 103.3964613
 NAD 1983
 X=830810
 Y=457682
 LAT.: N 32.2547714
 LONG.: W 103.3969344
 MD = 11741'

SURFACE LOCATION
 NEW MEXICO EAST
 NAD 1927
 X=789911
 Y=457592
 LAT.: N 32.2545565
 LONG.: W 103.3955393
 NAD 1983
 X=831095
 Y=457651
 LAT.: N 32.2546818
 LONG.: W 103.3960124

PENETRATION POINT
 NEW MEXICO EAST
 NAD 1927
 X=789610
 Y=457452
 LAT.: N 32.2541781
 LONG.: W 103.3965151
 NAD 1983
 X=830795
 Y=457511
 LAT.: N 32.2543033
 LONG.: W 103.3969882
 MD = 11508'

LEASE NAME & WELL NO.: IRVIN WALL STATE COM #131H
 SECTION 32 TWP 23-S RGE 35-E SURVEY N.M.P.M.
 COUNTY LEA STATE NM ELEVATION 3444'
 DESCRIPTION 313' FSL & 660' FWL



Michael Blake Brown, P.S. No. 18329
 JULY 24, 2018



TOPOGRAPHIC
 LOYALTY INNOVATION LEGACY
 1400 EVERMAN PARKWAY, Ste. 146 • FT. WORTH, TEXAS 76140
 TELEPHONE: (817) 744-7512 • FAX (817) 744-7554
 2903 NORTH BIG SPRING • MIDLAND, TEXAS 79705
 TELEPHONE: (432) 682-1653 OR (800) 767-1653 • FAX (432) 682-1743
 WWW.TOPOGRAPHIC.COM

IRVIN WALL STATE COM #131H AS-DRILLED	REVISION:	
	INT	DATE
DATE: 07/24/18		
FILE: AD_IRVIN_WALL_STATE_COM_131H_C102		
DRAWN BY: JLS		
SHEET: 1 OF 1		

NOTES:
 1. ORIGINAL DOCUMENT SIZE: 8.5" X 11"
 2. ALL BEARINGS, DISTANCES, AND COORDINATE VALUES CONTAINED HEREIN ARE GRID BASED UPON THE NEW MEXICO COORDINATE SYSTEM OF 1983, EAST ZONE, U.S. SURVEY FEET.
 3. THIS WELL LOCATION SHOWN HEREON HAS BEEN SURVEYED ON THE GROUND UNDER MY SUPERVISION AND PREPARED ACCORDING TO THE EVIDENCE FOUND AT THE TIME OF SURVEY, AND DATA PROVIDED BY MATADOR PRODUCTION COMPANY. THIS CERTIFICATION IS MADE AND LIMITED TO THOSE PERSONS OR ENTITIES SHOWN ON THE FACE OF THIS PLAT AND IS NON-TRANSFERABLE. THIS SURVEY IS CERTIFIED FOR THIS TRANSACTION ONLY.