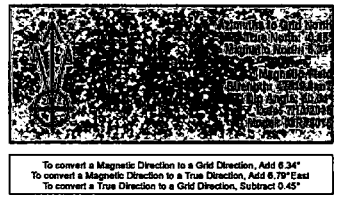




Lea County, NM (NAD 83 NME)
Stonewall 28 Fed Com #301H
H&P 424
Plan #3

PROJECT DETAILS: Lea County, NM (NAD 83 NME)
 Geodetic System: US State Plane 1983
 Datum: North American Datum 1983
 Ellipsoid: GRS 1980
 Zone: New Mexico Eastern Zone
 System Datum: Mean Sea Level

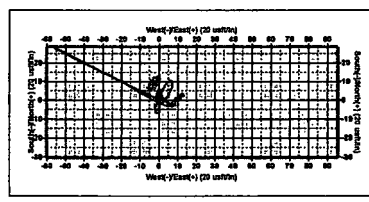
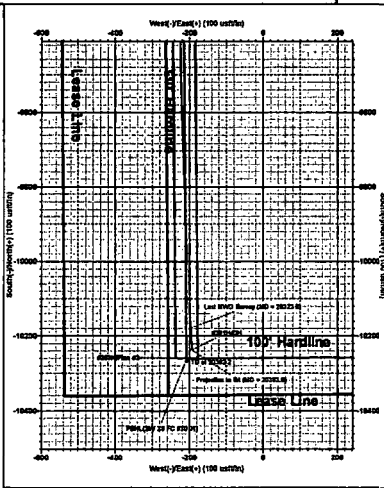
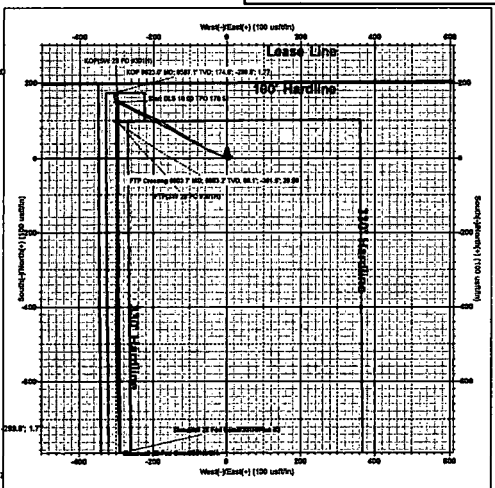
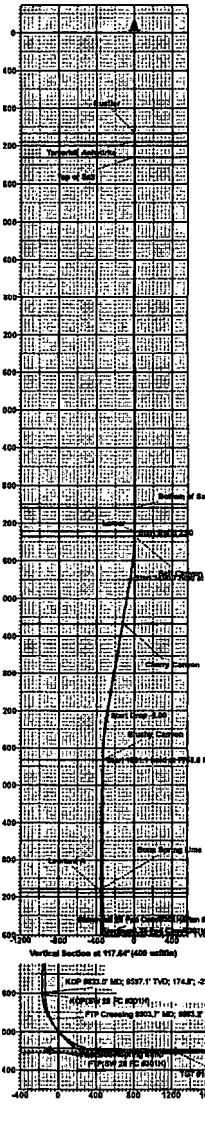
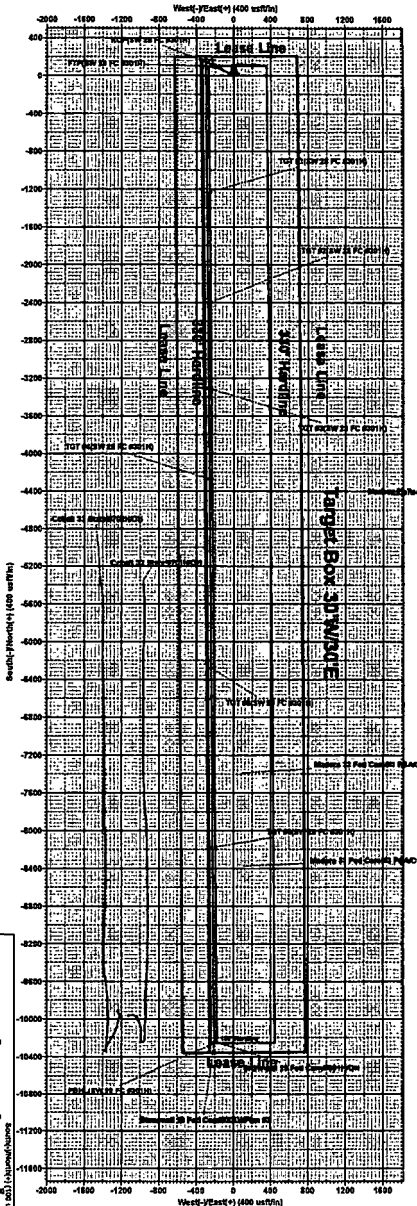
WELL DETAILS: #301H
 3500.0
 KB = 25 @ 3525.0usft (H&P 424)
 Northing 435811.00 Easting 804872.00 Latitude 32°11'42.807 N Longitude 103°28'53.013 W



SECTION DETAILS										
Sec	MD	Inc	Azi	TVD	+N-S	+E-W	Dleg	TFace	Vsect	Target
1	0.0	0.00	0.00	0.0	0.0	0.0	0.00	0.00	0.0	
2	5300.0	0.00	0.00	5300.0	0.0	0.0	0.00	0.00	0.0	
3	5732.5	9.65	296.57	5730.2	18.1	-38.3	2.00	296.57	-17.4	
4	7273.2	9.65	296.57	7249.8	129.9	-259.7	0.00	0.00	-124.6	
5	7765.6	0.00	0.00	7730.0	148.0	-298.0	2.00	180.00	-142.0	
6	9646.7	0.00	0.00	9621.1	148.0	-298.0	0.00	0.00	-142.0	KOP(SW 28 FC #301H)
7	10538.4	89.16	179.51	10194.0	-416.6	-291.2	10.00	179.51	422.3	
8	11359.3	89.16	179.51	10206.0	-1237.4	-284.1	0.00	0.00	1242.9	TGT #1(SW 28 FC #301H)
9	11366.4	89.02	179.51	10206.1	-1244.5	-284.1	2.00	180.00	1250.0	
10	12529.0	89.02	179.51	10226.0	-2406.9	-274.1	0.00	0.00	2411.9	TGT #2(SW 28 FC #301H)
11	12543.6	88.73	179.51	10226.3	-2421.5	-274.0	2.00	180.00	2426.5	
12	13431.6	88.73	179.51	10246.0	-3309.2	-266.4	0.00	0.00	3313.9	TGT #3(SW 28 FC #301H)
13	13435.7	88.81	179.51	10246.1	-3313.3	-266.4	2.00	0.00	3318.0	
14	14394.2	88.81	179.51	10266.0	-4271.6	-258.2	0.00	0.00	4275.9	TGT #4(SW 28 FC #301H)
15	14425.5	89.43	179.51	10266.5	-4302.8	-257.9	2.00	0.00	4307.2	
16	16404.2	89.43	179.51	10286.0	-6281.4	-240.9	0.00	0.00	6285.0	TGT #5(SW 28 FC #301H)
17	16406.2	89.40	179.51	10286.0	-6283.4	-240.9	2.00	180.00	6286.9	
18	18300.1	89.40	179.51	10306.0	-8177.1	-224.7	0.00	0.00	8180.0	TGT #6(SW 28 FC #301H)
19	18301.3	89.39	179.48	10306.0	-8178.3	-224.7	2.00	-92.24	8181.2	
20	20382.2	89.39	179.48	10326.0	-10259.0	-206.0	0.00	0.00	10261.1	PBHL(SW 28 FC #301H)

CASING DETAILS
 No casing data is available

WELLBORE TARGET DETAILS (MAP CO-ORDINATES)						
Name	TVD	+N-S	+E-W	Northing	Easting	
KOP(SW 28 FC #301H)	9621.1	148.0	-298.0	435811.00	804872.00	
TGT #1(SW 28 FC #301H)	10206.0	-1237.4	-284.1	435811.00	804872.00	
TGT #2(SW 28 FC #301H)	10226.0	-2406.9	-274.1	435811.00	804872.00	
TGT #3(SW 28 FC #301H)	10246.0	-3309.2	-266.4	435811.00	804872.00	
TGT #4(SW 28 FC #301H)	10266.0	-4271.6	-258.2	435811.00	804872.00	
TGT #5(SW 28 FC #301H)	10286.0	-6281.4	-240.9	435811.00	804872.00	
TGT #6(SW 28 FC #301H)	10306.0	-8177.1	-224.7	435811.00	804872.00	
PBHL(SW 28 FC #301H)	10326.0	-10259.0	-206.0	435811.00	804872.00	



HOBBS OCD
MAR 07 2019
RECEIVED



EOG Resources - Midland

Lea County, NM (NAD 83 NME)
Stonewall 28 Fed Com
#301H
OH

Design: OH

Midland PVA

31 July, 2018





Midland PVA



Company:	EOG Resources - Midland	Local Co-ordinate Reference:	Well #301H
Project:	Lea County, NM (NAD 83 NME)	TVD Reference:	KB = 25 @ 3525.0usft (H&P 424)
Site:	Stonewall 28 Fed Com	MID Reference:	KB = 25 @ 3525.0usft (H&P 424)
Well:	#301H	North Reference:	Grid
Wellbore:	OH	Survey Calculation Method:	Minimum Curvature
Design:	OH	Database:	EDM 5000.14

Project	Lea County, NM (NAD 83 NME)		
Map System:	US State Plane 1983	System Datum:	Mean Sea Level
Geo Datum:	North American Datum 1983		
Map Zone:	New Mexico Eastern Zone		

Site	Stonewall 28 Fed Com				
Site Position:		Northing:	435,811.00 usft	Latitude:	32° 11' 42.907 N
From:	Map	Easting:	804,872.00 usft	Longitude:	103° 28' 53.013 W
Position Uncertainty:	0.0 usft	Slot Radius:	13-3/16 "	Grid Convergence:	0.45 °

Well	#301H					
Well Position	+N-S	0.0 usft	Northing:	435,811.00 usft	Latitude:	32° 11' 42.907 N
	+E-W	0.0 usft	Easting:	804,872.00 usft	Longitude:	103° 28' 53.013 W
Position Uncertainty	0.0 usft		Wellhead Elevation:	usft	Ground Level:	3,500.0 usft

Wellbore	OH				
Magnetics	Model Name	Sample Date	Declination (°)	Dip Angle (°)	Field Strength (nT)
	IGRF2015	7/13/2018	6.78	60.04	47,819.76890782

Design	OH				
Audit Notes:					
Version:	1.0	Phase:	ACTUAL	Tie On Depth:	0.0
Vertical Section:	Depth From (TVD) (usft)	+N-S (usft)	+E-W (usft)	Direction (°)	
	0.0	0.0	0.0	181.15	

Survey Program	Date	7/31/2018		
From (usft)	To (usft)	Survey (Wellbore)	Tool Name	Description
141.0	20,383.0	Newsco MWD (OH)	MWD	OWSG MWD - Standard



Midland PVA



Company:	EOG Resources - Midland	Local Co-ordinate Reference:	Well #301H
Project:	Lea County, NM (NAD 83 NME)	TVD Reference:	KB = 25 @ 3525.0usft (H&P 424)
Site:	Stonewall 28 Fed Com	MD Reference:	KB = 25 @ 3525.0usft (H&P 424)
Well:	#301H	North Reference:	Grid
Wellbore:	OH	Survey Calculation Method:	Minimum Curvature
Design:	OH	Database:	EDM 5000.14

Survey											
MD (usft)	Inc (°)	Azi (azimuth) (°)	TVD (usft)	N/S (usft)	EW (usft)	DLeg (°/100usft)	Build (°/100usft)	Turn (°/100usft)	High to Plan (usft)	Right to Plan (usft)	
0.0	0.00	0.00	0.0	0.0	0.0	0.00	0.00	0.00	0.0	0.0	0.0
141.0	0.37	183.79	141.0	-0.5	0.0	0.26	0.26	0.00	-0.5	0.0	
300.0	0.15	106.79	300.0	-1.0	0.1	0.23	-0.14	-48.43	-0.4	-0.9	
450.0	0.13	54.32	450.0	-1.0	0.5	0.08	-0.01	-34.98	0.2	-1.1	
616.0	0.24	116.88	616.0	-1.0	0.9	0.13	0.07	37.75	-1.3	-0.5	
775.0	0.24	244.42	775.0	-1.3	0.9	0.27	0.00	80.15	0.3	1.6	
934.0	0.31	179.21	934.0	-1.9	0.6	0.19	0.04	-41.01	-1.9	0.6	
1,092.0	0.07	288.39	1,092.0	-2.3	0.5	0.22	-0.15	75.43	1.6	1.7	
1,155.0	0.31	92.29	1,155.0	-2.3	0.7	0.59	0.38	244.29	-0.8	-2.2	
1,281.0	1.40	50.60	1,281.0	-1.3	2.2	0.94	0.87	-33.09	-0.9	-2.4	
1,470.0	1.20	21.20	1,469.9	2.0	4.7	0.36	-0.11	-15.56	-3.6	-3.7	
1,658.0	1.20	29.10	1,657.9	5.6	6.4	0.09	0.00	4.20	-8.0	-2.9	
1,848.0	0.50	337.10	1,847.9	8.1	7.0	0.51	-0.37	-27.37	-4.7	-9.6	
2,036.0	0.60	0.00	2,035.9	9.8	6.7	0.13	0.05	12.18	-9.8	-6.7	
2,224.0	0.50	284.00	2,223.9	10.7	5.9	0.44	-0.05	-51.06	7.0	-10.0	
2,413.0	0.80	212.70	2,412.8	9.5	4.4	0.33	0.16	-27.14	10.4	-1.5	
2,602.0	0.80	216.70	2,601.8	7.3	2.9	0.03	0.00	2.12	7.6	-2.1	
2,791.0	0.80	209.50	2,790.8	5.1	1.4	0.05	0.00	-3.81	5.2	-1.3	
2,980.0	0.80	164.00	2,979.8	2.7	1.1	0.33	0.00	-24.07	2.3	1.8	
3,169.0	0.90	140.20	3,168.8	0.3	2.4	0.19	0.05	-12.59	-1.3	2.1	
3,358.0	1.50	120.70	3,357.7	-2.1	5.5	0.38	0.32	-10.32	-5.8	1.0	
3,548.0	0.70	75.30	3,547.7	-3.1	8.8	0.59	-0.42	-23.89	-7.7	-5.2	
3,737.0	0.80	284.20	3,736.7	-2.5	8.6	0.77	0.05	-79.95	9.0	0.3	
3,926.0	0.50	309.70	3,925.7	-1.6	6.7	0.22	-0.16	13.49	6.2	-3.0	
4,115.0	0.40	197.00	4,114.7	-1.7	5.9	0.40	-0.05	-59.63	0.1	6.1	
4,305.0	0.40	120.80	4,304.7	-2.7	6.3	0.26	0.00	-40.11	-6.8	0.9	
4,494.0	0.20	149.40	4,493.7	-3.3	7.0	0.13	-0.11	15.13	-6.4	4.3	



Midland PVA



Company:	EOG Resources - Midland	Local Co-ordinate Reference:	Well #301H
Project:	Lea County, NM (NAD 83 NME)	TYD Reference:	KB = 25 @ 3525.0usft (H&P 424)
Site:	Stonewall 28 Fed Com	MD Reference:	KB = 25 @ 3525.0usft (H&P 424)
Well:	#301H	North Reference:	Grid
Wellbore:	OH	Survey Calculation Method:	Minimum Curvature
Design:	OH	Database:	EDM 5000.14

MD (usft)	Inc (")	Azi (azimuth) (")	TVD (usft)	N/S (usft)	EW (usft)	DLeg ("/100usft)	Build ("/100usft)	Turn ("/100usft)	High to Plan (usft)	Right to Plan (usft)
4,683.0	0.10	220.50	4,682.7	-3.7	7.1	0.10	-0.05	37.62	1.8	7.8
4,873.0	1.10	297.00	4,872.6	-3.0	5.3	0.57	0.53	40.26	6.1	0.3
5,062.0	0.90	126.60	5,061.6	-3.1	4.9	1.05	-0.11	-90.16	-5.8	0.4
5,175.0	0.90	283.60	5,174.6	-3.4	4.7	1.56	0.00	138.94	5.4	2.2
5,234.0	1.00	280.00	5,233.6	-3.2	3.8	0.20	0.17	-6.10	4.3	2.5
5,423.0	4.00	300.30	5,422.4	0.4	-3.5	1.63	1.59	10.74	-0.6	1.3
5,612.0	5.70	300.40	5,610.7	8.5	-17.3	0.90	0.90	0.05	-2.4	0.3
5,800.0	9.40	294.30	5,797.1	19.5	-39.4	2.01	1.97	-3.24	-0.5	0.1
5,989.0	10.40	301.20	5,983.3	34.7	-68.0	0.82	0.53	3.65	-1.3	-0.5
6,177.0	8.80	292.60	6,168.6	49.0	-95.8	1.14	-0.85	-4.57	-1.0	-1.1
6,366.0	9.60	302.70	6,355.2	63.1	-122.4	0.95	0.42	5.34	0.4	-1.7
6,556.0	9.10	302.70	6,542.7	79.8	-148.4	0.26	-0.26	0.00	1.2	-5.2
6,745.0	9.80	298.20	6,729.1	95.5	-175.2	0.54	0.37	-2.38	2.3	-7.1
6,934.0	9.60	290.90	6,915.4	108.7	-204.1	0.66	-0.11	-3.86	3.0	-5.7
7,122.0	9.60	294.50	7,100.8	120.8	-233.0	0.32	0.00	1.91	2.8	-3.7
7,312.0	8.20	295.40	7,288.5	133.2	-259.6	0.74	-0.74	0.47	4.9	-2.9
7,501.0	6.20	301.70	7,476.0	144.3	-280.5	1.14	-1.06	3.33	3.9	-4.0
7,689.0	1.90	293.80	7,663.5	150.9	-292.0	2.30	-2.29	-4.20	1.7	-4.3
7,878.0	1.40	296.90	7,852.4	153.2	-296.9	0.27	-0.26	1.64	-3.2	-4.2
8,067.0	1.10	291.30	8,041.4	154.9	-300.7	0.17	-0.16	-2.86	-6.9	-4.8
8,256.0	1.20	288.50	8,230.3	156.2	-304.2	0.06	0.05	-1.48	-10.4	-5.2
8,445.0	1.00	358.50	8,419.3	158.5	-306.1	0.67	-0.11	37.04	-10.7	9.9
8,634.0	1.40	9.30	8,608.3	162.4	-305.8	0.24	0.21	5.71	-12.6	12.0
8,822.0	1.40	3.00	8,796.2	167.0	-305.3	0.08	0.00	-3.35	-18.5	10.3
9,011.0	0.80	24.40	8,985.2	170.5	-304.7	0.38	-0.32	11.32	-16.9	17.2
9,200.0	0.80	92.00	9,174.2	171.6	-302.8	0.47	0.00	35.77	7.6	23.4
9,389.0	0.60	48.50	9,363.1	172.2	-300.7	0.29	-0.11	-23.02	-12.5	21.3



Midland PVA



Company:	EOG Resources - Midland	Local Co-ordinate Reference:	Well #301H
Project:	Lea County, NM (NAD 83 NME)	TVD Reference:	KB = 25 @ 3525.0usft (H&P 424)
Site:	Stonewall 28 Fed Com	MD Reference:	KB = 25 @ 3525.0usft (H&P 424)
Well:	#301H	North Reference:	Grid
Wellbore:	OH	Survey Calculation Method:	Minimum Curvature
Design:	OH	Database:	EDM 5000.14

MD (usft)	Inc (")	Azi (azimuth) (")	TVD (usft)	N/S (usft)	E/W (usft)	DLeg ("/100usft)	Build ("/100usft)	Turn ("/100usft)	High to Plan (usft)	Right to Plan (usft)
9,525.0	1.00	7.90	9,499.1	173.9	-300.0	0.49	0.29	-29.85	-25.1	7.6
9,585.0	1.20	10.20	9,559.1	175.0	-299.9	0.34	0.33	3.83	-25.9	8.6
9,623.0	1.77	181.76	9,597.1	174.8	-299.8	7.78	1.49	451.23	26.7	-4.6
KOP 9623.0' MD; 9597.1' TVD; 174.8'; -299.8'; 1.77										
9,680.0	6.20	184.20	9,654.0	170.9	-300.1	7.78	7.78	4.29	23.4	-5.8
9,774.0	19.60	180.50	9,745.4	150.0	-300.8	14.28	14.28	-3.94	15.2	-4.8
9,869.0	26.90	181.40	9,832.6	112.5	-301.2	7.69	7.68	0.95	4.5	-5.7
9,903.7	29.56	180.73	9,863.2	96.1	-301.5	7.71	7.65	-1.94	1.5	-6.0
FTP Crossing 9903.7' MD; 9863.2' TVD; 96.1'; -301.5'; 29.56										
9,963.0	34.10	179.80	9,913.6	64.8	-301.7	7.71	7.66	-1.56	-2.5	-6.4
10,058.0	40.10	176.50	9,989.3	7.6	-299.7	6.65	6.32	-3.47	-4.7	-5.1
10,152.0	43.80	177.10	10,059.3	-55.0	-296.2	3.75	3.72	0.64	0.6	-1.9
10,161.0	42.90	176.90	10,065.9	-61.2	-295.9	7.93	-7.78	-2.22	1.7	-1.6
10,252.0	50.60	179.50	10,128.2	-127.4	-293.9	8.71	8.46	2.86	15.0	-0.3
10,315.0	63.90	180.60	10,162.2	-180.2	-294.0	21.16	21.11	1.75	20.9	-1.0
10,346.0	69.90	180.30	10,174.3	-208.7	-294.2	19.38	19.35	-0.97	21.0	-1.4
10,384.0	79.00	181.30	10,184.5	-245.3	-294.7	24.08	23.95	2.63	18.4	-2.3
10,441.0	89.70	182.10	10,190.1	-301.9	-296.4	18.82	18.77	1.40	9.1	-4.4
10,536.0	86.80	180.90	10,193.0	-396.8	-298.9	3.30	-3.05	-1.26	-0.4	-7.6
10,630.0	86.60	179.20	10,198.4	-490.7	-299.0	1.82	-0.21	-1.81	3.3	-8.4
10,725.0	86.40	178.90	10,204.2	-585.5	-297.4	0.38	-0.21	-0.32	7.8	-7.7
10,819.0	88.50	177.60	10,208.4	-679.3	-294.5	2.63	2.23	-1.38	10.6	-5.6
10,914.0	88.40	178.20	10,211.0	-774.2	-291.1	0.64	-0.11	0.63	11.8	-3.0
11,008.0	89.30	178.60	10,212.9	-868.2	-288.4	1.05	0.96	0.43	12.3	-1.1
11,103.0	87.90	178.30	10,215.2	-963.1	-285.9	1.51	-1.47	-0.32	13.2	0.6
11,197.0	87.40	177.70	10,219.0	-1,057.0	-282.6	0.83	-0.53	-0.84	15.7	3.1
11,292.0	90.10	179.10	10,221.1	-1,151.9	-279.9	3.20	2.84	1.47	16.4	4.9



Midland PVA



Company:	EOG Resources - Midland	Local Co-ordinate Reference:	Well #301H
Project:	Lea County, NM (NAD 83 NME)	TVD Reference:	KB = 25 @ 3525.0usft (H&P 424)
Site:	Stonewall 28 Fed Com	MD Reference:	KB = 25 @ 3525.0usft (H&P 424)
Well:	#301H	North Reference:	Grid
Wellbore:	OH	Survey Calculation Method:	Minimum Curvature
Design:	OH	Database:	EDM 5000.14

MD (usft)	Inc (°)	Azi (azimuth) (°)	TVD (usft)	N/S (usft)	E/W (usft)	DLeg (°/100usft)	Build (°/100usft)	Turn (°/100usft)	High to Plan (usft)	Right to Plan (usft)
11,387.0	90.90	178.90	10,220.3	-1,246.9	-278.3	0.87	0.84	-0.21	14.1	5.8
11,481.0	91.90	179.30	10,218.0	-1,340.8	-276.8	1.15	1.06	0.43	10.2	6.5
11,576.0	90.60	179.60	10,215.9	-1,435.8	-275.9	1.40	-1.37	0.32	6.5	6.5
11,670.0	90.30	179.10	10,215.2	-1,529.8	-274.8	0.62	-0.32	-0.53	4.2	6.8
11,765.0	91.20	179.40	10,213.9	-1,624.8	-273.6	1.00	0.95	0.32	1.3	7.2
11,860.0	91.80	179.70	10,211.6	-1,719.7	-272.8	0.53	0.42	0.32	-2.6	7.2
11,954.0	91.20	179.50	10,209.3	-1,813.7	-272.2	0.48	-0.43	-0.21	-6.5	7.0
12,049.0	92.00	179.40	10,206.7	-1,908.7	-271.3	0.85	0.84	-0.11	-10.8	7.1
12,144.0	89.80	179.80	10,205.2	-2,003.7	-270.6	2.35	-2.32	0.42	-13.9	7.0
12,238.0	90.10	179.80	10,205.3	-2,097.7	-270.3	0.32	0.32	0.00	-15.5	6.5
12,333.0	90.30	179.60	10,204.9	-2,192.7	-269.8	0.30	0.21	-0.21	-17.4	6.2
12,428.0	90.40	179.70	10,204.3	-2,287.6	-269.2	0.15	0.11	0.11	-19.8	5.9
12,522.0	89.50	179.10	10,204.4	-2,381.6	-268.2	1.15	-0.96	-0.64	-21.1	6.1
12,617.0	89.40	179.10	10,205.3	-2,476.6	-266.7	0.11	-0.11	0.00	-22.2	6.8
12,711.0	89.50	179.00	10,206.2	-2,570.6	-265.2	0.15	0.11	-0.11	-23.4	7.6
12,806.0	89.60	178.80	10,207.0	-2,665.6	-263.3	0.24	0.11	-0.21	-24.7	8.6
12,900.0	89.80	178.40	10,207.5	-2,759.6	-261.0	0.48	0.21	-0.43	-26.3	10.0
12,995.0	86.00	177.70	10,211.0	-2,854.4	-257.8	4.07	-4.00	-0.74	-25.0	12.5
13,090.0	88.80	179.00	10,215.3	-2,949.3	-255.1	3.25	2.95	1.37	-22.7	14.4
13,184.0	91.20	179.60	10,215.3	-3,043.3	-253.9	2.63	2.55	0.64	-24.8	14.7
13,278.0	90.40	179.10	10,214.0	-3,137.2	-252.9	1.00	-0.85	-0.53	-28.2	15.0
13,373.0	91.40	180.10	10,212.5	-3,232.2	-252.2	1.49	1.05	1.05	-31.8	14.9
13,467.0	88.90	178.30	10,212.2	-3,326.2	-250.9	3.28	-2.66	-1.91	-34.1	15.3
13,562.0	90.60	179.40	10,212.6	-3,421.2	-249.0	2.13	1.79	1.16	-35.7	16.5
13,656.0	92.80	181.20	10,209.8	-3,515.1	-249.5	3.02	2.34	1.91	-40.4	15.2
13,681.0	92.90	179.30	10,208.6	-3,540.1	-249.6	7.60	0.40	-7.60	-42.2	14.9
13,776.0	89.40	180.00	10,206.7	-3,635.1	-249.0	3.76	-3.68	0.74	-46.1	14.6



Midland PVA



Company:	EOG Resources - Midland	Local Co-ordinate Reference:	Well #301H
Project:	Lea County, NM (NAD 83 NME)	TVD Reference:	KB = 25 @ 3525.0usft (H&P 424)
Site:	Stonewall 28 Fed Com	MD Reference:	KB = 25 @ 3525.0usft (H&P 424)
Well:	#301H	North Reference:	Grid
Wellbore:	OH	Survey Calculation Method:	Minimum Curvature
Design:	OH	Database:	EDM 5000.14

MD (usft)	Inc (°)	Azi (azimuth) (°)	TVD (usft)	N/S (usft)	E/W (usft)	DLeg (°/100usft)	Build (°/100usft)	Turn (°/100usft)	High to Plan (usft)	Right to Plan (usft)
13,871.0	89.80	178.90	10,207.4	-3,730.0	-248.1	1.23	0.42	-1.16	-47.4	14.7
13,965.0	88.30	179.80	10,208.9	-3,824.0	-247.0	1.86	-1.60	0.96	-47.8	15.0
14,060.0	87.70	179.10	10,212.2	-3,919.0	-246.1	0.97	-0.63	-0.74	-46.4	15.1
14,154.0	86.90	177.40	10,216.7	-4,012.8	-243.3	2.00	-0.85	-1.81	-44.0	17.1
14,249.0	87.60	179.00	10,221.2	-4,107.6	-240.3	1.84	0.74	1.68	-41.4	19.3
14,343.0	89.00	181.30	10,224.0	-4,201.6	-240.5	2.86	1.49	2.45	-40.5	18.3
14,438.0	89.60	181.50	10,225.2	-4,296.6	-242.8	0.67	0.63	0.21	-41.2	15.1
14,533.0	88.70	181.40	10,226.6	-4,391.5	-245.2	0.95	-0.95	-0.11	-40.8	11.9
14,627.0	89.60	181.30	10,228.0	-4,485.5	-247.5	0.96	0.96	-0.11	-40.3	8.9
14,722.0	87.60	181.20	10,230.3	-4,580.4	-249.5	2.11	-2.11	-0.11	-38.9	6.0
14,816.0	87.90	181.80	10,234.0	-4,674.3	-252.0	0.71	0.32	0.64	-36.2	2.7
14,911.0	88.00	181.80	10,237.4	-4,769.2	-255.0	0.11	0.11	0.00	-33.7	-1.1
15,005.0	88.00	182.10	10,240.7	-4,863.1	-258.2	0.32	0.00	0.32	-31.3	-5.1
15,100.0	87.00	179.90	10,244.8	-4,958.0	-259.8	2.54	-1.05	-2.32	-28.1	-7.5
15,195.0	85.50	179.60	10,251.0	-5,052.8	-259.4	1.61	-1.58	-0.32	-22.9	-8.0
15,289.0	85.40	179.90	10,258.5	-5,146.5	-259.0	0.34	-0.11	0.32	-16.3	-8.4
15,383.0	89.90	179.70	10,262.3	-5,240.4	-258.7	4.79	4.79	-0.21	-13.4	-8.8
15,476.0	89.60	179.20	10,262.7	-5,333.4	-257.8	0.63	-0.32	-0.54	-13.9	-8.7
15,571.0	89.50	178.30	10,263.5	-5,428.3	-255.7	0.95	-0.11	-0.95	-14.1	-7.5
15,665.0	89.70	177.90	10,264.1	-5,522.3	-252.6	0.48	0.21	-0.43	-14.4	-5.1
15,759.0	89.90	177.90	10,264.5	-5,616.2	-249.1	0.21	0.21	0.00	-15.0	-2.5
15,854.0	88.90	179.00	10,265.5	-5,711.2	-246.6	1.56	-1.05	1.16	-14.9	-0.8
15,948.0	89.40	179.50	10,266.9	-5,805.2	-245.3	0.75	0.53	0.53	-14.4	-0.3
16,043.0	87.70	179.30	10,269.3	-5,900.1	-244.4	1.80	-1.79	-0.21	-13.0	-0.1
16,138.0	88.30	179.20	10,272.6	-5,995.1	-243.1	0.64	0.63	-0.11	-10.6	0.3
16,232.0	88.40	179.70	10,275.3	-6,089.0	-242.2	0.54	0.11	0.53	-8.8	0.4
16,327.0	89.10	179.60	10,277.3	-6,184.0	-241.6	0.74	0.74	-0.11	-7.7	0.2



Midland PVA



Company:	EOG Resources - Midland	Local Co-ordinate Reference:	Well #301H
Project:	Lea County, NM (NAD 83 NME)	TVD Reference:	KB = 25 @ 3525.0usft (H&P 424)
Site:	Stonewall 2B Fed Com	MD Reference:	KB = 25 @ 3525.0usft (H&P 424)
Well:	#301H	North Reference:	Grid
Wellbore:	OH	Survey Calculation Method:	Minimum Curvature
Design:	OH	Database:	EDM 5000.14

MD (usft)	Inc (°)	Azi (azimuth) (°)	TVD (usft)	N/S (usft)	EW (usft)	DLeg (°/100usft)	Build (°/100usft)	Turn (°/100usft)	High to Plan (usft)	Right to Plan (usft)
16,422.0	89.20	179.10	10,278.8	-6,279.0	-240.6	0.54	0.11	-0.53	-7.2	0.4
16,516.0	89.70	178.90	10,279.7	-6,373.0	-238.9	0.57	0.53	-0.21	-7.3	1.3
16,611.0	89.70	178.70	10,280.2	-6,467.9	-236.9	0.21	0.00	-0.21	-7.8	2.4
16,705.0	90.20	178.70	10,280.2	-6,561.9	-234.8	0.53	0.53	0.00	-8.7	3.8
16,800.0	88.70	178.30	10,281.2	-6,656.9	-232.3	1.63	-1.58	-0.42	-8.8	5.4
16,895.0	88.20	178.10	10,283.7	-6,751.8	-229.3	0.57	-0.53	-0.21	-7.2	7.6
16,989.0	89.20	178.70	10,285.9	-6,845.7	-226.7	1.24	1.06	0.64	-6.1	9.4
17,084.0	89.90	178.60	10,286.6	-6,940.7	-224.5	0.74	0.74	-0.11	-6.4	10.8
17,178.0	89.50	178.30	10,287.1	-7,034.7	-221.9	0.53	-0.43	-0.32	-6.9	12.6
17,272.0	89.40	179.80	10,288.0	-7,128.6	-220.4	1.60	-0.11	1.60	-6.9	13.3
17,367.0	90.30	180.20	10,288.2	-7,223.6	-220.4	1.04	0.95	0.42	-7.7	12.5
17,461.0	90.80	180.10	10,287.3	-7,317.6	-220.6	0.54	0.53	-0.11	-9.6	11.5
17,556.0	88.40	178.80	10,288.0	-7,412.6	-219.7	2.87	-2.53	-1.37	-9.9	11.8
17,651.0	88.50	178.30	10,290.6	-7,507.5	-217.3	0.54	0.11	-0.53	-8.4	13.2
17,745.0	88.80	178.30	10,292.8	-7,601.5	-214.5	0.32	0.32	0.00	-7.1	15.1
17,840.0	88.20	179.30	10,295.3	-7,696.4	-212.5	1.23	-0.63	1.05	-5.7	16.3
17,934.0	88.30	181.00	10,298.1	-7,790.4	-212.8	1.81	0.11	1.81	-3.8	15.3
18,029.0	89.20	181.70	10,300.2	-7,885.3	-215.0	1.20	0.95	0.74	-2.7	12.2
18,124.0	87.10	180.70	10,303.3	-7,980.3	-217.0	2.45	-2.21	-1.05	-0.6	9.4
18,218.0	87.40	180.70	10,307.8	-8,074.1	-218.1	0.32	0.32	0.00	2.9	7.5
18,313.0	87.90	180.60	10,311.7	-8,169.0	-219.2	0.54	0.53	-0.11	5.8	5.6
18,407.0	88.40	180.70	10,314.7	-8,263.0	-220.3	0.54	0.53	0.11	7.8	3.7
18,502.0	88.80	180.60	10,317.0	-8,358.0	-221.3	0.43	0.42	-0.11	9.1	1.7
18,596.0	89.40	180.70	10,318.5	-8,451.9	-222.4	0.65	0.64	0.11	9.6	-0.2
18,691.0	89.60	180.40	10,319.4	-8,546.9	-223.3	0.38	0.21	-0.32	9.4	-1.9
18,785.0	90.00	180.80	10,319.7	-8,640.9	-224.3	0.60	0.43	0.43	8.8	-3.8
18,880.0	90.80	179.80	10,319.0	-8,735.9	-224.8	1.35	0.84	-1.05	7.1	-5.1



Midland PVA



Company:	EOG Resources - Midland	Local Co-ordinate Reference:	Well #301H
Project:	Lea County, NM (NAD 83 NME)	TVD Reference:	KB = 25 @ 3525.0usft (H&P 424)
Site:	Stonewall 28 Fed Com	MD Reference:	KB = 25 @ 3525.0usft (H&P 424)
Well:	#301H	North Reference:	Grid
Wellbore:	OH	Survey Calculation Method:	Minimum Curvature
Design:	OH	Database:	EDM 5000.14

MD (usft)	Inc (°)	Azi (azimuth) (°)	TVD (usft)	N/S (usft)	E/W (usft)	DLeg (°/100usft)	Build (°/100usft)	Turn (°/100usft)	High to Plan (usft)	Right to Plan (usft)
18,974.0	89.70	179.30	10,318.6	-8,829.9	-224.1	1.29	-1.17	-0.53	5.7	-5.2
19,068.0	89.80	179.30	10,319.0	-8,923.9	-222.9	0.11	0.11	0.00	5.1	-4.9
19,162.0	89.80	178.70	10,319.3	-9,017.9	-221.3	0.64	0.00	-0.64	4.5	-4.1
19,257.0	91.00	179.50	10,318.7	-9,112.9	-219.8	1.52	1.26	0.84	2.8	-3.5
19,351.0	89.80	180.70	10,318.0	-9,206.9	-220.0	1.81	-1.28	1.28	1.1	-4.5
19,445.0	91.10	182.10	10,317.3	-9,300.8	-222.3	2.03	1.38	1.49	-0.6	-7.6
19,539.0	89.00	179.80	10,317.2	-9,394.8	-223.8	3.31	-2.23	-2.45	-1.7	-10.0
19,634.0	88.60	179.10	10,319.2	-9,489.8	-222.9	0.85	-0.42	-0.74	-0.7	-10.0
19,728.0	87.90	178.20	10,322.1	-9,583.7	-220.7	1.21	-0.74	-0.96	1.2	-8.6
19,822.0	87.90	178.00	10,325.5	-9,677.6	-217.6	0.21	0.00	-0.21	3.7	-6.3
19,916.0	87.90	177.90	10,329.0	-9,771.5	-214.2	0.11	0.00	-0.11	6.1	-3.8
20,010.0	87.10	177.70	10,333.1	-9,865.3	-210.6	0.88	-0.85	-0.21	9.2	-1.1
20,104.0	88.00	177.60	10,337.1	-9,959.1	-206.8	0.96	0.96	-0.11	12.2	1.9
20,198.0	87.50	176.80	10,340.8	-10,053.0	-202.2	1.00	-0.53	-0.85	14.9	5.7
20,292.0	87.70	177.10	10,344.7	-10,146.7	-197.2	0.38	0.21	0.32	17.9	9.9
20,323.0	87.70	177.00	10,345.9	-10,177.7	-195.6	0.32	0.00	-0.32	18.8	11.2
Last MWD Survey (MD = 20323.0)										
20,383.0	87.70	177.00	10,348.4	-10,237.5	-192.4	0.00	0.00	0.00	20.6	13.8
Projection to Bit (MD = 20383.0)										

Measured Depth (usft)	Vertical Depth (usft)	Local Coordinates		Comment
		+N/S (usft)	+E/W (usft)	
9,623.0	9,597.1	174.8	-299.8	KOP 9623.0' MD; 9597.1' TVD; 174.8'; -299.8'; 1.77
9,903.7	9,863.2	96.1	-301.5	FTP Crossing 9903.7' MD; 9863.2' TVD; 96.1'; -301.5'; 29.56
20,323.0	10,345.9	-10,177.7	-195.6	Last MWD Survey (MD = 20323.0)
20,383.0	10,348.4	-10,237.5	-192.4	Projection to Bit (MD = 20383.0)



Midland PVA



Company:	EOG Resources - Midland	Local Co-ordinate Reference:	Well #301H
Project:	Lea County, NM (NAD 83 NME)	TVD Reference:	KB = 25 @ 3525.0usft (H&P 424)
Site:	Stonewall 28 Fed Com	MD Reference:	KB = 25 @ 3525.0usft (H&P 424)
Well:	#301H	North Reference:	Grid
Wellbore:	OH	Survey Calculation Method:	Minimum Curvature
Design:	OH	Database:	EDM 5000.14

Checked By: _____	Approved By: _____	Date: _____
-------------------	--------------------	-------------