

## DISTRICT I

P.O. Box 1980, Hobbs, NM 88241-1980

## DISTRICT II

P.O. Box Drawer DD, Artesia, NM 88211-0719

## DISTRICT III

1000 Rio Brazos Rd., Aztec, NM 87410

## DISTRICT IV

P.O. Box 2088, Santa Fe, NM 87504-2088

State of New Mexico  
Energy, Minerals and Natural Resources Department

## OIL CONSERVATION DIVISION

P.O. Box 2088  
Santa Fe, New Mexico 87504-2088

Form C-102

Revised February 10, 1999

Instructions on back

Submit to Appropriate District Office

State Lease - 4 Copies

Fee Lease - 3 Copies

☒ AMENDED REPORT

## WELL LOCATION AND ACREAGE DEDICATION PLAT

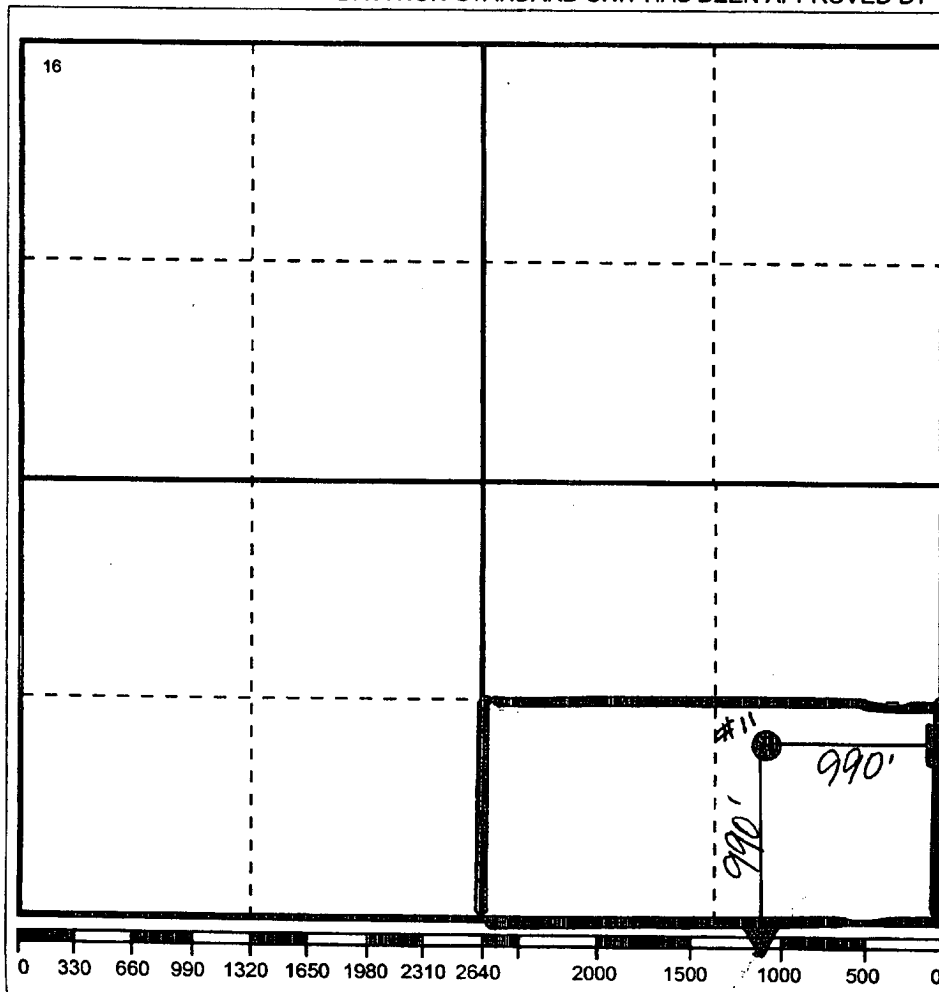
<sup>1</sup> API Number 30-025-34603	<sup>2</sup> Pool Code 47090	<sup>3</sup> Pool Name MONUMENT TUBB
<sup>4</sup> Property Code 1132	<sup>5</sup> Property Name C.H. WEIR 'B'	<sup>6</sup> Well No. 11
<sup>7</sup> OGRID Number 4323	<sup>8</sup> Operator Name CHEVRON USA INC	<sup>9</sup> Elevation 3561'

<sup>10</sup> Surface Location

UI or lot no P	Section 11	Township 20S	Range 37E	Lot.Idn	Feet From The 990	North/South Line SOUTH	Feet From The 990	East/West Line EAST	County LEA
-------------------	---------------	-----------------	--------------	---------	----------------------	---------------------------	----------------------	------------------------	---------------

<sup>11</sup> Bottom Hole Location If Different From Surface

UI or lot no.	Section	Township	Range	Lot.Idn	Feet From The	North/South Line	Feet From The	East/West Line	County
<sup>12</sup> Dedicated Acre 80	<sup>13</sup> Joint or Infill No	<sup>14</sup> Consolidation Code	<sup>15</sup> Order No.						

NO ALLOWABLE WILL BE ASSIGNED TO THIS COMPLETION UNTIL ALL INTERESTS HAVE BEEN CONSOLIDATED  
OR A NON-STANDARD UNIT HAS BEEN APPROVED BY THE DIVISION<sup>17</sup> OPERATOR CERTIFICATIONI hereby certify that the information  
contained herein is true and complete to the  
best of my knowledge and belief

Signature

Printed Name

Denise Pinkerton

Position

Regulatory Specialist

Date

1/26/2006

<sup>18</sup> SURVEYOR CERTIFICATIONI hereby certify that the well location shown  
on this plat was plotted from field notes of  
actual surveys made by me or under my  
supervision, and that the same is true and  
correct to the best of my knowledge and  
belief.

Date Surveyed

Signature & Seal of  
Professional Surveyor

Certificate No.