

District I
1625 N. French Dr., Hobbs, NM 88240
Phone: (575) 393-6161 Fax: (575) 393-0720
District II
811 S. First St., Artesia, NM 88210
Phone: (575) 748-1283 Fax: (575) 748-9720
District III
1000 Rio Brazos Road, Aztec, NM 87410
Phone: (505) 334-6178 Fax: (505) 334-6170
District IV
1220 S. St. Francis Dr., Santa Fe, NM 87505
Phone: (505) 476-3460 Fax: (505) 476-3462

State of New Mexico
Energy, Minerals & Natural Resources
Department
OIL CONSERVATION DIVISION
1220 South St. Francis Dr.
Santa Fe, NM 87505

HOBBS OCD
MAR 03 2020
RECEIVED

FORM C-102
Revised August 1, 2011
Submit one copy to appropriate
District Office

AMENDED REPORT

WELL LOCATION AND ACREAGE DEDICATION PLAT

¹ API Number 30-025-46026		² Pool Code 98158		³ Pool Name WC025 G09 S253236A; UPPER WOLFCAMP	
⁴ Property Code 325727		⁵ Property Name QUIJOTE 2 STATE COM			⁶ Well Number 706H
⁷ OGRID No. 7377		⁸ Operator Name EOG RESOURCES, INC.			⁹ Elevation 3336'

¹⁰Surface Location

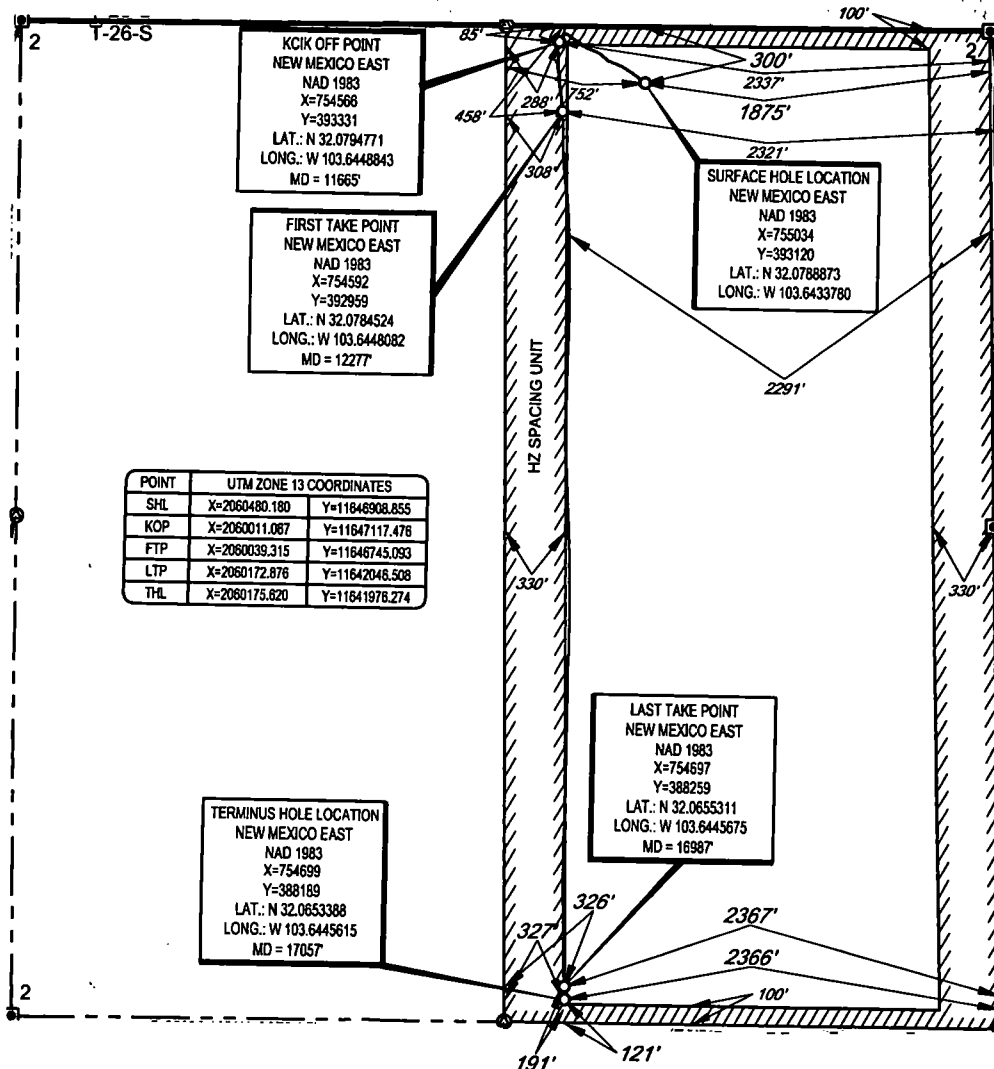
UL or lot no.	Section	Township	Range	Lot Idn	Feet from the	North/South line	Feet from the	East/West line	County
B	2	26-S	32-E	-	300'	NORTH	1875'	EAST	LEA

¹¹Bottom Hole Location If Different From Surface

UL or lot no.	Section	Township	Range	Lot Idn	Feet from the	North/South line	Feet from the	East/West line	County
0	2	26-S	32-E	-	121'	SOUTH	2366'	EAST	LEA

¹² Dedicated Acres 320.00	¹³ Joint or Infill	¹⁴ Consolidation Code	¹⁵ Order No.
--	-------------------------------	----------------------------------	-------------------------

No allowable will be assigned to this completion until all interests have been consolidated or a non-standard unit has been approved by the division.



POINT	UTM ZONE 13 COORDINATES	
SHL	X=2060480.180	Y=11846908.855
KOP	X=2060011.087	Y=11847117.478
FTP	X=2060039.315	Y=11846745.093
LTP	X=2060172.876	Y=11842046.508
THL	X=2060175.820	Y=11841978.274

¹⁷OPERATOR CERTIFICATION
I hereby certify that the information contained herein is true and complete to the best of my knowledge and belief, and that this organization either owns a working interest or unleased mineral interest in the land including the proposed bottom hole location or has a right to drill this well at this location pursuant to a contract with an owner of such a mineral or working interest, or to a voluntary pooling agreement or a compulsory pooling order heretofore entered by the division.

Kay Maddox 02/27/2020
Signature Date

Kay Maddox
Printed Name

Kay_Maddox@eogresources.com
E-mail Address

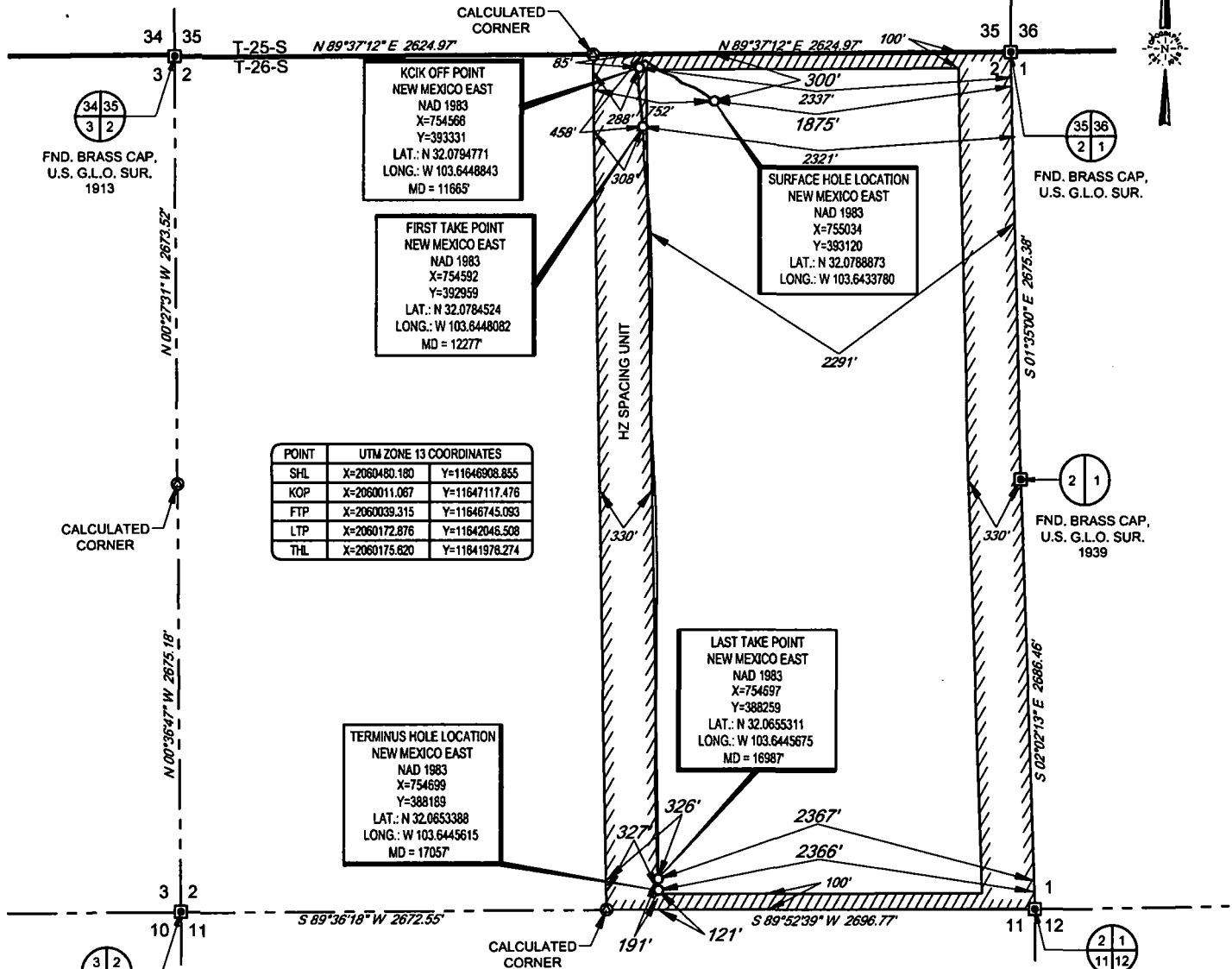
¹⁸SURVEYOR CERTIFICATION
I hereby certify that the well location shown on this plat was plotted from field notes of actual surveys made by me or under my supervision, and that the same is true to the best of my belief.

03/26/2019
Date of Survey
Signature and Seal of Professional Surveyor
Ramon M. Anguiz
NEW MEXICO
24508
PROFESSIONAL SURVEYOR
Certificate Number 4

SCALE: 1" = 1000'

0' 500' 1000'

SECTION 2, TOWNSHIP 26-S, RANGE 32-E, N.M.P.M.
LEA COUNTY, NEW MEXICO



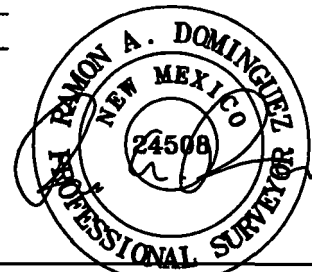
POINT	UTM ZONE 13 COORDINATES	
SHL	X=2060480.180	Y=11646908.855
KOP	X=2060011.067	Y=11647117.476
FTP	X=2060039.315	Y=11646745.093
LTP	X=2060172.876	Y=11642046.508
THL	X=2060175.820	Y=11641978.274

LEASE NAME & WELL NO.: QUIJOTE 2 STATE COM #706H
 SECTION 2 TWP 26-S RGE 32-E SURVEY N.M.P.M.
 COUNTY LEA STATE NM ELEVATION 3330'
 DESCRIPTION 300' FNL & 1875' FEL



TOPOGRAPHIC
LOYALTY INNOVATION LEGACY

1400 EVERMAN PARKWAY, Ste. 146 • FT. WORTH, TEXAS 76140
 TELEPHONE: (817) 744-7512 • FAX (817) 744-7554
 2903 NORTH BIG SPRING • MIDLAND, TEXAS 79705
 TELEPHONE: (432) 682-1853 OR (800) 767-1653 • FAX (432) 682-1743
 WWW.TOPOGRAPHIC.COM



Ramon A. Dominguez, P.S. No. 24508
 DECEMBER 31, 2019



QUIJOTE 2 STATE COM
#706H
AS-COMPLETED

DATE: 12/31/2019

FILE: AD QUIJOTE_2_STATE_COM_706H

DRAWN BY: TRG

SHEET: 1 OF 1

REVISION:	

NOTES:

1. ORIGINAL DOCUMENT SIZE: 8.5" X 11"
2. ALL BEARINGS, DISTANCES, AND COORDINATE VALUES CONTAINED HEREIN ARE GRID BASED UPON THE NEW MEXICO COORDINATE SYSTEM OF 1983, EAST ZONE, U.S. SURVEY FEET.
3. THIS WELL LOCATION SHOWN HEREON HAS BEEN SURVEYED ON THE GROUND UNDER MY SUPERVISION AND PREPARED ACCORDING TO THE EVIDENCE FOUND AT THE TIME OF SURVEY, AND DATA PROVIDED BY EOG RESOURCES, INC. THIS CERTIFICATION IS MADE AND LIMITED TO THOSE PERSONS OR ENTITIES SHOWN ON THE FACE OF THIS PLAT AND IS NON-TRANSFERABLE. THIS SURVEY IS CERTIFIED FOR THIS TRANSACTION ONLY.

Intent As Drilled

API # 30-025-46026			
Operator Name: EOG RESOURCES, INC		Property Name: QUIJOTE 2 STATE COM	Well Number 706H

Kick Off Point (KOP)

UL	Section	Township	Range	Lot	Feet	From N/S	Feet	From E/W	County
B	2	26S	32E		85	NORTH	2337	EAST	LEA
Latitude 32.0794771					Longitude 103.6448843				NAD 1983

First Take Point (FTP)

UL	Section	Township	Range	Lot	Feet	From N/S	Feet	From E/W	County
B	2	26S	32E		458	NORTH	2321	EAST	LEA
Latitude 32.0784524					Longitude 103.6448082				NAD 1983

Last Take Point (LTP)

UL	Section	Township	Range	Lot	Feet	From N/S	Feet	From E/W	County
O	2	26S	32E		191	SOUTH	2367	EAST	LEA
Latitude 32.0655311					Longitude 103.6445675				NAD 1983

Is this well the defining well for the Horizontal Spacing Unit?

Is this well an infill well?

If infill is yes please provide API if available, Operator Name and well number for Defining well for Horizontal Spacing Unit.

API # 30-025-46028			
Operator Name: EOG RESOURCES, INC		Property Name: QUIJOTE 2 STATE COM	Well Number #713H

KZ 06/29/2018