

State of New Mexico

Energy, Minerals and Natural Resources Department

DISTRICT I  
1825 N. FRENCH DR., BOHRS, NM 88240

DISTRICT II  
1201 W. GRAND AVENUE, ARTESIA, NM 88210

DISTRICT III  
1000 Rio Brazos Rd., Aztec, NM 87410

OIL CONSERVATION DIVISION  
1220 SOUTH ST. FRANCIS DR.  
Santa Fe, New Mexico 87505

Form C-102  
Revised October 12, 2005  
Submit to Appropriate District Office  
State Lease - 4 Copies  
Fee Lease - 3 Copies

DISTRICT IV  
1220 S. ST. FRANCIS DR., SANTA FE, NM 87505

WELL LOCATION AND ACREAGE DEDICATION PLAT

AMENDED REPORT

API Number 30-025-06127	Pool Code 76480	Pool Name Eumont (Y-7R-Q) Gas
Property Code 3021406	Property Name HANSEN STATE	Well Number 4
OGRID No. 237788	Operator Name PLANTATION OPERATING, LLC	Elevation

Surface Location

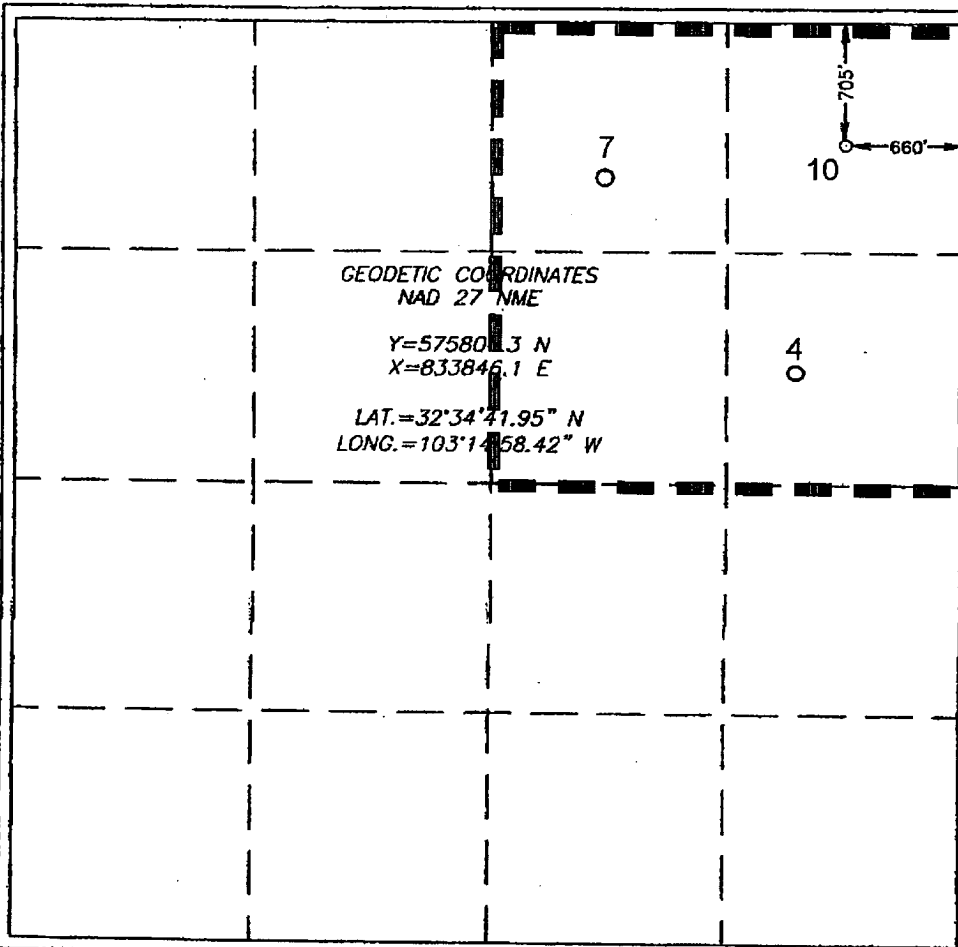
UL or lot No.	Section	Township	Range	Lot Idn	Feet from the	North/South line	Feet from the	East/West line	County
H	16	20-S	37-E		1980	NORTH	990	EAST	LEA

Bottom Hole Location If Different From Surface

UL or lot No.	Section	Township	Range	Lot Idn	Feet from the	North/South line	Feet from the	East/West line	County

Dedicated Acres 160	Joint or Infill Y	Consolidation Code	Order No. NSP-194 (10/22/95), NSP-194-A (5/27/98) & NSP-194-A (4/28/04)
------------------------	----------------------	--------------------	--

NO ALLOWABLE WILL BE ASSIGNED TO THIS COMPLETION UNTIL ALL INTERESTS HAVE BEEN CONSOLIDATED OR A NON-STANDARD UNIT HAS BEEN APPROVED BY THE DIVISION



**OPERATOR CERTIFICATION**

I hereby certify that the information herein is true and complete to the best of my knowledge and belief, and that this organization either owns a working interest or unleased mineral interest in the land including the proposed bottom hole location or has a right to drill this well at this location pursuant to a contract with an owner of such mineral or working interest, or to a voluntary pooling agreement or a compulsory pooling order heretofore entered by the Division.

*John Allred* 6/22/06  
Signature Date  
John Allred  
Printed Name

**SURVEYOR CERTIFICATION**

I hereby certify that the well location shown on this plat was plotted from field notes of actual surveys made by me or under my supervision, and that the same is true and correct to the best of my belief.

MARCH 14, 2006

Date Surveyed MR  
Signature: GARY EIDSON  
Professional Surveyor  
NEW MEXICO  
66.17.05065  
Certificate No. GARY EIDSON 12841