

# State of New Mexico

Energy, Minerals and Natural Resources Department

## DISTRICT I

1625 N. FRENCH DR., BOBBS, NM 86240

## DISTRICT II

1301 W. GRAND AVENUE, ARTESIA, NM 88210

## DISTRICT III

1000 Rio Brazos Rd., Aztec, NM 87410

## DISTRICT IV

1220 S. ST. FRANCIS DR., SANTA FE, NM 87505

## OIL CONSERVATION DIVISION

1220 SOUTH ST. FRANCIS DR.

Santa Fe, New Mexico 87505

Form C-102

Revised JUNE 10, 2003

Submit to Appropriate District Office

State Lease - 4 Copies

Fee Lease - 3 Copies

## WELL LOCATION AND ACREAGE DEDICATION PLAT

☐ AMENDED REPORT

API Number 30-025-37875		Pool Code 22900	Pool Name Eunice; Blinebry - Tubb - Drinkard, North
Property Code 22503	Property Name NEDU		Well Number 242
OGRID No. 00873	Operator Name APACHE CORPORATION		Elevation 3465'

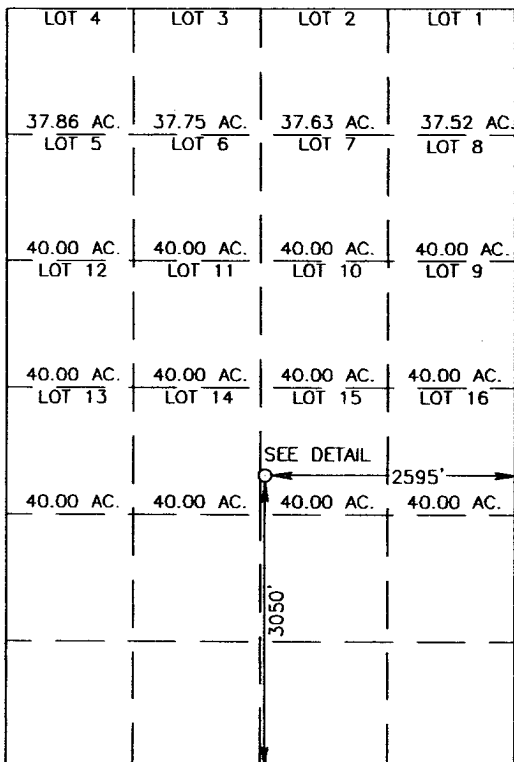
### Surface Location

UL or lot No.	Section	Township	Range	Lot Idn	Feet from the	North/South line	Feet from the	East/West line	County
15	3	21-S	37-E		3050	SOUTH	2595	EAST	LEA

### Bottom Hole Location If Different From Surface

UL or lot No.	Section	Township	Range	Lot Idn	Feet from the	North/South line	Feet from the	East/West line	County
Dedicated Acres 40	Joint or Infill	Consolidation Code	Order No.						

NO ALLOWABLE WILL BE ASSIGNED TO THIS COMPLETION UNTIL ALL INTERESTS HAVE BEEN CONSOLIDATED  
OR A NON-STANDARD UNIT HAS BEEN APPROVED BY THE DIVISION

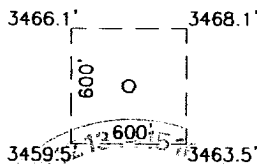


GEODETIC COORDINATES  
NAD 27 NME

Y=550893.7 N  
X=864694.1 E

LAT.=32°30'32.23" N  
LONG.=103°09'01.21" W

### DETAIL



SCALE - 1"=2000'

### OPERATOR CERTIFICATION

I hereby certify the the information  
contained herein is true and complete to the  
best of my knowledge and belief.

*Elaine Linton*  
Signature

Elaine Linton  
Printed Name

Engineering Tech.  
Title

8/28/2006  
Date

### SURVEYOR CERTIFICATION

I hereby certify that the well location shown  
on this plat was plotted from field notes of  
actual surveys made by me or under my  
supervision, and that the same is true and  
correct to the best of my belief.

MAY 31, 2005

Date Surveyed  
Signature & Seal of Professional Surveyor

GARY E. EDSON  
NEW MEXICO  
REGISTERED PROFESSIONAL SURVEYOR  
05.11.0817  
Certificate No. GARY E. EDSON 12641

GW