

DISTRICT I
1625 N. PERENCH DR., HOBBS, NM 88240

State of New Mexico
Energy, Minerals and Natural Resources Department

OK

Form C-102

DISTRICT II
1301 W. GRAND AVENUE, ARTESIA, NM 88210

OIL CONSERVATION DIVISION
1220 SOUTH ST. FRANCIS DR.
Santa Fe, New Mexico 87505

Revised October 12, 2005
Submit to Appropriate District Office
State Lease - 4 Copies
Fee Lease - 3 Copies

DISTRICT III
1000 Rio Brazos Rd., Aztec, NM 87410

DISTRICT IV
1220 S. ST. FRANCIS DR., SANTA FE, NM 87505

WELL LOCATION AND ACREAGE DEDICATION PLAT

☐ AMENDED REPORT

API Number 30-025-38219	Pool Code 19190	Pool Name Drinkard
Property Code 26470	Property Name H. CORRIGAN	Well Number 20
OGRID No. 873	Operator Name APACHE CORPORATION	Elevation 3437'

Surface Location

UL or lot No.	Section	Township	Range	Lot Idn	Feet from the	North/South line	Feet from the	East/West line	County
H	4	22-S	37-E		1480	NORTH	330	EAST	LEA

Bottom Hole Location If Different From Surface

UL or lot No.	Section	Township	Range	Lot Idn	Feet from the	North/South line	Feet from the	East/West line	County
Dedicated Acres 40		Joint or Infill	Consolidation Code		Order No.				

NO ALLOWABLE WILL BE ASSIGNED TO THIS COMPLETION UNTIL ALL INTERESTS HAVE BEEN CONSOLIDATED
OR A NON-STANDARD UNIT HAS BEEN APPROVED BY THE DIVISION

LOT 4	LOT 3	LOT 2	LOT 1
39.91 AC	39.86 AC	39.80 AC	39.75 AC
GEODETIC COORDINATES NAD 27 NME Y=519924.9 N X=862031.7 E LAT.=32.423923" N LONG.=103.160074" W LAT.=32°25'26.12" N LONG.=103°09'36.27" W			
1480' 330'			

OPERATOR CERTIFICATION

I hereby certify that the information herein is true and complete to the best of my knowledge and belief, and that this organization either owns a working interest or unleased mineral interest in the land including the proposed bottom hole location or has a right to drill this well at this location pursuant to a contract with an owner of such mineral or working interest, or to a voluntary pooling agreement or a compulsory pooling order heretofore entered by the division.

Lana Williams 12/19/06
Signature Date
Lana Williams
Printed Name

SURVEYOR CERTIFICATION

I hereby certify that the well location shown on this plat was plotted from field notes of actual surveys made by me or under my supervision, and that the same is true and correct to the best of my belief.

JUNE 13, 2006

Date Surveyed MR
Signature & Seal of Professional Surveyor
Ronald J. Edson 6/22/06
06.11.0952
Certificate No. GARY EIDSON 12641
RONALD J. EIDSON 3239

CEL

DISTRICT I
1025 N. FRANKLIN DR., BOBBS, NM 88240

DISTRICT II
1301 W. GRAND AVENUE, ARTESIA, NM 88210

DISTRICT III
1000 Rio Brazos Rd., Aztec, NM 87410

DISTRICT IV
1220 S. ST. FRANCIS DR., SANTA FE, NM 87505

State of New Mexico
Energy, Minerals and Natural Resources Department

OIL CONSERVATION DIVISION
1220 SOUTH ST. FRANCIS DR.
Santa Fe, New Mexico 87505

Form C-102
Revised October 12, 2005
Submit to Appropriate District Office
State Lease - 4 Copies
Fee Lease - 3 Copies

WELL LOCATION AND ACREAGE DEDICATION PLAT

☐ AMENDED REPORT

API Number 30-025-38219	Pool Code 60240	Pool Name Tubb 846 <8:1>
Property Code 26470	Property Name H. CORRIGAN	Well Number 20
GRID No. 873	Operator Name APACHE CORPORATION	Elevation 3437'

Surface Location

UL or lot No.	Section	Township	Range	Lot Idn	Feet from the	North/South line	Feet from the	East/West line	County
H	4	22-S	37-E		1480	NORTH	330	EAST	LEA

Bottom Hole Location If Different From Surface

UL or lot No.	Section	Township	Range	Lot Idn	Feet from the	North/South line	Feet from the	East/West line	County
Dedicated Acres 40	Joint or Infill	Consolidation Code	Order No.						

NO ALLOWABLE WILL BE ASSIGNED TO THIS COMPLETION UNTIL ALL INTERESTS HAVE BEEN CONSOLIDATED
OR A NON-STANDARD UNIT HAS BEEN APPROVED BY THE DIVISION

LOT 4	LOT 3	LOT 2	LOT 1
39.91 AC	39.86 AC	39.80 AC	39.75 AC
GEODETIC COORDINATES NAD 83/NME Y=519924.9 N X=862031.7 E LAT.=32.423923" N LONG.=103.160074" W LAT.=32°25'26.12" N LONG.=103°09'36.27" W			
1480' 330'			
OPERATOR CERTIFICATION I hereby certify that the information herein is true and complete to the best of my knowledge and belief, and that this organization either owns a working interest or unleased mineral interest in the land including the proposed bottom hole location or has a right to drill this well at this location pursuant to a contract with an owner of such mineral or working interest, or to a voluntary pooling agreement or a compulsory pooling order heretofore entered by the division. Signature: <u>Lana Williams</u> Date: <u>12/19/06</u> Printed Name: <u>Lana Williams</u>			
SURVEYOR CERTIFICATION I hereby certify that the well location shown on this plat was plotted from field notes of actual surveys made by me or under my supervision, and that the same is true and correct to the best of my belief. JUNE 13, 2006 Date Surveyed: _____ MR Signature & Seal of Professional Surveyor: <u>Ronald F. Edson</u> 6/22/06 06.11.0952 Certificate No. GARY EDSON 12841 RONALD F. EDSON 3239			

DISTRICT I
1625 N. FRENCH DR., HOBBES, NM 88240

DISTRICT II
1301 W. GRAND AVENUE, ARTESIA, NM 88210

DISTRICT III
1000 Rio Brazos Rd., Aztec, NM 87410

DISTRICT IV
1220 S. ST. FRANCIS DR., SANTA FE, NM 87505

State of New Mexico

Energy, Minerals and Natural Resources Department

OIL CONSERVATION DIVISION
1220 SOUTH ST. FRANCIS DR.
Santa Fe, New Mexico 87505

Form C-102

Revised October 12, 2005
Submit to Appropriate District Office
State Lease - 4 Copies
Fee Lease - 3 Copies

WELL LOCATION AND ACREAGE DEDICATION PLAT

☐ AMENDED REPORT

API Number 30-025-38219	Pool Code 06660	Pool Name Blinebry #2G	<2:1>
Property Code 26470	Property Name H. CORRIGAN		Well Number 20
OGRID No. 873	Operator Name APACHE CORPORATION		Elevation 3437'

Surface Location

UL or lot No.	Section	Township	Range	Lot Idn	Feet from the	North/South line	Feet from the	East/West line	County
H	4	22-S	37-E		1480	NORTH	330	EAST	LEA

Bottom Hole Location If Different From Surface

UL or lot No.	Section	Township	Range	Lot Idn	Feet from the	North/South line	Feet from the	East/West line	County

Dedicated Acres	Joint or Infill	Consolidation Code	Order No.
40			

NO ALLOWABLE WILL BE ASSIGNED TO THIS COMPLETION UNTIL ALL INTERESTS HAVE BEEN CONSOLIDATED
OR A NON-STANDARD UNIT HAS BEEN APPROVED BY THE DIVISION

LOT 4	LOT 3	LOT 2	LOT 1
39.91 AC	39.86 AC	39.80 AC	39.75 AC
GEODETIC COORDINATES NAD 27 NME Y=519924.9 N X=862031.7 E LAT.=32°25'26.12" N LONG.=103°09'36.27" W			
OPERATOR CERTIFICATION I hereby certify that the information herein is true and complete to the best of my knowledge and belief, and that this organization either owns a working interest or unleased mineral interest in the land including the proposed bottom hole location or has a right to drill this well at this location pursuant to a contract with an owner of such mineral or working interest, or to a voluntary pooling agreement or a compulsory pooling order heretofore entered by the division. Signature: <u>Lana Williams</u> Date: <u>12/19/06</u> Printed Name: <u>Lana Williams</u>			
SURVEYOR CERTIFICATION I hereby certify that the well location shown on this plat was plotted from field notes of actual surveys made by me or under my supervision, and that the same is true and correct to the best of my belief. JUNE 13, 2006 Date Surveyed: _____ MR Signature & Seal of Professional Surveyor: <u>Ronald J. Edson</u> 6/22/06 Certificate No. GARY EIDSON 12841 RONALD J. EIDSON 3239			

DISTRICT I

1025 N. FRENCH DR., HOBBS, NM 88240

DISTRICT II

1301 W. GRAND AVENUE, ARTESIA, NM 88210

DISTRICT III

1000 Rio Brazos Rd., Aztec, NM 87410

DISTRICT IV

1220 S. ST. FRANCIS DR., SANTA FE, NM 87505

State of New Mexico

Energy, Minerals and Natural Resources Department

OIL CONSERVATION DIVISION
1220 SOUTH ST. FRANCIS DR.
Santa Fe, New Mexico 87505

Form C-102

Revised October 12, 2005

Submit to Appropriate District Office

State Lease - 4 Copies

Fee Lease - 3 Copies

WELL LOCATION AND ACREAGE DEDICATION PLAT

☐ AMENDED REPORT

API Number	Pool Code	Pool Name
Property Code	Property Name H. CORRIGAN	Well Number 20
OGRID No.	Operator Name APACHE CORPORATION	Elevation 3437'

Surface Location

UL or lot No.	Section	Township	Range	Lot Idn	Feet from the	North/South line	Feet from the	East/West line	County
H	4	22-S	37-E		1480	NORTH	330	EAST	LEA

Bottom Hole Location If Different From Surface

UL or lot No.	Section	Township	Range	Lot Idn	Feet from the	North/South line	Feet from the	East/West line	County
Dedicated Acres	Joint or Infill	Consolidation Code	Order No.						

NO ALLOWABLE WILL BE ASSIGNED TO THIS COMPLETION UNTIL ALL INTERESTS HAVE BEEN CONSOLIDATED
OR A NON-STANDARD UNIT HAS BEEN APPROVED BY THE DIVISION

LOT 4	LOT 3	LOT 2	LOT 1
39.91 AC	39.86 AC	39.80 AC	39.75 AC
		CORRIGAN #13	
		CORRIGAN #17	
		H. CORRIGAN #15	
		CORRIGAN #7	

OPERATOR CERTIFICATION

I hereby certify that the information herein is true and complete to the best of my knowledge and belief, and that this organization either owns a working interest or unleased mineral interest in the land including the proposed bottom hole location or has a right to drill this well at this location pursuant to a contract with an owner of such mineral or working interest, or to a voluntary pooling agreement or a compulsory pooling order heretofore entered by the division.

Lana L. Williams 12/14/06
Signature Date
Lana Williams
Printed Name

SURVEYOR CERTIFICATION

I hereby certify that the well location shown on this plat was plotted from field notes of actual surveys made by me or under my supervision, and that the same is true and correct to the best of my belief.

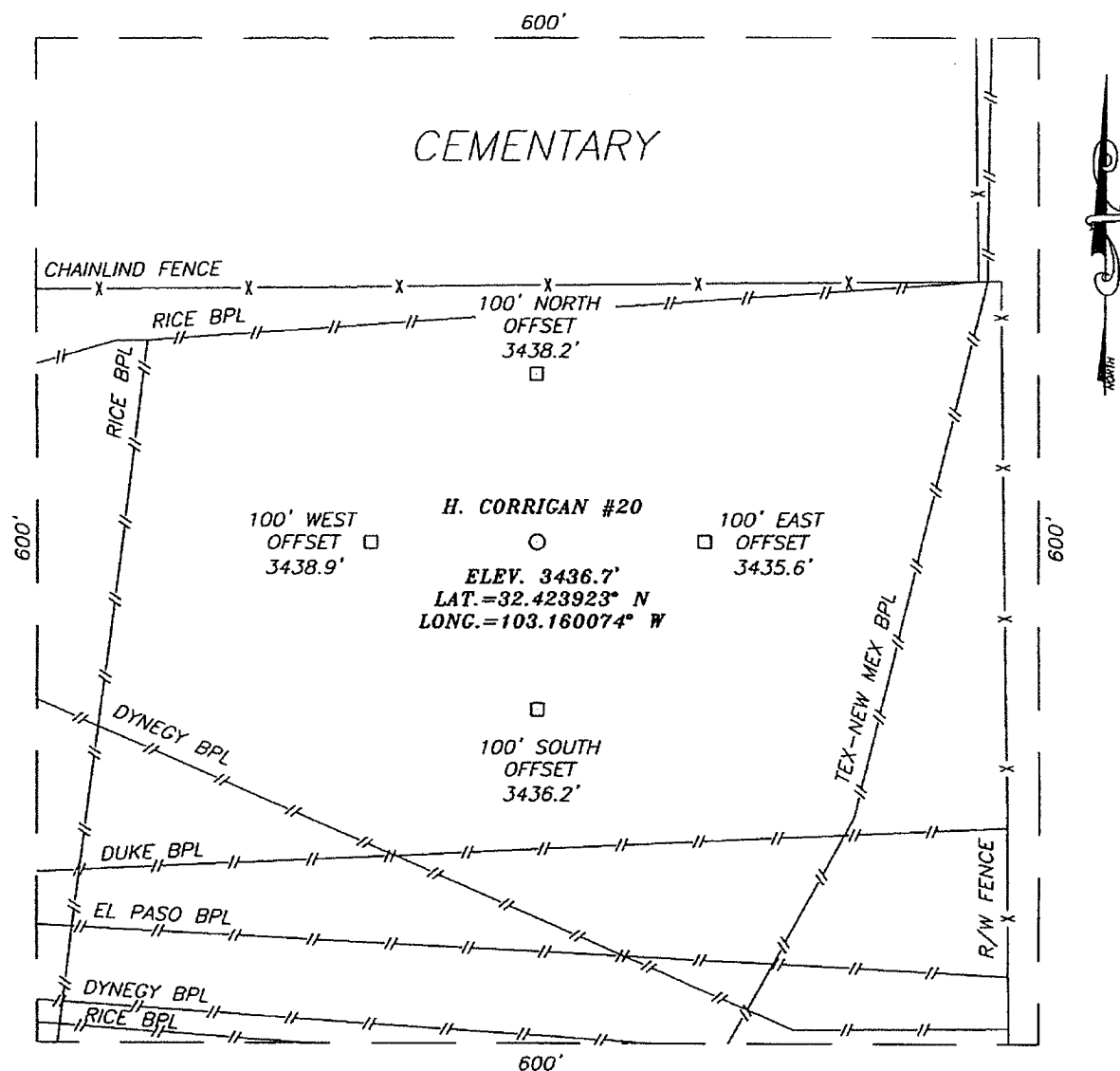
JUNE 13, 2006

Date Surveyed MR
Signature & Seal of Professional Surveyor

06.11.0952

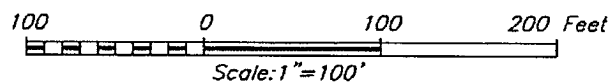
Certificate No. GARY EIDSON 12641
RONALD J. EIDSON 3239

SECTION 4, TOWNSHIP 22 SOUTH, RANGE 37 EAST, N.M.P.M.,
LEA COUNTY, NEW MEXICO



DIRECTIONS TO LOCATION

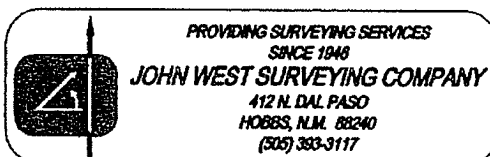
FROM THE INTERSECTION OF ST. HWY. #207 AND CO. RD. E-23 (TEXAS AVE.), GO SOUTH ON ST. HWY. #207 APPROX. 1.0 MILE. TURN RIGHT (THROUGH CATTLE GUARD) AND GO WEST APPROX. 0.1 MILE. TURN RIGHT AND GO NORTH APPROX. 0.1 MILE TO CORRIGAN #10. FOLLOW PIPELINE R/W APPROX. 0.1 MILE NORTH. THIS LOCATION IS APPROX. 250 FEET EAST.



APACHE CORPORATION

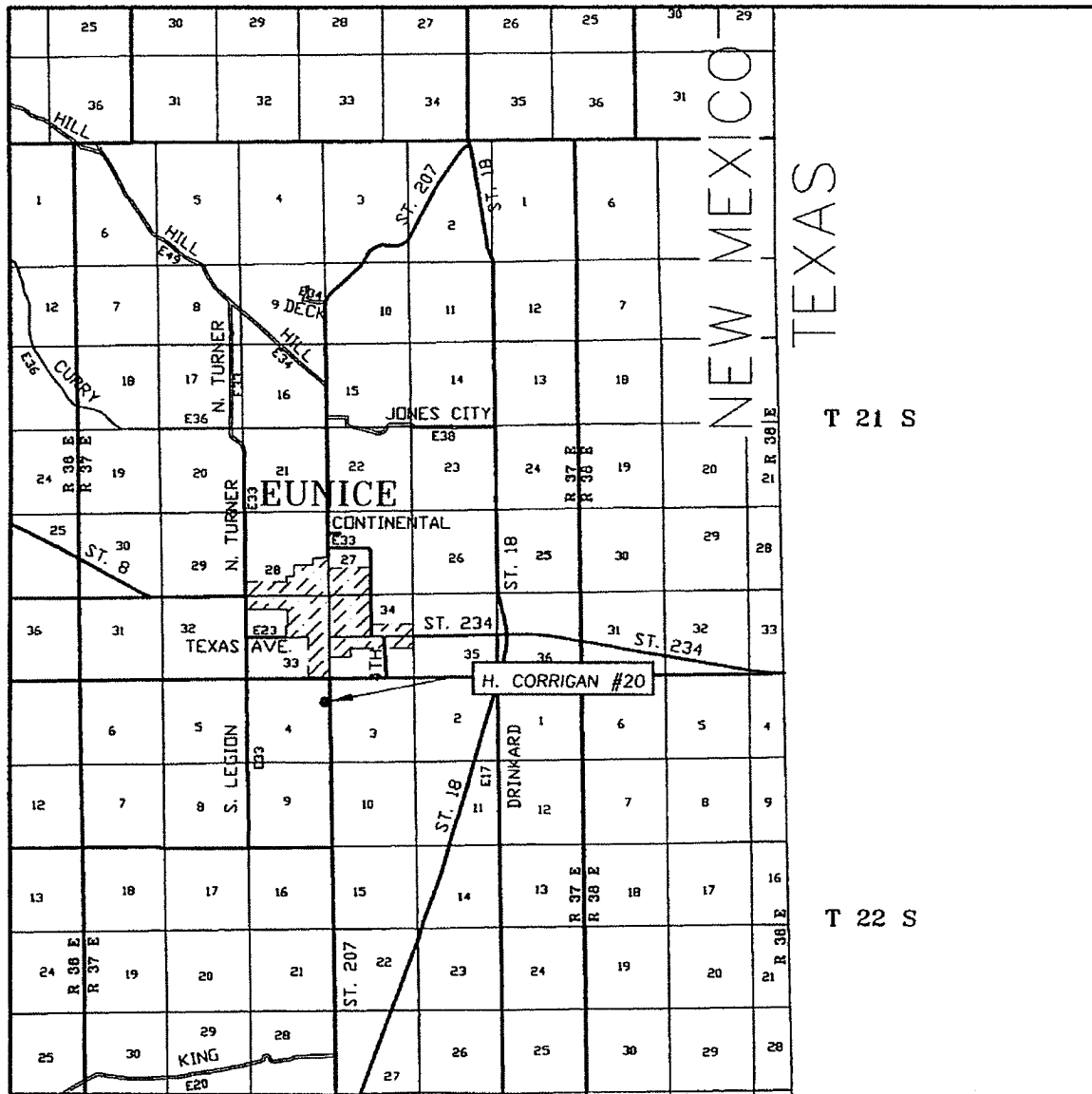
H. CORRIGAN #20
LOCATED 1480 FEET FROM THE NORTH LINE
AND 330 FEET FROM THE EAST LINE OF SECTION 4,
TOWNSHIP 22 SOUTH, RANGE 37 EAST, N.M.P.M.,
LEA COUNTY, NEW MEXICO.

Survey Date: 06/14/06	Sheet 1 of 1 Sheets
W.O. Number: 06.11.0952	Dr By: M.R.
Date: 06/21/06	Rev 1: N/A
Disk: CD#6	Scale: 1"=100'



PROVIDING SURVEYING SERVICES
SINCE 1948
JOHN WEST SURVEYING COMPANY
412 N. DAL PASO
HOBBS, N.M. 88240
(505) 383-3117

VICINITY MAP



SCALE: 1" = 2 MILES

SEC. 4 TWP. 22-S. RGE. 37-E

SURVEY N.M.P.M.

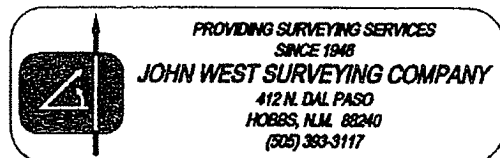
COUNTY LEA STATE NEW MEXICO

DESCRIPTION 1480' FNL & 330' FEL

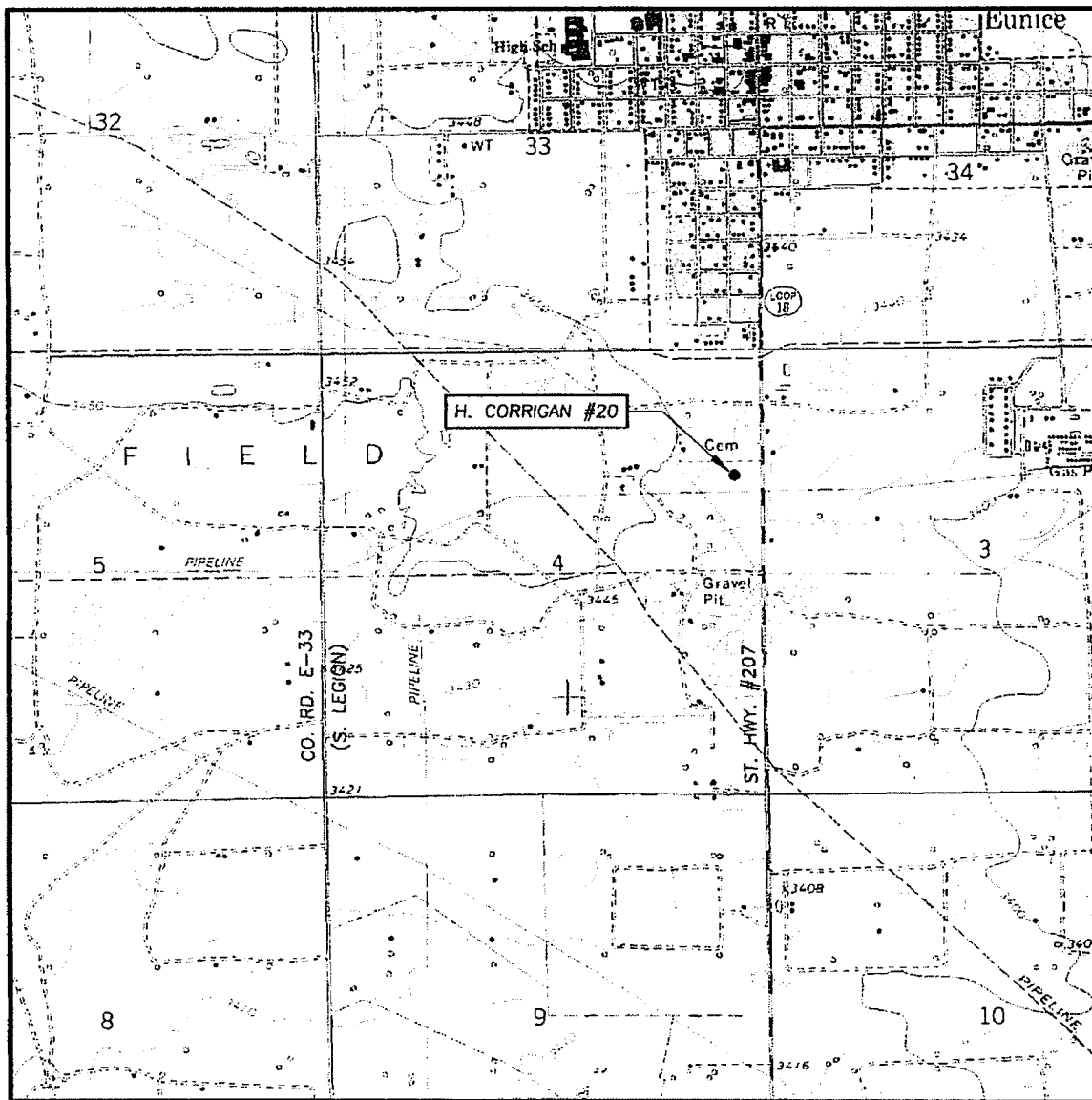
ELEVATION 3437'

OPERATOR APACHE CORPORATION

LEASE H. CORRIGAN



LOCATION VERIFICATION MAP



SCALE: 1" = 2000'

CONTOUR INTERVAL:
EUNICE, N.M. - 10'

SEC. 4 TWP. 22-S RGE. 37-E

SURVEY N.M.P.M.

COUNTY LEA STATE NEW MEXICO

DESCRIPTION 1480' FNL & 330' FEL

ELEVATION 3437'

OPERATOR APACHE CORPORATION

LEASE H. CORRIGAN

U.S.G.S. TOPOGRAPHIC MAP

EUNICE, N.M.

