

✓OK

DISTRICT I
1625 N. FRENCH DR., HOODES, NM 88240

State of New Mexico
Energy, Minerals and Natural Resources Department

Form C-102

DISTRICT II
1301 W. GRAND AVENUE, ARTESIA, NM 88210

OIL CONSERVATION DIVISION
1220 SOUTH ST. FRANCIS DR.
Santa Fe, New Mexico 87505

Revised October 12, 2005
Submit to Appropriate District Office
State Lease - 4 Copies
Fee Lease - 3 Copies

DISTRICT III
1000 Rio Brazos Rd., Aztec, NM 87410

DISTRICT IV
1220 S. ST. FRANCIS DR., SANTA FE, NM 87505

WELL LOCATION AND ACREAGE DEDICATION PLAT

☐ AMENDED REPORT

API Number 30-025-38684		Pool Code 06660	Pool Name Blinebury Oil
Property Code 26469		Property Name GILL DEEP	
OGRID No. 873		Operator Name APACHE CORPORATION	
		Well Number 6	Elevation 3469'

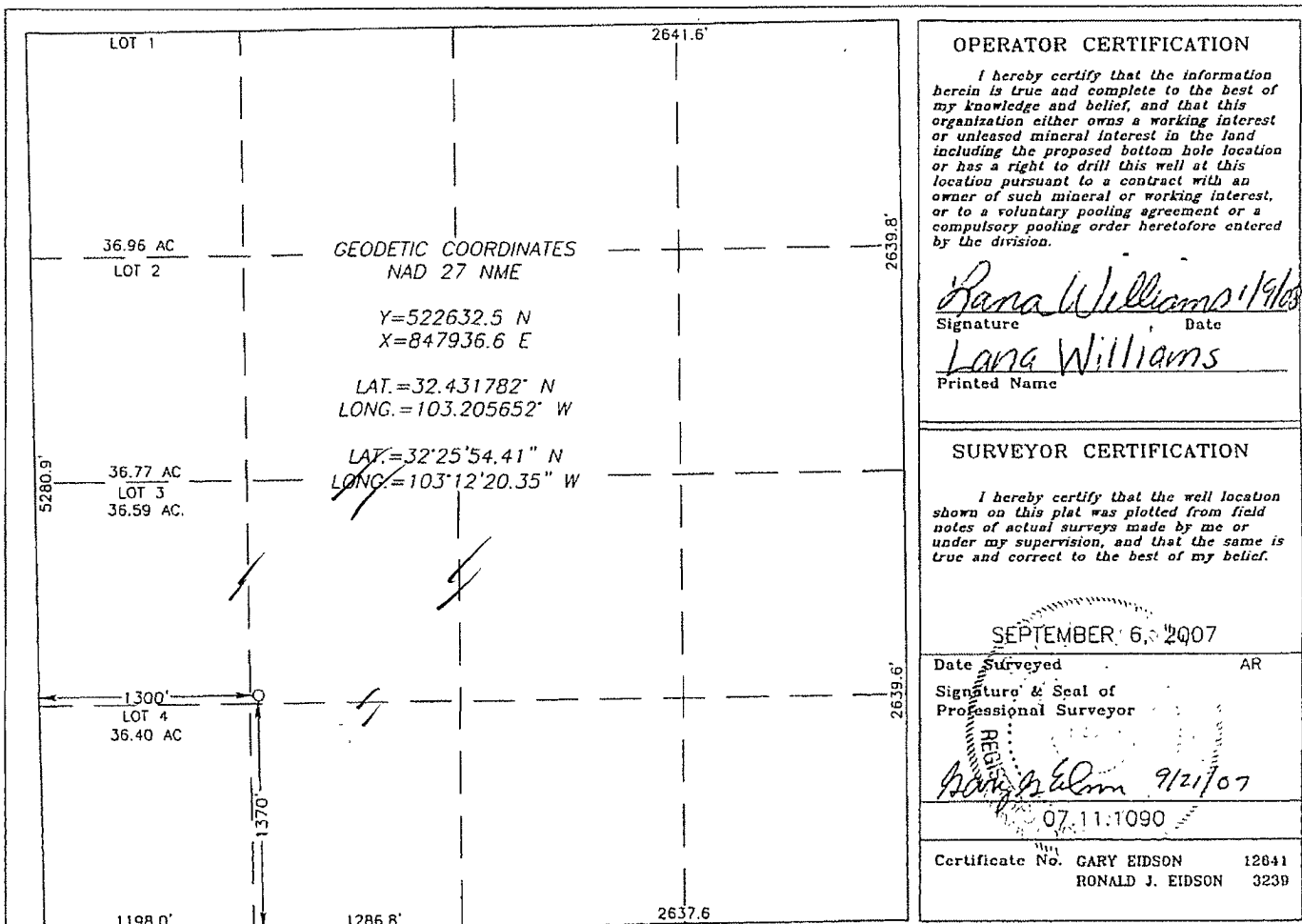
Surface Location

UL or lot No.	Section	Township	Range	Lot Idn	Feet from the	North/South line	Feet from the	East/West line	County
K	31	21-S	37-E		1370	SOUTH	1300	WEST	LEA

Bottom Hole Location If Different From Surface

UL or lot No.	Section	Township	Range	Lot Idn	Feet from the	North/South line	Feet from the	East/West line	County
Dedicated Acres 40		Joint or Infill	Consolidation Code	Order No. NSL-5516					

NO ALLOWABLE WILL BE ASSIGNED TO THIS COMPLETION UNTIL ALL INTERESTS HAVE BEEN CONSOLIDATED
OR A NON-STANDARD UNIT HAS BEEN APPROVED BY THE DIVISION



DISTRICT I
1025 N. FRENCH DR., HOBBS, NM 88240

DISTRICT II
1301 W. GRAND AVENUE, ARTESIA, NM 88210

DISTRICT III
1000 Rio Brazos Rd., Aztec, NM 87410

DISTRICT IV
1220 S. ST. FRANCIS DR., SANTA FE, NM 87505

State of New Mexico
Energy, Minerals and Natural Resources Department

OIL CONSERVATION DIVISION
1220 SOUTH ST. FRANCIS DR.
Santa Fe, New Mexico 87505

Form C-102
Revised October 12, 2005
Submit to Appropriate District Office
State Lease - 4 Copies
Fee Lease - 3 Copies

WELL LOCATION AND ACREAGE DEDICATION PLAT

☐ AMENDED REPORT

API Number 30-025-38684	Pool Code	Pool Name
Property Code 26464	Property Name GILL DEEP	Well Number 6
OGRID No. 873	Operator Name APACHE CORPORATION	Elevation 3469'

Surface Location

UL or lot No.	Section	Township	Range	Lot Idn	Feet from the	North/South line	Feet from the	East/West line	County
K	31	21-S	37-E		1370	SOUTH	1300	WEST	LEA

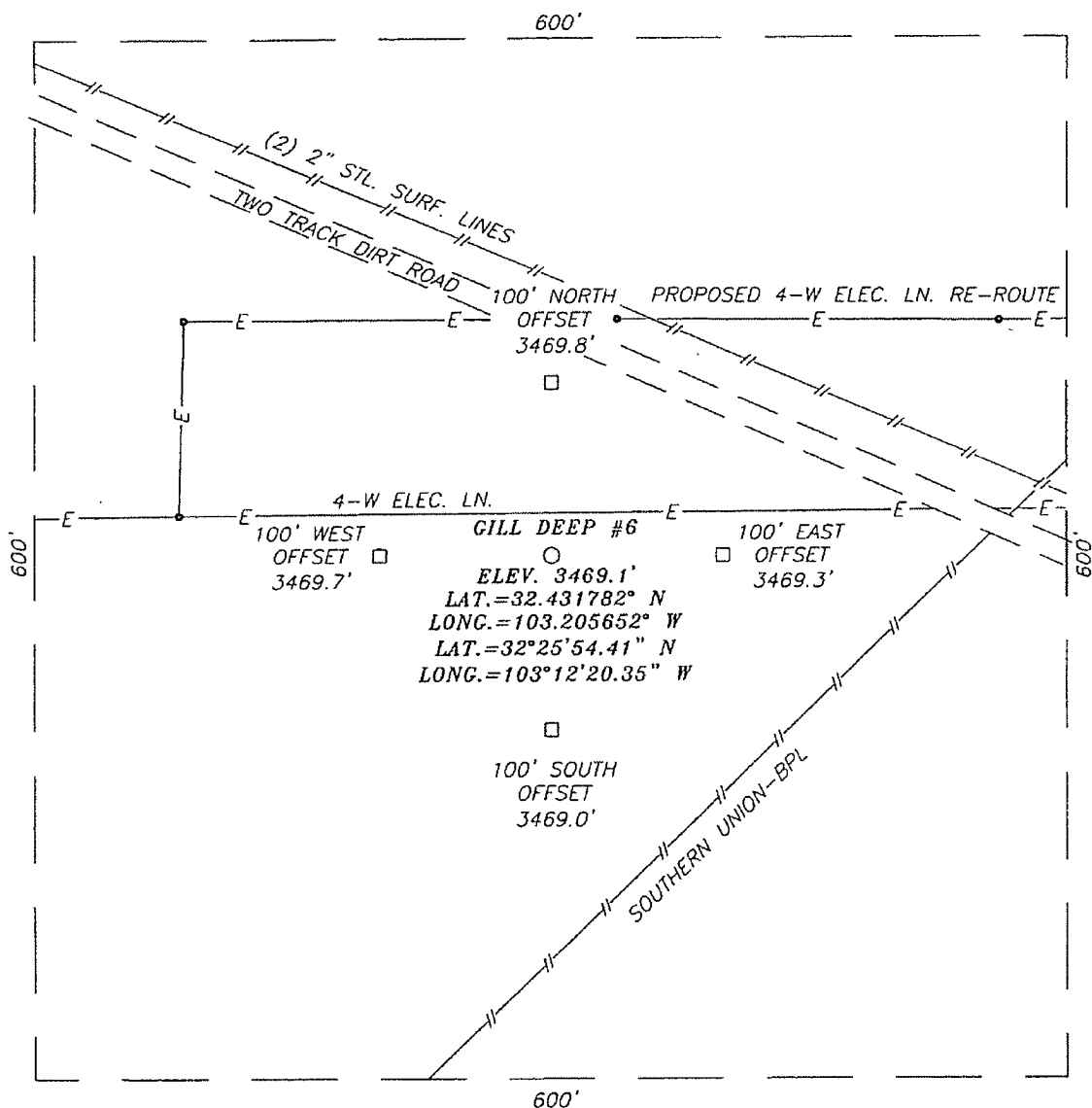
Bottom Hole Location If Different From Surface

UL or lot No.	Section	Township	Range	Lot Idn	Feet from the	North/South line	Feet from the	East/West line	County
Dedicated Acres		Joint or Infill	Consolidation Code		Order No.				

NO ALLOWABLE WILL BE ASSIGNED TO THIS COMPLETION UNTIL ALL INTERESTS HAVE BEEN CONSOLIDATED
OR A NON-STANDARD UNIT HAS BEEN APPROVED BY THE DIVISION

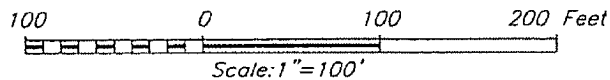
	<p>OPERATOR CERTIFICATION</p> <p>I hereby certify that the information herein is true and complete to the best of my knowledge and belief, and that this organization either owns a working interest or unleased mineral interest in the land including the proposed bottom hole location or has a right to drill this well at this location pursuant to a contract with an owner of such mineral or working interest, or to a voluntary pooling agreement or a compulsory pooling order heretofore entered by the division.</p> <p><i>Lana Williams</i> 10/9/08 Signature Date</p> <p>Lana Williams Printed Name</p>
	<p>SURVEYOR CERTIFICATION</p> <p>I hereby certify that the well location shown on this plat was plotted from field notes of actual surveys made by me or under my supervision, and that the same is true and correct to the best of my belief.</p>
	<p>SEPTEMBER 6, 2007</p> <p>Date Surveyed AR</p> <p>Signature & Seal of Professional Surveyor</p>
	<p>07.11.1090</p> <p>Certificate No. GARY EIDSON 12641 RONALD J. EIDSON 3230</p>

SECTION 31, TOWNSHIP 21 SOUTH, RANGE 37 EAST, N.M.P.M.,
LEA COUNTY, NEW MEXICO



DIRECTIONS TO LOCATION

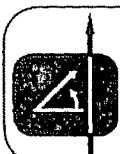
FROM THE INTERSECTION OF CO. RD. #E33 (S. LEGION), CO. RD. #E23 (TEXAS AVE.), GO WEST ON TEXAS AVE. APPROX. 1.4 MILES. TURN LEFT AND GO SOUTH APPROX. 0.35 MILES. TURN RIGHT AND GO WEST APPROX. 0.2 MILES. TURN RIGHT AND GO NORTH APPROX. 0.10 MILES AND VEER LEFT ON TWO TRACK RD. NORTHWEST APPROX. 0.1 MILE. THIS LOCATION IS APPROX. 140 FEET SOUTHWEST.



APACHE CORPORATION

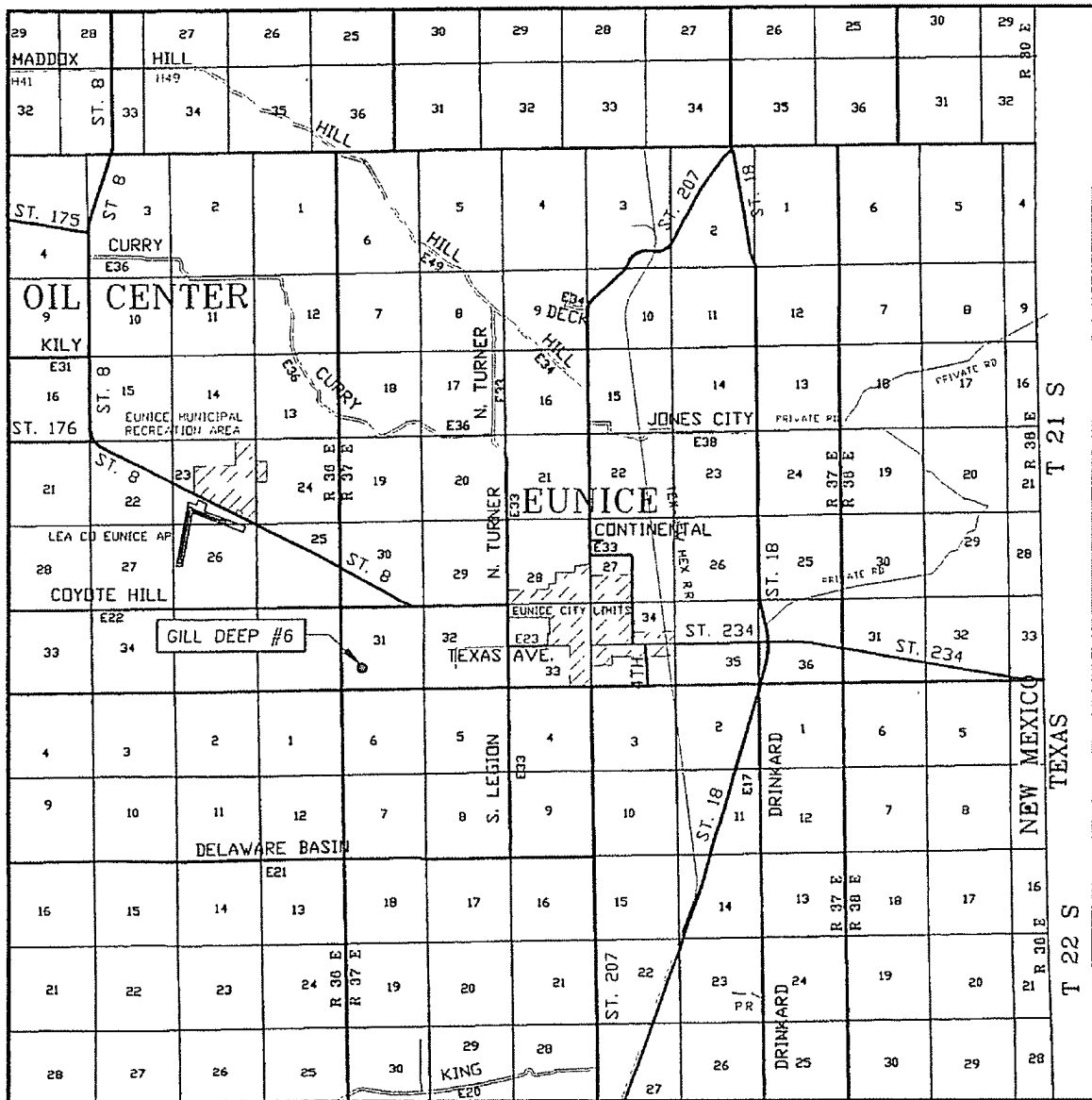
GILL DEEP #6 WELL
LOCATED 1370 FEET FROM THE SOUTH LINE
AND 1300 FEET FROM THE WEST LINE OF SECTION 31,
TOWNSHIP 21 SOUTH, RANGE 37 EAST, N.M.P.M.,
LEA COUNTY, NEW MEXICO.

Survey Date: 9/6/07	Sheet 1 of 1 Sheets
W.O. Number: 07.11.1090	Dr By: AR
Date: 9/17/07	Rev 1: N/A
Disk:	07111090
	Scale: 1"=100'



PROVIDING SURVEYING SERVICES
SINCE 1946
JOHN WEST SURVEYING COMPANY
412 N. DAL PASO
HOBBS, N.M. 88240
(505) 393-3117

VICINITY MAP



SCALE: 1" = 2 MILES

SEC. 31 TWP. 21-S RGE. 37-E

SURVEY N.M.P.M.

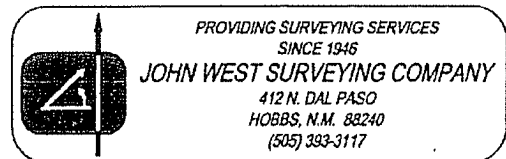
COUNTY LEA STATE NEW MEXICO

DESCRIPTION 1370' FSL & 1300' FWL

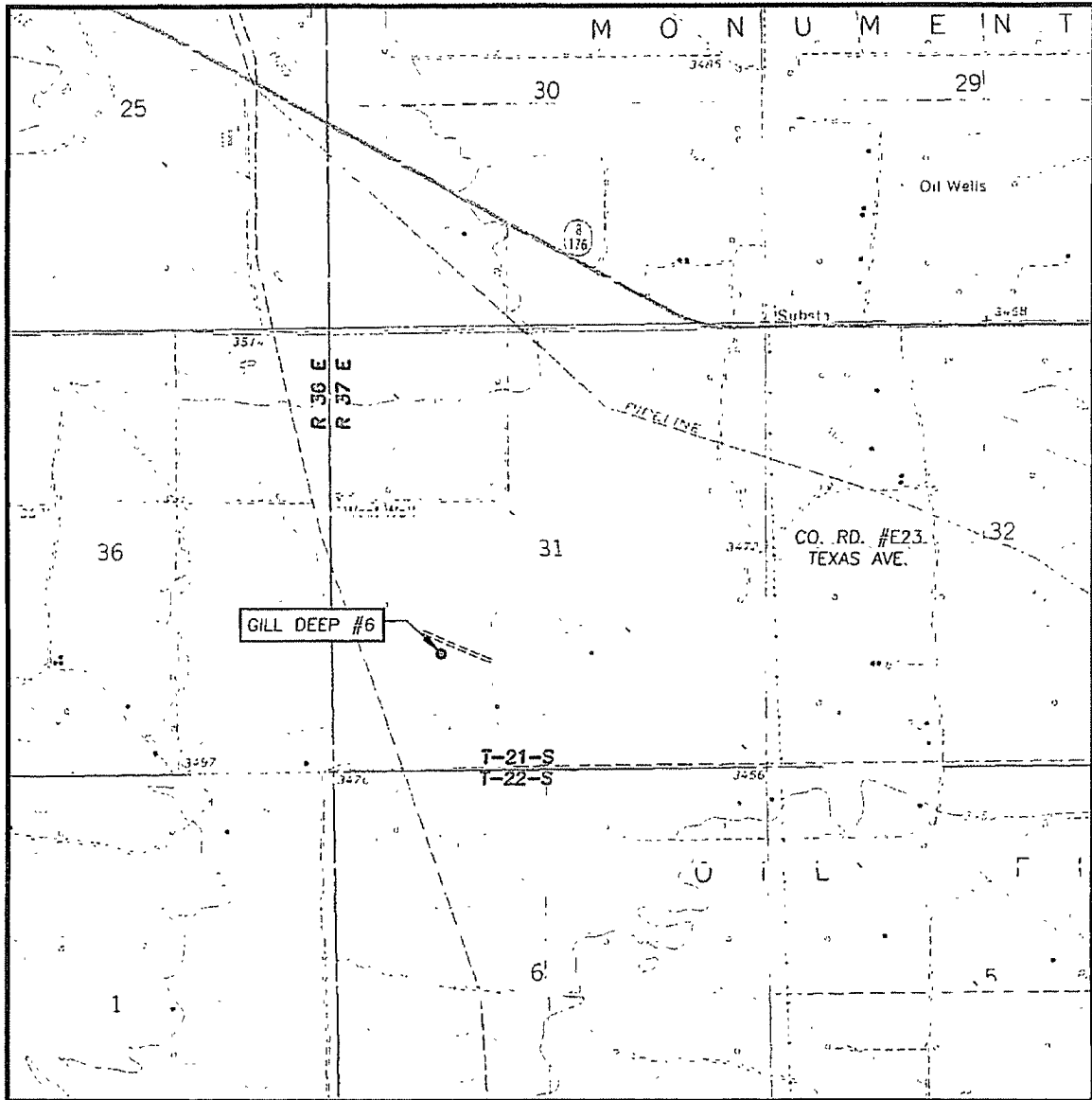
ELEVATION 3469'

OPERATOR APACHE CORPORATION

LEASE GILL DEEP



LOCATION VERIFICATION MAP



SCALE: 1" = 2000'

CONTOUR INTERVAL:
EUNICE, N.M. - 10'

SEC. 31 TWP. 21-S RGE. 37-E

SURVEY N.M.P.M.

COUNTY LEA STATE NEW MEXICO

DESCRIPTION 1370' FSL & 1300' FWL

ELEVATION 3469'

OPERATOR APACHE CORPORATION

LEASE GILL DEEP

U.S.G.S. TOPOGRAPHIC MAP
EUNICE, N.M.

