

District I  
1625 N French Dr, Hobbs, NM 88240  
District II  
1301 W. Grand Avenue, Artesia, NM 88210  
District III  
1000 Rio Brazos Road, Aztec, NM 87410  
District IV  
1220 S. St. Francis Dr., Santa Fe, NM 87505

State of New Mexico  
Energy Minerals and Natural Resources

Form C-101  
June 16, 2008

Oil Conservation Division  
1220 South St. Francis Dr.  
Santa Fe, NM 87505

RECEIVED

Appropriate District Office

☐ AMENDED REPORT

JUL 29 2008

HOBBS OCD

APPLICATION FOR PERMIT TO DRILL, RE-ENTER, DEEPEN  
PLUGBACK, OR ADD A ZONE

<sup>1</sup> Operator Name and Address Apache Corporation 6120 S. Yale Ave, Suite 1500 Tulsa, OK 74136		<sup>2</sup> OGRID Number 873
		<sup>3</sup> API Number 30-025-39056
<sup>3</sup> Property Code 23113	<sup>5</sup> Property Name State C Tract 12	<sup>6</sup> Well No. 026
<sup>9</sup> Proposed Pool 1 WSW San Andres 96221		<sup>10</sup> Proposed Pool 2

<sup>7</sup> Surface Location									
UL or lot no. C	Section 16	Township 21S	Range 37E	Lot Idn 2	Feet from the 990	North/South line North	Feet from the 1650	East/West line West	County Lea

<sup>8</sup> Proposed Bottom Hole Location If Different From Surface									
UL or lot no.	Section	Township	Range	Lot Idn	Feet from the	North/South line	Feet from the	East/West line	County

<sup>11</sup> Work Type Code Drilling (N) (W) WSW					<sup>13</sup> Cable/Rotary (R) ROTARY		<sup>14</sup> Lease Type Code (4) STATE		<sup>15</sup> Ground Level Elevation 3,489	
<sup>16</sup> Multiple A10		<sup>17</sup> Proposed Depth 5,300		<sup>18</sup> Formation San Andres		<sup>19</sup> Contractor CAPSTAR		<sup>20</sup> Spud Date 8/15/08		

<sup>21</sup> Proposed Casing and Cement Program

Hole Size	Casing Size	Casing weight/foot	Setting Depth	Sacks of Cement	Estimated TOC
12 1/4	9 5/8	40	1,300	600	0
8 3/4	7	26	5,300	800	0

<sup>22</sup> Describe the proposed program. If this application is to DEEPEN or PLUG BACK, give the data on the present productive zone and proposed new productive zone. Describe the blowout prevention program, if any. Use additional sheets if necessary.

<sup>23</sup> I hereby certify that the information given above is true and complete to the best of my knowledge and belief.		OIL CONSERVATION DIVISION	
Signature: 		Approved by: 	
Printed name: SAM HAMPTON		Title: PETROLEUM ENGINEER	
Title: Drilling Engineer		Approval Date: JUL 29 2008	Expiration Date:
E-mail Address: sam.hampton@apachecorp.com			
Date: 7/28/08	Phone: 918 491 4954 cell 918 998 0121	Conditions of Approval Attached <input type="checkbox"/>	

DISTRICT I  
1625 N. French Dr., Hobbs, NM 88240

DISTRICT II  
1301 W. Grand Avenue, Artesia, NM 88210

DISTRICT III  
1000 Rio Brazos Rd., Aztec, NM 87410

DISTRICT IV  
1220 S. St. Francis Dr., Santa Fe, NM 87505

State of New Mexico  
Energy, Minerals and Natural Resources Department

OIL CONSERVATION DIVISION  
1220 South St. Francis Dr.  
Santa Fe, New Mexico 87505

Form C-102  
Revised October 12, 2005

Submit to Appropriate District Office  
State Lease - 4 Copies  
Fee Lease - 3 Copies

☐ AMENDED REPORT

WELL LOCATION AND ACREAGE DEDICATION PLAT

API Number	Pool Code	Pool Name
Property Code	Property Name STATE C TRACT 12	Well Number 26
OGRID No.	Operator Name APACHE CORPORATION	Elevation 3489'

Surface Location

UL or lot No.	Section	Township	Range	Lot Idn	Feet from the	North/South line	Feet from the	East/West line	County
C	16	21 S	37 E		990	NORTH	1650	WEST	LEA

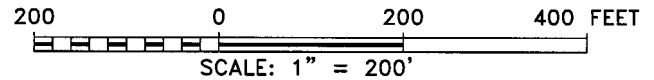
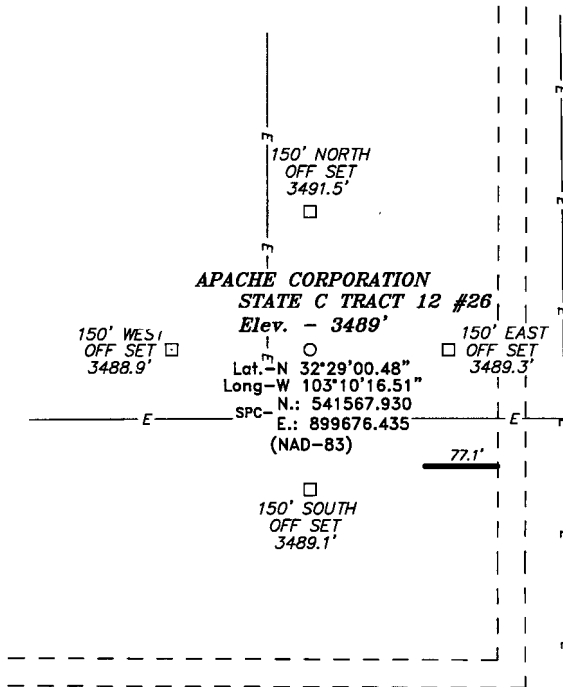
Bottom Hole Location If Different From Surface

UL or lot No.	Section	Township	Range	Lot Idn	Feet from the	North/South line	Feet from the	East/West line	County
Dedicated Acres	Joint or Infill	Consolidation Code	Order No.						

NO ALLOWABLE WILL BE ASSIGNED TO THIS COMPLETION UNTIL ALL INTERESTS HAVE BEEN CONSOLIDATED  
OR A NON-STANDARD UNIT HAS BEEN APPROVED BY THE DIVISION

	<b>OPERATOR CERTIFICATION</b>  I hereby certify that the information contained herein is true and complete to the best of my knowledge and belief, and that this organization either owns a working interest or unleased mineral interest in the land including the proposed bottom hole location pursuant to a contract with an owner of such a mineral or working interest, or to a voluntary pooling agreement or a compulsory pooling order heretofore entered by the division.  Signature: <u>Lana Williams</u> Date: <u>7/22/08</u>  Printed Name: <u>Lana Williams</u>	
	<b>SURVEYOR CERTIFICATION</b>  I hereby certify that the well location shown on this plat was plotted from field notes of actual surveys made by me or under my supervision, and that the same is true and correct to the best of my belief.  JULY 16, 2008 Date Surveyed: <u>JULY 16, 2008</u> Signature & Seal of Surveyor: <u>GARY L. JONES</u> Professional Surveyor 	
	Certificate No. Gary L. Jones 7977	
	BASIN SURVEYS	

SECTION 16, TOWNSHIP 21 SOUTH, RANGE 37 EAST, N.M.P.M.,  
LEA COUNTY, NEW MEXICO.



Directions to Location:

FROM THE JUNCTION OF STATE HWY 207 AND CO.  
RD. 34 (HILL), GO NORTHWEST 0.6 MILES TO LEASE  
ROAD, ON LEASE ROAD GO 0.1 MILES WEST TO  
APACHE WBDU099 STATE 6 TRACT 12 #9 THEN  
SOUTH 0.1 MILES TO PROPOSED LEASE ROAD.

**BASIN SURVEYS** P.O. BOX 1786-HOBBS, NEW MEXICO

W.O. Number: 20102 Drawn By: J. M. SMALL

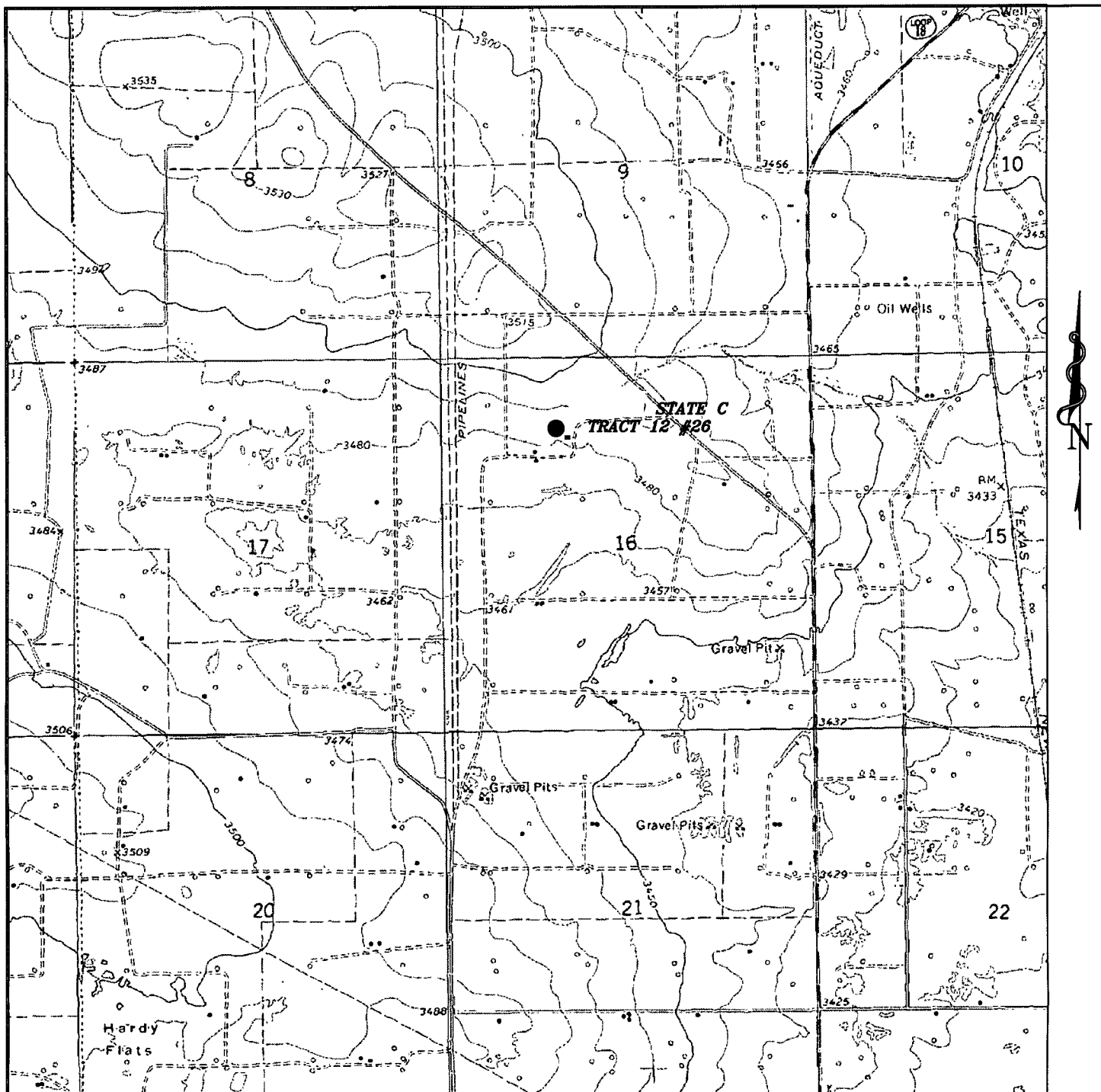
Date: 07-18-2008 Disk: 20102 JMS

**APACHE CORPORATION**

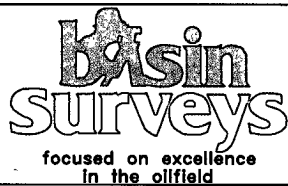
REF: STATE C TRACT 12 #26 / WELL PAD TOPO

THE STATE C TRACT 12 #26 LOCATED 990'  
FROM THE NORTH LINE AND 1650' FROM THE WEST LINE OF  
SECTION 16, TOWNSHIP 21 SOUTH, RANGE 37 EAST,  
N.M.P.M., LEA COUNTY, NEW MEXICO.

Survey Date: 07-16-2008 Sheet 1 of 1 Sheets



**STATE C TRACT 12 #26**  
 Located at 990' FNL AND 1650' FWL  
 Section 16, Township 21 South, Range 37 East,  
 N.M.P.M., Lea County, New Mexico.



P.O. Box 1786  
 1120 N. West County Rd.  
 Hobbs, New Mexico 88241  
 (505) 393-7316 - Office  
 (505) 392-3074 - Fax  
 basinsurveys.com

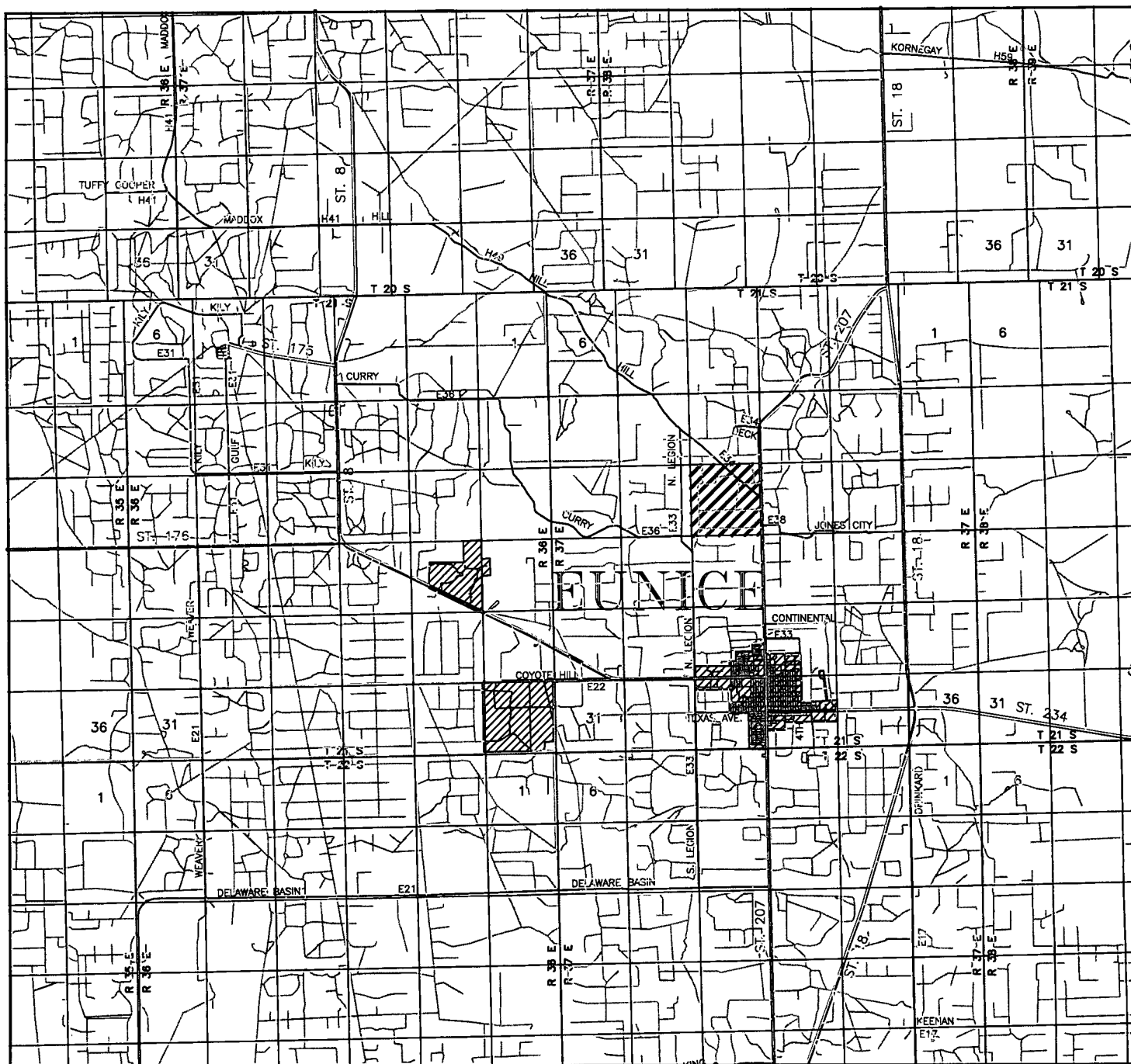
W.O. Number: 20102

Survey Date: 07-16-2008

Scale: 1" = 2000'

Date: 07-18-2008

**APACHE  
CORP.**



STATE C TRACT 12 #26  
 Located at 990' FNL AND 1650' FWL  
 Section 16, Township 21 South, Range 37 East,  
 N.M.P.M., Lea County, New Mexico.



P.O. Box 1786  
 1120 N. West County Rd.  
 Hobbs, New Mexico 88241  
 (505) 393-7316 - Office  
 (505) 392-3074 - Fax  
 basinsurveys.com

W.O. Number: JMS 20102

Survey Date: 07-16-2008

Scale: 1" = 2 MILES

Date: 07-18-2008

APACHE  
 CORP.