

DISTRICT I
1625 N. FRENCH DR., HOBBS, NM 88240

DISTRICT II
1301 W. GRAND AVENUE, ARTESIA, NM 88210

DISTRICT III
1000 Rio Brazos Rd., Aztec, NM 87410

DISTRICT IV
1220 S. ST. FRANCIS DR., SANTA FE, NM 87505

State of New Mexico
Energy, Minerals and Natural Resources Department

OIL CONSERVATION DIVISION
1220 SOUTH ST. FRANCIS DR.
Santa Fe, New Mexico 87505

Form C-102
Revised October 12, 2005
Submit to Appropriate District Office
State Lease - 4 Copies
Fee Lease - 3 Copies

WELL LOCATION AND ACREAGE DEDICATION PLAT

☐ AMENDED REPORT

API Number 30-025-39198	Pool Code 32300	Pool Name Hobbs, San Andres EAST
Property Code 300385	Property Name EAST HOBBS SA UNIT	Well Number 813
OGRID No. 220420	Operator Name ARENA RESOURCES, INC.	Elevation 3599'

Surface Location

UL or lot No.	Section	Township	Range	Lot Idn	Feet from the	North/South line	Feet from the	East/West line	County
N	29	18-S	39-E		220	SOUTH	1110	WEST	LEA

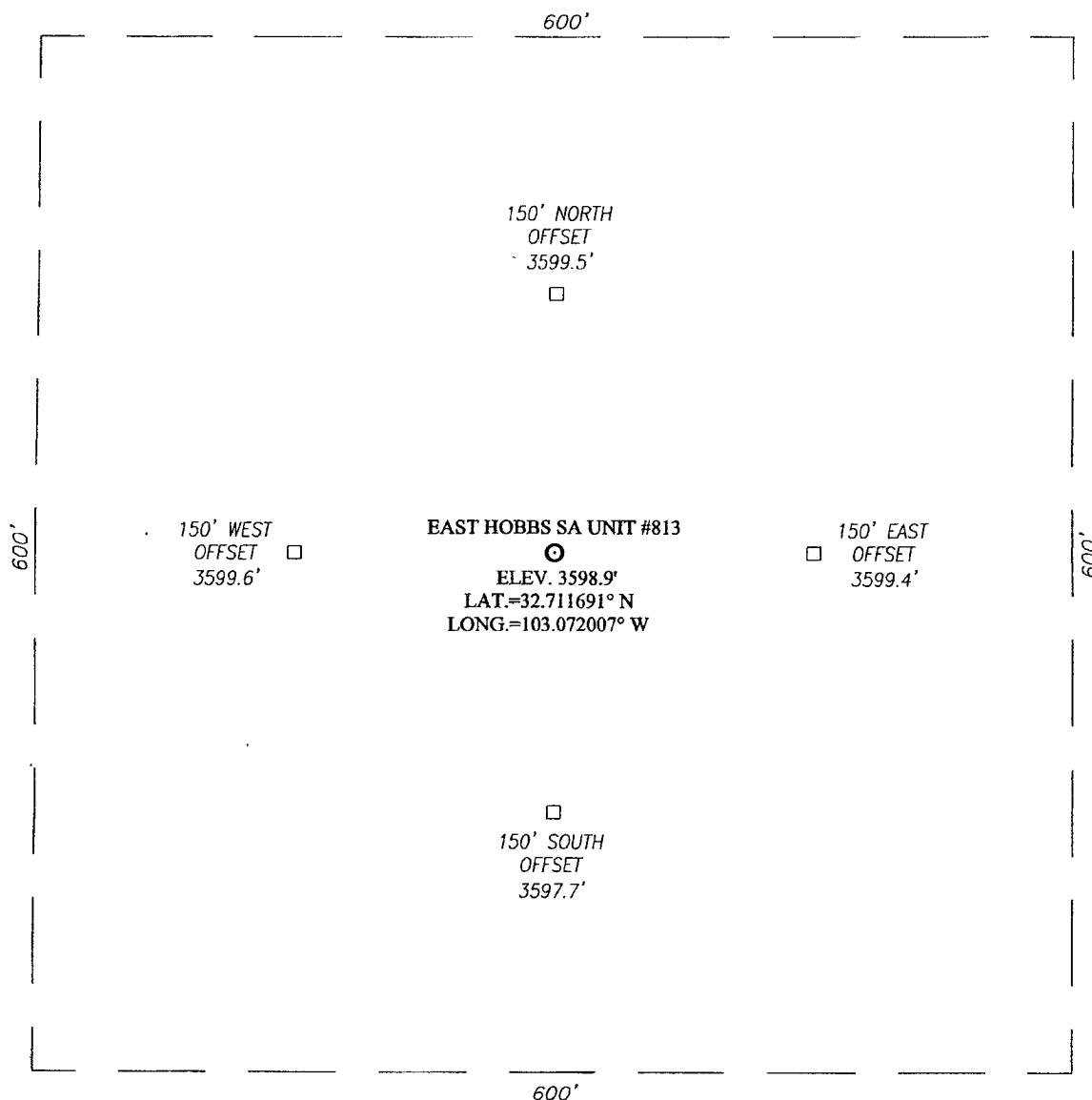
Bottom Hole Location If Different From Surface

UL or lot No.	Section	Township	Range	Lot Idn	Feet from the	North/South line	Feet from the	East/West line	County
Dedicated Acres 40	Joint or Infill	Consolidation Code	Order No.						

NO ALLOWABLE WILL BE ASSIGNED TO THIS COMPLETION UNTIL ALL INTERESTS HAVE BEEN CONSOLIDATED
OR A NON-STANDARD UNIT HAS BEEN APPROVED BY THE DIVISION

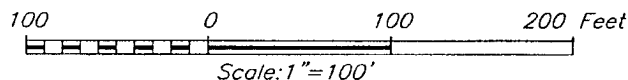
<p>LEA COUNTY, STATE OF NEW MEXICO</p> <p>STATE OF TEXAS</p> <p>GEODETIC COORDINATES NAD 27 NME SURFACE LOCATION</p> <p>Y=624932.4 N X=887967.5 E</p> <p>LAT.=32.711691° N LONG.=103.072007° W</p> <p>1110' → ○ 220'</p>	LOT 1	
	25.91 AC. LOT 2	
	25.94 AC. LOT 3	
	25.96 AC. LOT 4	
	25.99 AC.	
OPERATOR CERTIFICATION <p>I hereby certify that the information herein is true and complete to the best of my knowledge and belief, and that this organization either owns a working interest or unleased mineral interest in the land including the proposed bottom hole location or has a right to drill this well at this location pursuant to a contract with an owner of such mineral or working interest, or to a voluntary pooling agreement or a compulsory pooling order heretofore entered by the division.</p> <p><i>Colleen Robinson</i> 10/9/08 Signature Date COLLEEN ROBINSON Printed Name</p>		
SURVEYOR CERTIFICATION <p>I hereby certify that the well location shown on this plat was plotted from field notes of actual surveys made by me or under my supervision, and that the same is true and correct to the best of my belief.</p> <p>SEP 29 2008 Date Surveyed Signature & Seal of Professional Surveyor 3230 <i>Ronald J. Eidson</i> 10/02/08 108114412</p> <p>Certificate No. GARY G. EIDSON 12641 RONALD J. EIDSON 3239</p>		

SECTION 29, TOWNSHIP 18 SOUTH, RANGE 39 EAST, N.M.P.M.,
 LEA COUNTY, NEW MEXICO



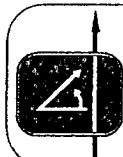
DIRECTIONS TO LOCATION

FROM THE INTERSECTION OF BLUE QUAIL RD. AND LANDFILL RD., GO EAST ON BLUE QUAIL RD. APPROX. 0.5 MILES. TURN LEFT AT ARENA RESOURCES, INC. GATE AND GO NORTHEAST APPROX. 0.3 MILES. TURN RIGHT AND GO SOUTHEAST APPROX. 200 FEET. TURN LEFT AND GO NORTHEAST APPROX. 200 FEET. TURN RIGHT AND GO SOUTHEAST APPROX. 0.15 MILES. TURN LEFT AND GO NORTHEAST APPROX. 300 FEET. ROAD BENDS RIGHT AT ARENA RESOURCES, INC. #610 (ABANDONED) WELL PAD AND GO APPROX. 0.4 MILES. TURN RIGHT AND GO SOUTH APPROX. 0.2 MILES. THIS LOCATION IS APPROX. 320 FEET EAST.



ARENA RESOURCES, INC.

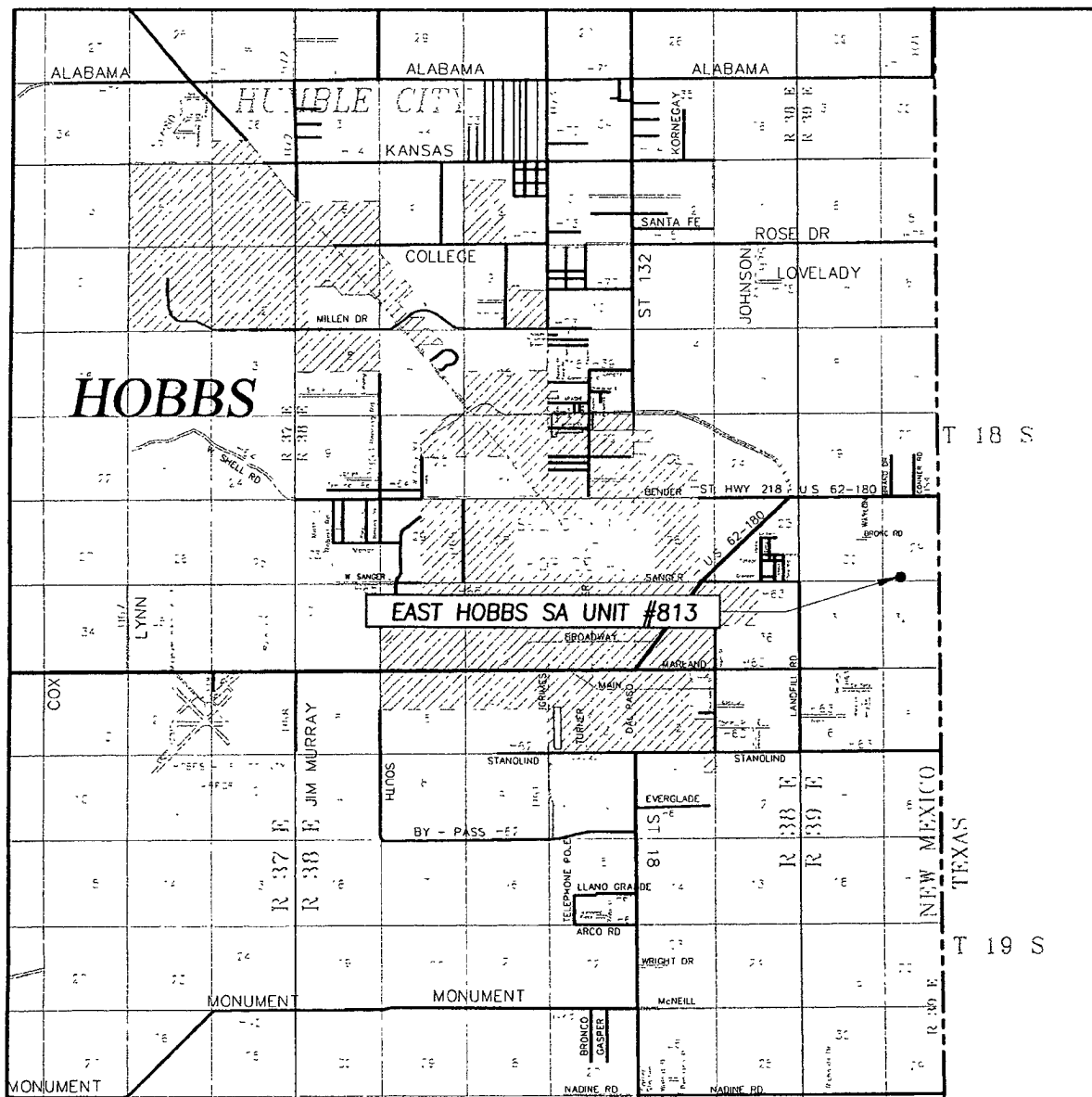
EAST HOBBS SA UNIT #813 WELL
 LOCATED 220 FEET FROM THE SOUTH LINE
 AND 1110 FEET FROM THE WEST LINE OF SECTION 29,
 TOWNSHIP 18 SOUTH, RANGE 39 EAST, N.M.P.M.,
 LEA COUNTY, NEW MEXICO.



PROVIDING SURVEYING SERVICES
 SINCE 1946
JOHN WEST SURVEYING COMPANY
 412 N. DAL PASO
 HOBBS, N.M. 88240
 (575) 393-3117

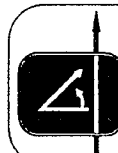
Survey Date: 9/29/08	Sheet 1 of 1 Sheets
W.O. Number: 08.11.1412	Dr By: DSS
Date: 10/2/08	08111412
	Scale: 1"=100'

VICINITY MAP



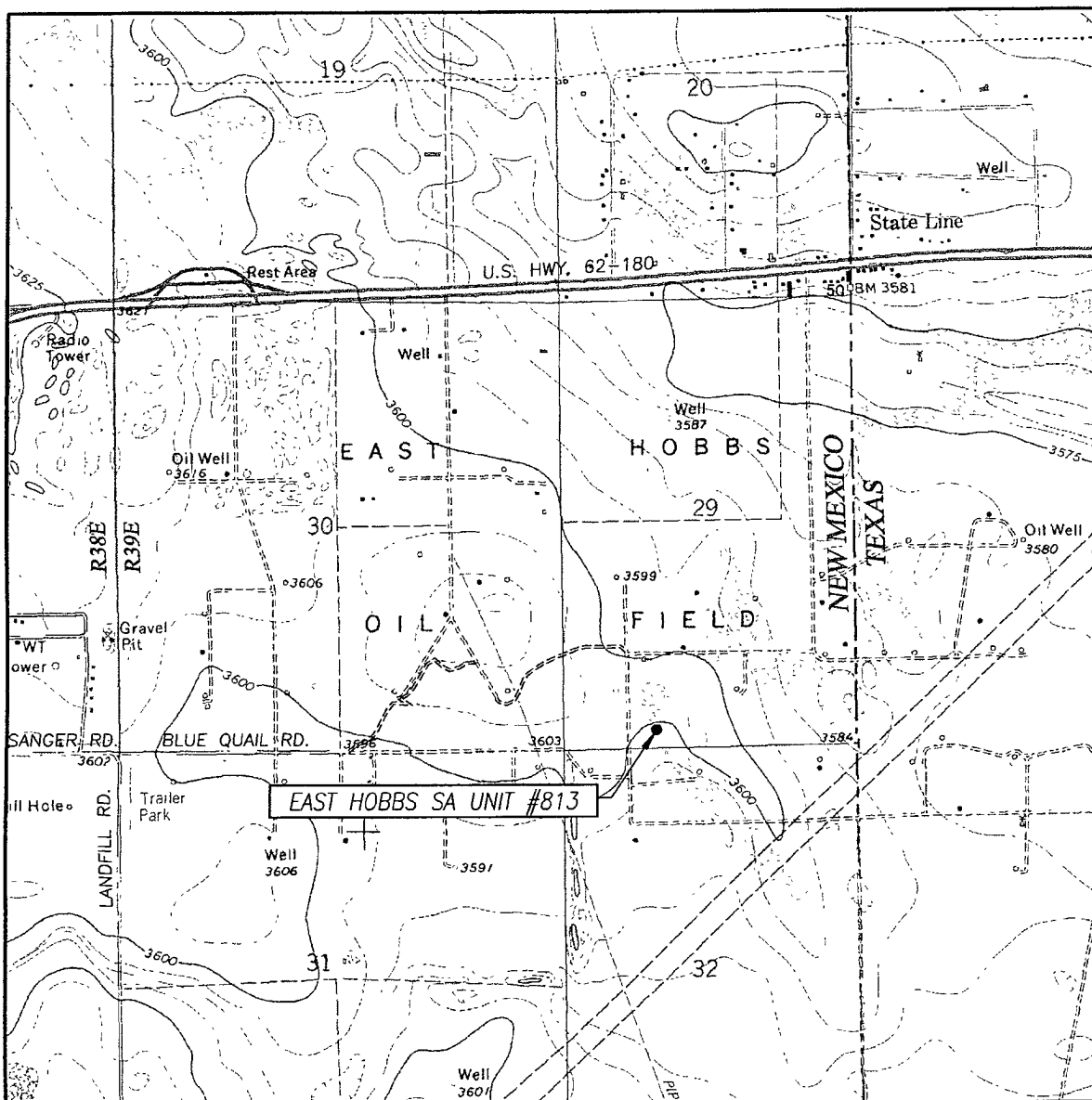
SCALE: 1" = 2 MILES

SEC. 29 TWP. 18-S RGE. 39-E
 SURVEY N.M.P.M.
 COUNTY LEA STATE NEW MEXICO
 DESCRIPTION 220' FSL & 1110' FWL
 ELEVATION 3599'
 OPERATOR ARENA RESOURCES, INC.
 LEASE EAST HOBBS SA UNIT



PROVIDING SURVEYING SERVICES
 SINCE 1946
 JOHN WEST SURVEYING COMPANY
 412 N. DAL PASO
 HOBBS, N.M. 88240
 (575) 393-3117

LOCATION VERIFICATION MAP



SCALE: 1" = 2000'

CONTOUR INTERVAL:
HOBBS EAST, N.M. - 5'

SEC. 29 TWP. 18-S RGE. 39-E

SURVEY _____ N.M.P.M. _____

COUNTY LEA STATE NEW MEXICO

DESCRIPTION 220' FSL & 1110' FWL

ELEVATION 3599'

OPERATOR ARENA RESOURCES, INC.

LEASE EAST HOBBS SA UNIT

U.S.G.S. TOPOGRAPHIC MAP
HOBBS EAST, N.M.



PROVIDING SURVEYING SERVICES
SINCE 1946
JOHN WEST SURVEYING COMPANY
412 N. DAL PASO
HOBBS, N.M. 88240
(575) 393-3117