

## DISTRICT I

1625 N. FRENCH DR., HOBBS, NM 88240

## DISTRICT II

1301 W. GRAND AVENUE, ARTESIA, NM 88210

## DISTRICT III

1000 Rio Brazos Rd., Aztec, NM 87410

## DISTRICT IV

1220 S. ST. FRANCIS DR., SANTA FE, NM 87505

## State of New Mexico

Energy, Minerals and Natural Resources Department

## OIL CONSERVATION DIVISION

1220 SOUTH ST. FRANCIS DR.  
Santa Fe, New Mexico 87505

Form C-102

Revised October 12, 2005

Submit to Appropriate District Office

State Lease - 4 Copies

Fee Lease - 3 Copies

## WELL LOCATION AND ACREAGE DEDICATION PLAT

☐ AMENDED REPORT

API Number <b>30-025-39201</b>	Pool Code <b>37240</b>	Pool Name <b>Langlie Mattix, 7 RURS-Q-Grayburg</b>
Property Code <b>304315</b>	Property Name <b>LANGLIE MATTIX QUEEN UNIT</b>	Well Number <b>47</b>
OGRID No. <b>220420</b>	Operator Name <b>ARENA RESOURCES, INC.</b>	Elevation <b>3095'</b>

## Surface Location

UL or lot No.	Section	Township	Range	Lot Idn	Feet from the	North/South line	Feet from the	East/West line	County
B	15	25-S	37-E		1305	NORTH	2630	EAST	LEA

## Bottom Hole Location If Different From Surface

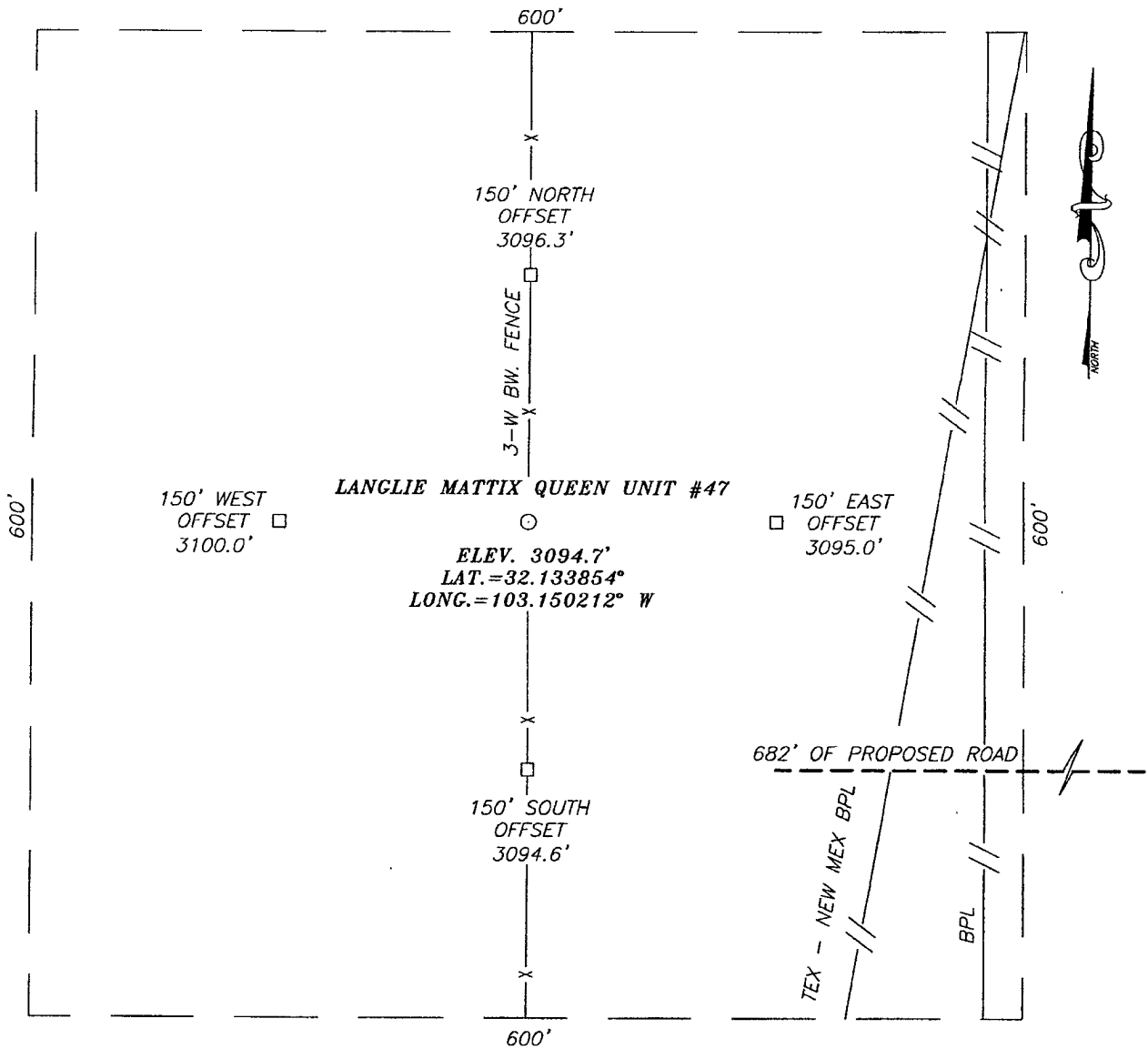
UL or lot No.	Section	Township	Range	Lot Idn	Feet from the	North/South line	Feet from the	East/West line	County

Dedicated Acres	Joint or Infill	Consolidation Code	Order No.
<b>40</b>			

NO ALLOWABLE WILL BE ASSIGNED TO THIS COMPLETION UNTIL ALL INTERESTS HAVE BEEN CONSOLIDATED  
OR A NON-STANDARD UNIT HAS BEEN APPROVED BY THE DIVISION

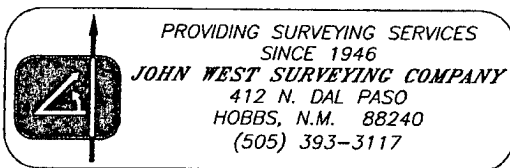
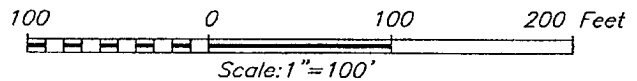
<p>GEODETIC COORDINATES NAD 27 NME</p> <p>Y=414429.8 N X=866238.7 E</p> <p>LAT.=32.133854° N LONG.=103.150212° W</p>	<p><b>OPERATOR CERTIFICATION</b></p> <p>I hereby certify that the information herein is true and complete to the best of my knowledge and belief, and that this organization either owns a working interest or unleased mineral interest in the land including the proposed bottom hole location or has a right to drill this well at this location pursuant to a contract with an owner of such mineral or working interest, or to a voluntary pooling agreement or a compulsory pooling order heretofore entered by the division.</p> <p><i>[Signature]</i> <b>10-9-08</b> Signature Date</p> <p><b>COLLEEN ROBINSON</b> Printed Name</p>
	<p><b>SURVEYOR CERTIFICATION</b></p> <p>I hereby certify that the well location shown on this plat was plotted from field notes of actual surveys made by me or under my supervision, and that the same is true and correct to the best of my belief.</p> <p><b>SEPTEMBER 22, 2008</b> Date Surveyed</p> <p><i>[Signature]</i> Signature &amp; Seal of Professional Surveyor</p> <p><b>RONALD J. EIDSON</b> Certificate No. 12641</p> <p><b>RONALD J. EIDSON</b> 3239</p>

**SECTION 15, TOWNSHIP 25 SOUTH, RANGE 37 EAST, N.M.P.M.,**  
 LEA COUNTY, NEW MEXICO



**DIRECTIONS TO LOCATION**

FROM THE INTERSECTION OF HWY. #128 AND WILLIS ROAD, GO NORTH ON WILLIS ROAD APPROX. 0.5 MILES. TURN LEFT AT LEASE ROAD AND GO NORTHWEST FOR APPROX. 0.4 MILES TO A PROPOSED ROAD SURVEY. FOLLOW PROPOSED ROAD SURVEY WEST 682 FEET TO THIS LOCATION.

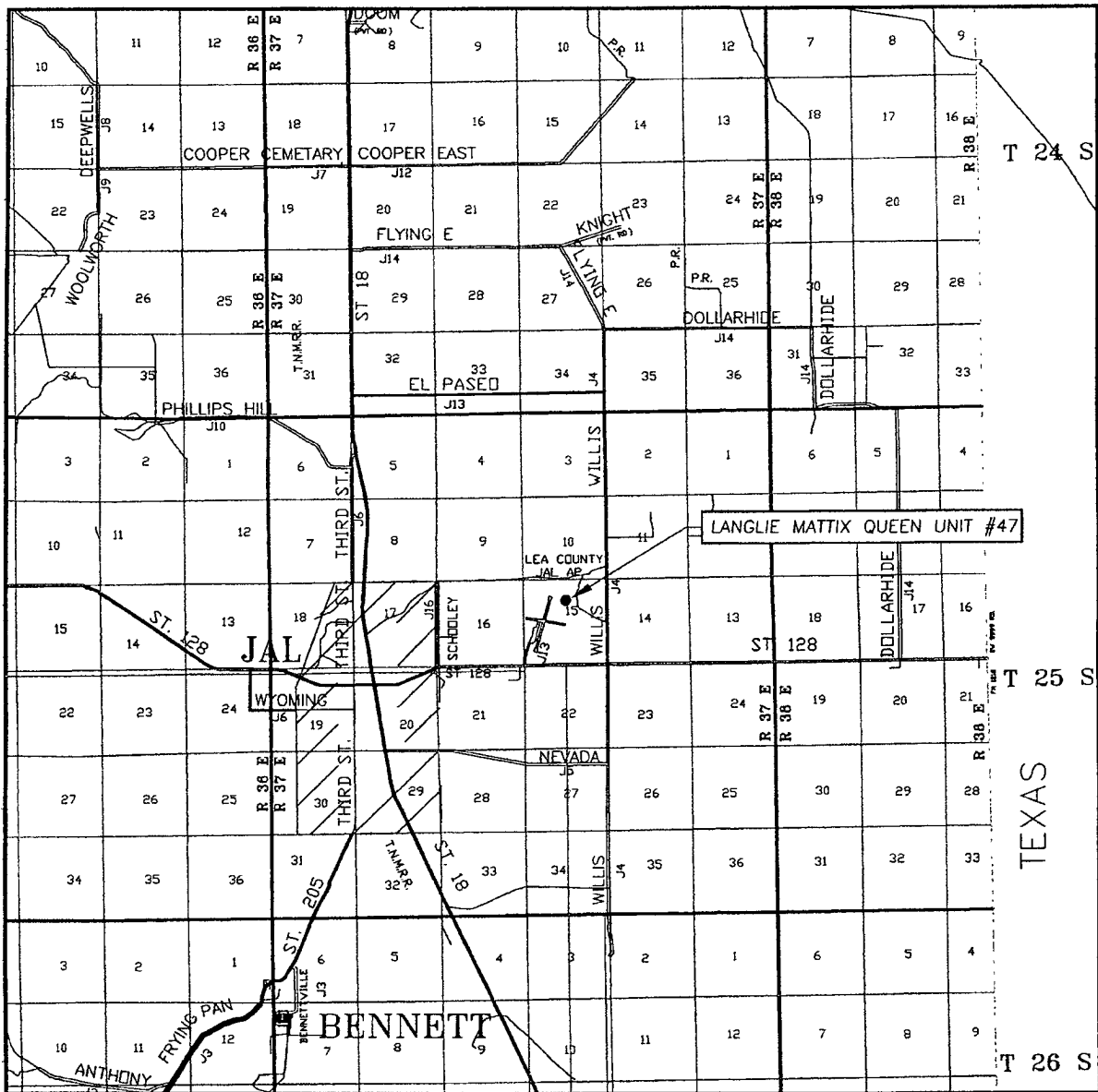


**ARENA RESOURCES, INC.**

LANGLIE MATTIX QUEEN UNIT #47 WELL  
 LOCATED 1305 FEET FROM THE NORTH LINE  
 AND 2630 FEET FROM THE EAST LINE OF SECTION 15,  
 TOWNSHIP 25 SOUTH, RANGE 37 EAST, N.M.P.M.,  
 LEA COUNTY, NEW MEXICO.

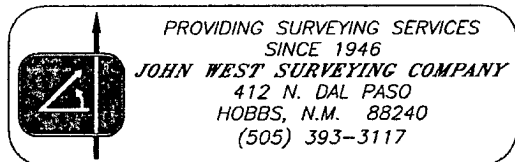
Survey Date: 9/22/08	Sheet 1 of 1 Sheets
W.O. Number: 08.11.1416	Dr By: JC
Date: 9/25/08	08111416
	Scale: 1"=100'

# VICINITY MAP

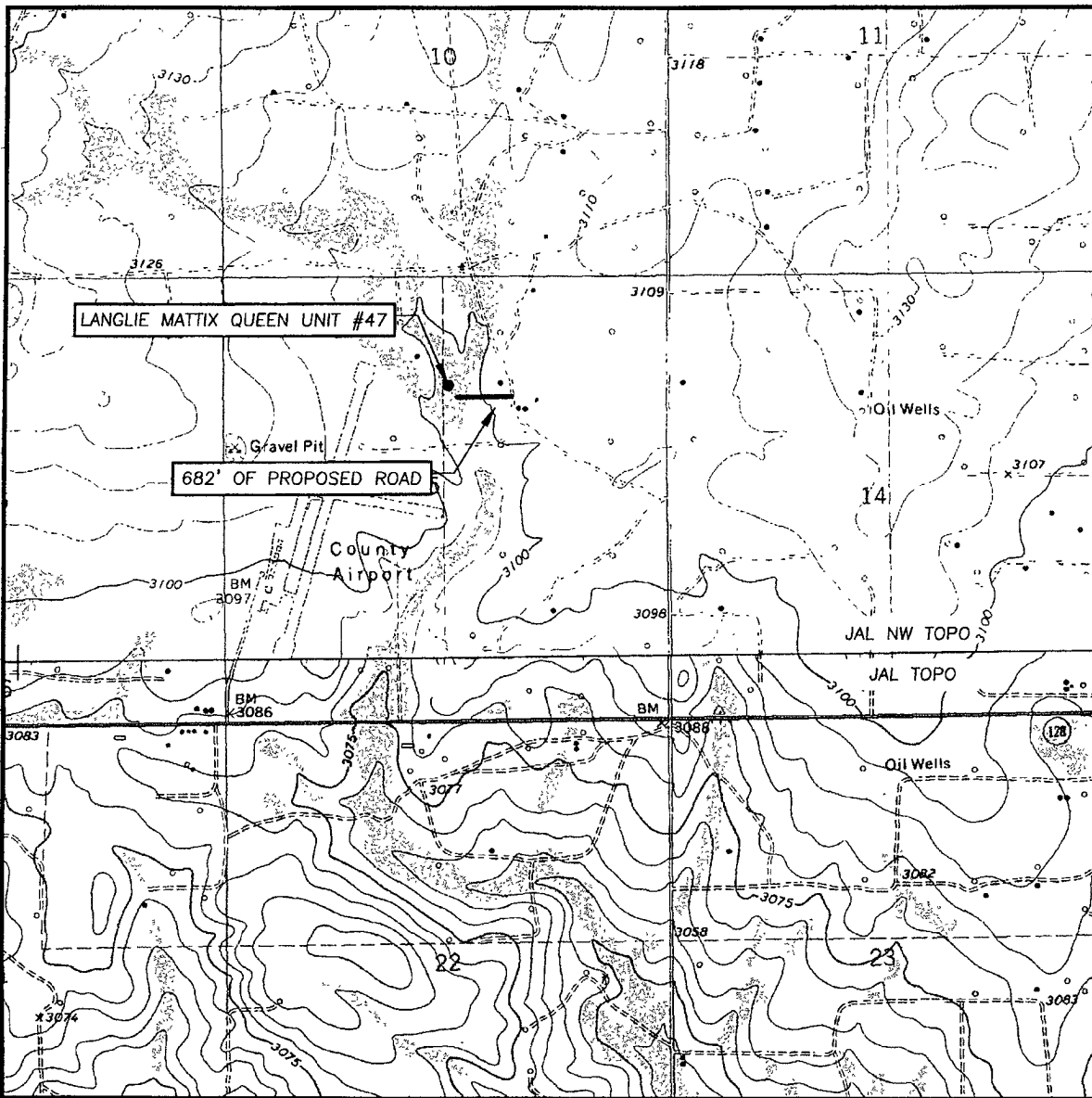


SCALE: 1" = 2 MILES

SEC. 15 TWP. 25-S RGE. 37-E  
 SURVEY N.M.P.M.  
 COUNTY LEA STATE NEW MEXICO  
 DESCRIPTION 1305' FNL & 2630' FEL  
 ELEVATION 3095'  
 OPERATOR ARENA RESOURCES, INC.  
 LEASE LANGLIE MATTIX QUEEN UNIT



# LOCATION VERIFICATION MAP



SCALE: 1" = 2000'

CONTOUR INTERVAL:  
JAL NW, N.M. - 10'  
JAL, N.M. - 5'

SEC. 15 TWP. 25-S RGE. 37-E

SURVEY N.M.P.M.

COUNTY LEA STATE NEW MEXICO

DESCRIPTION 1305' FNL & 2630' FEL

ELEVATION 3095'

OPERATOR ARENA RESOURCES, INC.

LEASE LANGLIE MATTIX QUEEN UNIT

U.S.G.S. TOPOGRAPHIC MAP

JAL NW, N.M.

