

DISTRICT I
1625 N. FRENCH DR., HOBBS, NM 88240

State of New Mexico
Energy, Minerals and Natural Resources Department

Form C-102
Revised October 12, 2005
Submit to Appropriate District Office
State Lease - 4 Copies
Fee Lease - 3 Copies

DISTRICT II
1301 W. GRAND AVENUE, ARTESIA, NM 88210

OIL CONSERVATION DIVISION
1220 SOUTH ST. FRANCIS DR.
Santa Fe, New Mexico 87505

DISTRICT III
1000 Rio Brazos Rd., Aztec, NM 87410

DISTRICT IV
1220 S. ST. FRANCIS DR., SANTA FE, NM 87505

WELL LOCATION AND ACREAGE DEDICATION PLAT

☐ AMENDED REPORT

API Number 30-025-39217	Pool Code 37240	Pool Name Angeli Nattiv; 7RVS-Q-Grayburg
Property Code 304314	Property Name HUMPHREY QUEEN UNIT	Well Number 33
OGRID No. 220400	Operator Name ARENA RESOURCES, INC.	Elevation 3174'

Surface Location

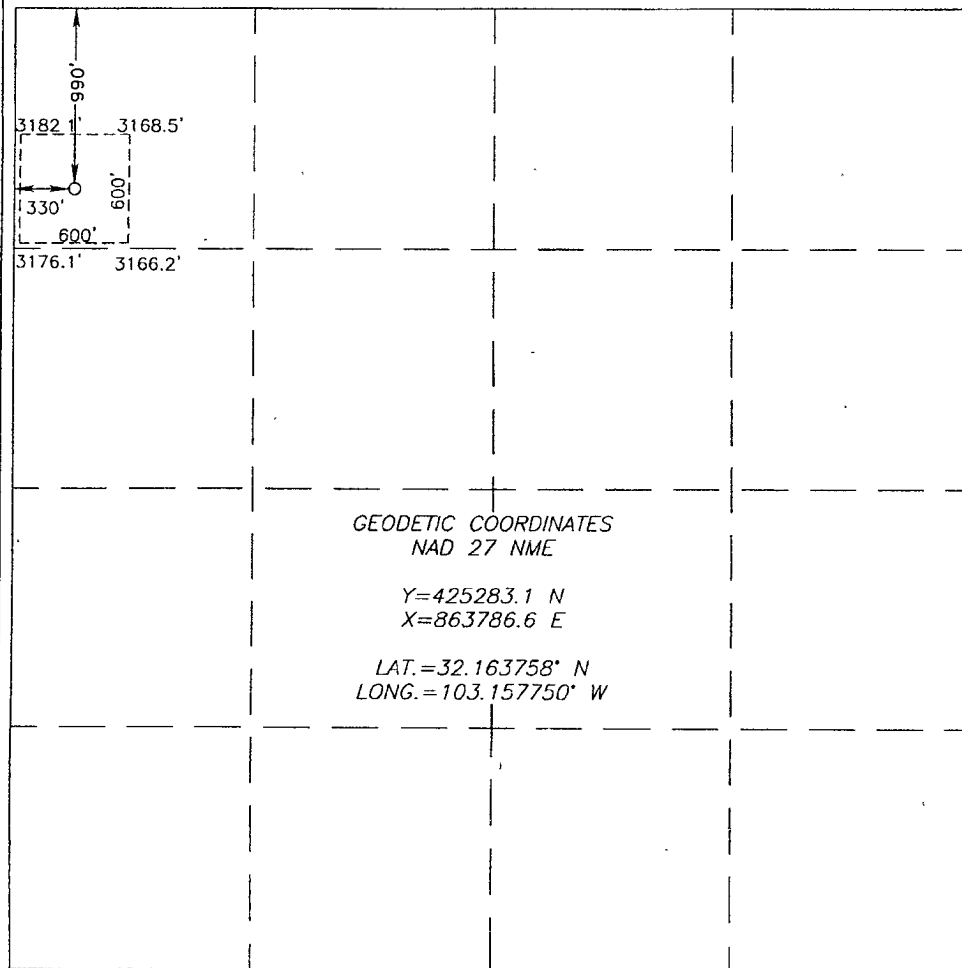
UL or lot No.	Section	Township	Range	Lot Idn	Feet from the	North/South line	Feet from the	East/West line	County
D	3	25-S	37-E		990	NORTH	330	WEST	LEA

Bottom Hole Location If Different From Surface

UL or lot No.	Section	Township	Range	Lot Idn	Feet from the	North/South line	Feet from the	East/West line	County

Dedicated Acres 40.29	Joint or Infill	Consolidation Code	Order No.
---------------------------------	-----------------	--------------------	-----------

NO ALLOWABLE WILL BE ASSIGNED TO THIS COMPLETION UNTIL ALL INTERESTS HAVE BEEN CONSOLIDATED
OR A NON-STANDARD UNIT HAS BEEN APPROVED BY THE DIVISION



OPERATOR CERTIFICATION

I hereby certify that the information herein is true and complete to the best of my knowledge and belief, and that this organization either owns a working interest or unless mineral interest in the land including the proposed bottom hole location or has a right to drill this well at this location pursuant to a contract with an owner of such mineral or working interest, or to a voluntary pooling agreement or a compulsory pooling order heretofore entered by the division.

Signature: **Caleen Robinson** Date: **10-20-08**
Printed Name: **CALEEN ROBINSON**

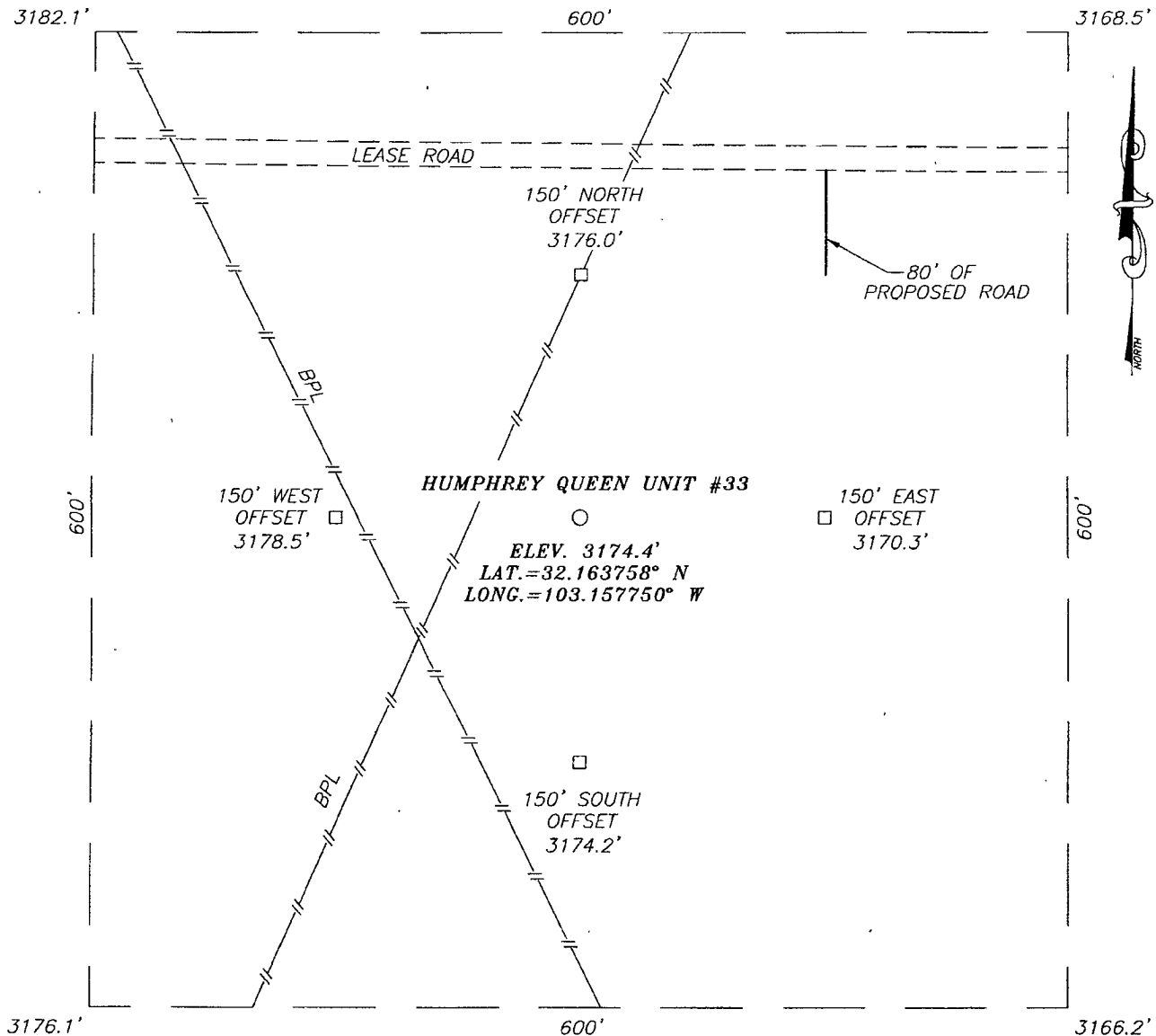
SURVEYOR CERTIFICATION

I hereby certify that the well location shown on this plat was plotted from field notes of actual surveys made by me or under my supervision, and that the same is true and correct to the best of my belief.

SEPTEMBER 24, 2008
Date Surveyed: **SEPTEMBER 24, 2008**
Signature & Seal of Professional Surveyor: **Ronald J. Eidson**
Professional Surveyor No.: **3239**
Date: **10/02/08**

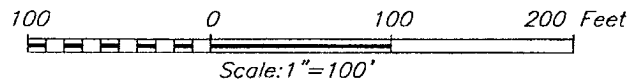
Certificate No. **GARY EIDSON 12641**
RONALD J. EIDSON 3239

SECTION 3, TOWNSHIP 25 SOUTH, RANGE 37 EAST, N.M.P.M.,
 LEA COUNTY, NEW MEXICO



DIRECTIONS TO LOCATION

FROM THE INTERSECTION OF SID RICHARDSON ROAD AND WILLIS ROAD (J4), GO SOUTH ON WILLIS ROAD APPROX. 1.3 MILES. TURN RIGHT AT A LEASE ROAD AND GO SOUTHWEST APPROX. 0.5 MILES TO A LEASE ROAD INTERSECTION. TURN RIGHT AND GO NORTH APPROX. 1 MILE TO AN INTERSECTION; TURN LEFT ON LEASE ROAD AND GO WEST APPROX. 0.4 MILES. THIS LOCATION IS APPROX. 230 FEET SOUTH OF LEASE ROAD.



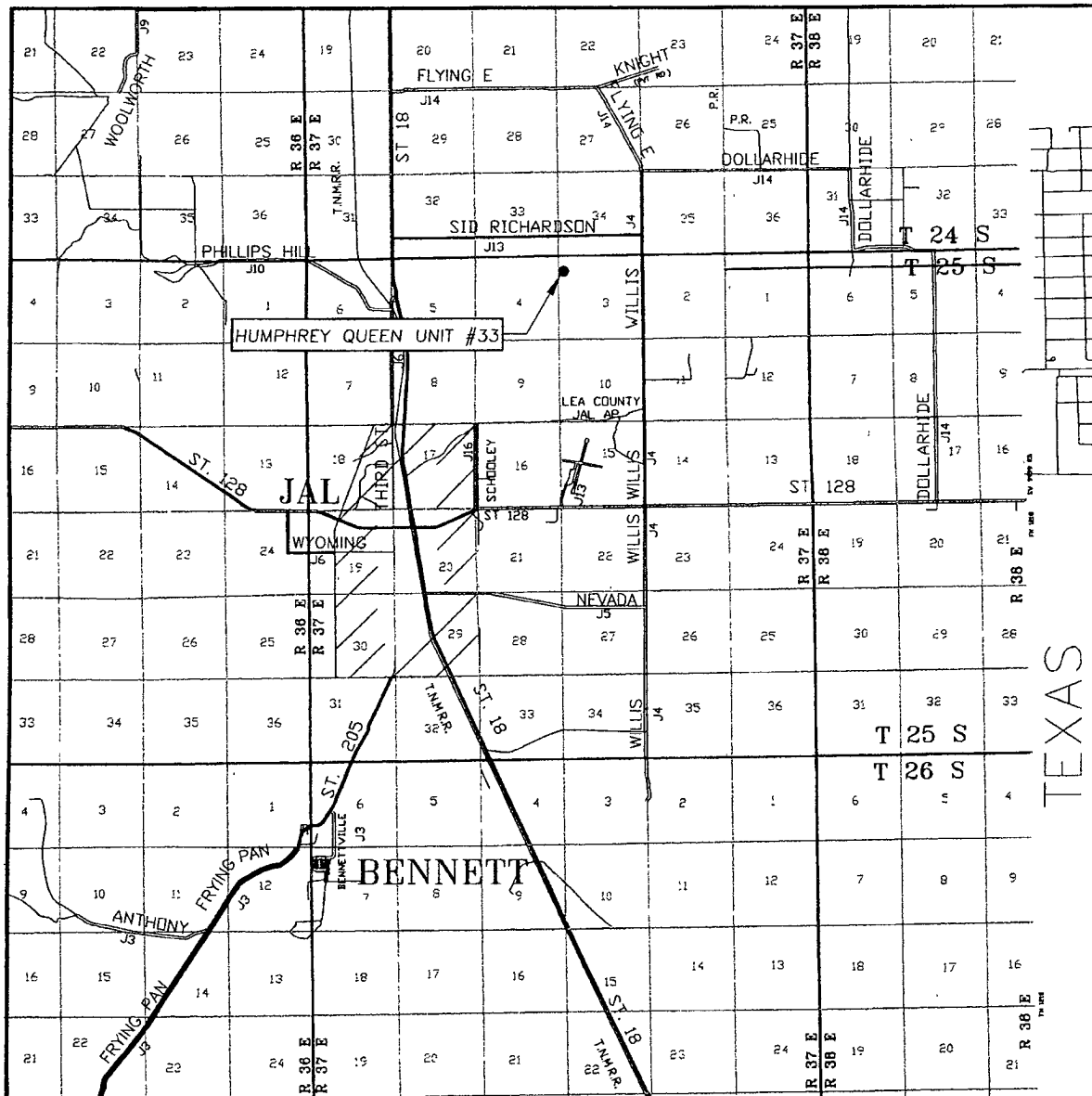
PROVIDING SURVEYING SERVICES
 SINCE 1946
JOHN WEST SURVEYING COMPANY
 412 N. DAL PASO
 HOBBS, N.M. 88240
 (505) 393-3117

ARENA RESOURCES, INC.

HUMPHREY QUEEN UNIT #33 WELL
 LOCATED 990 FEET FROM THE NORTH LINE
 AND 330 FEET FROM THE WEST LINE OF SECTION 3,
 TOWNSHIP 25 SOUTH, RANGE 37 EAST, N.M.P.M.,
 LEA COUNTY, NEW MEXICO.

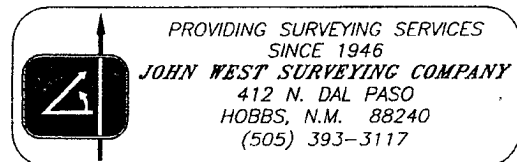
Survey Date: 9/24/08	Sheet 1 of 1 Sheets
W.O. Number: 08.11.1419	Dr By: JC
Date: 10/1/08	08111419
	Scale: 1"=100'

VICINITY MAP

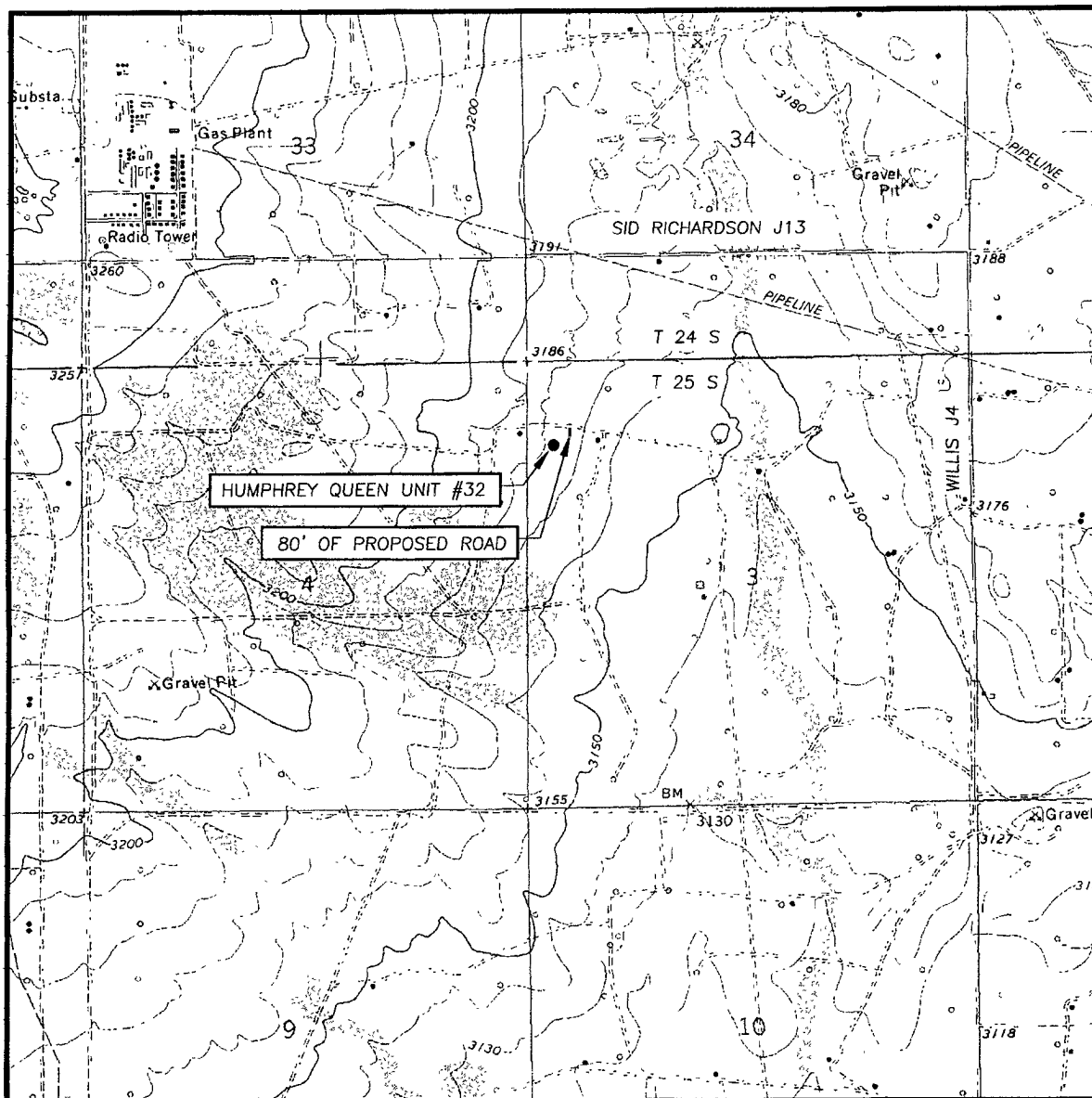


SCALE: 1" = 2 MILES

SEC. 3 TWP. 25-S RGE. 37-E
 SURVEY N.M.P.M.
 COUNTY LEA STATE NEW MEXICO
 DESCRIPTION 990' FNL & 330' FWL
 ELEVATION 3174'
 OPERATOR ARENA RESOURCES, INC.
 LEASE HUMPHREY QUEEN UNIT



LOCATION VERIFICATION MAP



SCALE: 1" = 2000'

CONTOUR INTERVAL:
JAL NW, N.M. - 10'

SEC. 3 TWP. 25-S RGE. 37-E

SURVEY N.M.P.M.

COUNTY LEA STATE NEW MEXICO

DESCRIPTION 990' FNL & 330' FWL

ELEVATION 3174'

OPERATOR ARENA RESOURCES, INC.

LEASE HUMPHREY QUEEN UNIT

U.S.G.S. TOPOGRAPHIC MAP

JAL NW, N.M.

