

UNITED STATES ^{New Mexico Oil Conservation Division, District 1}
DEPARTMENT OF THE INTERIOR ^{1624 N. French Drive}
BUREAU OF LAND MANAGEMENT ^{Hobbs, NM 88240}

approved
OMB No. 1004-0136
Expires November 30, 2000

APPLICATION FOR PERMIT TO DRILL OR REENTER

1a. TYPE OF WORK: ☐ DRILL ☒ REENTER

b. TYPE OF WELL: ☒ OIL WELL ☐ GAS WELL ☐ Other ☐ SINGLE ZONE ☐ MULTIPLE ZONE

2. NAME OF OPERATOR

DEVON ENERGY PRODUCTION COMPANY, L.P.

3a. ADDRESS AND TELEPHONE NO.

20 NORTH BROADWAY, SUITE 1500, OKC, OK 73102

3b. TELEPHONE (Include area code).

(405) 228-7512

4. LOCATION OF WELL (Report location clearly and in accordance with any State requirements)*

At surface 430' FNL & 330' FWL

At top proposed prod. zone 430' FNL & 330' FWL

14. DISTANCE IN MILES AND DIRECTION FROM NEAREST TOWN OR POST OFFICE

24 miles east of Loving, New Mexico

15. DISTANCE FROM PROPOSED LOCATION TO NEAREST PROPERTY OR LEASE LINE, FT.

330'

16. NO. OF ACRES IN LEASE

560.00

18. DISTANCE FROM PROPOSED LOCATION* TO NEAREST WELL, DRILLING, COMPLETED, OR APPLIED FOR, ON THIS LEASE, FT.

1320'

19. PROPOSED DEPTH

8600'

21. ELEVATIONS (Show whether DF, RT, GR, etc.)

3535' GR

22. APPROX. DATE WORK WILL START*

Oct 15, 2003

5. LEASE DESIGNATION AND SERIAL NO.

NMNM77064

6. IF INDIAN, ALLOTTEE OR TRIBE NAME

7. UNIT AGREEMENT NAME

8. FARM OR LEASE NAME, WELL NO.

Mesa Verde 6 Federal #10

9. API WELL NO.

30-025-32751

10. FIELD AND POOL, OR WILDCAT

Mesa Verde Delaware/Bone Spring

11. SEC. T. R. M. OR BLOCK AND SURVEY OR AREA

Sec 6 T24S R32E

12. COUNTY OR PARISH

Lea

13. STATE

NM

17. Spacing Unit dedicated to this well

40

20. BLM/BIA Bond No. on file

CO1104

23. Estimated duration

45 Days

24. Attachments

Carlsbad Controlled Water Basin

The following, completed in accordance with the requirements of Onshore Oil and Gas Order No. 1, shall be attached to this form:

1. Well plat certified by a registered surveyor.
2. A Drilling Plan.
3. A Surface Use Plan (if the location is on National Forest System Lands, the SUPO shall be filed with the appropriate Forest Service Office).

4. Bond to cover the operations unless covered by an existing bond on file (see Item 20 above).
5. Operator certification.
6. Such other site specific information and/or plans as may be required by the authorized officer.

Drilling Program

Surface Use and Operating Plan

Exhibit #1 = Blowout Prevention Equipment

Exhibit #2 = Location and Elevation Plat

Exhibit #3 = Road Map and Topo Map

Exhibit #4 = Wells Within 1 Mile Radius

Exhibit #5 = Production Facilities Plat

Exhibit #6 = Rotary Rig Layout

Exhibit #7 = Casing Design

H₂S Operating Plan

Archeological clearance report

The undersigned accepts all applicable terms, conditions, stipulations and restrictions concerning operations conducted on the leased land or portions thereof, as described above

Bond Coverage: Nationwide
BLM Bond #: CO-1104

APPROVAL SUBJECT TO
GENERAL REQUIREMENTS AND
SPECIAL STIPULATIONS
ATTACHED

25. Signature *Karen Cottom*

Name (Printed/Typed)
KAREN COTTOM

Date
September 4, 2003

Title
OPERATIONS TECHNICIAN

Approved by (signature) */s/ JOE G. LARA*

Name (Printed/Typed)
/s/ JOE G. LARA

Date
NOV 17 2003

Title
FIELD MANAGER

Office
CARLSBAD FIELD OFFICE

Application approval does not warrant or certify that the applicant holds legal or equitable title to those rights in the subject lease which would entitle the applicant to conduct operations thereon.

Conditions of approval, if any, are attached.

APPROVAL FOR 1 YEAR

Title 18 U.S.C. Section 1001, makes it a crime for any person knowingly and willfully to make to any department or agency of the United States any false, fictitious or fraudulent statements or representations as to any matter within its jurisdiction

*(Instructions on reverse)

KZ

REENTRY PROGRAM

Attached to Form 3160-3
Devon Energy Production Company, LP
Mesa Verde 6 Federal #10
430 FNL & 330 FWL
Section 6-T24S R32E
Lea County, New Mexico

1. Geologic Name of Surface Formation

Permian

2. Tops of Important Geologic Markers:

Rustler	930'
Delaware Lime	4600'
Bell Canyon	4580'
Cherry Canyon	5650'
Bone Spring	8500'
Total Depth	8600'

3. Estimated Depth of Anticipated Fresh Water, Oil or Gas:

Water	None expected
Oil	Delaware @ 4600'
	Bone Spring @8500'

4. Casing Program:

<u>Hole Size</u>	<u>Interval</u>	<u>Csg. OD</u>	<u>Weight, Grade, Type</u>
17 1/2", H40	0' - 570'	13 3/8"	48# - existing string
11", K55	0' - 4440'	8 5/8"	24# & 32# - existing string
7 7/8", K55	0' - 8600'	5 1/2"	15.5# & 17#

Cement Program:

13-3/8" Intermediate Casing:	Cemented w/600 sx Class "C". Circulated to surface.
8 5/8" Intermediate Casing:	Cemented w/1200 sx Class "C" circulated to surface.
5 1/2" Production Casing	Cement w/1400 sx 50/50 Cl H Poz = 0.8% Halad + 1/4#/sx Flocele bring cement 200' into intermediate csg

5. Operations Plan - This well was plugged in 1998. A wellbore schematic showing the method of plugging is attached as Exhibit A. The purpose of the following work is to reenter this plugged well to a depth of 8,600' to test the Delaware formation. The reentry work covered under this APD will be performed with a workover rig.

1. MIRU PU. NU WH & NU BOP. RIH & drill out surf plug, 100' plug @620', 100' plug @2340', 200' plug @ 4350' - 4550', 100' plug @6400' & 100' plug @ 8400'.
2. RIH w/5 1/2", K55, 15.5# & 17# LT&C csg set @ 8600', cement w/ 1400sx 50/50 Class H Poz + 0.8% Halad + 1/4#/sx Flocele bringing cement 200' into intermediate csg.
3. Test Lower Brushy Canyon evaluate for stimulation & frac procedures.
4. RIH w/MA, perf sub, SN, 56 jts 2 7/8" 6.5# N-80 tbg, TA, & 2 7/8" tbg. ND BOP, set TA, & NU WH.
RIH w/pump & rods. Hang well on

6. Minimum Specifications for Pressure Control:

- a. The blowout preventor equipment (BOP) shown in Exhibit #1 will consist of a (3M system) double ram type preventor. The BOP will be mechanically operated and it will be equipped with blind rams on top and 2-7/8" drill pipe rams on bottom. Other accessory BOP equipment will include a safety valve.

7. Types and Characteristics of the Proposed Mud System:

- a. Fresh water will be used to drill out the cement plugs.

8. Auxiliary Well Control and Monitoring Equipment:

- a. A Full opening Safety Valve will be in the drill string at all times.

9. Logging, Testing and Coring Program:

- a. No additional logs will be ran.

10. Abnormal Pressure, Temperatures and Potential Hazards:

- a. No abnormal pressures or temperatures are anticipated during the proposed operations.

11. Anticipated Starting Date and Duration of Operations:

- a. The anticipated start date is approximately October 1, 2003. The reentry operations should require approximately 45 days.

SURFACE USE AND OPERATING PLAN

1. Existing Roads:

- a. Exhibit 2 is a 7.5 minute topographic map that shows the location of the wellsite and roads in the vicinity. The location is situated approximately 35 miles Southeast of Carlsbad, New Mexico.
- b. Direction to location: From the intersection of State Hwy 128 & Hwy 31, (east of Carlsbad, NM) go east on Hwy 128 for 19 miles. Turn left (northeast) onto caliche road, go northeast for 1.0 mile and turn left for 0.5 miles to the Mesa Verde 6 Federal #14 location. The location is 1320' west of the existing #14 location

2. Access Road:

- a. Access to this location will not require any new access roads. The area is covered under the original Archeological report. All new construction will adhere to the following specifications:
- b. The maximum width of the road will be 15'. It will be crowned and made of 6" of rolled and compacted caliche. Water will be deflected, as necessary, to avoid accumulation and prevent surface erosion.
- c. Surface material will be native caliche. This material will be obtained from a BLM approved pit nearest in proximity to the location. The average grade will be approximately 1%.
- d. No cattle guards, grates or fence cuts will be required. No turnouts are planned.

3. Location of Existing Wells:

- a. Exhibit #3 shows all existing wells within a one-mile radius of the referenced well.

4. Location of Existing and/or Proposed Facilities:

- a. The proposed operations will be contained to the original location that was constructed when the well was originally drilled. All power and flowlines will follow existing lease road.

5. Location and Type of Water Supply:

- a. It is planned to clean out the well with a fresh water system. Water will be hauled to the location by truck over existing roads and will be obtained from commercial sources.

6. Methods of Handling Water Disposal:

- a. Cement cuttings will be disposed into the reserve pit.
- b. Drilling fluids will be allowed to evaporate in the reserve pits until the pits are dry.
- c. Water produced during operations will be either placed in the reserve pits and allowed to evaporate or collected in tanks until hauled to an approved disposal system or a separate disposal application will be submitted to the BLM for appropriate approval.
- d. Oil produced during operations will be stored in tanks until sold.

- e. Garbage, trash and waste paper produced during drilling operations will be collected in a contained trailer and disposed at an approved landfill. All waste material will be contained to prevent scattering by the wind. All water, fluids, salt or other chemicals will be disposed in the reserve pit. No toxic waste or hazardous chemicals will be generated by this operation.
- f. All waste material will be removed within 30 days after the well is either completed or abandoned. The reserve pit will be completely fenced until it has dried. At the point the reserve pit is found sufficiently dry, it will be backfilled and reclaimed as outlined by the BLM specifications. Only the portion of the drilling pad used by the production equipment (pumping unit and tank battery) will remain in use. If the well is deemed non-commercial, only a dry hole marker will remain.

7. Ancillary Facilities:

- a. No campsite or other facilities will be constructed as a result of this well.

8. Well Site Layout:

- a. Exhibit 4 shows the dimensions of the well pad and reserve pit, and the location of major rig components.
- b. No permanent living facilities are planned, but temporary trailers may be on location throughout drilling operations.
- c. The reserve pit will be lined using plastic sheeting of 5-7 mil thickness.

9. Plans for Restoration of Surface:

- a. If it is determined to be noncommercial the location and road will be rehabilitated as recommended by the BLM. The reserve pit area will be broken out and leveled after drying to a condition where these efforts are feasible. The original topsoil will again be returned to the pad and contoured, as close as possible, to the original topography.
- b. The pit lining will be buried or hauled away in order to return the location and road to their pristine nature. All pits will be filled and location leveled, weather permitting, within 120 days after abandonment.

10. Surface Ownership:

- a. The well site is owned by the Bureau of Land Management.
- b. Access to the site uses existing roads.

11. Other Information:

- a. The wellsite and access route are located in a relatively flat area.
- b. No wildlife was observed but it is likely that deer, rabbits, coyotes and rodents traverse the area.

12. Lessee's and Operator's Representative:

The Devon Energy Production Company, LP representatives responsible for assuring compliance of the surface use plan are:

Jim Blount
Operations Engineering Advisor

Joe Handley
Production Foreman

Devon Energy Production Company, LP
20 North Broadway
Ste 1500
Oklahoma City, OK 73102

Devon Energy Production Company, LP
2401 Pecos Avenue
Artesia, NM 88210


Phone:
(405) 228-4301 Office
(405) 834-9207 Mobile

(505) 748 5232 Mobile
(505) 748-3371 Office
(505) 748-5292 Home

Certification:

I hereby certify that I, or persons under my direct supervision, have inspected the well site and access road; that I am familiar with the conditions that presently exist; that the statements made in this plan are, to the best of my knowledge, true and correct; and that the work associated with the operations proposed herein will be performed by Devon Energy Production Company, LP and its contractors and subcontractors in conformity with this plan and the terms and conditions under which it is approved.

Date: 9-5-03

Signed: 
Jim Blount
Operation Engineering Advisor

UNITED STATES DEPARTMENT OF THE INTERIOR
Bureau of Land Management
Roswell Field Office
2909 West Second Street
Roswell, New Mexico 88201-1287

Statement Accepting Responsibility for Operations

Operator Name: **Devon Energy Production Company, LP**
Street or Box: **20 North Broadway, Suite 1500**
City, State: **Oklahoma City, Oklahoma**
Zip Code: **73102-8260**

The undersigned accepts all applicable terms, conditions, stipulations and restrictions concerning operations conducted on the leased land or portion thereof, as described below.

Lease No.: **NM-77064**

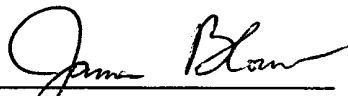
Legal Description of Land: **40 acres 6-T24S - R32E**

Formation(s): **Mesa Verde Delaware/Bone Spring**

Bond Coverage: **Nationwide**

BLM Bond File No.: **CO-1104**

Authorized Signature:


Jim Blount

Title: **Operations Engineering Advisor**

Date: **9/4/03**

DISTRICT I
P. O. Box 1980
Hobbs, NM 88241-1980

DISTRICT II
P. O. Drawer DD
Artesia, NM 88211-0719

DISTRICT III
1000 Rio Brazos Rd.
Aztec, NM 87410

DISTRICT IV
P. O. Box 2088
Santa Fe, NM 87507-2088

State of New Mexico
Ener. Minerals, and Natural Resources De. tment

Form C
Revised 02-11

Instructions on

Submit to the Approp
District Office
State Lease - 4 cop
Fee Lease - 3 copie

OIL CONSERVATION DIVISION

P. O. Box 2088
Santa Fe, New Mexico 87504-2088

☐ AMENDED REP.

WELL LOCATION AND ACREAGE DEDICATION PLAT

1 API Number 30-025-32151		2 Pool Code 96036 96/91		3 Pool Name 96191 96229 Mesa Verde Delaware/Bone Spring			
4 Property Code 30872		5 Property Name MESA VERDE '6' FEDERAL				6 Well Number 10	
7 OGRID No. 6137		8 Operator Name DEVON ENERGY PRODUCTION COMPANY, LP				9 Elevation 3535'	

10 SURFACE LOCATION

UL or lot no.	Section	Township	Range	Lot Ida	Feet from the	North/South line	Feet from the	East/West line	Coun
D	6	24 SOUTH	32 EAST, N.M.P.M.		430'	NORTH	330'	WEST	LEA

"BOTTOM HOLE LOCATION IF DIFFERENT FROM SURFACE

UL or lot no.	Section	Township	Range	Lot Ida	Feet from the	North/South line	Feet from the	East/West line	Coun

12 Dedicated Acres 40	13 Joint or Infill	14 Consolidation Code	15 Order No.
--------------------------	--------------------	-----------------------	--------------

NO ALLOWABLE WELL BE ASSIGNED TO THIS COMPLETION UNTIL ALL INTERESTS HAVE BEEN
CONSOLIDATED OR A NON-STANDARD UNIT HAS BEEN APPROVED BY THE DIVISION

The diagram shows a well location on a survey plat. A dashed line indicates the well location, with dimensions of 430' and 330' shown. The plat is divided into sections by dashed lines.

OPERATOR CERTIFICATION

I hereby certify that the informati
contained herein is true and compl
to the best of my knowledge and bel

Signature
James Blount
Printed Name
James Blount
Title
Operations Engineering Ad
Date
9/4/03

SURVEYOR CERTIFICATION

I hereby certify that the we
location shown on this plat we
plotted from field notes of actu
surveys made by me or unde
my supervision, and that th
same is true and correct to th
best of my belief.

Date of Survey
NOVEMBER 11, 1997
Signature and Seal of
Professional Surveyor
Roger M. Robbins
Certificate No.
ROGER M. ROBBINS P.S. #121

LEA COUNTY, NEW MEXICO

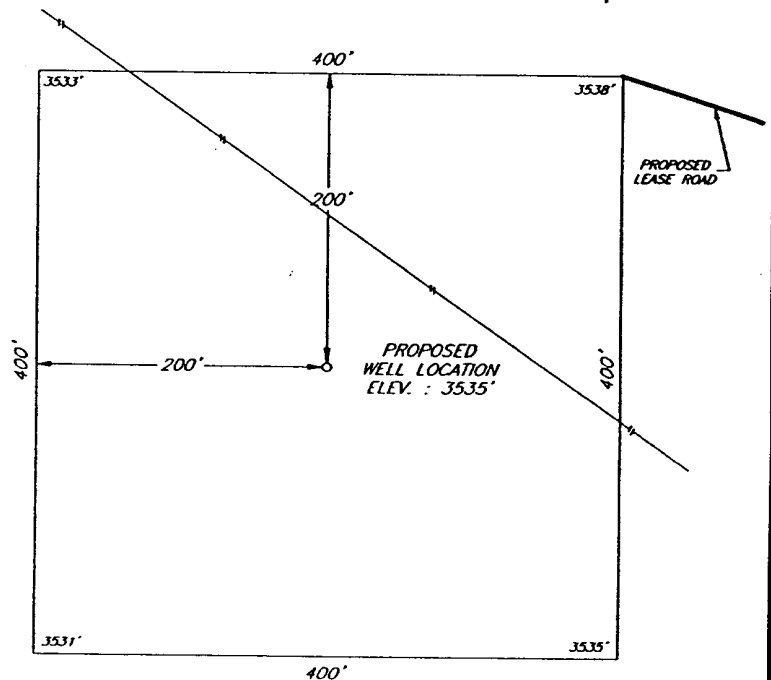
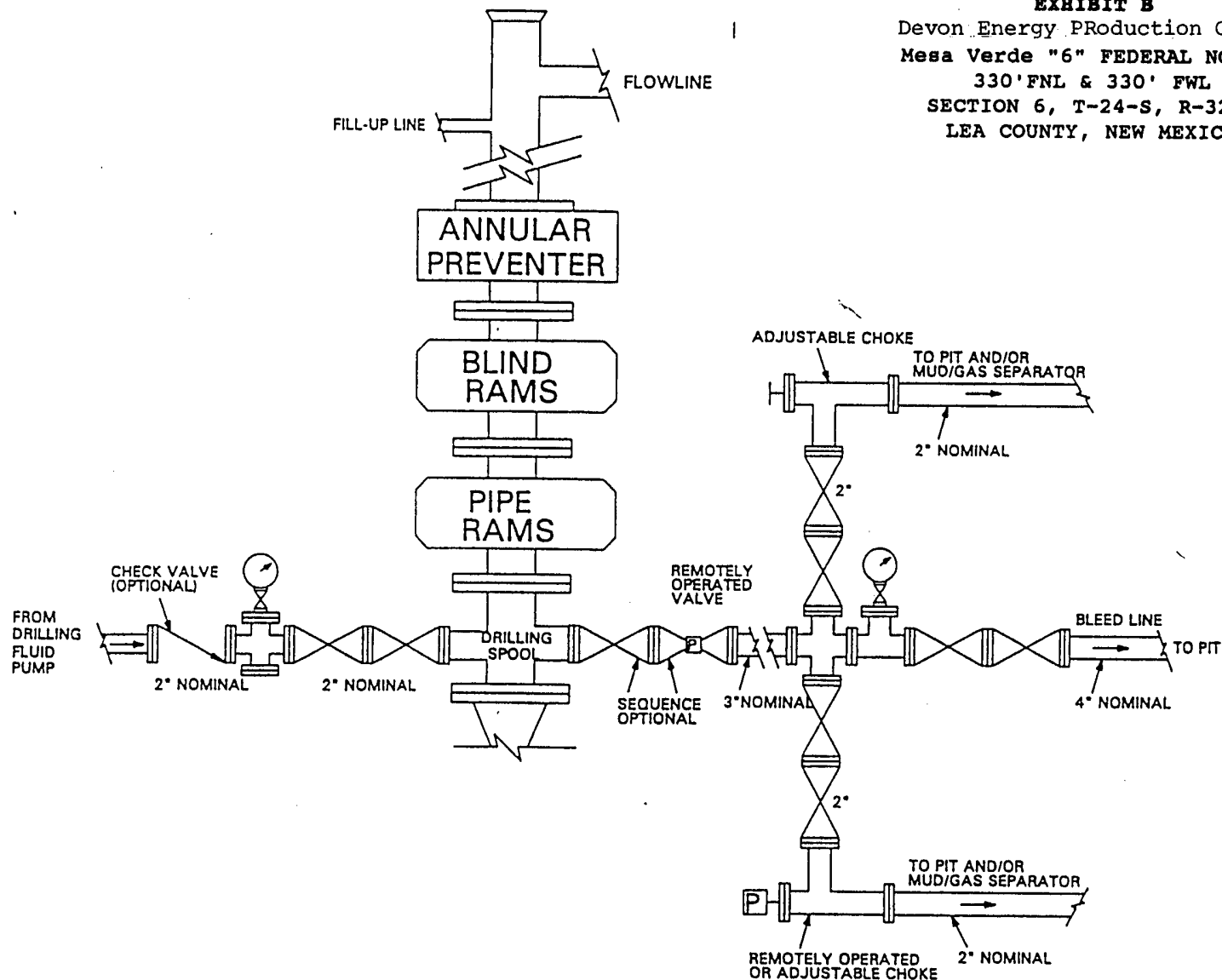
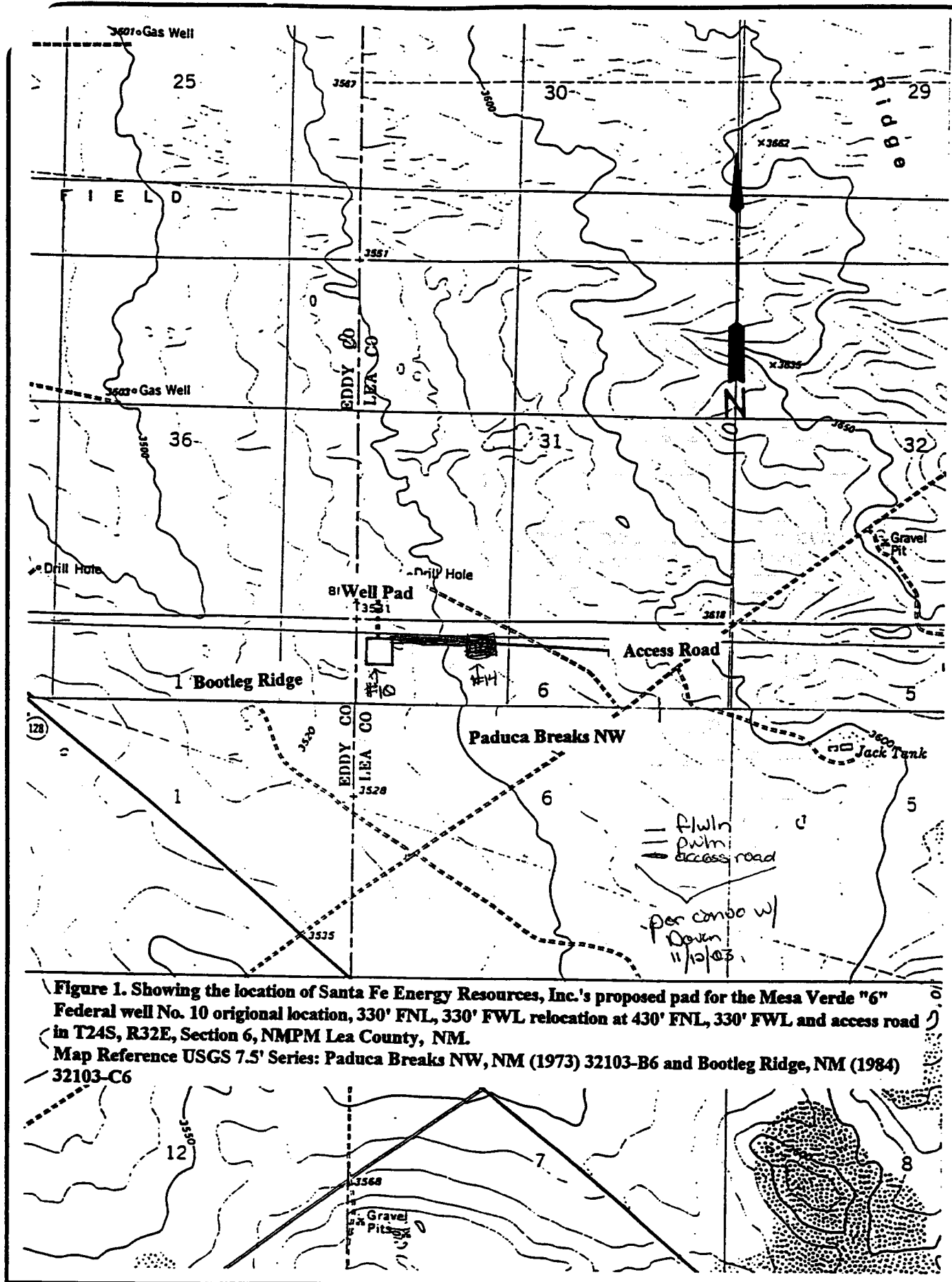
[illegible]

EXHIBIT B

Devon Energy Production Company, LP
Mesa Verde "6" FEDERAL NO. 10
330' FNL & 330' FWL
SECTION 6, T-24-S, R-32-E
LEA COUNTY, NEW MEXICO





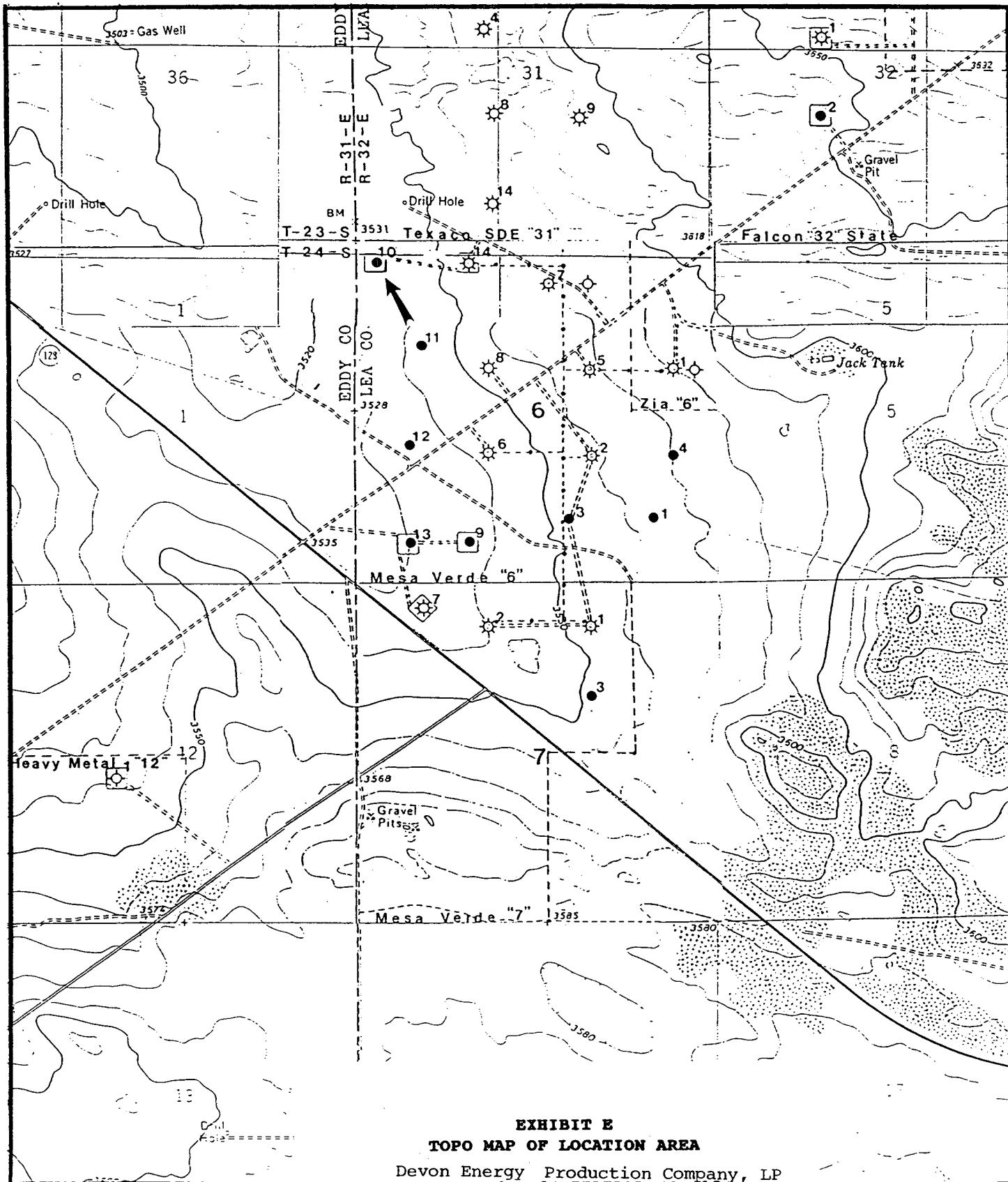


EXHIBIT E
TOPO MAP OF LOCATION AREA

Devon Energy Production Company, LP
 Mesa Verde "6" FEDERAL NO. 10
 1130' FNL & 330' FWL
 SECTION 6, T-24-S, R-32-E
 LEA COUNTY, NEW MEXICO

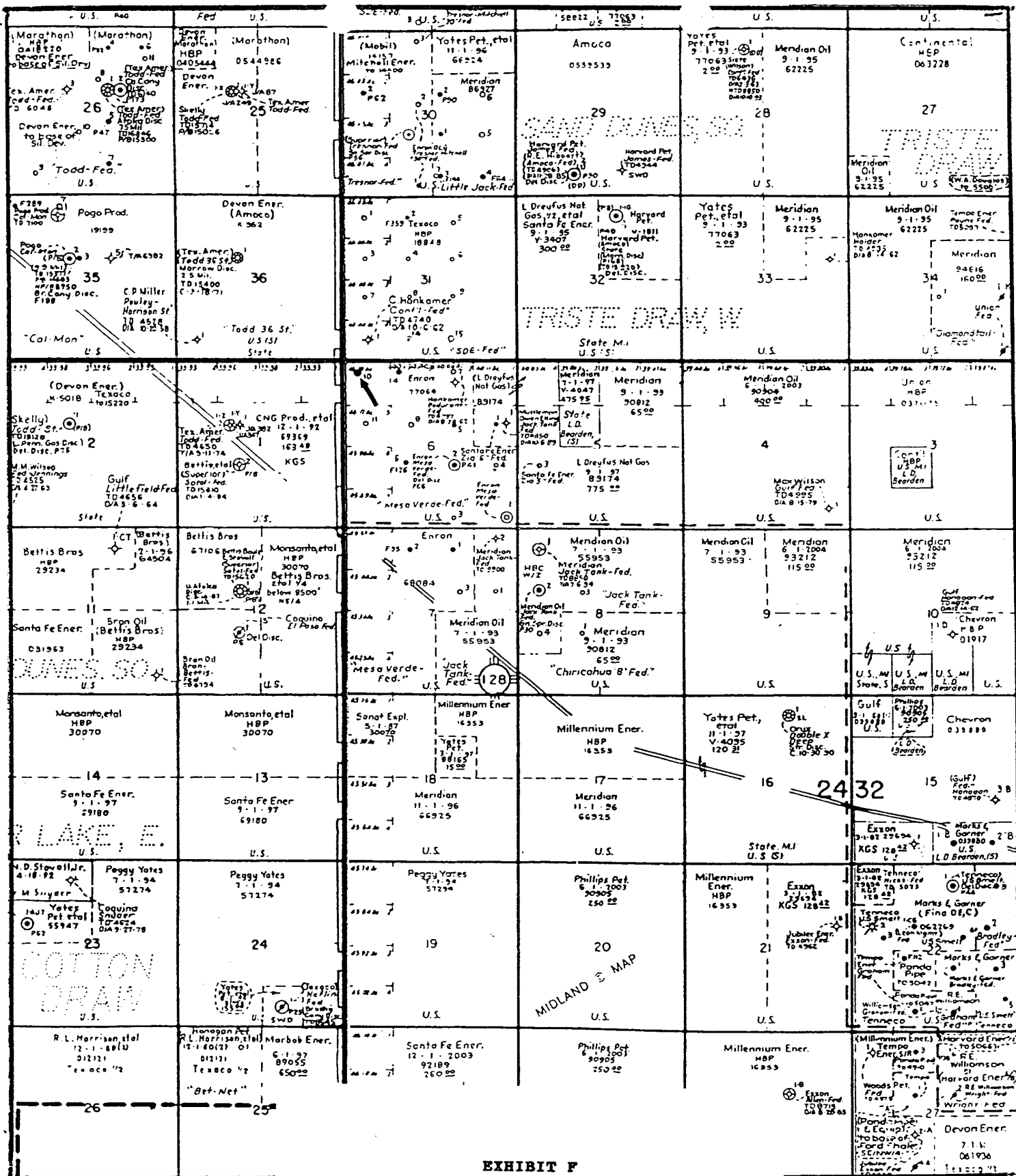
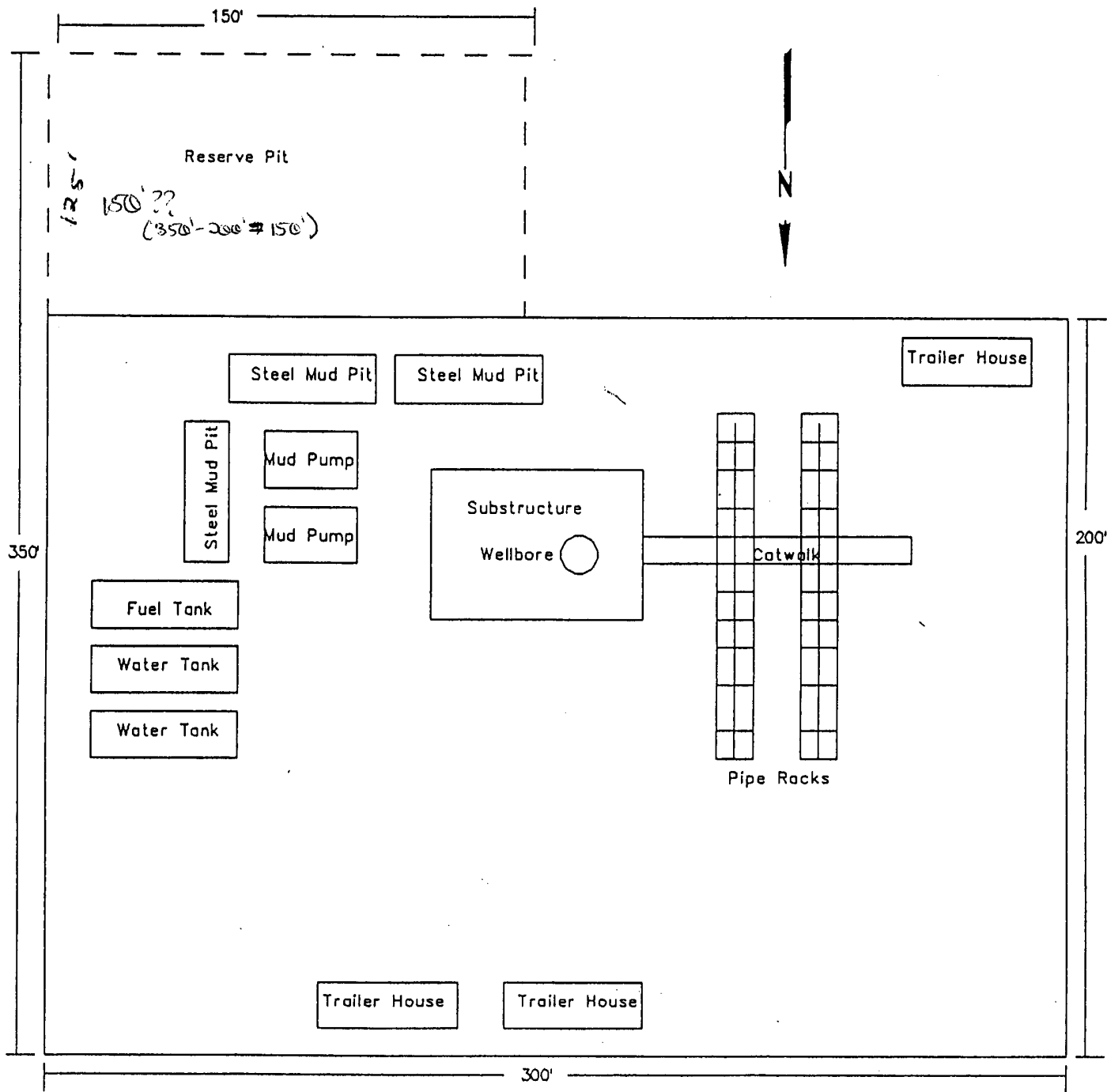


EXHIBIT F EXISTING WELLS

Devon Energy Production Company, LP
Mesa Verde "6" FEDERAL NO. 10
SECTION 6, T-24-S, R-32-E
LEA COUNTY, NEW MEXICO

All
 1/17/17 400'

EXHIBIT G
WELL SITE LAYOUT
 Devon Energy Production Company, LP
 Mesa Verde "6" FEDERAL NO. 10
 430' ~~330'~~ FNL & 330' FWL
 SECTION 6, T-24-S, R-32-E
 LEA COUNTY, NEW MEXICO



Field Name: Mesa Verde
Operator: Devon Energy
Location: Lea County, NM
Sec 6, T24S, R32E

Pool: Delaware, Bone Spring
WELL: Mesa Verde "6" Fed 10
API #: 30-025-32751

CURRENT ☒

PROPOSED ☐

Spud Date: 12/18/97

Plugged & Abandoned: 1/6/98

13-3/8", 48#, @ 570'
17-1/2" hole, cmt'd w/ 600 sks

8-5/8", 24# & 32#, K55, @ 4440'
11" hole, cmt'd w/ 1200 sks

5-1/2", J55, 15.5# @ 3814'
Cm'td w/ 650 skx

TD @ 8660' (1/4/98)

50' Cement plug to surface

100' Cement Plug @ 620'

100' Cement Plug @ 2340'

200' Cement Plug @ 4350' - 4550'

100' Cement Plug @ 6400'

100' Cement Plug @ 8400'

R.Slack 9/4/03