

District I  
1625 N French Dr. Hobbs, NM 88240

District II  
1301 W Grand Avenue, Artesia, NM 88210

District III  
1000 Rio Brazos Road, Aztec, NM 87410

District IV  
1220 S St. Francis Dr., Santa Fe, NM 87505

RECEIVED

State of New Mexico

Energy Minerals and Natural Resources

Form C-101  
June 16, 2001

NOV 06 2009

HOBBSDOCD

Oil Conservation Division

1220 South St. Francis Dr.  
Santa Fe, NM 87505

RECEIVED

Submit to appropriate District Office

☐ AMENDED REPORT

NOV -4 2009

NMOCD ARTESIA

**APPLICATION FOR PERMIT TO DRILL, RE-ENTER, DEEPEN,  
PLUGBACK, OR ADD A ZONE**

<sup>1</sup> Operator Name and Address V-F Petroleum, Inc. P.O. Box 1889 Midland, TX 79702		<sup>2</sup> OGRID Number 24010
		<sup>3</sup> API Number 30 - 025-22157
<sup>3</sup> Property Code 37923	<sup>5</sup> Property Name Gross	<sup>6</sup> Well No. 2
<sup>9</sup> Proposed Pool 1 Vada Upper Penn		<sup>10</sup> Proposed Pool 2

**Surface Location**

UL or lot no	Section 15	Township 10S	Range 33E	Lot Idn	Feet from the 1980'	North/South line North	Feet from the 2130'	East/West line West	County Lea
--------------	---------------	-----------------	--------------	---------	------------------------	---------------------------	------------------------	------------------------	---------------

**Proposed Bottom Hole Location If Different From Surface**

UL or lot no	Section	Township	Range	Lot Idn	Feet from the	North/South line	Feet from the	East/West line	County
--------------	---------	----------	-------	---------	---------------	------------------	---------------	----------------	--------

**Additional Well Information**

<sup>11</sup> Work Type Code E	<sup>12</sup> Well Type Code O	<sup>13</sup> Cable/Rotary R	<sup>14</sup> Lease Type Code State	<sup>15</sup> Ground Level Elevation 4,198' GL
<sup>16</sup> Multiple No	<sup>17</sup> Proposed Depth 9,650'	<sup>18</sup> Formation Bough "C"	<sup>19</sup> Contractor Basic	<sup>20</sup> Spud Date ASAP

**Proposed Casing and Cement Program**

Hole Size	Casing Size	Casing weight/foot	Setting Depth	Sacks of Cement	Estimated TOC
15 1/2"	12 1/4" Existing	36#	350' +/-	350 sx "C"	surface
11"	8 5/8" Existing	32#	3,880'	300 sx "C"	2,900'e
7 7/8"	5 1/2" Existing	17#	9,640'	250 sx "C"	8,300'

<sup>22</sup> Describe the proposed program. If this application is to DEEPEN or PLUG BACK, give the data on the present productive zone and proposed new productive zone. Describe the blowout prevention program, if any. Use additional sheets if necessary.

V-F Petroleum, Inc. is proposing to re-enter the above captioned well with a Basic Well Service and reverse unit and a closed loop mud system. A 5,000# BOP will be installed on the 12 3/4" casing and both BOP & casing will be tested to 1,000# PSI. Drill cement plugs at surface and, 303' and 644'. Tie 8 5/8" casing back to surface using over shoe plus 200 sacks of cement. Drill cement plugs 3,829', 5,114' and 5,394'. Condition hole and dress off 5 1/2" casing @ 5,946'. Run 5 1/2" 17# casing with lead seal casing bowl. Tie 5 1/2" casing back to surface. Nipple up on 5 1/2" casing. Test to 2,000# PSI. Drill out cement and CIBP @ 9,500". Swab test perforations 9,561' - 9570'. Install artificial lift equipment and tank battery. See attached exhibit.

**Permit Expires 2 Years From Approval  
Date Unless Drilling Underway**

<sup>23</sup> I hereby certify that the information given above is true and complete to the best of my knowledge and belief.

Signature:

*George R. Smith*

Printed name: George R. Smith

Title: POA Agent for V-F Petroleum, Inc

E-mail Address

gr.smith1@hotmail.com

Date: 11/03/09

Phone

575-623-4940

Approved by:

Title

**PETROLEUM ENGINEER**

Approval Date:

NOV 10 2009

Expiration Date:

Conditions of Approval Attached ☐

# RECEIVED

NOV 06 2009  
HOBBSDOCD

## NEW MEXICO OIL CONSERVATION COMMISSION WELL LOCATION AND ACREAGE DEDICATION PLAT

Form C-102  
Supersedes C-128  
Effective 1-1-65

All distances must be from the outer boundaries of the Section.

Operator <b>V-F Petroleum Inc.</b>			Lease <b>GROSS</b>		Well No. <b>2</b>
Unit Letter <b>F</b>	Section <b>15</b>	Township <b>10 SOUTH</b>	Range <b>33 EAST</b>	County <b>LEA</b>	
Actual Footage Location of Well: <b>1980</b> feet from the <b>NORTH</b> line and <b>2130</b> feet from the <b>WEST</b> line					
Ground Level Elev. <b>4198.0</b>	Producing Formation <b>Bough "C"</b>	Pool <b>Vada Upper Penn</b>		Dedicated Acreage <b>80</b> <b>160</b>	Acres

1. Outline the acreage dedicated to the subject well by colored pencil or hatchure marks on the plat below.
2. If more than one lease is dedicated to the well, outline each and identify the ownership thereof (both as to working interest and royalty).
3. If more than one lease of different ownership is dedicated to the well, have the interests of all owners been consolidated by communitization, unitization, force-pooling, etc?

☐ Yes ☐ No If answer is "yes," type of consolidation \_\_\_\_\_

If answer is "no," list the owners and tract descriptions which have actually been consolidated. (Use reverse side of this form if necessary.) \_\_\_\_\_

No allowable will be assigned to the well until all interests have been consolidated (by communitization, unitization, forced-pooling, or otherwise) or until a non-standard unit, eliminating such interests, has been approved by the Commission.

### CERTIFICATION

I hereby certify that the information contained herein is true and complete to the best of my knowledge and belief.

Name **Wayne Luna**  
Position **Production Superintendent**  
Company **V-F Petroleum Inc.**  
Date **9/10/09**

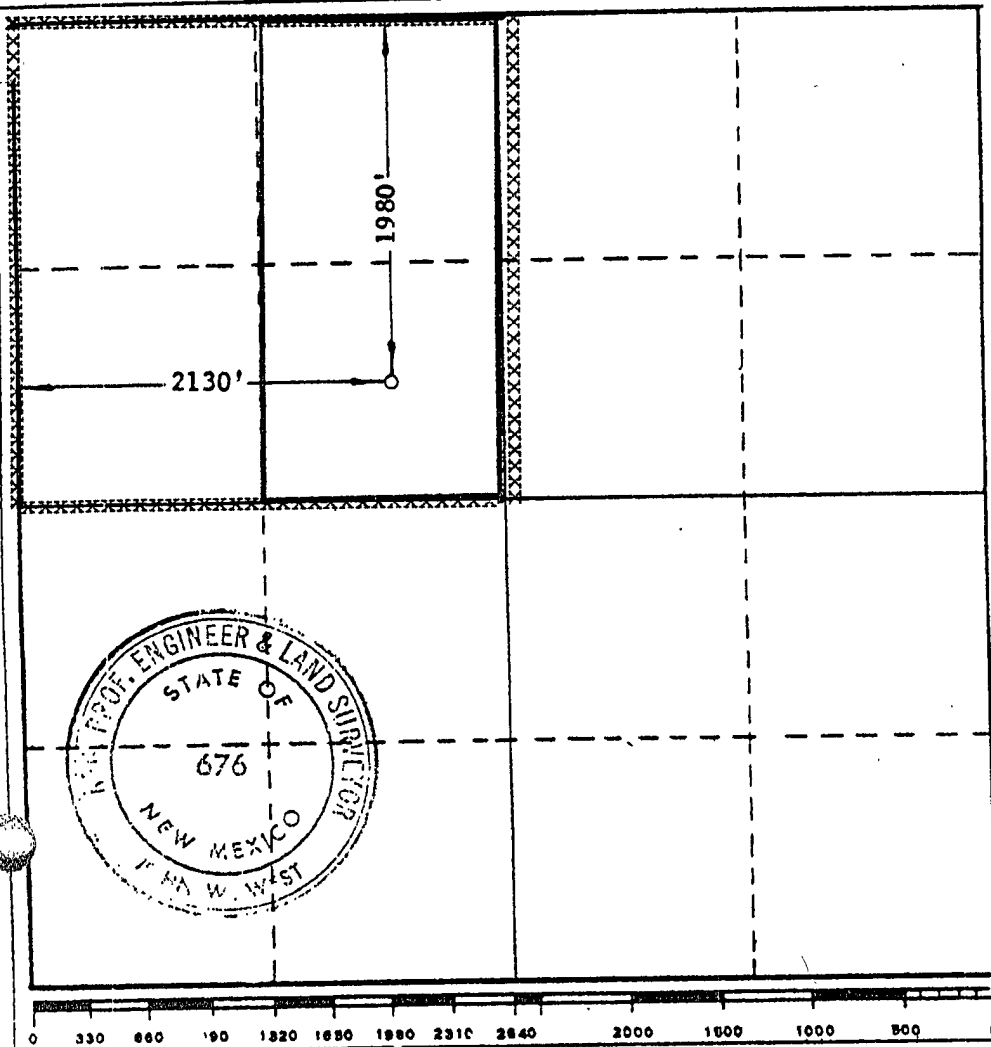
I hereby certify that the well location shown on this plat was plotted from field notes of actual surveys made by me or under my supervision, and that the same is true and correct to the best of my knowledge and belief.

Date Surveyed  
**6/8/67.**

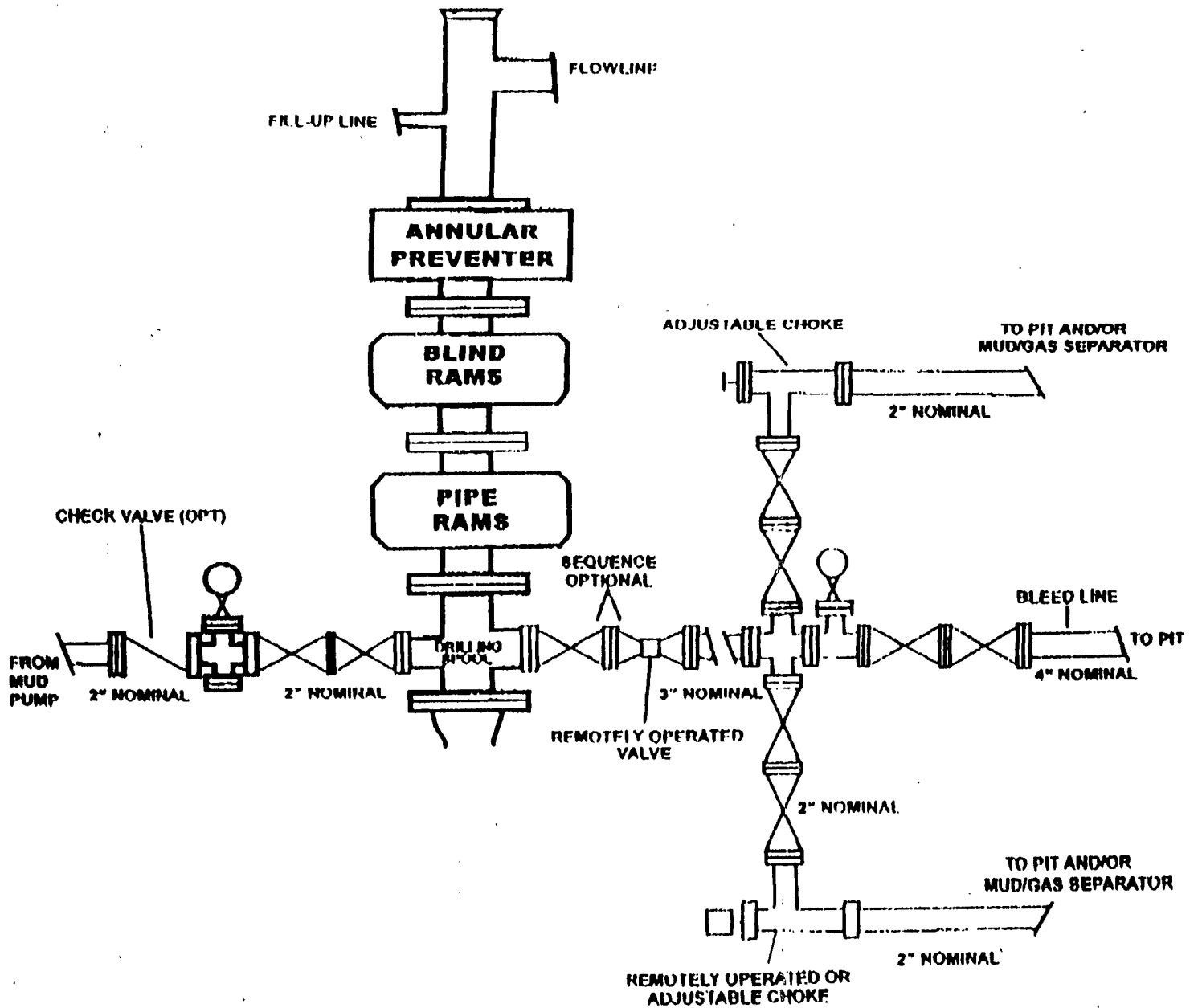
Registered Professional Engineer and/or Land Surveyor

**John W West**  
Certificate No.

**676**



## BOP DIAGRAM 3000# SYSTEM



cat

10' surface Plug

80 SX Plug 303'-403'

8 5/8" cut & Pelled 904'

56 SX Plug 644'-744'

35 SX Plug 3829'-3933'

35 SX Plug 5114'-5229'

35 SX Plug 5394'-5509'

COULD NOT GET TUBING below 5509'

5 1/2" cut & Pelled 5976'

completion 8-7-67 384 oil & 76 w.

Kobe Pump 8-25-67

Flowing 9-20-68

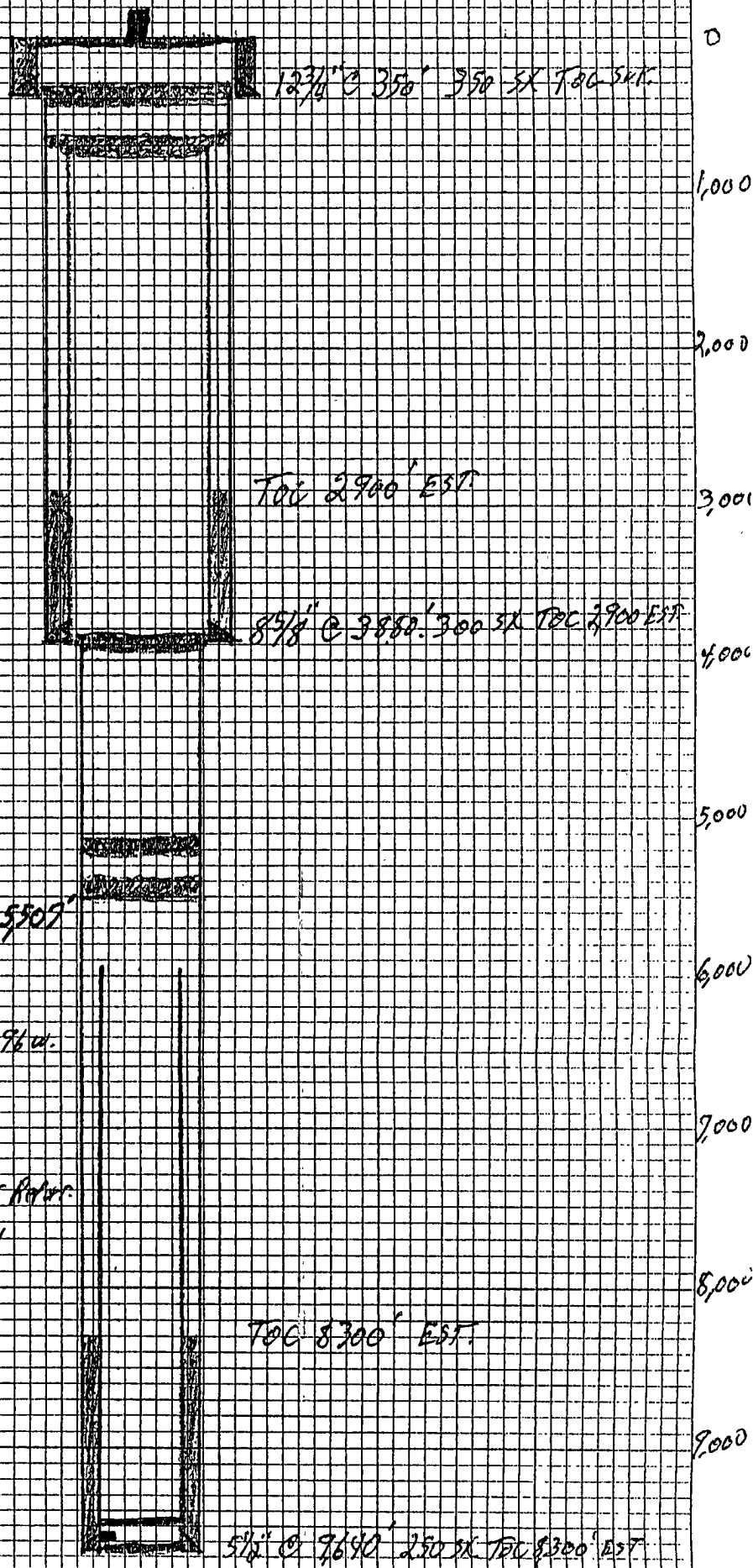
Dead 11-30-71 Flow Returns 1985 Refr.

Dead from 4-30-70 TO 11-30-71

Did NOT put on Rod Pump?

GELP 9500' + 25' cut

Perms 9500' to 10' 18 holes



TN  
★  
MN  
8.9°E