

RECEIVED

## DISTRICT I

1625 N. FRENCH DR., HOBBS, NM 88240

## DISTRICT II

1301 W. GRAND AVENUE, ARTESIA, NM 88210

## DISTRICT III

1000 Rio Brasos Rd., Aztec, NM 87410

## DISTRICT IV

1220 S. ST. FRANCIS DR., SANTA FE, NM 87505

State of New Mexico

Energy, Minerals and Natural Resources Department

JUL 16 2010

## OIL CONSERVATION DIVISION

1220 SOUTH ST. FRANCIS DR.

Santa Fe, New Mexico 87505

HOBBSOCD

Form C-102

Revised October 12, 2005

Submit to Appropriate District Office

State Lease - 4 Copies

Fee Lease - 3 Copies

## WELL LOCATION AND ACREAGE DEDICATION PLAT

☐ AMENDED REPORT

API Number <b>30-025-39834</b>	Pool Code <b>50350</b>	Pool Name <i>Dennis Shelly Grayburg</i>
Property Code <b>2690</b>	Property Name <b>W.T. MCCOMACK</b>	Well Number <b>30</b>
OCRID No. <b>4373</b>	Operator Name <b>CHEVRON USA INC.</b>	Elevation <b>3454'</b>

## Surface Location

UL or lot No.	Section	Township	Range	Lot Idn	Feet from the	North/South line	Feet from the	East/West line	County
<b>1</b>	<b>32</b>	<b>21-S</b>	<b>37-E</b>		<b>1515</b>	<b>SOUTH</b>	<b>330</b>	<b>EAST</b>	<b>LEA</b>

## Bottom Hole Location If Different From Surface

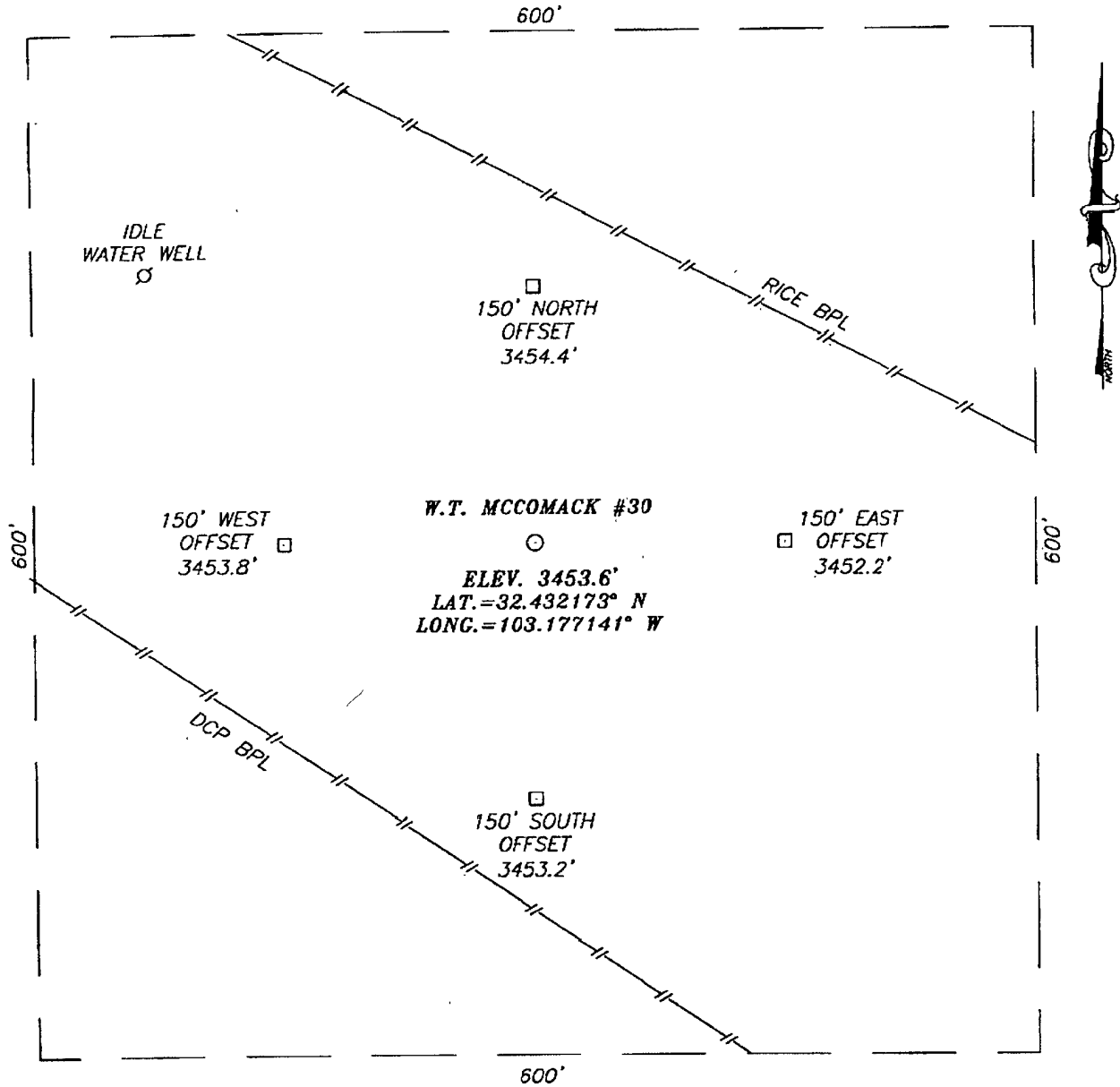
UL or lot No.	Section	Township	Range	Lot Idn	Feet from the	North/South line	Feet from the	East/West line	County

Dedicated Acres	Joint or Infill	Consolidation Code	Order No.
<b>40</b>			<b>NSL-6017</b>

NO ALLOWABLE WILL BE ASSIGNED TO THIS COMPLETION UNTIL ALL INTERESTS HAVE BEEN CONSOLIDATED  
OR A NON-STANDARD UNIT HAS BEEN APPROVED BY THE DIVISION

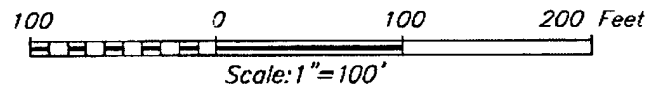
<p>GEODETIC COORDINATES NAD 27 NME</p> <p>Y=522868.8 N X=856732.5 E</p> <p>LAT.=32.432173° N LONG.=103.177141° W</p>	<p><b>OPERATOR CERTIFICATION</b></p> <p>I hereby certify that the information herein is true and complete to the best of my knowledge and belief, and that this organization either owns a working interest or unleased mineral interest in the land including the proposed bottom hole location or has a right to drill this well at this location pursuant to a contract with an owner of such mineral or working interest, or to a voluntary pooling agreement or a compulsory pooling order heretofore entered by the division.</p> <p><i>Dennis Pinkerton</i> 7-15-10 Signature _____ Date _____ Printed Name _____</p>
	<p><b>SURVEYOR CERTIFICATION</b></p> <p>I hereby certify that the well location shown on this plat was plotted from field notes of actual surveys made by me or under my supervision, and that the same is true and correct to the best of my belief.</p> <p><i>Ronald J. Eidson</i> Signature &amp; Seal of Professional Surveyor Date Surveyed _____ Signature _____ Professional Surveyor</p>
	<p>Certificate No. GARY EIDSON 12641 RONALD J. EIDSON 3239</p>

**SECTION 32, TOWNSHIP 21 SOUTH, RANGE 37 EAST, N.M.P.M.,**  
LEA COUNTY, NEW MEXICO



**DIRECTIONS TO LOCATION**

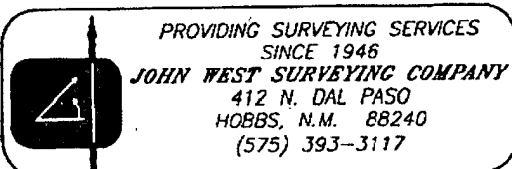
FROM THE INTERSECTION OF TEXAS ST. AND  
LEGION RD., GO SOUTH ON LEGION ROAD APPROX.  
0.2 MILES. THIS LOCATION IS APPROX. 300 FEET  
WEST OF RIGHT OF WAY FENCE.



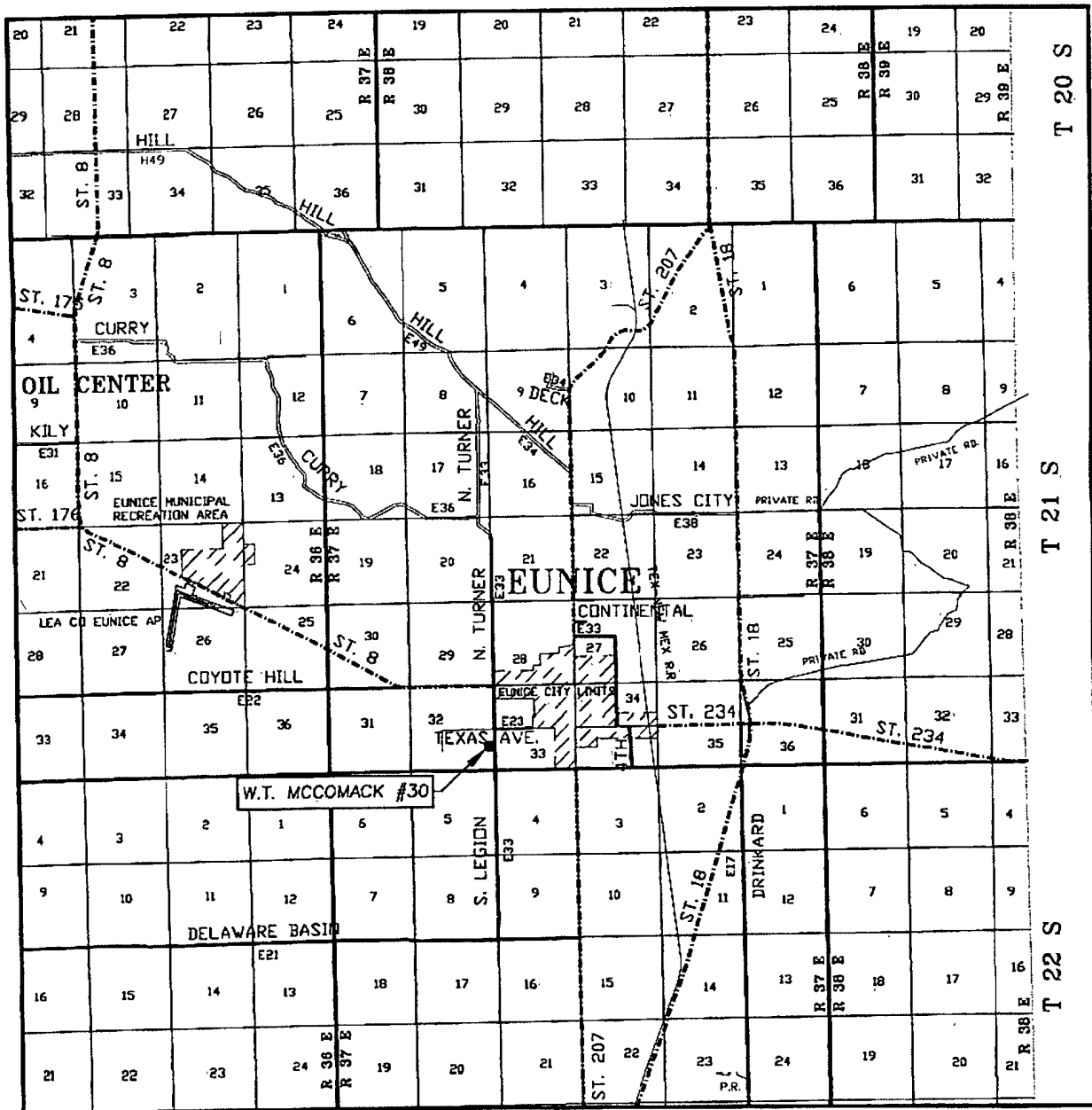
**CHEVRON USA INC.**

W.T. MCCOMACK #30 WELL  
LOCATED 1515 FEET FROM THE SOUTH LINE  
AND 330 FEET FROM THE EAST LINE OF SECTION 32,  
TOWNSHIP 21 SOUTH, RANGE 37 EAST, N.M.P.M.,  
LEA COUNTY, NEW MEXICO.

Survey Date: 1/16/09	Sheet 1 of 1 Sheets
W.O. Number: 09.11.0031	Dr By: LA
Date: 1/24/09	09110031
	Scale: 1"=100'



# VICINITY MAP



SCALE: 1" = 2 MILES

SEC. 32 TWP. 21-S RGE. 37-E

SURVEY N.M.P.M.

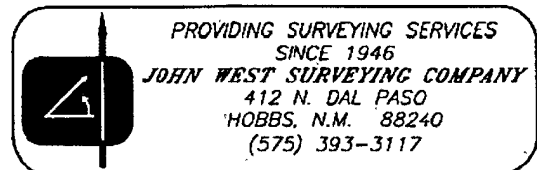
COUNTY LEA STATE NEW MEXICO

DESCRIPTION 1515' FSL & 330' FEL

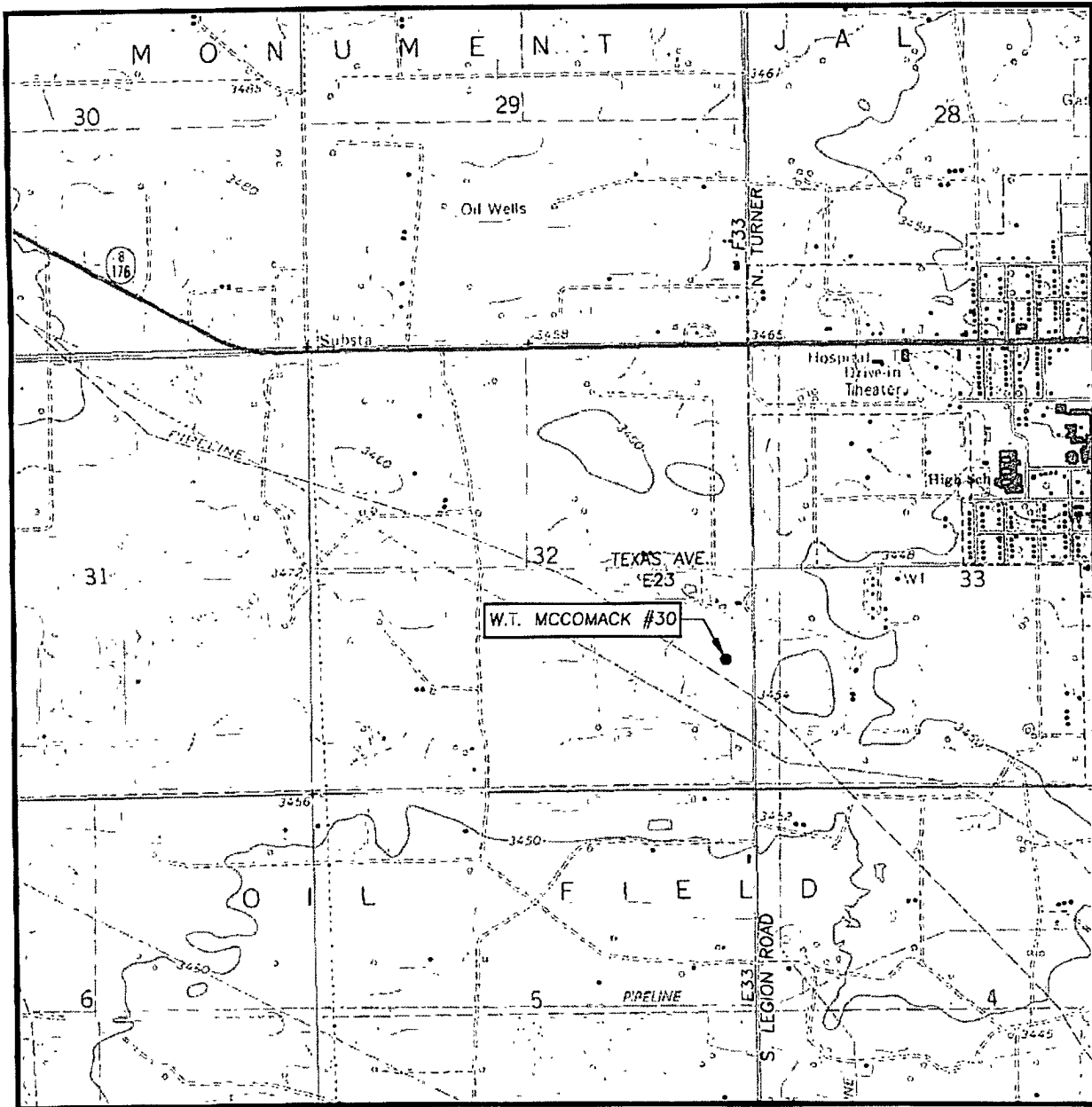
ELEVATION 3454'

OPERATOR CHEVRON USA INC.

LEASE W.T. MCCOMACK



# LOCATION VERIFICATION MAP



SCALE: 1" = 2000'

CONTOUR INTERVAL:  
EUNICE, N.M. - 10'

SEC. 32 TWP. 21-S RGE. 37-E

SURVEY N.M.P.M.

COUNTY LEA STATE NEW MEXICO


DESCRIPTION 1515' FSL & 330' FEL

ELEVATION 3454'

OPERATOR CHEVRON USA INC.

LEASE W.T. MCCOMACK

U.S.G.S. TOPOGRAPHIC MAP  
EUNICE, N.M.



PROVIDING SURVEYING SERVICES  
SINCE 1946

**JOHN WEST SURVEYING COMPANY**

412 N. DAL PASO  
HOBBS, N.M. 88240  
(575) 393-3117