

DISTRICT I
P. O. Box 1980
Hobbs, NM 88241-1980

DISTRICT II
P. O. Drawer DD
Artesia, NM 88211-0719

DISTRICT III
1000 Rio Brazos Rd.
Aztec, NM 87410

DISTRICT IV
P. O. Box 2088
Santa Fe, NM 87507-2088

State of New Mexico
En , Minerals, and Natural Resources I rtment

Form C-102
Revised 02-10-94
Instructions on back

Submit to the Appropriate
District Office
State Lease - 4 copies
Fee Lease - 3 copies

OIL CONSERVATION DIVISION
P. O. Box 2088
Santa Fe, New Mexico 87504-2088

☐ AMENDED REPORT

WELL LOCATION AND ACREAGE DEDICATION PLAT

| | | |
|-------------------------------------|--|--|
| 1 API Number 30-025-35333 | 2 Pool Code 78760 33230 | 3 Pool Name House ; Tubb Blinberry |
| 4 Property Code 27082 | 5 Property Name REDTAG | 6 Well Number 1 |
| 7 OGRID No. 03659 | 8 Operator Name CAPATAZ OPERATING INCORPORATED | 9 Elevation 3566' |

" SURFACE LOCATION

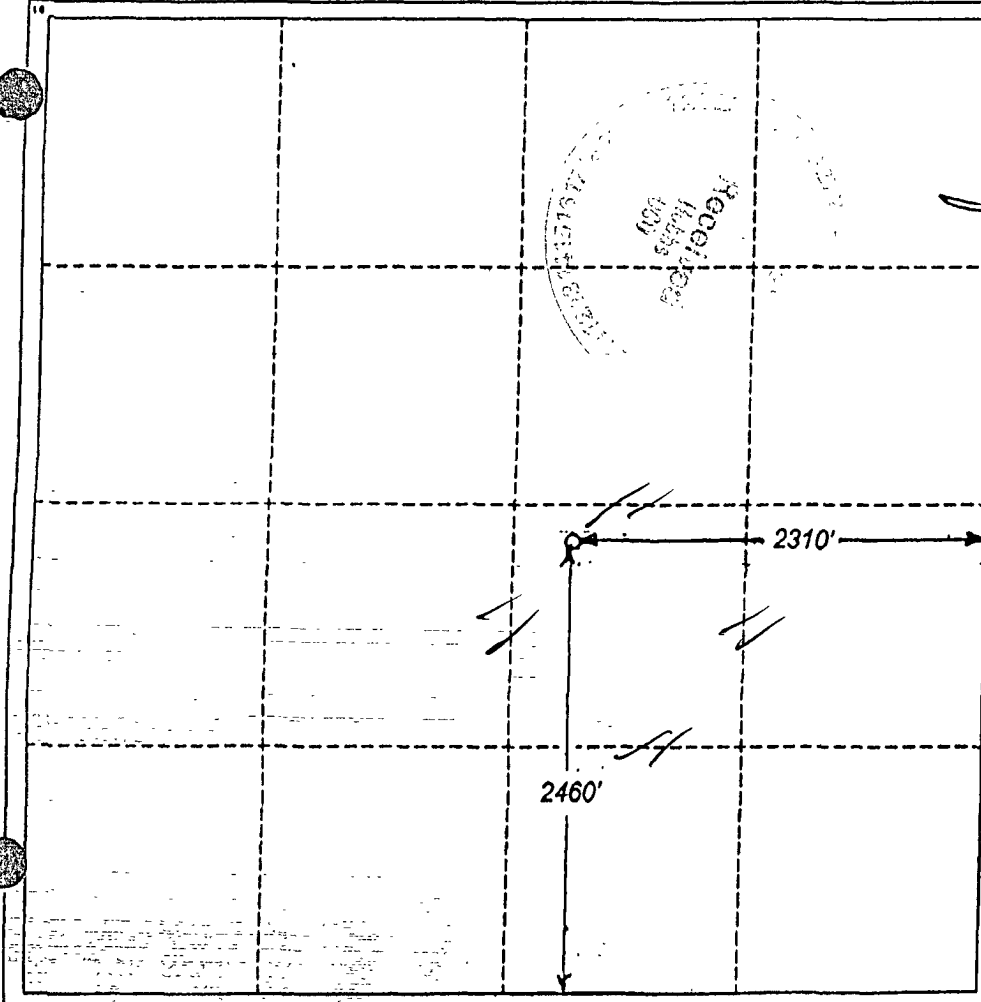
| UL or lot no. | Section | Township | Range | Lot Ida | Feet from the | North/South line | Feet from the | East/West line | County |
|---------------|----------|-----------------|--------------------------|---------|---------------|------------------|---------------|----------------|------------|
| J | 2 | 20 SOUTH | 38 EAST, N.M.P.M. | | 2460' | SOUTH | 2310' | EAST | LEA |

" BOTTOM HOLE LOCATION IF DIFFERENT FROM SURFACE

| UL or lot no. | Section | Township | Range | Lot Ida | Feet from the | North/South line | Feet from the | East/West line | County |
|---------------|---------|----------|-------|---------|---------------|------------------|---------------|----------------|--------|
| | | | | | | | | | |

| | | | |
|---------------------------------|--------------------|-----------------------|--------------|
| 12 Dedicated Acres 40 | 13 Joint or Infill | 14 Consolidation Code | 15 Order No. |
|---------------------------------|--------------------|-----------------------|--------------|

NO ALLOWABLE WELL BE ASSIGNED TO THIS COMPLETION UNTIL ALL INTERESTS HAVE BEEN CONSOLIDATED OR A NON-STANDARD UNIT HAS BEEN APPROVED BY THE DIVISION



OPERATOR CERTIFICATION

I hereby certify that the information contained herein is true and complete to the best of my knowledge and belief.

Signature

Printed Name

H Scott Davis

Title

Agent

Date

12-04-00

SURVEYOR CERTIFICATION

I hereby certify that the well location shown on this plat was plotted from field notes of actual surveys made by me or under my supervision, and that the same is true and correct to the best of my belief.

Date of Survey

OCTOBER 20, 2000

Signature and Seal of
Professional Surveyor

Certification of

V. L. BEAVER

JOB # 7225170 SEP JCP

DISTRICT I
P. O. Box 1980
Hobbs, NM 88241-1980

State of New Mexico
En , Minerals, and Natural Resources I rtment

Form C-102
Revised 02-10-94
Instructions on back

DISTRICT II
P. O. Drawer DD
Artesia, NM 88211-0719

OIL CONSERVATION DIVISION
P. O. Box 2088
Santa Fe, New Mexico 87504-2088

Submit to the Appropriate
District Office
State Lease - 4 copies
Fee Lease - 3 copies

☐ AMENDED REPORT

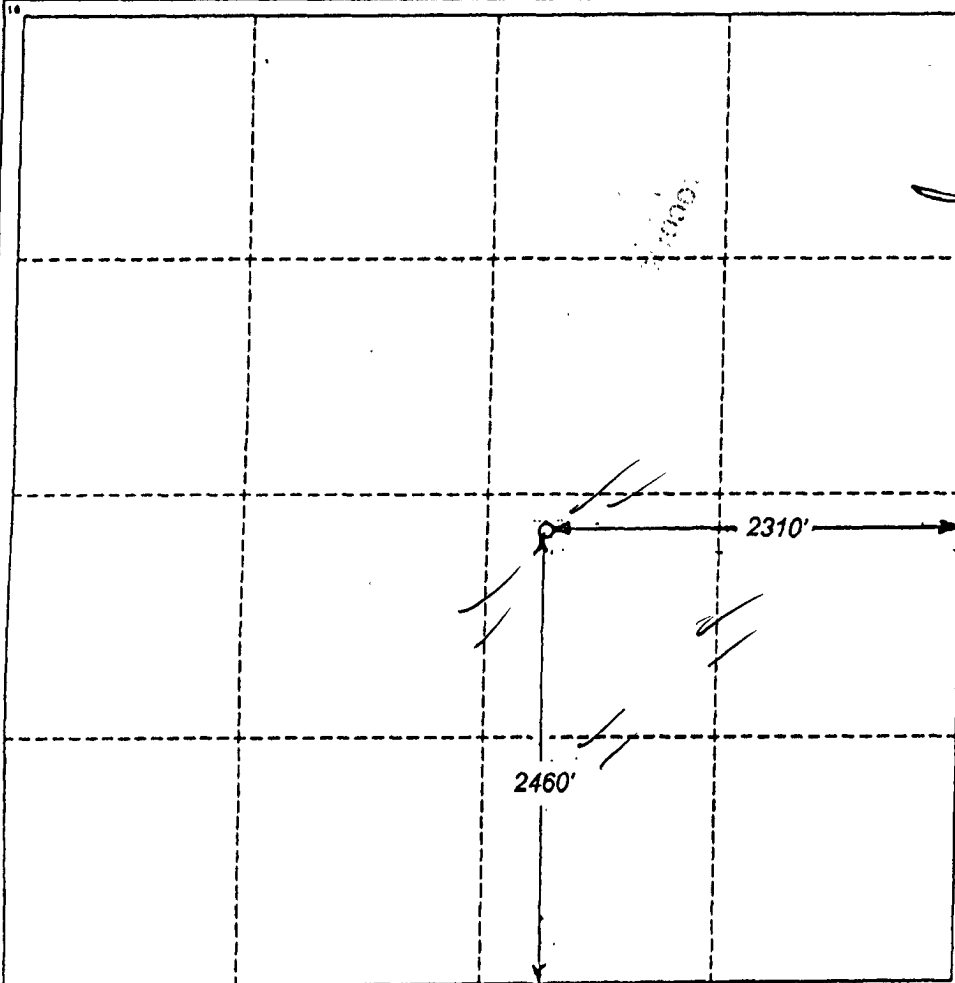
DISTRICT III
1000 Rio Brazos Rd.
Aztec, NM 87410

DISTRICT IV
P. O. Box 2088

Santa Fe, NM 87507-2088 **WELL LOCATION AND ACREAGE DEDICATION PLAT**

| | | | | | | | | | |
|---|---------------------|--|-----------------------------------|------------------------------------|-------------------------------|----------------------------------|------------------------------|------------------------------|--------|
| 1 API Number 30-025-35333 | | 2 Pool Code 78760 | | 3 Pool Name House ; Tubb | | | | | |
| 4 Property Code 27082 | | 5 Property Name REDTAG | | | 6 Well Number 1 | | | | |
| 7 OGRID No. 03659 | | 8 Operator Name CAPATAZ OPERATING INCORPORATED | | | 9 Elevation 3588' | | | | |
| 10 SURFACE LOCATION | | | | | | | | | |
| UL or lot no. J | Section 2 | Township 20 SOUTH | Range 38 EAST, N.M.P.M. | Lot Ida 2460' | Feet from the SOUTH | North/South line 2310' | Feet from the EAST | East/West line LEA | |
| "BOTTOM HOLE LOCATION IF DIFFERENT FROM SURFACE | | | | | | | | | |
| UL or lot no. | Section | Township | Range | Lot Ida | Feet from the | North/South line | Feet from the | East/West line | County |
| 12 Dedicated Acres 40 | | 13 Joint or Infill | | 14 Consolidation Code | | 15 Order No. | | | |

NO ALLOWABLE WELL BE ASSIGNED TO THIS COMPLETION UNTIL ALL INTERESTS HAVE BEEN
CONSOLIDATED OR A NON-STANDARD UNIT HAS BEEN APPROVED BY THE DIVISION



OPERATOR CERTIFICATION

I hereby certify that the information
contained herein is true and complete
to the best of my knowledge and belief.

Signature

Printed Name

H Scott Davis

Title

Agent

Date

12-04-00

SURVEYOR CERTIFICATION

I hereby certify that the well
location shown on this plat was
plotted from field notes of actual
surveys made by me or under
my supervision, and that the
same is true and correct to the
best of my belief.

Date of Survey

OCTOBER 20, 2000

Signature and Seal
Professional Surveyor

Certification
V. L. BEAVER

JOB # 7225

DISTRICT I
P. O. Box 1980
Hobbs, NM 88241-1980

DISTRICT II
P. O. Drawer DD
Artesia, NM 88211-0719

DISTRICT III
1000 Rio Brazos Rd.
Aztec, NM 87410

DISTRICT IV
P. O. Box 2088
Santa Fe, NM 87507-2088

State of New Mexico
En , Minerals, and Natural Resources I rtment

Form C-102
Revised 02-10-94
Instructions on back

Submit to the Appropriate
District Office
State Lease - 4 copies
Fee Lease - 3 copies

OIL CONSERVATION DIVISION
P. O. Box 2088
Santa Fe, New Mexico 87504-2088

☐ AMENDED REPORT

WELL LOCATION AND ACREAGE DEDICATION PLAT

| | | |
|-------------------------------------|--|--------------------------------------|
| 1 API Number 30-025-35333 | 2 Pool Code 33250 | 3 Pool Name House Drinkard |
| 4 Property Code 27082 | 5 Property Name REDTAG | 6 Well Number 1 |
| 7 OGRID No. 03659 | 8 Operator Name CAPATAZ OPERATING INCORPORATED | 9 Elevation 3588' |

" SURFACE LOCATION

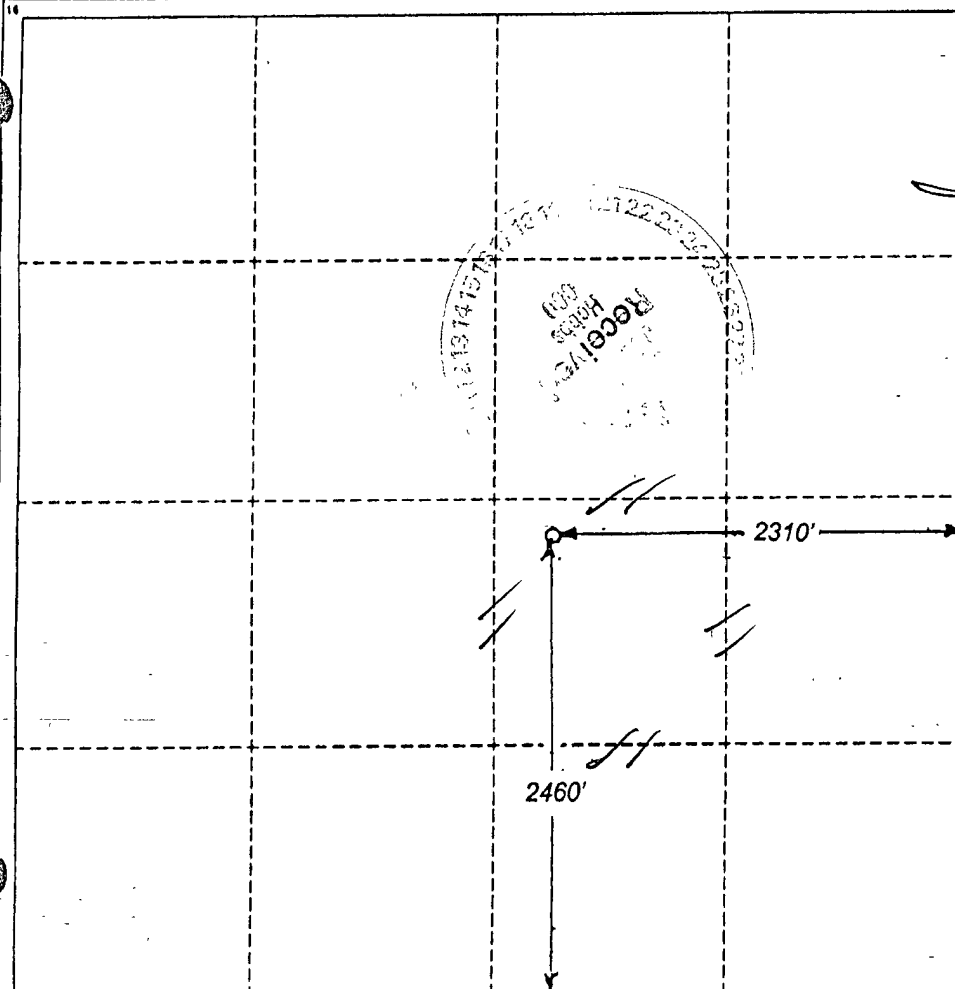
| UL or lot no. | Section | Township | Range | Lot Ida | Feet from the | North/South line | Feet from the | East/West line | County |
|---------------|----------|-----------------|--------------------------|---------|---------------|------------------|---------------|----------------|------------|
| J | 2 | 20 SOUTH | 38 EAST, N.M.P.M. | | 2460' | SOUTH | 2310' | EAST | LEA |

" BOTTOM HOLE LOCATION IF DIFFERENT FROM SURFACE

| UL or lot no. | Section | Township | Range | Lot Ida | Feet from the | North/South line | Feet from the | East/West line | County |
|---------------|---------|----------|-------|---------|---------------|------------------|---------------|----------------|--------|
| | | | | | | | | | |

| | | | |
|---------------------------------|--------------------|-----------------------|--------------|
| 12 Dedicated Acres 40 | 13 Joint or Infill | 14 Consolidation Code | 15 Order No. |
|---------------------------------|--------------------|-----------------------|--------------|

NO ALLOWABLE WELL BE ASSIGNED TO THIS COMPLETION UNTIL ALL INTERESTS HAVE BEEN
CONSOLIDATED OR A NON-STANDARD UNIT HAS BEEN APPROVED BY THE DIVISION



OPERATOR CERTIFICATION

I hereby certify that the information
contained herein is true and complete
to the best of my knowledge and belief.

Signature

Printed Name

H Scott Davis

Title

Agent

Date

12-04-00

SURVEYOR CERTIFICATION

I hereby certify that the well
location shown on this plat was
plotted from field notes of actual
surveys made by me or under
my supervision, and that the
same is true and correct to the
best of my belief.

Date of Survey

OCTOBER 20, 2000

Signature and Seal of

Professional Surveyor

STATE OF NEW MEXICO

PLATE NO. 7920

EXPIRATION DATE 12-31-2001

BY V. L. BEAZER

NO. 7920

EXPIRATION DATE 12-31-2001

JOE # 7225

JOE # 7225

JOE # 7225