

DISTRICT I
1025 N. French Dr., Hobbs, NM 88240

DISTRICT II
1301 W. Grand Avenue, Artesia, NM 88210

DISTRICT III
1000 Rio Brazos Rd., Aztec, NM 87410

DISTRICT IV
1220 S. St. Francis Dr., Santa Fe, NM 87505

State of New Mexico
Energy, Minerals and Natural Resources Department

Form C-102
Revised July 16, 2010

Submit one copy to appropriate
District Office

OIL CONSERVATION DIVISION
1220 South St. Francis Dr.
Santa Fe, New Mexico 87505

WELL LOCATION AND ACREAGE DEDICATION PLAT

☐ AMENDED REPORT

API Number 30-025-40018	Pool Code 33230	Pool Name House; Blinebry
Property Code 303229	Property Name ROITAN	Well Number 3
OGRID No. 873	Operator Name APACHE CORPORATION	Elevation 3565'

Surface Location

UL or lot No.	Section	Township	Range	Lot Idn	Feet from the	North/South line	Feet from the	East/West line	County
G	14	20 S	38 E		2310	NORTH	2310	EAST	LEA

Bottom Hole Location If Different From Surface

UL or lot No.	Section	Township	Range	Lot Idn	Feet from the	North/South line	Feet from the	East/West line	County

Dedicated Acres 40	Joint or Infill	Consolidation Code	Order No.
------------------------------	-----------------	--------------------	-----------

NO ALLOWABLE WILL BE ASSIGNED TO THIS COMPLETION UNTIL ALL INTERESTS HAVE BEEN CONSOLIDATED
OR A NON-STANDARD UNIT HAS BEEN APPROVED BY THE DIVISION

<p>SURFACE LOCATION Lat - N 32°34'26.595" Long - W 103°07'05.573" NMSPCE- N 574708.820 E 915655.973 (NAD-83)</p> <p>SURFACE LOCATION Lat - N 32°34'26.18" Long - W 103°07'03.86" NMSPCE- N 574649.738 E 874473.553 (NAD-27)</p>		<p>OPERATOR CERTIFICATION</p> <p>I hereby certify that the information contained herein is true and complete to the best of my knowledge and belief, and that this organization either owns a working interest or unleased mineral interest in the land including the proposed bottom hole location or has a right to drill this well at this location pursuant to a contract with an owner of such a mineral or working interest, or to a voluntary pooling agreement or a compulsory pooling order heretofore entered by the division.</p> <p><i>Sorina L. Flores</i> 1/19/11 Signature Date</p> <p><i>Sorina L. Flores</i> Printed Name</p> <p><i>Sorina.Flores@apache corp.com</i> Email Address</p>
	<p>SURVEYOR CERTIFICATION</p> <p>I hereby certify that the well location shown on this plat was plotted from field notes of actual surveys made by me or under my supervision and that the same is true and correct to the best of my belief.</p> <p>JAN 14 2011 Date Surveyed</p> <p><i>GARY L. JONES</i> Signature & Seal of Professional Surveyor 7977</p> <p>W.O. 1/19/11</p> <p>Certificate No. Gary L. Jones 7977</p> <p>BASIN SURVEYS 24033</p>	

DISTRICT I
1625 N. French Dr., Hobbs, NM 88240

DISTRICT II
1301 W. Grand Avenue, Artesia, NM 88210

DISTRICT III
1000 Rio Brazos Rd., Aztec, NM 87410

DISTRICT IV
1220 S. St. Francis Dr., Santa Fe, NM 87505

State of New Mexico
Energy, Minerals and Natural Resources Department

OIL CONSERVATION DIVISION
1220 South St. Francis Dr.
Santa Fe, New Mexico 87505

Form C-102
Revised July 16, 2010
Submit one copy to appropriate
District Office

WELL LOCATION AND ACREAGE DEDICATION PLAT

☐ AMENDED REPORT

API Number 30-025-40018		Pool Code 78760	Pool Name House; Tubb
Property Code 303229	Property Name ROITAN		Well Number 3
OGRID No. 873	Operator Name APACHE CORPORATION		Elevation 3565'

Surface Location

UL or lot No. G	Section 14	Township 20 S	Range 38 E	Lot Idn	Feet from the 2310	North/South line NORTH	Feet from the 2310	East/West line EAST	County LEA
---------------------------	----------------------	-------------------------	----------------------	---------	------------------------------	----------------------------------	------------------------------	-------------------------------	----------------------

Bottom Hole Location If Different From Surface

UL or lot No.	Section	Township	Range	Lot Idn	Feet from the	North/South line	Feet from the	East/West line	County
Dedicated Acres 40	Joint or Infill	Consolidation Code	Order No.						

NO ALLOWABLE WILL BE ASSIGNED TO THIS COMPLETION UNTIL ALL INTERESTS HAVE BEEN CONSOLIDATED
OR A NON-STANDARD UNIT HAS BEEN APPROVED BY THE DIVISION

	OPERATOR CERTIFICATION I hereby certify that the information contained herein is true and complete to the best of my knowledge and belief, and that this organization either owns a working interest or unleased mineral interest in the land including the proposed bottom hole location or has a right to drill this well at this location pursuant to a contract with an owner of such a mineral or working interest, or to a voluntary pooling agreement or a compulsory pooling order heretofore entered by the division. Sorina L. Flores 1/19/11 Signature Date Sorina L. Flores Printed Name Sorina.Flores@apachecorp.com Email Address
	SURVEYOR CERTIFICATION I hereby certify that the well location shown on this plat was plotted from field notes of actual surveys made by me or under my supervision and that the same is true and correct to the best of my belief. JAN 14 2011 Date Surveyed Signature & Seal of Professional Surveyor W.O. [Signature] Certificate No. Gary L. Jones 7977 BASIN SURVEYS 24033

DISTRICT I
1625 N. French Dr., Hobbs, NM 88240

DISTRICT II
1301 W. Grand Avenue, Artesia, NM 88210

DISTRICT III
1000 Rio Brazos Rd., Aztec, NM 87410

DISTRICT IV
1220 S. St. Francis Dr., Santa Fe, NM 87505

State of New Mexico
Energy, Minerals and Natural Resources Department

Form C-102
Revised July 18, 2010

Submit one copy to appropriate
District Office

OIL CONSERVATION DIVISION
1220 South St. Francis Dr.
Santa Fe, New Mexico 87505

WELL LOCATION AND ACREAGE DEDICATION PLAT

☐ AMENDED REPORT

API Number 30-025-40018	Pool Code 33250	Pool Name House; Drinkard
Property Code 303229	Property Name ROITAN	Well Number 3
OGRID No. 873	Operator Name APACHE CORPORATION	Elevation 3565'

Surface Location

UL or lot No.	Section	Township	Range	Lot Idn	Feet from the	North/South line	Feet from the	East/West line	County
G	14	20 S	30 E		2310	NORTH	2310	EAST	LEA

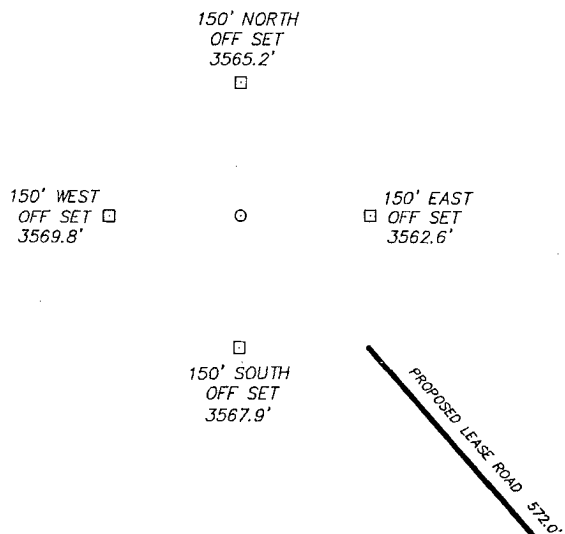
Bottom Hole Location If Different From Surface

UL or lot No.	Section	Township	Range	Lot Idn	Feet from the	North/South line	Feet from the	East/West line	County
Dedicated Acres 40	Joint or Infill	Consolidation Code	Order No.						

NO ALLOWABLE WILL BE ASSIGNED TO THIS COMPLETION UNTIL ALL INTERESTS HAVE BEEN CONSOLIDATED
OR A NON-STANDARD UNIT HAS BEEN APPROVED BY THE DIVISION

<p>SURFACE LOCATION Lat - N 32°34'26.595" Long - W 103°07'05.573" NMSPCE- N 574708.820 E 915655.973 (NAD-83)</p> <p>SURFACE LOCATION Lat - N 32°34'26.18" Long - W 103°07'03.86" NMSPCE- N 574649.738 E 874473.553 (NAD-27)</p>		<p>OPERATOR CERTIFICATION I hereby certify that the information contained herein is true and complete to the best of my knowledge and belief, and that this organization either owns a working interest or unleased mineral interest in the land including the proposed bottom hole location or has a right to drill this well at this location pursuant to a contract with an owner of such a mineral or working interest, or to a voluntary pooling agreement or a compulsory pooling order heretofore entered by the division.</p> <p>Sorina L. Flores 1/19/11 Signature Date</p> <p>Sorina L. Flores Printed Name</p> <p>Sorina.Flores@apache.corp.com Email Address</p>
	<p>SURVEYOR CERTIFICATION I hereby certify that the well location shown on this plat was plotted from field notes of actual surveys made by me or under my supervision, and that the same is true and correct to the best of my belief.</p> <p>JANUARY 14 2011 Date Surveyed</p> <p>GARY L. JONES Signature & Seal of Professional Surveyor 9777</p> <p>W.O. JONES Certificate No. Gary L. Jones 7977</p> <p>BASIN SURVEYS 24033</p>	

SECTION 14, TOWNSHIP 20 SOUTH, RANGE 38 EAST, N.M.P.M.,
LEA COUNTY, NEW MEXICO.

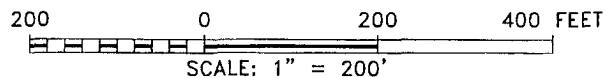


DIAMONDBACK 002

APACHE CORPORATION
ROITAN #3
ELEV. - 3565'

Lat - N 32°34'26.595"
Long - W 103°07'05.573"
NMSPCE- N 574708.820
E 915655.973
(NAD-83)

Lat - N 32°34'26.18"
Long - W 103°07'03.86"
NMSPCE- N 574649.738
E 874473.553
(NAD-27)



Directions to Location:

FROM THE JUNCTION OF THE EUNICE HWY AND McCASLAND, GO EAST ON McCASLAND FOR 0.9 MILES TO LEASE ROAD, ON LEASE ROAD GO NORTH 0.2 MILES THENCE WEST 0.1 MILES TO LEASE ROAD, ON LEASE ROAD GO NORTH 0.1 MILE TO WELL PAD AND PROPOSED LEASE ROAD.

APACHE CORPORATION

REF: ROITAN #3 / WELL PAD TOPO

THE ROITAN #3 LOCATED 2310'

FROM THE NORTH LINE AND 2310' FROM THE EAST LINE OF
SECTION 14, TOWNSHIP 20 SOUTH, RANGE 38 EAST,
N.M.P.M., LEA COUNTY, NEW MEXICO.

BASIN SURVEYS P.O. BOX 1786-HOBBS, NEW MEXICO

W.O. Number: 24033

Drawn By: J. SMALL

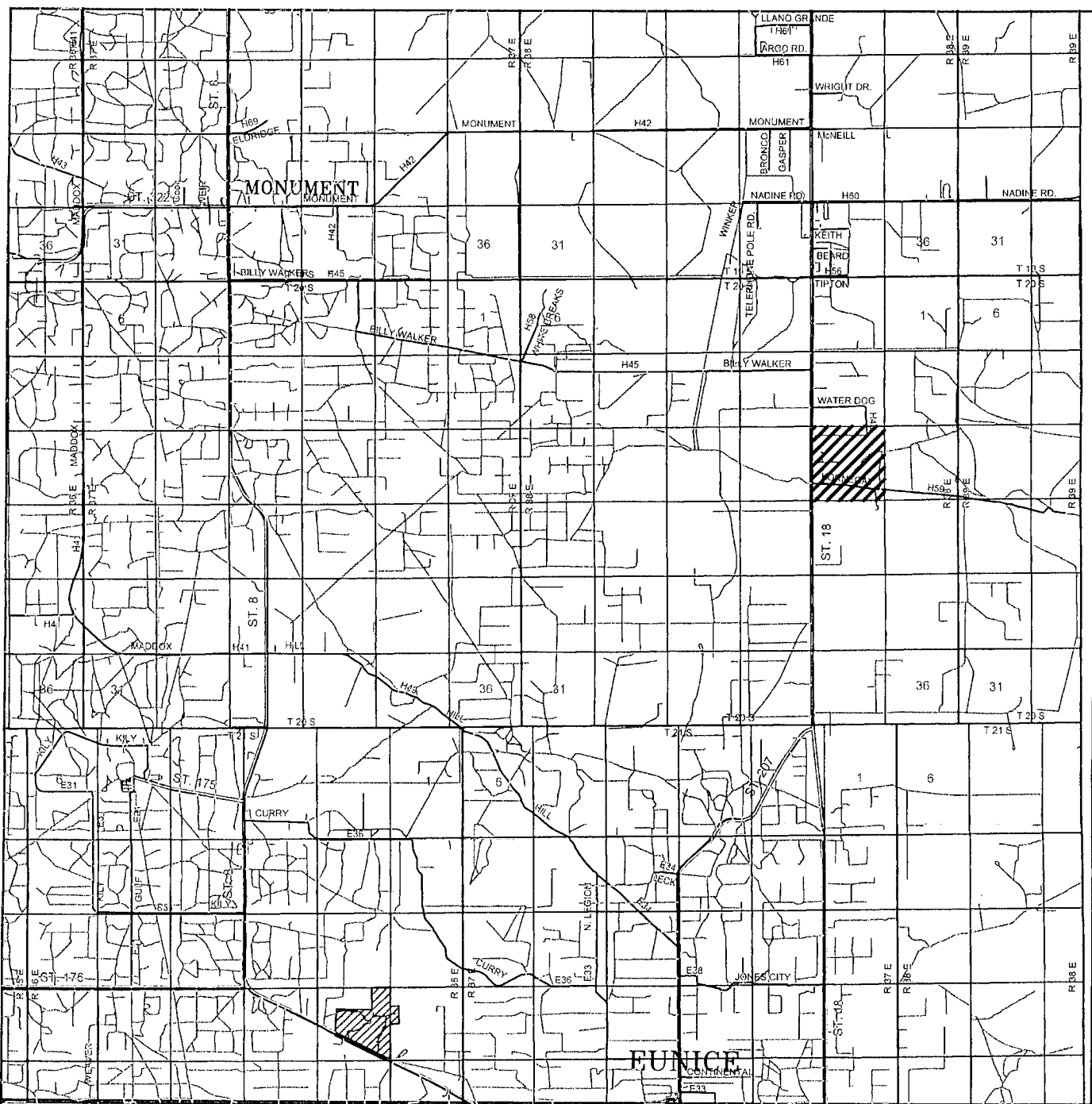
Date: 01-18-2011

Disk: JMS 24033

Survey Date: 01-14-2011

Sheet 1 of 1 Sheets

APACHE
CORPORATION



ROITAN #3

Located 2310' FNL and 2310' FEL
Section 14, Township 20 South, Range 38 East,
N.M.P.M., Lea County, New Mexico.

basin
surveys
focused on excellence
in the oilfield

P.O. Box 1786
1120 N. West County Rd.
Hobbs, New Mexico 88241
(575) 393-7316 - Office
(575) 392-2206 - Fax
basinsurveys.com

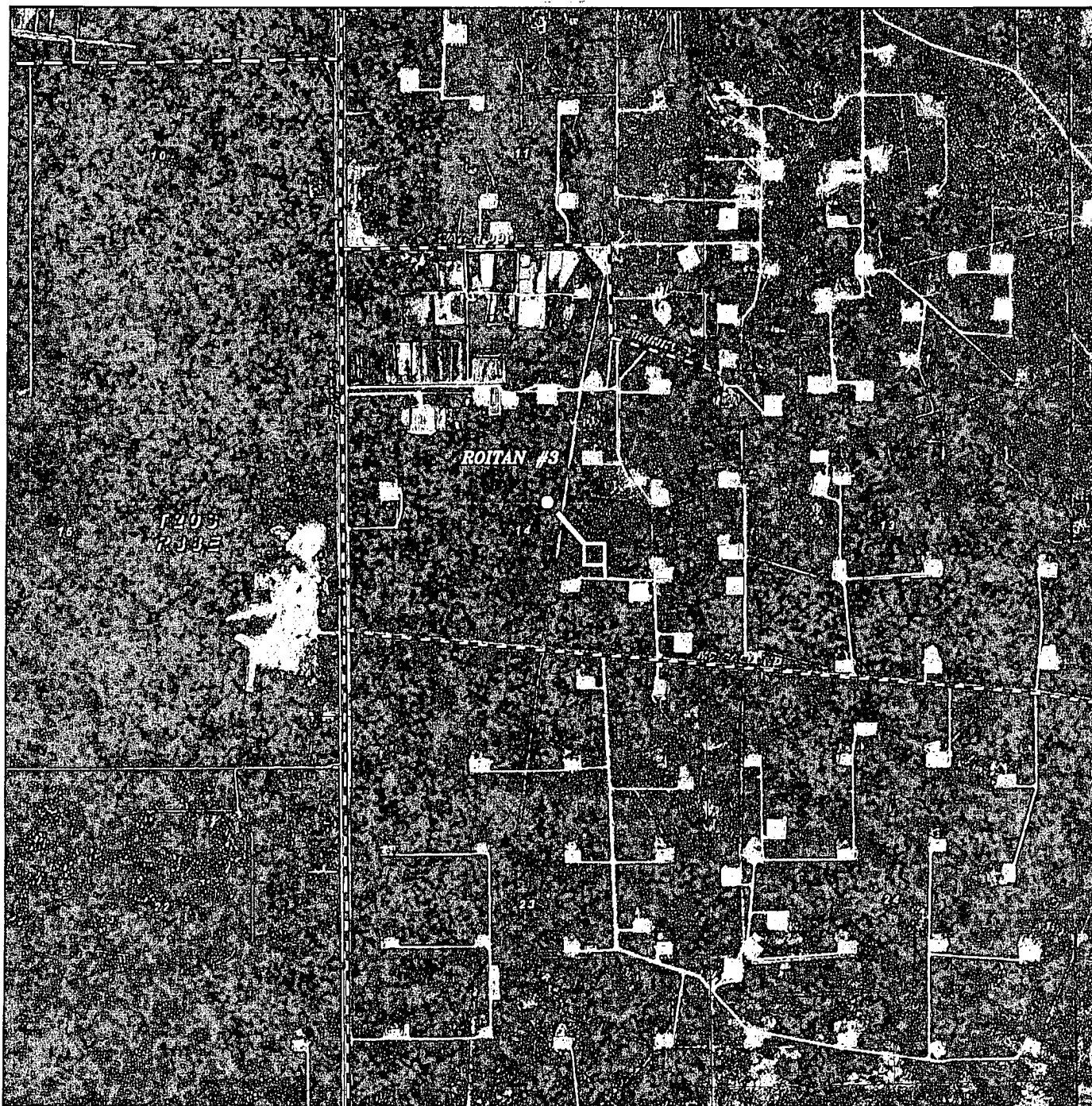
W.O. Number: JMS 24033

Survey Date: 01-14-2011

Scale: 1" = 2 Miles

Date: 01-18-2011

APACHE
CORPORATION



ROITAN #3

Located 2310' FNL and 2310' FEL
 Section 14, Township 20 South, Range 38 East,
 N.M.P.M., Lea County, New Mexico.

basin
surveys

focused on excellence
 in the oilfield

P.O. Box 1786
 1120 N. West County Rd.
 Hobbs, New Mexico 88241
 (575) 393-7316 - Office
 (575) 392-2206 - Fax
basinsurveys.com

W.O. Number: JMS 24033

Scale: 1" = 2000'

YELLOW TINT - USA LAND
 BLUE TINT - STATE LAND
 NATURAL COLOR - FEE LAND

APACHE
 CORPORATION