

*SW*

DISTRICT I  
1625 N. FRENCH DR., HOBBS, NM 88240

State of New Mexico  
Energy, Minerals and Natural Resources Department

Form C-102

Revised October 12, 2005

Submit to Appropriate District Office

State Lease - 4 Copies

Fee Lease - 3 Copies

DISTRICT II  
1301 W. GRAND AVENUE, ARTESIA, NM 88210

OIL CONSERVATION DIVISION

11885 SOUTH ST. FRANCIS DR.

Santa Fe, New Mexico 87505

DISTRICT III  
1000 RIO BRAZOS RD., AZTEC, NM 87410

DISTRICT IV  
11885 S. ST. FRANCIS DR., SANTA FE, NM 87505

WELL LOCATION AND ACREAGE DEDICATION PLAT

☐ AMENDED REPORT

API Number <b>30-025-4007A</b>	Pool Code <b>72480</b>	Pool Name <b>Blinbry Oil and Gas (Pro Gas)</b>
Property Code <b>306625</b>	Property Name <b>WALTER LYNCH</b>	Well Number <b>13</b>
GORID No. <b>873</b>	Operator Name <b>APACHE CORPORATION</b>	Elevation <b>3357'</b>

Surface Location

UL or lot No. <b>E</b>	Section <b>1</b>	Township <b>22-S</b>	Range <b>37-E</b>	Lot Idn	Feet from the <b>1650</b>	North/South line <b>NORTH</b>	Feet from the <b>330</b>	East/West line <b>WEST</b>	County <b>LEA</b>
---------------------------	---------------------	-------------------------	----------------------	---------	------------------------------	----------------------------------	-----------------------------	-------------------------------	----------------------

Bottom Hole Location If Different From Surface

UL or lot No.	Section	Township	Range	Lot Idn	Feet from the	North/South line	Feet from the	East/West line	County
Dedicated Acres <b>40</b>	Joint or Infill	Consolidation Code	Order No. <b>SD-2011-02</b>						

NO ALLOWABLE WILL BE ASSIGNED TO THIS COMPLETION UNTIL ALL INTERESTS HAVE BEEN CONSOLIDATED  
OR A NON-STANDARD UNIT HAS BEEN APPROVED BY THE DIVISION

LOT 4	LOT 3	LOT 2	LOT 1
39.77 AC.	39.84 AC.	39.90 AC.	39.87 AC.
<p>1650'</p> <p>330'</p> <p>GEODEIC COORDINATES NAD 27 NME SURFACE LOCATION  Y=519891.0 N X=873263.3 E  LAT.=32.423485° N LONG.=103.123683° W  LAT.=32°25'25" N LONG.=103°07'25" W</p>			

**OPERATOR CERTIFICATION**

I hereby certify that the information herein is true and complete to the best of my knowledge and belief, and that this organization either owns a working interest or unleased mineral interest in the land including the proposed bottom hole location or has a right to drill this well at this location pursuant to a contract with an owner of such mineral or working interest, or to a voluntary pooling agreement or a compulsory pooling order heretofore entered by the division.

*Sorina L. Flores* 3/1/11  
Signature Date  
**Sorina L. Flores**  
Printed Name

**SURVEYOR CERTIFICATION**

I hereby certify that the well location shown on this plat was plotted from field notes of actual surveys made by me or under my supervision, and that the same is true and correct to the best of my belief.

DECEMBER 17, 2010

Date Surveyed DSS  
Signature & Seal of Professional Surveyor  
*Ronald E. Eidson* 01/07/2011  
10.11.1845  
Certificate No. GARY C. EIDSON 12841  
RONALD E. EIDSON 3239

DISTRICT I  
1625 N. FRENCH DR., HOBBS, NM 88240

DISTRICT II  
1301 W. GRAND AVENUE, ARTESIA, NM 88210

DISTRICT III  
1000 RIO BRAZOS RD., AZTEC, NM 87410

DISTRICT IV  
11885 S. ST. FRANCIS DR., SANTA FE, NM 87505

State of New Mexico  
Energy, Minerals and Natural Resources Department

OIL CONSERVATION DIVISION  
11885 SOUTH ST. FRANCIS DR.  
Santa Fe, New Mexico 87505

Form C-102  
Revised October 12, 2005  
Submit to Appropriate District Office  
State Lease - 4 Copies  
Fee Lease - 3 Copies

WELL LOCATION AND ACREAGE DEDICATION PLAT

☐ AMENDED REPORT

API Number <b>30-02540079</b>	Pool Code <b>60240</b>	Pool Name <b>Tubb Oil and Gas (oil)</b>
Property Code <b>306625</b>	Property Name <b>WALTER LYNCH</b>	Well Number <b>13</b>
OGRID No. <b>873</b>	Operator Name <b>APACHE CORPORATION</b>	Elevation <b>3357'</b>

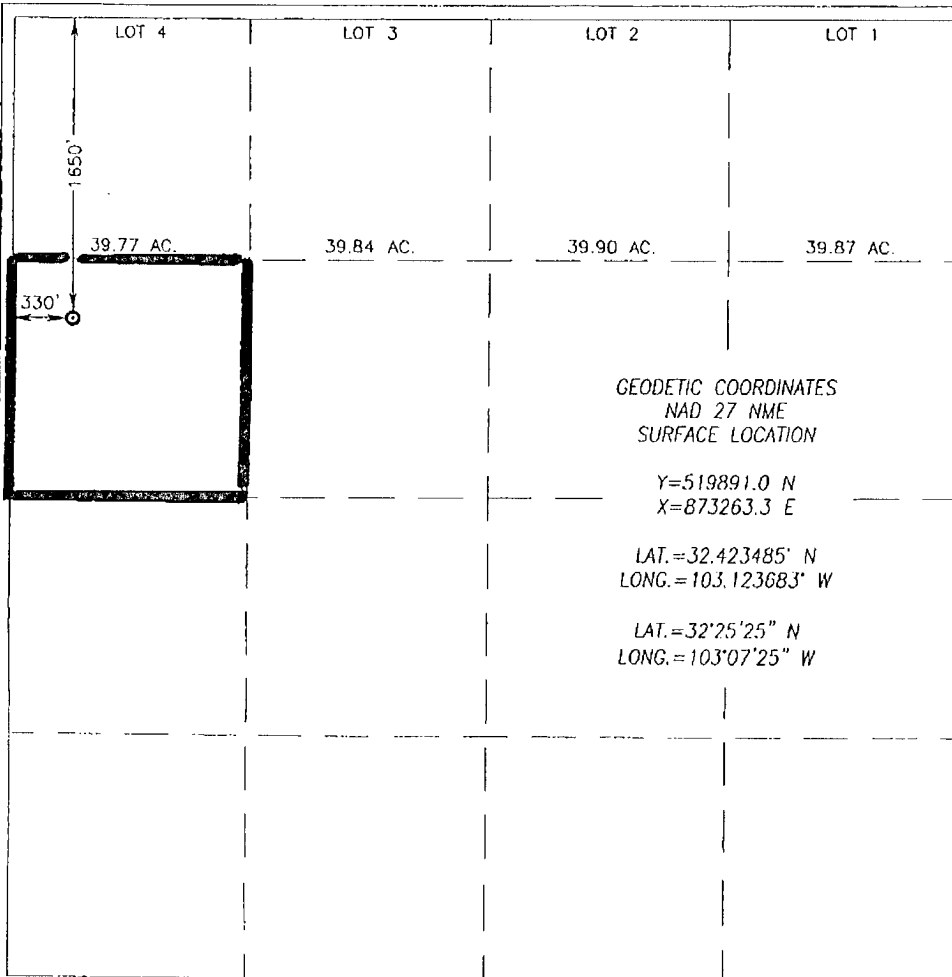
Surface Location

UL or lot No.	Section	Township	Range	Lot Idn	Feet from the	North/South line	Feet from the	East/West line	County
<b>E</b>	<b>1</b>	<b>22-S</b>	<b>37-E</b>		<b>1650</b>	<b>NORTH</b>	<b>330</b>	<b>WEST</b>	<b>LEA</b>

Bottom Hole Location If Different From Surface

UL or lot No.	Section	Township	Range	Lot Idn	Feet from the	North/South line	Feet from the	East/West line	County
Dedicated Acres <b>40</b>	Joint or Infill	Consolidation Code	Order No. <b>SD-2011-02</b>						

NO ALLOWABLE WILL BE ASSIGNED TO THIS COMPLETION UNTIL ALL INTERESTS HAVE BEEN CONSOLIDATED  
OR A NON-STANDARD UNIT HAS BEEN APPROVED BY THE DIVISION



OPERATOR CERTIFICATION

I hereby certify that the information herein is true and complete to the best of my knowledge and belief, and that this organization either owns a working interest or unleased mineral interest in the land including the proposed bottom hole location or has a right to drill this well at this location pursuant to a contract with an owner of such mineral or working interest, or to a voluntary pooling agreement or a compulsory pooling order heretofore entered by the division.

*Sorina L. Flores* 3/1/11  
Signature Date  
**Sorina L. Flores**  
Printed Name

SURVEYOR CERTIFICATION

I hereby certify that the well location shown on this plat was plotted from field notes of actual surveys made by me or under my supervision, and that the same is true and correct to the best of my belief.

DECEMBER 17, 2010

Date Surveyed	DSS
Signature & Seal of Professional Surveyor	
<i>Ronald J. Eidson</i> 01/07/2011 10.1.1845	
Certificate No. GARY C. EIDSON 12641 RONALD J. EIDSON 3239	

DISTRICT I  
1625 N. FRPNCH DR., HOBBS, NM 88240

DISTRICT II  
1301 W. GRAND AVENUE, ARTESIA, NM 88210

DISTRICT III  
1000 RIO BRAZOS RD., AZTEC, NM 87410

DISTRICT IV  
11885 S. ST. FRANCIS DR., SANTA FE, NM 87505

State of New Mexico  
Energy, Minerals and Natural Resources Department

OIL CONSERVATION DIVISION

11885 SOUTH ST. FRANCIS DR.  
Santa Fe, New Mexico 87505

Form C-102

Revised October 12, 2005  
Submit to Appropriate District Office  
State Lease - 4 Copies  
Fee Lease - 3 Copies

WELL LOCATION AND ACREAGE DEDICATION PLAT

☐ AMENDED REPORT

API Number <b>30-025-4001</b>	Pool Code <b>7900</b>	Pool Name <b>Brunson; Drinkard-ABO, South</b>
Property Code <b>306625</b>	Property Name <b>WALTER LYNCH</b>	Well Number <b>13</b>
OGRID No. <b>873</b>	Operator Name <b>APACHE CORPORATION</b>	Elevation <b>3357'</b>

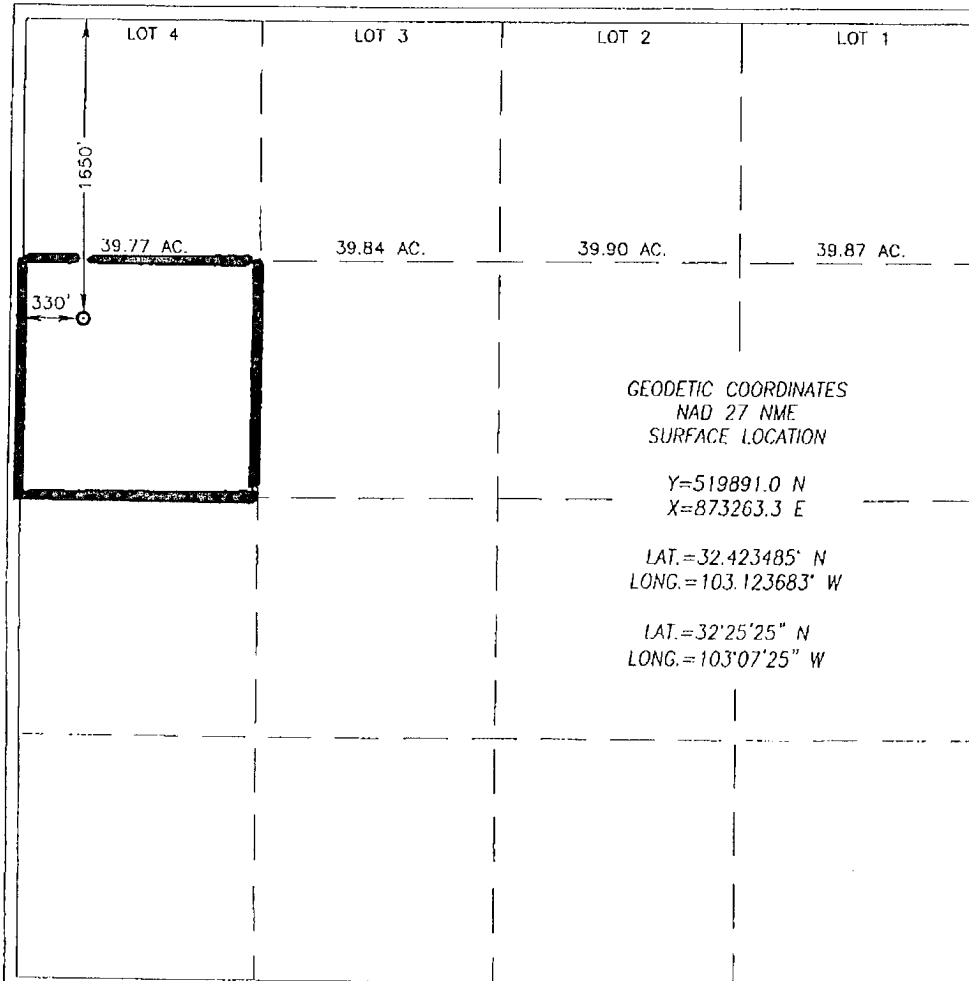
Surface Location

UL or lot No. <b>E</b>	Section <b>1</b>	Township <b>22-S</b>	Range <b>37-E</b>	Lot Idn	Feet from the <b>1650</b>	North/South line <b>NORTH</b>	Feet from the <b>330</b>	East/West line <b>WEST</b>	County <b>LEA</b>
---------------------------	---------------------	-------------------------	----------------------	---------	------------------------------	----------------------------------	-----------------------------	-------------------------------	----------------------

Bottom Hole Location If Different From Surface

UL or lot No.	Section	Township	Range	Lot Idn	Feet from the	North/South line	Feet from the	East/West line	County
Dedicated Acres <b>40</b>	Joint or Infill	Consolidation Code	Order No. <b>50-2011-02</b>						

NO ALLOWABLE WILL BE ASSIGNED TO THIS COMPLETION UNTIL ALL INTERESTS HAVE BEEN CONSOLIDATED  
OR A NON-STANDARD UNIT HAS BEEN APPROVED BY THE DIVISION



OPERATOR CERTIFICATION

I hereby certify that the information herein is true and complete to the best of my knowledge and belief, and that this organization either owns a working interest or unleased mineral interest in the land including the proposed bottom hole location or has a right to drill this well at this location pursuant to a contract with an owner of such mineral or working interest, or to a voluntary pooling agreement or a compulsory pooling order heretofore entered by the division.

*Sorina L. Flores* 3/1/11  
Signature Date  
Sorina L. Flores  
Printed Name

SURVEYOR CERTIFICATION

I hereby certify that the well location shown on this plat was plotted from field notes of actual surveys made by me or under my supervision, and that the same is true and correct to the best of my belief.

DECEMBER 17, 2010

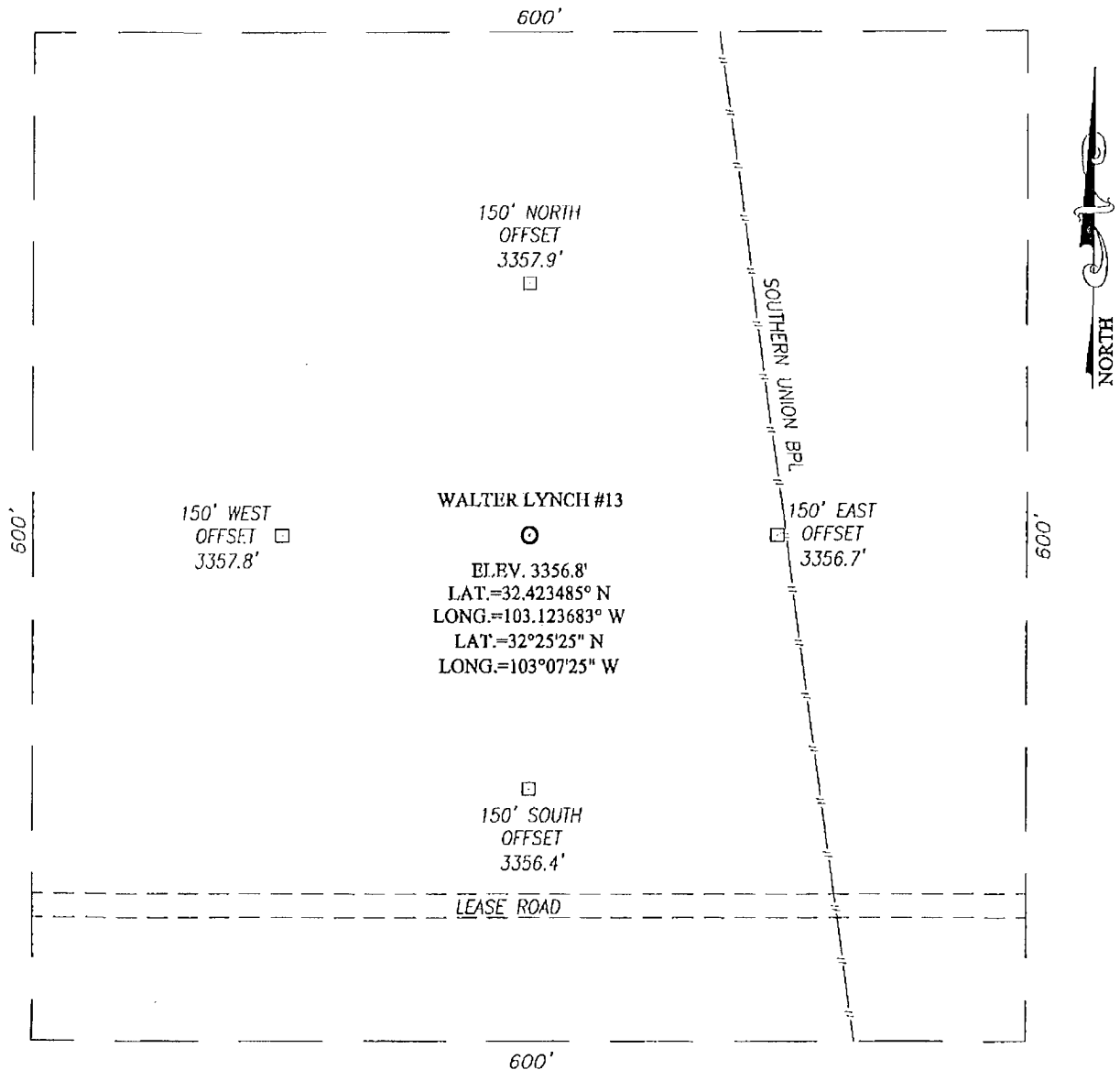
Date Surveyed OSS

Signature & Seal of Professional Surveyor

*Ronald J. Eidson* 01/07/2011  
10.11.1845

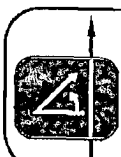
Certificate No. GARY C. EIDSON 12641  
RONALD J. EIDSON 3239

SECTION 1, TOWNSHIP 22 SOUTH, RANGE 37 EAST, N.M.P.M.,  
LEA COUNTY NEW MEXICO

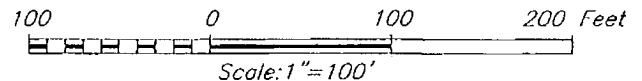


DIRECTIONS TO LOCATION

FROM THE INTERSECTION ST. HWY. #18 AND CO.  
RD. #E17 (DRINKARD RD.), GO SOUTH ON CO.  
RD. #E17 APPROX. 0.3 MILES. TURN LEFT AND  
GO EAST ON EXISTING LEASE ROAD APPROX. 350  
FEET. THIS LOCATION STAKE IS APPROX. 220 FEET  
NORTH OF LEASE ROAD.



PROVIDING SURVEYING SERVICES  
SINCE 1946  
**JOHN WEST SURVEYING COMPANY**  
412 N. DAL PASO  
HOBBS, N.M. 88240  
(575) 393-3117

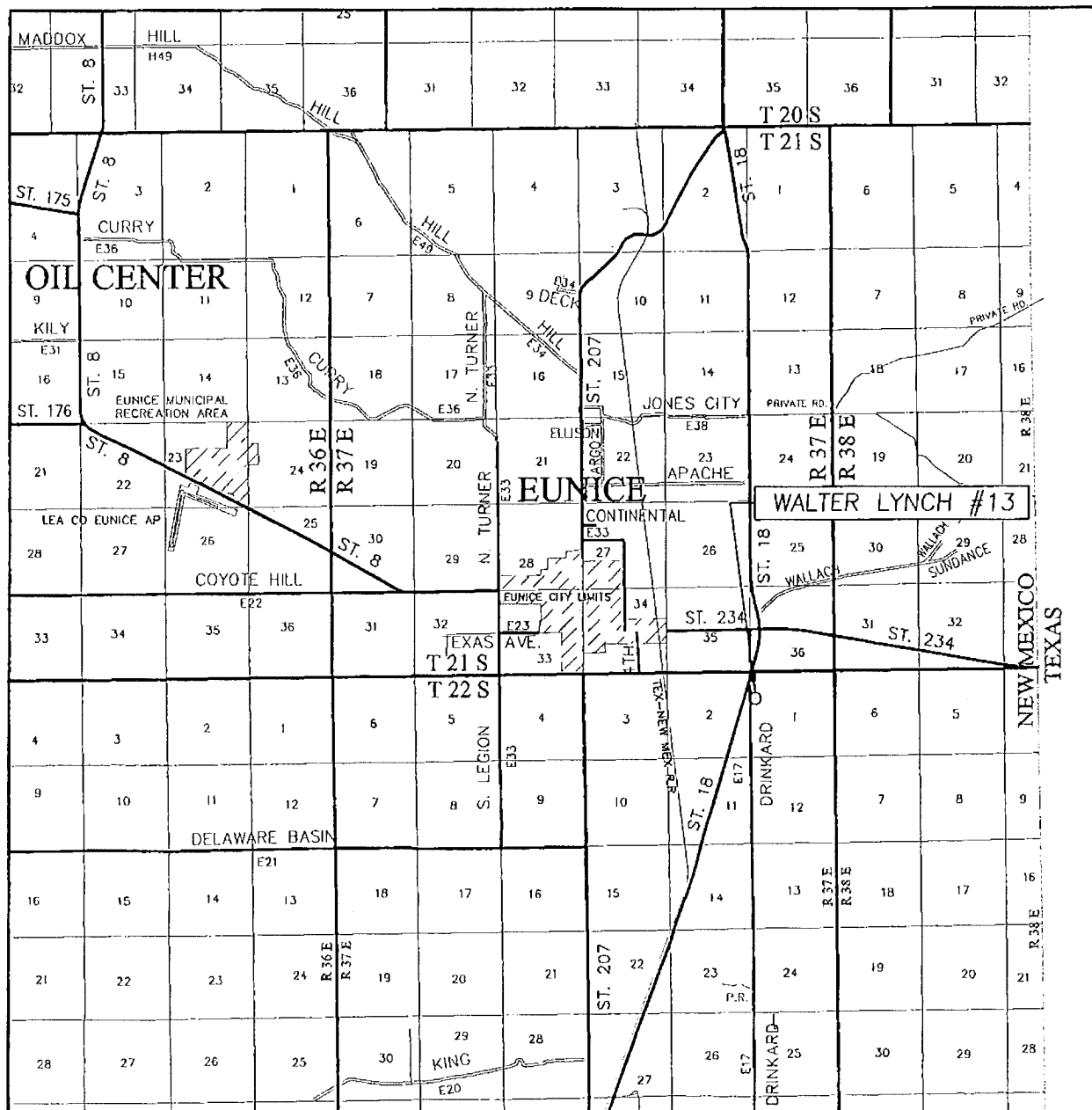


**APACHE CORPORATION**

WALTER LYNCH #13 WELL  
LOCATED 1650 FEET FROM THE NORTH LINE  
AND 330 FEET FROM THE WEST LINE OF SECTION 1,  
TOWNSHIP 22 SOUTH, RANGE 37 EAST, N.M.P.M.,  
LEA COUNTY, NEW MEXICO.

Survey Date: 12/17/10	Sheet 1 of 1 Sheets
W.O. Number: 10.11.1845	Dr By: DSS
Date: 1/3/11	10111845
	Scale: 1"=100'

# VICINITY MAP



SCALE: 1" = 2 MILES

SEC. 1 TWP. 22--S. RGE. 37--E

SURVEY N.M.P.M.


COUNTY LEA STATE NEW MEXICO

DESCRIPTION 1650' FNL & 330' FWL

ELEVATION 3357'

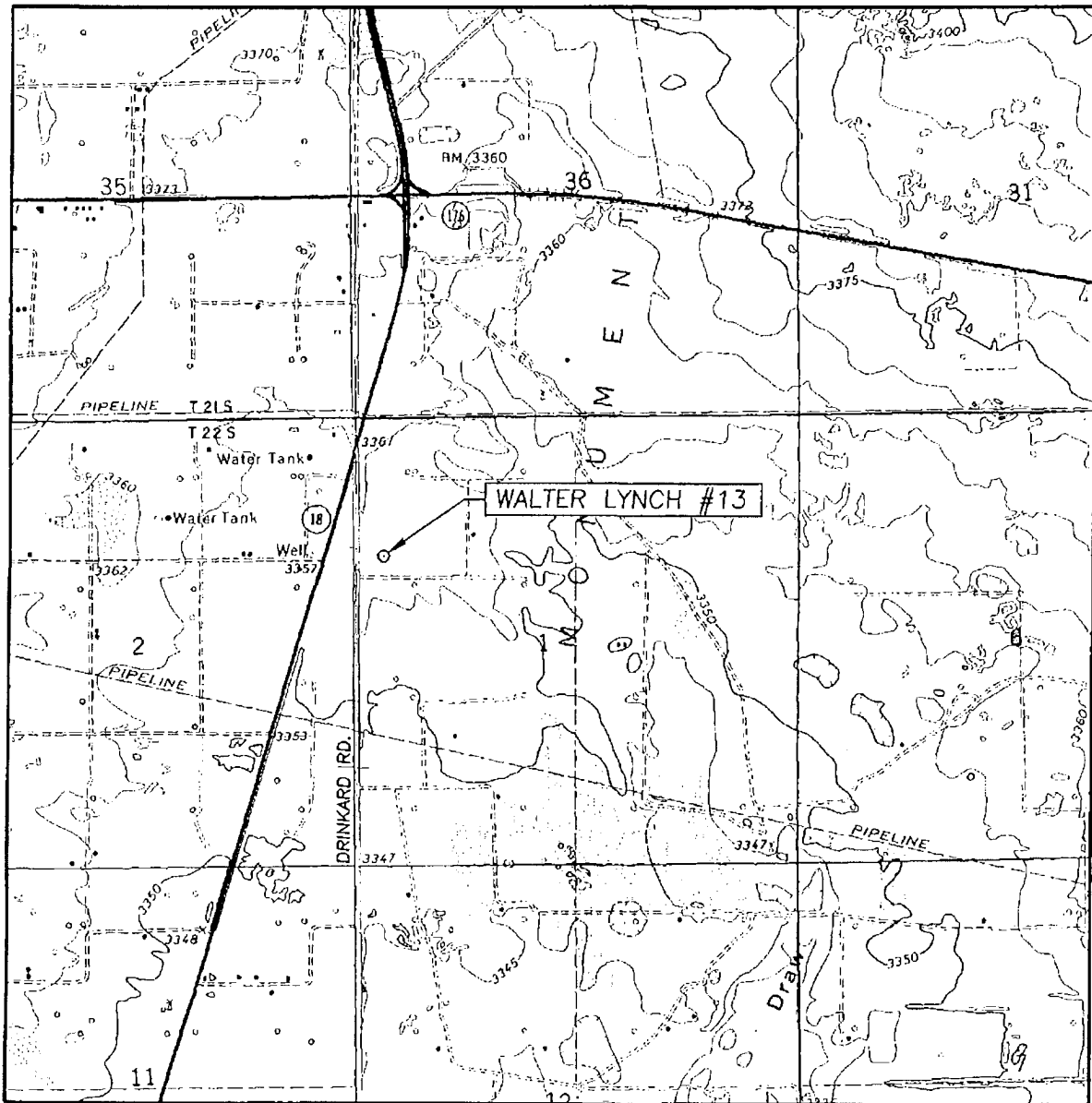
OPERATOR APACHE CORPORATION

LEASE WALTER LYNCH



PROVIDING SURVEYING SERVICES  
SINCE 1946  
**JOHN WEST SURVEYING COMPANY**  
412 N. DAL PASO  
HOBBS, N.M. 88240  
(575) 393-3117

# LOCATION VERIFICATION MAP



SCALE: 1" = 2000'

CONTOUR INTERVAL:  
EUNICE, N.M. - 10'  
EUNICE NE, N.M. - 5'

SEC. 1 TWP. 22-S RGE. 37-E

SURVEY N.M.P.M.

COUNTY LEA STATE NEW MEXICO

DESCRIPTION 1650' FNL & 330' FWL

ELEVATION 3357'

OPERATOR APACHE CORPORATION

LEASE WALTER LYNCH

U.S.G.S. TOPOGRAPHIC MAP

EUNICE NE, N.M.

