

RECEIVED

APR 06 2011
HOBSOCD

RECEIVED

APR 06 2011

HOBSOCD

Form C-102

Revised July 16, 2010
Submit to Appropriate
District Office

DISTRICT I
1625 N. FRENCH DR., HOBSBS, NM 88240
DISTRICT II
1301 W. GRAND AVENUE, ARTESIA, NM 88210
DISTRICT III
1000 RIO BRAZOS RD., AZTEC, NM 87410
DISTRICT IV
11885 S. ST. FRANCIS DR., SANTA FE, NM 87505

State of New Mexico
Energy, Minerals & Natural Resources Department
OIL CONSERVATION DIVISION
1220 South St. Francis Dr.
Santa Fe, New Mexico 87505

AMENDED REPORT

WELL LOCATION AND ACREAGE DEDICATION PLAT

API Number 30-025-40107	Pool Code 51687	Pool Name RED TANK; BONE SPRING, EAST
Property Code 38575	Property Name MERCHANT LIVESTOCK 22 33 19 STATE COM	Well Number 1H
OGRID No. 147179	Operator Name CHESAPEAKE OPERATING, INC.	Elevation 3704'

Surface Location

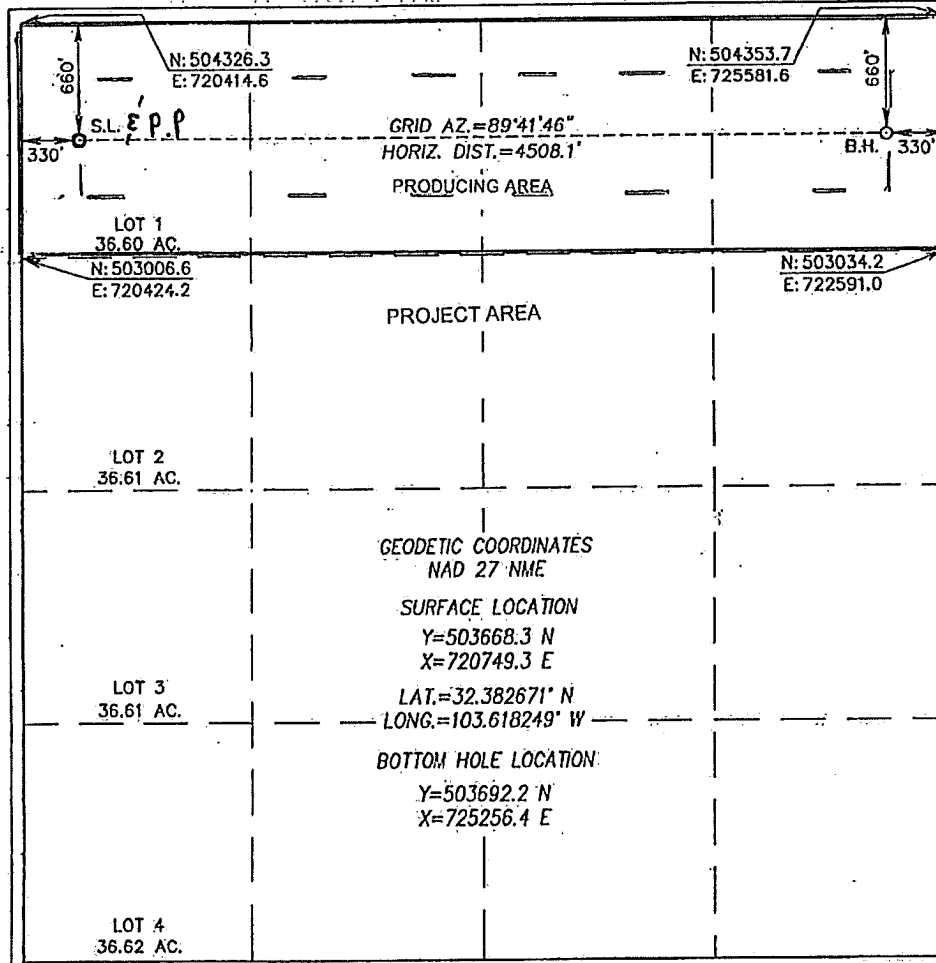
UL or lot No.	Section	Township	Range	Lot Idn	Feet from the	North/South line	Feet from the	East/West line	County
D	19	22-S	33-E		660	NORTH	330	WEST	LEA

Bottom Hole Location If Different From Surface

UL or lot No.	Section	Township	Range	Lot Idn	Feet from the	North/South line	Feet from the	East/West line	County
1	19	22-S	33-E		660	NORTH	330	EAST	LEA

Dedicated Acres 160	Joint or Infill	Consolidation Code	Order No.
------------------------	-----------------	--------------------	-----------

NO ALLOWABLE WILL BE ASSIGNED TO THIS COMPLETION UNTIL ALL INTERESTS HAVE BEEN CONSOLIDATED OR A NON-STANDARD UNIT HAS BEEN APPROVED BY THE DIVISION



OPERATOR CERTIFICATION

I hereby certify that the information herein is true and complete to the best of my knowledge and belief, and that this organization either owns a working interest or unleased mineral interest in the land including the proposed bottom hole location or has a right to drill this well at this location pursuant to a contract with an owner of such mineral or working interest, or to a voluntary pooling agreement or a compulsory pooling order heretofore entered by the division.

Bryan Arrant 04/04/2011
Signature Date
BRYAN ARRANT

Printed Name
BRYAN.ARRANT@CHK.COM
E-mail Address

SURVEYOR CERTIFICATION

I hereby certify that the well location shown on this plat was plotted from field notes of actual surveys made by me or under my supervision, and that the same is true and correct to the best of my belief.

MARCH 31, 2011

Date of Survey
Signature Seal of Professional Surveyor:

NEW MEXICO
REG. SURVEYOR
3239
Garth B. Eldson 4/04/2011
Certificate Number: Garth B. Eldson 12641
Garth B. Eldson
Randal J. Eldson 3239

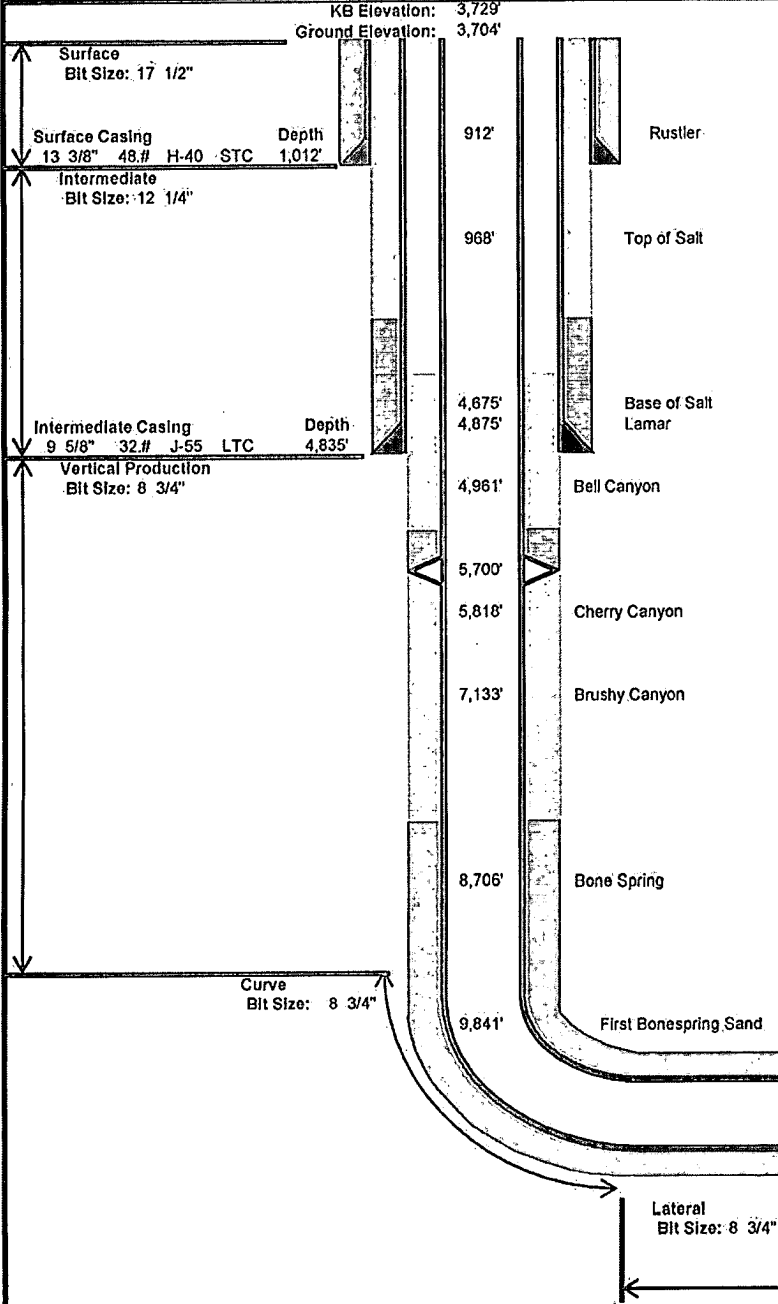
DSS JWSC W.O.: 11.11.0680



Drilling Engineer: Chris Gray
 Superintendent: Cecil Luttrill
 Geologist: Mark Oekerman

Well Name: MERCHANT LIVESTOCK 22 33 19 STATE COM 1H
 County, State: Eddy County, NM
 Surface Location: 660' FNL 330' FWL, Section 19, Township 22S, Range 33E
 BH Location: 660' FNL 330' FEL, Section 19, Township 22S, Range 33E
 SHL Latitude: 32.382653 SHL North: 503668
 SHL Longitude: -103.618322 SHL East: 720749
 BHL Latitude: 32.382619 BHL North: 503692
 BHL Longitude: -103.603691 BHL East: 725256
 Coordinates: NAD 83 Coordinates: NMSPCE

Drilling Rig: Latshaw 6
 Dir. Drilling: Phoenix
 Drilling Mud: Alliance
 Cement: Halliburton
 Wellhead: Sunbelt
 Property Number: 637536
 AFE Number: 156283



Wellhead Equipment	
Casing Head	13-3/8" x 13-5/8" 5K SOW
Casing Spool	13-5/8" 5K x 11" 5K
Tubing Spool	11" 5K x 7-1/16" 10K
Required BOP Stack	
13-5/8" 5K- Double, Annular, Rot Head w/Orbit Valve	

Mud					
Depth	Type	Weight	F. Vis	FL	
0' - 1,012'	Spud Mud	8.4-8.7	32-34	NC-NC	
1,012' - 4,835'	Brine	9.8-10.1	28-29	NC-NC	
4,835' - 10,374'	FW/Cut Brine	8.4-8.6	28-29	NC-NC	
10,374' - 11,125'	FW/Cut Brine	8.4-9	28-29	NC-NC	
11,125' - 15,154'	FW/Cut Brine	8.4-9	28-32	NC-NC	

Cement								
Slurry	Top	Btm	Wt	Yld	%Exc	Bbl	Sx	
Surface	Lead	0'	1,012'	13.5	1.73	150	320	1039
Intermediate	Lead	0'	2,660'	12.0	1.8	150	298	929
	Tail	2,660'	4,835'	14.2	1.37	150	309	1266
Production	1st Stage Lead	5,700'	7,000'	12.0	1.83	75	118	362
	1st Stage Tail	7,000'	15,154'	13.2	1.74	75	644	2078
	2nd Stage Lead	4,335'	5,450'	12.0	1.8	200	99	308
	2nd Stage Tail	5,450'	5,700'	14.8	1.33	200	34	142

Directional Plan						
Target Line:	10,852' TVD at 0°VS w/0.1 deg updip					
Target Window:	10' above and 10' below					
	MD	INC	AZM	TVD	VS	DLS
KOP	10,374'	0.00	0.00	10,374'	0'	0.00
EOB	11,125'	90.10	89.70	10,851'	479'	12.00
TD	15,154'	90.10	89.70	10,844'	4,507'	0.00
Hardlines:	Lateral- 330' from all lease lines. Vertical- Actual Lease Lines					
Notes:	Please note SHL and BHL distance from lease lines					

	Type	Logs	Interval	Timing	Vendor
LOGS	Mudlog	Mudlogging	Int Shoe to TD	After set Int Casing	Suttles
	OH	GR/Ind/Neutron/Density/Laterlog/Dipo	Pilot to Int Casing	After Pilot TD	Pending
	OH	Dual Induction log	7800' to Int Casing	After Pilot TD	Pending
	OH	60 Sidewall Cores	Pilot	After Pilot TD	Pending
SERVICES	LWD	Gamma/MWD	Curve and Lateral	While Drilling	Phoenix

RECEIVED

APR 06 2011

HOBBSOCD

30-025-40107

RECEIVED

APR 06 2011

HOBBSOCD

Permian District

NM - Lea - Bonespring

MERCHANT LIVESTOCK 22 33 19 STATE COM 1H

Plan: Plan 1

Standard Planning Report

06 April, 2011

RECEIVED

APR 06 2011

HOBSOCD

Chesapeake Operating
Planning Report

Database:	Drilling Database	Local Co-ordinate Reference:	Site Merchant Livestock 19 State Com 1H
Company:	Permian District	TVD Reference:	Rig @ 3726.0usft
Project:	NM - Lea - Bonespring	MD Reference:	Rig @ 3726.0usft
Site:	Merchant Livestock 19 State Com 1H	North Reference:	Grid
Well:	Merchant Livestock 19 State Com 1H	Survey Calculation Method:	Minimum Curvature
Wellbore:	Merchant Livestock 19 State Com 1H		
Design:	Plan 1		

Project	NM - Lea - Bonespring		
Map System:	US State Plane 1983	System Datum:	Mean Sea Level
Geo Datum:	North American Datum 1983		
Map Zone:	New Mexico Eastern Zone		

Site	Merchant Livestock 19 State Com 1H					
Site Position:	From:	Map	Northing:	503,668.30 ft	Latitude:	32° 22' 59.91835363 N
			Eastng:	720,749.30 ft	Longitude:	103° 45' 7.70880076 W
Position Uncertainty:	0.0 usft	Slot Radius:	13.200 in	Grid Convergence:	0.31 °	

Well	Merchant Livestock 19 State Com 1H					
Well Position	+N/-S	0.0 usft	Northing:	503,668.30 ft	Latitude:	32° 22' 59.91835363 N
	+E/-W	0.0 usft	Eastng:	720,749.30 ft	Longitude:	103° 45' 7.70880076 W
Position Uncertainty	0.0 usft	Wellhead Elevation:	3,704.0 usft	Ground Level:	3,704.0 usft	

Wellbore	Merchant Livestock 19 State Com 1H				
Magnetics	Model Name	Sample Date	Declination (°)	Dip Angle (°)	Field Strength (nT)
	IGRF200510	3/14/2011	7.70	60.33	48,751

Design	Plan 1			
Audit Notes:				
Version:	Phase:	PROTOTYPE	Tie On Depth:	0.0
Vertical Section:	Depth From (TVD) (usft)	+N/-S (usft)	+E/-W (usft)	Direction (°)
	3,726.0	0.0	0.0	89.70

Plan Sections										
Measured Depth (usft)	Inclination (°)	Azimuth (°)	Vertical Depth (usft)	+N/-S (usft)	+E/-W (usft)	Dogleg Rate (°/100usft)	Build Rate (°/100usft)	Turn Rate (°/100usft)	TFO (°)	Target:
0.0	0.00	0.00	0.0	0.0	0.0	0.00	0.00	0.00	0.00	

RECEIVED

Chesapeake Operating
Planning Report

APR 06 2011
HOBBSOCD

Database:	Drilling Database	Local Co-ordinate Reference:	Site Merchant Livestock 19 State Com 1H
Company:	Permian District	TVD Reference:	Rig @ 3726.0usft
Project:	NM - Lea - Bonespring	MD Reference:	Rig @ 3726.0usft
Site:	Merchant Livestock 19 State Com 1H	North Reference:	Grid
Well:	Merchant Livestock 19 State Com 1H	Survey Calculation Method:	Minimum Curvature
Wellbore:	Merchant Livestock 19 State Com 1H		
Design:	Plan 1		

Planned Survey										
Measured Depth (usft)	Inclination (°)	Azimuth (°)	Vertical Depth (usft)	+N/-S (usft)	+E/-W (usft)	Vertical Section (usft)	Dogleg Rate (%/100usft)	Build Rate (%/100usft)	Turn Rate (%/100usft)	
0.0	0.00	0.00	0.0	0.0	0.0	0.0	0.00	0.00	0.00	0.00
100.0	0.00	0.00	100.0	0.0	0.0	0.0	0.00	0.00	0.00	0.00
200.0	0.00	0.00	200.0	0.0	0.0	0.0	0.00	0.00	0.00	0.00
300.0	0.00	0.00	300.0	0.0	0.0	0.0	0.00	0.00	0.00	0.00
400.0	0.00	0.00	400.0	0.0	0.0	0.0	0.00	0.00	0.00	0.00
500.0	0.00	0.00	500.0	0.0	0.0	0.0	0.00	0.00	0.00	0.00
600.0	0.00	0.00	600.0	0.0	0.0	0.0	0.00	0.00	0.00	0.00
700.0	0.00	0.00	700.0	0.0	0.0	0.0	0.00	0.00	0.00	0.00
800.0	0.00	0.00	800.0	0.0	0.0	0.0	0.00	0.00	0.00	0.00
900.0	0.00	0.00	900.0	0.0	0.0	0.0	0.00	0.00	0.00	0.00
1,000.0	0.00	0.00	1,000.0	0.0	0.0	0.0	0.00	0.00	0.00	0.00
1,100.0	0.00	0.00	1,100.0	0.0	0.0	0.0	0.00	0.00	0.00	0.00
1,200.0	0.00	0.00	1,200.0	0.0	0.0	0.0	0.00	0.00	0.00	0.00
1,300.0	0.00	0.00	1,300.0	0.0	0.0	0.0	0.00	0.00	0.00	0.00
1,400.0	0.00	0.00	1,400.0	0.0	0.0	0.0	0.00	0.00	0.00	0.00
1,500.0	0.00	0.00	1,500.0	0.0	0.0	0.0	0.00	0.00	0.00	0.00
1,600.0	0.00	0.00	1,600.0	0.0	0.0	0.0	0.00	0.00	0.00	0.00
1,700.0	0.00	0.00	1,700.0	0.0	0.0	0.0	0.00	0.00	0.00	0.00
1,800.0	0.00	0.00	1,800.0	0.0	0.0	0.0	0.00	0.00	0.00	0.00
1,900.0	0.00	0.00	1,900.0	0.0	0.0	0.0	0.00	0.00	0.00	0.00
2,000.0	0.00	0.00	2,000.0	0.0	0.0	0.0	0.00	0.00	0.00	0.00
2,100.0	0.00	0.00	2,100.0	0.0	0.0	0.0	0.00	0.00	0.00	0.00
2,200.0	0.00	0.00	2,200.0	0.0	0.0	0.0	0.00	0.00	0.00	0.00
2,300.0	0.00	0.00	2,300.0	0.0	0.0	0.0	0.00	0.00	0.00	0.00
2,400.0	0.00	0.00	2,400.0	0.0	0.0	0.0	0.00	0.00	0.00	0.00
2,500.0	0.00	0.00	2,500.0	0.0	0.0	0.0	0.00	0.00	0.00	0.00
2,600.0	0.00	0.00	2,600.0	0.0	0.0	0.0	0.00	0.00	0.00	0.00
2,700.0	0.00	0.00	2,700.0	0.0	0.0	0.0	0.00	0.00	0.00	0.00
2,800.0	0.00	0.00	2,800.0	0.0	0.0	0.0	0.00	0.00	0.00	0.00
2,900.0	0.00	0.00	2,900.0	0.0	0.0	0.0	0.00	0.00	0.00	0.00
3,000.0	0.00	0.00	3,000.0	0.0	0.0	0.0	0.00	0.00	0.00	0.00
3,100.0	0.00	0.00	3,100.0	0.0	0.0	0.0	0.00	0.00	0.00	0.00
3,200.0	0.00	0.00	3,200.0	0.0	0.0	0.0	0.00	0.00	0.00	0.00
3,300.0	0.00	0.00	3,300.0	0.0	0.0	0.0	0.00	0.00	0.00	0.00
3,400.0	0.00	0.00	3,400.0	0.0	0.0	0.0	0.00	0.00	0.00	0.00
3,500.0	0.00	0.00	3,500.0	0.0	0.0	0.0	0.00	0.00	0.00	0.00
3,600.0	0.00	0.00	3,600.0	0.0	0.0	0.0	0.00	0.00	0.00	0.00
3,700.0	0.00	0.00	3,700.0	0.0	0.0	0.0	0.00	0.00	0.00	0.00
3,800.0	0.00	0.00	3,800.0	0.0	0.0	0.0	0.00	0.00	0.00	0.00
3,900.0	0.00	0.00	3,900.0	0.0	0.0	0.0	0.00	0.00	0.00	0.00
4,000.0	0.00	0.00	4,000.0	0.0	0.0	0.0	0.00	0.00	0.00	0.00
4,100.0	0.00	0.00	4,100.0	0.0	0.0	0.0	0.00	0.00	0.00	0.00
4,200.0	0.00	0.00	4,200.0	0.0	0.0	0.0	0.00	0.00	0.00	0.00
4,300.0	0.00	0.00	4,300.0	0.0	0.0	0.0	0.00	0.00	0.00	0.00
4,400.0	0.00	0.00	4,400.0	0.0	0.0	0.0	0.00	0.00	0.00	0.00
4,500.0	0.00	0.00	4,500.0	0.0	0.0	0.0	0.00	0.00	0.00	0.00
4,600.0	0.00	0.00	4,600.0	0.0	0.0	0.0	0.00	0.00	0.00	0.00
4,700.0	0.00	0.00	4,700.0	0.0	0.0	0.0	0.00	0.00	0.00	0.00
4,800.0	0.00	0.00	4,800.0	0.0	0.0	0.0	0.00	0.00	0.00	0.00
4,900.0	0.00	0.00	4,900.0	0.0	0.0	0.0	0.00	0.00	0.00	0.00
5,000.0	0.00	0.00	5,000.0	0.0	0.0	0.0	0.00	0.00	0.00	0.00
5,100.0	0.00	0.00	5,100.0	0.0	0.0	0.0	0.00	0.00	0.00	0.00
5,200.0	0.00	0.00	5,200.0	0.0	0.0	0.0	0.00	0.00	0.00	0.00
5,300.0	0.00	0.00	5,300.0	0.0	0.0	0.0	0.00	0.00	0.00	0.00

RECEIVED

APR 06 2011

HOBSOCD

Chesapeake Operating
Planning Report

Database:	Drilling Database	Local Co-ordinate Reference:	Site Merchant Livestock 19 State Com 1H
Company:	Permian District	TVD Reference:	Rig @ 3726.0usft
Project:	NM - Lea - Bonespring	MD Reference:	Rig @ 3726.0usft
Site:	Merchant Livestock 19 State Com 1H	North Reference:	Grid
Well:	Merchant Livestock 19 State Com 1H	Survey Calculation Method:	Minimum Curvature
Wellbore:	Merchant Livestock 19 State Com 1H		
Design:	Plan 1		

Planned Survey										
Measured Depth (usft)	Inclination (°)	Azimuth (°)	Vertical Depth (usft)	+N/-S (usft)	+E/-W (usft)	Vertical Section (usft)	Dogleg Rate (%/100usft)	Build Rate (%/100usft)	Turn Rate (%/100usft)	
5,400.0	0.00	0.00	5,400.0	0.0	0.0	0.0	0.00	0.00	0.00	0.00
5,500.0	0.00	0.00	5,500.0	0.0	0.0	0.0	0.00	0.00	0.00	0.00
5,600.0	0.00	0.00	5,600.0	0.0	0.0	0.0	0.00	0.00	0.00	0.00
5,700.0	0.00	0.00	5,700.0	0.0	0.0	0.0	0.00	0.00	0.00	0.00
5,800.0	0.00	0.00	5,800.0	0.0	0.0	0.0	0.00	0.00	0.00	0.00
5,900.0	0.00	0.00	5,900.0	0.0	0.0	0.0	0.00	0.00	0.00	0.00
6,000.0	0.00	0.00	6,000.0	0.0	0.0	0.0	0.00	0.00	0.00	0.00
6,100.0	0.00	0.00	6,100.0	0.0	0.0	0.0	0.00	0.00	0.00	0.00
6,200.0	0.00	0.00	6,200.0	0.0	0.0	0.0	0.00	0.00	0.00	0.00
6,300.0	0.00	0.00	6,300.0	0.0	0.0	0.0	0.00	0.00	0.00	0.00
6,400.0	0.00	0.00	6,400.0	0.0	0.0	0.0	0.00	0.00	0.00	0.00
6,500.0	0.00	0.00	6,500.0	0.0	0.0	0.0	0.00	0.00	0.00	0.00
6,600.0	0.00	0.00	6,600.0	0.0	0.0	0.0	0.00	0.00	0.00	0.00
6,700.0	0.00	0.00	6,700.0	0.0	0.0	0.0	0.00	0.00	0.00	0.00
6,800.0	0.00	0.00	6,800.0	0.0	0.0	0.0	0.00	0.00	0.00	0.00
6,900.0	0.00	0.00	6,900.0	0.0	0.0	0.0	0.00	0.00	0.00	0.00
7,000.0	0.00	0.00	7,000.0	0.0	0.0	0.0	0.00	0.00	0.00	0.00
7,100.0	0.00	0.00	7,100.0	0.0	0.0	0.0	0.00	0.00	0.00	0.00
7,200.0	0.00	0.00	7,200.0	0.0	0.0	0.0	0.00	0.00	0.00	0.00
7,300.0	0.00	0.00	7,300.0	0.0	0.0	0.0	0.00	0.00	0.00	0.00
7,400.0	0.00	0.00	7,400.0	0.0	0.0	0.0	0.00	0.00	0.00	0.00
7,500.0	0.00	0.00	7,500.0	0.0	0.0	0.0	0.00	0.00	0.00	0.00
7,600.0	0.00	0.00	7,600.0	0.0	0.0	0.0	0.00	0.00	0.00	0.00
7,700.0	0.00	0.00	7,700.0	0.0	0.0	0.0	0.00	0.00	0.00	0.00
7,800.0	0.00	0.00	7,800.0	0.0	0.0	0.0	0.00	0.00	0.00	0.00
7,900.0	0.00	0.00	7,900.0	0.0	0.0	0.0	0.00	0.00	0.00	0.00
8,000.0	0.00	0.00	8,000.0	0.0	0.0	0.0	0.00	0.00	0.00	0.00
8,100.0	0.00	0.00	8,100.0	0.0	0.0	0.0	0.00	0.00	0.00	0.00
8,200.0	0.00	0.00	8,200.0	0.0	0.0	0.0	0.00	0.00	0.00	0.00
8,300.0	0.00	0.00	8,300.0	0.0	0.0	0.0	0.00	0.00	0.00	0.00
8,400.0	0.00	0.00	8,400.0	0.0	0.0	0.0	0.00	0.00	0.00	0.00
8,500.0	0.00	0.00	8,500.0	0.0	0.0	0.0	0.00	0.00	0.00	0.00
8,600.0	0.00	0.00	8,600.0	0.0	0.0	0.0	0.00	0.00	0.00	0.00
8,700.0	0.00	0.00	8,700.0	0.0	0.0	0.0	0.00	0.00	0.00	0.00
8,800.0	0.00	0.00	8,800.0	0.0	0.0	0.0	0.00	0.00	0.00	0.00
8,900.0	0.00	0.00	8,900.0	0.0	0.0	0.0	0.00	0.00	0.00	0.00
9,000.0	0.00	0.00	9,000.0	0.0	0.0	0.0	0.00	0.00	0.00	0.00
9,100.0	0.00	0.00	9,100.0	0.0	0.0	0.0	0.00	0.00	0.00	0.00
9,200.0	0.00	0.00	9,200.0	0.0	0.0	0.0	0.00	0.00	0.00	0.00
9,300.0	0.00	0.00	9,300.0	0.0	0.0	0.0	0.00	0.00	0.00	0.00
9,400.0	0.00	0.00	9,400.0	0.0	0.0	0.0	0.00	0.00	0.00	0.00
9,500.0	0.00	0.00	9,500.0	0.0	0.0	0.0	0.00	0.00	0.00	0.00
9,600.0	0.00	0.00	9,600.0	0.0	0.0	0.0	0.00	0.00	0.00	0.00
9,700.0	0.00	0.00	9,700.0	0.0	0.0	0.0	0.00	0.00	0.00	0.00
9,800.0	0.00	0.00	9,800.0	0.0	0.0	0.0	0.00	0.00	0.00	0.00
9,900.0	0.00	0.00	9,900.0	0.0	0.0	0.0	0.00	0.00	0.00	0.00
10,000.0	0.00	0.00	10,000.0	0.0	0.0	0.0	0.00	0.00	0.00	0.00
10,100.0	0.00	0.00	10,100.0	0.0	0.0	0.0	0.00	0.00	0.00	0.00
10,200.0	0.00	0.00	10,200.0	0.0	0.0	0.0	0.00	0.00	0.00	0.00
10,300.0	0.00	0.00	10,300.0	0.0	0.0	0.0	0.00	0.00	0.00	0.00
10,374.0	0.00	0.00	10,374.0	0.0	0.0	0.0	0.00	0.00	0.00	0.00
10,400.0	3.12	89.70	10,400.0	0.0	0.7	0.7	12.01	12.01	0.00	0.00
10,500.0	15.13	89.70	10,498.5	0.1	16.5	16.5	12.01	12.01	0.00	0.00
10,600.0	27.14	89.70	10,591.6	0.3	52.5	52.5	12.01	12.01	0.00	0.00

Chesapeake Operating Planning Report

Database:	Drilling Database	Local Co-ordinate Reference:	Site Merchant Livestock 19 State Com 1H
Company:	Permian District	TVD Reference:	Rig @ 3726.0usft
Project:	NM - Lea - Bonespring	MD Reference:	Rig @ 3726.0usft
Site:	Merchant Livestock 19 State Com 1H	North Reference:	Grid
Well:	Merchant Livestock 19 State Com.1H	Survey Calculation Method:	Minimum Curvature
Wellbore:	Merchant Livestock 19 State Com 1H		
Design:	Plan 1		

Planned Survey										
Measured Depth (usft)	Inclination (°)	Azimuth (°)	Vertical Depth (usft)	+N/-S (usft)	+E/-W (usft)	Vertical Section (usft)	Dogleg Rate (%/100usft)	Build Rate (%/100usft)	Turn Rate (%/100usft)	
10,700.0	39.14	89.70	10,675.2	0.6	107.1	107.1	12.01	12.01	0.00	
10,800.0	51.15	89.70	10,745.6	0.9	177.8	177.9	12.01	12.01	0.00	
10,900.0	63.16	89.70	10,799.8	1.4	261.7	261.7	12.01	12.01	0.00	
10,957.0	70.00	89.70	10,822.4	1.6	314.0	314.0	12.01	12.01	0.00	
11,000.0	75.14	89.70	10,835.3	1.9	355.0	355.0	11.98	11.98	0.00	
11,100.0	87.11	89.70	10,850.7	2.4	453.6	453.6	11.96	11.96	0.00	
11,125.0	90.10	89.70	10,851.3	2.5	478.6	478.6	11.96	11.96	0.00	
11,200.0	90.10	89.70	10,851.2	2.9	553.6	553.6	0.00	0.00	0.00	
11,300.0	90.10	89.70	10,851.0	3.4	653.6	653.6	0.00	0.00	0.00	
11,400.0	90.10	89.70	10,850.8	3.9	753.6	753.6	0.00	0.00	0.00	
11,500.0	90.10	89.70	10,850.6	4.5	853.6	853.6	0.00	0.00	0.00	
11,600.0	90.10	89.70	10,850.5	5.0	953.6	953.6	0.00	0.00	0.00	
11,700.0	90.10	89.70	10,850.3	5.5	1,053.6	1,053.6	0.00	0.00	0.00	
11,800.0	90.10	89.70	10,850.1	6.0	1,153.6	1,153.6	0.00	0.00	0.00	
11,900.0	90.10	89.70	10,849.9	6.6	1,253.6	1,253.6	0.00	0.00	0.00	
12,000.0	90.10	89.70	10,849.8	7.1	1,353.6	1,353.6	0.00	0.00	0.00	
12,100.0	90.10	89.70	10,849.6	7.6	1,453.6	1,453.6	0.00	0.00	0.00	
12,200.0	90.10	89.70	10,849.4	8.1	1,553.6	1,553.6	0.00	0.00	0.00	
12,300.0	90.10	89.70	10,849.2	8.7	1,653.6	1,653.6	0.00	0.00	0.00	
12,400.0	90.10	89.70	10,849.1	9.2	1,753.6	1,753.6	0.00	0.00	0.00	
12,500.0	90.10	89.70	10,848.9	9.7	1,853.6	1,853.6	0.00	0.00	0.00	
12,600.0	90.10	89.70	10,848.7	10.2	1,953.6	1,953.6	0.00	0.00	0.00	
12,700.0	90.10	89.70	10,848.5	10.8	2,053.6	2,053.6	0.00	0.00	0.00	
12,800.0	90.10	89.70	10,848.4	11.3	2,153.6	2,153.6	0.00	0.00	0.00	
12,900.0	90.10	89.70	10,848.2	11.8	2,253.6	2,253.6	0.00	0.00	0.00	
13,000.0	90.10	89.70	10,848.0	12.3	2,353.6	2,353.6	0.00	0.00	0.00	
13,100.0	90.10	89.70	10,847.8	12.8	2,453.6	2,453.6	0.00	0.00	0.00	
13,200.0	90.10	89.70	10,847.7	13.4	2,553.6	2,553.6	0.00	0.00	0.00	
13,300.0	90.10	89.70	10,847.5	13.9	2,653.6	2,653.6	0.00	0.00	0.00	
13,400.0	90.10	89.70	10,847.3	14.4	2,753.6	2,753.6	0.00	0.00	0.00	
13,500.0	90.10	89.70	10,847.1	14.9	2,853.6	2,853.6	0.00	0.00	0.00	
13,600.0	90.10	89.70	10,847.0	15.5	2,953.6	2,953.6	0.00	0.00	0.00	
13,700.0	90.10	89.70	10,846.8	16.0	3,053.6	3,053.6	0.00	0.00	0.00	
13,800.0	90.10	89.70	10,846.6	16.5	3,153.6	3,153.6	0.00	0.00	0.00	
13,900.0	90.10	89.70	10,846.5	17.0	3,253.6	3,253.6	0.00	0.00	0.00	
14,000.0	90.10	89.70	10,846.3	17.6	3,353.6	3,353.6	0.00	0.00	0.00	
14,100.0	90.10	89.70	10,846.1	18.1	3,453.6	3,453.6	0.00	0.00	0.00	
14,200.0	90.10	89.70	10,845.9	18.6	3,553.6	3,553.6	0.00	0.00	0.00	
14,300.0	90.10	89.70	10,845.8	19.1	3,653.6	3,653.6	0.00	0.00	0.00	
14,400.0	90.10	89.70	10,845.6	19.7	3,753.6	3,753.6	0.00	0.00	0.00	
14,500.0	90.10	89.70	10,845.4	20.2	3,853.6	3,853.6	0.00	0.00	0.00	
14,600.0	90.10	89.70	10,845.2	20.7	3,953.6	3,953.6	0.00	0.00	0.00	
14,700.0	90.10	89.70	10,845.1	21.2	4,053.5	4,053.6	0.00	0.00	0.00	
14,800.0	90.10	89.70	10,844.9	21.7	4,153.5	4,153.6	0.00	0.00	0.00	
14,900.0	90.10	89.70	10,844.7	22.3	4,253.5	4,253.6	0.00	0.00	0.00	
15,000.0	90.10	89.70	10,844.5	22.8	4,353.5	4,353.6	0.00	0.00	0.00	
15,100.0	90.10	89.70	10,844.4	23.3	4,453.5	4,453.6	0.00	0.00	0.00	
15,154.0	90.10	89.70	10,844.3	23.6	4,507.5	4,507.6	0.00	0.00	0.00	

Chesapeake Operating
Planning Report

Database:	Drilling Database	Local Co-ordinate Reference:	Site Merchant Livestock 19 State Com 1H
Company:	Permian District	TVD Reference:	Rig @ 3726.0usft
Project:	NM - Lea - Bonespring	MD Reference:	Rig @ 3726.0usft
Site:	Merchant Livestock 19 State Com 1H	North Reference:	Grid
Well:	Merchant Livestock 19 State Com 1H	Survey Calculation Method:	Minimum Curvature
Wellbore:	Merchant Livestock 19 State Com 1H		
Design:	Plan 1		

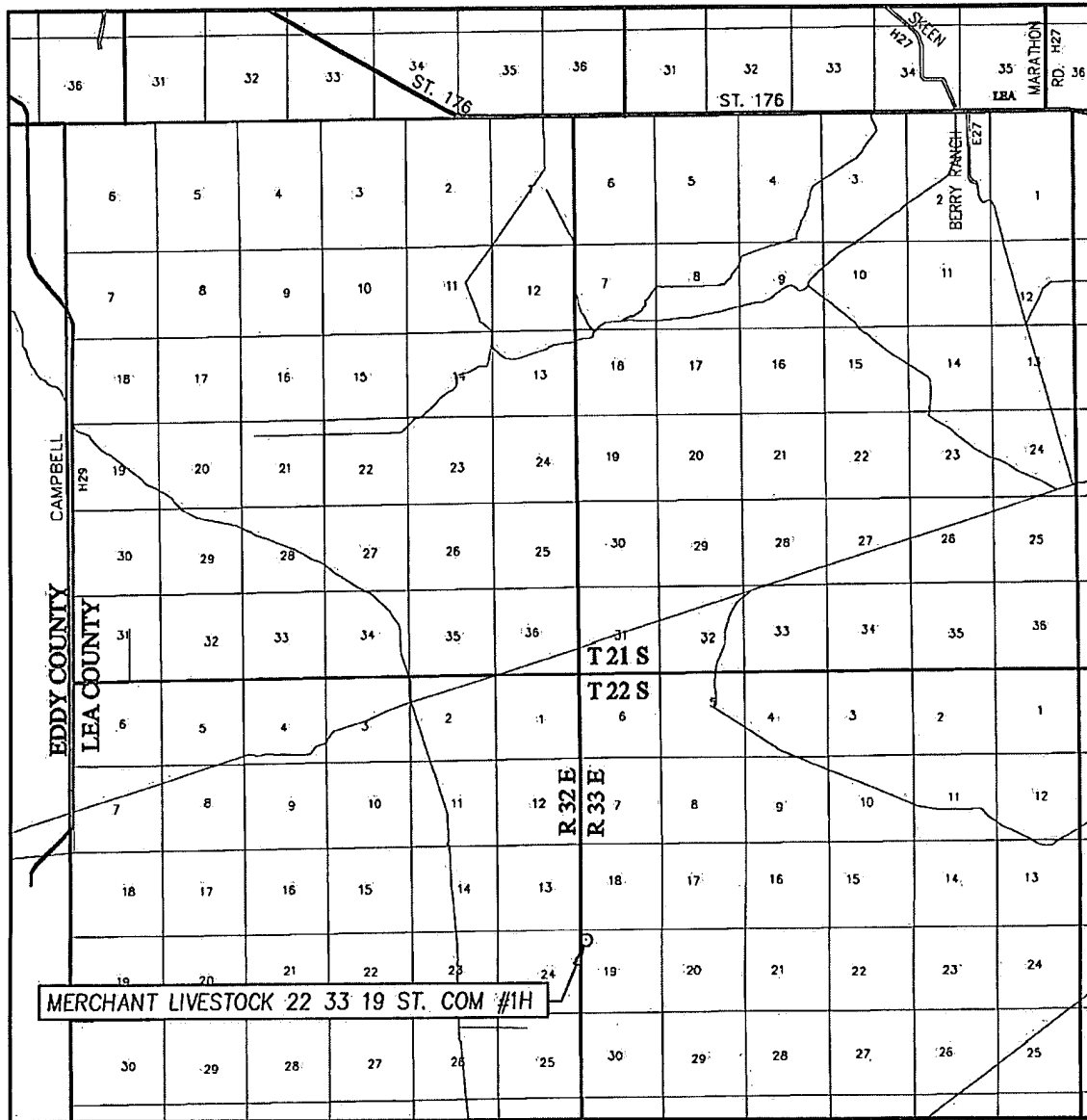
Design Targets									
Target Name	Dip Angle	Dip Dir.	TVD	+N/-S	+E/-W	Northing	Easting	Latitude	Longitude
- hit/miss target	(°)	(°)	(usft)	(usft)	(usft)	(ft)	(ft)		
BR 19 2 - BHL - Geoproj	0.00	0.00	14,570.0	-1,291.1	45,842.0	502,377.24	766,591.39	2° 22' 44.36400000 N	3° 36' 13.23360000 W
- plan misses target center by 41522.9usft at 15154.0usft MD (10844.3 TVD, 23.6 N, 4507.5 E)									
- Point									
BR 19 2 - SHL - Geoproj	0.00	0.00	14,578.0	-1,309.3	41,201.9	502,359.02	761,951.28	2° 22' 44.49360000 N	3° 37' 7.34160000 W
- plan misses target center by 36907.9usft at 15154.0usft MD (10844.3 TVD, 23.6 N, 4507.5 E)									
- Point									

RECEIVED

APR 06 2011

HOBBS, N.M.

VICINITY MAP



SCALE: 1" = 2 MILES

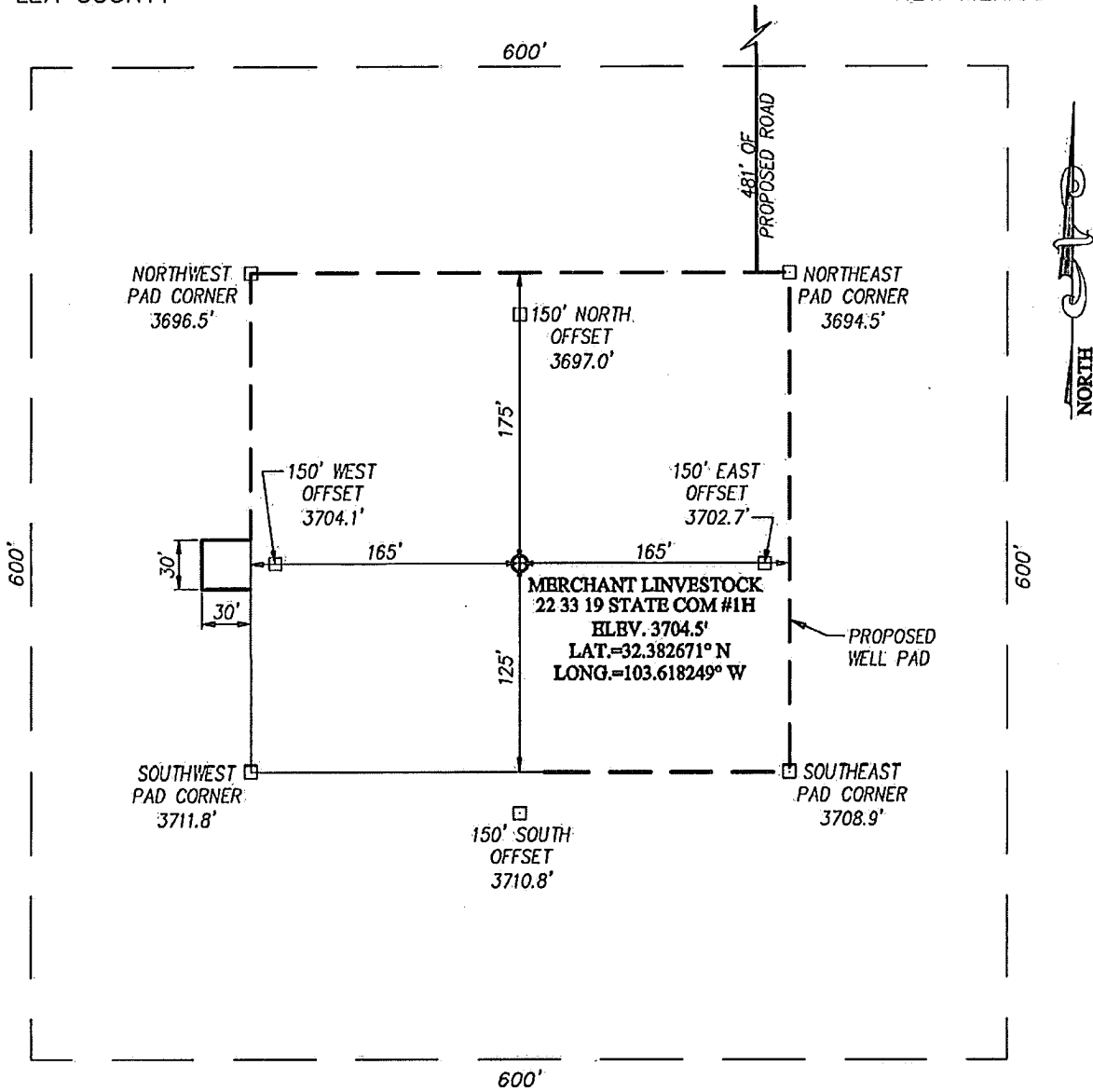
SEC. 19 TWP. 22-S RGE. 33-E
 SURVEY N.M.P.M.
 COUNTY LEA STATE NEW MEXICO
 DESCRIPTION 660' FNL & 330' FWL
 ELEVATION 3704'
 OPERATOR CHESAPEAKE OPERATING, INC.
 LEASE MERCHANT LIVESTOCK
22 33 19 STATE COM

PROVIDING SURVEYING SERVICES
 SINCE 1946
JOHN WEST SURVEYING COMPANY
 412 N. DAL PASO
 HOBBS, N.M. 88240
 (575) 393-3117

APR 06 2011

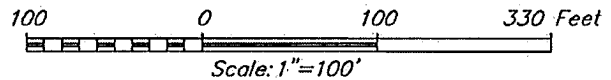
HOBBS

SECTION 19, TOWNSHIP 22 SOUTH, RANGE 33 EAST, N.M.P.M.
LEA COUNTY NEW MEXICO



DIRECTIONS TO LOCATION

FROM THE INTERSECTION OF U.S. HWY. #62-180 AND ST. HWY. #176, GO SOUTHEAST ON HWY. #176 APPROX. 6.5 MILES. TURN RIGHT AND GO SOUTH APPROX. 0.6 MILES. VEER RIGHT AND GO SOUTHWEST APPROX. 1.6 MILES. VEER LEFT AND GO SOUTHEAST APPROX. 1.0 MILE. VEER LEFT AND CONTINUE NORTHEAST APPROX. 0.6 MILES. TURN RIGHT AND GO SOUTHEAST APPROX. 0.4 MILES. VEER LEFT AND CONTINUE SOUTH APPROX. 6.5 MILES. TURN LEFT AND GO EAST APPROX. 500 FEET TO A PROPOSED ROAD SURVEY. FOLLOW ROAD SURVEY STAKES APPROX. 481 FEET TO THIS LOCATION.



PROVIDING SURVEYING SERVICES
SINCE 1946
JOHN WEST SURVEYING COMPANY
412 N. DAL PASO
HOBBS, N.M. 88240
(575) 393-3117

CHESAPEAKE OPERATING, INC.

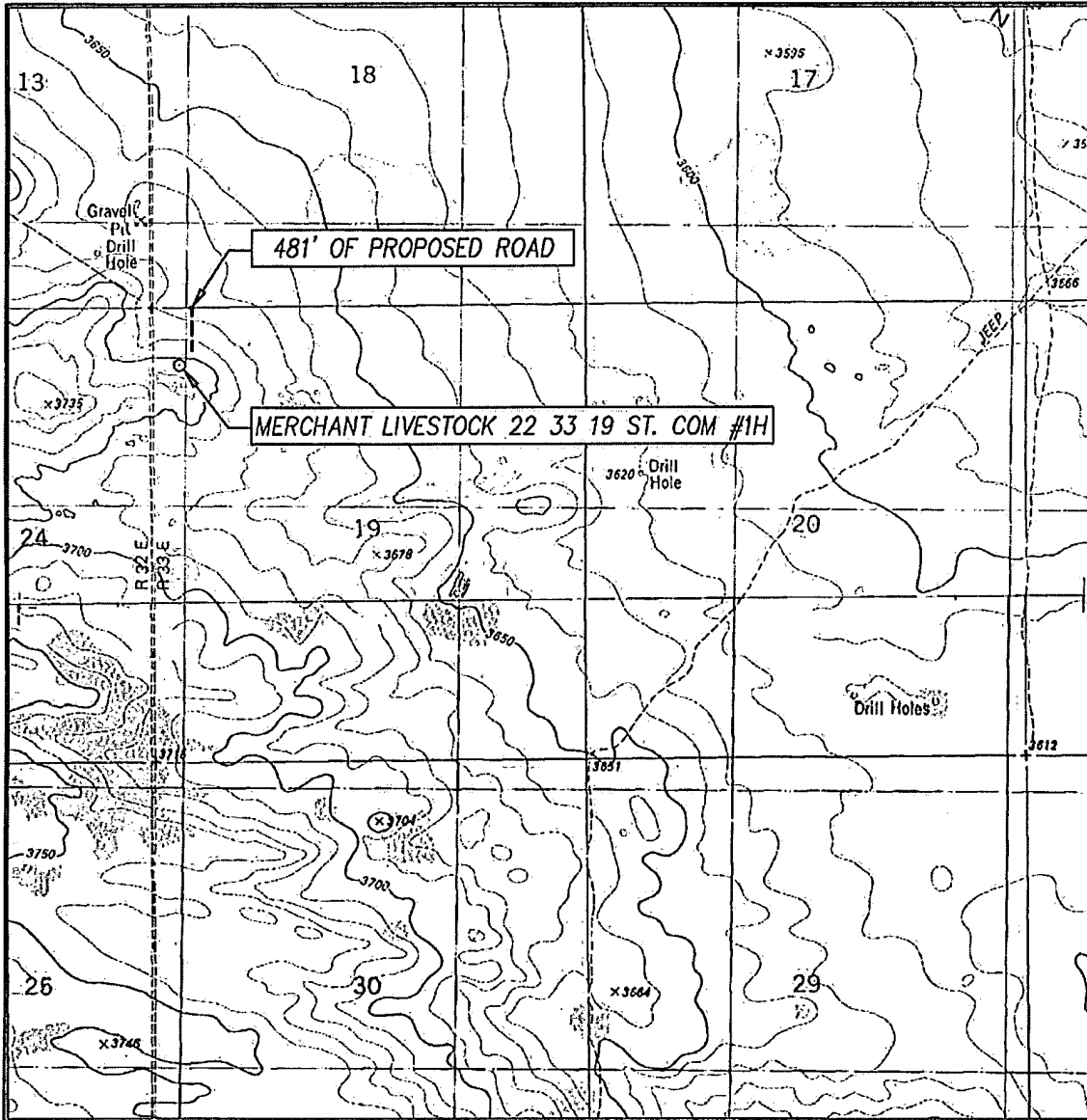
MERCHANT LIVESTOCK 22 33 19 STATE COM #1H WELL
LOCATED 660 FEET FROM THE NORTH LINE
AND 330 FEET FROM THE WEST LINE OF SECTION 19,
TOWNSHIP 22 SOUTH, RANGE 33 EAST, N.M.P.M.,
LEA COUNTY, NEW MEXICO

Survey Date: 3/22/11	Sheet 1 of 1 Sheets
W.O. Number: 11.11.0680	Dr. By: LA
Date: 3/29/11	Rel. W.O.: 11110680
	Scale: 1"=100'

RECEIVED

APR 06 2011
HOBBSOCD

LOCATION VERIFICATION MAP



SCALE: 1" = 2000'

CONTOUR INTERVAL:
GRAMA RIDGE, N.M. - 10'
TIPTOP WELLS, N.M. - 10'

SEC. 19 TWP. 22-S RGE. 33-E

SURVEY _____ N.M.P.M.

COUNTY LEA STATE NEW MEXICO

DESCRIPTION 660' FNL & 330' FWL

ELEVATION: 3704'

OPERATOR CHESAPEAKE OPERATING, INC.

LEASE MERCHANT LIVESTOCK
22 33 19 STATE COM

U.S.G.S. TOPOGRAPHIC MAP
GRAMA RIDGE, N.M.

PROVIDING SURVEYING SERVICES
SINCE 1946
JOHN WEST SURVEYING COMPANY
412 N. DAL PASO
HOBBS, N.M. 88240
(575) 393-3117