

Crossroads Penn Pool Magnolia Petroleum Company

PRODUCING DEPARTMENT

Location made Sept. 10 th, 19 52

Santa Fe "F" Well No. 1

Lea District

Lease HM-1222, acres 160, Sec. 20, T 9 S, R 36 E { District
Township

Lea County, New Mexico

Scale 1" = 500' N S E W

Devonian

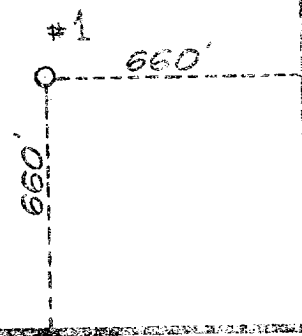
Mag.

Coline O. Co.

Magnolia Pet. Co.

Oil Development
Co. of Texas

Santa Fe "F"



Mag.

Mag.

Mag.

Reserve 200'

Special instructions Permit depth - 9700 ft.

Location changed on account of _____

Date work is commenced _____, 19 _____ Supt.

Location approved by _____ Plat made by K. C. Lawless

Magnolia Petroleum Company
PRODUCING DEPARTMENT

Location for Well No. _____

File No. _____